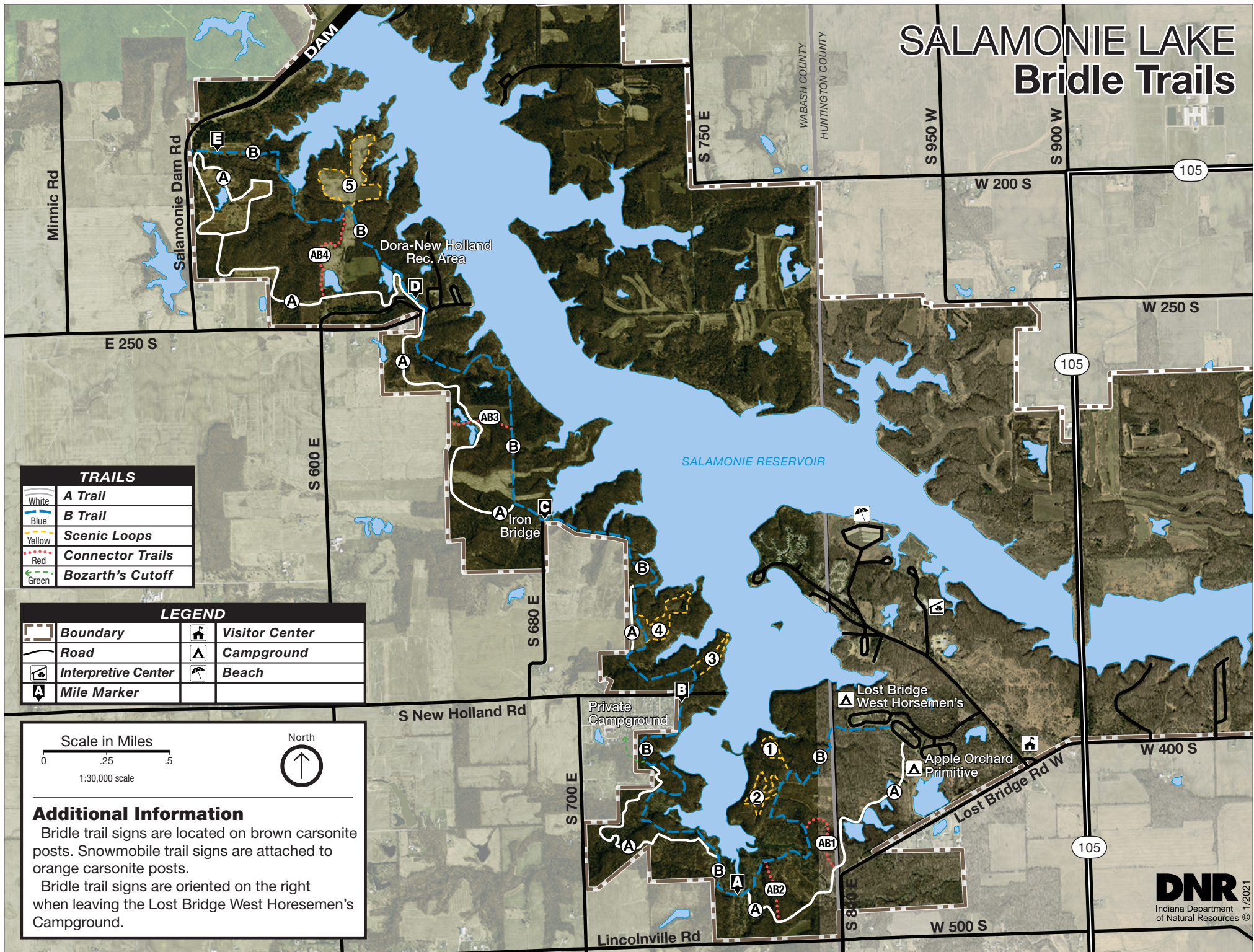


# SALAMONIE LAKE Bridle Trails





## RULES FOR HORSEBACK RIDERS

- Riders are required to stay on marked trails at all times. Trail markers are on the right side of the trail as a rider is traveling away from Lost Bridge West State Recreation Area (SRA) and will be on the left side as the rider is traveling toward Lost Bridge West SRA. Trail areas are monitored by Law Enforcement for compliance.
- All horseback riders riding at Salamonie Reservoir and the Salamonie River State Forest are required to have an annual or daily horse trail permit valid for the day they are riding. Horse trail permits can be purchased at the Salamonie Visitor Center, Interpretive Center, or Gatehouse.
- Day riders are permitted to park in the day-use parking lots (i.e. day-use areas) in the Salamonie River State Forest, Dora-New Holland SRA and at the Lost Bridge West SRA only. Overnight camping is not permitted in day-use areas. Day-use areas are only open between sunrise and sunset.
- There are no motorized vehicles allowed on the Bridle Trail except for snowmobiles during legal snowmobiling season.
- It is unlawful to tie horses to trees on DNR property.
- Owners of unruly animals causing disturbances may be asked to leave DNR property without a refund.
- It is unsafe to ride horses on property roads except at intersections with mapped trails.

## TRAIL AND PROPERTY USES

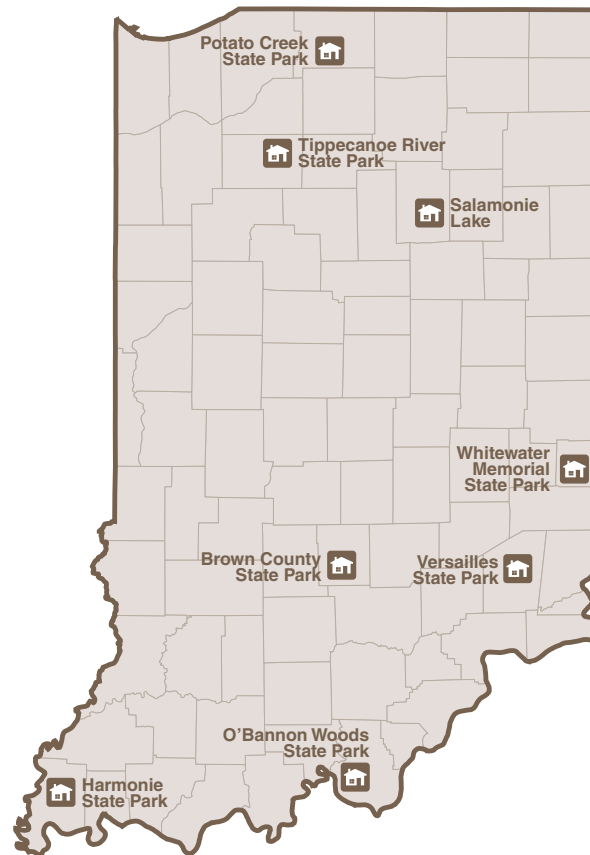
- Salamonie Reservoir is a multiple-use property managed by the DNR for a variety of public recreational opportunities. Expect to see other users such as hunters, fishermen, hikers, and snowmobilers using the Bridle Trail. The bridle trail is also signed for snowmobile use.
- Night riding and riding in wet weather is discouraged because of its hazardous nature.
- Riders are encouraged to wear hunter orange from November through January.
- No horse rentals are available on the property.

## CAMPING

Salamonie Reservoir offers a primitive (class C) horseman campground in the Lost Bridge West SRA. Hitch posts and manure bins are available at campsites. A shelter house is available. Lost Bridge West modern campground (class A) and Apple Orchard primitive family campground (class C) offer additional camping for campers without horses.

The Salamonie River State Forest has a primitive (class C) horseman campground and a primitive (class C) family campground. All campers must self-register upon arrival at the State Forest campgrounds. Horses are not allowed in family or modern campgrounds.

## DNR PROPERTIES WITH BRIDLE TRAILS



## FOR MORE INFORMATION



Write: Salamonie Lake  
9214 Lost Bridge West  
Andrews, IN 46702

Call: 260-468-2125

Online: [stateparks.IN.gov/2952.htm](http://stateparks.IN.gov/2952.htm)



Please carry out all trash you produce in order to keep your park clean and beautiful for others to enjoy!



@INDnrstateparks  
andreservoirs



@indianadnr



@INDNRstateparks

See everything Indiana State Parks has to offer at [stateparks.IN.gov](http://stateparks.IN.gov).

OUTDOOR  
INDIANA

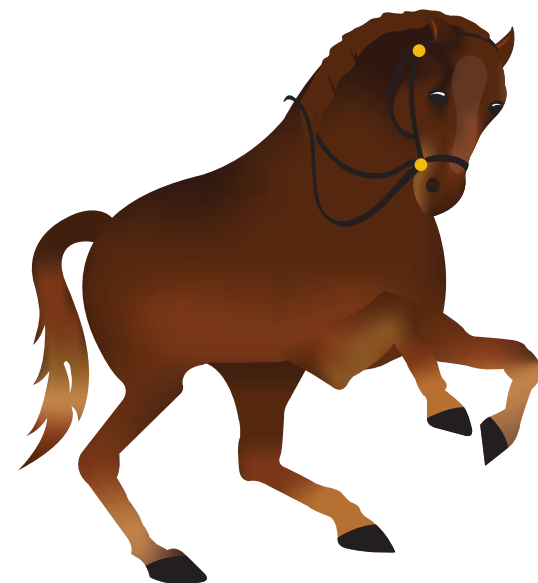
Subscribe to Outdoor Indiana magazine today,  
Visit [OutdoorIndiana.org](http://OutdoorIndiana.org) or call 317-233-3046.

The programs, services, facilities, and activities of the Indiana Department of Natural Resources are available to everyone. DNR prohibits discrimination on the basis of race, color, national origin, age, sex, or disability. If you believe that you have been discriminated against in any program, activity, or facility as described above, or if you desire further information please write to: Department of Natural Resources, Executive Office, 402 W. Washington Street, W256, Indianapolis, IN 46204, (317) 232-4020.

© 06/2024 Indiana Department of Natural Resources

DNR Indiana Department of Natural Resources

# SALAMONIE RESERVOIR BRIDLE TRAILS



At Salamonie Reservoir, horseback riders are invited to experience over 19 miles of trails through scenic vistas of meadows, forests and water. Bridle trails cross several creeks, climb hills, and travel through forests and grasslands.

Riders visiting Salamonie should ride with an ethical philosophy. Abuses such as littering and riding off of marked trails are damaging to the natural ecosystems, which are provided for the enjoyment of all citizens. Bridle trails are maintained by the DNR in partnership with the Indiana Trail Riders Association.

For more info  
[on.IN.gov/stateparks](http://on.IN.gov/stateparks)