

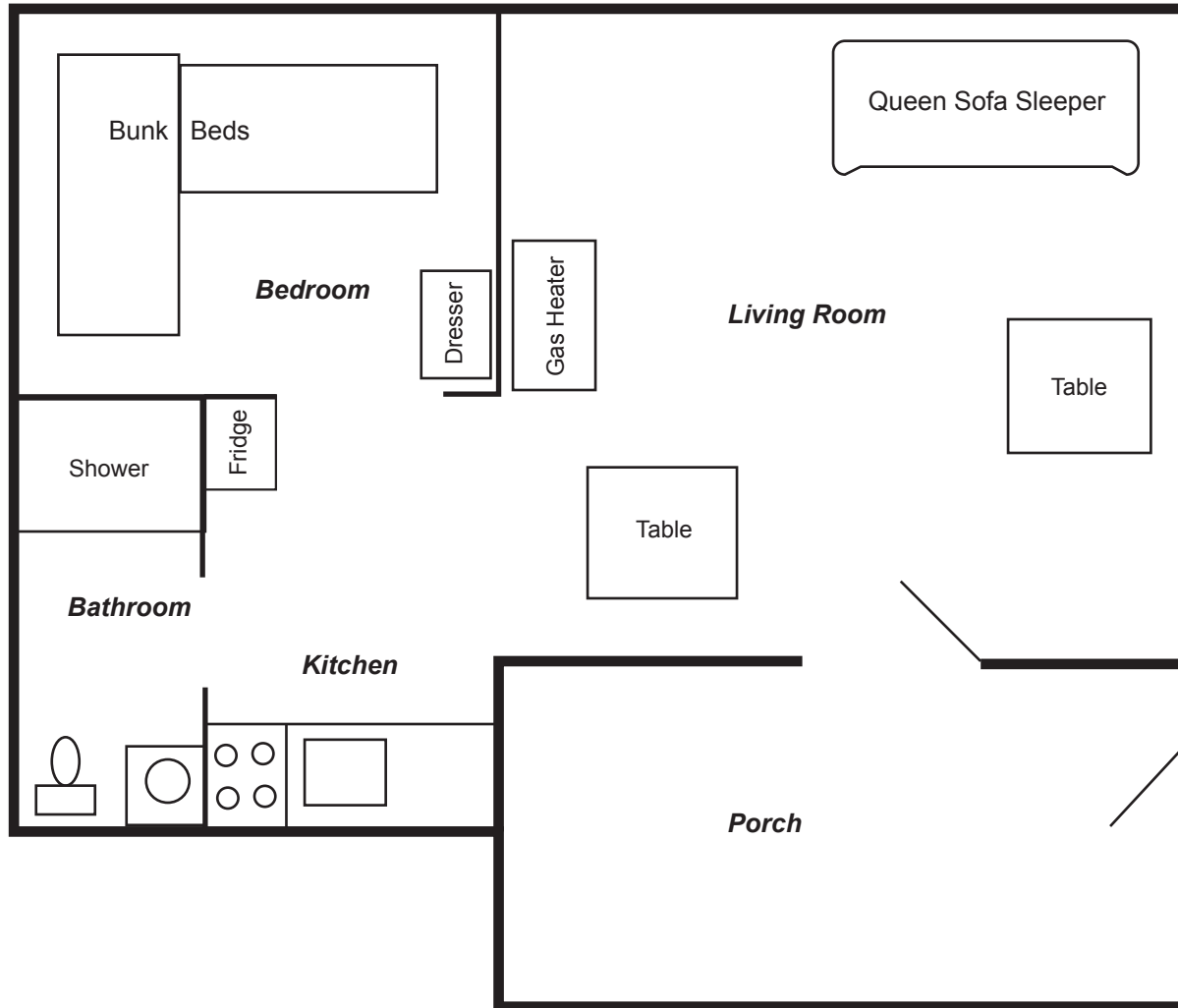


# McCormick's Creek State Park Cabin Floor Plan 1-6 and 8-14

-  No Smoking
-  No Pets



## NEED ASSISTANCE DURING YOUR STAY?

Please contact the park office, gatehouse or other DNR personnel.

**Park Office: (812) 829-2235**

Dial 911 for all emergencies.

## PARK OFFICE HOURS:

Mon.-Fri. 8:00 a.m.-4:00 p.m.

Weekend & seasonal hours vary.

## CHECK IN/OUT TIMES (by local time)

**Cabins** Mon.-Sun. & holidays

Check-in: 4:00 p.m.

Check-out: 11:00 a.m.