

Manitou Wetlands Complex

Manitou Islands Nature Preserve

Burton Nature Preserve (Judy Burton)

Kern Nature Preserve (Bob Kern)

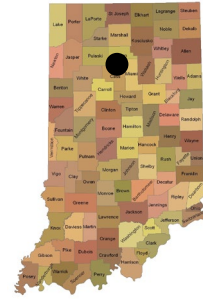
County: Fulton

Size: Manitou: 299 acres

Burton: 130 acres

Kern: 302 acres Total: 731 acres

Ownership: Fish and Wildlife - IDNR; Nature Preserves - IDNR



Location and Access

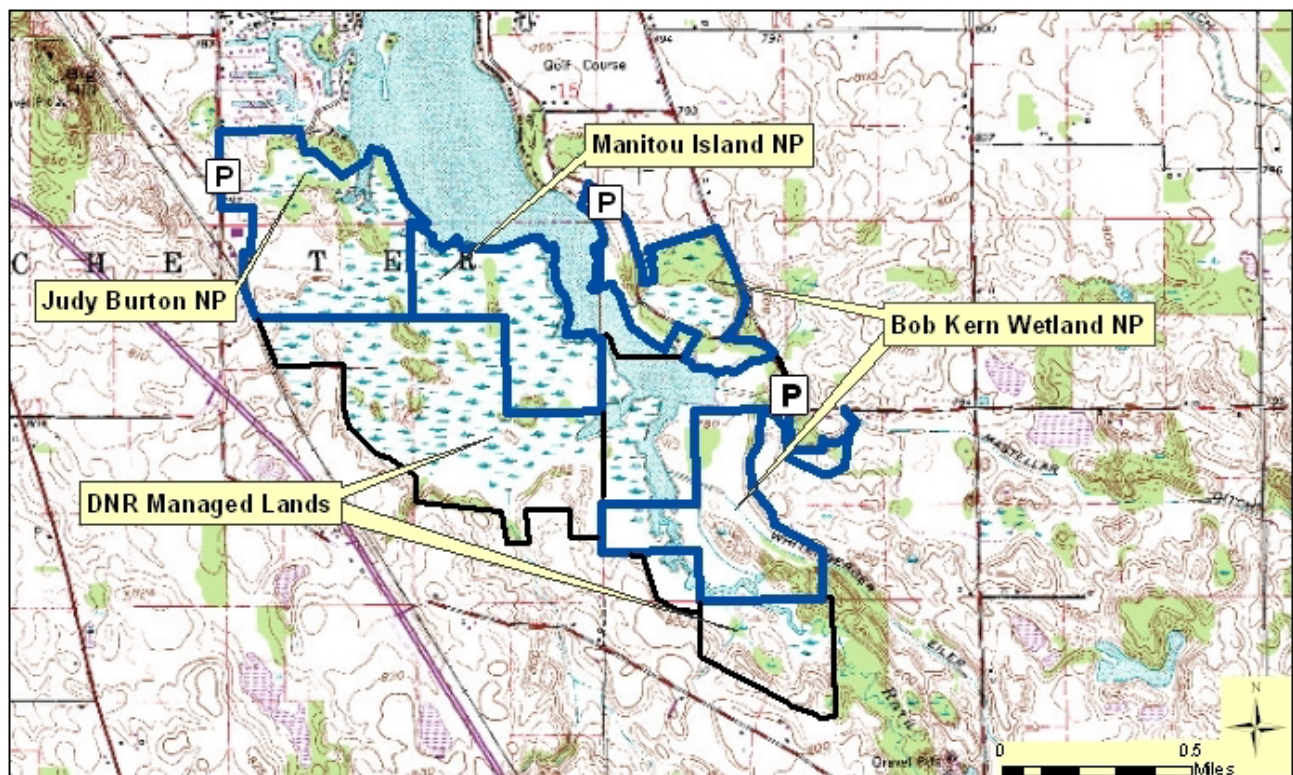
Visitors should use caution as hunting is allowed in this area during season. See the [Fish & Wildlife website](#) below for more details. To reach preserves, take US 31 north toward Rochester. Near the area of Wagoner and CR 300 S, US 31 turns slightly northwest.

Manitou Islands Wetland Conservation Area and Nature Preserve

Access to Manitou Islands is by boat only; No trails. Boat ramp may be closed occasionally throughout the year due to *Hydrilla* infestations. This preserve is on the south end of Lake Manitou, which is just east of Rochester. Boats may be launched at the public fishing site on the east side of the lake.

Burton Nature Preserve

Parking and trails. Take US 31 north toward Rochester. Near the area of Wagoner and CR 300 S, US 31 turns slightly northwest. Look for Wabash Rd on the right. Turn right onto Wabash Rd. Follow it over the old RR embankment (now the Nickel Plate Trail). Continue straight north (do not follow the split to the left). The parking lot will be on the right just after the split. There is a walking trail that connects the Nickel Plate Trail to the Judy Burton trails. Cyclists may also use the Burton parking lot, but cannot ride on the Burton trails. However, they can use the road to access the Nickel Plate trail.

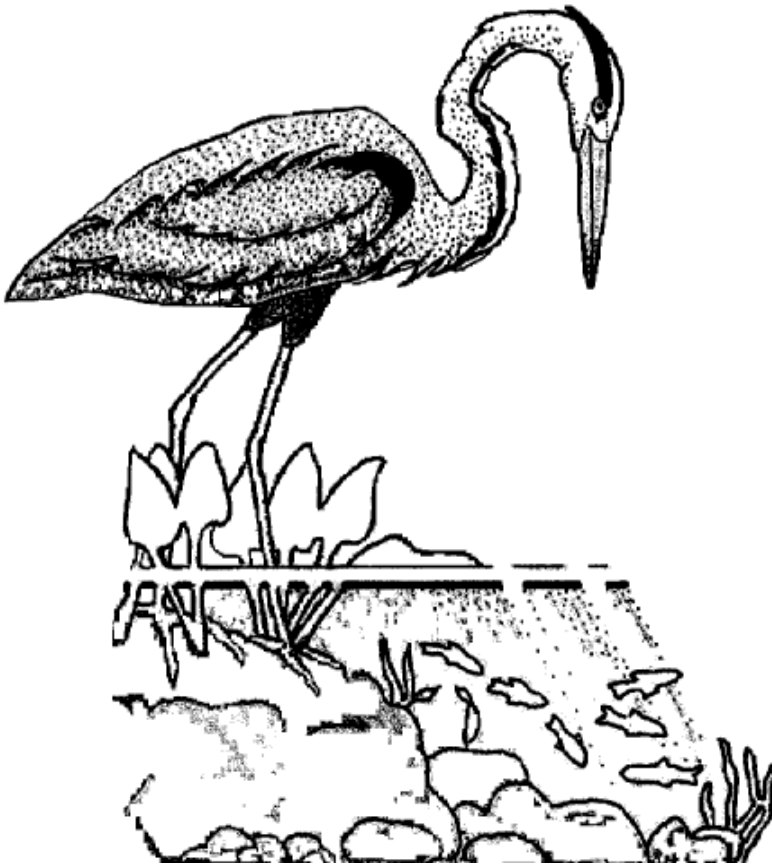


Kern Nature Preserve

Parking. No trails. There are two parking lots.

The North lot has a launch for boats that can be carried by hand, such as canoes and row boats. It may be closed occasionally along with the boat ramps due to *Hydrilla* infestations. To reach the north lot from the south lot, continue northwest on S 400 E for a little over one tenth mile. Angle left on Country Club Drive. Continue northwest on Country Club Drive for 0.6 miles to the gravel lot on the left.

The South lot is a grass and gravel parking area. To reach the south lot, travel north on US 31 toward Rochester. Turn right (E) onto E 350 S, go 1 mile until you reach S 500 E. Turn left (N) onto S 500 E and continue until you reach a fork in the road. Veer right for 0.1 mile, then left for 1.2 miles, staying on S 500 E, until you reach E 150 S. Go left (W) for 0.5 mi and then veer right as the road becomes S 400 E. The lot will be on your left, the SW side of the road.



Description:

Several wetland communities are found within the preserve. Many acres of high-quality marshland are covered with cattails, lily pads, bulrushes, reed grass and other grasses, sedges and aquatic flowers. Here and there forested islands jut up out of the marshland. Higher islands are forested with oaks and hickories, and low islands with tamarack trees.

Wildlife abounds on the preserve. Marshland birds such as marsh wrens, rails, ducks, herons, red-winged blackbirds, and swamp sparrows are found throughout. Migration time brings even more waterfowl into the area. Muskrats, mink, deer, raccoon, skunks, and opossum are among the many animals that may be seen.

Further Information:

Division of Fish and Wildlife, 402 W. Washington St, Rm. W273, Indianapolis, IN 46204.

(317) 232-4200. www.in.gov/dnr/fishwild/

Division of Nature Preserves Northeast Regional Ecologist, Adam Balzer: abalzer@dnr.in.gov