

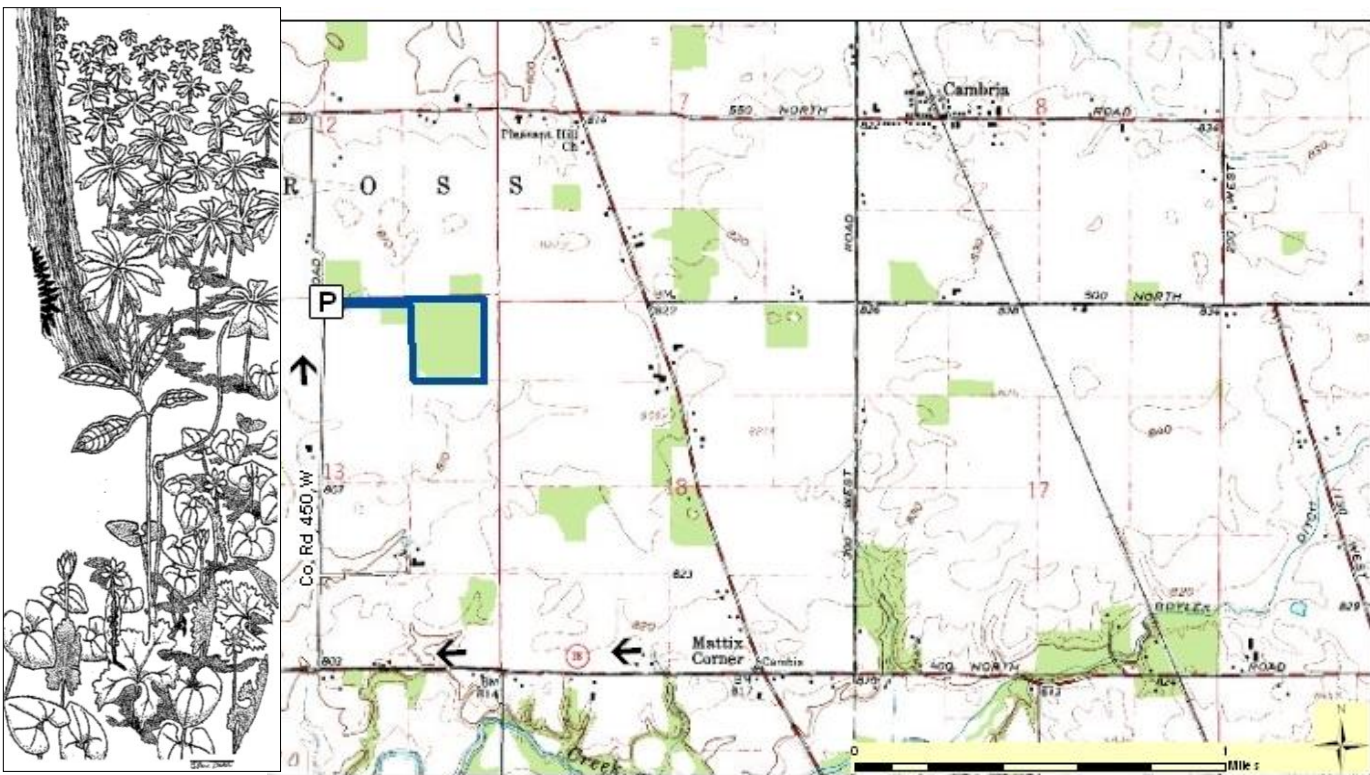
# Bryan Memorial Nature Preserve (Eunice Hamilton Bryan)

County: Clinton                      Size: 29 acres  
Ownership: Nature Preserves - IDNR



## Location and Access

**Parking and trail.** For about 7 miles northwest of Frankfort, take SR 38 west. Turn north on CR 450W to a marked parking lot on the right. A self-guiding nature trail with long and short loops traverses the preserve.



**Description:** This woods stands like an oasis surrounded by farmland. As you approach the preserve notice how tall, dense and even the forest canopy is, compared to woodlots which have been more heavily grazed and timbered. In the preserve, great white oaks, 4 feet in diameter, are found with large red oak, beech, basswood, and shagbark hickory on drier sites. Smaller poorly drained spots along the northern edge of the woods have pin oak, bur oak and red maple. Spicebush, poison ivy, greenbrier, black haw, and pawpaw are common shrubs in drier areas, while buttonbush and winterberry surround a small pond.

Spring wildflowers include yellow and white trout lilies, Dutchman's breeches, toothwort, and spring beauty. These are soon followed by wild blue phlox, Virginia waterleaf, and wild crane's-bill.

## Further Information:

Division of Nature Preserves Central Regional Ecologist, Andrew Reuter: [AReuter@dnr.IN.gov](mailto:AReuter@dnr.IN.gov)