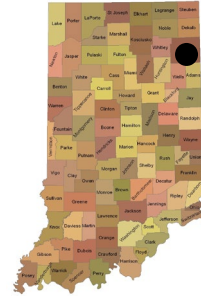


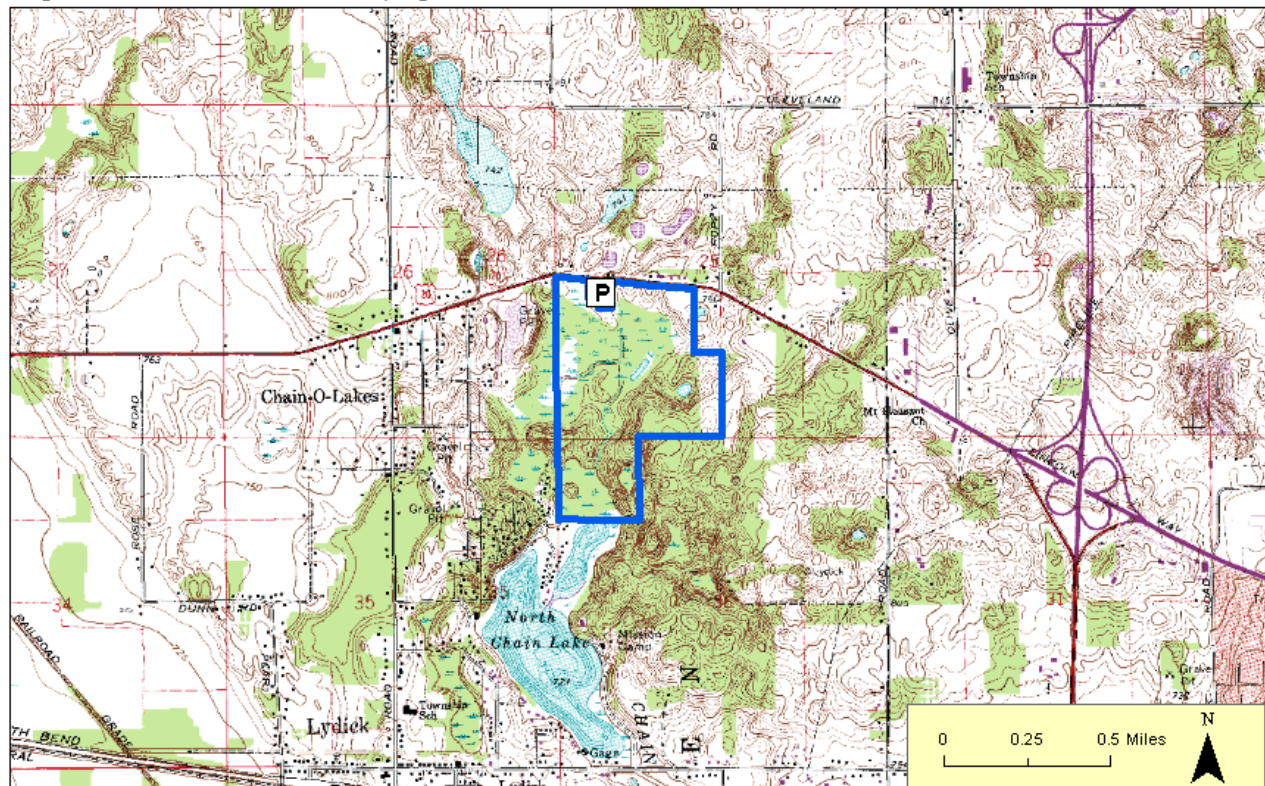
Lydick Bog Nature Preserve

County: St. Joseph Size: 176.46 acres
Ownership: Shirley Heinze Land Trust



Location and Access

Parking and trails. From US 31 take exit 263B for US 20 W towards Michigan City. Continue onto US 20 W/ US 20 Business E for 1.6 miles and parking will be on the south side. From the parking lot a 1.4 mile moderate loop trail includes wetlands, hilly upland forest, and ravines.



Description: This property protects one of the last remaining sphagnum bog habitats in Indiana. Many interesting plant species characteristic of bogs have been identified, including winterberry, tamarack, large cranberry and carnivorous species like round-leaved sundew and pitcher plant. Other wetland types here include marsh, a large riparian corridor, and several kettle hole wetlands – glacier-carved depressions that collect water from the surrounding hills.

The wooded areas are dotted with glacial rocks and feature maple-and-oak forest and savannas dominated by oaks and hickories. Spring and summer offer an ever-changing wildflower display. The preserve is a haven for amphibians and reptiles, and it attracts a wide variety of birdlife.

Further Information:

Shirley Heinze Land Trust, 444 Barker Rd, Michigan City, IN 46360. (219) 879-4725.

Division of Nature Preserves Northeast Regional Ecologist, Adam Balzer: abalzer@dnr.in.gov