

Seidner Dune and Swale Nature Preserve

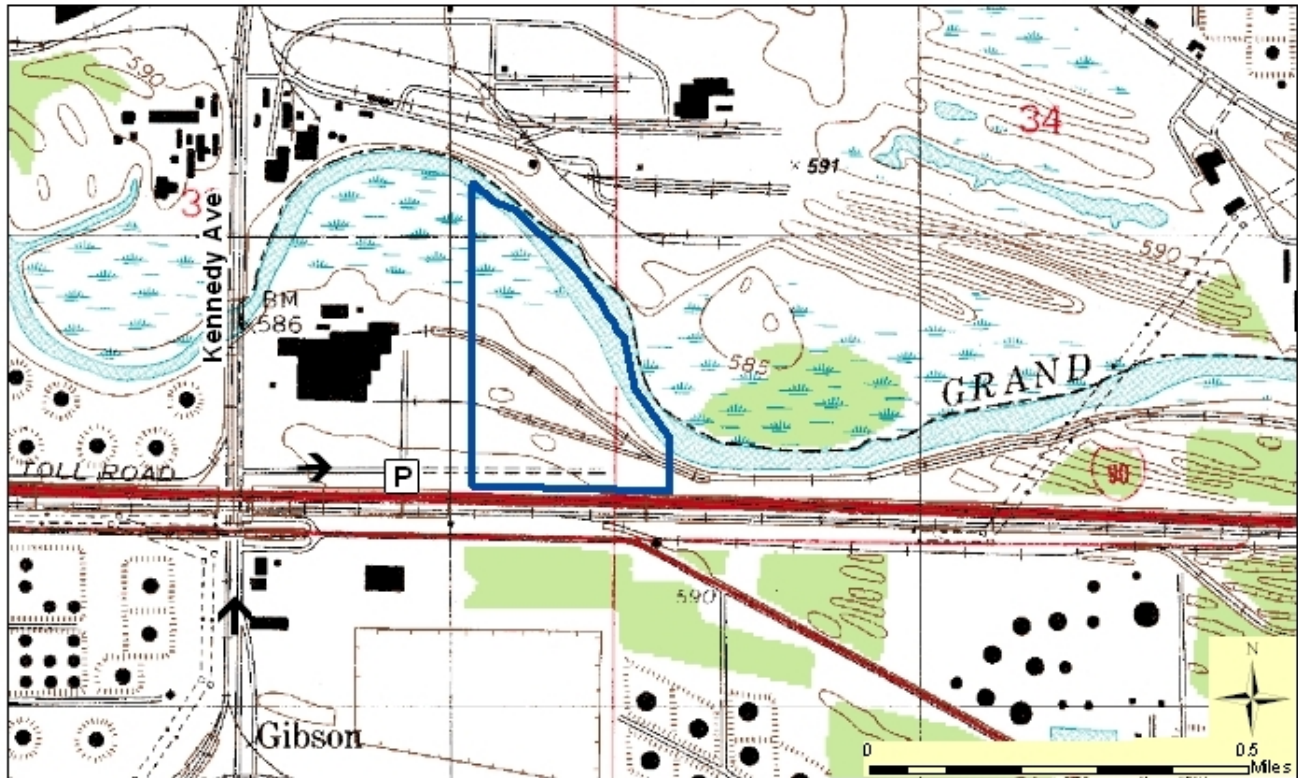
County: Lake Size: 42 acres
Ownership: Shirley Heinze Land Trust



Location and Access

No parking or trails. Walk the abandoned railroad beds.

From I-80/94 or US 20, take Kennedy Ave. north, just past the Indiana Toll Road (I-90) overpass. Turn right (east) onto the first (unnamed) road, which leads to the back entrance of the RESCO plant. Park at the bend in the road and access the preserve via the dirt road that leads east, parallel to the Toll Road. There is no developed trail system, but abandoned railroad beds can be used to traverse the property, which lies between the Toll Road and the river.



Description: This preserve features “dune and swale” topography, with the associated wetlands and oak savanna, and a floodplain marsh along the Grand Calumet River. Over 250 species of plants have been identified on the site, including several rare species that have strict habitat requirements. Notable plants include wild lupine, harebell, fringed gentian, blue-flag iris, white wild indigo, side-oats grama grass, prairie lily, blazing star and many others. The site is managed by SHLT to maintain biological diversity and to preserve the fire dependent communities that occur here.

Further Information:

Shirley Heinze Land Trust, 444 Barker Rd, Michigan City, IN 46360. (219) 879-4725. www.heinzetrust.org
Division of Nature Preserves Grand Calumet Regional Ecologist, Emily Stork: estork@dnr.in.gov