

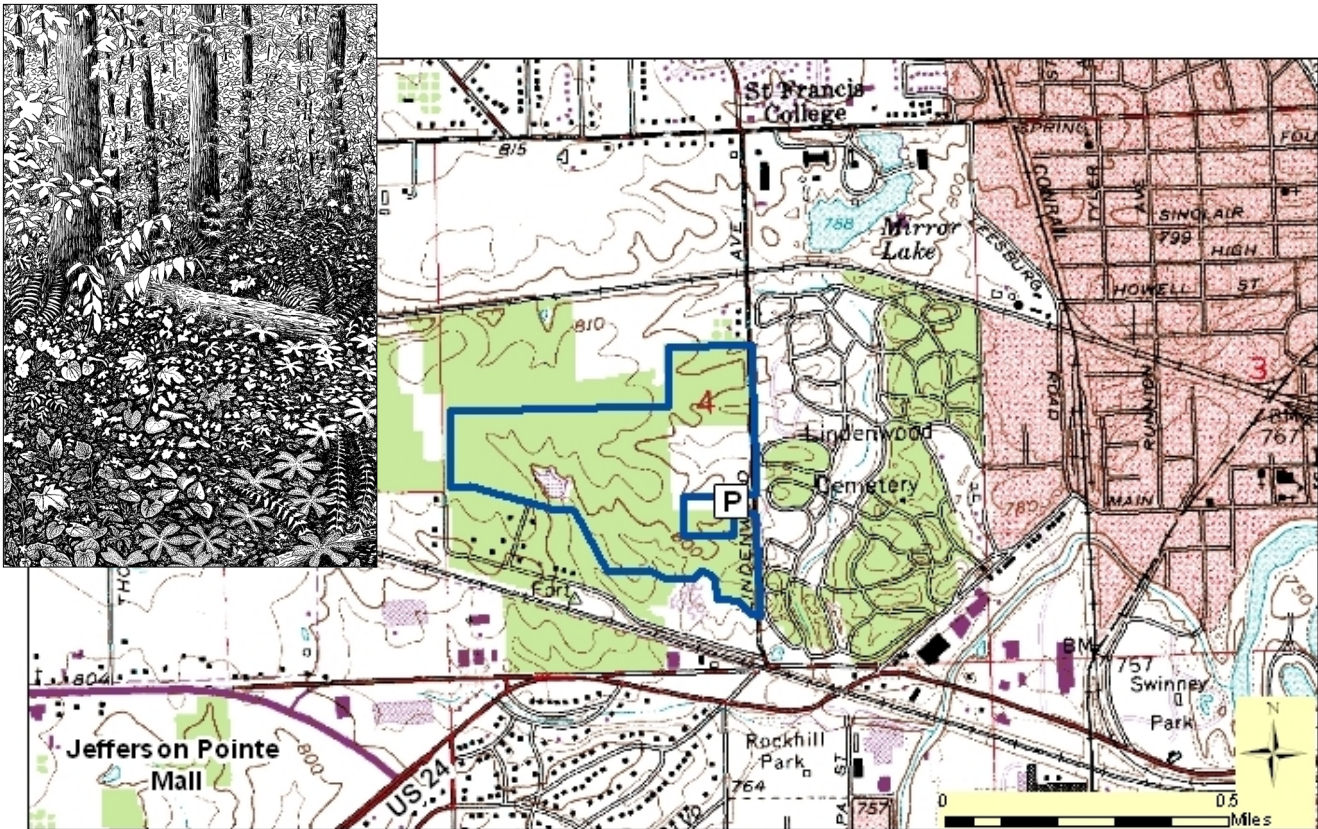
Lindenwood Nature Preserve

County: Allen Size: 86 acres
Ownership: Fort Wayne Parks and Recreation



Location and Access

Parking and Wheelchair-accessible trail. Preserve is a portion of Lindenwood Park, which is open April - October. Located on the west side of Fort Wayne, between US Hwy 24 (W. Jefferson Blvd.) and Spring St. From US Hwy 24, turn north onto Lindenwood Ave. The preserve is on the west side of street across from the Lindenwood Cemetery. Parking lot at park entrance. There are hiking trails and an active interpretive program.



Description: The preserve is unique in that it represents a sizable urban, high-quality, mature oak-hickory forest dominated by white and red oaks, and shagbark hickories. It has a rich and diverse display of wildflowers, particularly in the spring.

Further Information:

Lindenwood Nature Preserve, 600 Lindenwood Ave, Fort Wayne, IN 46805. (260) 427-6740.

www.fortwayneparks.org/

Division of Nature Preserves East Central Regional Ecologist, Taylor Lehman: tlehman@dnr.IN.gov