

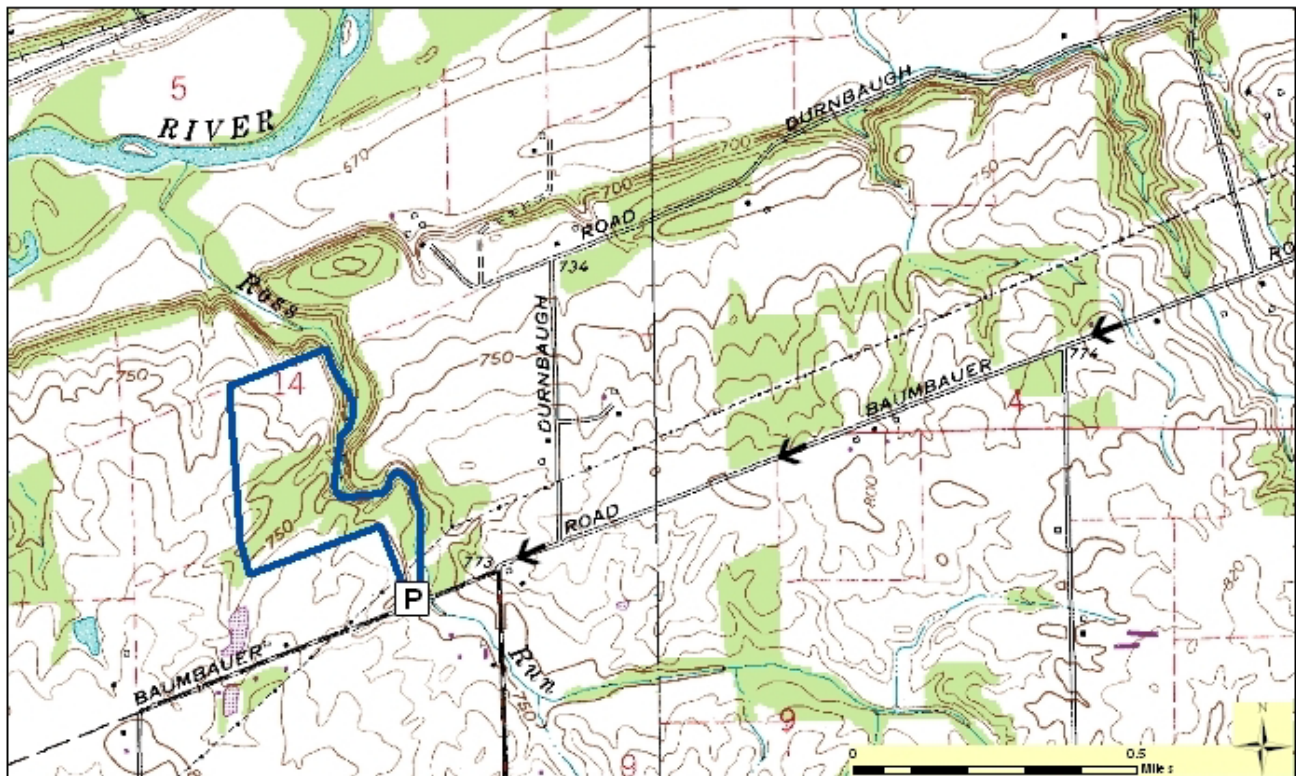
Hathaway Preserve at Ross Run Nature Preserve

County: Wabash Size: 72 acres
Ownership: ACRES Land Trust



Location and Access

Parking and trail. From Wabash, take US 24 east to 300E and turn right (S) toward Lagro. Travel through Lagro as 300E turns into SR 524. Follow SR 524 for 1.5 miles to Baumbauer Rd and turn right (W). Preserve is on right in 2.2 miles.



Description: Hathaway Preserve at Ross Run contains much of Ross Run, a tributary of the Wabash River, a deeply incised bedrock gorge of Silurian Age limestone and dolomite 400 million years old. Notable geological features include waterfalls, flumes, fossil reefs, and 50' tall cliffs. Such a collection of geological features in one locality is exceptional especially in the northern half of Indiana. Also included in the nature preserve are biologically rich mesic upland forest, dry upland forest, floodplain forest, and limestone cliff natural communities.

Further Information:

ACRES Land Trust, 1802 Chapman Rd, Hometown, IN 46748. (260) 637-2273. www.acreslandtrust.org.
Division of Nature Preserves Northeast Regional Ecologist, Adam Balzer: abalzer@dnr.in.gov