

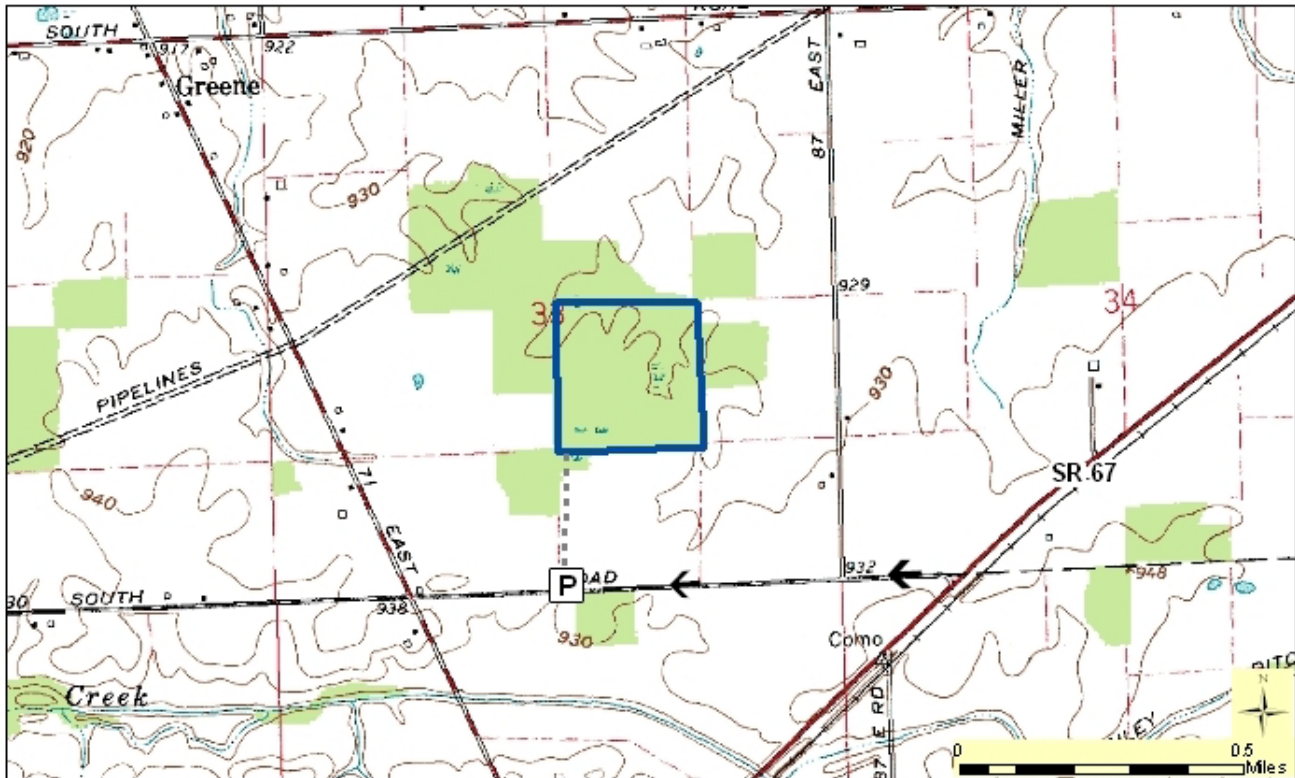
Bell-Croft Woods Nature Preserve

County: Jay Size: 40 acres
Ownership: Nature Preserves - IDNR



Location and Access:

Parking and trail. The nature preserve is located about 1 mile due north of the community of Como, on SR 67. It can be accessed from the parking lot located along W 300 S (CR 130 S). An access lane through a mature fencerow leads to a loop trail.



Description: Bell-Croft Woods is a mixed old-growth stand with numerous large trees of a variety of species including white oak, red oak, bur oak, pin oak, beech, sugar maple, shagbark hickory, red elm, black cherry, basswood, and cottonwood. This “flatwoods” natural community is a remnant of the large forest that once covered much of east-central Indiana. It has a fine display of spring wildflowers. A small buttonbush swamp provides a breeding site for frogs and salamanders.

Further Information:

Division of Nature Preserves East Central Regional Ecologist, Ryan Smith: rysmith1@dnr.in.gov