

United States Department of the Interior
National Park Service

National Register of Historic Places Registration Form

This form is for use in nominating or requesting determinations for individual properties and districts. See instructions in National Register Bulletin, *How to Complete the National Register of Historic Places Registration Form*. If any item does not apply to the property being documented, enter "N/A" for "not applicable." For functions, architectural classification, materials, and areas of significance, enter only categories and subcategories from the instructions.

1. Name of Property

Historic name: Kirkwood Park Historic District

Other names/site number: _____

Name of related multiple property listing:

Residential Planning and Development in Indiana, 1943-1970

(Enter "N/A" if property is not part of a multiple property listing)

2. Location

Street & number: Bounded by Coliseum Boulevard on the north, Glenhurst Avenue on the east, Springfield Avenue on the south, and Crescent Avenue on the west

City or town: Fort Wayne State: IN County: Allen

Not For Publication: ☐

Vicinity: ☐

3. State/Federal Agency Certification

As the designated authority under the National Historic Preservation Act, as amended,

I hereby certify that this x nomination ____ request for determination of eligibility meets the documentation standards for registering properties in the National Register of Historic Places and meets the procedural and professional requirements set forth in 36 CFR Part 60.

In my opinion, the property x meets ____ does not meet the National Register Criteria. I recommend that this property be considered significant at the following level(s) of significance:

____ national ____ statewide x local

Applicable National Register Criteria:

x A ____ B x C ____ D

Signature of certifying official/Title:

Date

Indiana DNR-Division of Historic Preservation and Archaeology

State or Federal agency/bureau or Tribal Government

Kirkwood Park Historic District
Name of Property

Allen County, IN
County and State

In my opinion, the property ___ meets ___ does not meet the National Register criteria.

Signature of commenting official:

Date

Title :

State or Federal agency/bureau
or Tribal Government

4. National Park Service Certification

I hereby certify that this property is:

- ___ entered in the National Register
___ determined eligible for the National Register
___ determined not eligible for the National Register
___ removed from the National Register
___ other (explain:) _____

Signature of the Keeper

Date of Action

5. Classification

Ownership of Property

(Check as many boxes as apply.)

Private:

☒

Public – Local

☒

Public – State

☐

Public – Federal

☐

Kirkwood Park Historic District

Name of Property

Allen County, IN

County and State

Category of Property

(Check only **one** box.)

Building(s)

☐

District

☒

Site

☐

Structure

☐

Object

☐

Number of Resources within Property

(Do not include previously listed resources in the count)

Contributing

Noncontributing

180

16

buildings

1

0

sites

0

0

structures

3

0

objects

183

16

Total

Number of contributing resources previously listed in the National Register 0

6. Function or Use

Historic Functions

(Enter categories from instructions.)

DOMESTIC: single dwelling

RECREATION AND CULTURE: outdoor recreation

Current Functions

(Enter categories from instructions.)

DOMESTIC: single dwelling

RECREATION AND CULTURE: outdoor recreation

Kirkwood Park Historic District
Name of Property

Allen County, IN
County and State

7. Description

Architectural Classification

(Enter categories from instructions.)

LATE 19TH AND 20TH CENTURY REVIVALS: Colonial Revival

LATE 19TH AND 20TH CENTURY REVIVALS: Tudor Revival

OTHER: Ranch

OTHER: American Small House

Materials: (enter categories from instructions.)

foundation: CONCRETE
walls: BRICK
WOOD: Weatherboard
roof: ASPHALT
other: STONE: Limestone
SYNTHETICS: Vinyl

Narrative Description

(Describe the historic and current physical appearance and condition of the property. Describe contributing and noncontributing resources if applicable. Begin with a **summary paragraph** that briefly describes the general characteristics of the property, such as its location, type, style, method of construction, setting, size, and significant features. Indicate whether the property has historic integrity.)

Summary Paragraph

The Kirkwood Park Historic District is located on Fort Wayne's northeast side within the original beltway around the city. It consists of the original plat, 1938, and five subsequent plat additions between 1940 and 1950 designed by H. K. Gottschalk and noted Fort Wayne planner, Adolph Hofer. The district features mostly mid-sized homes in the Colonial Revival and Ranch styles. A main feature of the development is the large semicircular park in the west half of the neighborhood fronted by homes on Kirkwood Circle and Kirkwood Drive.

Kirkwood Park Historic District
Name of Property

Allen County, IN
County and State

Narrative Description

The Kirkwood Park Historic District is located approximately two miles northeast of downtown Fort Wayne, Indiana, on the east side of Crescent Avenue (former State Roads 14 and 37) and within the original beltway around the city known as Coliseum Boulevard/Highway 30 (now Highway 930). In 1938, William L. and Inez (Kirkwood) Jones, husband and wife, hired surveyor H. K. Gottschalk to plan the first part of the development which presumably is named for Inez Jones' maiden name. Sections B through F were planned by prominent local surveyor Adolph K. Hofer. Together, the sections form a consistent and congruent neighborhood of concrete-paved streets with rolled curbs, streetlights, deep front yard setbacks with mature trees in their natural growth patterns prior to development of the plat. The neighborhood is tightly-bounded by Crescent Avenue to the west, Coliseum Boulevard to the north, Brown Mackie College to the east, and Lion's Park and more modern developments to the south. Because some of the streets do not align to cardinal points on a compass, generally where there is deviation like on Kirkwood Drive, descriptions shall be east for southeast-facing houses and west for northwest-facing houses, etc.

One of the prominent features of Kirkwood Park Historic District is the semicircular-planned streets: Kirkland Avenue and Kirkwood Circle. These streets comport to the semicircular park central to the west half of the district. Kirkwood Circle and Kirkwood Drive front the park to the east and west, respectively. The park, which features a mature grove of trees and lawn, is a contributing site (photos 23, 27). As the semicircular-designed Kirkwood Avenue/Springfield Avenue intersect with Kirkwood Drive, which runs parallel to Crescent Avenue, small landscape islands are located in the development (left side of photo 14). The development's east half conforms to a more rigid grid plan and includes a drive that leads out of the district to the south (Rolston Street). Two entrances to the district are located at the north end of Kirkwood Drive and west end of Springfield Drive. A pair of brick piers with stone caps and tablet carved with name of the development flank the north entry (seen in photo 29); a single matching pier is located on the north side of the entry onto Springfield Drive from Crescent Avenue. These three piers are considered contributing objects.

The housing types and dates of construction are fairly consistent through the six plats, with minor differentiation from the earliest to latest plat additions which consist of more standardized Ranch homes in portions of additions E and F in the east end of the development. Kirkwood Park additions, A-F, are under the auspices of the Kirkwood Park Homeowners Association. The district has 160 homes (primary resources), built primarily in the Colonial Revival, Cape Cod, and Ranch styles, as well as a few American Small Houses spanning a concentrated development period of 1938-1963. Garages are included in the resource count. Only seven homes are considered non-contributing due to substantial changes. For example, 3534 Kirkwood Circle has an addition that includes the second story. Only one home, built in 1976 at 2627 Merivale Street, falls outside the period of significance.

Kirkwood Park Historic District

Name of Property

Allen County, IN

County and State

A complete list of resources follows:

Glenhurst Avenue

East side going south

3520 Glenhurst. Linear Ranch, c. 1955. Contributing

3512 Glenhurst. Massed Ranch, c. 1955. Contributing

3506 Glenhurst. Ranch, c. 1955. Contributing
Garage, c. 1955. Contributing

3440 Glenhurst. Massed Ranch, c. 1955. Contributing

3434 Glenhurst. Ranch, c. 1955. Contributing

3430 Glenhurst. Ranch, c. 1955. Contributing

3420 Glenhurst. Ranch, c. 1955. Contributing

3410 Glenhurst. American Small House, c. 1955. Contributing

Left side of photo 01

The one-and-a-half story house features an L-shaped plan with side gables and a projecting front-gabled section on the north half of its façade. The first story is composed of random-coursed flagstone and gables feature clapboards. The roof is covered with asphalt shingles. The entry is located in a cut-out corner of the front-gabled section's south end. The entry door is wood with a small window in the top. The entry porch features metal railings and trellis that supports the roof on the front corner. An 8/8 wood window with stone sill is centered in the first story north of the entry porch. Two wood windows are in the first story south of the entry. The north window is wood, divided into twelve panes, and is located in a small bay that jetties out and trimmed with wood. The south window is wood, divided into nine panes, and features a wood flower box. A dormer with gabled roof and vinyl siding is in the south half of the façade and does not appear to be original. A gable-front garage, set back from the façade, is attached with a breezeway on the south end of the house. This was the home of Paul and Jean Partee during the late 1950s and early 1960s. The couple appears to have been retired by 1960, being listed with no occupation in the 1960 city directory.¹

3404 Glenhurst. Ranch, c. 1955. Contributing

Right side of photo 01

¹ Ft. Wayne City Directory, 1960, pg. 765

Kirkwood Park Historic District

Name of Property

Allen County, IN

County and State

Glenhurst Avenue

West side going north

3411 Glenhurst. American Small House, c. 1955. Contributing

3417 Glenhurst. American Small House, c. 1955. Contributing

Left side of photo 02

The one-and-a-half story, side-gabled house is covered with clapboards. The eaves are tight to the walls and the roof is covered with asphalt shingles. The façade features cascading, lower cross gables over sections that project forward. A middle section projects forward, similar to a T-plan. The side-gabled section has a 6/6 wood window in its south end and a large wood window divided into twenty panes in its north end. The entry is located in the middle section's north end and features a wood door with full window and simple concrete stoop with metal railing. A bay with gabled roof projects forward south of the entry and features a wood window divided into twenty panes. A gable-front garage connected by a breezeway is on the south end of the house.

This was the home of William and Delores Vining during the late 1950s and early 1960s.

William Vining was listed as a staff accountant with local manufacturer Essex Wire in the 1960 city directory.²

3425 Glenhurst. American Small House, c. 1950. Contributing

Right side of photo 02

3433 Glenhurst. American Small House, c. 1950. Contributing

3439 Glenhurst. Courtyard Ranch, c. 1955. Contributing

Photo 03

The one-story house has an H-shaped plan with a side-gabled center section and narrow wings with gabled roofs that extend from the front and back of the house on the north and south ends of the center section. The house has vinyl siding, 1/1 wood windows, and asphalt shingles on the roof. The façade features a porch that extends between the outer wings. It has a shed roof supported by wood posts between which are wood balustrades. A wood entry door is located in the south end of the porch and a wood window composed of two casements that flank a wide center pane is centered in the wall north of the entry. The south wing features a large metal garage door. The north wing features a 1/1 wood window.

This was the home of Edwin W. and Marjorie Misselhorn during the late 1950s and early 1960s.

Edwin Misselhorn's occupation is listed as an engineer with General Electric Company in Fort Wayne in the 1960 city directory.³

² Ft. Wayne City Directory, 1960. Pg. 1038

³ Ft. Wayne City Directory, 1960. Pg. 695

Kirkwood Park Historic District

Name of Property

Allen County, IN

County and State

3507 Glenhurst. Massed Ranch, c. 1955. Contributing
Seen on the right side of photo 03

3511 Glenhurst. Ranch, c. 1955. Contributing

3517 Glenhurst. Massed Ranch, c. 1955. Contributing

3523 Glenhurst. Massed Ranch, c. 1955. Contributing
Left side of photo 04

The one-story brick house has 1/1 wood windows, brick sills, and a tall frieze board at the top of its walls. The hipped roof, which forms multiple hips over a rambling footprint, is covered with asphalt shingles. The façade features a wide, center section with entry porch at its north end in a cutaway corner. The wood entry door has a window in its top half. The porch features a metal trellis on its outside corner that supports the roof. A large wood window with wide, fixed pane flanked by 1/1 sashes is centered in the wall south of the entry porch. A metal garage door is north of the entry door. It features limestone ashlar tabbed into each side of the door opening. The south section projects forward and features a wide 1/1 wood window.

This was the home of Ralph and Wanda McNees during the late 1950s and early 1960s. Ralph McNees was listed as a maintenance foreman with Magnavox Corporation in the 1960 city directory.⁴

3533 Glenhurst. Ranch, c. 1955. Contributing
Garage, c. 1960. Contributing
Middle of photo 04

3539 Glenhurst. Massed Ranch, c. 1955. Contributing
Right side of photo 04

Rolston Avenue

East side going south

3540 Rolston. Ranch, c. 1955. Contributing
Garage, c. 1990. Non-contributing

3532 Rolston. Massed Ranch, c. 1955. Contributing

3528 Rolston. Massed Ranch, c. 1955. Contributing

3520 Rolston. Ranch, c. 1955. Contributing

3510 Rolston. Massed Ranch, c. 1955. Contributing

⁴ Ft. Wayne City Directory, 1960. Pg. 664

Kirkwood Park Historic District

Name of Property

Allen County, IN

County and State

3504 Rolston. Massed Ranch, c. 1955. Contributing

3440 Rolston. Cape Cod, c. 1950. Contributing

Left side of photo 05

Garage, c. 1960. Non-contributing

The one-and-a-half story, side-gabled house has a concrete foundation and its walls are covered with aluminum siding. The house has 6/1 wood windows and the roof is covered with asphalt shingles. The façade features a concrete stoop and wood entry door centered on the first story. The door has a window in its top half and simple entry surround that is covered with metal. Projecting three-sided bays with cutaway corners flank the entry. They feature casement windows flanking a wide fixed window. These appear to be modern, c. 1990, additions. The roof features two dormers, also sided with metal, with 6/1 wood windows and gabled roofs.

John and Jean Kreider has made this their home in the late 1940s and lived here into the 1960s. John Kreider was a conductor for the Pennsylvania Railroad during the 1950s-1960s.⁵

3432 Rolston. American Small House, c. 1950. Contributing

3424 Rolston. Colonial Revival, c. 1950. Contributing

3420 Rolston. Cape Cod, c. 1950. Contributing

Garage, c. 1960. Contributing

3414 Rolston. Colonial Revival, c. 1950. Contributing

Rolston Avenue

West side going north

3411 Rolston. Massed Ranch, c. 1950. Contributing

Left side of photo 06

3415 Rolston. Garrison Colonial Revival, c. 1950. Contributing

Right side of photo 06

The two-story, front-gabled house features a breezeway and gable-front garage with two garage doors on its north end. The house has clapboards, 6/6 wood windows, and narrow cornice trim at the top of the walls. The roof is covered with asphalt shingles. The front façade features brick on the first story and the second story jetties out on the front wall. The entry is located in the north end of the first story and features a concrete stoop and simple surround with pilasters. The wood entry door has a window in its top half. A pair of large windows with eight panes each is centered in the wall south of the entry. The second story features two 6/6 wood windows and a

⁵ Ft. Wayne City Directory, 1950. Pg. 321

Kirkwood Park Historic District

Allen County, IN

Name of Property

County and State

round attic vent centered in the gable. The garage also features brick with two wood garage doors. The garage gable is covered with clapboards and it also features a small round attic vent.

The home belonged to William and Gertrude Hudson during the late 1940s through early 1960s. William Hudson is listed as an engineer at Tokheim Oil Tank & Pump Company in the 1950 city directory.⁶ By 1960, William had died and Gertrude was listed as a widow and a saleswoman for the House of Golden in the 1960 city directory.⁷

3423 Rolston. Linear Ranch, c. 1955. Contributing

3429 Rolston. Ranch, c. 1955. Contributing

3441 Rolston. Colonial Revival, c. 1950. Contributing

Garage, c. 1950. Contributing

Left side of photo 07

3501 Rolston. Ranch, c. 1955. Contributing

Right side of photo 07

The one-story house has clapboards and 1/1 wood windows. The hipped roof is covered with asphalt shingles. A breezeway connects a small garage with hipped roof to the south side of the house. The façade features a large picture windows flanked by 1/1 wood windows in the south half. The north half features a bay that slightly projects with hipped roof and cutaway entry in its south end. The wood entry door features three small windows in the top half. A 1/1 wood windows is north of the entry. The breezeway features a wood door with window in the top in its north end and a picture window flanked by 1/1 wood windows. The wood garage door has a row of windows near the top.

The home belonged to Leonard and Florence Beckman, Jr. in the late 1950s and early 1960s. Leonard Beckman was a bartender for a local establishment named The Stein.⁸

3511 Rolston. Massed Ranch, c. 1955. Contributing

3515 Rolston. Ranch, c. 1950. Contributing

3517 Rolston. Massed Ranch, c. 1950. Contributing

The one-story house features an oblong box with a wide, projecting bay in the center. The house has limestone ashlar that form a wainscot on the bay and front of the north half of the oblong box. Vinyl siding covers the remainder of the house. The house has modern wood casement windows and the low-pitched hipped roof is covered with asphalt shingles. The façade features a row of three small casement windows and a pair of casement windows in the north half of the oblong box. A row of three casement windows is centered in the south half of the oblong box.

⁶ Ft. Wayne City Directory, 1950. Pg. 275

⁷ Ft. Wayne City Directory, 1950. Pg. 479

⁸ Ft. Wayne City Directory, 1960. Pg. 62

Kirkwood Park Historic District

Allen County, IN

Name of Property

County and State

The projecting bay features a cutaway corner porch on its north end. A pillar of limestone ashlar supports the outside corner of the roof. The wood entry door has a window in its top half. A row of three large casement windows is in the front wall of the bay south of the porch.

This was the home of Harold T. and Velma Cooke during the late 1950s and early 1960s. Harold Cooke was listed as an agent with Lincoln National Life Insurance Company in the 1960 city directory.⁹

3535 Rolston. Ranch, c. 1950. Contributing

Kirkland Avenue

East side going south

3544 Kirkland. Ranch, c. 1950. Contributing

Garage, c. 1950. Contributing

Left side of photo 08

3540 Kirkland. Half-Courtyard Ranch, c. 1950. Contributing

3530 Kirkland. Massed Ranch, c. 1950. Contributing

3524 Kirkland. Linear Ranch, c. 1950. Contributing

3518 Kirkland. Colonial Revival, c. 1950. Contributing

Right side of photo 09

The two-story, auburn-colored brick house has wood casement windows and a hipped roof covered with asphalt shingles. A garage, covered with wood planks and a thin column of brick on its north corner, is on the north side of the house. The façade is symmetrically arranged with a wood entry door with side-lites and segmental-arched transom centered on the first story. Small casement windows flank the entry. The first and second stories feature a row of three casement windows in the north and south half of the façade. The windows have brick sills on both stories and lintels on the first story. A large, fixed window is centered in the second story.

This was the home of Waldemar and Esther Burhop during the late 1940s into the 1950s. The Burhops are listed as the owners of the Band Box, presumably a music venue in Fort Wayne in the 1950 city directory.¹⁰

3510 Kirkland. Compact Ranch, c. 1950. Contributing

3504 Kirkland. Colonial Revival, c. 1950. Contributing

3434 Kirkland. Garrison Colonial Revival, c. 1950. Contributing

⁹ Ft. Wayne City Directory, 1960. Pg. 195

¹⁰ Ft. Wayne City Directory, 1950. Pg. 96

Kirkwood Park Historic District

Name of Property

Garage, c. 1950. Contributing

Allen County, IN

County and State

3430 Kirkland. Ranch, c. 1950. Contributing

3424 Kirkland. American Small House/Tudor Revival, c. 1955. Contributing

Left side of photo 10

The one-and-a-half story house is composed of dark red-colored brick and features side-gables with cascading lower front gables on projecting sections. The house has stone ashlar toothed in at corners, around the entry, and on the wide front chimney to give it a rusticated appearance. The roof is covered with asphalt shingles. The façade features a gable-on-hip section with diamond-shaped window and entry door in its north half. A gabled roof section abuts the entry door area to the south. The entry door is wood and has a window in its top and a concrete stoop. The front gable features a window with a fixed pane flanked by casement windows. It has a stone sill and lintel. A wide chimney with stone trim is north of the stoop. A window with a fixed pane flanked by casement windows is north of the chimney.

The home belonged to Virgil and Anna Freeman during the late 1950s into the 1960s. Virgil Freeman's occupation is listed as a driver for North American Van Lines in the 1960 city directory.¹¹

3414 Kirkland. Linear Ranch, c. 1950. Contributing

Right side of photo 10, left side of photo 11

3402 Kirkland. Cape Cod, c. 1950. Contributing

Right side of photo 11

Garage, c. 1950. Contributing

The side-gabled house features random-laid, rock-faced Bedford limestone ashlar on its first story and clapboards on its gables. The house has 6/6 wood windows and a tall frieze board tops the first story walls. The roof is covered with asphalt shingles. The façade features two 6/6 wood windows in the south half and an entry stoop north of the two windows. The entry is deeply recessed between wood pilasters and features a wood door. The façade north of the entry steps in, but retains the same Bedford stone and features a 6/6 wood window. Three dormers with 6/6 wood windows and gabled roofs are on the façade; the north dormer is in the section that steps in. The dormers have clapboard siding.

Frank W. and Hilda Smitley lived in the home during the late 1940s and 1950s. Frank Smitley is listed as a realtor with an office at the Gettle Building on Calhoun Street in Fort Wayne in the 1950 city directory.¹²

¹¹ Ft. Wayne City Directory, 1960. Pg. 332

¹² Ft. Wayne City Directory, 1950.

Kirkwood Park Historic District

Name of Property

Kirkland Avenue

West side going north

Allen County, IN

County and State

3403 Kirkland. Colonial Revival, c. 1950. Contributing
Garage, c. 1950. Contributing

3407 Kirkland. Compact Ranch, c. 1950. Contributing
Garage, c. 1990. Non-contributing
Left side of photo 18

3415 Kirkland. American Small House, c. 1945. Contributing
Middle of photo 18
Garage, c. 1945. Contributing

The small, one-and-a-half story gabled-ell house has aluminum siding and wood double-hung windows in 4/4, 6/6, and 8/8 patterns. The roof is covered with asphalt shingles and a wide brick chimney is located on the south façade. The front façade features the projecting front-gabled section on its north half where the entry and stoop are located. The entry, offset to the south, features a wood door with surround composed of pilasters and entablature with wide-overhanging cornice. The stoop has iron railings. A pair of 6/6 wood windows is north of the entry and a wood fan-lite window is centered in the gable. The front wall of the ell features a projecting, three-sided bay with cutaway corners. The front wall of the bay has an 8/8 wood window and the flanking walls feature 4/4 wood windows.

The home belonged to Theodore R. and Carol Schannen during the late 1940s into the 1960s. Theodore Schannen was listed as a department manager for Bowser Incorporated in Fort Wayne in the 1960 city directory.¹³

3423 Kirkland. Colonial Revival, c. 1940. Contributing
Garage, c. 1940. Contributing
Right side of photo 18

3435 Kirkland. Massed Ranch, c. 1950. Contributing

3501 Kirkland. Massed Ranch, c. 1950. Contributing

3513 Kirkland. Ranch/Colonial Revival, c. 1955. Contributing
Photo 19

The one-story, side-gabled house has a projecting gabled section on the south half of its façade. The house has random-coursed stone ashlar on its first story except for a section of vinyl siding on the north half of the façade and in the gables. A tall frieze board tops the walls. The low-pitched roof has cornice returns and is covered with asphalt shingles. The projecting gabled section features a row of four wood casements divided into ten panes. A colonial-inspired metal cupola with weathervane is on the ridge of this section. The wood entry door and a concrete

¹³ Ft. Wayne City Directory, 1960. Pg. 874

Kirkwood Park Historic District

Allen County, IN

Name of Property

County and State

stoop are north of the gabled section. The door has a small window in the top. A small wood window divided into four panes is south of the door. A row of six large, modern wood casement windows is north of the door. They are divided into fifteen panes. A stone chimney is on the north side-gabled wall.

The home belonged to Dr. David and Oma Tennant during the 1950s and 1960s. David L. Tennant is listed as a physician in the 1960 city directory.¹⁴

3525 Kirkland. American Small House, c. 1950. Contributing

3531 Kirkland. Split-level, c. 1955. Contributing

Left side of photo 20

The house has a one-story, side-gabled section in the south half and a two-story, front-gabled section in the north half. Most of the first story is composed of limestone ashlar. The second story is covered with wide wood shakes. The side-gabled section has a large wood window composed of nine awning-style sashes. The front-gabled section projects and has a saltbox-like roof with a lower eave at the south end which features a wide cornice return that functions as a slight roof over the entry. The entry features a raised stoop of ashlar and a wood door. There are two wood garage doors with a row of windows north of the entry, but at a lower level. The second story features a pair of short awning-style wood windows in the south half and one short awning-style window near the north end.

This home was the residence of Ray P. and Maxine Hiffernan during the 1950s and 1960s. Ray Hiffernan was the manager of the office of Merrill Lynch, Pierce, Fenner, and Smith in 1960.¹⁵

3535 Kirkland. Colonial Revival, c. 1950. Contributing

Right side of photo 20

Kirkwood Circle

East side going south

3626 Kirkwood Circle. Courtyard Ranch, 1950. Contributing

Photo 21

The one-story house has a C-shaped plan with a middle section covered with a hipped roof and wings at either end (east/west) that project forward with gabled roofs. The walls are composed of Bedford limestone ashlar with a tall frieze board at the top of the walls. The gables have vinyl siding and round vents centered in the attic. The middle section has a short wainscot of brick topped by stone. A wood entry door with window in the top and wide side-lite (divided into three panes) is in the west end. A wide, tall chimney composed of ashlar is off-centered to the east. The chimney is flanked by windows that feature a wide middle sash flanked by casements divided into five panes. The front wall of the west wing features a pair of wood casement

¹⁴ Ft. Wayne City Directory, 1960. Pg. 998

¹⁵ Ft. Wayne City Directory, 1960. Pg. 448

Kirkwood Park Historic District

Allen County, IN

Name of Property

County and State

windows divided into three panes in the west half and a tall pair of wood casement windows divided into five panes in the east half. The front wall of the east wing features a row of four tall wood casement windows centered in the wall. The windows are divided into five panes.

The house was constructed in 1950¹⁶ and became the home of Kenneth G. and Mildred Matchette. Kenneth Matchette was listed as the president of the Public Service Insurance Company in the 1960 city directory.¹⁷

3620 Kirkwood Circle. American Small House, c. 1950. Contributing

3616 Kirkwood Circle. Monterey Colonial Revival, c. 1950. Contributing

3610 Kirkwood Circle. Colonial Revival, c. 1950. Contributing

3606 Kirkwood Circle. Colonial Revival, c. 1950. Contributing
Garage, c. 1940. Contributing

3602 Kirkwood Circle. Massed Ranch, c. 1950. Contributing

3540 Kirkwood Circle. Linear Ranch/Colonial Revival, c. 1950. Contributing

3534 Kirkwood Circle. Colonial Revival, c. 1950. Non-contributing
Garage, c. 2000. Non-contributing
A recent owner added a second story to this house.

3520 Kirkwood Circle. Colonial Revival, c. 1950. Contributing

3510 Kirkwood Circle. Split-level/Builder Modern, c. 1955. Contributing
Photo 22

The house is composed of a long one-story, side-gabled section that has a slight bend in its north end and a two-story, front-gabled section in its south end. The two-story section's first story functions like a raised basement and the section projects toward the street. The house has a wainscot composed of random-coursed sandstone ashlars. Boards and battens cover the remaining walls and, in the ends, clapboards follow the rake of the gable roof. The house has 1/1 wood windows and the roof has wide overhanging eaves and is covered with asphalt shingles.

The façade features tall metal brackets that carry a pent roof over the garage door on the north side of the house. Three 1/1 windows are located in the garage (front) wall. A row of five 1/1 windows is in the façade west of the garage. A projecting one-story vestibule is located in the south corner of the one-story section. It features a wood entry door in its north wall and side-lites divided into three panes that wrap the corner with one facing north and one facing west. Rising over the south half of the one-story section is a row of four wood clerestory windows covered by

¹⁶ Ft. Wayne City Directory, 1950. Pg. 3630 (note that in some directories, this is listed as 3626 Kirkwood Drive)

¹⁷ Ft. Wayne City Directory, 1960. Pg. 642

Kirkwood Park Historic District

Allen County, IN

Name of Property

County and State

a shed roof extension. The two-story projecting section features a wide bay of ashlar projecting from the center of the wall. Wood 1/1 windows flank the chimney in the first story and pairs of 1/1 wood windows flank the chimney in the second story. A wall of clapboards juts out between the first and second story; it tapers up and outward from the first to second story.

The house was constructed for Ralph H. and Adele Sheets by 1960. Ralph Sheets was listed as the Secretary/Treasurer of his father's company, W. A. Sheets (Wayne Sheets) & Sons in 1950, then became president of the company by 1960.¹⁸

3502 Kirkwood Circle. Ranch, c. 1955. Contributing

Kirkwood Drive

East side going south

Brick entry sign, c. 1960. Contributing Objects (2)

Photo 29

3770 Kirkwood Drive. Colonial Revival, c. 1950. Contributing

Photo 30

The two-story, side-gabled red-colored brick house features a brick breezeway and front-gabled garage on its north end. The home's wood windows are divided into multiple panes and have pairs of metal shutters. The house features an entablature with cornice returns at the top of its walls. Chimneys are centered in each side-gabled wall and the roof is covered with asphalt shingles. A large, metal octagonal cupola is centered on the roof. The front façade is dominated by a two-story porch with a row of four Doric columns that support a tall entablature and flat roof. The entry is centered in the back wall of the porch and features a large wood surround of fluted pilasters, entablature with rows of dentils, and broken pediment with swan-neck top with volutes and an urn. Large wood windows divided into twenty panes flank the entry. The second story features two wood windows divided into twelve panes.

The house belonged to Herbert O. and June Borkenstein during the late 1940s into the 1960s. Herbert was the manager/owner of Borkenstein & Son, a heating and plumbing contractor in Fort Wayne.¹⁹

3812 Kirkwood Drive. Tudor Revival, c. 1945. Contributing

Left side of photo 29

Garage, c. 1950. Contributing

The one-and-a-half story, multi-gabled house is composed of brown-colored brick. The façade features a slightly projecting vestibule and wide chimney composed of limestone ashlar in the south end of the front-gabled section. The vestibule has a gabled roof and tapered walls. The entry has a full-round arched wood door with small windows in the top. The wide chimney rises

¹⁸ Ft. Wayne City Directory, 1960. Pg. 908

¹⁹ Ft. Wayne City Directory, 1950. Pg. 74

Kirkwood Park Historic District

Allen County, IN

Name of Property

County and State

behind and to the south of the vestibule and then divides into two shafts near the top. The wide, front-gabled section features a tapered wall extension on its north end. A pair of 6/6 wood windows is in the first story and a projecting, three-sided oriel bay with cutaway corners projects in the second story/gable wall. The bay rests on a large metal corbel, flared at the top, and has a metal hipped roof. Multi-paned metal windows are in each wall. A one-story extension of the side-gabled section features a pair of 6/6 wood windows south of the chimney. A row of three 6/6 wood windows is in the south end.

The home was the residence for Herman and Esther Schroeder in the late 1940s into the 1960s. Schroeder was the owner of H. J. Schroeder Company, a dealer in refrigerators according to the 1950 city directory.²⁰

3728 Kirkwood Drive. Massed Ranch, c. 1950. Contributing

3718 Kirkwood Drive. Ranch, c. 1950. Contributing

3708 Kirkwood Drive. Massed Ranch, c. 1950. Contributing

Kirkwood Park, c. 1940. Contributing Site

Photos 23 (looking from Kirkwood Circle) and 27 (looking from Kirkwood Drive)

3424 Kirkwood Drive. American Small House, c. 1950. Contributing

Left side of photo 24

The one-and-a-half story, side-gabled house has vinyl siding and 6/6 wood windows. The roof features a lower front gable, tight eaves, and is covered with asphalt shingles. The front gable features a cornice. The deeply-recessed entry is in the west end of the façade. It has a very simple surround with pilasters and pediment. The entry door is wood with a small square window in the top. A wide row of windows is centered below the front gable. The row features a wide center window divided into sixteen panes. It is flanked by 4/4 wood windows. A pair of 6/6 wood windows is in the east end of the façade.

The home belonged to Edgar and Mary Ponader during the late 1940s into the 1950s. Edgar Ponader was a manufacturers' agent operating under the name E. L. Ponader in the 1950 city directory.²¹

3422 Kirkwood Drive. Colonial Revival, c. 1945. Contributing

Right side of photo 24

3420 Kirkwood Drive. American Small House, c. 1950. Non-contributing

Sometime between 2011 and 2023, the owners added a pair of windows and oculus in the southwest front gable (previously only one window was present). The porch was altered by expanding it across the band of windows.

²⁰ Ft. Wayne City Directory, 1950. Pg. 495

²¹ Ft. Wayne City Directory, 1950. Pg. 441

Kirkwood Park Historic District

Name of Property

Garage, c. 1940. Contributing

Allen County, IN

County and State

3404 Kirkwood Drive. Ranch, c. 1950. Contributing

Kirkwood Drive

West side going north

3401 Kirkwood Drive. Colonial Revival, c. 1945. Contributing

3407 Kirkwood Drive. Colonial Revival, c. 1950. Contributing

Garage, c. 1940. Contributing

Left side of photo 25

3415 Kirkwood Drive. Colonial Revival, c. 1945. Contributing

Garage, c. 1940. Contributing

Middle of photo 25

3423 Kirkwood Drive. Tudor Revival, c. 1945. Contributing

Possibly, Sears "Maplewood" kit home. Right side of photo 25

Garage, c. 1945. Contributing

The one-and-a-half story, side-gabled house has a brick foundation, vinyl siding and a wide, front-gabled projecting vestibule and chimney composed of brick with stone trim. The house has 6/6 wood windows and the roof is covered with asphalt shingles. The front façade is dominated by the vestibule and chimney. A brick stoop with iron railings fronts the full-round arched entry. The brick surround features stone tabs and key. The wood entry door features a window divided into six panes in the top half and a blind arch panel. The north wall of the vestibule is tapered while the south wall has a long extension of the roof with flared eave. A metal vent and keystone are located in the top of the gable. The brick chimney rises from the back of the south half of the vestibule and features stone trim where the chimney tapers inward. It is also capped with stone. The vestibule is flanked by 6/6 wood windows; the south window is narrower than the north window.

This house is one of just a few in the district that appears in mid-1940s city directories. In 1946, the house belonged to Harry J. and Bernadette Slack. Bernadette continued to live at the home, after Harry died, into the 1960s. Harry J. Slack was an advertising manager for Bowser Incorporated.²² While very similar to catalog depictions of Sears' Maplewood kit house, this house has a bay window not depicted in catalog renderings.

3433 Kirkwood Drive. Garrison Colonial Revival, c. 1945. Contributing

3435 Kirkwood Drive. Colonial Revival, c. 1945. Contributing

²² Ft. Wayne City Directory, 1946. Pg. 523

Kirkwood Park Historic District

Name of Property

Allen County, IN

County and State

3505 Kirkwood Drive. American Small House, c. 1950. Contributing

3511 Kirkwood Drive. American Small House, c. 1950. Contributing

3517 Kirkwood Drive. American Small House, c. 1950. Contributing

3525 Kirkwood Drive. American Small House, c. 1950. Contributing

3601 Kirkwood Drive. Cape Cod, c. 1950. Contributing

Left side of photo 26

3611 Kirkwood Drive. Cape Cod, c. 1950. Contributing

Middle of photo 26

The one-and-a-half story, side-gabled brick house features 1/1 wood windows with stone sills. The roof is covered with asphalt shingles and two dormers with gabled roofs are on the front façade. The dormers have vinyl siding and 1/1 wood windows. A brick chimney with stone rustication is on the south end of the house. This rustication is used again to form a wide entry surround centered on the front façade. The entry has a concrete stoop and iron railings. The wood door has a window in the top. A pair of 1/1 windows is north of the entry and a window composed of a wide sash flanked by casements is south of the entry. A one-story sunroom with hipped roof projects from the south wall, just west of the chimney.

The home belonged to Harold J. and Alice Schmidt, Jr. during the late 1940s into the 1950s. Harold Schmidt, Jr. was listed as the manager for Stadler Fertilizer Company in the 1950 city directory.²³

3617 Kirkwood Drive. American Small House, c. 1950. Contributing

Right side of photo 26

The one-story gabled house has a breezeway and gable-front garage attached to its south side. The house has clapboards and 6/6 wood windows. The roof features narrow cornice returns and is covered with asphalt shingles. A brick chimney is on the south end of the house just east of the breezeway. The façade features a wide concrete stoop with iron railings on the south half of the front-gabled section. The wood entry door has a window in the top and metal awning over the stoop. A 6/6 wood window is north of the stoop and a small octagonal metal vent is centered in the gable. A window with a wide middle sash flanked by narrow 6/6 double-hung sashes is in the south half of the façade. The breezeway features a wood door and window with small concrete stoop. The garage features a metal garage door and octagonal metal vent in the gable. A colonial-inspired cupola and weathervane is on the garage roof.

This was the residence of Henry J. and Anna Wehr during the late 1940s and 1950s. Henry Wehr was listed as a machine operator for Fort Wayne City Utilities in the 1950 city directory.²⁴

²³ Ft. Wayne City Directory, 1950. Pg. 492

²⁴ Ft. Wayne City Directory, 1950. Pg. 590

Kirkwood Park Historic District

Name of Property

Allen County, IN

County and State

3623 Kirkwood Drive. Cape Cod, c. 1950. Non-contributing
The recently-added porch makes this house non-contributing.

3705 Kirkwood Drive. Ranch, c. 1955. Contributing

3701 Kirkwood Drive. Ranch, c. 1955. Contributing

3715 Kirkwood Drive. American Small House, c. 1955. Non-contributing

3721 Kirkwood Drive. Ranch, c. 1955. Contributing
Garage, c. 2000. Non-contributing
Left side of photo 28

3725 Kirkwood Drive. Massed Ranch, c. 1955. Contributing
Right side of photo 28

The one-story has wings at either end (north/south) of the façade and a low-pitched hipped roof covered with asphalt shingles. The section between the wings is covered with Bedford limestone ashlar. The wings and remaining facades are covered with metal siding. The south wing features a north cutaway corner entry with iron railings and trellis panel that supports the roof. The wood entry door is in the back wall of the porch, which is the south end of the middle section of the façade. A pair of 1/1 wood windows is centered in the wall south of the entry. The middle section features a large middle wood sash flanked by 1/1 wood windows roughly centered between the wings. The north wing, which is narrower than the south wing, has a wood garage door with a row of windows near the top.

The home was the residence of Thomas and Maude Blume in the late 1950s and 1960s. The couple appear to have retired by 1960 since no occupation was listed for Thomas Blume in the city directory for that year.²⁵

3733 Kirkwood Drive. American Small House, c. 1950. Contributing
Seen in the right background of photo 28

3737 Kirkwood Drive. Ranch, c. 1950. Non-contributing
The band of windows was replaced on the house.

3745 Kirkwood Drive. Ranch, c. 1950. Contributing

Merivale Street

North side going east

²⁵ Ft. Wayne City Directory, 1960. Pg. 90

Kirkwood Park Historic District

Name of Property

Allen County, IN

County and State

2501 Merivale. American Small House, c. 1950. Contributing

2521 Merivale. Ranch, 1962. Contributing

2523 Merivale. Split-level, c. 1960. Contributing

Garage, c. 1960. Contributing

2603 Merivale. Garrison Colonial Revival, c. 1955. Contributing

Garage, c. 2000. Non-contributing

Left side of photo 31

2609 Merivale. Garrison Colonial Revival, c. 1955. Contributing

Right side of photo 31

The two-story, side-gabled house features a one-story, side-gable wing on its west side and a second story that juts out over the first story on the façade. The house has brick on the first story of the two-story section and clapboards on the second story and remaining walls of the house. The wood windows are 6/6 and the roof is covered with asphalt shingles. A brick chimney is in the south half of the east façade. The front façade features a concrete stoop with iron railings in the west half of the two-story section. The entry door is wood. A three-sided bay with cutaway corners juts out from the east half of the two-story section's first story. It has a window divided into twelve panes in its front wall and narrow 4/4 windows in its side walls. The second story features three 6/6 wood windows. The one-story section on the west end of the house features two 6/6 wood windows and a wood entry door in the east end of its front wall.

The house belonged to Victor V. and Georgia Hickman during the late 1950s and 1960s. Victor Hickman was listed as a life insurance agent for Midwestern United Life Insurance Company in the 1960 city directory.²⁶

2615 Merivale. Half-Courtyard Ranch, 1963. Contributing

2621 Merivale. Massed Ranch, c. 1960. Contributing

2627 Merivale. Ranch, 1976. Non-contributing

This house was built after the period of significance.

Merivale Street

South side going west

²⁶ Ft. Wayne City Directory, 1960. Pg. 448

Kirkwood Park Historic District

Name of Property

Allen County, IN

County and State

2624 Merivale. Linear Ranch, c. 1955. Contributing
Photo 32

Garage, c. 1955. Contributing

The one-story, side-gabled brick Ranch features 8/8 wood windows with stone sills. The gables are covered with metal siding and the roof is covered with asphalt shingles. The façade has two 8/8 windows in its west end. A deeply-recessed, wide entry is west of center on the façade. It has a brick stoop, wood pilasters, and a wood door with window in the top half. The east half of the façade features an 8/8 window in its east end and a three-sided projecting bay slightly east of the entry. The bay has narrow 2/2 wood windows that flank a wood window composed of sixteen panes.

The home was the residence of Floyd B. and Olene Kelsey, Jr. during the late 1950s and 1960s. Floyd Kelsey was listed as a manager for Pine Lands North America in the 1960 city directory.²⁷

2602 Merivale. American Small House, c. 1955. Contributing

2524 Merivale. Ranch, c. 1960. Contributing

Springfield Avenue

South side going west

2704 Springfield. Linear Ranch, c. 1960. Contributing

2632 Springfield. Ranch, c. 1960. Contributing

2626 Springfield. Ranch, c. 1960. Contributing

2620 Springfield. American Small House, c. 1950. Contributing
Garage, c. 1950. Contributing

2612 Springfield. Garrison Colonial Revival, c. 1950. Contributing
Left side of photo 35

2602 Springfield. Cape Cod, c. 1955. Contributing
Right side of photo 35

Garage, c. 1950. Contributing

The one-and-a-half story, side-gabled house features limestone ashlar on the first story of its front façade and clapboards on the remaining walls. The house has 6/1 wood windows and the roof is covered with asphalt shingles. A chimney composed of ashlar is centered in the home's east wall and two dormers with gabled roofs are on the façade. The dormers have 6/1 wood windows and cornice trim at the top of the walls. The façade features a concrete stoop with iron railings and wood entry door centered on the first story. The entry surround is composed of

²⁷ Ft. Wayne City Directory, 1960. Pg. 530

Kirkwood Park Historic District

Allen County, IN

Name of Property

County and State

fluted pilasters that support an entablature. The door has a window in the top. The entry is flanked by 6/1 wood windows with stone sills.

The house belonged to Arnold H. and Lena Tonne during the late 1950s and 1960s. Arnold Tonne was listed as the vice-president of Tonne Dairy Incorporation, a Fort Wayne enterprise, while Arnold H. Tonne (likely senior) was listed as president in the 1960 city directory.²⁸

2550 Springfield. Ranch, c. 1950. Contributing

Right background of photo 35

The home was likely constructed by Ray Tilbury, who is listed as a building contractor living at this residence in the 1950 city directory.²⁹ His wife was Betty Tilbury. They were not living at this location in 1960.

2540 Springfield. Garrison Colonial Revival, c. 1950. Contributing

Left side of photo 36

The two-story house features a side-gabled roof and a garage with side gable that extends from the west side of the house. The house has 1/1 wood windows and the roof is covered with asphalt shingles. The façade features a projecting section in its west half with a deeply-recessed entry in the east end of the projecting section. The entry is flanked on the east by a narrow wall of stone and the door is wood. A pair of short 1/1 wood windows is west of the entry. The second story juts out over the first story in the projecting section. It is supported by three wood corbels and has a pair of 1/1 wood windows centered in the second story. A wide chimney composed of ashlar is east of the entry/projecting section. It forms a wide wall that steps down to the east along the façade. A 1/1 window is in the east end of the façade's first story and a 1/1 wood window is centered in the second story east of the chimney. The garage has a wide, wood garage door.

This was the residence of Charles E. and Anna Castle in the late 1940s and 1950s. Charles Castle was the manager of Electrolux Corporation in Fort Wayne in 1950.³⁰

2532 Springfield. American Small House, c. 1950. Contributing

Garage, c. 1960. Contributing

Second from left side of photo 36

2526 Springfield. Garrison Colonial Revival, c. 1945. Contributing

Garage, c. 1960. Contributing

Second from right side of photo 36

2524 Springfield. Dutch Colonial Revival, c. 1945. Contributing

Right side of photo 36

²⁸ Ft. Wayne City Directory, 1960. Pg. 1012

²⁹ Ft. Wayne City Directory, 1950. Pg. 559

³⁰ Ft. Wayne City Directory, 1950. Pg. 108

Kirkwood Park Historic District

Allen County, IN

Name of Property

County and State

The two-story, side-gabled house has vinyl siding and 6/6 wood windows. The gambrel roof, which features flared front eaves, is covered with asphalt shingles. A brick chimney is centered in the home's east wall and a garage with side gable extends off the west wall. The garage has a wood door with window in the top in its east end and a wide, metal garage door. The façade features a concrete stoop with iron railings centered in the first story. The entry is composed of a wood door and side-lites and a surround with thin pilasters that support a pediment. Three-sided bays with cutaway corners flank the entry and feature large windows divided into multiple panes. The top of the bays is covered by the flared eave of the gambrel roof. The second story of the façade features three dormers with 6/6 wood windows and gabled roofs.

The home belonged to the Robert T. Beck family during the late 1950s and 1960s. Robert Beck was listed as Reverend Robert Beck in the 1960 city directory.

2520 Springfield. Colonial Revival, c. 1945. Contributing

2424 Springfield. Ranch, c. 1950. Contributing
Left side of photo 12

2410 Springfield. Colonial Revival, c. 1950. Contributing
Garage, c. 1990. Non-contributing
Right side of photo 12

2402 Springfield. Ranch, c. 1950. Contributing

2320 Springfield. Ranch, c. 1950. Contributing

2310 Springfield. American Small House, c. 1950. Contributing

2304 Springfield. Ranch, c. 1950. Contributing

2224 Springfield. American Small House, c. 1945. Contributing
Garage, c. 1940. Contributing

2210 Springfield. Colonial Revival, c. 1945. Contributing
Right side of photo 13

The two-story, side-gabled house has aluminum siding and 8/8 and 8/9 wood windows with original wood shutters. The house features cornice returns and the roof is covered by French tiles. The façade is divided into three bays of 8/9 windows on the first story and 8/8 windows on the second story. The deeply-recessed wood entry door, located in the north bay, features a surround with scallop-edged frieze, cornice, and key. A one-and-a-half story side-gabled garage is attached to the north side of the house and also features cornice returns. The first story is dominated by a wide metal garage door. The second story features a wide wall dormer with gabled roof and 8/8 wood window.

Kirkwood Park Historic District

Allen County, IN

Name of Property

County and State

The home belonged to Robert and Martha McKee in 1946. The McKees owned an antique store in Fort Wayne named the Treasure Chest located on State Boulevard.³¹ The home was then owned by the Arthur C. Richard, Jr. family in the 1950s and 1960s.

2206 Springfield. Cape Cod, c. 1945. Contributing
Middle of photo 13

The one-and-a-half story, side-gabled house has clapboards and 8/12 and 6/6 wood windows. The roof features cornice returns and is covered with slates. The symmetrical façade features a wide concrete stoop and entry composed of a wood door and side-lites with surround composed of simple pilasters and entablature. Flanking the entry are 8/12 wood windows. The roof has three dormers with gabled roofs and 6/6 wood windows. A side-gabled garage with a wide wood garage door is set back from the façade on the south end of the house. The garage features a small dormer with gabled roof and small 6/6 wood window.

This home was the residence of M. Melvin and Irene McDevitt during the 1940s and 1950s. Melvin McDevitt was the vice president of the Fort Wayne Builders Supply Company in 1946.³²

2140 Springfield. Garrison Colonial Revival, c. 1945. Contributing
Right side of photo 13

2136 Springfield. Ranch, c. 1950. Non-contributing
This house now has a new porch-portico.

2130 Springfield. House, c. 1950. Contributing

2120 Springfield. American Small House, c. 1940. Contributing
Garage, c. 1990. Non-contributing

2114 Springfield. American Small House, c. 1940. Contributing
Garage, c. 1940. Non-contributing

2110 Springfield. American Small House, c. 1940. Contributing

2102 Springfield. American Small House, c. 1940. Contributing
Garage, c. 1940. Contributing

Springfield Avenue

North side going east

³¹ Ft. Wayne City Directory, 1946. Pg. 377

³² Ft. Wayne City Directory, 1946. Pg. 375

Kirkwood Park Historic District

Name of Property

Allen County, IN

County and State

Brick entry sign, c. 1955. Contributing Object

2201 Springfield. Colonial Revival, c. 1950. Contributing
Left side of photo 15

2207 Springfield. Colonial Revival, c. 1950. Contributing
Second from left side of photo 15

2215 Springfield. Garrison Colonial Revival, c. 1950. Contributing
Second from right side of photo 15

2225 Springfield. Colonial Revival, c. 1950. Contributing
Garage, c. 1960. Contributing
Right side of photo 15

2305 Springfield. Massed Ranch, c. 1950. Contributing
Photo 16

The one-story house is composed of tan-colored Roman brick and features a frieze board at the top of the walls. The house has awning style wood windows with stone sills near the top of the walls. A large, hipped roof covers the entire rectangular plan and is covered with asphalt shingles. A wide chimney rises from the southwest back corner of the house. The façade features a wide, incised porch on its south half. The roof is supported by two pairs of metal trellises. The entry door is centered on the façade, but in the north end of the incised porch's back wall. It has a window in its top. A row of three wide wood windows with awning-style transoms is south of the entry door. A pair of awning windows with stone sill is located on the north corner of the façade.

This home was the residence of Calvin H. and Edith Evers during the 1950s into the 1960s. Calvin, who went by the nickname Bud, owned Bud Evers Auto Company in Fort Wayne. It was a body shop and automobile repair garage.³³

2307 Springfield. Split-level, c. 1955. Contributing
Left side of photo 17
Garage, c. 1950. Contributing

The small split-level home features limestone ashlar on the front façade and vinyl siding in the gables and remaining facades. The house has a two-story front-gabled section on its south half and one-story, side-gabled section on its north half. The two-story section's first story functions like a raised basement while the one-story section is almost at-grade. The front façade of the two-story section has a row of four windows in the first story and two sliding windows in the second story. The front façade of the one-story section features a porch with shed roof on its south half. The porch has walls composed of ashlar capped with stone and wood posts that support the roof. The back wall of the porch projects slightly and features a wood entry door with

³³ Ft. Wayne City Directory, 1950. Pg. 174

Kirkwood Park Historic District

Allen County, IN

Name of Property

County and State

windows in its top half on the north end and a 1/1 wood window in its south end. A wide, wood picture window is in the façade north of the porch.

The house belonged to Saul M. and Miriam Decker during the late 1950s and 1960s. Saul Decker was listed as an engineer at Magnavox Corporation in Fort Wayne in the 1960 city directory.³⁴

2315 Springfield. American Small House, c. 1940. Contributing
Right side of photo 17

2401 Springfield. Garrison Colonial Revival, c. 1940. Contributing

2405 Springfield. Linear Ranch, c. 1950. Contributing

2409 Springfield. Ranch, c. 1950. Contributing

2425 Springfield. Ranch, c. 1950. Contributing
Garage, c. 1950. Contributing

2525 Springfield. American Small House, c. 1945. Contributing

2529 Springfield. Colonial Revival, c. 1945. Contributing

2545 Springfield. American Small House, c. 1955. Contributing. Photo 33

The one-story house has an L-form with a side-gabled garage extension on its west end. The roof is covered with asphalt shingles and features cornice returns. The front wall of the ell is composed of Bedford limestone ashlar while the remaining walls, including the front-gabled section, are covered with vinyl siding. The house has 8/8 wood windows. The front-gabled section, on the west half of the façade, features two 8/8 windows. The front wall of the ell features a concrete stoop and recessed entry in its west end. The wood door has a window in the top. A broad chimney composed of ashlar is centered in the wall east of the entry. It is flanked by wide wood windows composed of a single pane.

The house belonged to Norbert A. and Nora Bruick during the late 1950s and 1960s. In the 1960 city directory, Norbert Bruick was listed as a salesman for the Peter Eckrich Company, makers of sausages and prepared meats.³⁵

2611 Springfield. Ranch, c. 1950. Contributing

2621 Springfield. American Small House, c. 1955. Contributing. Right side of photo 34

³⁴ Ft. Wayne City Directory, 1960. Pg. 229

³⁵ Ft. Wayne City Directory, 1960. Pg. 131

Kirkwood Park Historic District
Name of Property

Allen County, IN
County and State

8. Statement of Significance

Applicable National Register Criteria

(Mark "x" in one or more boxes for the criteria qualifying the property for National Register listing.)

- ☒ A. Property is associated with events that have made a significant contribution to the broad patterns of our history.
- ☐ B. Property is associated with the lives of persons significant in our past.
- ☒ C. Property embodies the distinctive characteristics of a type, period, or method of construction or represents the work of a master, or possesses high artistic values, or represents a significant and distinguishable entity whose components lack individual distinction.
- ☐ D. Property has yielded, or is likely to yield, information important in prehistory or history.

Criteria Considerations

(Mark "x" in all the boxes that apply.)

- ☐ A. Owned by a religious institution or used for religious purposes
- ☐ B. Removed from its original location
- ☐ C. A birthplace or grave
- ☐ D. A cemetery
- ☐ E. A reconstructed building, object, or structure
- ☐ F. A commemorative property
- ☐ G. Less than 50 years old or achieving significance within the past 50 years

Kirkwood Park Historic District
Name of Property

Allen County, IN
County and State

Areas of Significance

(Enter categories from instructions.)

ARCHITECTURE

COMMUNITY PLANNING AND DEVELOPMENT

Period of Significance

1938-1963

Significant Dates

Significant Person (last name, first name)

(Complete only if Criterion B is marked above.)

Cultural Affiliation

Architect/Builder (last name, first name)

Gottschalk, H. K.

Hofer, Adolph K.

Kirkwood Park Historic District

Name of Property

Allen County, IN

County and State

Period of Significance (justification)

The period of significance begins in 1938 when the original plat for Kirkwood Park was developed. The subsequent plat additions B-F occurred between 1940 and 1950, roughly from west-to-east, with build-out of the development occurring by about 1960. Two houses were constructed soon after that date in 1962 and 1963. The next house to follow and complete construction on platted lots did not occur until 1976, so it is considered non-contributing. The year 1963, when the last contributing house was built at 2615 Merivale Street, is used as the conclusion of the period of significance.

Criteria Considerations (explanation, if necessary)

N/A

Statement of Significance Summary Paragraph (Provide a summary paragraph that includes level of significance, applicable criteria, justification for the period of significance, and any applicable criteria considerations.)

The Kirkwood Park Historic District is eligible for the National Register of Historic Places using criterion A under the area of Community Planning & Development. The district is an example of suburban, mostly post-World War II, development in Fort Wayne. The Kirkwood Park development (1938-1950) included semi-circular curving streets (Kirkwood Circle and Kirkland Avenue), as well as the inclusion of a park and entry piers. In layout and housing stock, Kirkwood Park embraces many key FHA standards of its era. The planning and buildout of Kirkwood Park spanned a critical time as Fort Wayne emerged from the Depression, became a major war manufacturing center, and moved into a post-war housing boom.

The district is also eligible using criterion C under Architecture as an area of significance. This is mostly demonstrated by the number of Colonial Revival, Cape Cod, and Ranch style homes in the district. Included with these, though smaller in number, are examples of American Small Houses, and Tudor Revival style homes.

The district also qualifies under the Multiple Property Documentation Form: *Residential Planning and Development in Indiana, 1940-1973*. Although the area was platted in 1938, most of the houses were constructed after World War II until 1963. Over two-thirds of the district was platted from 1940-1950. This establishes the district under the MPDF property type: "World War II Era and Post-War Residential Development" under its subtype: World War II Era Housing Development, c. 1940-1949. The district meets specific registration requirements relating to the time period in which it was developed and it retains a high level of integrity in layout. The largely unmodified housing, of similar features, also adds to the integrity of the district. None have been lost to demolition, giving the district cohesiveness. Some elements of the district reflect the influence of custom or planned developments, such as the relationship to the new beltway road, incorporation of a sizable park, curved streets, and a variety of housing types.

Kirkwood Park Historic District
Name of Property

Allen County, IN
County and State

Narrative Statement of Significance (Provide at least **one** paragraph for each area of significance.)

COMMUNITY PLANNING & DEVELOPMENT

Located two miles northeast of downtown Fort Wayne, Kirkwood Park is a locally significant, late Depression example of post-WWII suburban development connected by early freeway systems of the city. Despite the development's pre-WWII plat, first recorded in 1938 and the subsequent first addition in 1940, few homes were constructed prior to or during the war with only about a dozen appearing in the 1946 city directory. Construction of new housing began in earnest after the war. Kirkwood Park is one of very few developments platted in Fort Wayne during the period between the Great Depression and World War II and therefore holds a unique place in the city's history as an early example of the type of suburban development that would become the ubiquitous norm after WWII.

Kirkwood Park's connectivity to downtown Fort Wayne and the string of commercial and residential suburban development that followed World War II is due to its location on Crescent Avenue. Crescent Avenue, which forms the district's west boundary, became a busy suburban arterial during the district's period of significance. It was designated as both State Road 14 and State Road 37 during that time. Crescent Avenue intersects Coliseum Boulevard (formerly U.S. Highway 30/current State Road 930) which forms the north boundary to Kirkwood Park. Coliseum Boulevard was first developed in the 1950s as a suburban beltway or "circumurban" around the city as Kirkwood Park was nearing completion.

Whether intentionally inspired by Crescent Avenue on the west, a few interior streets form broad, radiating crescents from the park in the west half of the development. These curvilinear streets with planned greenspace, uniform setback and tree plantings follow the general character of many of Fort Wayne's early 20th century developments. The 1938 initial plat was followed closely by adjoining plats labeled Kirkwood Park Sections B in 1940 and C in 1944. This portion of the development included a large grove of trees retained by the developers to become a neighborhood park: Kirkwood Park (photos 23, 27). Plats D, E, and F followed in 1946, 1949, and 1950, respectively. While the later additions followed a more regimented street grid east of the earlier three sections, the development maintained deep front yards and retained many existing trees. The original plat was surveyed by H. K. Gottschalk. Plats B through F were designed and surveyed by A.K. Hofer.

Adolf K. Hofer was a native of Fort Wayne, and worked in the surveying field while also studying to complete his engineering degree from Purdue University. His career spanned more than fifty years beginning in 1913. Hofer designed numerous housing developments in Fort Wayne as a consultant to multiple developers, including Hilgeman and Schaaf, Louis Curdes, John Wilding, Charles Wilding, and others.

Besides Kirkwood Park, Hofer's other major plats now listed on the National Register of Historic Places include Kensington Park, South Kensington Park, Wildwood Park, Harrison Hill,

Kirkwood Park Historic District

Allen County, IN

Name of Property

County and State

Southwood Park, Indian Village, and Indian Hills. Other developments in Fort Wayne planned by Hoffer include Stalf Court, West Lincolnway, Hidden Valleys, Sunnybrook Acres, Somerset Acres, Trixholme, Norwood, Rudisill Heights, Brentwood Park, Cambridge Hills, Lincoln Court, Figel's, France, Stadium Place, Paramount, Norwood Heights, Bellair, Delta Heights, Forest Hill, Hofer's First, North Highlands, Sprunger's, Tower Heights, Washington Heights, Westgate Place, Idlewood, Crestholme, Waldron Place, Sunnyside Gardens, Riverside Terrace, Woodland View, Rolling Green, Fairfax, Grandview Gardens, Cassell Place, Southern Heights, Fairfield Terrace, Woodhurst, Country Club View, Country Club Gardens, Forest Ridge, Timbercrest, Ideal Acres, Bluffton Interurban Gardens, Waynedale Gardens, Liberty Gardens, Lincolnshire, Stellhorn Park, and Home Gardens.

Kirkwood Park was aimed squarely at automobile owners. In plan and general feeling, Kirkwood Park is most similar to Indian Village (first plat, 1925), with its concentric streets and generous lots. Indian Village has more than twice as many historic houses and was clearly more ambitious. Kirkwood Park's first plat was scaled to its era, one of a cautiously expanding post-Depression housing market.

A few of the names of Kirkwood Park's early residents are important to mention because of their connection to building or real estate sales. Melvin McDevitt, who resided at 2206 Springfield Avenue, was the vice president of Fort Wayne Builders Supply Company and was one of those few who lived with his family in the development by the mid-1940s.³⁶ By 1950, Herbert Borkenstein and Ray Tilbury were living in the district at 3770 Kirkwood Drive and 2550 Springfield Avenue, respectively. Borkenstein was the owner of Borkenstein & Son Heating and Plumbing Contractors while Ray Tilbury was listed as a building contractor in the 1950 city directory.³⁷ By 1960, the Frank and Hilda Smitley family were living at 3402 Kirkland Avenue. Frank Smitley was a real estate agent with offices in the Gettle Building on Calhoun Street.³⁸

While somewhat inconclusive, it would seem that Inez (Kirkwood) Jones, and her son, William L., Jr., lived in the development she platted with her husband. In 1940, William and Inez Jones lived on Trier Road just northeast of the development. William L. Jones died in 1949 and by the 1950 census, Inez Kirkwood Jones is listed as living at 3538 or 3838 (the second numeral being unclear to decipher) Glenhurst Avenue. However, these addresses are not recognized as any of the addresses associated with the development today.³⁹ It appears that the development was named for Inez Jones' maiden name, Kirkwood.⁴⁰

³⁶ Ft. Wayne City Directory, 1946. Pg. 375

³⁷ Ft. Wayne City Directory, 1950. Pgs. 74, 559

³⁸ Ft. Wayne City Directory, 1960. Pg. 523

³⁹ Allen County, IN census records for 1940 and 1950, Ft. Wayne City Directory, 1960.

⁴⁰ Marriage certificate for W. L. Jones and Inez Kirkwood, April 8, 1931, Arkansas

Kirkwood Park Historic District

Name of Property

Allen County, IN

County and State

ARCHITECTURE

The Kirkwood Park Historic District was platted as the Great Depression was nearing an end and private home building began anew in suburban developments around cities. Often, architectural styles picked up where they left off at the end of the 1920s before the Depression when home building began again. Most of these were in revival styles, like Colonial Revival or Tudor Revival. World War II interrupted home building in the district until the mid-1940s. At that time, the region was primed for a housing boom brought on by returning veterans of the war and industry's need for labor in Fort Wayne. From the mid-1940s through the 1950s, additional homes were constructed filling out the plat's lots. By this time, the needs of homeowners and their tastes began to change. Smaller-scaled Colonial Revival homes, American Small Houses, split-level homes, and later, Ranch houses, were popular choices in Kirkwood Park.

Just over fifty homes in the district are examples of Colonial Revival architecture. The Colonial Revival style gained popularity after the Bicentennial Exposition in Philadelphia in 1876 where it was heralded as an expression of the American identity. Planners of the World's Columbian Exposition of 1893 in Chicago also called for pavilions that emulated American colonial architecture. The style became increasingly popular in the early 1900's and remained a desired style through the first half of the twentieth century. This early 20th century revival of the style borrowed directly from Colonial America's vernacular buildings in form and ornamentation. Into the Depression and past the war years, the enduring appeal of Colonial architecture continued.

While most of the district's examples of this style are simplified, mid-century designs of the Colonial Revival style, there are a few more elaborate examples. The most impressive example of Colonial Revival architecture is the large two-story home located at 3770 Kirkwood Drive (photo 30). The brick house features a two-story porch with Doric columns and a massive entry surround with broken, swan-neck pediment on the symmetrical façade. The home features chimneys in each of its side gables, cornice returns, and a tall copper cupola centered on the ridge of the roof. More typical examples of the Colonial Revival style in the district are simple two-story boxes with limited features, such as the home at 2609 Merivale Street (photo 31). The second story jetties out over the brick-faced first story and the home features 6/6 windows and cornice returns on its side gables. This "Garrison" subtype (referring to the jettied second floor) includes ten houses in the district.

Well-executed examples of Colonial Revival cottages include two homes on Kirkland Avenue at 3415 and 3513 Kirkland. Both low-massed homes have lower front-gabled projections and cornice returns. The house at 3415 Kirkland has aluminum siding, 6/6 wood windows, a nicely-detailed entry surround, and fan-lite in the front-gabled section (middle of photo 18). The house at 3513 Kirkland features random-course ashlar on the first story and multi-paned windows (photo 19). The district also has one example of Dutch Colonial Revival architecture at 2524 Springfield Avenue (right side of photo 36). The side-gabled, gambrel-roofed home features three-sided projecting bays with cutaway corners flanking the central entry on the façade. The entry features a pediment and side-lites. The gambrel roof features three wide gabled dormers and the eaves flare out over the projecting bays on the first story.

Kirkwood Park Historic District

Name of Property

Allen County, IN

County and State

A subset of the Colonial Revival style is Cape Cod for which a comparatively large number of examples exist in the district. The simplicity of 18th century original Cape Cod houses and their efficient form made them sound models. New Cape Cod houses evoked the colonial past, on a budget. There are nine examples of Cape Cod homes in Kirkwood Park. Most are simple examples, like the house at 2602 Springfield Avenue, which features Bedford stone on its first story, 6/1 windows, a pair of gabled dormers, and a simple, but detailed entry surround with fluted pilasters and entablature (right side of photo 35). A really exceptional example of the Cape Cod style is located at 2206 Springfield Avenue (middle of photo 13). The house has tall first story walls with an impressive, wide recessed entry with side-lite and surround. The typical, side-gabled Cape features cornice returns and three gabled dormers on its front façade. The roof is covered with slates. The attached garage, set back from the façade, also features a gabled dormer.

In the genre of early 20th revival styles is Tudor Revival architecture. The district has three examples with the largest example located at 3812 Kirkwood Drive (left side of photo 29). The brick house features a wide, gable-front section with ell on the south side. The entry features a large projecting bay of stone with gable with a tall stone chimney behind its south corner. The walls of the entry bay and gable-front section taper and the roofs are steeply pitched. A projecting three-sided bay with cutaway corners is centered in the front gable. The smaller examples are one-and-a-half stories with side-gables. The house at 3424 Kirkland Avenue is brick with stone tabs and features multiple gables and a wide stone chimney near its front entry (left side of photo 10). The other house is located at 3423 Kirkwood Drive and is a simple side-gabled box with a projecting brick entry vestibule with a steeply-pitched gable, tapered walls, and full-round arched entry (right side of photo 25). The house is similar to Sears' Maplewood, however, Sears ceased producing kit houses by about 1940. Further research is needed to confirm if it was a kit house.

American Small Houses are composed of small, compact floor plans, typically one-story, with hints at revival style features or massing popular prior to the need to build a robust number of homes quickly and inexpensively. The district has a good number of these as the need for housing was most keen after World War II at the time additional plats were being made to Kirkwood Park. Just over thirty homes in the district would qualify under these house types.

A good example of American Small House architecture is located at 3410 Glenhurst Avenue (left side of photo 01). The one-story house has a compact L form with random-course stone on its walls. The house has an incised corner entry on the south end of its front-gabled section and a breezeway connects the small gable-front garage on its south side. Another good example of the American Small House is located across the street at 3417 Glenhurst (left side of photo 02). The one-and-a-half story, side-gabled house features multiple descending lower front gables and an attached, front-gabled garage. Some American Small Houses have features of revival styles, such as the house at 3617 Kirkwood Drive (right side of photo 26). The one-and-a-half story house has aluminum siding, 6/6 wood windows, cornice returns, and a nicely-detailed breezeway with attached gable-front garage. The house located at 3424 Kirkwood Drive (left side of photo 24) is

Kirkwood Park Historic District

Allen County, IN

Name of Property

County and State

a simple, side-gabled one-and-a-half story box features a center gable with cornice and the entry features a pedimented surround.

Nearly half of the homes in the district could be classified under the Ranch style. The Ranch style was developed from the one-story, basic linear rectangular plan of homes constructed in the West on ranches. The style was popular from the late 1930s into the early 1980s and often features hipped or low-pitched gable roofs. The district has a variety of these, some compact and others more rambling in nature. More contemporary Ranch design followed in the district by 1960 with lower-pitched gables and asymmetrical, L-shaped plans.

Some outstanding examples of Ranch Houses include a massive rectangular box covered with a large hipped roof at 2305 Springfield Avenue (photo 16). The tan-colored, Roman style brick house features a large, incised entry porch supported by pairs of trellis-like metal panels. Massive panes composing windows are in the back wall of the porch and a wide chimney rises from the back of the house. Another excellent example is a one-story house composed of Bedford stone ashlar at 3626 Kirkwood Circle (photo 21). The house is a Courtyard Ranch with low-pitched gabled wings that flank a wide center area dominated by a wide chimney centered on the façade. This Courtyard Ranch form is repeated in the district and includes a simpler example located at 3439 Glenhurst Avenue that features a garage in its south wing (photo 03). A fairly compact version of the Ranch House that includes a breezeway and attached garage is located at 3501 Rolston Street (right side of photo 07). The house has a hipped roof with a slightly projecting section on the north side of the façade that includes the entry covered by a cutout corner. A wide picture window flanked by double-hung windows is south of the entry. A very simple brick example with side-gables is located at 2624 Merivale Street and features a deeply-recessed entry, 8/8 wood windows, and slight cornice returns (photo 32). This house demonstrates the adoption of Colonial Revival features on the Ranch type.

An interesting house type in the district is the split-level form with two stories off of the garage, or some combination of stories off of the entry. There are four examples of this house type in the district. While some have more traditional features, others are examples of the modern movement of residential architecture. The best example of this is the sprawling home located at 3510 Kirkwood Circle (photo 22). The L-shaped house features sandstone ashlar wainscot with a one-story wing with attached garage connected to a two-story (raised basement) section with gabled roof. This section features tapered walls between the stories. Another, smaller, example is located at 3531 Kirkland Avenue (left side of photo 20). The house features a raised entry and living area on the south half and a two-car garage with second story with saltbox style roof on the north half. The first story is trimmed with Bedford stone ashlar and the windows are long, horizontal awning style windows.

There is a preponderance of cut stone, typically in rusticated ashlar form, used for first story walls in the district. While some stone appears to be sandstone, a good deal of the stone is limestone from the Bedford quarries of southern Indiana. This was a popular building material from about the 1930s through the 1960s, during the time Kirkwood Park was developed. Examples of residences that have ashlar as part of their wall composition also span all styles and types of architecture found in the district including Colonial Revival, Tudor Revival, American

Kirkwood Park Historic District

Name of Property

Allen County, IN

County and State

Small House, and probably most noticeably, Ranch houses. On the latter, with the amount of limestone ashlar produced in Indiana and the amount of Ranch home construction during the same period, Bedford stone has become nearly synonymous with Indiana Ranch homes.

Developmental History/Additional historic context information

Kirkwood Park Historic District
Name of Property

Allen County, IN
County and State

9. Major Bibliographical References

Bibliography (Cite the books, articles, and other sources used in preparing this form.)

Allen County, Indiana GIS, accessed February 9, 2023

Marriage certificate between William L. Jones and Inez Kirkwood, April 8, 1931. Crittenden County, Arkansas.

McAlester, Virginia. A Field Guide to American Houses. New York: Alfred A. Knopf, 2006.

Polk's Fort Wayne City Directory Vol. 1939. Detroit: R. L. Polk & Co., 1939

Polk's Fort Wayne City Directory Vol. 1946. Detroit: R. L. Polk & Co., 1946

Polk's Fort Wayne City Directory Vol. 1950. Detroit: R. L. Polk & Co., 1950

Polk's Fort Wayne City Directory Vol. 1960. Detroit: R. L. Polk & Co., 1960

United States Federal Census: Allen County, Indiana: 1940, 1950

Previous documentation on file (NPS):

- ☐ preliminary determination of individual listing (36 CFR 67) has been requested
- ☐ previously listed in the National Register
- ☐ previously determined eligible by the National Register
- ☐ designated a National Historic Landmark
- ☐ recorded by Historic American Buildings Survey # _____
- ☐ recorded by Historic American Engineering Record # _____
- ☐ recorded by Historic American Landscape Survey # _____

Primary location of additional data:

- ☐ State Historic Preservation Office
- ☐ Other State agency
- ☐ Federal agency
- ☐ Local government
- ☐ University
- ☐ Other
- Name of repository: _____

Kirkwood Park Historic District
Name of Property

Allen County, IN
County and State

Historic Resources Survey Number (if assigned): 003-214-22001-115, 20011, 20032-37, 20597, 20656-7, 20672, 20692, 20697, 20700, 20715-34

10. Geographical Data

Acreage of Property Approximately 46.00 acres

Use the UTM system

UTM References

Datum (indicated on USGS map):

☐ NAD 1927 or ☒ NAD 1983

1. Zone: 16	Easting: 658832	Northing: 4552938
2. Zone: 16	Easting: 659214	Northing: 4552787
3. Zone: 16	Easting: 659234	Northing: 4552388
4. Zone: 16	Easting: 658405	Northing: 4552351

Verbal Boundary Description (Describe the boundaries of the property.)

Beginning on the east edge of Crescent Avenue on the southwest property corner of 2102 Springfield Avenue, face northeast and follow the east edge of Crescent Avenue, crossing Springfield Avenue and Kirkwood Drive, to its intersection with Coliseum Boulevard. Turn southeast and follow the south edge of Coliseum Boulevard to a line extended north from the west edge of Glenhurst Avenue, then turn south and follow the line, crossing Merivale Street, to a line extended west from the north property boundary of 3520 Glenhurst Avenue. Turn east and follow the line to the east property line of 3520 Glenhurst Avenue, then turn south and follow the east property lines of 3520 through 3404 Glenhurst Avenue (east side of the street) to the south edge of Springfield Avenue.

On the south side of Springfield Avenue, aligning with the east property line of 2704 Springfield Avenue, continue due south to the south property line of 2704 Springfield Avenue, then turn west and follow the south property lines of 2704 through 2550 Springfield Avenue (south side of the street, crossing Rolston Street) to the east property line of 2540

Kirkwood Park Historic District

Allen County, IN

Name of Property

County and State

Springfield Avenue. Continue west onto the south property line of 2540 Springfield Avenue until the property boundary turns south, then west again on its south property line. Follow the south property lines of 2540 through 2224 Springfield Avenue (south side of the street) in a slight southwesterly direction to the southeast property line of 2210 Springfield Avenue. Turn southwest and follow the southeast property lines of 2210 and 2206 Springfield Avenue to the southwest property line of 2140 Springfield Avenue. Turn northwest and follow the southwest property lines of 2140 through 2102 Springfield Avenue to the east edge of Crescent Avenue, or the point of beginning.

Boundary Justification (Explain why the boundaries were selected.)

The boundaries include the original 1938 plat of Kirkwood Park and its subsequent five additions to the plat between 1940 and 1950. The development is neatly hemmed in by both Crescent Avenue and Coliseum Boulevard on the west and north, the college campus of Brown Mackie College on the east, and St. Joseph Park and newer additions on the south.

11. Form Prepared By

name/title: Kurt West Garner
organization: Kirkwood Park Homeowners Association
street & number: 12954 6th Road
city or town: Plymouth state: IN zip code: 46563
e-mail: kwgarner@kwgarner.com
telephone: 574-780-1423
date: February 17, 2023

Additional Documentation

Submit the following items with the completed form:

- **Maps:** A USGS map or equivalent (7.5 or 15 minute series) indicating the property's location.
- **Sketch map** for historic districts and properties having large acreage or numerous resources. Key all photographs to this map.
- **Additional items:** (Check with the SHPO, TPO, or FPO for any additional items.)
-

Kirkwood Park Historic District

Name of Property

Allen County, IN

County and State

Photographs

Submit clear and descriptive photographs. The size of each image must be 3000x2000 at 300 ppi (pixels per inch) or larger. Key all photographs to the sketch map. Each photograph must be numbered and that number must correspond to the photograph number on the photo log.

For simplicity, the name of the photographer, photo date, etc. may be listed once on the photograph log and doesn't need to be labeled on every photograph.

Photo Log

Name of Property: Kirkwood Park Historic District

City or Vicinity: Fort Wayne

County: Allen State: Indiana

Photographer: Kurt West Garner

Date Photographed: December 21, 2023

Description of Photograph(s) and number, include description of view indicating direction of camera: Looking southeast at 3410 Glenhurst Avenue

1 of 36.

Description of Photograph(s) and number, include description of view indicating direction of camera: Looking west at 3425 and 3433 Glenhurst Avenue

2 of 36.

Description of Photograph(s) and number, include description of view indicating direction of camera: Looking northwest at 3439 Glenhurst Avenue

3 of 36.

Description of Photograph(s) and number, include description of view indicating direction of camera: Looking southwest on Glenhurst Avenue from south of Merivale Street

4 of 36.

Description of Photograph(s) and number, include description of view indicating direction of camera: Looking southeast about mid-block on Rolston Street

5 of 36.

Kirkwood Park Historic District

Allen County, IN

Name of Property

County and State

Description of Photograph(s) and number, include description of view indicating direction of camera: Looking west at 3411 and 3415 Rolston Street

6 of 36.

Description of Photograph(s) and number, include description of view indicating direction of camera: Looking northwest about mid-block on Rolston Street

7 of 36.

Description of Photograph(s) and number, include description of view indicating direction of camera: Looking southeast on Kirkland Avenue from Merivale Street

8 of 36.

Description of Photograph(s) and number, include description of view indicating direction of camera: Looking north about mid-block on Kirkland Avenue

9 of 36.

Description of Photograph(s) and number, include description of view indicating direction of camera: Looking southeast at 3424 Kirkland Avenue

10 of 36.

Description of Photograph(s) and number, include description of view indicating direction of camera: Looking northeast on Kirkland Avenue from Springfield Avenue

11 of 36.

Description of Photograph(s) and number, include description of view indicating direction of camera: Looking southeast on Springfield Ave. from its intersection with Kirkland Ave.

12 of 36.

Description of Photograph(s) and number, include description of view indicating direction of camera: Looking southwest at the off-shoot drive on the south side of Springfield Ave.

13 of 36.

Description of Photograph(s) and number, include description of view indicating direction of camera: Looking west on Springfield Ave. past the off-shoot drive from Springfield

14 of 36.

Kirkwood Park Historic District

Allen County, IN

Name of Property

County and State

Description of Photograph(s) and number, include description of view indicating direction of camera: Looking northeast on Springfield Ave. east of Kirkwood Drive

15 of 36.

Description of Photograph(s) and number, include description of view indicating direction of camera: Looking northwest at 2305 Springfield Avenue

16 of 36.

Description of Photograph(s) and number, include description of view indicating direction of camera: Looking northwest at 2307 and 2315 Springfield Avenue

17 of 36.

Description of Photograph(s) and number, include description of view indicating direction of camera: Looking north on Springfield Ave. near its intersection with Kirkland Ave.

18 of 36.

Description of Photograph(s) and number, include description of view indicating direction of camera: Looking west at 3513 Kirkland Avenue

19 of 36.

Description of Photograph(s) and number, include description of view indicating direction of camera: Looking northwest at 3531 Kirkland Avenue

20 of 36.

Description of Photograph(s) and number, include description of view indicating direction of camera: Looking northeast at 3626 Kirkwood Circle

21 of 36.

Description of Photograph(s) and number, include description of view indicating direction of camera: Looking south at 3510 Kirkland Circle

22 of 36.

Description of Photograph(s) and number, include description of view indicating direction of camera: Looking northeast on Kirkland Circle and Kirkwood Park

23 of 36.

Kirkwood Park Historic District

Allen County, IN

Name of Property

County and State

Description of Photograph(s) and number, include description of view indicating direction of camera: Looking south at 3424 Kirkwood Drive

24 of 36.

Description of Photograph(s) and number, include description of view indicating direction of camera: Looking southwest on Kirkwood Drive, south of Kirkwood Park

25 of 36.

Description of Photograph(s) and number, include description of view indicating direction of camera: Looking north about mid-block on Kirkwood Drive, opposite Kirkwood Park

26 of 36.

Description of Photograph(s) and number, include description of view indicating direction of camera: Looking southeast across Kirkwood Park from Kirkwood Drive

27 of 36.

Description of Photograph(s) and number, include description of view indicating direction of camera: Looking north on Kirkwood Drive near its intersection with Merivale Street

28 of 36.

Description of Photograph(s) and number, include description of view indicating direction of camera: Looking south into Kirkwood Park on Kirkwood Drive's north entry

29 of 36.

Description of Photograph(s) and number, include description of view indicating direction of camera: Looking southeast at 3770 Kirkwood Drive

30 of 36.

Description of Photograph(s) and number, include description of view indicating direction of camera: Looking northwest about mid-block on Merivale Street

31 of 36.

Description of Photograph(s) and number, include description of view indicating direction of camera: Looking southeast at 2624 Merivale Street

32 of 36.

Kirkwood Park Historic District

Allen County, IN

Name of Property

County and State

Description of Photograph(s) and number, include description of view indicating direction of camera: Looking northwest from the intersection of Springfield Ave. with Rolston Street

33 of 36.

Description of Photograph(s) and number, include description of view indicating direction of camera: Looking west on Springfield Avenue from the east end of the district

34 of 36.

Description of Photograph(s) and number, include description of view indicating direction of camera: Looking southwest on Springfield Avenue just east of Rolston Street

35 of 36.

Description of Photograph(s) and number, include description of view indicating direction of camera: Looking southwest on Springfield Avenue between Rolston and Kirkland Ave.

36 of 36.

Paperwork Reduction Act Statement: This information is being collected for applications to the National Register of Historic Places to nominate properties for listing or determine eligibility for listing, to list properties, and to amend existing listings. Response to this request is required to obtain a benefit in accordance with the National Historic Preservation Act, as amended (16 U.S.C.460 et seq.).

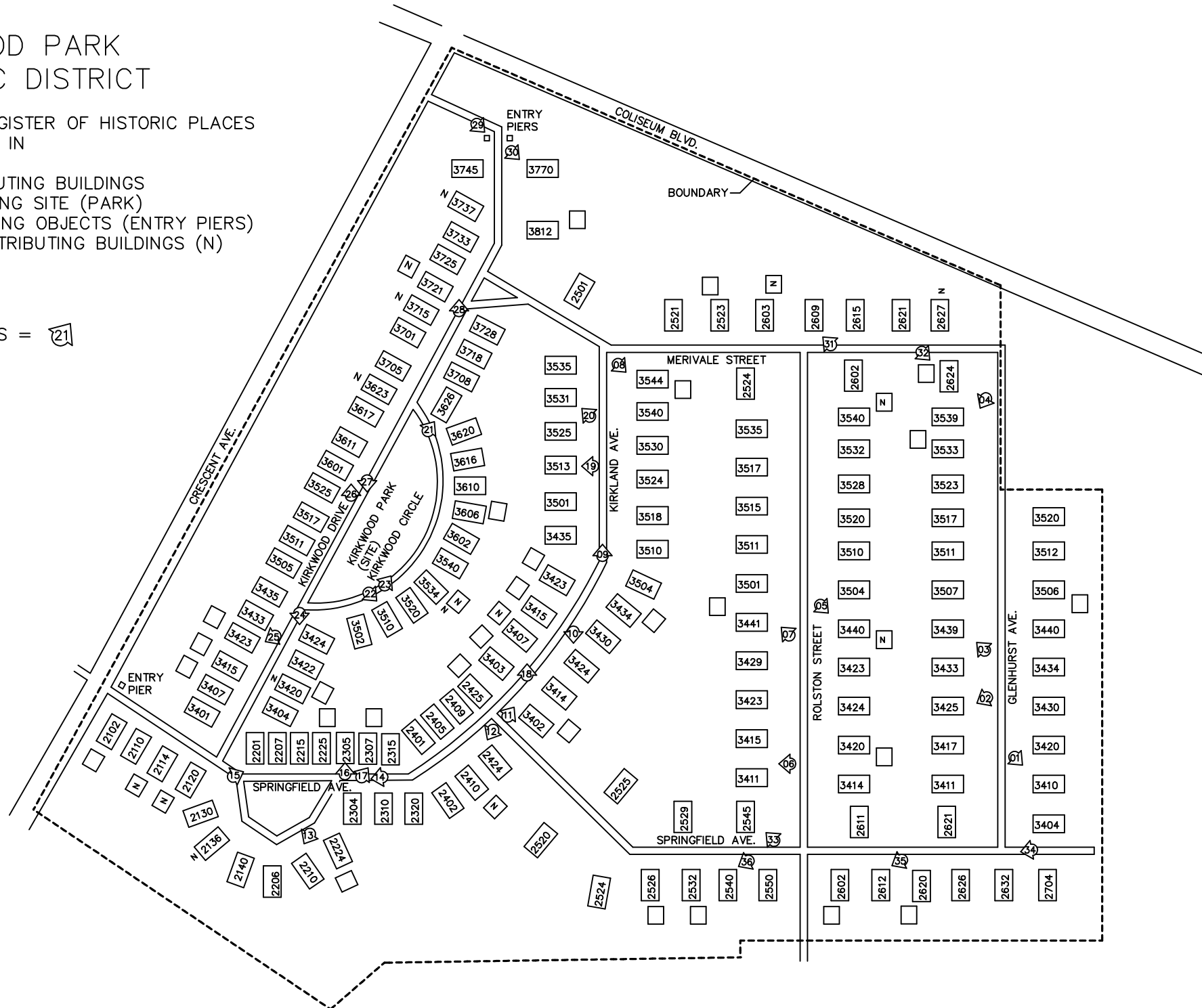
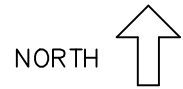
Estimated Burden Statement: Public reporting burden for this form is estimated to average 100 hours per response including time for reviewing instructions, gathering and maintaining data, and completing and reviewing the form. Direct comments regarding this burden estimate or any aspect of this form to the Office of Planning and Performance Management, U.S. Dept. of the Interior, 1849 C. Street, NW, Washington, DC.

KIRKWOOD PARK HISTORIC DISTRICT

NATIONAL REGISTER OF HISTORIC PLACES
FORT WAYNE, IN

180 CONTRIBUTING BUILDINGS
1 CONTRIBUTING SITE (PARK)
3 CONTRIBUTING OBJECTS (ENTRY PIERS)
16 NON-CONTRIBUTING BUILDINGS (N)

PHOTOGRAPHS = 



NAD 83 UTM

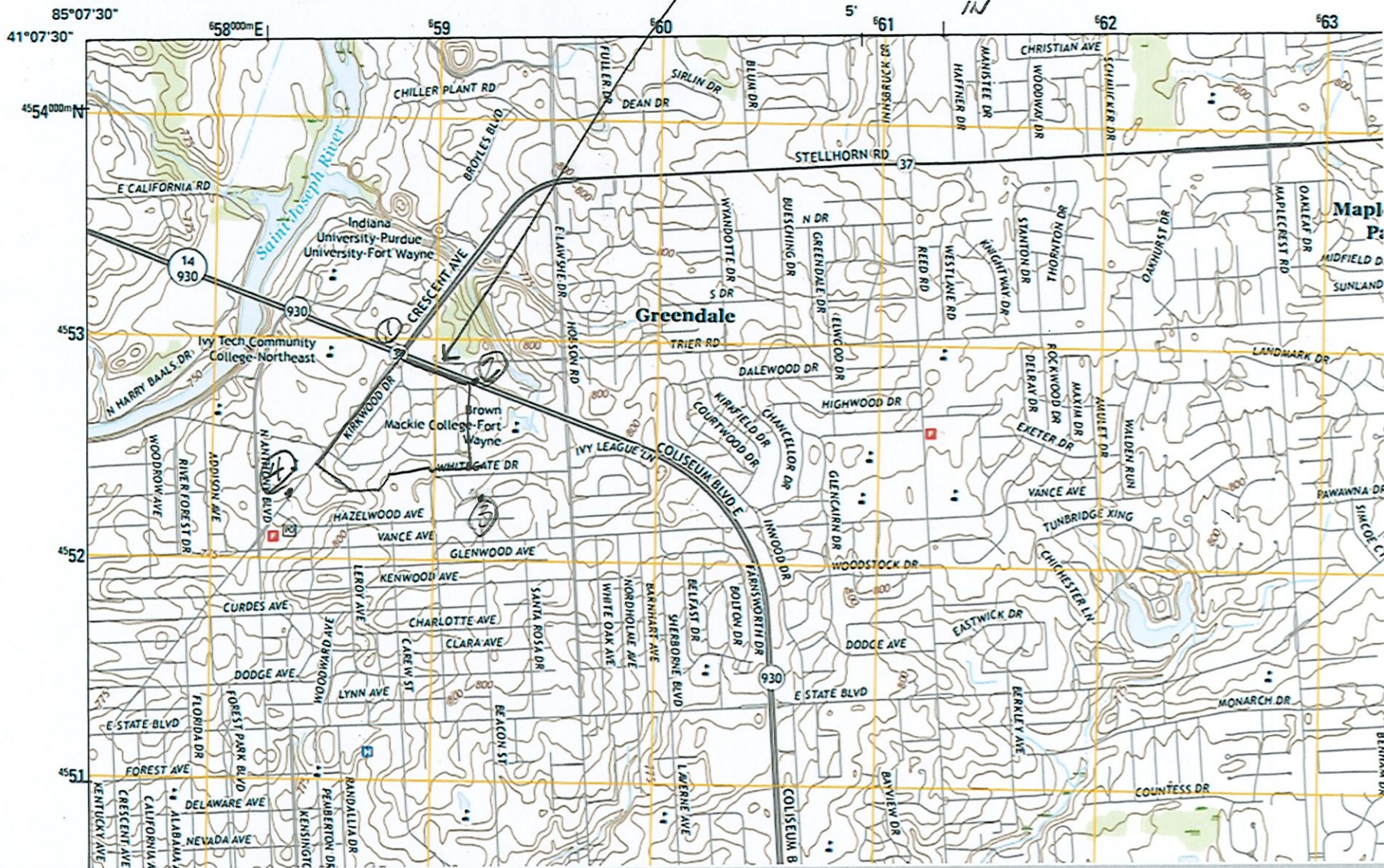
① 16 658832 4552938 ② 16 659214 4552787

③ 16 659234 4552388 ④ 16 658405 4552351

Kirkwood Park Historic District
National Register of Historic Places
Ft. Wayne - Allen Co. IN



U.S. DEPARTMENT OF THE INTERIOR
U.S. GEOLOGICAL SURVEY





IN_AllenCounty_KirkwoodParkHistoricDistrict_0002



IN_AllenCounty_KirkwoodParkHistoricDistrict_0007



IN_AllenCounty_KirkwoodParkHistoricDistrict_0008



IN_AllenCounty_KirkwoodParkHistoricDistrict_0010



IN_AllenCounty_KirkwoodParkHistoricDistrict_0013



IN_AllenCounty_KirkwoodParkHistoricDistrict_0016



IN_AllenCounty_KirkwoodParkHistoricDistrict_0019



IN_AllenCounty_KirkwoodParkHistoricDistrict_0022



IN_AllenCounty_KirkwoodParkHistoricDistrict_0023



IN_AllenCounty_KirkwoodParkHistoricDistrict_0025



IN_AllenCounty_KirkwoodParkHistoricDistrict_0026



IN_AllenCounty_KirkwoodParkHistoricDistrict_0027



IN_AllenCounty_KirkwoodParkHistoricDistrict_0029