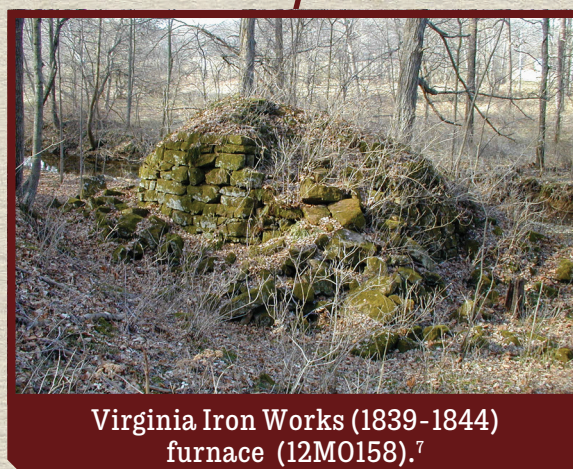
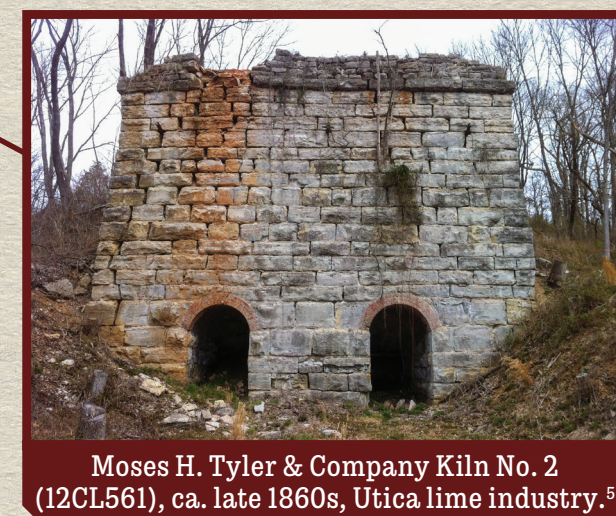
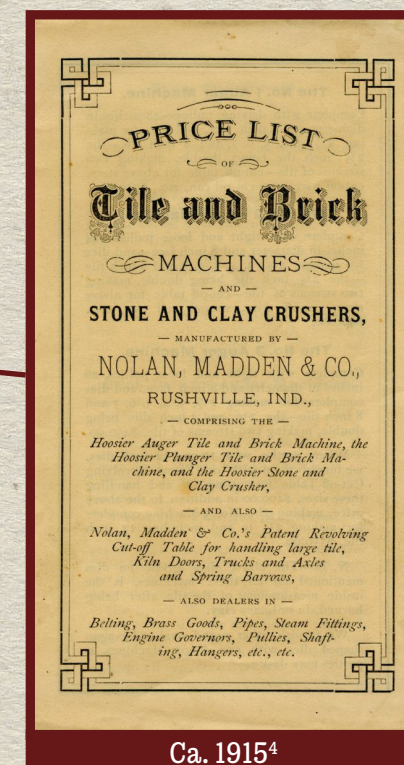
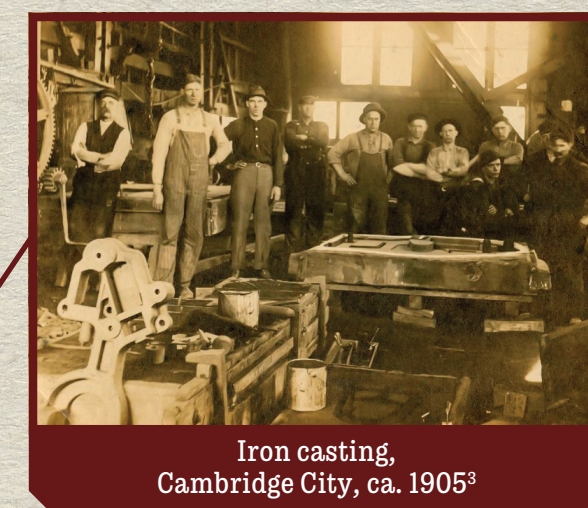
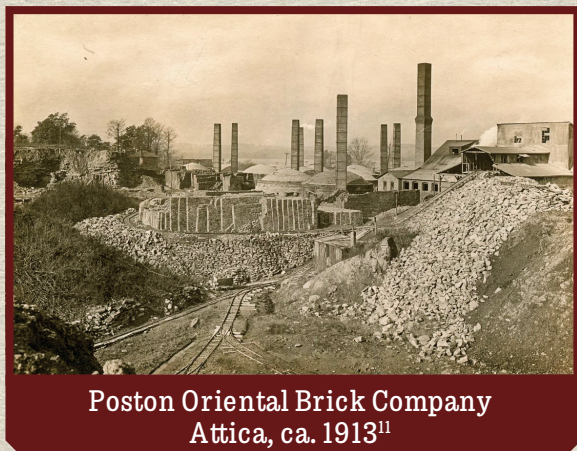
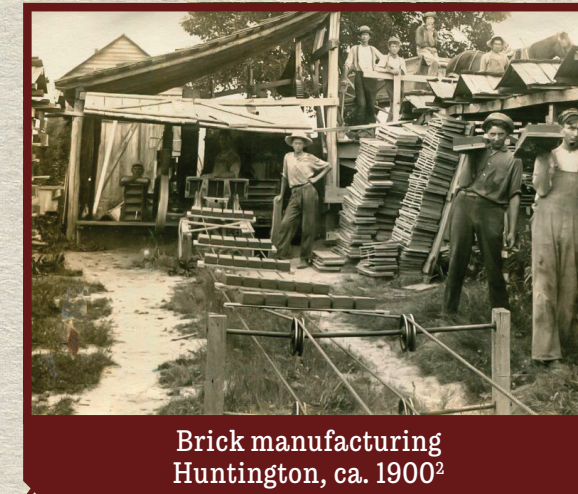


# ARCHAEOLOGY OF Early Indiana Industry

**A Thousand Men**  
 Are Working Night and Day At Our Plant-Extensions At Indiana Harbor

**INLAND STEEL COMPANY**  
 West National Steel Bldg., Chicago

Inland Steel Company advertisement, ca. 1916<sup>12</sup>



For event information and more from the Division of Historic Preservation and Archaeology, visit:  
[on.IN.gov/dhpa](http://on.IN.gov/dhpa) • [facebook.com/INdhpa](https://facebook.com/INdhpa)



(1) Stantec; (2) The Indiana Album, Judy (Wygant) Wibel Collection; (3) The Indiana Album, Hillary Burbrink Collection; (4) The Indiana Album, Sara O'Brien Collection; (5) Wade Tharp, IDNR, Division of Historic Preservation and Archaeology; (6) AJ Ariens, IDNR, Division of Forestry; (7) Cheryl Ann Munson, Department of Anthropology, Indiana University; (8)(9) Michael Strezewski, University of Southern Indiana; (10) From the collection of the Indiana State Museum and Historic Sites; (11) The Indiana Album; (12) From American Artisan and Hardware Record 72(6):67, August 5, 1916, Daniel Stern, Chicago, IL; (Map) The Indiana Album, Robert B. Beckert Collection.

This project has been funded in part by a grant from the U.S. Department of the Interior, National Park Service's Historic Preservation and Archaeology. The project received federal financial assistance for the identification, protection, and/or rehabilitation of historic properties and cultural resources in the State of Indiana. However, the contents and opinions contained in this publication do not necessarily reflect the views or policies of the U.S. Department of the Interior, nor does the mention of trade names or commercial products constitute endorsement or recommendation by the U.S. Department of the Interior. Under Title VI of the Civil Rights Act of 1964 and Section 504 of the Rehabilitation Act of 1973, and the Age Discrimination Act of 1975, as amended, the U.S. Department of the Interior prohibits discrimination on the basis of national origin, disability, or age in its federally assisted programs. If you believe that you have been discriminated against in any program, activity, or facility as described above, or if you desire further information, please write to: Office of Equal Opportunity, National Park Service, 1849 C Street, NW, MS-2740, Washington, D.C. 20240.