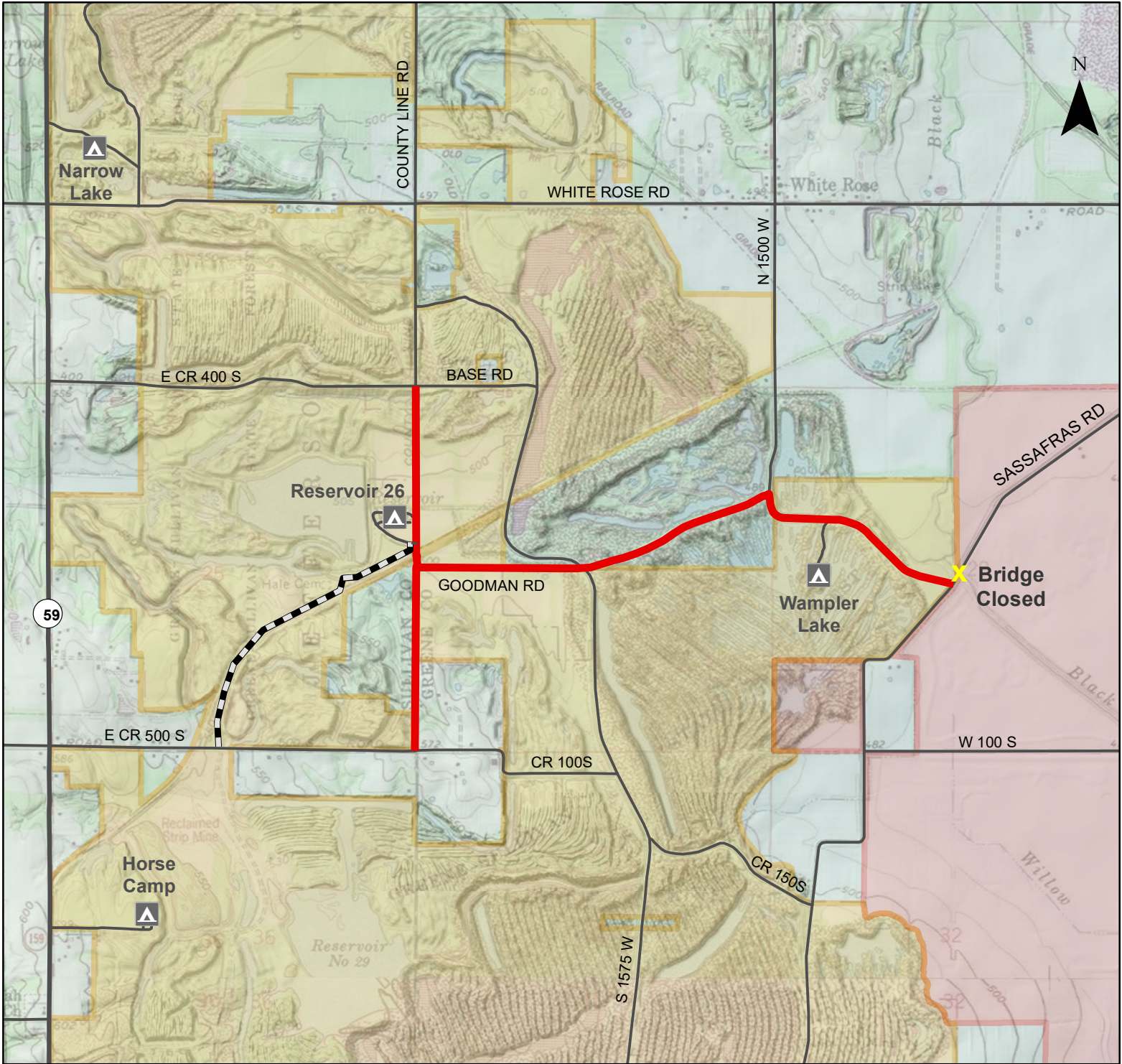





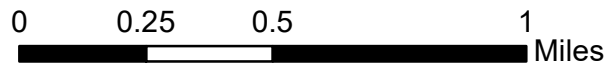


Greene-Sullivan State Forest Road Closure Effective on or shortly after October 1, 2021



Legend:

-  Campground
-  Campground Access
-  Temporary Road Closure
-  Greene-Sullivan State Forest
-  Goose Pond Fish & Wildlife Area



The red highlighted sections of road will be closed on or shortly after October 1, 2021 for improvements. The Reservoir 26 campground will be accessible from CR 500 S. The Wampler Lake campground will be closed.