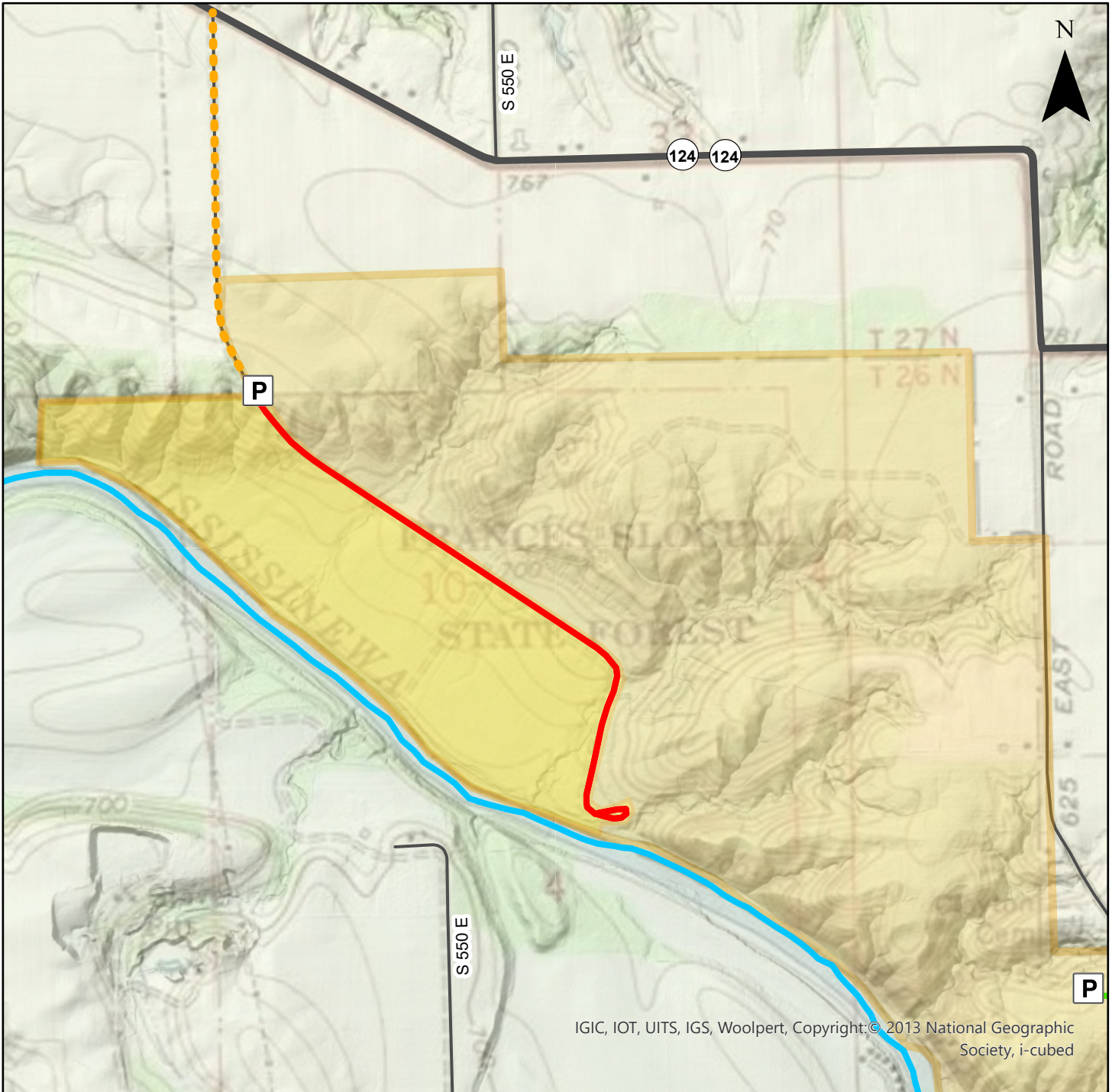
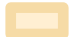
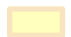






Frances Slocum State Forest Temporary Trail Closure



IGIC, IOT, UITS, IGS, Woolpert, Copyright:© 2013 National Geographic Society, i-cubed

Legend

-  Frances Slocum State Forest
-  Restricted Area
-  Temporary Trail Closure
-  CR 510 - Use Caution
-  Mississinewa River
-  Parking Area

0 0.125 0.25 0.5 Miles

Beginning on or shortly after February 20, 2024, portions of Frances Slocum State Forest fire lane and horse trail will be temporarily closed for public safety. Following management activities both will reopen.