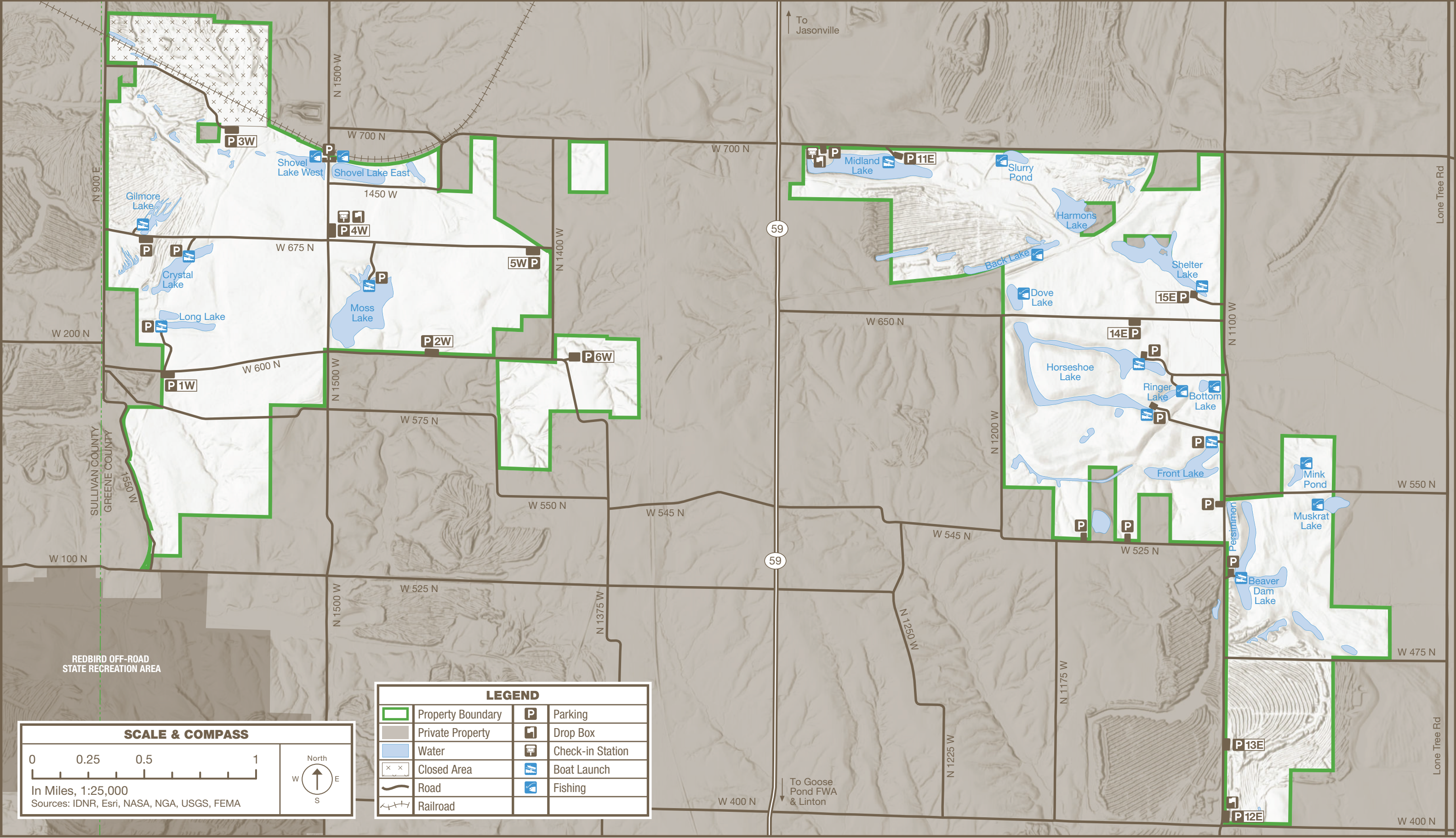


HILLENBRAND FISH & WILDLIFE AREA

Managed by Goose Pond FWA | WEST: 660 N & 1500 W, EAST: 700 N & S.R. 59 | Jasonville, IN 47348 | 812-512-9185
3,631 Acres | Established 1995



OUR STORY

Hillenbrand Fish & Wildlife Area is dedicated to providing quality hunting and fishing opportunities while maintaining 3,631 acres of upland game and wetland habitat, lakes and shallow impoundments. It is located east and west of S.R. 59 approximately 5 miles north of Linton.

Hillenbrand FWA was purchased by the state in 1995. Wildlife management efforts began immediately on the mostly reclaimed surface mine land in Greene County. Hillenbrand is 60 percent grasslands with 125 acres of wetland habitat. The property is named after Indiana businessman John A. Hillenbrand II for his dedication to Indiana’s natural resources.

HELPFUL LINKS

Stay up to date on hunting and fishing information.

HUNTING

WHERE: on.IN.gov/where2hunt
LEARN: on.IN.gov/learn2hunt
GUIDE: on.IN.gov/huntingguide

FISHING

WHERE: on.IN.gov/where2fish
LEARN: on.IN.gov/learn2fish
GUIDE: on.IN.gov/fishingguide

LICENSES

PURCHASE: on.IN.gov/inhuntfish

RECREATION

LOCATIONS: on.IN.gov/recfinder

ACTIVITIES & FACILITIES

- Look for these icons on the map.
- BOATING:** Boats, canoes, kayaks and other small watercraft are allowed. All watercraft limited to 12-volt electric motor. PFD required.
- BOAT LAUNCH:** Gilmour, Crystal, Long, Moss, Midland, Beaver Dam and Front lakes have gravel boat ramps.
- FISHING:** Bass, bluegill, redear, crappie and catfish are common. All state rules and regulations apply. A state fishing license is required.
 - No check-in is required
 - Check for closures during waterfowl hunting season.
 - There is a 14-inch minimum size limit on largemouth bass. All other size and bag limits apply.
- GATHERING:** Berries, mushrooms and nuts may be gathered. Call for details.
- HUNTING:** Deer, rabbit, dove, quail and woodcock are common. Limited hunting for wild turkey and waterfowl is available.
 - Check-in is required.
 - Small game, deer and waterfowl hunters can pick up daily permits at a self-service check-in area (see map).
 - Turkey hunters must check-in at Goose Pond FWA.
 - Pre-registration is required for wild turkey. Call Goose Pond FWA for drawing times and location.
 - Accessible hunting areas are available. Ask for details at Goose Pond FWA headquarters.
- TRAPPING:** Trapping is available. Ask for details. Wetland trapping is available by drawing only. Ask for details at Goose Pond FWA headquarters.
- WILDLIFE WATCHING:** Enjoy watching deer, wild turkey and various bird species. Large congregations of migratory waterfowl can be seen in the wetland areas.

RULES & REGULATIONS

In addition to state fish and wildlife laws, this property is governed by posted regulations affecting the public use of lands and facilities owned, leased or licensed by the DNR.

POSTED AREAS: Safety zones and other restricted areas are marked with appropriate signs. PLEASE READ AND OBEY ALL SIGNS.

VIOLATIONS: Violation of any law, rule or regulation governing this property may cause forfeiture of hunting, fishing or visiting privileges.

RESPONSIBILITY: The DNR Division of Fish & Wildlife will not be held responsible for any accidents or deaths occurring from use of these facilities.

TRAFFIC: Traffic on public roads through the area is governed by state and county laws. All other roads are limited to foot traffic only.

PARKING: Park along county roads (off of the county right of way), within 50 feet of the road. Keep access roads, farmland or access to farmland clear.

COLLECTION PERMIT: Collection permits are required from the property manager or DNR to collect anything except nuts, berries, and mushrooms.

CHECK-IN STATION

- You must self check-in for the following activities:
 - Boating or canoeing
 - Gathering
 - Wildlife watching
 - Hunting (must have hunting license)
 - Night hunting (by permit only)

ONE-DAY ACCESS PERMIT

- Hunters must obtain a one-day access permit before entering the field. The one-day access permit should be kept with you while visiting then recorded through established self-service procedures outlined at the check station. The one-day permit card must be completed and returned to a check-in station or drop box. Your information helps us identify ways to improve Indiana’s FWAs. We appreciate you taking the extra time to fill out the permit. Your feedback and comments are valuable to us.

NOT PERMITTED: Camping, swimming and fires are prohibited. No removal of plants, animals, rocks or fossils.

INDIANA FISH & WILDLIFE AREAS

1. Atterbury

2. Blue Grass

3. Busseron Creek

4. Chinook

5. Crosley

6. Deer Creek

7. Fairbanks Landing

8. Glendale

9. Goose Pond

10. Hillenbrand

11. Hovey Lake

12. Jasper-Pulaski

13. Kankakee

14. Kingsbury

15. LaSalle

16. Pigeon River

17. J.E. Roush Lake

18. Splinter Ridge

19. Sugar Ridge

20. Tri-County

21. Wabashiki

22. Wilbur Wright

23. Willow Slough

24. Winamac

DNR PROPERTIES NEARBY

- Find more DNR properties at on.IN.gov/recfinder.

SHAKAMAK STATE PARK

hiking, wildlife watching, interpretive services, nature center, playgrounds, historic features, fishing, ice fishing, shelter houses, swimming, boat launch, boat rentals, camping, rental cabins

REDBIRD OFF-ROAD STATE RECREATION AREA

mountain biking, hiking, off-road trails, wildlife watching, historic features, fishing, shelter houses, boat launch

CARRY IN

CARRY OUT

Please carry out all trash you produce to help keep the property clean and beautiful for all to enjoy!

WILDLIFE & SPORT FISH RESTORATION

Your purchase of hunting and fishing equipment and motorboat fuels supports Wildlife & Sport Fish Restoration and boating access facilities.

FOR MORE INFORMATION

WRITE: Indiana DNR Division of Fish & Wildlife
402 W. Washington Street, W273
Indianapolis, IN 46204

CALL: 317-232-4200

ONLINE: on.IN.gov/DNR

PROPERTY MANAGEMENT:

Goose Pond FWA
13540 W 400 S
Linton, IN 47441

Call Goose Pond FWA for more details:
812-512-9185

FOLLOW US

f

o

x

in

▶

OUTDOOR INDIANA

Subscribe to Outdoor Indiana magazine today, Visit **OutdoorIndiana.org** or call 317-233-3046.

DNR

Indiana Department of Natural Resources

HILLENBRAND

FISH & WILDLIFE AREA

Hillenbrand FWA

Managed by Goose Pond FWA

WEST: 660 N & 150 W

EAST: 700 N & S.R. 59

Jasonville, IN 46135

(812) 512-9185

on.IN.gov/hillenbrandFWA

GoosePondfwa@dnr.IN.gov

on.IN.gov/wildlife

FUNDING FOR FISH & WILDLIFE

The DNR Division of Fish & Wildlife sells hunting, fishing, and trapping licenses. All revenue is used for managing fish and wildlife resources in Indiana. No license money goes into the state general fund.

The Division also receives money from the federal Sport Fish and Wildlife Restoration programs (sometimes referred to as Dingell-Johnson and Pittman-Robertson funds). The funds are derived from excise taxes levied on sporting arms and ammunition, bows and arrows, fishing equipment and motor boat fuel. The funds are then returned to state fish and wildlife agencies using a formula that in part is based on the number of fishing and hunting license buyers.

The programs, services, facilities, and activities of the Indiana Department of Natural Resources are available to everyone. DNR prohibits discrimination on the basis of race, color, national origin, age, sex, or disability. If you believe that you have been discriminated against in any program, activity, or facility as described above, or if you desire further information please write to: Department of Natural Resources, Executive Office, 402 W. Washington Street, W256, Indianapolis, IN 46204, (317) 232-4020. © 09/2025 Indiana Department of Natural Resources