

## 2025 Deer Firearms Hunt Draw Information

### Bloomfield Barrens Nature Preserve

This page includes information and instructions for those interested in or selected to participate in a reserved draw hunt opportunity. It is important to note that areas participating in reserved hunts are managed by various agencies and may have unique restrictions that each hunter must follow. Please read each area's information packet carefully before pursuing a hunt.

#### Applying:

You must obtain a valid deer firearms license or a deer license bundle prior to applying. There are no age restrictions on applying. Youth hunters may apply if they are properly licensed to hunt deer.

#### Restrictions:

##### Allowed Equipment:

Equipment	Specifications
Rifle	<b>Bullet diameter:</b> .219 of an inch (5.56 mm) or larger A hunter may not possess more than 10 such cartridges for each of these rifles while hunting deer.
Handgun	<b>Barrel length:</b> 4" minimum <b>Bullet diameter:</b> .243" minimum <b>Cartridge length:</b> 1.16" minimum, except for 10 mm <ul style="list-style-type: none"> <li>10 mm also legal cartridges</li> <li>Rifles with barrel less than 18" are NOT considered handguns</li> <li>.25 – 20 Winchester, .32 – 20 Winchester, .30 carbine, and .38 special ammunition are prohibited.</li> </ul>
Shotgun	<b>Bore:</b> 10, 12, 16, 20, or 28 gauge, or .410 <ul style="list-style-type: none"> <li>Shooting slugs and sabot bullets only</li> <li>Combination rifle-shotguns are allowed</li> </ul>
Muzzleloading Rifle/Shotgun	<b>Barrel caliber:</b> .40" minimum <b>Bullet diameter:</b> .357" minimum <ul style="list-style-type: none"> <li>Powder and bullet loaded from muzzle and single bullet</li> <li>Saboted bullets permitted</li> <li>Multiple barreled guns permitted</li> </ul>
Muzzleloading Handgun	<b>Barrel length:</b> 12" minimum, measured from the base of the breech plug (excluding tangs and other projections to the end of the barrel, including the muzzle crown) <b>Barrel caliber:</b> .50" minimum <b>Bullet diameter:</b> .44" minimum <ul style="list-style-type: none"> <li>Loaded from muzzle and single shot</li> </ul>
Airguns	Using non-ignited compressed air or other gas charged by external high compression power source <b>Projectiles:</b> Must shoot .40 caliber or larger single bullet generating 400 ft. lbs. of muzzle energy; or an arrow or bolt with sharpened metal or metal-edged broadhead at minimum 300 fps at release

**Bag Limit:**

- Deer harvested at this hunt count toward your statewide bag limit and the county bag limit of the hunted property.

**Hunting Hours:**

- Legal hunting hours for all deer seasons are from one-half hour before sunrise to one-half hour after sunset.

**Hunt Period:**

- The hunt period at Bloomfield Barrens Nature Preserve is the 2025 deer firearms season, which starts November 15, 2025, and continues through November 30, 2025.

**Hunt Information:**

Ten (10) hunters will be drawn for this opportunity. Successfully drawn hunters will receive a hunt information packet with access permits included. If drawn, hunters may select one hunting partner who is allowed to hunt.

Tree stands must display your name, address, and telephone number legibly written and able to be read from ground level. Tree stands or any equipment associated with tree stands may not penetrate the bark of a tree more than ½ inch. Stands can be installed starting November 1, 2025, and must be removed by December 7, 2025.

**Area Information:**

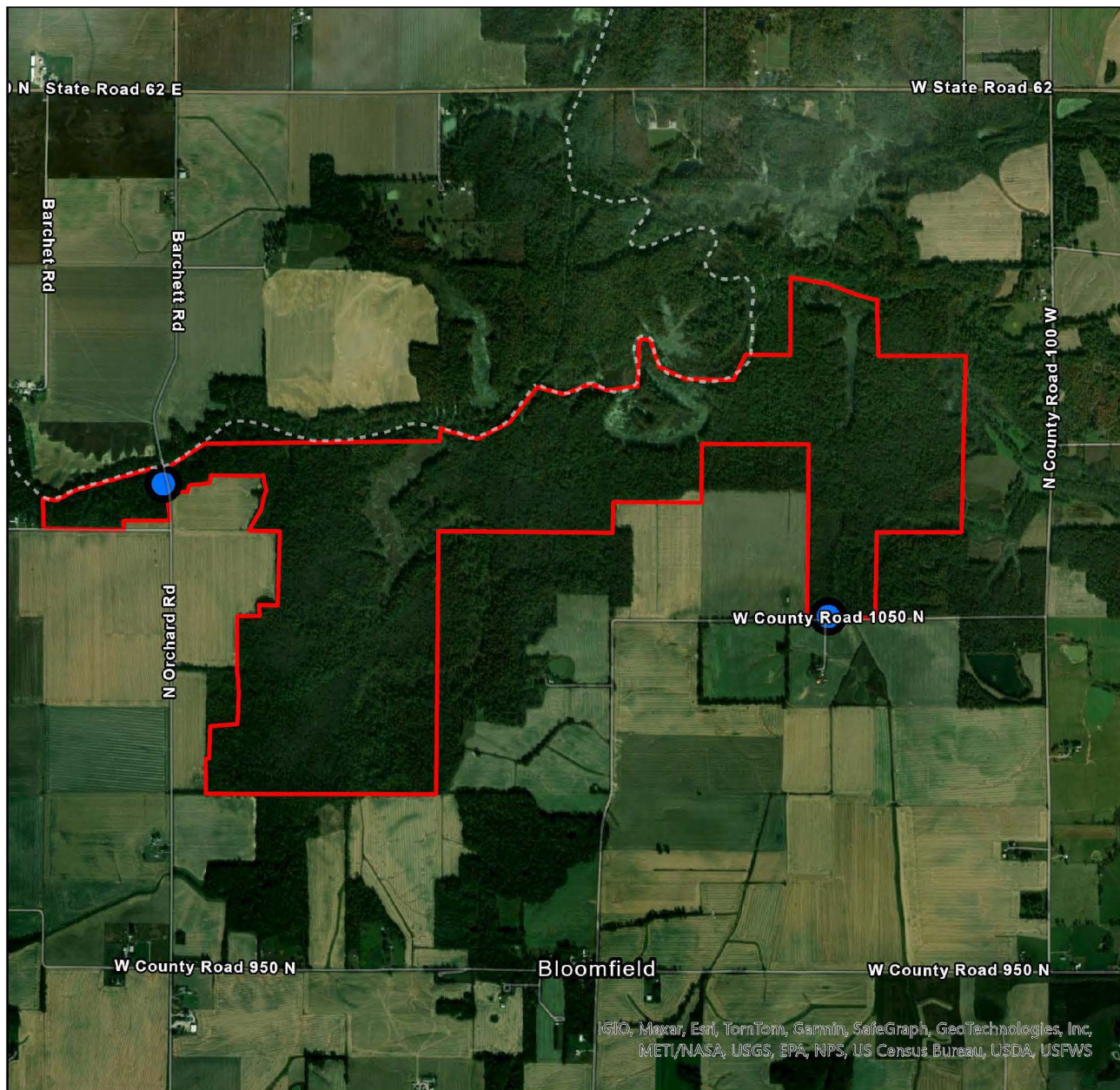
Bloomfield Barrens Nature Preserve is a 740-acre property composed of upland forest, floodplain forest, and wetland areas. It is located approx. 2.5 miles south of Tennyson, Indiana.

The area available for deer hunting is depicted on the attached map. All regulations of the firearms season will apply.

The property will draw ten (10) hunters to hunt for this period. There is no standby drawing at Bloomfield Barrens Nature Preserve.

**Contact:** If you have further questions, please contact ecologist Ryan Keller at 812-789-5048 or [rkeller@dnr.IN.gov](mailto:rkeller@dnr.IN.gov) .

# Bloomfield Barrens Nature Preserve



## Legend



Bloomfield Barrens NP -  
Parking Lots



Bloomfield Barrens NP -  
Boundary

N

