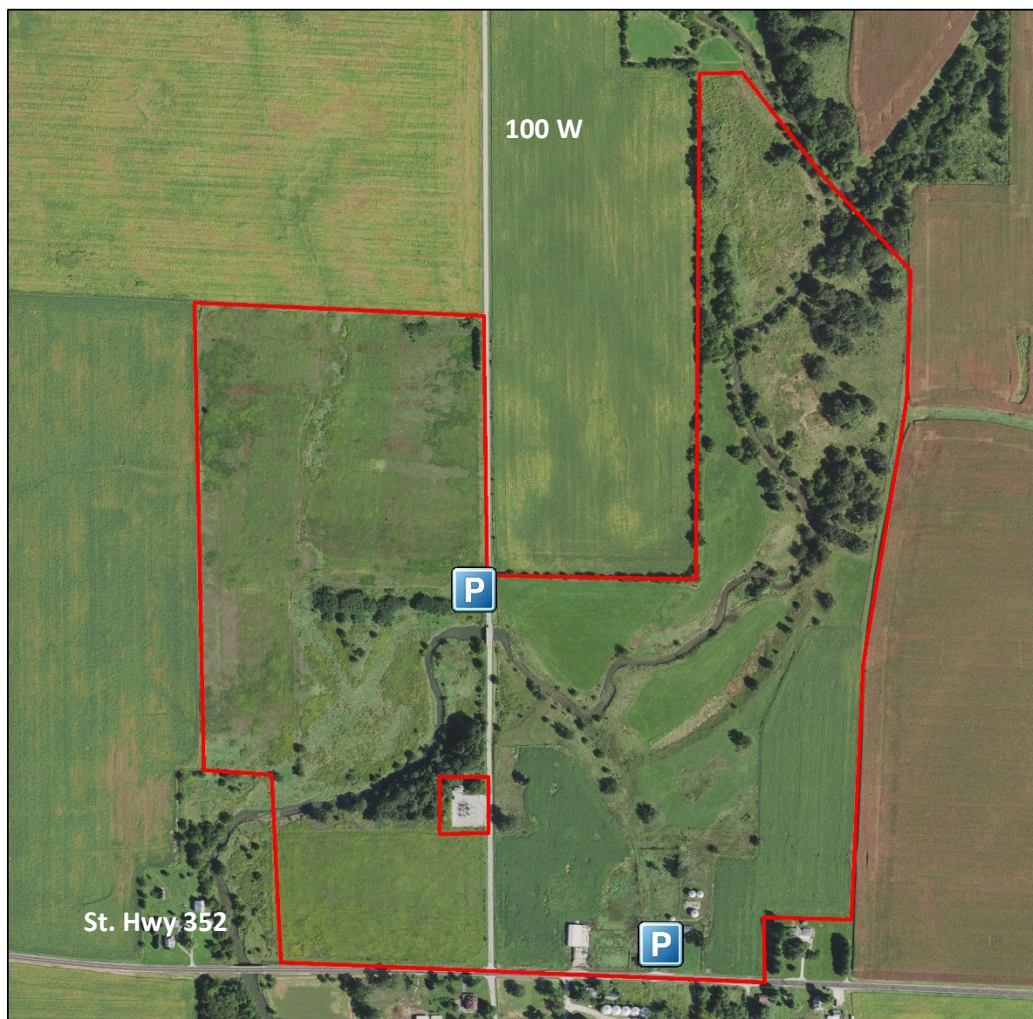


Mud Pine Game Bird Area

Benton County, Indiana



Mud Pine Game Bird Area property is approximately 150 acres developed through the purchase of three parcels. In 1987, the original 54 acres were purchased and then 11 acres were added in 1991. In 2017, 85 acres were purchased east of C.R. 100 W. The property was acquired with Game Bird Habitat Stamp funds.

Access is by written permit only and is awarded only for hunting opportunities, research, and volunteer conservation work. No other access is granted. Call Willow Slough FWA at 219-285-2704 for more information.

Directions: From Boswell, travel east on S.R. 352 for 2 miles. Turn left (north) on C.R. 100 W. Travel ¼ mile north. Park by the sign on 100 W. or by the barns off S.R. 352. Obey property boundaries as delineated by signs. Be careful along S.R. 352, not only with your dogs, but also with your shot selection.

GPS coordinates for parking area: (40.524076, -87.342188). All boundaries on the map are approximate.