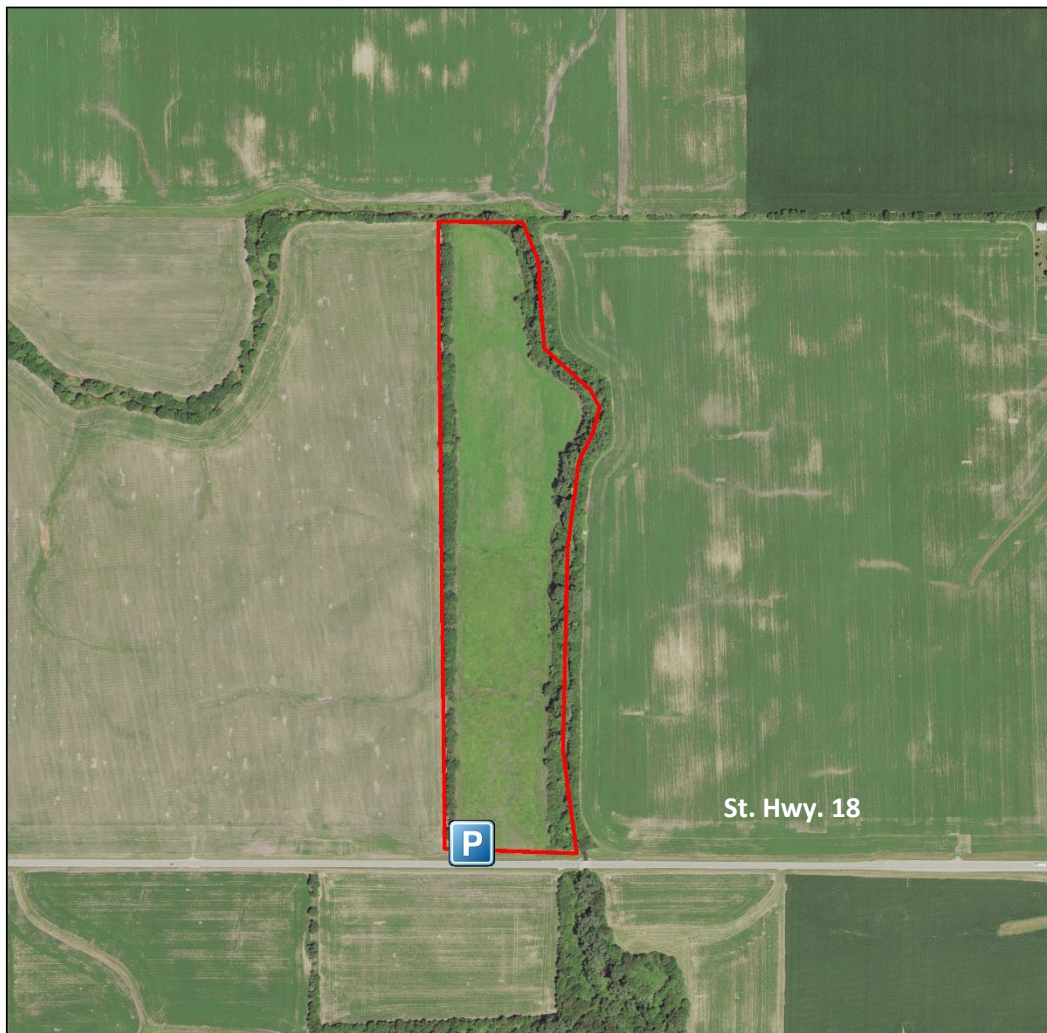


Greenwood Ditch Game Bird Area

Benton County, Indiana



Greenwood Ditch Game Bird Area is a 23-acre property. It was purchased by the Division of Fish & Wildlife in 1992 with Game Bird Habitat Stamp funds. The site is predominantly grass with a small stream meandering along the area's edge.

Access is by written permit only and is awarded only for hunting opportunities, research, and volunteer conservation work. No other access is granted. Call Willow Slough FWA at 219-285-2704 for more information.

Directions: From Fowler, go east on S.R. 18 for 7 miles. The property will be on the north side of the road. Park by the wooden sign.

GPS coordinates for the parking area: (40.606280, -87.178380). All boundaries on the map are approximate.