

# Everett Lake



**Lake Info:** 43 acres; 44 feet max depth  
**Location:** Northwest Allen County, IN  
**Access:** Public access with concrete ramp  
**Fishing Regulations:** Statewide  
**Outboard Motor Restrictions:** None  
**Amenities:** Seasonal Restroom, Beach  
**Recent Stockings:** Annually, 215 Muskellunge

**Best Fishing:** Muskie, Largemouth Bass

**DNR Contact Information:**

Tyler Delauder, Assistant Fisheries Biologist D3  
1353 Governors Drive, Columbia City, IN 46725  
(260) 244-6805; D3fish@dnr.IN.gov

## Muskie

- Everett Lake has been stocked annually since 2010 to prey upon Gizzard Shad and to provide a Muskie fishing opportunity close to Fort Wayne, IN.
- Three Muskies were collected in 2013 while DFW was testing electrofishing equipment. The largest measuring 33.0 inches long.
- In 2015, three additional Muskies were collected in a trap net. They ranged in size from 35.5 inches to 37.25 inches long.
- The actual fishing pressure for Muskies on Everett Lake is unknown at this time, but anglers have reported catching fish along drop offs.



Two 35+” Muskies collected from a 2013 survey.

## Other Species

### Largemouth Bass

- Anglers report catching quality Largemouth Bass using baits that mimic shad. Gizzard Shad are abundant in the lake.
- In a 2010 fish survey the overall catch for Largemouth Bass was low, however 40% of the ones collected were legal size (>14.0 inches long).

### Black Crappie

- Black Crappie up to 10.0 inches were collected in the 2010 survey.
- Anglers report having success using minnows for bait.

## About the Area

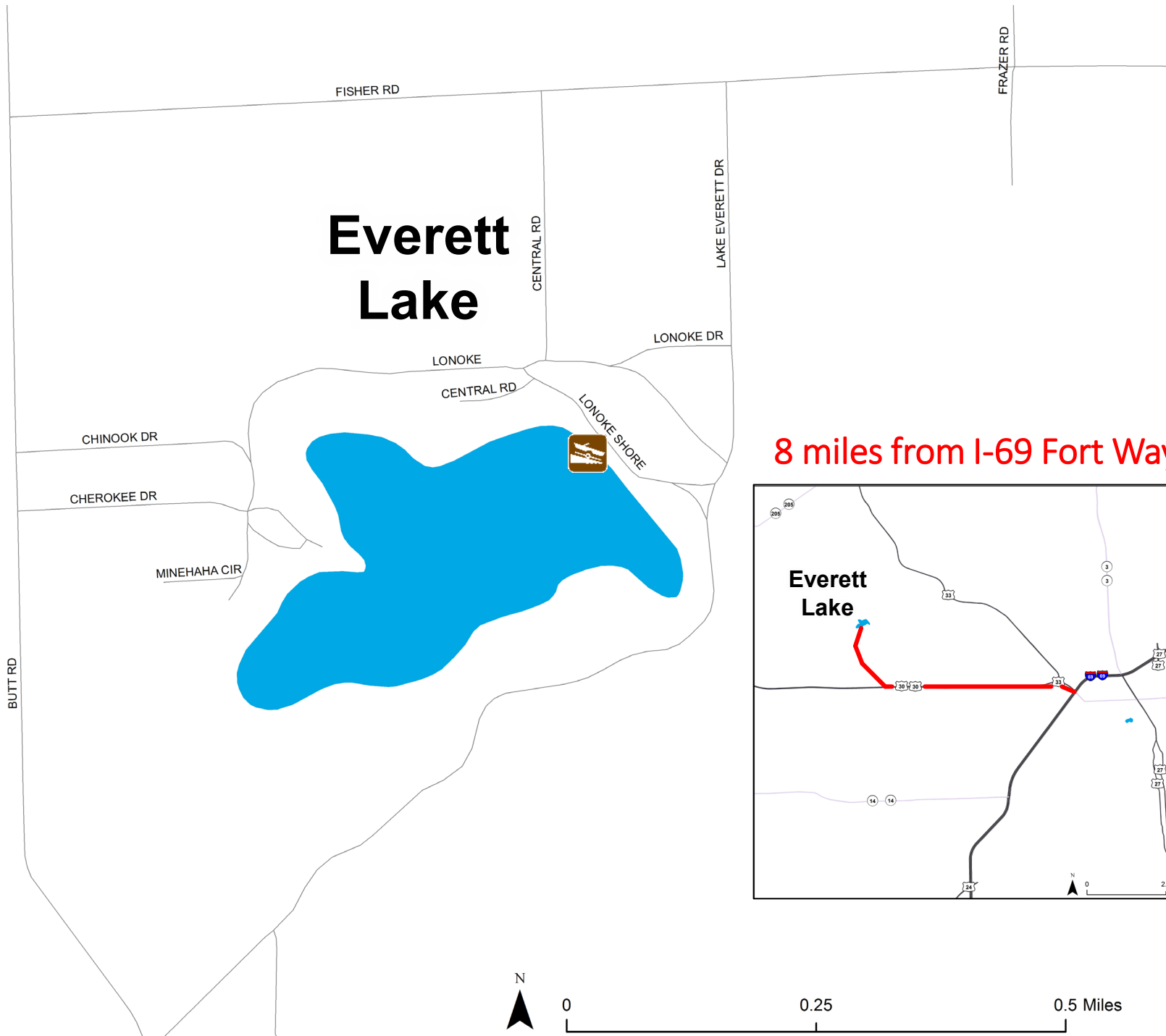
- Concrete boat launch with gravel parking lot
- Everett Lake is the only natural lake located in Allen County. The lake is located 15 minutes west of Fort Wayne, IN which is one of Indiana’s larger cities.
- Nearby Lakes in Whitley and Noble County provide anglers other fishing opportunities and are within 30 minutes of Everett.
- Lodging
  - Hotels in Fort Wayne, IN



Your purchase of fishing equipment and motor boat fuel supports boating access and Sport Fish Restoration.

Indiana Fishing Regulation Guide:

<http://www.in.gov/dnr/fishwild/2347.htm>



8 miles from I-69 Fort Wayne, IN

