

Interpretive Services

Everyone Benefits!

Each time you visit one of our properties, you benefit from the skills and enthusiasm of our interpretive naturalists. We provide up-to-date information on property bulletin boards. We connect with local Convention and Visitors' Bureaus, so we know about attractions and services in nearby communities. We create great brochures to help you discover plants and wildlife as you hike, camp or picnic. We help prepare gate attendants and other frontline staff to answer your questions.



Programming and interpretive centers are at the core of our Interpretive Services. We present 15,000-18,000 programs annually. A half million children and adults have fun discovering plants and animals and exploring the relationships between people and our natural heritage. Our interpretive centers and historic features attract 700,000 - 800,000 visitors each year.

Great Programs Make Great Memories!

Interpretive naturalists provide entertaining and inspiring programs that are a source of pride for the Indiana Department of Natural Resources. These outdoor educators, first called "nature guides," have been giving Hoosiers information and interpretive experiences for nearly 80 years.



I hear and I forget
I see and I remember
I do and I understand.

Special Events. Interpreters host workshops and events for wide range of audiences. Autumn Camping Weekend at Mississinewa Lake brings a thousand campers together for hikes, music and a giant chili supper. Eagle Watch events at Patoka and Monroe introduce hundreds of Hoosiers to our national symbol. Annual wildflower weekends at Brown County, McCormick's Creek and other properties cure spring fever for weekend visitors. Candlelight Tours draw large crowds to Spring Mill Village. Our annual Special Events Calendar provides an overview of these programs.

General Interpretive. Outdoor cooking demonstrations, talks about Indiana snakes, nature crafts, outdoor skills, games, campfires, slide programs and video presentations are just a few of the things you might see on the weekly or monthly program calendar at any state park or reservoir during the summer. Some properties offer programs every day; some on weekends only. At sites with full time interpreters, programs are offered year round. A property entry fee may apply at certain times of the year.

Environmental Education. Many schools make annual visits to our sites. Programs include general hikes, exploring unique features of a property, and curriculum-based sessions designed by interpreters and teachers. Sessions last 1-4 hours and are typically available at locations with a full time interpretive naturalist. Some sites offer in-school programming in winter. Programs are available to scout and other youth groups. Call early to schedule environmental education programs - we're in demand!

Teacher Workshops. Many of our interpretive naturalists are trained as facilitators in Project WILD, Project Learning Tree, Project WET, GoFishIN, Project Archaeology and Hoosier Riverwatch. Workshops are often scheduled to share these excellent resources with teachers, scout leaders and college classes.

Patch Programs. Our patch programs encourage one-on-one interaction. Together, interpreters and children explore plants, animals, history and the DNR. The Hoosier Pathfinder Patch Program requires hiking and completion of a service project, and provides scouts and other groups with a way to earn a patch. Patches are purchased through Turkey Run Inn.

Our Mission: to provide information and offer interpretive experiences with Indiana's natural and cultural resources to visitors, staff and a diverse public.

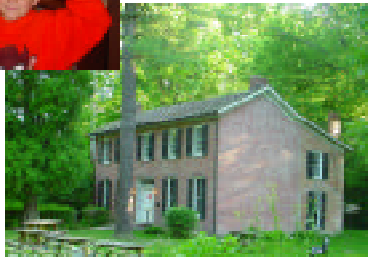


Other Services

Interpretive Centers. Many visitors make our interpretive centers one of their first stops when visiting a property. These centers provide information about everything from poison ivy to bird sightings to good hiking trails. Most centers have live snakes, turtles, salamanders and fish in the summer. Many have bird viewing windows where, in air-conditioned comfort, you can watch chickadees,



Students explore Pokagon Interpretive Center; the Bronnengberg Home at Mounds



woodpeckers, squirrels and chipmunks and other wildlife. We operate thirteen nature centers year round and nine additional centers during the summer season.



The Interpretive Center at Chain O'Lakes State Park is an old schoolhouse. It is open seasonally.

You can also explore an historic mill and a memorial to Gus Grissom (an Indiana astronaut) at Spring Mill State Park, an historic roller mill at Mansfield Mill/Raccoon SRA and the Lusk Home at Turkey Run State Park. Hardy Lake operates a raptor rehabilitation facility that is open to the public for special tours twice a year. Hours at our interpretive facilities vary; check with the property for days and times of operation before planning your visit.

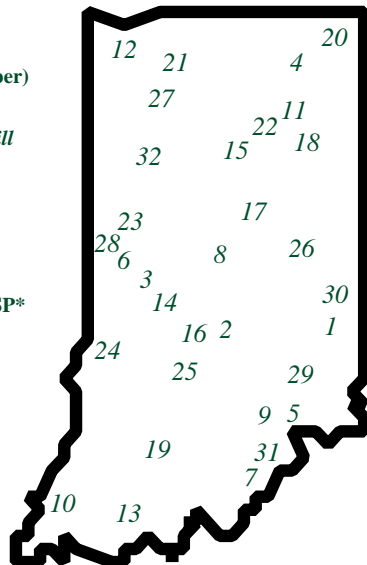
Great Information! “What is there to do here?” “What do I do with the baby bird in my yard?” “There’s a skunk under my deck!” “Where’s a good place to hike?” All of these are questions we hear often, and we are glad to help you find answers! Our Interpretive Centers are regional hubs for all sorts of information about local attractions and natural/cultural resource agencies. We can help you find fun things to do during your stay at the property, direct you to local wildlife

rehabilitators, help you find companies who handle nuisance wildlife and tell you where to find a cool place to hike or fish at the property you are visiting. We have brochures available on many natural and cultural history topics. Some of these brochures are available on the State Parks and Reservoirs Web Page, too.

Where to Find Us

State Parks and Reservoirs with Interpretive Services

1. Brookville Lake
2. **Brown County SP***
3. **Cagles Mill Lake(Lieber)**
4. Chain O'Lakes SP*
5. **Clifty Falls SP***
6. **Raccoon/Mansfield Mill**
7. **Falls of the Ohio SP***
8. **Ft. Harrison SP***
9. **Hardy Lake**
10. Harmonie SP*
11. **Huntington Lake**
12. **Indiana Dunes SP***
13. Lincoln SP*
14. **McCormick's Creek SP***
15. **Mississinewa Lake**
16. Monroe Lake*
17. **Mounds SP***
18. Ouabache SP
19. **Patoka Lake***
20. **Pokagon SP***
21. **Potato Creek SP***
22. **Salamonie Lake***
23. Shades SP
24. Shakamak SP*
25. **Spring Mill SP***
26. Summit Lake SP
27. Tippecanoe River SP*
28. **Turkey Run SP***
29. Versailles SP*
30. Whitewater SP*



- Coming Soon:
31. Charlestown SP
 32. Prophetstown SP

Bold Full time & seasonal interpretive naturalists, no Interpretive Center
Italic Full time & seasonal interpretive naturalists, historic site
Bold* Full time & seasonal interpretive naturalists, Interpretive Center
 Plain* Seasonal only interpretive naturalists, Interpretive Center
 Plain Seasonal only interpretive naturalists, no Interpretive Center

Why “Interpretive Naturalist”?

We use the title *interpretive* naturalist because we do much more than identify plants and wildlife. Yes, we are biologists, geologists, botanists and historians. More importantly, we are communicators who tell the stories of our sites. We encourage our visitors to discover the outdoors for themselves and to value the places they visit.

We serve as marketing and media representatives, provide advice and leadership in managing natural and cultural resources, design exhibits and outdoor signage, manage funds, plan strategically, supervise staff, work with technology (computers and audiovisual equipment), serve on local community boards and research history.

Call us or come and see us!
 We’re waiting to meet YOU!

DNR

Indiana Department of Natural Resources
 Division of State Parks & Reservoirs
 402 W. Washington Room W298
 Indianapolis, IN 46204
 1-877-463-6367

Web Page: <http://www.IN.gov/dnr/parklake>