

Oil and Gas Orphan Well program is committed to identifying and plugging orphan wells within the state to reduce the environmental impact of emissions, water contamination, and other concerns related to the lack of maintenance and oversight on historical wells. This project is one of several that is targeting clusters of such wells in close enough proximity that they can be combined into a single bid project.

The scope of work includes initial site characterization, emissions quantification where leaks are present, undergrowth clearing as necessary to ensure heavy equipment (drill rigs, cement trucks, etc.) can access the well locations, excavation of a lined drainage pit for capture of fluids during plugging, and the eventual plugging activities, which include excavation to dig up casing and flowline riser to cut off 3 feet below ground level as required by state regulations.

No new construction will be completed. The ground disturbance is limited to a 30-foot radius within which the drainage pit is excavated in proximity to the well. Each well has/had access roads cleared previously, though several have been poorly or not maintained. During plugging activities, 5-6 heavy trucks will be staged at or near the well location. Staging and clearing spaces are indicated by the crosshatched areas within the site maps.

This project includes the following wells:

Permit #	IGS ID#	Status	Type	County	Operator	Lease	Well #	Twp	T Dir	Rng	R Dir	Sect	UTMX	UTMY
20309	105128	Revoked	Class II	Spencer	J. & M. Properties, Inc.	David Sprinkle	W-2	6	S	4	W	11	515936	4206120
20523	105120	Revoked	Oil	Spencer	J. & M. Properties, Inc.	Michael Jacobs Heirs	1	6	S	4	W	11	516058	4206081
19970	105130	Revoked	Oil	Spencer	J. & M. Properties, Inc.	D. SPRINKLE	1	6	S	4	W	11	515865	4206054
25651	160904	Revoked	Class II	Spencer	J. & M. Properties, Inc.	DAVID SPRINKLE	5	6	S	4	W	14	515778	4206035
20310	105127	Revoked	Class II	Spencer	J. & M. Properties, Inc.	David Sprinkle	W-1	6	S	4	W	11	515796	4206107
20864	105126	Revoked	Class II	Spencer	J. & M. Properties, Inc.	D. Sprinkle	4	6	S	4	W	11	515714	4206176
154990	154990	Orphaned	Oil	Spencer	C.A. Busick	C.A. Busick	3	6	S	4	W	11	515639	4207431
47305	155041	Revoked	Geo/Test	Spencer	Covenant Oil, Inc.	Ruth Souder	1-A	6	S	4	W	2	515411	4207975
54250	165796	Revoked	Geo/Test	Spencer	Donald Yearby	Neal Dougan	1	6	S	4	W	2	515078	4207983
43467	155043	Revoked	Oil	Spencer	K.M.R.W. Oil Co.	James Clark	1	6	S	4	W	3	514794	4207933
48904	160909	Revoked	Oil	Spencer	Badger Drilling, Gary Badger Agent	J.D. Hopkins	9	6	S	4	W	15	513710	4205464

Reference NAD83 16S

Local Oil & Gas Inspector:

Ashley Seaton

812-459-4875

aseaton@dnr.IN.gov

Field Supervisor:

Kevin York

812-459-4864

kyork@dnr.IN.gov





20309

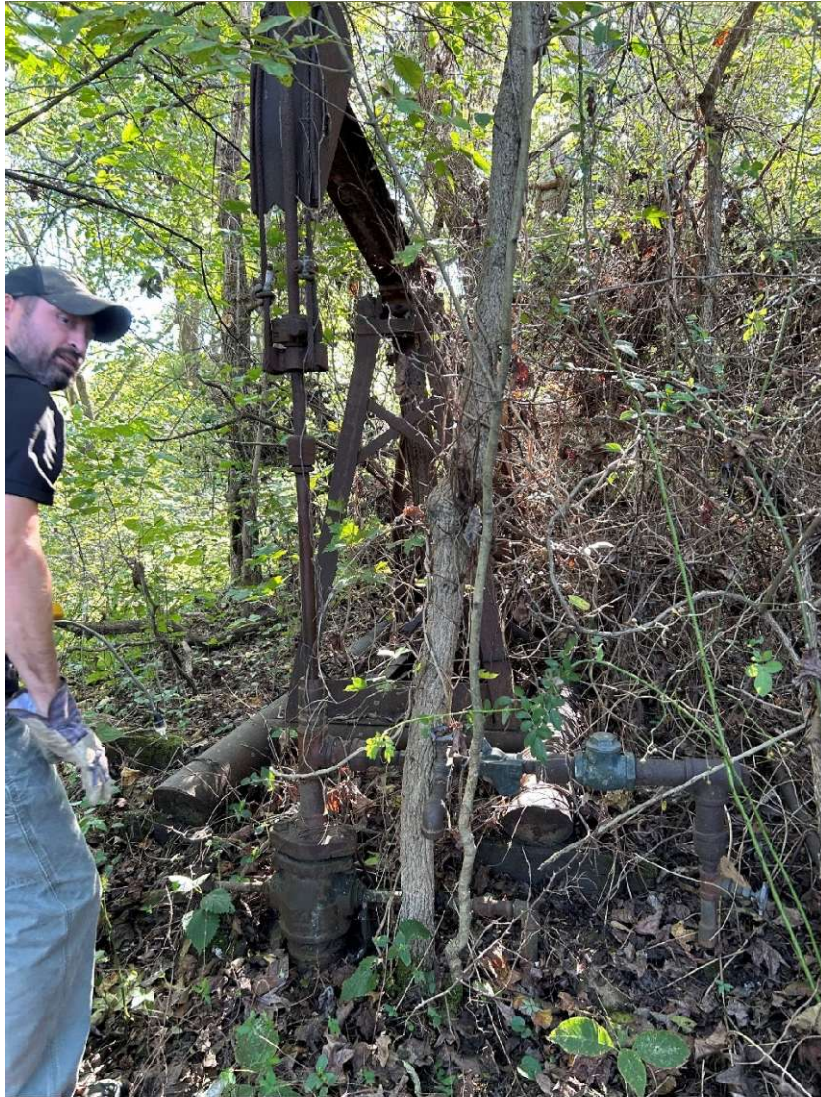


20523





25651





20864











54250









Spacer



WELL PLUGGING PLAN

State Form 54872 (R4 / 3-20) Form No. P2

INDIANA DEPARTMENT OF NATURAL RESOURCES

Division of Oil and Gas
402 West Washington Street, Room W293
Indianapolis, IN 46204
Telephone: (317) 232-4055
Internet: <http://www.in.gov/dnr/dnroil>

FOR STATE USE ONLY

Date Received (month, day, year)	Initials
8/18/2025	KPCJ
Date Approved (month, day, year)	Initials
8/27/2025	KPCJ
Date Denied (month, day, year)	Initials
Date Modified (month, day, year)	Initials

PART I GENERAL INFORMATION

Operator: Orphan Well		Telephone Number:	E-mail:
Lease-Well Number: J D Hopkins #9		Well Type: Oil	Permit Number: 48904
County: Spencer	Scheduled plugging date: (month, day, year)	Section: 15	Township: 6S Range: 4W 1/4's: NW SE NW

Surface:

Size	Length	Hole	Cement
8.675	122		

Long String:

Size	Length	Hole	Cement
4.5	486		15

Liner / Intermediate Casing:

Size	Length	Hole	Cement

Estimate top of cement (TOC): 384

Well Orientation

Vertical: ☒ Yes
Horizontal: ☐ Yes

Existing Perforations:

From 478 To 496
From To
From To

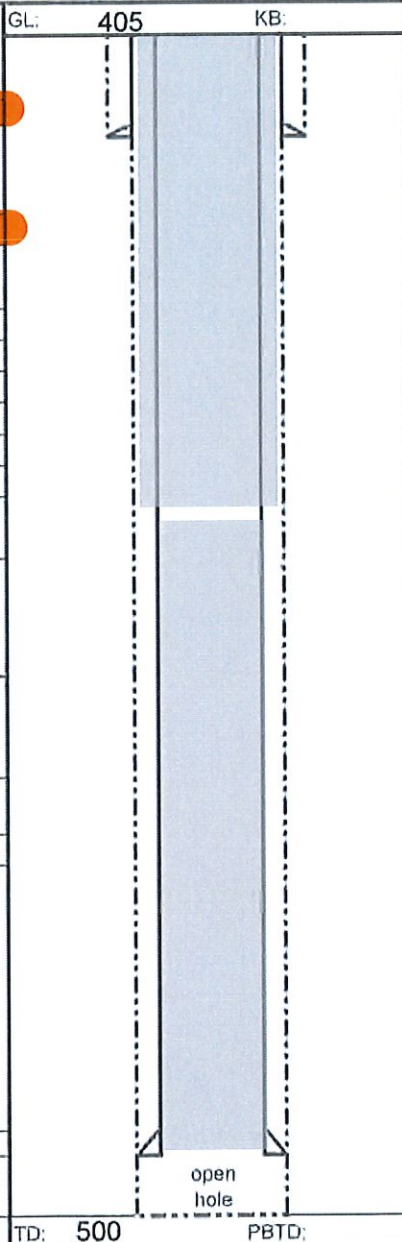
Proposed Perforations:

From 246 To 240
From To
From To

Proposed Casing to Pull - Amount:

Proposed cement types and volumes

Plug #1
Cmt Type A (bottom) Volume 40
Plug #2
Cmt Type A (top) Volume 55 ±
Plug #3
Cmt Type Volume
Plug #4
Cmt Type Volume



USDW Depth: 196

Well flowing? ☐ Yes ☒ No

Will you be disposing of NORM related waste during this plugging? ☐ Yes ☒ No
If yes, see Part III below.

Is well located in a commercially minable coal resource area? ☐ Yes ☒ No

If so, was the entity with rights to the coal rights notified? ☐ Yes When?

Who was notified?

Comments:

Top plug 246' to 0'

Perforate to circulation top plug

Verify cement on backside of casing bottom plug

Bottom plug TD to 246'

Measure/adjust bottom plug if TD shallower

Plug well 500'-0'
perforate as needed to circulate
annulus from 246'-0'

PART II AFFIRMATION

I affirm under penalty of perjury that the information provided in this plan is true and correct to the best of my knowledge and belief. Furthermore, I understand that this plan will not be valid until approved by the Division of Oil and Gas and that upon said approval, it will remain valid for a period of not more than 180 days thereafter, unless the construction of the well has changed which also voids the plan.

Signature of operator or authorized agent Date signed (month, day, year)

Cement

CIBP

Packer

Spacer

Spacer



WELL PLUGGING PLAN

State Form 54872 (R4 / 3-20) Form No. P2

INDIANA DEPARTMENT OF NATURAL RESOURCES

Division of Oil and Gas
402 West Washington Street, Room W293
Indianapolis, IN 46204
Telephone: (317) 232-4055
Internet: <http://www.in.gov/dnr/dnroil>

FOR STATE USE ONLY

Date Received (month, day, year)

8/18/2025

Initials

KPCJ

Date Approved (month, day, year)

8/27/2025

Initials

KPCJ

Date Denied (month, day, year)

Initials

Date Modified (month, day, year)

Initials

PART I GENERAL INFORMATION			
Operator: Orphan Well		Telephone Number:	E-mail:
Lease-Well Number: Neal Dougan #1		Well Type: Geo test/Dry hole	
County: Spencer		Scheduled plugging date: (month, day, year)	Permit Number: 54250
		Section: 2	Township: 6S
		Range: 4W	1/4's: NW SW SW
Surface:		GL: 458	KB:
Size Length Hole Cement			
8.675 79 12.25 65			
Long String:			
Size Length Hole Cement			
		7.875	
Liner / Intermediate Casing:			
Size Length Hole Cement			
Estimate top of cement (TOC): 0			
Well Orientation		Vertical: <input checked="" type="checkbox"/> Yes	
		Horizontal: <input type="checkbox"/> Yes	
Existing Perforations:			
From To			
From To			
From To			
Proposed Perforations:			
From To			
From To			
From To			
Proposed Casing to Pull - Amount:			
Proposed cement types and volumes			
Plug #1			
Cmt Type A		Volume 80±	
Plug #2			
Cmt Type		Volume	
Plug #3			
Cmt Type		Volume	
Plug #4			
Cmt Type		Volume	
		open hole	
TD: 1727		PBTD:	

USDW Depth: 202

Well flowing? ☐ Yes ☒ No

Will you be disposing of NORM related waste during this plugging? ☐ Yes ☒ No
If yes, see Part III below.

Is well located in a commercially minable coal resource area? ☐ Yes ☒ No
If so, was the entity with rights to the coal rights notified? ☐ Yes When?
Who was notified?

Comments:

Top plug 252' to 0'

Open hole past surface casing, not completed

Verify cement on backside of surface casing

Top plug only: 252'-0'

PART II AFFIRMATION

I affirm under penalty of perjury that the information provided in this plan is true and correct to the best of my knowledge and belief. Furthermore, I understand that this plan will not be valid until approved by the Division of Oil and Gas and that upon said approval, it will remain valid for a period of not more than 180 days thereafter, unless the construction of the well has changed which also voids the plan.

Signature of operator or authorized agent

Date signed (month, day, year)

Cement

CIBP

Packer

Spacer

Spacer

Spacer



WELL PLUGGING PLAN

State Form 54872 (R4 / 3-20) Form No. P2

INDIANA DEPARTMENT OF NATURAL RESOURCES

Division of Oil and Gas

402 West Washington Street, Room W293

Indianapolis, IN 46204

Telephone: (317) 232-4055

Internet: <http://www.in.gov/dnr/dnroil>

FOR STATE USE ONLY

Date Received (month, day, year)

8/18/2025

Initials

KPJ

Date Approved (month, day, year)

8/28/2025

Initials

KPJ

Date Denied (month, day, year)

Initials

Date Modified (month, day, year)

Initials

PART I				GENERAL INFORMATION											
Operator: Orphan Well		Telephone Number:		E-mail:											
Lease-Well Number: J&M Properties #3		Well Type: Oil		Permit Number: 22584											
County: Spencer		Scheduled plugging date: (month, day, year)		Section: 15	Township: 6S	Range: 4W	1/4's: NW SE NW								
Surface:		GL: 412 KB:		USDW Depth: 389											
<table border="1"><thead><tr><th>Size</th><th>Length</th><th>Hole</th><th>Cement</th></tr></thead><tbody><tr><td></td><td></td><td></td><td></td></tr></tbody></table>		Size	Length	Hole	Cement							Well flowing? <input type="checkbox"/> Yes <input checked="" type="checkbox"/> No			
Size	Length	Hole	Cement												
Long String:				Will you be disposing of NORM related waste during this plugging? <input type="checkbox"/> Yes <input checked="" type="checkbox"/> No											
<table border="1"><thead><tr><th>Size</th><th>Length</th><th>Hole</th><th>Cement</th></tr></thead><tbody><tr><td>5.5</td><td>725</td><td></td><td>200</td></tr></tbody></table>		Size	Length	Hole	Cement	5.5	725		200			If yes, see Part III below.			
Size	Length	Hole	Cement												
5.5	725		200												
Liner / Intermediate Casing:				Is well located in a commercially minable coal resource area? <input type="checkbox"/> Yes <input checked="" type="checkbox"/> No											
<table border="1"><thead><tr><th>Size</th><th>Length</th><th>Hole</th><th>Cement</th></tr></thead><tbody><tr><td></td><td></td><td></td><td></td></tr></tbody></table>		Size	Length	Hole	Cement							If so, was the entity with rights to the coal rights notified? <input type="checkbox"/> Yes When?			
Size	Length	Hole	Cement												
Estimate top of cement (TOC): 0				Who was notified?											
Well Orientation		Vertical: <input checked="" type="checkbox"/> Yes Horizontal: <input type="checkbox"/> Yes		Comments:											
Existing Perforations:				Top plug 439' to 0'											
From 725 To 733				Verify cement on backside of casing top and bottom plug											
Proposed Perforations:				Bottom plug TD to 475'											
From To				Measure/adjust bottom plug if TD shallower											
From To				Bottom plug: 736'-475'											
From To				Top plug: 439'-0'											
Proposed Casing to Pull - Amount:				verify cement on backside of long string											
Proposed cement types and volumes				TD: 736 PBTD:											
Plug #1															
Cmt Type A (bottom) Volume 51															
Plug #2															
Cmt Type A (top) Volume 31 ±															
Plug #3															
Cmt Type Volume															
Plug #4															
Cmt Type Volume															

PART II

AFFIRMATION

I affirm under penalty of perjury that the information provided in this plan is true and correct to the best of my knowledge and belief. Furthermore, I understand that this plan will not be valid until approved by the Division of Oil and Gas and that upon said approval, it will remain valid for a period of not more than 180 days thereafter, unless the construction of the well has changed which also voids the plan.

Signature of operator or authorized agent

Date signed (month, day, year)

Cement

CIBP

Packer

Spacer



WELL PLUGGING PLAN

State Form 54872 (R4 / 3-20) Form No. P2

INDIANA DEPARTMENT OF NATURAL RESOURCES

Division of Oil and Gas

402 West Washington Street, Room W293

Indianapolis, IN 46204

Telephone: (317) 232-4055

Internet: <http://www.in.gov/dnr/dnroil>

FOR STATE USE ONLY

Date Received (month, day, year)

8/18/2025

Initials

KPJ

Date Approved (month, day, year)

8/28/2025

Initials

KPJ

Date Denied (month, day, year)

Initials

Date Modified (month, day, year)

Initials

PART I GENERAL INFORMATION

Operator: Orphan Well

Telephone Number:

E-mail:

Lease-Well Number: David Sprinkle #5

Well Type: Enhanced Recovery

Permit Number: 25651

County: Spencer

Scheduled plugging date:
(month, day, year)

Section
14

Township
6S

Range
4W

1/4's

Surface:

Size	Length	Hole	Cement

Long String:

Size	Length	Hole	Cement
4.5	705		50

Liner / Intermediate Casing:

Size	Length	Hole	Cement

Estimate top of cement (TOC): 320

Well Orientation

Vertical: ☒ Yes
Horizontal: ☐ Yes

Existing Perforations:

From	To

Proposed Perforations:

From	To
315	310

Proposed Casing to Pull - Amount:

Proposed cement types and volumes

Plug #	Cmt Type	Volume
1	A (bottom)	26
2	A (top)	72
3		
4		

GL: 389 KB:

open hole

TD: 730 PBTD:

USDW Depth: 366

Well flowing? ☐ Yes ☒ No

Will you be disposing of NORM related waste during this plugging? ☐ Yes ☒ No
If yes, see Part III below.

Is well located in a commercially minable coal resource area? ☐ Yes ☒ No

If so, was the entity with rights to the coal rights notified? ☐ Yes When?

Who was notified?

Comments:

Top plug 416' to 0'

Perforate to circulation top plug

Verify cement on backside of casing bottom plug

Bottom plug TD to 555'

Measure/adjust bottom plug if TD shallower

JUNK IN HOLE???

Bottom plug: tag TD and cement TD-455'

Top plug: perforate as needed to circulate full 416'-0'

PART II

AFFIRMATION

I affirm under penalty of perjury that the information provided in this plan is true and correct to the best of my knowledge and belief. Furthermore, I understand that this plan will not be valid until approved by the Division of Oil and Gas and that upon said approval, it will remain valid for a period of not more than 180 days thereafter, unless the construction of the well has changed which also voids the plan.

Signature of operator or authorized agent

Date signed (month, day, year)

Cement

CIBP

Packer

Spacer

Spacer



WELL PLUGGING PLAN

State Form 54872 (R4 / 3-20) Form No. P2

INDIANA DEPARTMENT OF NATURAL RESOURCES

Division of Oil and Gas
402 West Washington Street, Room W293
Indianapolis, IN 46204
Telephone: (317) 232-4055
Internet: <http://www.in.gov/dnr/dnroil>

FOR STATE USE ONLY

Date Received (month, day, year)	Initials
8/18/2025	KPCJ
Date Approved (month, day, year)	Initials
8/28/2025	KPCJ
Date Denied (month, day, year)	Initials
Date Modified (month, day, year)	Initials

PART I GENERAL INFORMATION											
Operator: Orphan Well		Telephone Number:	E-mail:								
Lease-Well Number: James Clark #1		Well Type: Oil	Permit Number: 43467								
County: Spencer	Scheduled plugging date: (month, day, year)	Section: 3	Township: 6S Range: 4W 1/4's: NE SE SE								
Surface:		GL: 427 KB:									
<table border="1"><thead><tr><th>Size</th><th>Length</th><th>Hole</th><th>Cement</th></tr></thead><tbody><tr><td></td><td></td><td></td><td></td></tr></tbody></table>		Size	Length	Hole	Cement					<p>USDW Depth: 171</p> <p>Well flowing? <input type="checkbox"/> Yes <input checked="" type="checkbox"/> No</p> <p>Will you be disposing of NORM related waste during this plugging? <input type="checkbox"/> Yes <input checked="" type="checkbox"/> No</p> <p>If yes, see Part III below.</p> <p>Is well located in a commercially minable coal resource area? <input type="checkbox"/> Yes <input checked="" type="checkbox"/> No</p> <p>If so, was the entity with rights to the coal rights notified? <input type="checkbox"/> Yes When?</p> <p>Who was notified?</p> <p>Comments:</p> <p>Top plug 221' to 0'</p> <p>Perforate to circulation top plug</p> <p>Check for cement on backside of casing</p> <p>Bottom plug 1620'-1314'</p> <p>Measure/adjust bottom plug if completed zone shallower</p> <p>Bottom plug: perforate at 1425' and 1315', cement solid 1620'-1314'</p> <p>Top plug: perforate as needed to circulate full 221'-0'</p>	
Size	Length	Hole	Cement								
Long String:											
<table border="1"><thead><tr><th>Size</th><th>Length</th><th>Hole</th><th>Cement</th></tr></thead><tbody><tr><td>4.5</td><td>2409</td><td></td><td>200</td></tr></tbody></table>		Size	Length	Hole	Cement	4.5	2409		200		
Size	Length	Hole	Cement								
4.5	2409		200								
Liner / Intermediate Casing:											
<table border="1"><thead><tr><th>Size</th><th>Length</th><th>Hole</th><th>Cement</th></tr></thead><tbody><tr><td></td><td></td><td></td><td></td></tr></tbody></table>		Size	Length	Hole	Cement						
Size	Length	Hole	Cement								
Estimate top of cement (TOC): 1477'											
Well Orientation: Vertical: <input checked="" type="checkbox"/> Yes Horizontal: <input type="checkbox"/> Yes											
Existing Perforations:											
From 1564 To 1570											
From To											
From To											
Proposed Perforations:											
From 215 To 210											
From 1450 To 1445											
From To											
Proposed Casing to Pull - Amount:											
Proposed cement types and volumes											
Plug #1											
Cmt Type A (bottom) Volume 57±											
Plug #2											
Cmt Type A (top) Volume 64±											
Plug #3											
Cmt Type Volume											
Plug #4											
Cmt Type Volume											
TD: 2415 PBTD:											

PART II

AFFIRMATION

I affirm under penalty of perjury that the information provided in this plan is true and correct to the best of my knowledge and belief. Furthermore, I understand that this plan will not be valid until approved by the Division of Oil and Gas and that upon said approval, it will remain valid for a period of not more than 180 days thereafter, unless the construction of the well has changed which also voids the plan.

Signature of operator or authorized agent

Date signed (month, day, year)

Cement

CIBP

Packer

Spacer



WELL PLUGGING PLAN

State Form 54872 (R4 / 3-20) Form No. P2

INDIANA DEPARTMENT OF NATURAL RESOURCES

Division of Oil and Gas

402 West Washington Street, Room W293

Indianapolis, IN 46204

Telephone: (317) 232-4055

Internet: <http://www.in.gov/dnr/dnroil>

FOR STATE USE ONLY

Date Received (month, day, year)

8/18/2025

Initials

KPCJ

Date Approved (month, day, year)

8/28/205

Initials

KPCJ

Date Denied (month, day, year)

Initials

Date Modified (month, day, year)

Initials

PART I

GENERAL INFORMATION

Operator: Orphan Well

Telephone
Number:

E-mail:

Lease-Well Number: David Sprinkle W-1

Well Type: Enhanced Recovery

Permit Number: 20310

County: Spencer

Scheduled plugging date:
(month, day, year)

Section
11

Township
6S

Range
4W

1/4's

Surface:

Size	Length	Hole	Cement

Long String:

Size	Length	Hole	Cement
4.5	800	6.75	25

Liner / Intermediate Casing:

Size	Length	Hole	Cement

Estimate top of cement (TOC): 619.7

Well Orientation

Vertical: ☒ Yes
Horizontal: ☐ Yes

Existing Perforations:

From 810 To 812

From To
From To

Proposed Perforations:

From 495 To 490

From To
From To

Proposed Casing to Pull - Amount:

Proposed cement types and volumes

Plug #1

Cmt Type A (bottom) Volume 32

Plug #2

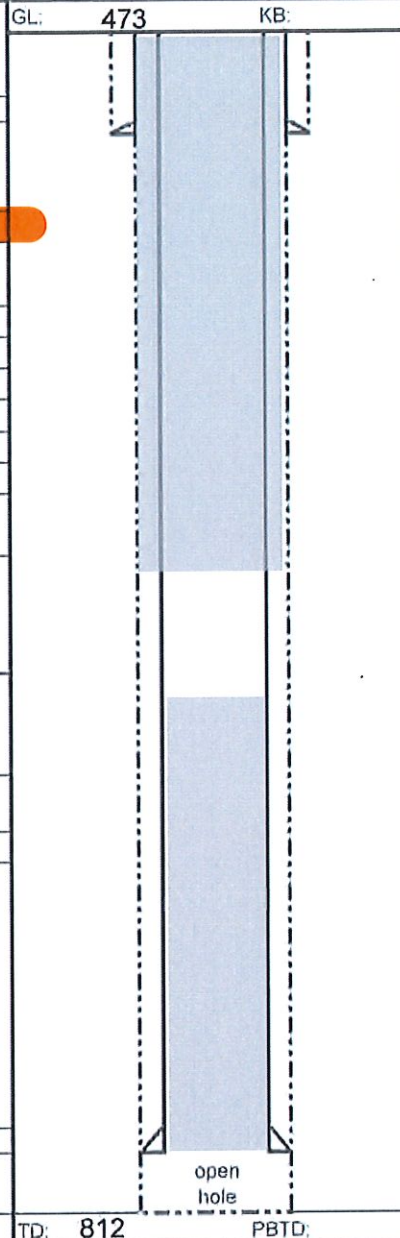
Cmt Type A (top) Volume 101

Plug #3

Cmt Type Volume

Plug #4

Cmt Type Volume



USDW Depth: 450

Well flowing? ☐ Yes ☒ No

Will you be disposing of NORM related waste during this plugging? ☐ Yes ☒ No
If yes, see Part III below.

Is well located in a commercially minable coal resource area? ☐ Yes ☒ No

If so, was the entity with rights to the coal rights notified? ☐ Yes When?

Who was notified?

Comments:

Top plug 500' to 0'

Perforate to circulation top plug

Verify cement on backside of casing bottom plug

Bottom plug TD to 550'

Measure/adjust bottom plug if TD shallower

Bottom plug: 812'-550'

Top plug: perforate as needed to circulate full 500'-0'

PART II

AFFIRMATION

I affirm under penalty of perjury that the information provided in this plan is true and correct to the best of my knowledge and belief. Furthermore, I understand that this plan will not be valid until approved by the Division of Oil and Gas and that upon said approval, it will remain valid for a period of not more than 180 days thereafter, unless the construction of the well has changed which also voids the plan.

Signature of operator or authorized agent

Date signed (month, day, year)

Cement

CIBP

Packer

Spacer