

Oil and Gas Orphan Well program is committed to identifying and plugging orphan wells within the state to reduce the environmental impact of emissions, water contamination, and other concerns related to the lack of maintenance and oversight on historical wells. This project is one of several that is targeting clusters of such wells in close enough proximity that they can be combined into a single bid project.

The scope of work includes initial site characterization, emissions quantification where leaks are present, undergrowth clearing as necessary to ensure heavy equipment (drill rigs, cement trucks, etc.) can access the well locations, excavation of a lined drainage pit for capture of fluids during plugging, and the eventual plugging activities, which include excavation to dig up casing and flowline riser to cut off 3 feet below ground level as required by state regulations.

No new construction will be completed. The ground disturbance is limited to a 30-foot radius within which the drainage pit is excavated in proximity to the well. Each well has/had access roads cleared previously, though several have been poorly or not maintained. During plugging activities, 5-6 heavy trucks will be staged at or near the well location.

Note: all ground disturbance activities are located where the ground has previously been disturbed during well construction.

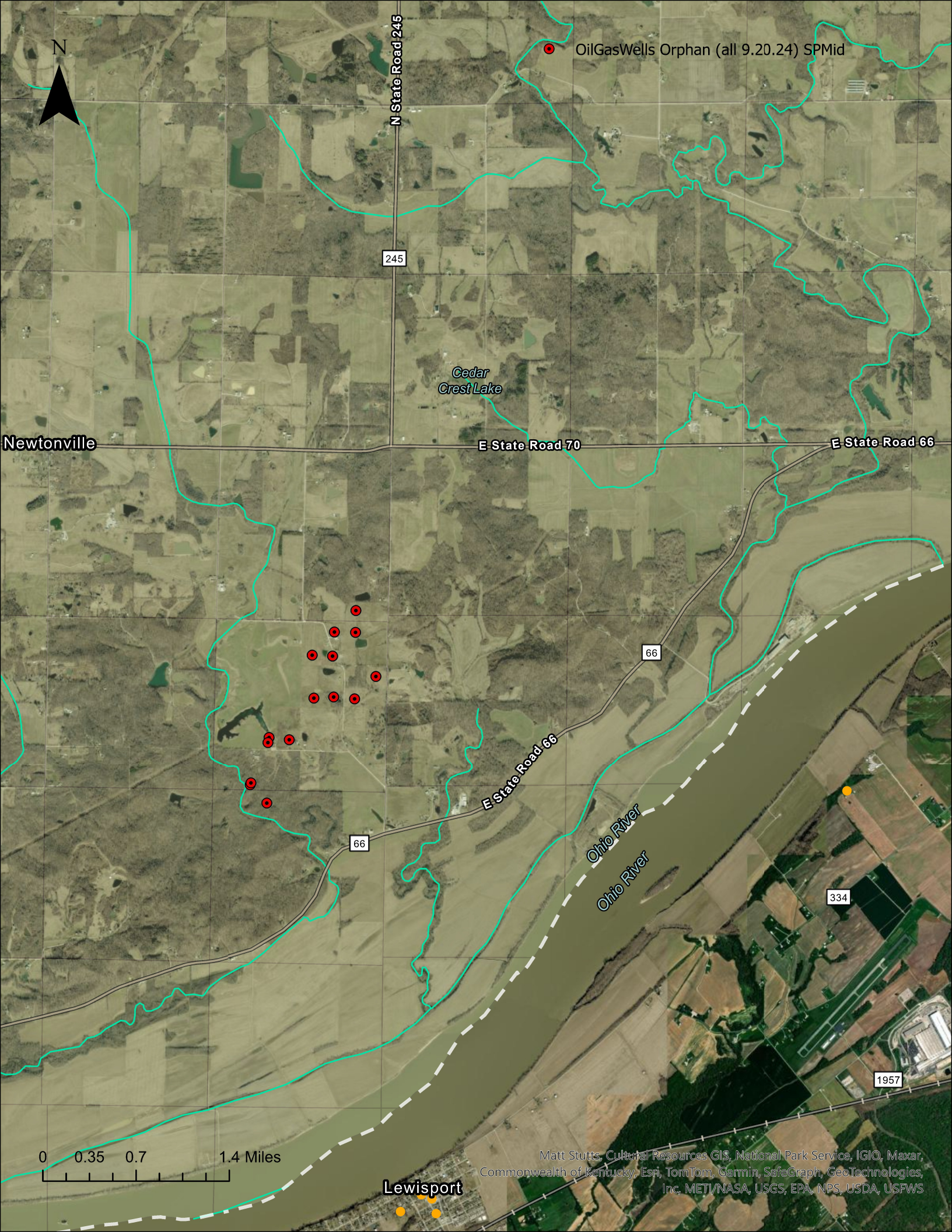
This project includes the following wells:

Permit #	IGS	Status	Type	County	Operator	Lease	Well #	Twp	T Dir	Rng	R Dir	Sect	UTMX	UTMY
16360	105457	Revoked	Oil	Spencer	Roskee Corp.	J.Sam Varner	1	6	S	5	W	24	507275	4203155
21546	105322	RevInj	Enh. Rec.	Spencer	Roskee Corp.	Edward Hagan	B-3	6	s	5	W	13	507910	4204383
21545	105429	RevInj	Enh. Rec.	Spencer	Roskee Corp.	Ed Hagan	3	6	S	5	W	24	507705	4204179
26821	105433	RevInj	Enh. Rec.	Spencer	Roskee Corp.	Edward Hagan	2-B	6	S	5	W	24	507907	4204176
26820	105443	Revoked	Enh. Rec.	Spencer	Roskee Corp.	John Raaf	1	6	S	5	W	24	507898	4203545
26822	105448	Revoked	Enh. Rec.	Spencer	Roskee Corp.	John Raaf	4	6	S	5	W	24	508102	4203758
17913	105441	Revoked	Oil	Spencer	Roskee Corp.	Herman & Cora Howell	4	6	S	5	W	24	507699	4203563
18344	105428	Revoked	Oil	Spencer	Roskee Corp.	Edward E. Hagan	1	6	S	5	W	24	507688	4203950
21543	105432	Revoked	Enh. Rec.	Spencer	Roskee Corp.	E. Hagan	2	6	S	5	W	24	507494	4203960
16700	105459	Revoked	Oil	Spencer	Roskee Corp.	J. Sam & Albert Varner	3	6	S	5	W	24	507073	4203129
19764	105454	Revoked	Enh. Rec.	Spencer	Roskee Corp.	J. & A. Varner	4	6	S	6	W	35	507084	4203176
18025	105422	Revoked	Oil	Spencer	Roskee Corp.	Jess Dauby	2	6	S	5	W	24	506904	4202721
19767	105426	Revoked	Enh. Rec.	Spencer	Roskee Corp.	Jesse Dauby	3	6	S	5	W	24	506912	4202738

Reference NAD83 16S

Local Oil & Gas Inspector:
Ashley Seaton
812-459-4875
aseaton@dnr.IN.gov

Field Supervisor:
Kevin York
812-459-4864
kyork@dnr.IN.gov



N

N State Road 245

245

Cedar
Crest Lake

Newtonville

E State Road 70

E State Road 66

66

E State Road 66

66

Ohio River
Ohio River

334

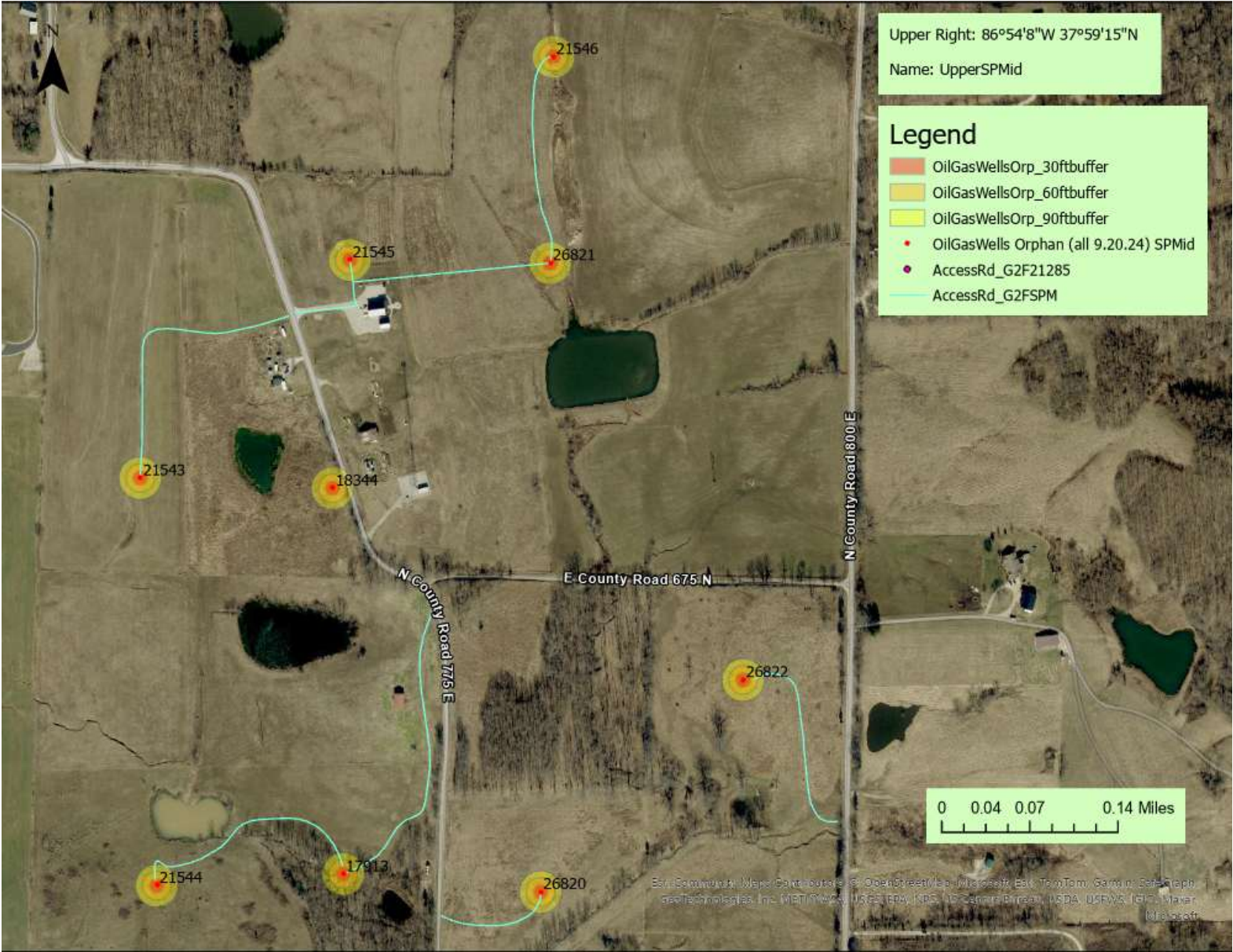
1957

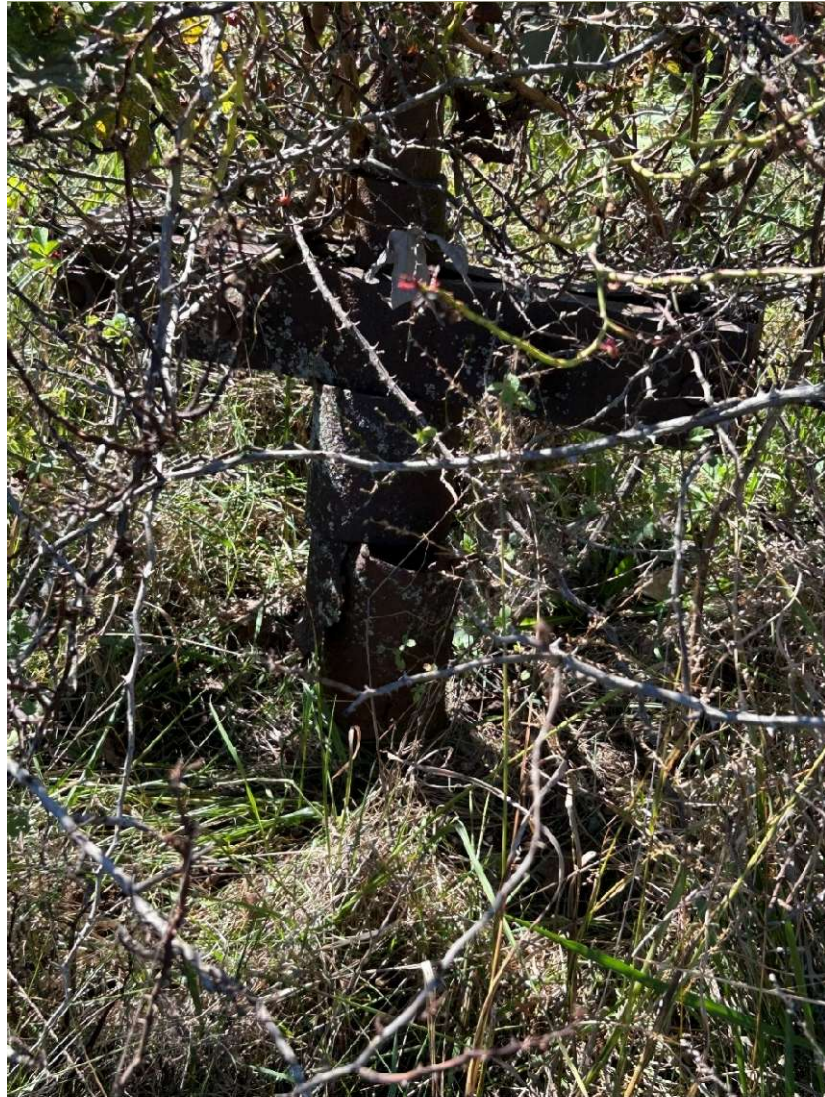
Lewisport

0 0.35 0.7 1.4 Miles

Matt Stutts, Cultural Resources GIS, National Park Service, IGIO, Maxar,
Commonwealth of Kentucky, Esri, TomTom, Garmin, SafeGraph, GeoTechnologies,
inc, METI/NASA, USGS, EPA, NPS, USDA, USFWS

OilGasWells Orphan (all 9.20.24) SPMid





Access (gate) to 26822





Specifications in project: heavy equipment to take alternate routes to well sites to avoid traversing bridge

18344



21543



21545



26821



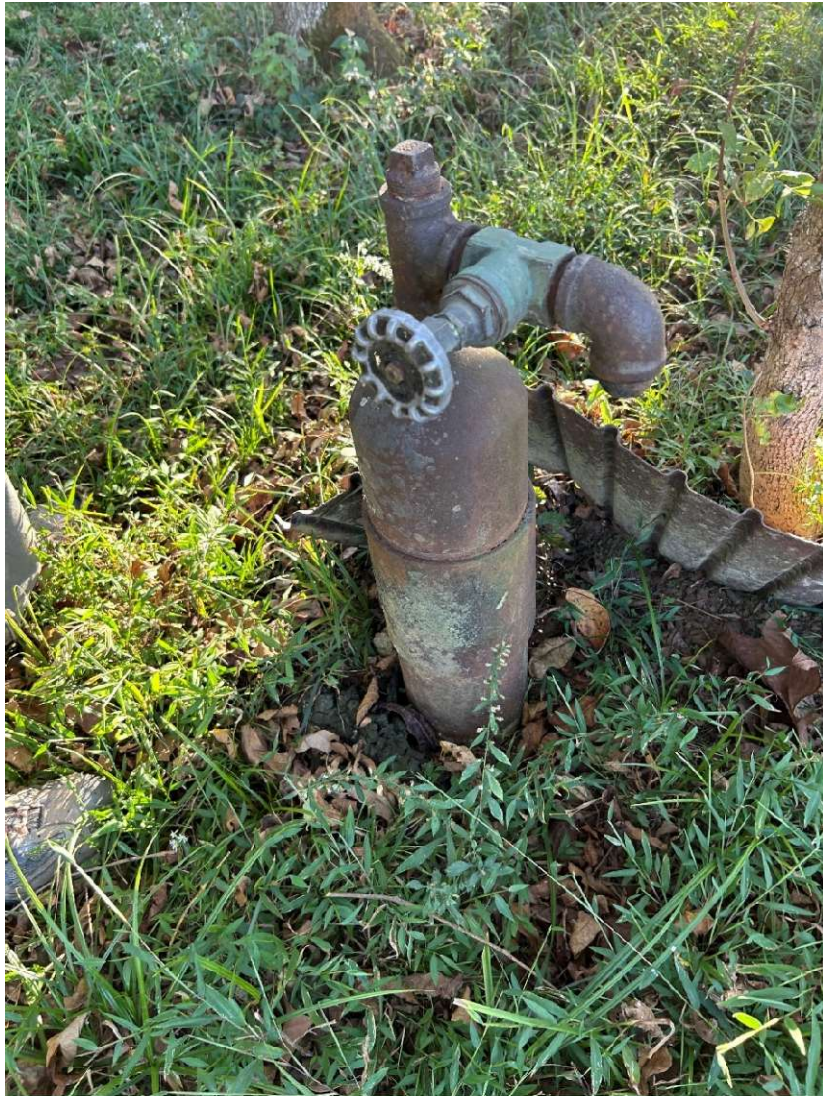
21546



26820



17913



21544 was not located above ground, in cow pasture—may have to locate via drone





19764



16700



19767



18025



Well 21285 was not located above ground: near waterway and possibly on side we could not reach—may have to locate via drone



WELL PLUGGING PLAN

State Form 54872 (R4 / 3-20) Form No. P2

INDIANA DEPARTMENT OF NATURAL RESOURCES

Division of Oil and Gas

402 West Washington Street, Room W293

Indianapolis, IN 46204

Telephone: (317) 232-4055

Internet: <http://www.in.gov/dnr/dnroil>

FOR STATE USE ONLY

Date Received (month, day, year)

8/15/2025

Initials

KPCJ

Date Approved (month, day, year)

8/21/2025

Initials

KPCJ

Date Denied (month, day, year)

Initials

Date Modified (month, day, year)

Initials

PART I

GENERAL INFORMATION

Operator: Orphan Well

Telephone
Number:

E-mail:

Lease-Well Number: Jess Dauby 2

Well Type: Oil

Permit Number: 18025

County: Spencer

Scheduled plugging date:
(month, day, year)

Section
24

Township
6S

Range
5W

1/4's
SE SW NE

Surface:

Size	Length	Hole	Cement
10	90		unk

Long String:

Size	Length	Hole	Cement
7	756		unk

Liner / Intermediate Casing:

Size	Length	Hole	Cement
8	422		unk

Estimate top of cement (TOC): n/a

Well Orientation

Vertical: ☒ Yes
Horizontal: ☐ Yes

Existing Perforations:

From 758	To 766
From	To
From	To

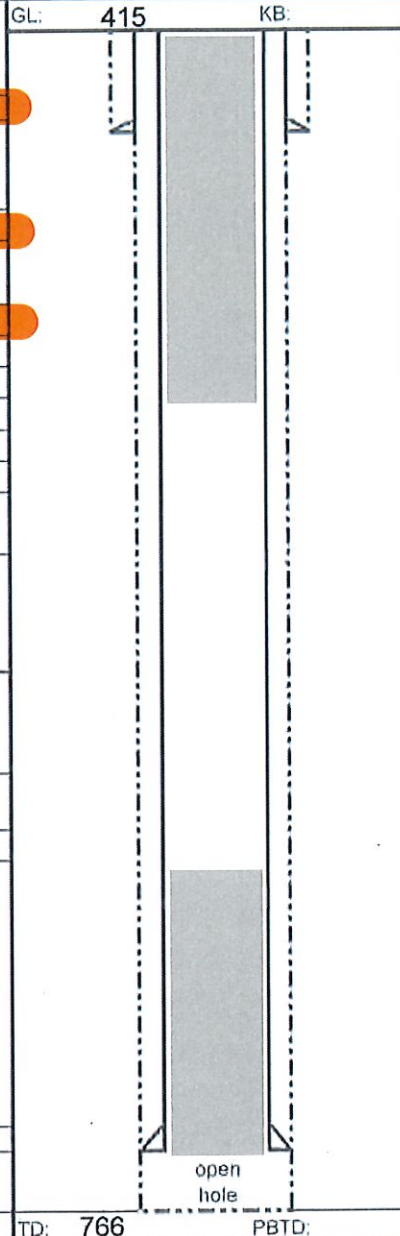
Proposed Perforations:

From 400	To 405
From	To
From	To

Proposed Casing to Pull - Amount:

Proposed cement types and volumes

Plug #1	
Cmt Type A	Volume 80
Plug #2	
Cmt Type A	Volume 72
Plug #3	
Cmt Type	Volume
Plug #4	
Cmt Type	Volume



USDW Depth: 120

Well flowing? ☐ Yes ☒ No

Will you be disposing of NORM related waste during this plugging? ☐ Yes ☒ No
If yes, see Part III below.

Is well located in a commercially minable coal resource area? ☐ Yes ☒ No

If so, was the entity with rights to the coal rights notified? ☐ Yes When?

Who was notified?

Comments:

Top plug 170' to 0'

Perforate to circulation top and bottom plug

Bottom plug TD to 508'

Measure/adjust bottom plug if TD shallower

Bottom plug: perforate at 750' and 508'
place cement 766'-508'

Top plug: perforate as needed to circulate full 170'-0'

PART II

AFFIRMATION

I affirm under penalty of perjury that the information provided in this plan is true and correct to the best of my knowledge and belief. Furthermore, I understand that this plan will not be valid until approved by the Division of Oil and Gas and that upon said approval, it will remain valid for a period of not more than 180 days thereafter, unless the construction of the well has changed which also voids the plan.

Signature of operator or authorized agent

Date signed (month, day, year)

Cement

CIBP

Packer

Spacer





WELL PLUGGING PLAN

State Form 54872 (R4 / 3-20) Form No. P2

INDIANA DEPARTMENT OF NATURAL RESOURCES

Division of Oil and Gas
402 West Washington Street, Room W293
Indianapolis, IN 46204
Telephone: (317) 232-4055
Internet: <http://www.in.gov/dnr/dnroil>

FOR STATE USE ONLY

Date Received (month, day, year)	Initials
8/15/2025	KPCJ
Date Approved (month, day, year)	Initials
8/21/2025	KPCJ
Date Denied (month, day, year)	Initials
Date Modified (month, day, year)	Initials

PART I GENERAL INFORMATION											
Operator: Orphan Well		Telephone Number:	E-mail:								
Lease-Well Number: Ed Hagan 1		Well Type: Oil	Permit Number: 18344								
County: Spencer	Scheduled plugging date: (month, day, year)	Section: 24	Township: 6S Range: 5W 1/4's: SE NW NE								
Surface:		GL: 488	KB:								
<table border="1"><thead><tr><th>Size</th><th>Length</th><th>Hole</th><th>Cement</th></tr></thead><tbody><tr><td></td><td></td><td></td><td></td></tr></tbody></table>		Size	Length	Hole	Cement					<div>USDW Depth: 169</div> <div>Well flowing? <input type="checkbox"/> Yes <input checked="" type="checkbox"/> No</div> <div>Will you be disposing of NORM related waste during this plugging? <input type="checkbox"/> Yes <input checked="" type="checkbox"/> No</div> <div>If yes, see Part III below.</div> <div>Is well located in a commercially minable coal resource area? <input type="checkbox"/> Yes <input checked="" type="checkbox"/> No</div> <div>If so, was the entity with rights to the coal rights notified? <input type="checkbox"/> Yes When?</div> <div>Who was notified?</div> <div>Comments:</div> <div>Top plug 219' to 0'</div> <div>Perforate to circulation top and bottom plug</div> <div>Bottom plug TD to 549'</div> <div>Verify cement on backside of casing</div> <div>Measure/adjust bottom plug if TD shallower</div> <div>Bottom plug: perforate at 1020' and 549' cement 1038'-549'</div> <div>Top plug: perforate as needed to circulate full 219'-0'</div>	
Size	Length	Hole	Cement								
Long String:											
<table border="1"><thead><tr><th>Size</th><th>Length</th><th>Hole</th><th>Cement</th></tr></thead><tbody><tr><td>4.25</td><td>1026</td><td></td><td></td></tr></tbody></table>		Size	Length	Hole	Cement	4.25	1026				
Size	Length	Hole	Cement								
4.25	1026										
Liner / Intermediate Casing:											
<table border="1"><thead><tr><th>Size</th><th>Length</th><th>Hole</th><th>Cement</th></tr></thead><tbody><tr><td>7</td><td>799</td><td></td><td>15</td></tr></tbody></table>		Size	Length	Hole	Cement	7	799		15		
Size	Length	Hole	Cement								
7	799		15								
Estimate top of cement (TOC): 607											
Well Orientation: Vertical: <input checked="" type="checkbox"/> Yes Horizontal: <input type="checkbox"/> Yes											
Existing Perforations:											
From 799 To 809											
From 1026 To 1035											
From To											
Proposed Perforations:											
From 196 To 195											
From To											
From To											
Proposed Casing to Pull - Amount:											
Proposed cement types and volumes											
Plug #1											
Cmt Type A	Volume 61										
Plug #2											
Cmt Type A	Volume 81										
Plug #3											
Cmt Type	Volume										
Plug #4											
Cmt Type	Volume										
TD: 1038 PBTD:											

PART II AFFIRMATION

I affirm under penalty of perjury that the information provided in this plan is true and correct to the best of my knowledge and belief. Furthermore, I understand that this plan will not be valid until approved by the Division of Oil and Gas and that upon said approval, it will remain valid for a period of not more than 180 days thereafter, unless the construction of the well has changed which also voids the plan.

Signature of operator or authorized agent

Date signed (month, day, year)

Cement

CIBP

Packer

Spacer



WELL PLUGGING PLAN

State Form 54872 (R4 / 3-20) Form No. P2

INDIANA DEPARTMENT OF NATURAL RESOURCES

Division of Oil and Gas
402 West Washington Street, Room W293
Indianapolis, IN 46204
Telephone: (317) 232-4055
Internet: <http://www.in.gov/dnr/dnroil>

FOR STATE USE ONLY

Date Received (month, day, year)	Initials
8/15/2025	KPCJ
Date Approved (month, day, year)	Initials
8/2/2025	KPCJ
Date Denied (month, day, year)	Initials
Date Modified (month, day, year)	Initials

PART I GENERAL INFORMATION											
Operator: Orphan Well		Telephone Number:	E-mail:								
Lease-Well Number: J Sam & Albert Varner		Well Type: Enhanced Recovery	Permit Number: 19764								
County: Spencer	Scheduled plugging date: (month, day, year)	Section: 24	Township: 6S Range: 5W 1/4's: SW NE SW								
Surface:		GL: 407 KB:									
<table border="1"><thead><tr><th>Size</th><th>Length</th><th>Hole</th><th>Cement</th></tr></thead><tbody><tr><td></td><td></td><td></td><td></td></tr></tbody></table>		Size	Length	Hole	Cement					<p>USDW Depth: 112</p> <p>Well flowing? <input type="checkbox"/> Yes <input checked="" type="checkbox"/> No</p> <p>Will you be disposing of NORM related waste during this plugging? <input type="checkbox"/> Yes <input checked="" type="checkbox"/> No</p> <p>If yes, see Part III below.</p> <p>Is well located in a commercially minable coal resource area? <input type="checkbox"/> Yes <input checked="" type="checkbox"/> No</p> <p>If so, was the entity with rights to the coal rights notified? <input type="checkbox"/> Yes When? Who was notified?</p> <p>Comments:</p> <p>Top plug 162' to 0'</p> <p>Perforate to circulation top plug, verify cement on backside for bottom</p> <p>Bottom plug TD to 725'</p> <p>Bottom plug: 988'-725'</p> <p>Top plug: perforate as needed to circulate full 162'-0'</p>	
Size	Length	Hole	Cement								
Long String:											
<table border="1"><thead><tr><th>Size</th><th>Length</th><th>Hole</th><th>Cement</th></tr></thead><tbody><tr><td>4.5</td><td>975</td><td></td><td>70</td></tr></tbody></table>		Size	Length	Hole	Cement	4.5	975		70		
Size	Length	Hole	Cement								
4.5	975		70								
Liner / Intermediate Casing:											
<table border="1"><thead><tr><th>Size</th><th>Length</th><th>Hole</th><th>Cement</th></tr></thead><tbody><tr><td></td><td></td><td></td><td></td></tr></tbody></table>		Size	Length	Hole	Cement						
Size	Length	Hole	Cement								
Estimate top of cement (TOC): 501											
Well Orientation: Vertical: <input checked="" type="checkbox"/> Yes Horizontal: <input type="checkbox"/> Yes											
Existing Perforations:											
From 980 To 988											
From To											
From To											
Proposed Perforations:											
From 125 To 126											
From To											
From To											
Proposed Casing to Pull - Amount:											
Proposed cement types and volumes											
Plug #1											
Cmt Type A	Volume 20										
Plug #2											
Cmt Type A	Volume 36										
Plug #3											
Cmt Type	Volume										
Plug #4											
Cmt Type	Volume										
TD: 988 PBTD:											

PART II

AFFIRMATION

I affirm under penalty of perjury that the information provided in this plan is true and correct to the best of my knowledge and belief. Furthermore, I understand that this plan will not be valid until approved by the Division of Oil and Gas and that upon said approval, it will remain valid for a period of not more than 180 days thereafter, unless the construction of the well has changed which also voids the plan.

Signature of operator or authorized agent Date signed (month, day, year)

Cement

CIBP

Packer

Spacer



WELL PLUGGING PLAN

State Form 54872 (R4 / 3-20) Form No. P2

INDIANA DEPARTMENT OF NATURAL RESOURCES

Division of Oil and Gas

402 West Washington Street, Room W293

Indianapolis, IN 46204

Telephone: (317) 232-4055

Internet: <http://www.in.gov/dnr/dnroil>

FOR STATE USE ONLY

Date Received (month, day, year)

8/15/2025

Initials

KPCJ

Date Approved (month, day, year)

8/25/2025

Initials

KPCJ

Date Denied (month, day, year)

Initials

Date Modified (month, day, year)

Initials

PART I GENERAL INFORMATION

Operator: Orphan Well

Telephone
Number:

E-mail:

Lease-Well Number: Ed Hagan 3

Well Type: Enhanced Recovery

Permit Number: 21545

County: Spencer

Scheduled plugging date:
(month, day, year)

Section
24

Township
6S

Range
5W

1/4's
NE NW NE

Surface:

Size	Length	Hole	Cement

Long String:

Size	Length	Hole	Cement
7	770		15

Liner / Intermediate Casing:

Size	Length	Hole	Cement

Estimate top of cement (TOC): 575

Well Orientation

Vertical: ☒ Yes
Horizontal: ☐ Yes

Existing Perforations:

From 778 To 790

From To
From To

Proposed Perforations:

From 750 To 748

From 150 To 148

From To

Proposed Casing to Pull - Amount:

Proposed cement types and volumes

Plug #1

Cmt Type A Volume 54

Plug #2

Cmt Type A Volume 62

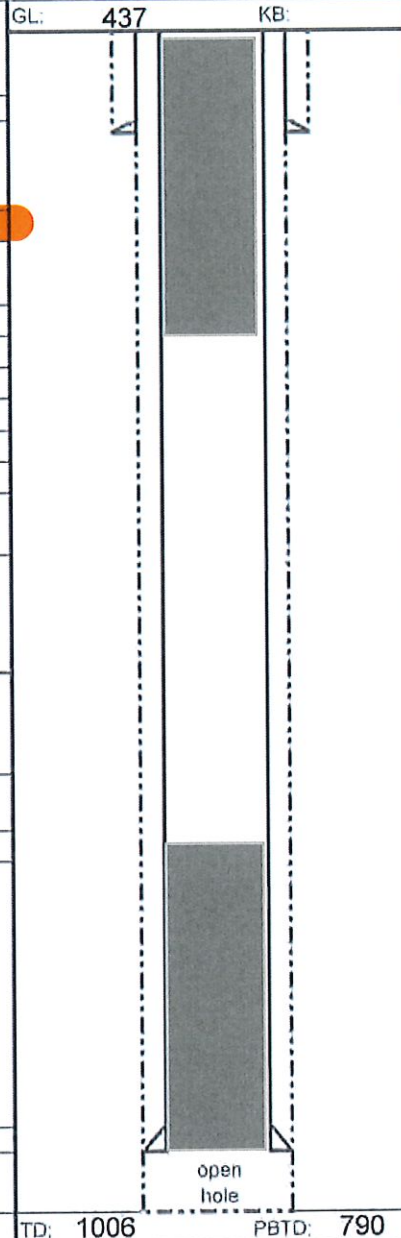
Plug #3

Cmt Type Volume

Plug #4

Cmt Type Volume

*CIBP



USDW Depth: 133

Well flowing? ☒ Yes ☐ No

Will you be disposing of NORM related waste during this plugging? ☐ Yes ☒ No

If yes, see Part III below.

Is well located in a commercially minable coal resource area? ☐ Yes ☒ No

If so, was the entity with rights to the coal rights notified? ☐ Yes When?

Who was notified?

Comments:

Top plug 183' to 0'

Perforate to circulation top and bottom plug

Bottom plug TD to 520'

Bottom plug: *if well flowing set CIBP at 754' w/2sx cement, if not flowing cement 1006'-520'

Top plug: perforate as needed to circulate full 183'-0'

Note: *if well is flowing at time of plugging then a CIBP must be set with 10 sacks cement on top instead of noted amounts

PART II

AFFIRMATION

I affirm under penalty of perjury that the information provided in this plan is true and correct to the best of my knowledge and belief. Furthermore, I understand that this plan will not be valid until approved by the Division of Oil and Gas and that upon said approval, it will remain valid for a period of not more than 180 days thereafter, unless the construction of the well has changed which also voids the plan.

Signature of operator or authorized agent

Date signed (month, day, year)

Cement

CIBP

Packer

Spacer

Spacer



WELL PLUGGING PLAN

State Form 54872 (R4 / 3-20) Form No. P2

INDIANA DEPARTMENT OF NATURAL RESOURCES

Division of Oil and Gas
402 West Washington Street, Room W293
Indianapolis, IN 46204
Telephone: (317) 232-4055
Internet: <http://www.in.gov/dnr/dnroil>

FOR STATE USE ONLY

Date Received (month, day, year)	Initials
8/15/2025	KPCJ
Date Approved (month, day, year)	Initials
8/25/2025	KPCJ
Date Denied (month, day, year)	Initials
Date Modified (month, day, year)	Initials

PART I GENERAL INFORMATION			
Operator: Orphan Well		Telephone Number:	E-mail:
Lease-Well Number: Ed Hagan B-3		Well Type: Enhanced Recovery	
County: Spencer		Scheduled plugging date: (month, day, year)	Permit Number: 21546
		Section: 13	Township: 6S
		Range: 5W	1/4's:
Surface:		GL: 425	KB:
Size Length Hole Cement			
Long String:			
Size Length Hole Cement			
4.5 765 40			
Liner / Intermediate Casing:			
Size Length Hole Cement			
Estimate top of cement (TOC): 548			
Well Orientation			
Vertical: <input checked="" type="checkbox"/> Yes			
Horizontal: <input type="checkbox"/> Yes			
Existing Perforations:			
From 774 To 788			
From To			
From To			
Proposed Perforations:			
From 530 To 528			
From 135 To 133			
From To			
Proposed Casing to Pull - Amount:			
Proposed cement types and volumes			
Plug #1			
Cmt Type A Volume 27			
Plug #2			
Cmt Type A Volume 44			
Plug #3			
Cmt Type Volume			
Plug #4			
Cmt Type Volume			
*CIBP			
TD: 1006		PBTD: 788	

USDW Depth: 130

Well flowing? ☒ Yes ☐ No

Will you be disposing of NORM related waste during this plugging? ☐ Yes ☒ No
If yes, see Part III below.

Is well located in a commercially minable coal resource area? ☐ Yes ☒ No

If so, was the entity with rights to the coal rights notified? ☐ Yes When?

Who was notified?

Comments:

Top plug 180' to 0'

Perforate to circulation top and bottom plug

Bottom plug TD to 515'

Note: *if well is flowing at time of plugging then a CIBP must be set with 10 sacks cement on top instead of noted amounts

Bottom plug: *if well flowing, set CIBP at 754' w/2sx cement, if not flowing cement 838'-524'

Top plug: perforate as needed to circulate full 180'-0'

PART II

AFFIRMATION

I affirm under penalty of perjury that the information provided in this plan is true and correct to the best of my knowledge and belief. Furthermore, I understand that this plan will not be valid until approved by the Division of Oil and Gas and that upon said approval, it will remain valid for a period of not more than 180 days thereafter, unless the construction of the well has changed which also voids the plan.

Signature of operator or authorized agent

Date signed (month, day, year)

Cement

CIBP

Packer

Spacer

Spacer



WELL PLUGGING PLAN

State Form 54872 (R4 / 3-20) Form No. P2

INDIANA DEPARTMENT OF NATURAL RESOURCES

Division of Oil and Gas

402 West Washington Street, Room W293

Indianapolis, IN 46204

Telephone: (317) 232-4055

Internet: <http://www.in.gov/dnr/dnroil>

FOR STATE USE ONLY

Date Received (month, day, year)

8/15/2025

Initials

KPCJ

Date Approved (month, day, year)

8/26/2025

Initials

KPCJ

Date Denied (month, day, year)

Initials

Date Modified (month, day, year)

Initials

PART I GENERAL INFORMATION

Operator: Orphan Well

Telephone
Number:

E-mail:

Lease-Well Number: John Raaf 1

Well Type: Enhanced Recovery

Permit Number: 26820

County: Spencer

Scheduled plugging date:
(month, day, year)

Section
24

Township
6S

Range
5W

1/4's
SW SE NE

Surface:

Size	Length	Hole	Cement

Long String:

Size	Length	Hole	Cement
4	734		30

Liner / Intermediate Casing:

Size	Length	Hole	Cement

Estimate top of cement (TOC): 612

Well Orientation

Vertical: ☒ Yes

Horizontal: ☐ Yes

Existing Perforations:

From 735 To 750

From To
From To

Proposed Perforations:

From 600 To 598

From 120 To 118

From To

Proposed Casing to Pull - Amount:

Proposed cement types and volumes

Plug #1

Cmt Type A Volume 51

Plug #2

Cmt Type A Volume 39

Plug #3

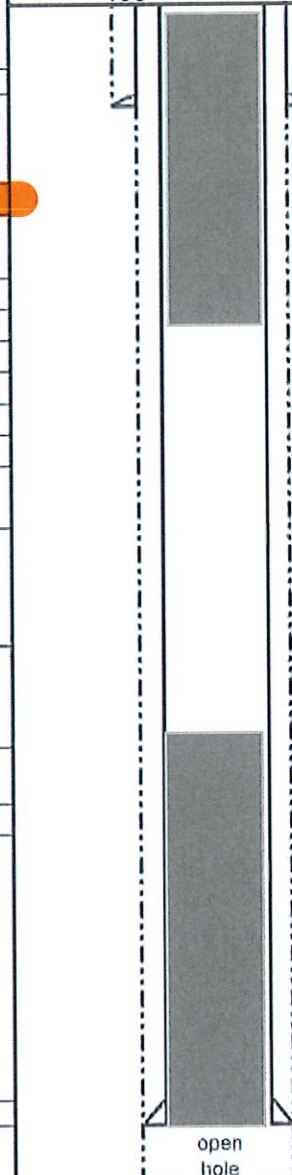
Cmt Type Volume

Plug #4

Cmt Type Volume

*CIBP

GL: 405 KB:



USDW Depth: 110

Well flowing? ☒ Yes ☐ No

Will you be disposing of NORM related waste during this plugging? ☐ Yes ☒ No
If yes, see Part III below.

Is well located in a commercially minable coal resource area? ☐ Yes ☒ No

If so, was the entity with rights to the coal rights notified? ☐ Yes When?

Who was notified?

Comments:

Top plug 160' to 0'

Perforate as needed to circulate 120' to 0' and bottom plug 612' to 484'

Bottom plug 750' - 484'

Note: *if well is flowing at time of plugging then a CIBP must be set with 10 sacks cement on top instead of noted amounts

Bottom plug: *if flowing set CIBP at 720' w/1sx cement, if not flowing perforate at 612' and 484', cement 750'-484'

Top plug: perforate as needed to circulate full 160'-0'

PART II AFFIRMATION

I affirm under penalty of perjury that the information provided in this plan is true and correct to the best of my knowledge and belief. Furthermore, I understand that this plan will not be valid until approved by the Division of Oil and Gas and that upon said approval, it will remain valid for a period of not more than 180 days thereafter, unless the construction of the well has changed which also voids the plan.

Signature of operator or authorized agent

Date signed (month, day, year)

Cement

CIBP

Packer

Spacer



WELL PLUGGING PLAN

State Form 54872 (R4 / 3-20) Form No. P2

INDIANA DEPARTMENT OF NATURAL RESOURCES
Division of Oil and Gas
402 West Washington Street, Room W293
Indianapolis, IN 46204
Telephone: (317) 232-4055
Internet: <http://www.in.gov/dnr/dnroil>

FOR STATE USE ONLY

Date Received (month, day, year)	Initials
8/15/2025	KPCJ
Date Approved (month, day, year)	Initials
8/26/2025	KPCJ
Date Denied (month, day, year)	Initials
Date Modified (month, day, year)	Initials

PART I				GENERAL INFORMATION											
Operator: Orphan Well		Telephone Number:		E-mail:											
Lease-Well Number: Hagan 2-B		Well Type: Enhanced Recovery		Permit Number: 26821											
County: Spencer		Scheduled plugging date: (month, day, year)		Section 24	Township 6S	Range 5W	1/4's NW NE NE								
Surface:		GL: 414 KB:		USDW Depth: 119											
<table border="1"><thead><tr><th>Size</th><th>Length</th><th>Hole</th><th>Cement</th></tr></thead><tbody><tr><td></td><td></td><td></td><td></td></tr></tbody></table>		Size	Length	Hole	Cement							Well flowing? <input type="checkbox"/> Yes <input checked="" type="checkbox"/> No			
Size	Length	Hole	Cement												
Long String:		Will you be disposing of NORM related waste during this plugging? <input type="checkbox"/> Yes <input checked="" type="checkbox"/> No													
<table border="1"><thead><tr><th>Size</th><th>Length</th><th>Hole</th><th>Cement</th></tr></thead><tbody><tr><td>7</td><td>746</td><td></td><td>25</td></tr></tbody></table>		Size	Length	Hole	Cement	7	746		25	If yes, see Part III below.					
Size	Length	Hole	Cement												
7	746		25												
Liner / Intermediate Casing:		Is well located in a commercially minable coal resource area? <input type="checkbox"/> Yes <input checked="" type="checkbox"/> No													
<table border="1"><thead><tr><th>Size</th><th>Length</th><th>Hole</th><th>Cement</th></tr></thead><tbody><tr><td></td><td></td><td></td><td></td></tr></tbody></table>		Size	Length	Hole	Cement					Estimate top of cement (TOC): 560		If so, was the entity with rights to the coal rights notified? <input type="checkbox"/> Yes When? Who was notified?			
Size	Length	Hole	Cement												
Well Orientation		Vertical: <input checked="" type="checkbox"/> Yes Horizontal: <input type="checkbox"/> Yes		Comments:											
Existing Perforations:		From 750 To 760		Top plug 169' to 0'											
Proposed Perforations:		From 125 To 126 From 525 To 526		Perforate to circulation top and bottom plug											
Proposed Casing to Pull - Amount:				Bottom plug TD to 496'											
Proposed cement types and volumes				Bottom plug: 810'-500'											
Plug #1		Cmt Type A Volume 69		Top plug: perforate as needed to circulate full 169'-0'											
Plug #2		Cmt Type A Volume 57													
Plug #3		Cmt Type Volume													
Plug #4		Cmt Type Volume													
TD: 1052		PBTD: 762													

PART II AFFIRMATION

I affirm under penalty of perjury that the information provided in this plan is true and correct to the best of my knowledge and belief. Furthermore, I understand that this plan will not be valid until approved by the Division of Oil and Gas and that upon said approval, it will remain valid for a period of not more than 180 days thereafter, unless the construction of the well has changed which also voids the plan.

Signature of operator or authorized agent _____ Date signed (month, day, year) _____

Cement

CIBP

Packer

Spacer



WELL PLUGGING PLAN

State Form 54872 (R4 / 3-20) Form No. P2

INDIANA DEPARTMENT OF NATURAL RESOURCES

Division of Oil and Gas

402 West Washington Street, Room W293

Indianapolis, IN 46204

Telephone: (317) 232-4055

Internet: <http://www.in.gov/dnr/dnroil>

FOR STATE USE ONLY

Date Received (month, day, year)

8/15/2025

Initials

RPG

Date Approved (month, day, year)

8/26/2025

Initials

RPG

Date Denied (month, day, year)

Initials

Date Modified (month, day, year)

Initials

PART I GENERAL INFORMATION

Operator: Orphan Well

Telephone Number:

E-mail:

Lease-Well Number: Howell 4

Well Type: Oil

Permit Number: 17913

County: Spencer

Scheduled plugging date:
(month, day, year)Section
24Township
6SRange
5W1/4's
SE SW NE

Surface:

Size	Length	Hole	Cement
10	46		unk

Long String:

Size	Length	Hole	Cement
8	490		unk

Liner / Intermediate Casing:

Size	Length	Hole	Cement

Estimate top of cement (TOC):

Well Orientation

Vertical: ☒ YesHorizontal: ☐ Yes

Existing Perforations:

From	To

Proposed Perforations:

From	To
115	113

Proposed Casing to Pull - Amount:

Proposed cement types and volumes

Plug #	Cmt Type	Volume
1	A	180
2	A	54
3		
4		

*CIBP

GL: 408 KB:

open hole

TD: 985

PBTD: 755

USDW Depth: 113

Well flowing? ☒ Yes ☐ NoWill you be disposing of NORM related waste during this plugging? ☐ Yes ☒ No

If yes, see Part III below.

Is well located in a commercially minable coal resource area? ☐ Yes ☒ NoIf so, was the entity with rights to the coal rights notified? ☐ Yes When?

Who was notified?

Comments:

May need to run CBL to locate top of cement

Top plug 163' to 0'

Perforate to circulation top and bottom plug

Perforate as needed to circulate backside of 8" casing 490'-0'

Bottom plug TD to 240'

Measure/adjust bottom plug if TD shallower

Note: *if well is flowing at time of plugging then a CIBP must be set with 10 sacks cement on top instead of noted amounts

Bottom plug: *if flowing set CIBP in circulated casing at 470' w/3sx cement

Top plug 163'-0'

If not flowing: perforate as needed to circulate full 490'-0'

PART II

AFFIRMATION

I affirm under penalty of perjury that the information provided in this plan is true and correct to the best of my knowledge and belief. Furthermore, I understand that this plan will not be valid until approved by the Division of Oil and Gas and that upon said approval, it will remain valid for a period of not more than 180 days thereafter, unless the construction of the well has changed which also voids the plan.

Signature of operator or authorized agent

Date signed (month, day, year)

Cement

CIBP

Packer

Spacer

Spacer



WELL PLUGGING PLAN

State Form 54872 (R4 / 3-20) Form No. P2

INDIANA DEPARTMENT OF NATURAL RESOURCES

Division of Oil and Gas
402 West Washington Street, Room W293
Indianapolis, IN 46204
Telephone: (317) 232-4055
Internet: <http://www.in.gov/dnr/dnroil>

FOR STATE USE ONLY

Date Received (month, day, year)	Initials
8/15/2025	KPG
Date Approved (month, day, year)	Initials
8/26/2025	KPG
Date Denied (month, day, year)	Initials
Date Modified (month, day, year)	Initials

PART I GENERAL INFORMATION											
Operator: Orphan Well		Telephone Number:	E-mail:								
Lease-Well Number: Jesse Dauby 3		Well Type: Enhanced Recovery									
County: Spencer		Permit Number: 19767									
Scheduled plugging date: (month, day, year)		Section: 24	Township: 6S								
		Range: 5W	1/4's: SE SW SW								
Surface:		GL: 410 KB:									
<table border="1"><thead><tr><th>Size</th><th>Length</th><th>Hole</th><th>Cement</th></tr></thead><tbody><tr><td>10</td><td>90</td><td></td><td></td></tr></tbody></table>		Size	Length	Hole	Cement	10	90				
Size	Length	Hole	Cement								
10	90										
Long String:											
<table border="1"><thead><tr><th>Size</th><th>Length</th><th>Hole</th><th>Cement</th></tr></thead><tbody><tr><td>5</td><td>986</td><td></td><td>40</td></tr></tbody></table>		Size	Length	Hole	Cement	5	986		40		
Size	Length	Hole	Cement								
5	986		40								
Liner / Intermediate Casing:											
<table border="1"><thead><tr><th>Size</th><th>Length</th><th>Hole</th><th>Cement</th></tr></thead><tbody><tr><td></td><td></td><td></td><td></td></tr></tbody></table>		Size	Length	Hole	Cement						
Size	Length	Hole	Cement								
Estimate top of cement (TOC): 805											
Well Orientation: Vertical: <input checked="" type="checkbox"/> Yes Horizontal: <input type="checkbox"/> Yes											
Existing Perforations:											
From To											
From To											
From To											
Proposed Perforations:											
From 115 To 113											
From 800 To 798											
From To											
Proposed Casing to Pull - Amount:											
Proposed cement types and volumes											
Plug #1											
Cmt Type A	Volume 35										
Plug #2											
Cmt Type A	Volume 35										
Plug #3											
Cmt Type	Volume										
Plug #4											
Cmt Type	Volume										
*CIBP											
TD: 1006 PBTD:											

USDW Depth: 115

Well flowing? ☒ Yes ☐ No

Will you be disposing of NORM related waste during this plugging? ☐ Yes ☒ No
If yes, see Part III below.

Is well located in a commercially minable coal resource area? ☐ Yes ☒ No
If so, was the entity with rights to the coal rights notified? ☐ Yes When?
Who was notified?

Comments:

Top plug 165' to 0'

Perforate to circulation top and bottom plug

Bottom plug TD to 736'

Note: *if well is flowing at time of plugging then a CIBP must be set with 10 sacks cement on top instead of noted amounts

Bottom plug: *if flowing set CIBP at 966' w/2sx cement, **if not flowing perforate at 736' and 805' then cement 1006'-736'

Top plug: perforate as needed to circulate full 165'-0'

PART II AFFIRMATION

I affirm under penalty of perjury that the information provided in this plan is true and correct to the best of my knowledge and belief. Furthermore, I understand that this plan will not be valid until approved by the Division of Oil and Gas and that upon said approval, it will remain valid for a period of not more than 180 days thereafter, unless the construction of the well has changed which also voids the plan.

Signature of operator or authorized agent

Date signed (month, day, year)

Cement

CIBP

Packer

Spacer