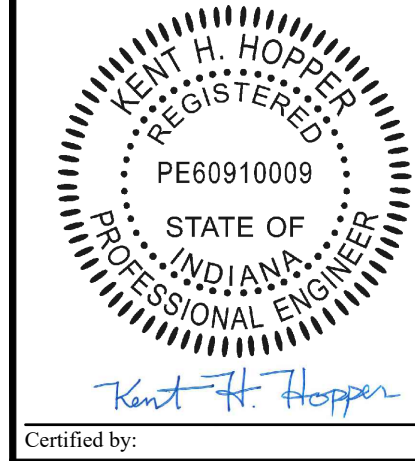


STATE OF INDIANA  
DEPARTMENT OF NATURAL RESOURCES  
**CLIFTY FALLS STATE PARK**  
**Electrical Distribution Installation at Campground**  
**Project Number: ENG2301725235**  
MADISON, INDIANA  
JEFFERSON COUNTY



TITLE/GENERAL INFORMATION SHEET

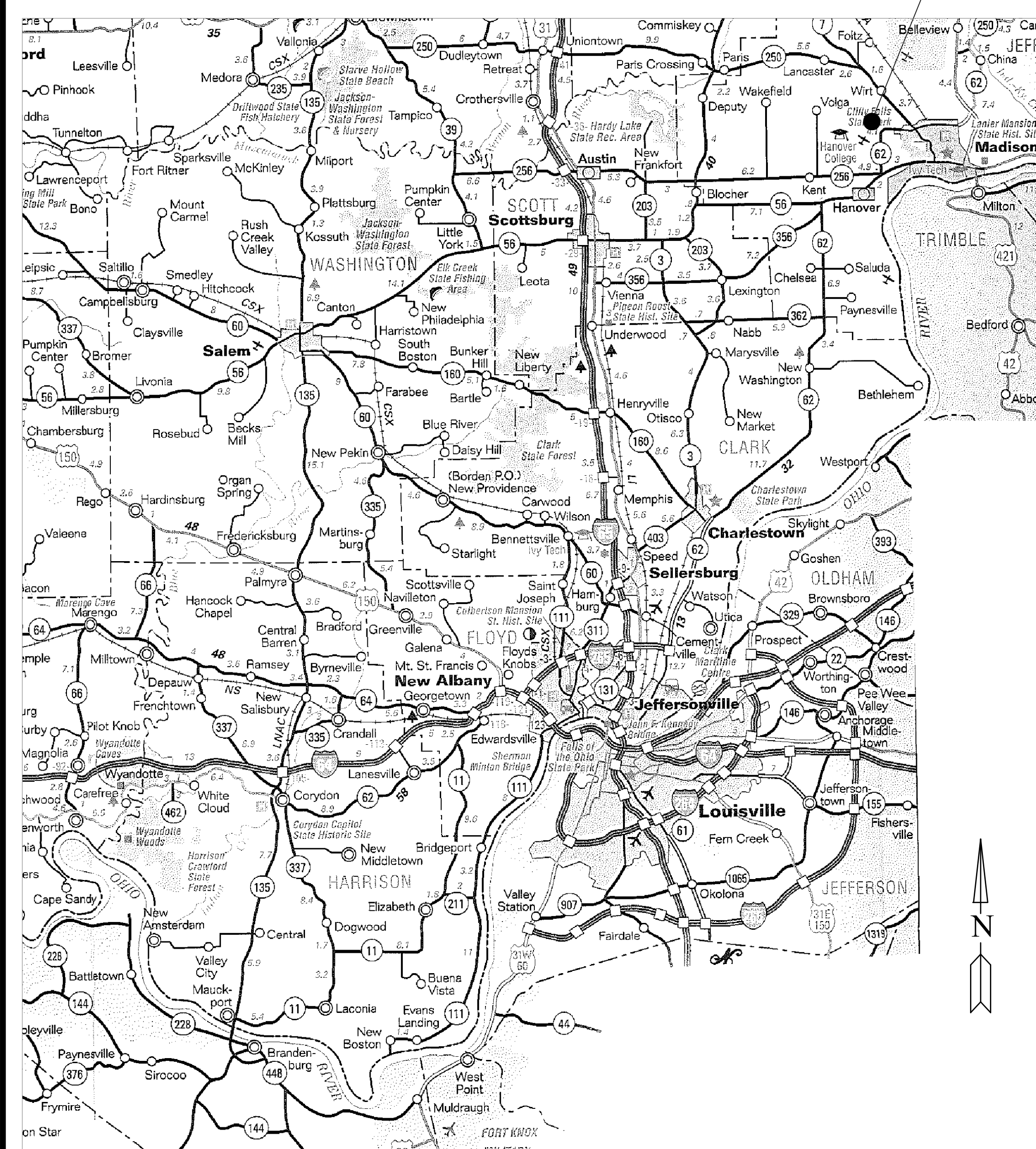
CLIFTY FALLS STATE PARK  
CAMPGROUND ELECTRIC  
DEPT. OF NATURAL RESOURCES  
1501 GREEN ROAD  
MADISON, IN 47250



STATE OF INDIANA  
DEPARTMENT OF NATURAL RESOURCES  
DIVISION OF FACILITIES,  
FLEET, ASSET MANAGEMENT  
AND ENGINEERING  
ROOM W399, INDIANA GOVERNMENT CENTER SOUTH  
402 WEST WASHINGTON STREET  
INDIANAPOLIS, INDIANA 46204  
TEL 317-232-6481

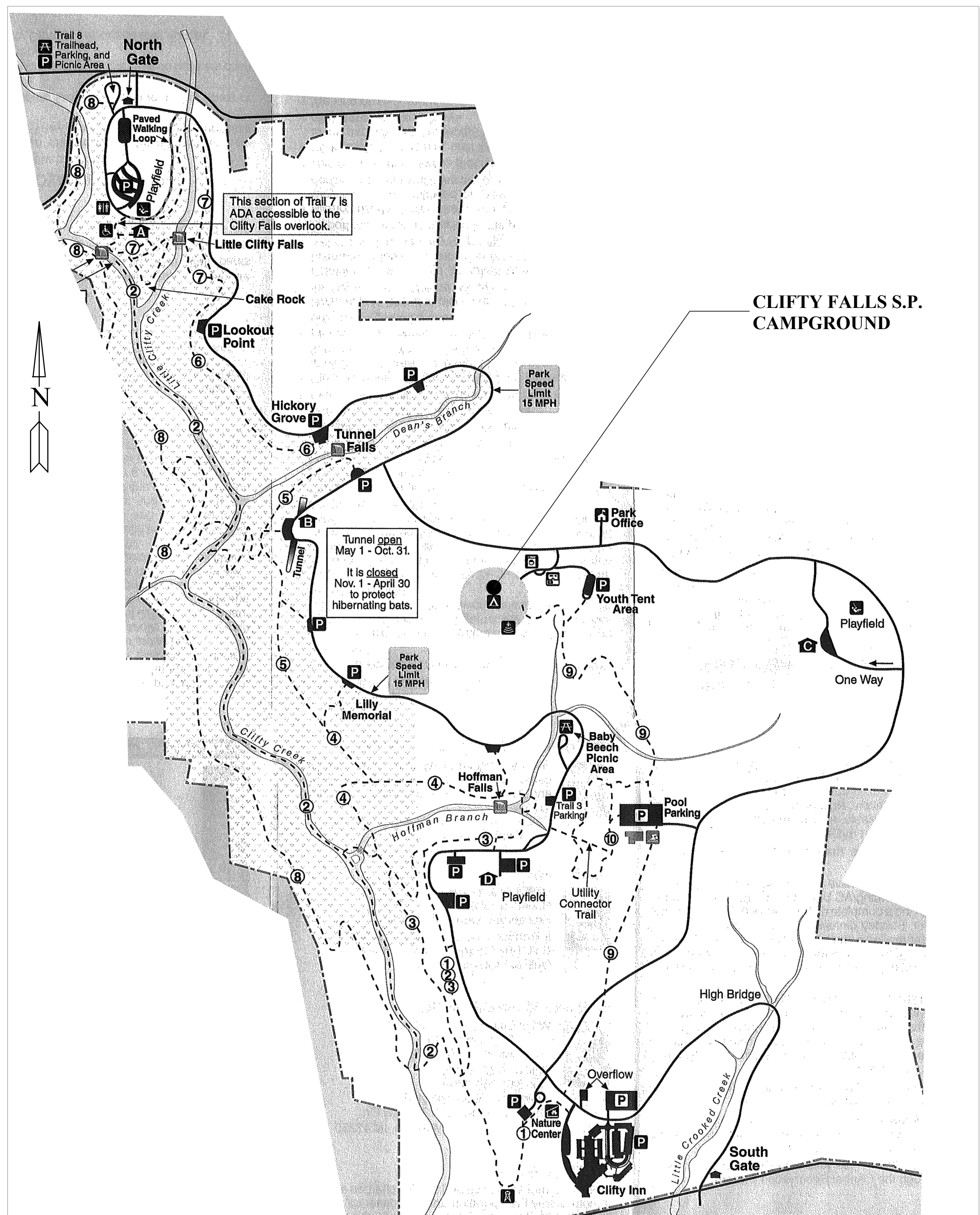
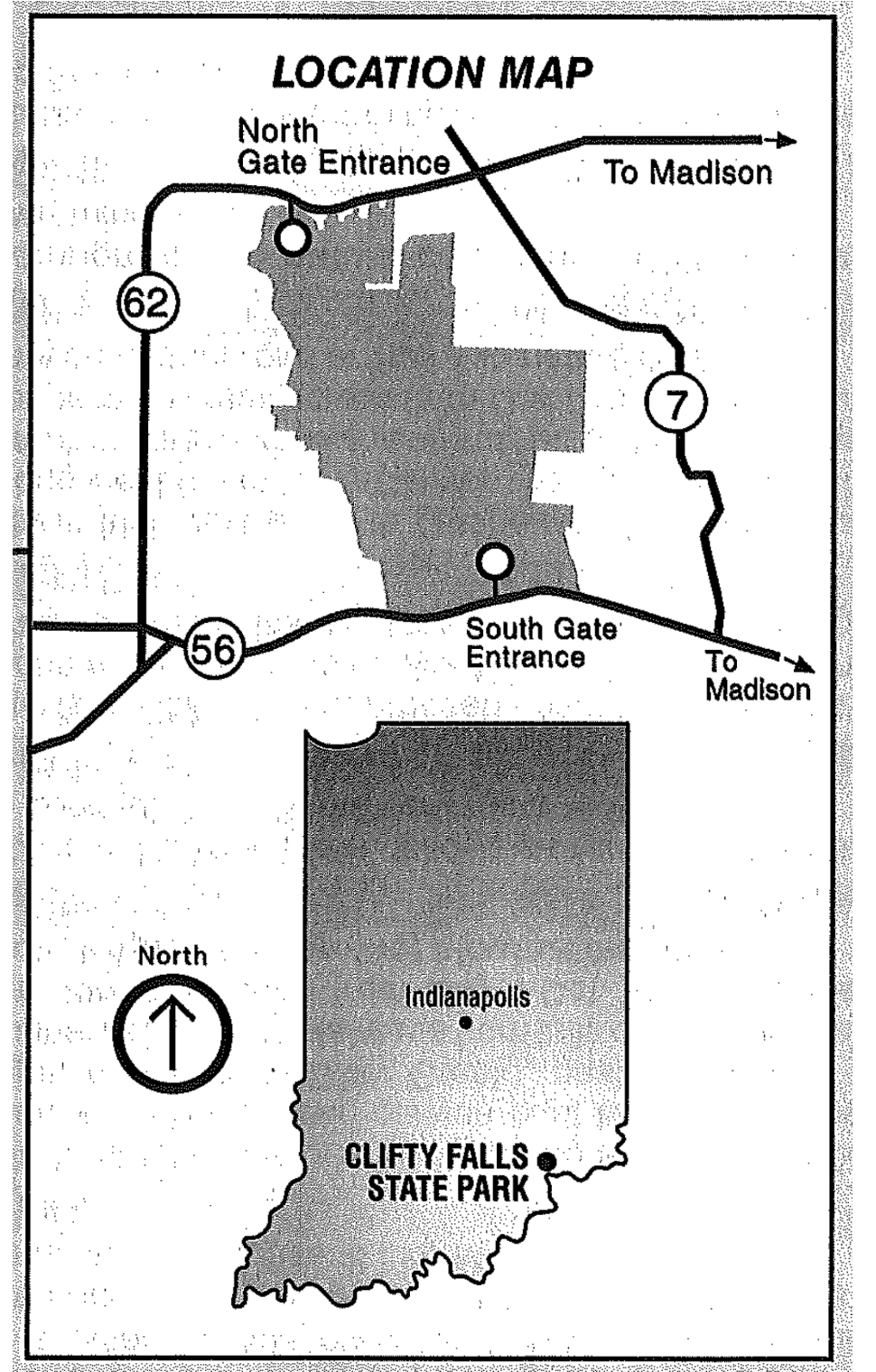
INDEX:

- TS-1 TITLE/GENERAL INFORMATION SHEET
- E-1 ELECTRICAL SITE PLAN
- E-2 CAMPGROUND ELECTRICAL DETAILS
- E-3 ELECTRICAL PANEL BOARD SCHEDULE
- F-1 CAMPSITE DETAILS
- F-2 PAVING PLANS



VICINITY MAP

PROJECT LOCATION



PROJECT LOCATION MAP

Revisions:	
Project Number:	ENG2301725235
Requisition Number:	
Designer:	KH
Drawing Date:	3-1-2024
Drafter:	DAK
Drawing Scale:	NO SCALE
DNR Approval:	
Client Approval:	
File Number:	4-120
Drawing Number:	TS-1
Sheet:	1 of 6



Certified by:

# ELECTRICAL SITE PLAN

**CLIFTY FALLS STATE PARK  
CAMPGROUND ELECTRIC**  
DEPARTMENT OF NATURAL RESOURCES  
1501 GREEN RAD  
MADISON, IN 47250



STATE OF INDIANA  
DEPARTMENT OF NATURAL RESOURCES  
**DIVISION OF FACILITIES,  
FLEET, ASSET MANAGEMENT  
AND ENGINEERING**  
ROOM W399, INDIANA GOVERNMENT CENTER SOUTH  
402 WEST WASHINGTON STREET  
INDIANAPOLIS, INDIANA 46204  
TEL: 317-232-0481

Revisions:

Project Number:  
ENG2301725235

Requisition Number:

Designer: KH Drawing Date: 3-1-2024

Drafter: DAK Drawing Scale: AS NOTED

DNR Approval:

Client Approval:

File Number: **4-120**

Drawing Number: **E1**

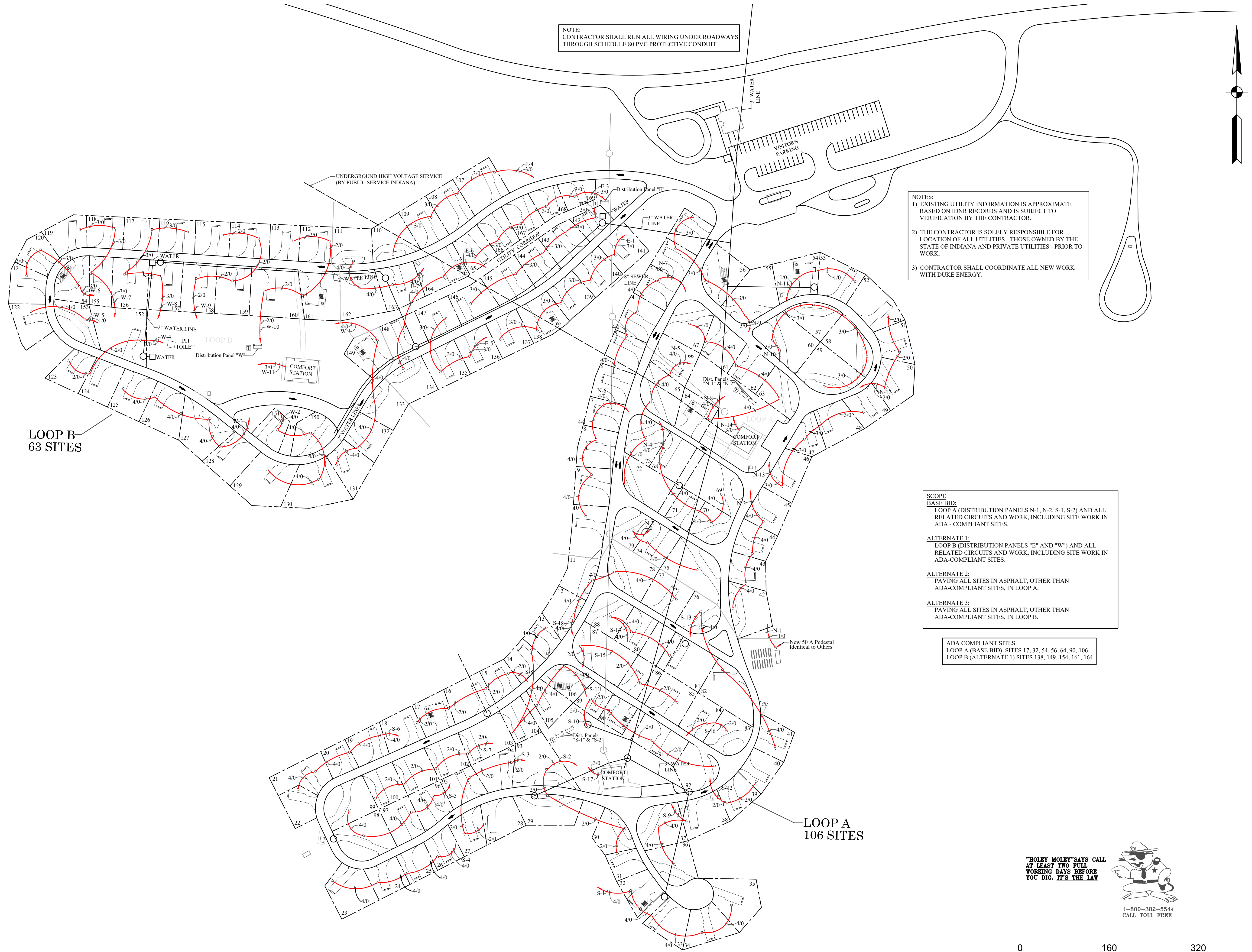
Sheet: 2 of 6

NOTE:  
CONTRACTOR SHALL RUN ALL WIRING UNDER ROADWAYS  
THROUGH SCHEDULE 80 PVC PROTECTIVE CONDUIT

NOTES:  
1) EXISTING UTILITY INFORMATION IS APPROXIMATE  
BASED ON IDNR RECORDS AND IS SUBJECT TO  
VERIFICATION BY THE CONTRACTOR.  
2) THE CONTRACTOR IS SOLELY RESPONSIBLE FOR  
LOCATION OF ALL UTILITIES - THOSE OWNED BY THE  
STATE OF INDIANA AND PRIVATE UTILITIES - PRIOR TO  
WORK.  
3) CONTRACTOR SHALL COORDINATE ALL NEW WORK  
WITH DUKE ENERGY.

SCOPE  
BASE BID:  
LOOP A (DISTRIBUTION PANELS N-1, N-2, S-1, S-2) AND ALL  
RELATED CIRCUITS AND WORK, INCLUDING SITE WORK IN  
ADA-COMPLIANT SITES.  
ALTERNATE 1:  
LOOP B (DISTRIBUTION PANELS "E" AND "W") AND ALL  
RELATED CIRCUITS AND WORK, INCLUDING SITE WORK IN  
ADA-COMPLIANT SITES.  
ALTERNATE 2:  
PAVING ALL SITES IN ASPHALT, OTHER THAN  
ADA-COMPLIANT SITES, IN LOOP A.  
ALTERNATE 3:  
PAVING ALL SITES IN ASPHALT, OTHER THAN  
ADA-COMPLIANT SITES, IN LOOP B.

ADA COMPLIANT SITES:  
LOOP A (BASE BID) SITES 17, 32, 54, 56, 64, 90, 106  
LOOP B (ALTERNATE 1) SITES 138, 149, 154, 161, 164



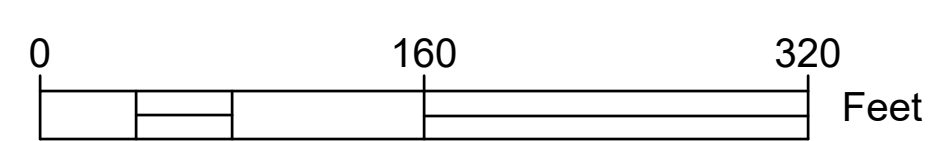
LOOP B  
63 SITES

LOOP A  
106 SITES

"HOLEY MOLEY" SAYS CALL  
AT LEAST TWO FULL  
WORKING DAYS BEFORE  
YOU DIG. IT'S THE LAW



1-800-382-5544  
CALL TOLL FREE



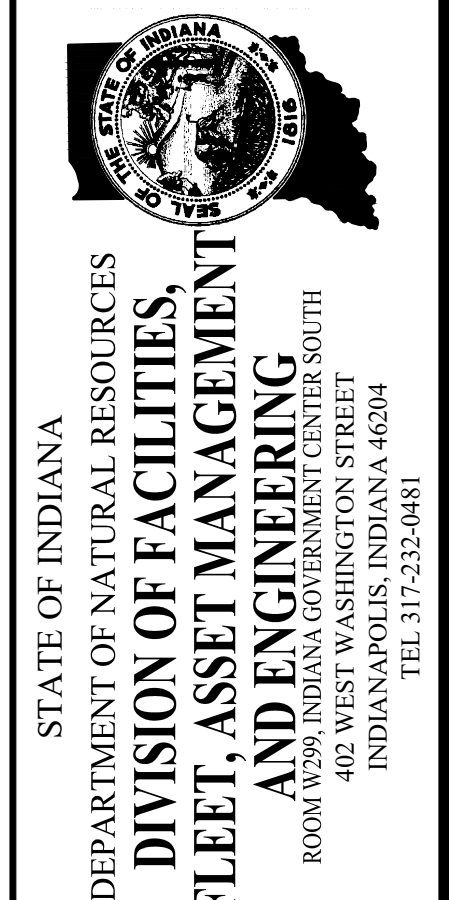
ELECTRICAL SITE PLAN  
SCALE 1"=80'

\\ms05.s01a\BDM - BDM - C:\Users\BDM\Documents\Projects\2024\4-120\4-120-01.dwg - CLIFTY FALLS ST. CAMPGROUND ELECTRIC.dwg

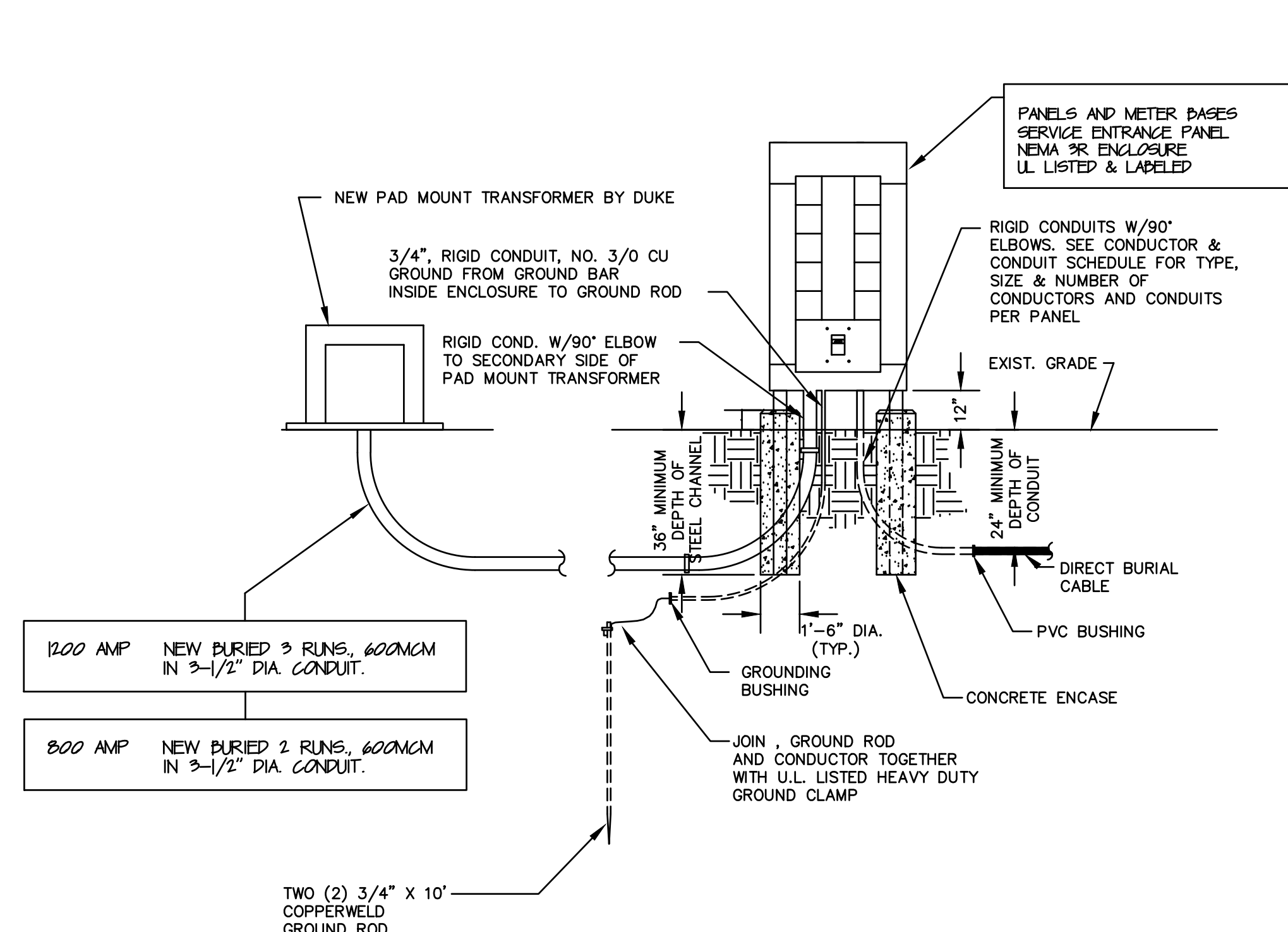


CAMPGROUND ELECTRICAL DETAILS

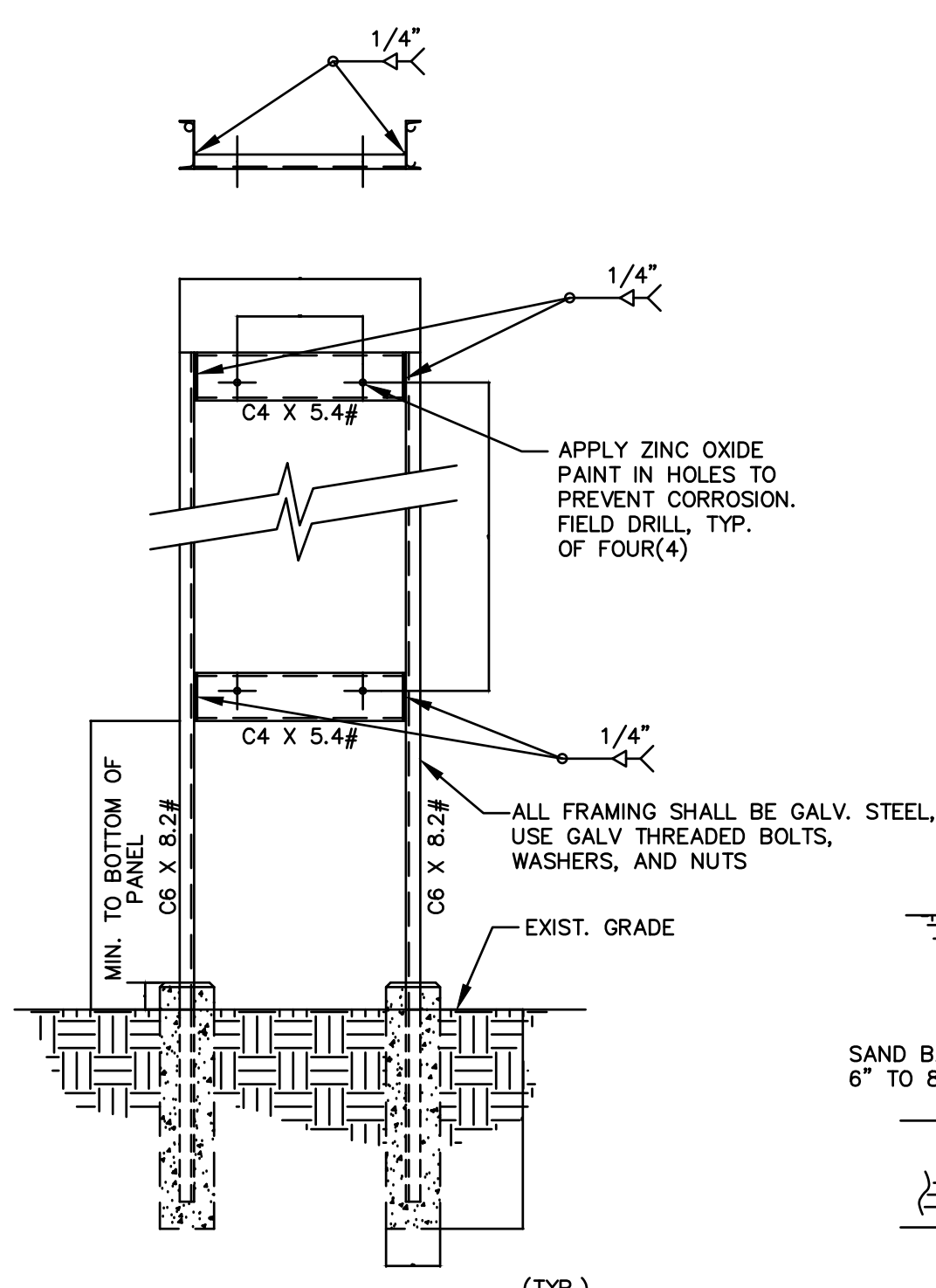
CLIFTY FALLS STATE PARK  
 CAMPGROUND ELECTRIC  
 DEPARTMENT OF NATURAL RESOURCES  
 1501 GREEN ROAD  
 MADISON, IN 47250



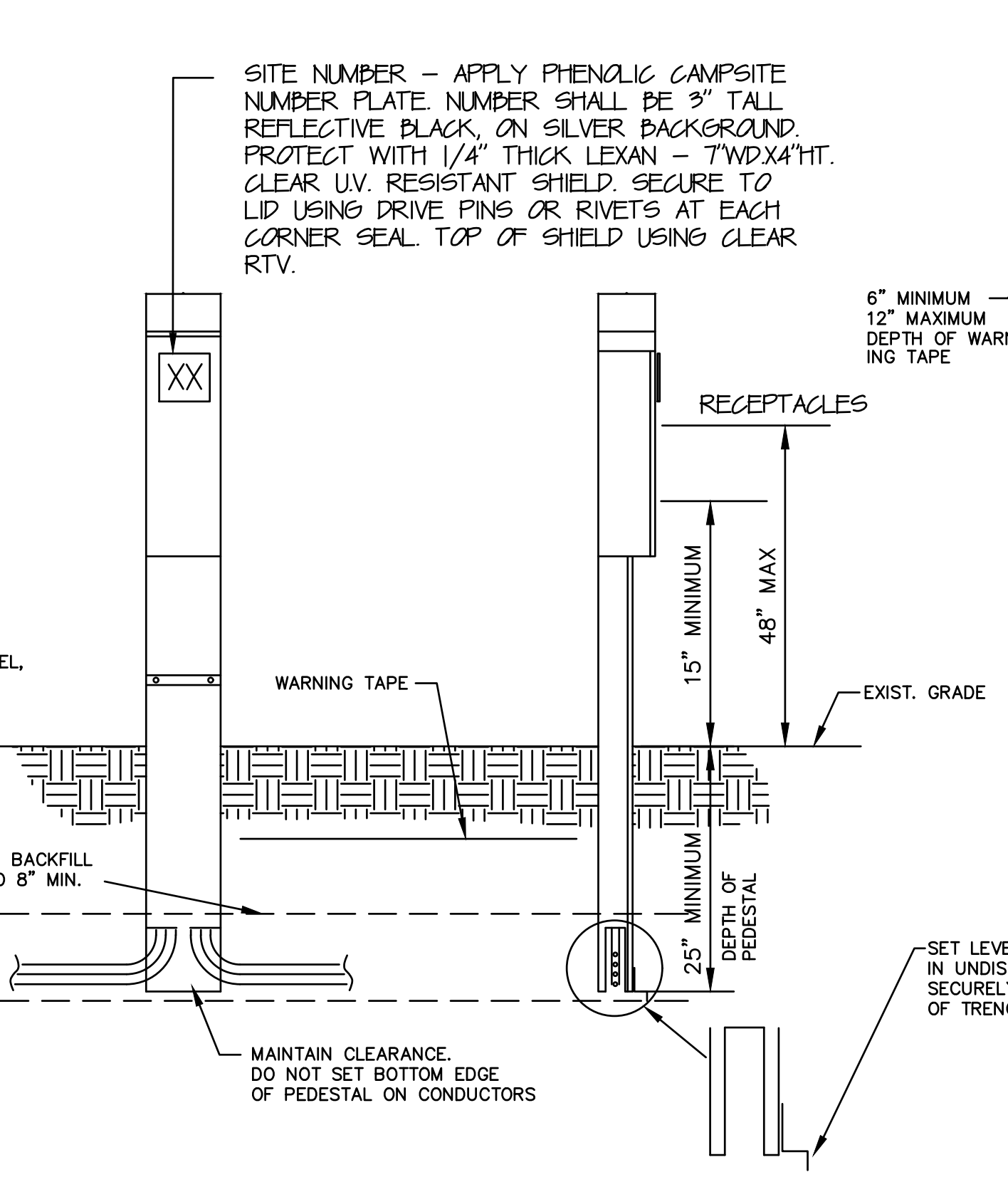
Project Number:	ENG2301725235
Requisition Number:	
Designer:	Drawing Date:
KH	3-1-2024
Drafter:	Drawing Scale:
DAK	AS NOTED
DNR Approval:	
Client Approval:	
File Number:	4-120
Drawing Number:	E-2
Sheet:	3 of 6



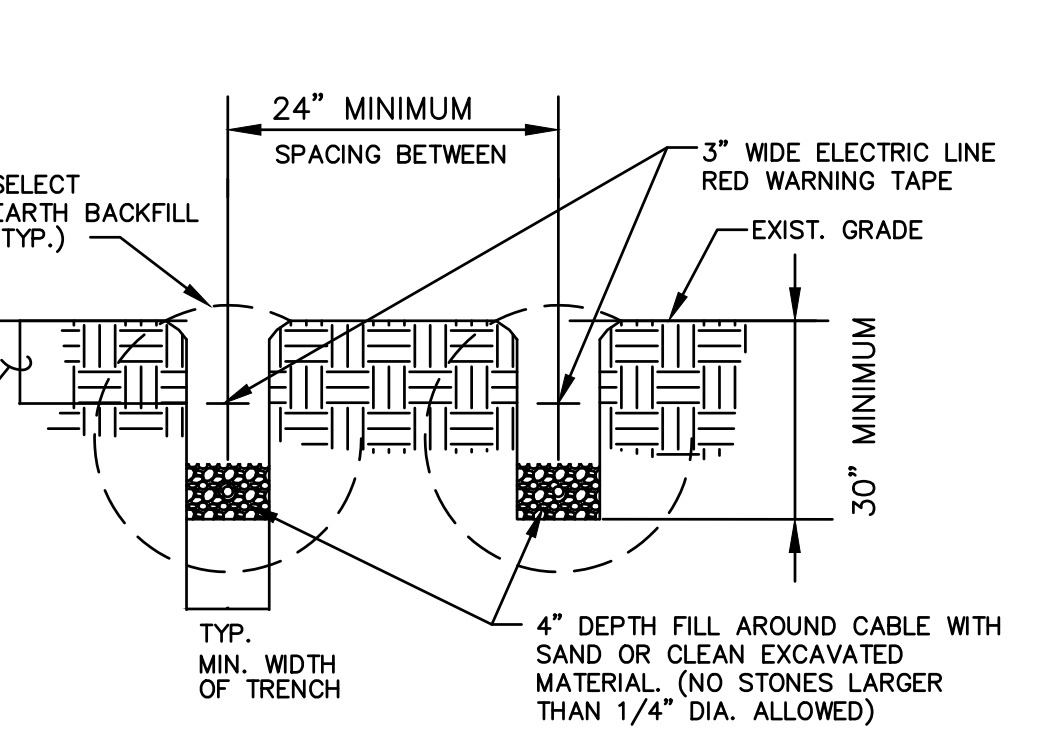
TRANSFORMER & DISTRIBUTION PANEL DETAILS  
 SCALE: NONE  
 IDNR STANDARD DETAIL - R. PETERSON



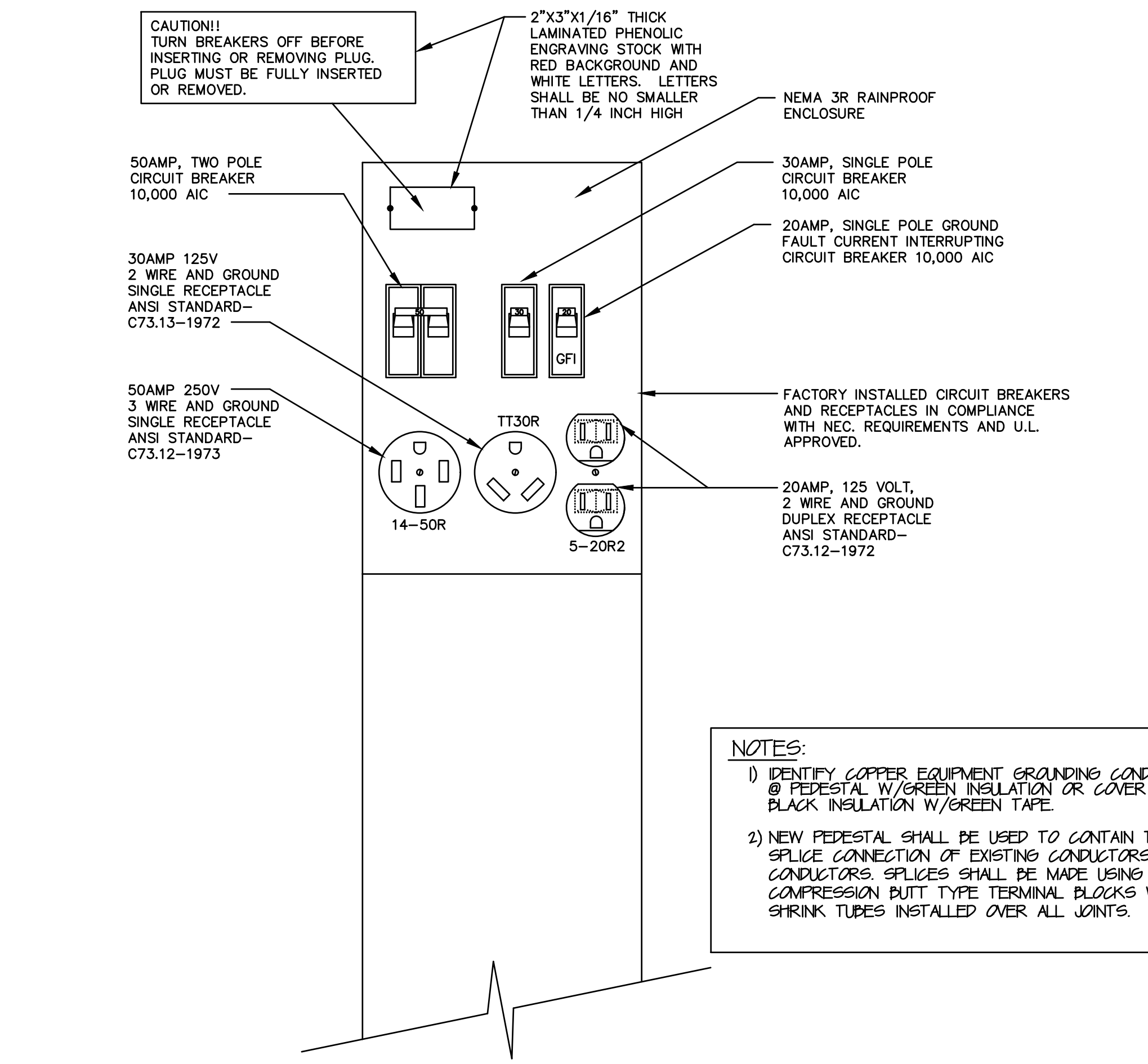
PANEL MOUNTING DETAIL  
 SCALE: NONE  
 IDNR STANDARD DETAIL - R. PETERSON



PEDESTAL RISER DETAIL  
 SCALE: NONE  
 IDNR STANDARD DETAIL - R. PETERSON



CONDUCTOR TRENCH DETAIL  
 SCALE: NONE  
 IDNR STANDARD DETAIL - R. PETERSON

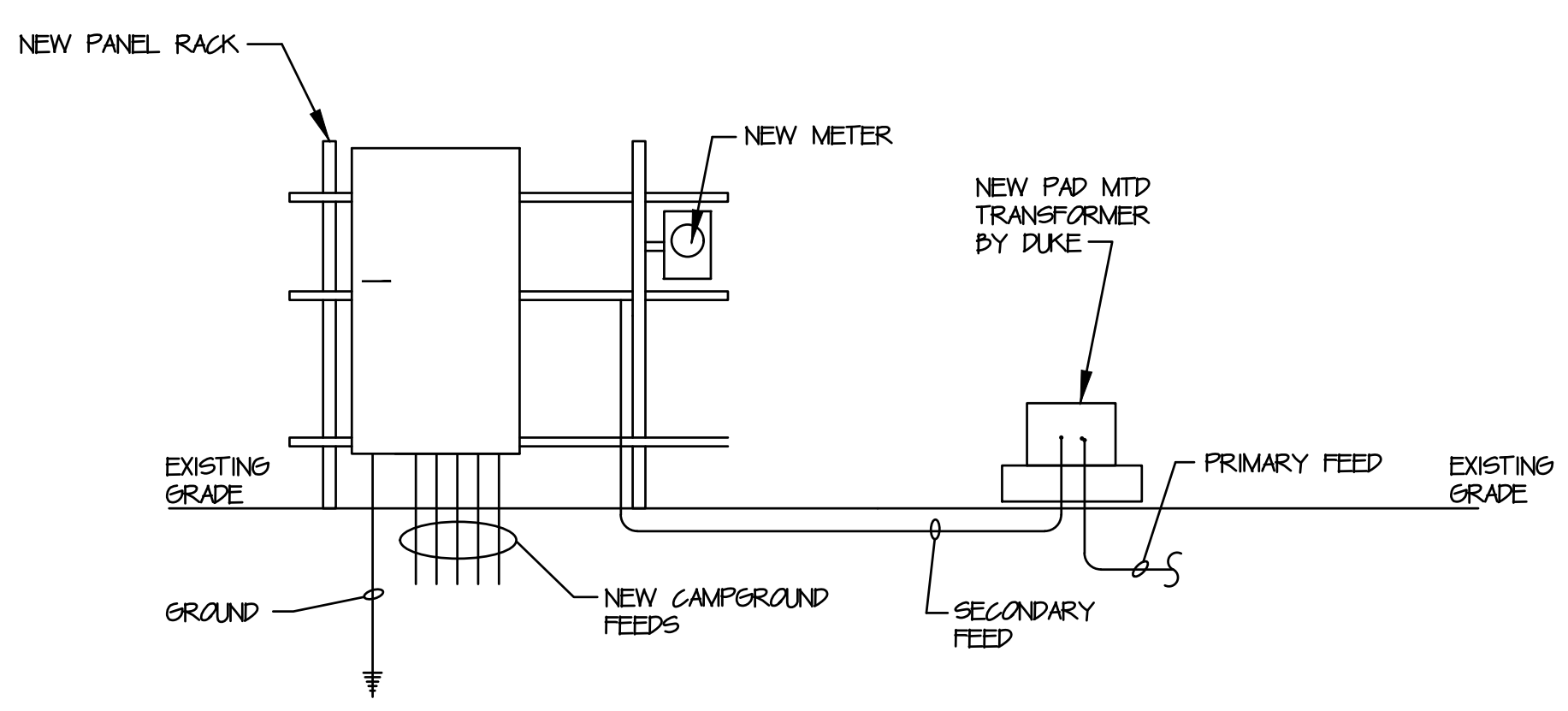


TYPE 2 PEDESTAL RISER WIRING DETAILS  
 SCALE: NONE  
 IDNR STANDARD DETAIL - R. PETERSON

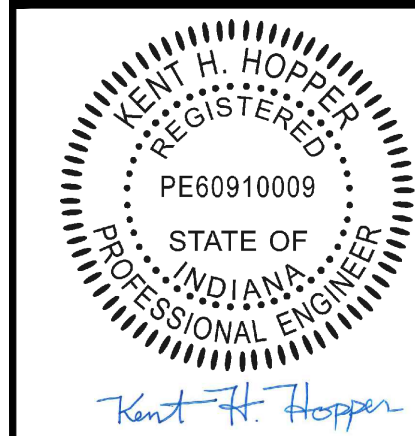
NOTE:  
 SITE #'S SHALL BE INSTALLED ON OUTSIDE COVER OF PEDESTALS - BLACK REFLECTIVE VINYL LETTERING (2") SILVER BACKGROUND.

NOTE: ALL CAMPSITE PEDESTAL LOCATIONS MUST CONFORM TO NEC 551-77

GENERAL NOTES  
 1. THE LOAD ON ALL BRANCH CIRCUITS TO THE 120 VOLT RECEPTACLES SHALL BE BALANCED EQUALLY BETWEEN THE TWO PHASE CONDUCTORS BY THE METHOD OF ALTERNATING THE PHASE WIRE LOADING AT EACH PEDESTAL.



NEW ELECTRICAL RISER DIAGRAM  
 NOT TO SCALE  
 IDNR STANDARD DETAIL - R. PETERSON



Certified by: *Kent H. Hopper*

ELECTRICAL  
PANEL BOARD  
SCHEDULE

CLIFTY FALLS STATE PARK  
CAMPGROUND ELECTRIC  
DEPARTMENT OF NATURAL RESOURCES  
1501 GREEN ROAD  
MADISON, IN 47250



STATE OF INDIANA  
DEPARTMENT OF NATURAL RESOURCES  
DIVISION OF FACILITIES,  
FLEET, ASSET MANAGEMENT  
AND ENGINEERING  
ROOM W399, INDIANA GOVERNMENT CENTER SOUTH  
402 WEST WASHINGTON STREET  
INDIANAPOLIS, INDIANA 46204  
TEL 317-232-0481

Revisions:

Project Number:  
ENG2301725235

Requisition Number:

Designer: KH Drawing Date: 3-1-2024

Drafter: DAK Drawing Scale: NONE

DNR Approval:

Client Approval:

File Number: 4-120

Drawing Number: E-3

Sheet 4 of 5

I:\05\_2024 - 0504m - 5\ACTIVE-PROJECTS\STATE PARKS\CLIFTY FALLS\ENG2301725235 Drawings\0504m - 5\Campground Electric.dwg

PANELBOARD "N-1" SCHEDULE - LOOP "A" (BASE BID)

CIRCUIT NUMBER	SPACE	BREAKER	NUMBER OF SITES	SITES SERVED	CONDUCTOR SIZE	CIRCUIT NUMBER	SPACE	BREAKER	NUMBER OF SITES	SITES SERVED	CONDUCTOR SIZE
N-1	1, 3	2P-50	NONE	AMPHITHEATER	1/0	N-2	2, 4	2P-125	3	74, 75, 79	4/0
N-3	5, 7	2P-150	4	42, 43, 44, 45	4/0	N-4	6, 8	2P-150	4	68, 69, 70, 71	4/0
N-5	9, 11	2P-150	4	65, 66, 72, 73	4/0	N-6	10, 12	2P-150	4	7, 8, 9, 10	4/0
N-7	13, 15	2P-150	4	3, 4, 5, 6	4/0	N-8	14, 16	2P-175	5	61, 62, 63, 65, 67	4/0

PANELBOARD "N-2" SCHEDULE - LOOP "A" (BASE BID)

CIRCUIT NUMBER	SPACE	BREAKER	NUMBER OF SITES	SITES SERVED	CONDUCTOR SIZE	CIRCUIT NUMBER	SPACE	BREAKER	NUMBER OF SITES	SITES SERVED	CONDUCTOR SIZE
N-9	17, 19	2P-150	4	1, 2, 55, 56	3/0	N-10	18, 20	2P-150	4	57, 58, 59, 60	3/0
N-11	21, 23	2P-100	2	53, 54	1/0	N-12	22, 24	2P-125	3	50, 51, 52	2/0
N-13	25, 27	2P-150	4	46, 47, 48, 49	3/0	N-14	26, 28	2P-200	NONE	COMFORT STATION	3/0

PANELBOARD "S-1" SCHEDULE - LOOP "A" (BASE BID)

CIRCUIT NUMBER	SPACE	BREAKER	NUMBER OF SITES	SITES SERVED	CONDUCTOR SIZE	CIRCUIT NUMBER	SPACE	BREAKER	NUMBER OF SITES	SITES SERVED	CONDUCTOR SIZE
S-1	1, 3	2P-150	4	32, 33, 34, 35	4/0	S-2	2, 4	2P-150	4	29, 30, 31, 93	2/0
S-3	5, 7	2P-150	4	27, 28, 94, 95	2/0	S-4	6, 8	2P-150	4	23, 24, 25, 26	4/0
S-5	9, 11	2P-150	4	96, 97, 98, 99	4/0	S-6	10, 12	2P-150	4	19, 20, 21, 22	4/0
S-7	13, 15	2P-150	4	100, 101, 102, 103	2/0	S-8	14, 16	2P-150	4	15, 16, 17, 18	2/0
S-9	17, 19	2P-125	3	36, 37, 38	4/0						

PANELBOARD "S-2" SCHEDULE - LOOP "A" (BASE BID)

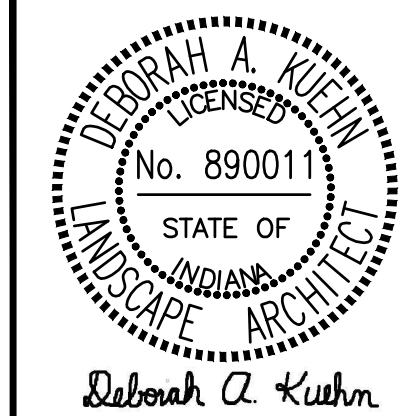
CIRCUIT NUMBER	SPACE	BREAKER	NUMBER OF SITES	SITES SERVED	CONDUCTOR SIZE	CIRCUIT NUMBER	SPACE	BREAKER	NUMBER OF SITES	SITES SERVED	CONDUCTOR SIZE
S-10	1, 3	2P-150	4	89, 90, 91, 92	2/0	S-11	2, 4	2P-175	5	13, 14, 104, 105, 106	4/0
S-12	5, 7	2P-100	2	39, 40	2/0	S-13	6, 8	2P-125	3	41, 76, 82	4/0
S-14	9, 11	2P-125	3	80, 81, 88	4/0	S-15	10, 12	2P-125	3	85, 86, 87	2/0
S-16	13, 15	2P-100	2	83, 84	2/0	S-17	14, 16	2P-200	NONE	COMFORT STATION	3/0
S-18	17, 19	2P-150	4	77, 78, 11, 12	4/0						

PANELBOARD "W" SCHEDULE - LOOP "B" (ALTERNATE #1)

CIRCUIT NUMBER	SPACE	BREAKER	NUMBER OF SITES	SITES SERVED	CONDUCTOR SIZE	CIRCUIT NUMBER	SPACE	BREAKER	NUMBER OF SITES	SITES SERVED	CONDUCTOR SIZE
W-1	1, 3	2P-150	4	131, 132, 133, 149	4/0	W-2	2, 4	2P-150	4	129, 130, 150, 151	4/0
W-3	5, 7	2P-150	4	125, 126, 127, 128	4/0	W-4	6, 8	2P-125	3	123, 124, 152	2/0
W-5	9, 11	2P-100	2	122, 153	1/0	W-6	10, 12	2P-125	3	120, 121, 154	3/0
W-7	13, 15	2P-125	3	118, 119, 155	3/0	W-8	14, 16	2P-150	4	116, 117, 156, 157	3/0
W-9	17, 19	2P-150	4	114, 115, 158, 159	2/0	W-10	18, 20	2P-150	4	112, 113, 160, 161	2/0
W-11	21, 23	2P-200	COMFORT STATION	NONE	3/0						

PANELBOARD "E" SCHEDULE - LOOP "B" (ALTERNATE #1)

CIRCUIT NUMBER	SPACE	BREAKER	NUMBER OF SITES	SITES SERVED	CONDUCTOR SIZE	CIRCUIT NUMBER	SPACE	BREAKER	NUMBER OF SITES	SITES SERVED	CONDUCTOR SIZE
E-1	1, 3	2P-175	5	137, 138, 139, 140, 141	3/0	E-2	2, 4	2P-175	5	142, 143, 144, 145, 146	3/0
E-3	5, 7	2P-175	5	165, 166, 167, 168, 169	3/0	E-4	6, 8	2P-150	4	107, 108, 109, 110	3/0
E-5	9, 11	2P-125	3	135, 136, 147	3/0	E-6	10, 12	2P-125	3	134, 148, 164	4/0
E-7	13, 15	2P-125	3	111, 162, 163	4/0						



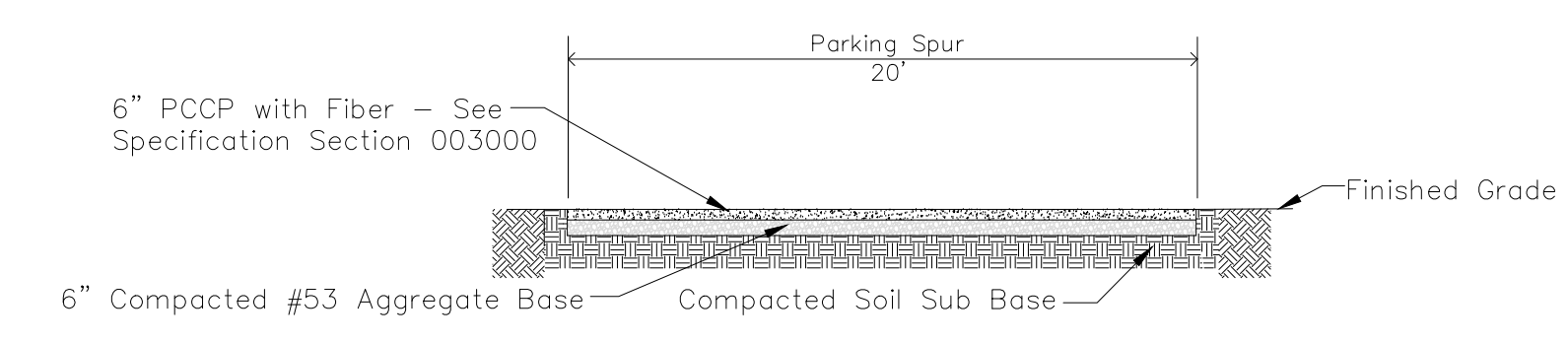
Certified by:  
Deborah A. Kuhn

CAMPSITE  
DETAILS

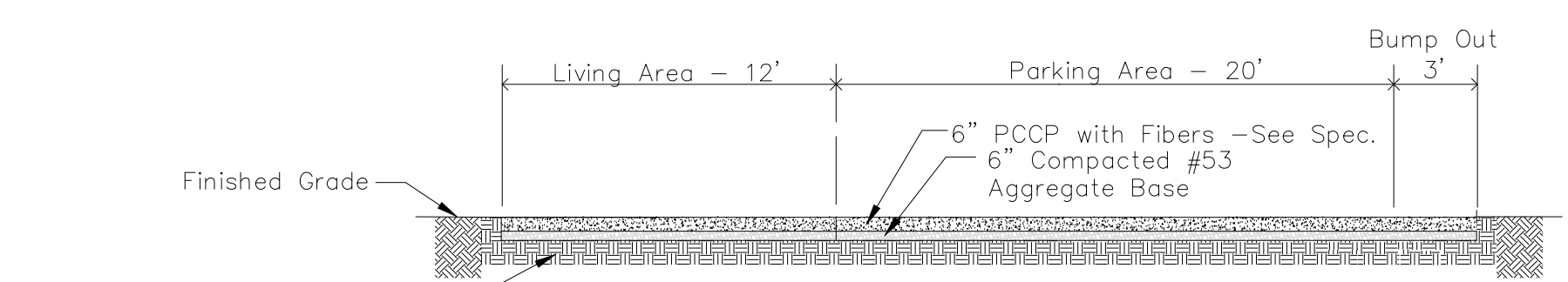
**CLIFTY FALLS STATE PARK**  
CAMPGROUND ELECTRIC  
DEPARTMENT OF NATURAL RESOURCES  
1501 GREEN ROAD  
MADISON, IN 47250



Project Number: <b>ENG2301725235</b>	
Requisition Number:	
Designer: DAK	Drawing Date: 3-1-2024
Drafter: DAK	Drawing Scale: AS NOTED
DNR Approval:	
Client Approval:	
File Number: <b>4-120</b>	
Drawing Number: <b>F-1</b>	
Sheet:	5 of 6

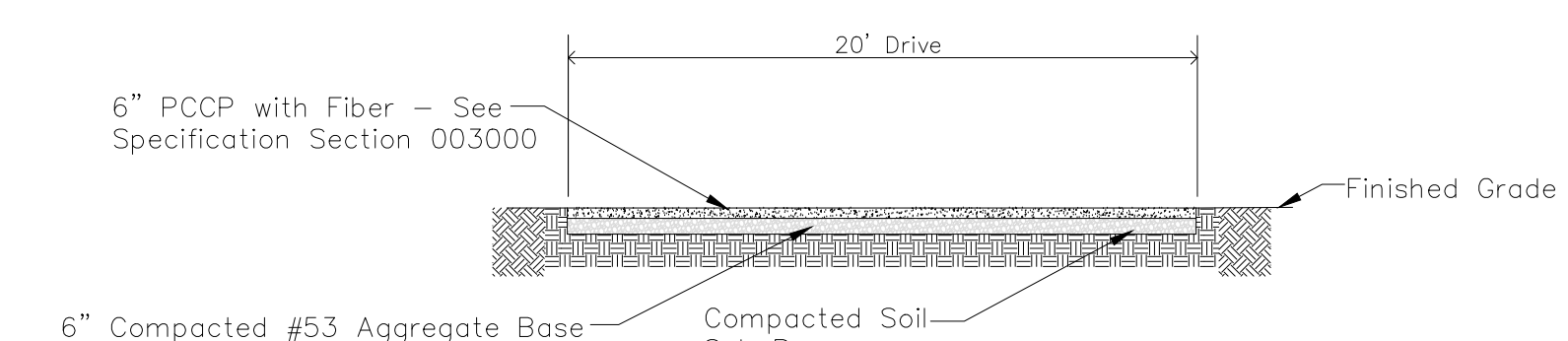


ADA SPUR CAMPSITE DRIVE - SECTION A-A NOT TO SCALE

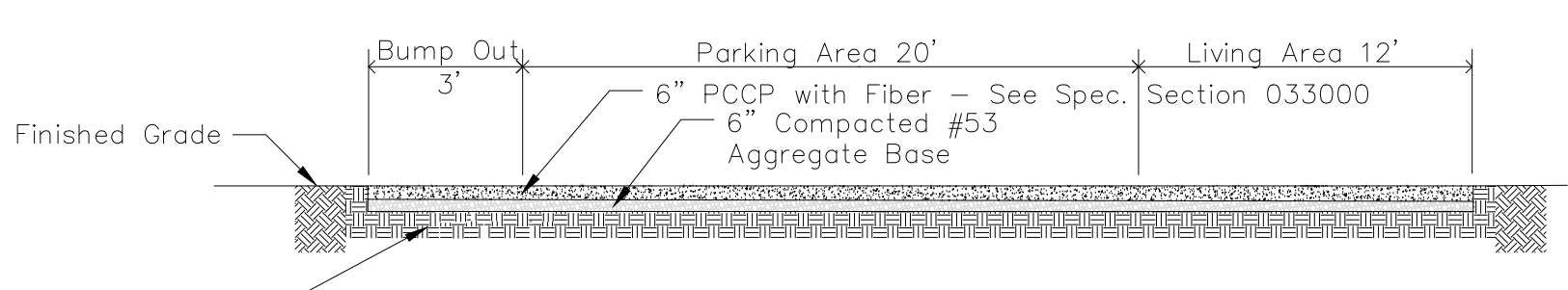


TYPICAL ADA SPUR CAMPSITE - SECTION B-B NOT TO SCALE

NOTES:  
PCCP - Portland Cement Concrete Pavement  
4,000 PSI with Fibers - See Specifications Section 003000

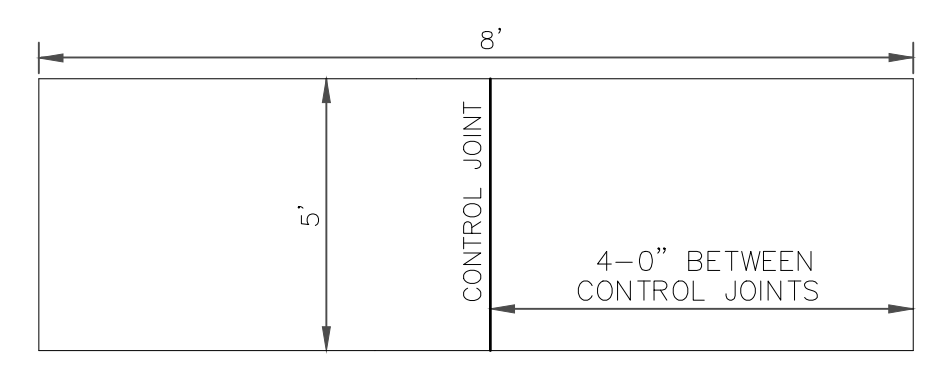


ADA PULL THRU DRIVE - SECTION C-C NOT TO SCALE

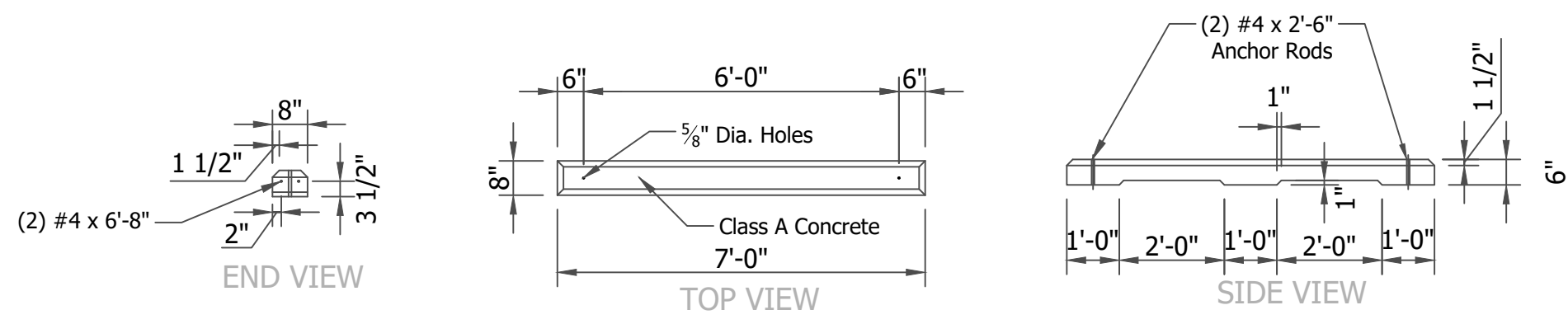


TYPICAL ADA PULL THRU CAMPSITE - SECTION D-D NOT TO SCALE

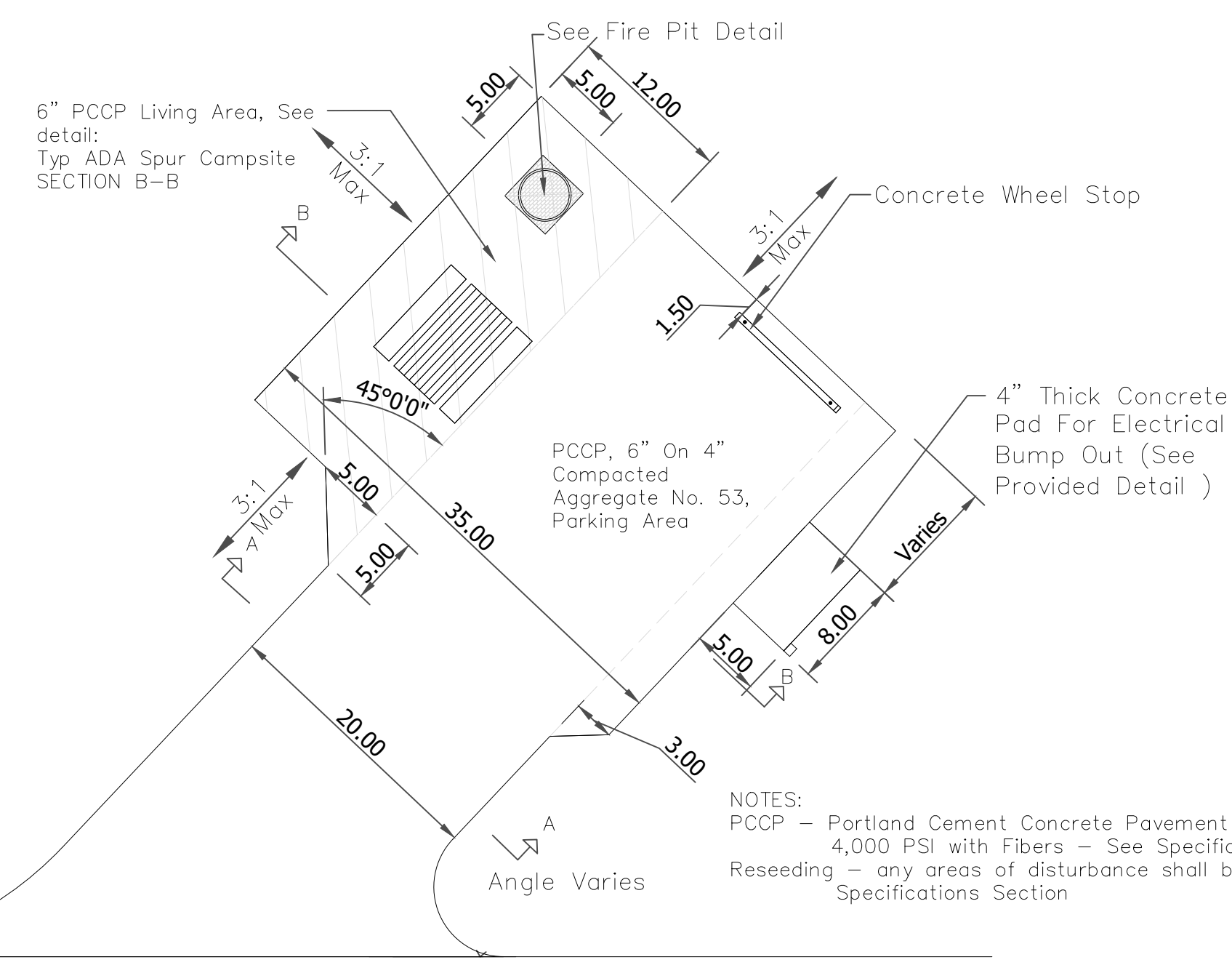
NOTES:  
PCCP - Portland Cement Concrete Pavement  
4,000 PSI with Fibers - See Specifications



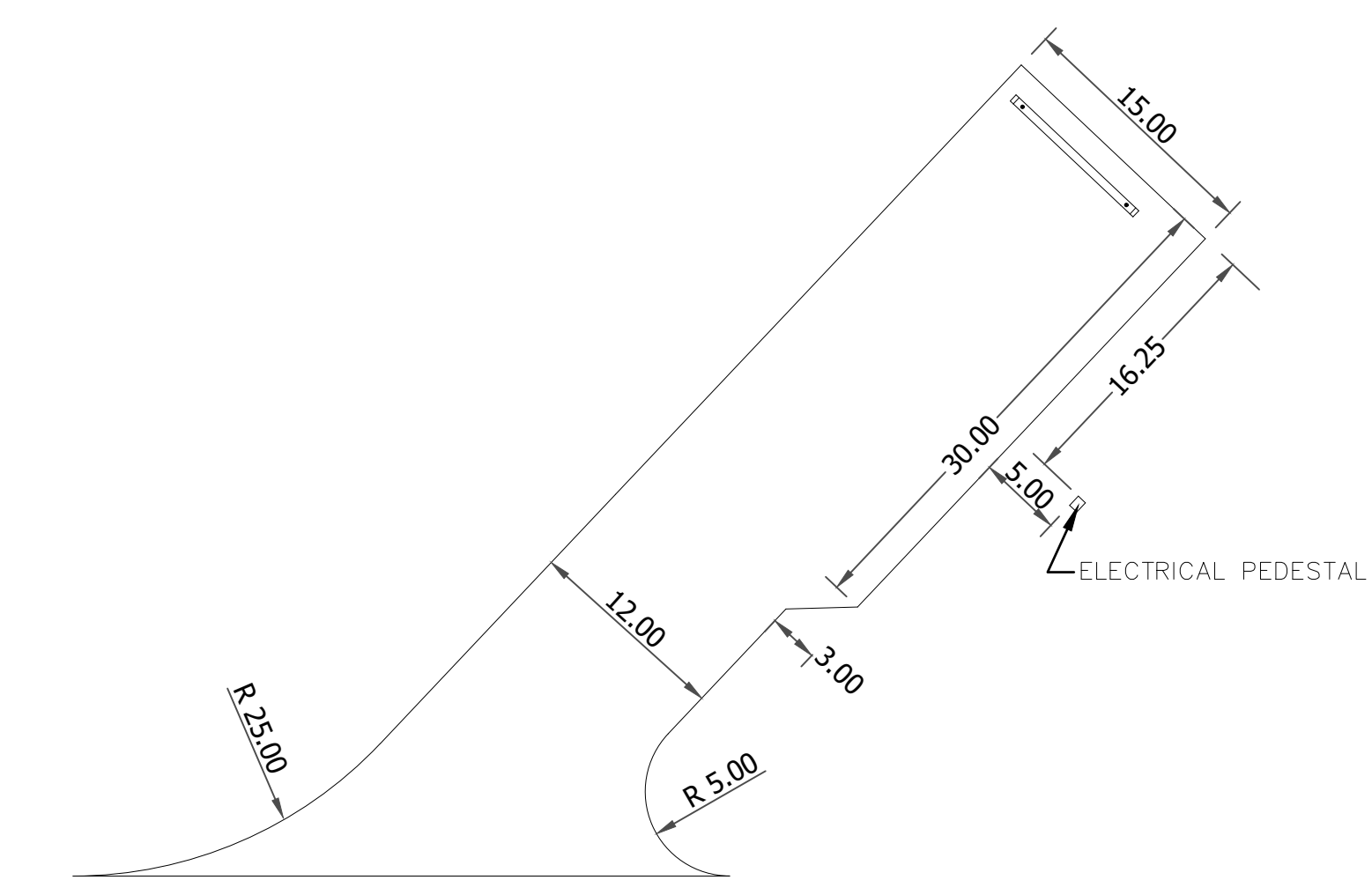
CONCRETE PAD SECTION NOT TO SCALE



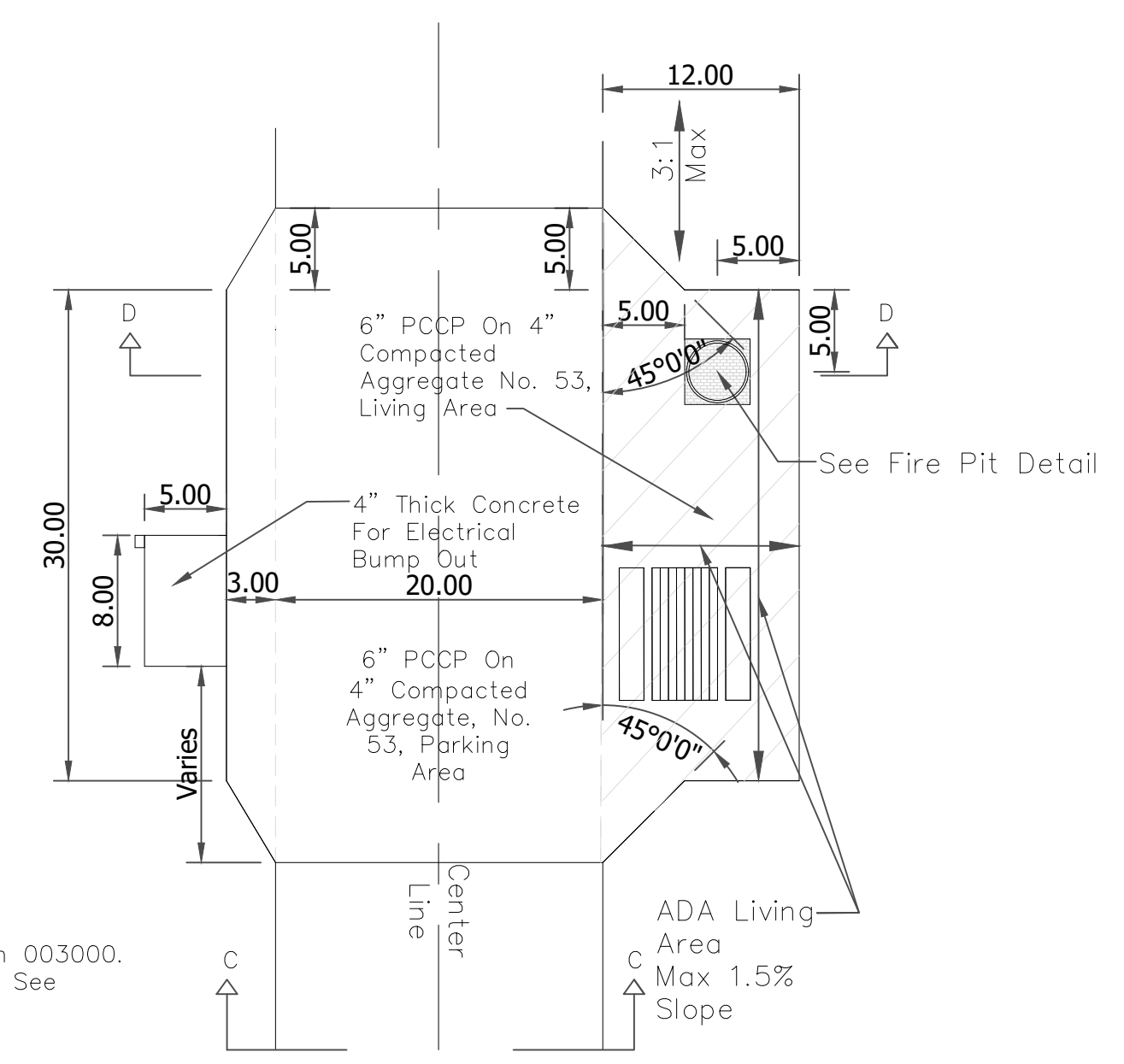
CONCRETE PARKING BUMPER NOT TO SCALE



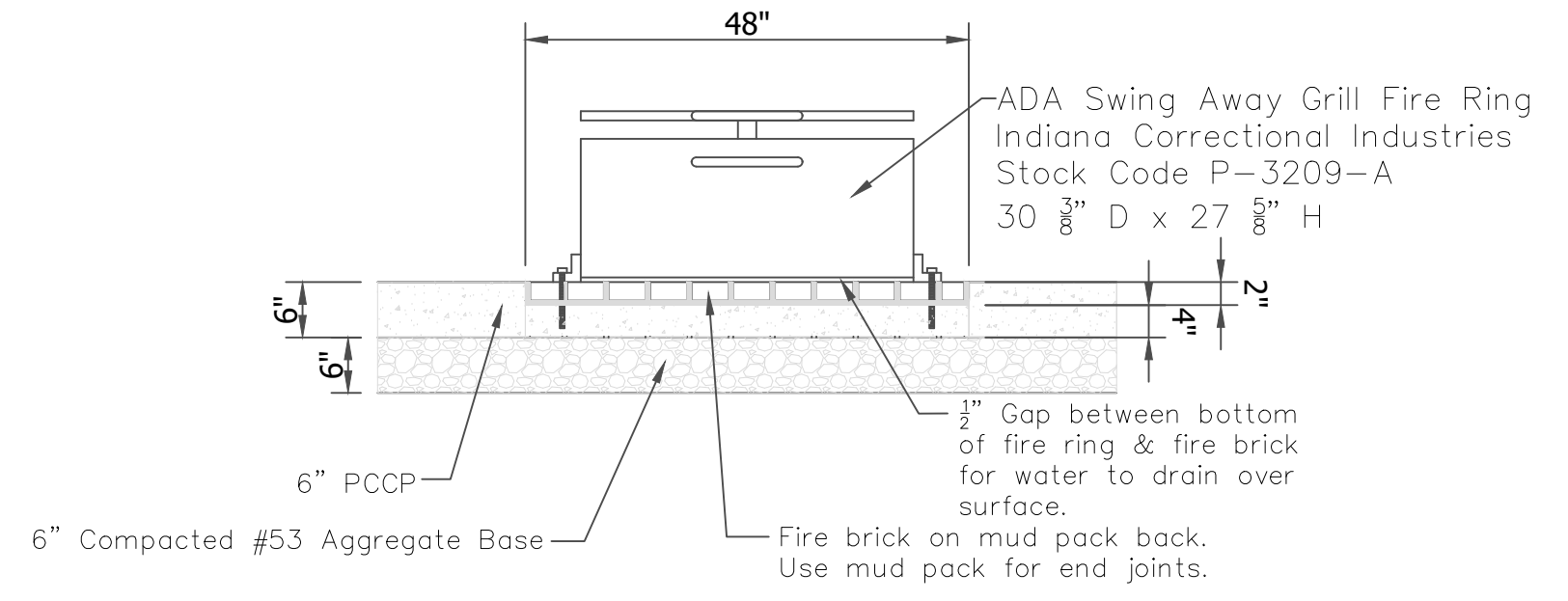
TYPICAL ADA SPUR CAMPSITE SCALE: 1" = 10'



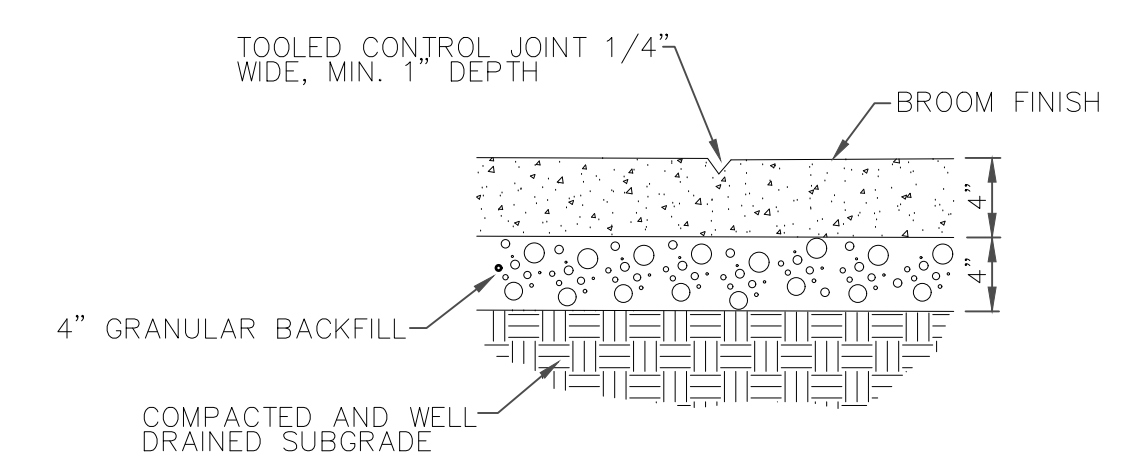
SPUR CAMPSITE DETAIL NOT TO SCALE



ADA TYPICAL PULL THRU SITE SCALE: 1" = 10'

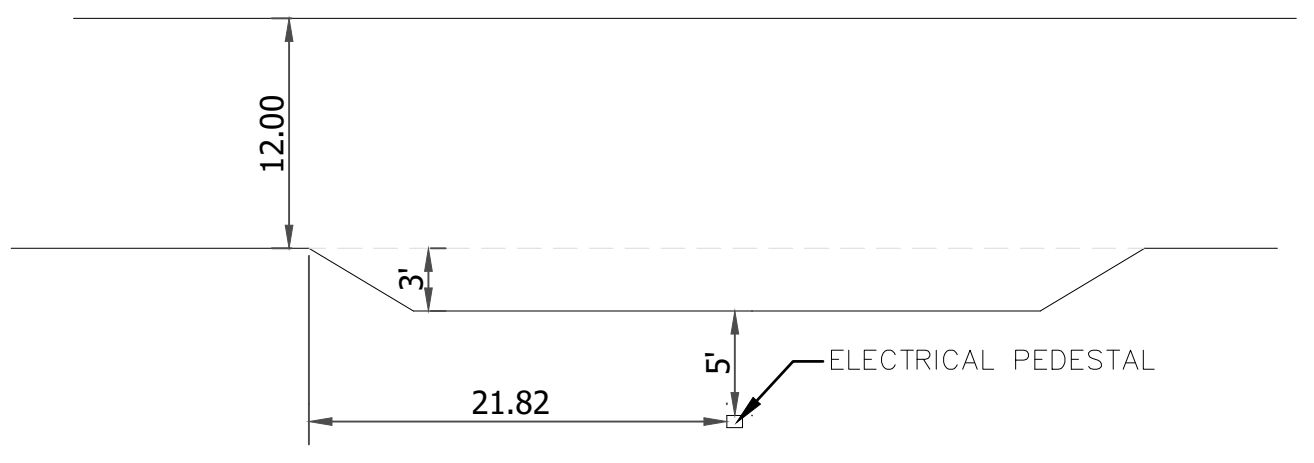


FIRE PIT DETAIL NOT TO SCALE



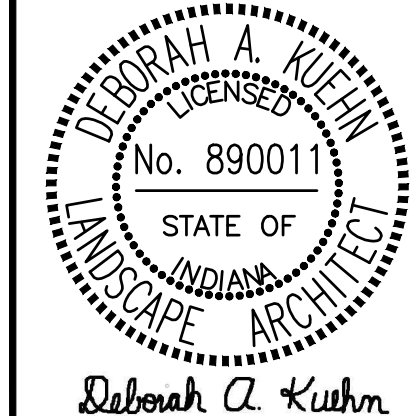
CONCRETE PAD DETAIL NOT TO SCALE

NOTES:  
1.) CONTROL JOINTS 4'-0" O.C. MAX (SEE PLANS FOR ANY VARIATIONS)



PULL THROUGH CAMPSITE DETAIL NOT TO SCALE

I:\PROJECTS\STATE PARKS\CLIFTY FALLS\ENG2301725235\Drawings\Campgrounds\ADA Campsite Details.dwg



Certified by: *Deborah A. Kuehn*

PAVING PLAN

**CLIFTY FALLS STATE PARK**  
**CAMPGROUND ELECTRIC**  
 DEPARTMENT OF NATURAL RESOURCES  
 1501 GREEN RAD  
 MADISON, IN 47250

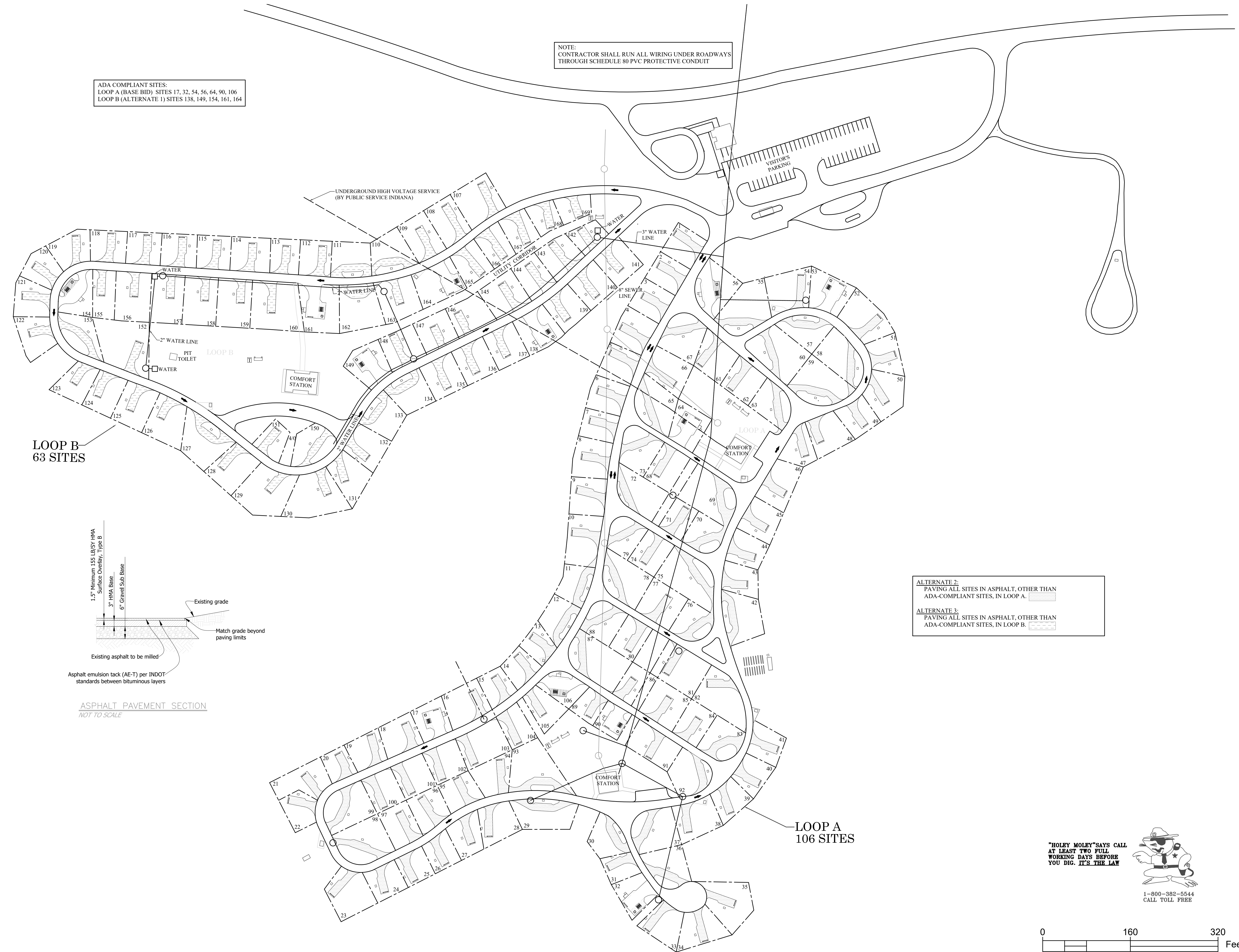


STATE OF INDIANA  
 DEPARTMENT OF NATURAL RESOURCES  
**DIVISION OF FACILITIES,**  
**FLEET, ASSET MANAGEMENT**  
**AND ENGINEERING**  
 ROOM W396, INDIANA GOVERNMENT CENTER SOUTH  
 402 WEST WASHINGTON STREET  
 INDIANAPOLIS, INDIANA 46204  
 TEL: 317-232-0481

Revisions:	
Project Number:	ENG2301725235
Requisition Number:	
Designer:	Drawing Date:
KH	3-1-2024
Drafter:	Drawing Scale:
DAK	AS NOTED
DNR Approval:	
Client Approval:	
File Number:	<b>4-120</b>
Drawing Number:	<b>F2</b>
Sheet:	6 of 6

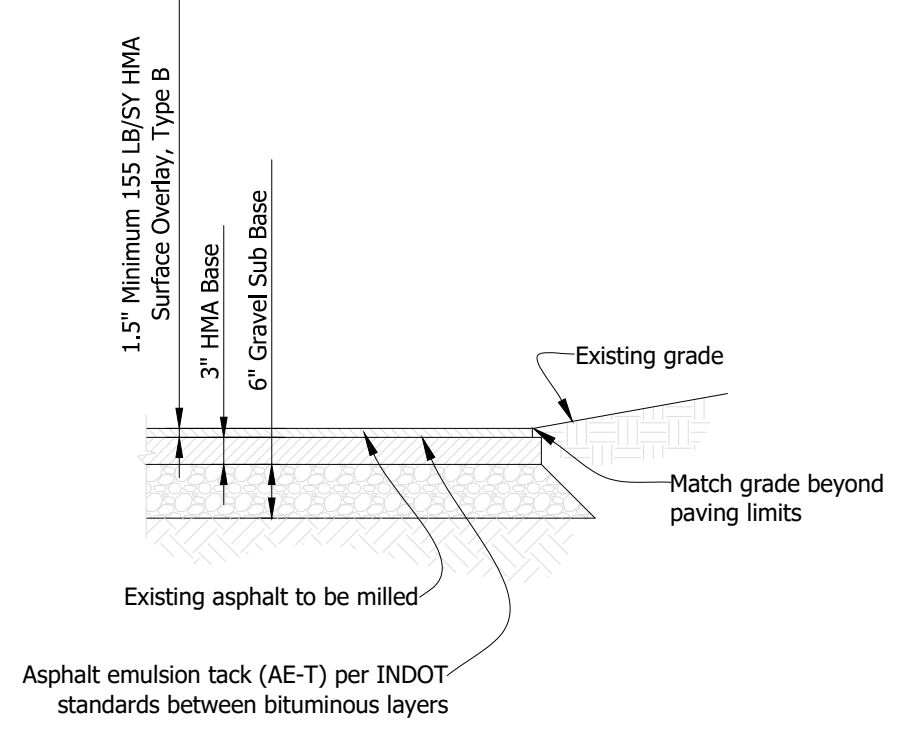
NOTE:  
 CONTRACTOR SHALL RUN ALL WIRING UNDER ROADWAYS  
 THROUGH SCHEDULE 80 PVC PROTECTIVE CONDUIT

ADA COMPLIANT SITES:  
 LOOP A (BASE BID) SITES 17, 32, 54, 56, 64, 90, 106  
 LOOP B (ALTERNATE 1) SITES 138, 149, 154, 161, 164



LOOP B  
 63 SITES

LOOP A  
 106 SITES



ASPHALT PAVEMENT SECTION  
 NOT TO SCALE

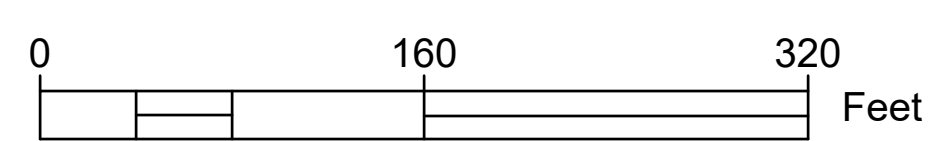
ALTERNATE 2:  
 PAVING ALL SITES IN ASPHALT, OTHER THAN  
 ADA-COMPLIANT SITES, IN LOOP A.

ALTERNATE 3:  
 PAVING ALL SITES IN ASPHALT, OTHER THAN  
 ADA-COMPLIANT SITES, IN LOOP B.

"HOLEY MOLEY" SAYS CALL  
 AT LEAST TWO FULL  
 WORKING DAYS BEFORE  
 YOU DIG. IT'S THE LAW



1-800-382-5544  
 CALL TOLL FREE



PAVING PLAN  
 SCALE 1"=80'

I:\05\_2024 - 03dm - 3\FACILITY-PROJECTS\STATE PARKS\CLIFTY FALLS\ENG2301725235\_Electrification\Campground\Campground-F.Clifty Falls S.P. Campground Electric.dwg