

Date: 2/6/2020

**Addendum No. 1
To
Specifications
For Project No. ENG2003724395**

**Description: Bank Stabilization to Protect Parking Lot
Location: Charlestown State Park**

FOR AGENCY: Department of Natural Resources

The information contained in this Addendum shall become a part of the basic plans and specifications the same as if original incorporated therein. The original plans and specifications shall remain in their entirety, except as modified by this Addendum. The items herein shall supersede information in the specifications and on the plans.

ITEM No. 1: Plan Sheets 1 and 10 have been updated as follows:

- **Plan Sheet 1 – Revisions Table has been added**

- **Plan Sheet 10 - Balled and burlapped trees have been removed from the plan set. Canopy Trees have been changed from 3 & 5 Gallon Stock Trees to 1"-2" Caliper Trees. Total Number of Canopy Trees to be planted has changed from 24 to 36. Bald Cypress has been updated to Red Maple. Total Number of Shrubs and Understory Trees has been updated from 12 to 18. Buttonbush has been updated to Pale Dogwood.**

Please substitute the attached sheets for like numbered sheets that now appear in your copy of the plan set.

ITEM No. 2: Include the attached Supplemental Unit Price sheet with your bid.

Unit price is an amount proposed by bidders as a price per unit of measurement for materials or services added to or deducted from the Contract Lump Sum by appropriate modification, if estimated

quantities of Work required by the Contract Documents are increased or decreased.

Unit prices include all necessary material, plus cost for delivery, installation, insurance, overhead, and profit.

ITEM No. 3: Pre-bid Meeting Agenda, Minutes, and attendee Sheet attached.

ITEM No. 4: Questions/Comments

Q: Is it required to Bond the road into the look-out areas as well as the existing parking lot?

A: Per Specification 1.14: Any damages to the existing facilities, roads, laws, driveways, or other State-owned property caused by the contractor shall be repaired by the Contractor at his/her expense and in a manner and schedule approved by the Owner.

Q: There seems to be a need for borrow material to construct the project. Is there a borrow area on site?

A: No. Fill shall be per the geotechnical guidelines.

Q: Is it possible to quote a material in place of the subbase currently bid on the project?

A: See ITEM No. 5 for an approved material substitution.

Q: It appears the existing conditions have changed since the plans were produced. How will additional quantities be paid for?

A: Lump Sum bids shall be based on the bidding documents. Any substantiated changes in site conditions from the bidding documents will be paid from a Supplemental Unit Price provided with the bid. These unit prices will only be used if there are substantiated changes and not for quantities in the lump sum bid amount. See Item 2.

Q: Are benches required to be installed per the dimensions/locations on cross section sheets?

A: The contractor will adjust the benching to field conditions as necessary.

Q: Is the 24" filter tube to be installed below the OHWM?

A: The contractor is to install the filter tube above the water level at the time of construction and adjust it as field conditions change.

ITEM No. 5: Approved Material Substitution Gradation Analysis

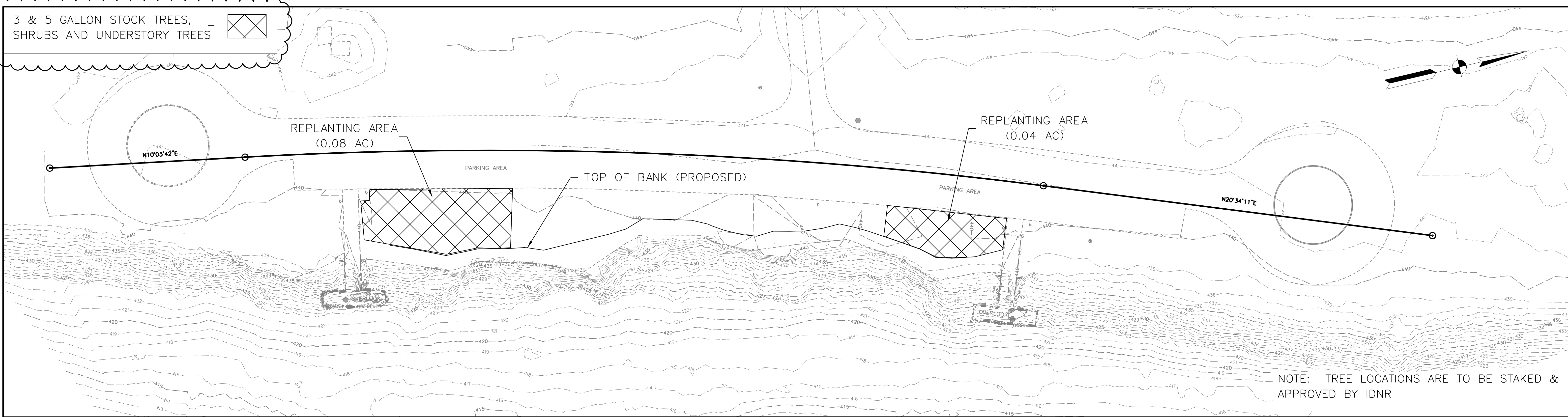
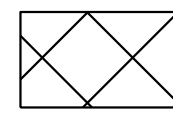
The attached gradation analysis is of a material that has been approved for the substitution of the #2 Stone and #53 Stone (50/50 Blend) subbase as shown in the plans. All Submittals, Quality Assurance, Placement, and Tolerances will conform to those set out in Section 31 05 16 of the specifications.

END OF ADDENDUM

State Form 21208R4

DAPW-118

3 & 5 GALLON STOCK TREES,
SHRUBS AND UNDERSTORY TREES



NOTE: TREE LOCATIONS ARE TO BE STAKED & APPROVED BY IDNR

THIS PROJECT CONSISTS OF REPLANTING 0.12 AC OF WOODY VEGETATION
A. WOODY VEGETATION

IN ADDITION TO THE TREES SHOWN ABOVE THE FOLLOWING WILL BE PLANTED IN THE REPLANTING AREA SHOWN AND WITHIN THE FOLLOWING GUIDELINES:

CANOPY TREES-1"-2" CALIPER	SHRUBS AND UNDERSTORY TREES
6 -BUR OAK (FAC)	3 -PERSIMMON (FAC)
6 -SHELLBARK HICKORY (FACW)	3 -INDIGO BUSH (FACW)
6 -RED MAPLE (FAC)	3 -PALE DOGWOOD (FACW)
6 -SWAMP WHITE OAK (FACW)	3 -ROUGHLEAF DOGWOOD (FAC)
6 -SWAMP CHESTNUT OAK (FACW)	3 -BLACK CHOKEBERRY (FACW)
6 -AMERICAN SYCAMORE (FACW)	3 -AMERICAN HORNBEAM (FAC)

TREES AND SHRUBS SHOULD BE PLANTED IN A RANDOM MANNER (I.E. NOT IN CLUMPS OF THE SAME SPECIES) WITH REGARD TO SPECIES COMPOSITION, OBSERVING THAT SPECIES ARE ALSO PLANTED ACCORDING TO THEIR WETLAND INDICATOR STATUS, TO SIMULATE NATURAL STOCKING CONDITIONS

ALL PLANTS AND SEED WILL BE OBTAINED FROM NURSERIES RUN BY INDIANA DNR OR COMMERCIAL SOURCES WITHIN AMERICAN NATIONAL STANDARDS INSTITUTE (ANSI) PLANT HARDINESS ZONES 4, 5, OR 6.

ALL PLANT MATERIAL WILL BE KEPT MOIST DURING TRANSPORTATION AND STORAGE.

PLANT MATERIAL WILL NOT BE SUBJECTED TO FREEZING, DRYING, OR EXCESSIVE WARMING.

ONLY THE NUMBER OF SAPLINGS THAT CAN REASONABLY BE PLANTED DURING A SINGLE DAY MAY BE REMOVED FROM STORAGE. THEY SHALL BE KEPT MOIST AT ALL TIMES.

TREES SHALL BE PLANTED DURING THE PERIOD FROM SEPTEMBER 15 TO DECEMBER 15 OR UNTIL THE GROUND HAS FROZEN OR AFTER MARCH 1 OR WHEN THE FROST LEAVES THE GROUND IN SPRING TO JUNE 1.

TREES SHALL BE PLANTED IN ACCORDANCE WITH SOUND HORTICULTURAL PRACTICES, INCLUDING PROPER PLANTING DEPTH AND SOIL COMPACTION FOLLOWING PLANTING.

TREES SHALL BE PLANTED SO THE ROOT COLLAR IS NO DEEPER THAN 1/2 INCH BELOW THE GROUND SURFACE. ROOTS WILL NOT BE FORCED INTO AN IMPROPER PLANTING HOLE, WHICH WOULD RESTRICT THEIR ABILITY TO GROW AND SUPPORT THE SAPLINGS THEREBY REDUCING THE OVERALL SURVIVAL RATE.

ALL PLANTING SHOULD BE IN ACCORDANCE WITH INDOT SPECIFICATIONS SECTION 622 - PLANTING TREES, SHRUBS, AND VINES.

THE PLANTING AREA SHALL BE MOWED TO A HEIGHT OF 6 INCHES OR LESS AS NECESSARY TO PROVIDE A SUITABLE PLANTING AREA GENERALLY FREE OF VEGETATIVE COMPETITION NO LONGER THAN TEN DAYS BEFORE THE TREES ARE PLANTED.

B. PLANT SPACING

15 FT APART FOR BALLED AND BURLAPPED TREES OR 194 STEMS PER ACRE. AVOID A PLANTATION GRID IF AT ALL POSSIBLE.

SHRUBS ARE TO BE PLANTED BETWEEN EVERY OTHER CANOPY TREE AND THEIR SPECIES ARE MIXED.

C. HERBACEOUS VEGETATION - TO BE PLANTED BETWEEN OVERLOOKS

THE FOLLOWING SEED MIX WILL BE USED TO ESTABLISH HERBACEOUS VEGETATION WITHIN THE 0.12 AC AS SHOWN ON THIS SHEET:

Common Name	Scientific Name	Size / Class	Indicator	Ounces/Acre	% of plants
Honewort	<i>Cryptotaenia canadensis</i>	wildflower	FAC	6	6.7%
White Awns	<i>Geum canadense</i>	wildflower	FAC	6	6.7%
Canada Wild Rye	<i>Elymus canadensis</i>	grass	FAC-	16	17.8%
Fatue Sunflower	<i>Helopsis helianthoides</i>	wildflower	FAC-	6	6.7%
Brown-Eyed Susan	<i>Rudbeckia triloba</i>	wildflower	FAC-	6	6.7%
Wild or Streambank Chenil	<i>Chaerophyllum procumbens</i>	wildflower	FAC+	6	6.7%
Switch Grass	<i>Panicum virgatum</i>	grass	FAC+	12	13.3%
Henry Sweet-Cicely	<i>Osmorhiza cleytorii</i>	wildflower	FACU	6	6.7%
Wild Blue Phlox	<i>Phlox divaricata</i>	wildflower	FACU	6	6.7%
Virginia Wild Rye	<i>Elymus virginicus</i>	grass	FACW-	14	15.6%
Cup-Plant	<i>Silphium perfoliatum</i>	wildflower	FACW-	6	6.7%
Total				90	100%

PREPARATION OF THE GROUND BEFORE SEEDING SHALL BE COMPLETED IN ACCORDANCE WITH SECTION 621.03 OF THE INDOT STANDARD SPECIFICATIONS. THE REPLANTING AREA WILL BE SEEDED FOLLOWING THE COMPLETION OF THE GRADING OPERATION. AREAS SEEDED SHALL BE SEEDED AND MULCHED WITH A STRAW MULCH IN ACCORDANCE WITH SECTION 621.05 OF THE INDOT STANDARD SPECIFICATIONS. SEED MAY BE APPLIED AS A TOTAL MIX OR IN SEVERAL PASSES IF CERTAIN SPECIES ARE NOT COMPATIBLE DURING MIXING AND/OR APPLICATION. SAND OR OTHER APPROVED MATERIAL MAY BE USED AS FILLER TO FACILITATE SEEDING. FERTILIZER OR AMENDED FILLERS ARE NOT TO BE USED.

SEED MAY BE DRILLED OR SLICED INTO THE SEEDBED OR BROADCAST MECHANICALLY OR BY HAND. SEEDING AREAS THAT ARE BROADCAST SEEDED REQUIRE LIGHT RAKING TO INSURE ADEQUATE SEED-TO-SOIL CONTACT. SEED WILL NOT BE PLACED MORE THAN 1/8 (0.125) INCH DEEP. SEED THAT IS HAND BROADCAST WILL BE DISTRIBUTED UNIFORMLY ONTO THE SEEDBED. IT IS RECOMMENDED THE CONTRACTOR PURCHASE SEED FROM A SOURCE THAT HAS TREATED THE SEED IN ACCORDANCE WITH APPROPRIATE HORTICULTURAL MEANS PRIOR TO DELIVERY. SOME SEED SUCH AS LEGUMES REQUIRE SCARIFICATION. OTHER SEED REQUIRES EXPOSURE TO COLD TEMPERATURE, CALLED STRATIFICATION.

AREAS REQUIRING A TEMPORARY SEED MIX WILL BE SEEDED WITH SEED MIX T IN ACCORDANCE WITH SECTION 621.06(1) OF THE INDOT STANDARD SPECIFICATIONS FOLLOWING THE COMPLETION OF THE GRADING OPERATION. ANNUAL RYE IS A TEMPORARY SPECIES.

INDOT SEED MIXES R, U, SEED MIXTURE GRASS TYPES 1 AND 2, AND SEED MIXTURE LEGUME TYPES 1 AND 2 ARE NOT ACCEPTABLE FOR USE ANYWHERE WITHIN THE FLOODWAY.

D. SURVIVAL RATES

TREES AND SHRUBS ARE REQUIRED TO HAVE A 75% SUCCESS RATE AT 1 YEAR

THE HERBACEOUS LAYER IS TO HAVE AN 85% SUCCESS RATE AT 1 YEAR

W:\DNR\2017-276 Charleston Bank Stabilization\Design\CAD\Mitigation_Plan.dgn
 REVISION 3.0
 2/4/2020
 PDP:ahfgr
 1:55:19 PM
 NGD:tbl

										RECOMMENDED FOR APPROVAL DESIGN ENGINEER 1-20-20 DATE		INDIANA DEPARTMENT OF NATURAL RESOURCES		HORIZONTAL SCALE 1"=30' BRIDGE FILE	
								DESIGNED: DTW DRAWN: KAM		REPLANTING PLAN		VERTICAL SCALE N/A DESIGNATION			
								CHECKED: DPL CHECKED: DTW				SURVEY BOOK SHEETS 10 of 17			
												CONTRACT PROJECT ENG2003724395			

CHARLESTOWN STATE PARK
Bank Stabilization to Protect Parking Lot

SUPPLEMENTAL UNIT PRICE

The contractor agrees to accept the following unit prices to adjust the amount of the contract, if actual site conditions or later changes in the design require additional work. These unit prices shall be submitted with the lump sum bid.

1. CLASS 1 RIPRAP

\$ _____ /TON

2. CRUSHED #2 STONE & #53 STONE (50/50 BLEND)

\$ _____ / CUBIC YARD

3. EXCAVATION

\$ _____ / CUBIC YARD

4. B-BORROW

\$ _____ / CUBIC YARD

Name of bidder: _____

Date: _____



**Indiana Department of Natural Resources
Charlestown State Park
Bank Stabilization to Protect Parking Lot**

**ENG2003724395 -Pre-Bid Meeting Agenda
January 29, 2020 @ 10:00 AM**

1. Introductions and Sign-in Sheet

2. Project Description

Stabilization and restoration of the bank of the Ohio River between the two overlook structures in Charlestown State Park and at the southern overlook structure.

3. Bid Date and Time

- Bids are due by Thursday February 13, 2020 at the Bid Desk, Department of Administration, Public Works Division, 402 W. Washington St., Room W467, Indianapolis, Indiana, 46204 until 1:31 P.M. EST, after which bids will be opened.
- Provide all the documents required with the bid.

4. Contract Times

- Contract Times
 - Final Completion – December 31, 2020

5. Clarifications/Addenda

- All requests for clarification should be made in writing to:
Attn: Daniel Warren
HWC Engineering
Email: dwarren@hwcengineering.com
- Any changes to the project documents will be made by written addendum.
 - Last day for questions will be Monday February 3, 2020 by 12:00 PM Noon
 - A final addendum, if required, will be issued by Tuesday February 4, 2020.

6. Questions/Comments

Following the project overview the floor was opened to questions and comments. The following reflects the discussion at the meeting:

- Jomary Baller is the DNR Project Manager
- Lucas Green is the DNR Charlestown Park Property Manager
- Todd Sterns is the DNR Code Inspector

- Trees over 5” dbh must be cut by April 1, but work on the rest of the project is not anticipated to begin until late July/August when water levels are typically low.
- Work other than tree cutting cannot begin until permits are received. Permits (IDNR, IDEM, USACE) are under review by the regulatory agencies and are anticipated soon. Rule 5 Erosion Control Plan will be submitted soon. Expected Regulatory requirements are included in the bid documents.
- Since the parking lot and overlooks will be closed during construction, it is important that once the Contractor starts, work must be continuous so that the closure is not reasonably long.
- Tree removal is not limited, but should be selective. Coordination with DNR on tree removal is expected.
- All Contractors must be pre-qualified by IDOA in one of the 3 categories as listed on the Notice to Bidders.
- The Contractors should note the work at both overlooks. Where the work at the northern overlook shall consist of flowable-fill underneath the sidewalk due to a loss of material, and the work at the southern overlook shall consist of a sidewalk cover plate to fix a discontinuity between the sidewalk and overlook.
- The work at the toe of the project is anticipated to be done when the water level is at or below low pool. If the contractor installs the rock at the toe first, it will be acceptable as an erosion control method to prevent sediment from leaving the project. The Contractor’s means or methods to complete this work is to their discretion.

Q: Is it required to Bond the road into the look-out areas as well as the existing parking lot?

A: Per Specification 1.14: Any damages to the existing facilities, roads, laws, driveways, or other State-owned property caused by the contractor shall be repaired by the Contractor at his/her expense and in a manner and schedule approved by the Owner.

Q: There seems to be a need for borrow material to construct the project. Is there a borrow area on site?

A: No. Fill shall be per the geotechnical guidelines.

Q: Is it possible to quote a material in place of the subbase currently bid on the project?

A: See the addenda for information.

Q: It appears the existing conditions have changed since the plans were produced. How will additional quantities be paid for?

A: Lump Sum bids shall be based on the bidding documents. Any substantiated changes in site conditions from the bidding documents will be paid from a Supplemental Unit Price provided with the bid. These unit prices will **only** be used if there are substantiated changes and not for quantities in the lump sum bid amount. See the Supplemental Unit Price Sheet attached to the addenda.

Q: Are benches required to be installed per the dimensions/locations on cross section sheets?

A: The contractor will adjust the benching to field conditions as necessary.

Q: Is the 24” filter tube to be installed below the OHWM?

A: The contractor is to install the filter tube above the water level at the time of construction and adjust it as field conditions change.

IDNR – Charlestown State Park, Bank Stabilization to Protect Parking Lot
 ENG2003724395

Pre-Bid Meeting Sign-In Sheet – January 29, 2020 @ 10:00 a.m.

Name	Organization	Email	Phone #
Jomary Baller	IDNR	jballer@dnr.in.gov	317-234-8731
Daniel Warren	HWC Engineering	dwarren@hwcengineering.com	812-913-6419
RICHARD VUCKSON	R.L. VUCKSON	RLVX@AOL.COM	812-525-4265
Troy Martin	Kings Trucking & Ex.	troy@kingstrucking.net	812-522-6973
John Bruce	R.L. Vuckson	Call John Bruce @ gmail.com	812-625-7185
Vince Metz	Cardno	Vincent.metz@cardno.com	574-252-6700
BRENNAN HITE	MAC	brennanh@macconstruction.com	812-991-7895
SCOTT CRECELINS	ETB Paving	scott.crecelins@ebpaving.com	502-639-5022
J.D. Foman	ETB Paving	john.dan.foman@ebpaving.com	502-649-5314
Randy Jones	The Yard, LLC	Randy@theyardllc.net	
John Boesing	Sellersburg Store	John.boesing@irvna.com	502 572 5100

Name	Organization	Email	Phone #
CHRIS SCHUMBERG	WILLIAMS CREEK	Schalberg@williamscreekmgt.net	317-607-8701
TODD S. STEARNS	DNR Engineering	TSTEARNS@dnr.in.gov	317-499-2214
David Schneider	Riverside Cont.	dschneider@riversidecontractingllc.com	812-599-9301
Jason Miller	Temple + Temple	Jason.M@templeandtemple.com	317-883-6644

Source 2542
 Sellersburg, Indiana 47172
 812-246-3383

Daily Log Of Aggregate
 Sampling- INDOT Capp Program

Test ID# _____ Date: 1/24/2020

Material _____ Crusher Run Ledges _____ Time Sample 10:00 Frequency _____ Estimated Production _____

Weather Conditions _____

Normal Stockpile
 Startup Production Belt# _____ Loadout _____

Sieve Sizes	Long Gr.	Wt		% Pass	% Req.
		Retained	Passing		
3.5"		0	8889.4	100.0	
3"		499.1	8390.3	94.4	
2.5"		921.3	7469.0	84.0	
2"		421.5	7047.5	79.3	
1.5"		440.5	6607.0	74.3	
1"		743	5863.8	66.0	
3/4"		554	5309.8	59.7	
1/2"		1376.7	3933.1	44.2	
3/8"		667.0	3266.1	36.7	
#4		1006.6	2259.5	25.4	
#8		498.5	1761.0	19.8	
#16		266.7	1494.3	16.8	
#30		255.0	1239.3	13.9	
#50		226.7	1012.6	11.4	
#100		206.6	806.0	9.1	
#200		155.5	650.5	7.3	
Pan		104.5			
Decant	Orig.	Final	Gms Loss	% Loss	% Req.
	8889.4	8344.5	544.9	6.13	
Long		Sample Size	Prop. Factor	0.01	
Grade					

Deleterious Tests

Non-Durable	Wt. 3/8 Up	Non-Dur Wt.	% Non-Dur
	Chert Agg Size 5,8,53,73	Sample Wt. 3/8 Up	Wt. of Tot. Non-
Chert Agg Size 9,11	Sample Wt. #4 Up	Wt. of Total Chert	% Total Chert
Mech Crushed	Sample Wt. #4 Up	Wt. of Mech Crushed Pt.	% Mech Crushed
Total Crushed	Sample Wt. #4 Up	Wt. Total Crushed	% Total Crushed

Comments

Technicians Signature _____
 Supervisors Signature _____