

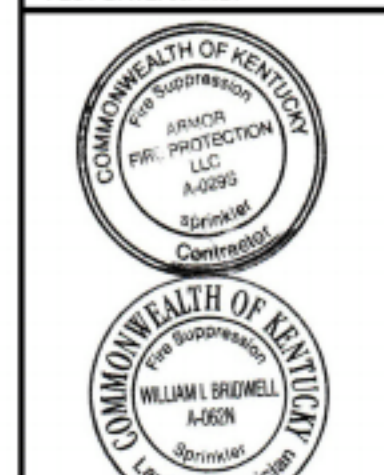
DRAWING REVISIONS	DATE	DESCRIPTION	BY	WB
#	6-17-2021	DRAWING CREATED	WB	

PROJECT NUMBER
YV0296

DRAWING FILE NAME

GARVIN
1315 READ ST.
EVANSVILLE, IN

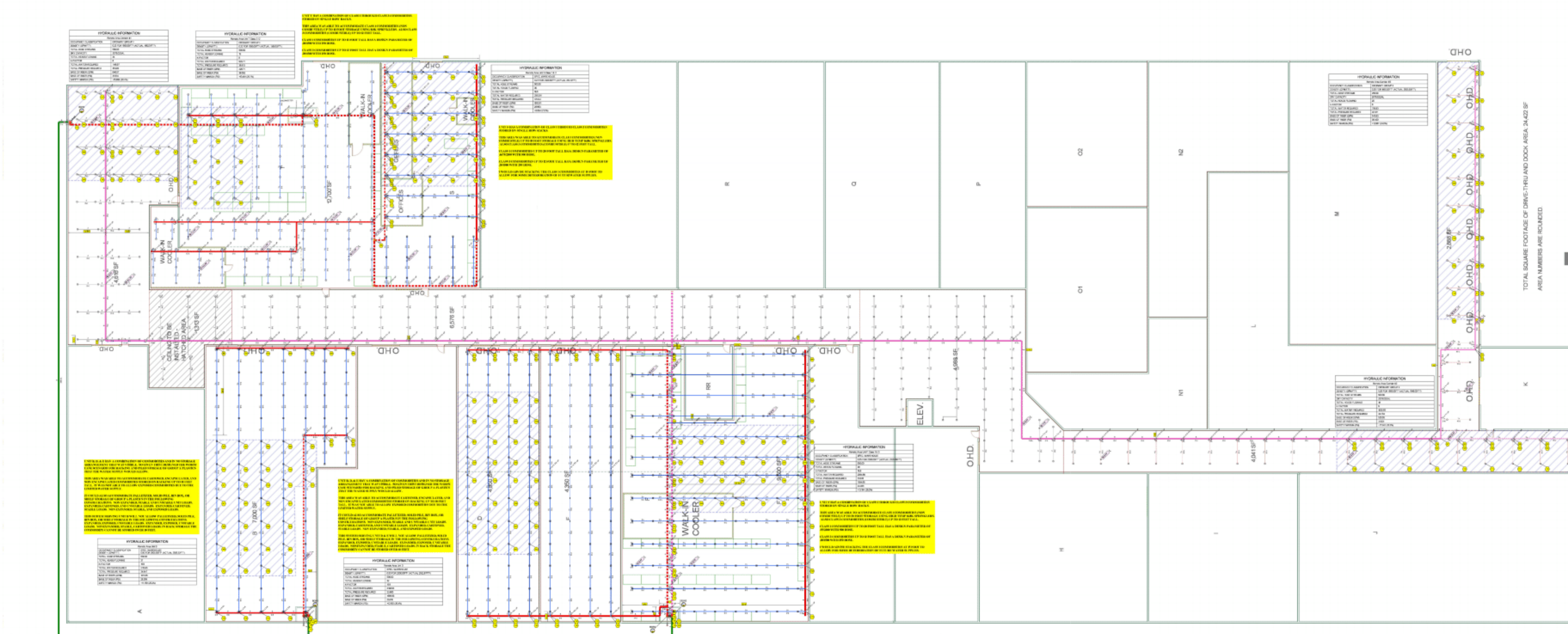
DRAWN BY: WB
PLOT DATE: 06/17/21



WAB/LSB
Nicolet 123456

SHEET DESCRIPTION
OVERALL LAYOUT

FP-000



UNIT B, D, & E ARE CLASSIFIED AS GROUP A PLASTICS:
STORAGE CONFIGURATIONS OF PALLETIZED, BIN BOX, SHELF, PILE STORAGE, AND RACK.
PLASTICS AND ANYTHING CATEGORIZED AS PLASTIC TO BE STORED 5 FEET OR LESS. IF OVER
THEY NEED TO FOLLOW TABLE 15.2.6 (A) FOR DESIGN BASIS.
UNDER NO CIRCUMSTANCE WILL THE CURRENT WATER SUPPLY ALLOW RACK STORAGE OF
GROUP A PLASTICS ABOVE 10 FEET! NOR CAN EXPANDED, EXPOSED COMMODITIES IN STABLE
SOLID PILES BE STORED!
ALL PALLETIZED, SOLID PILE, BIN BOX, AND SHELF STORAGE CONFIGURATIONS ARE ABLE TO
BE STORED UP TO A HEIGHT THAT WILL REQUIRE .50/2500 OR LESS AS A DESIGN BASIS.

Table 15.2.6(a) Design Densities for Palletized, Solid-Piled, Bin Box, or Shelf Storage
of Plastic and Rubber Commodities (U.S. Customary Units)

Maximum Storage Height (ft)	Roof/Ceiling Height (ft)	Density (gpm/ft ²)				
		A	B	C	D	E
>5 to 512	Up to 15	0.2	EH2	0.3	EH1	EH2
	>15 to 20	0.3	0.6	0.5	EH2	EH2
	>20 to 32	0.4	0.8	0.6	0.45	0.7
15	Up to 20	0.3	0.6	0.5	0.4	0.45
	>20 to 25	0.4	0.8	0.6	0.45	0.7
	>25 to 35	0.45	0.9	0.7	0.55	0.85
20	Up to 25	0.4	0.8	0.6	0.45	0.7
	>25 to 30	0.45	0.9	0.7	0.55	0.85
	>30 to 35	0.6	1.2	0.85	0.7	1.1
25	Up to 30	0.45	0.9	0.7	0.55	0.85
	>30 to 35	0.6	1.2	0.85	0.7	1.1

- Notes:
- (1) Minimum clearance between sprinkler deflector and top of storage shall be maintained as required.
 - (2) Column designations correspond to the configurations of plastics storage as follows:
A: (1) Nonexpanded, unstable
(2) Nonexpanded, stable, solid unit load
B: Expanded, exposed, stable
C: (1) Expanded, exposed, unstable
(2) Nonexpanded, stable, cartonized
D: Expanded, cartonized, unstable
E: (1) Expanded, cartonized, stable
(2) Nonexpanded, stable, exposed
 - (3) EH1 = Density required by Figure 13.2.1 for Curve EH1
 - (4) EH2 = Density required by Figure 13.2.1 for Curve EH2
 - (5) Roof/ceiling height >35 ft is not permitted.

UNIT F COMMODITIES ARE CLASSIFIED AS CLASS 1, 2, & 3:
CLASS 1 ARE NONCOMBUSTIBLE ITEMS.
CLASS 2 & 3 ARE COMBUSTIBLE ITEMS.
STORAGE CONFIGURATIONS OF SINGLE ROW RACKS.
PLASTICS AND ANYTHING CATEGORIZED AS PLASTIC TO BE STORED 5 FEET OR LESS.
UNIT T WILL ALLOW 20 FOOT STORAGE OF CLASS 1 COMMODITIES WITH HIGH TEMPERATURE SPRINKLERS AT 16.8K. CLASS 2 & 3
COMMODITIES NEED TO BE STORED NO HIGHER THAN 12 FEET.
POINT G ON FIGURE 16.2.13.2(e) SHOWS THE POINT FOR HIGH TEMPERATURE SPRINKLERS.

UNIT S COMMODITIES ARE CLASSIFIED AS CLASS 1, 2, & 3:
CLASS 1 ARE NONCOMBUSTIBLE ITEMS.
CLASS 2 & 3 ARE COMBUSTIBLE ITEMS.
STORAGE CONFIGURATIONS OF SINGLE ROW RACKS.
PLASTICS AND ANYTHING CATEGORIZED AS PLASTIC TO BE STORED 5 FEET OR LESS.
UNIT T WILL ALLOW 18 FOOT STORAGE OF CLASS 1 COMMODITIES WITH HIGH TEMPERATURE SPRINKLERS AT 16.8K. CLASS 2 & 3
COMMODITIES NEED TO BE STORED NO HIGHER THAN 12 FEET.
POINT G ON FIGURE 16.2.13.2(e) SHOWS THE POINT FOR HIGH TEMPERATURE SPRINKLERS.

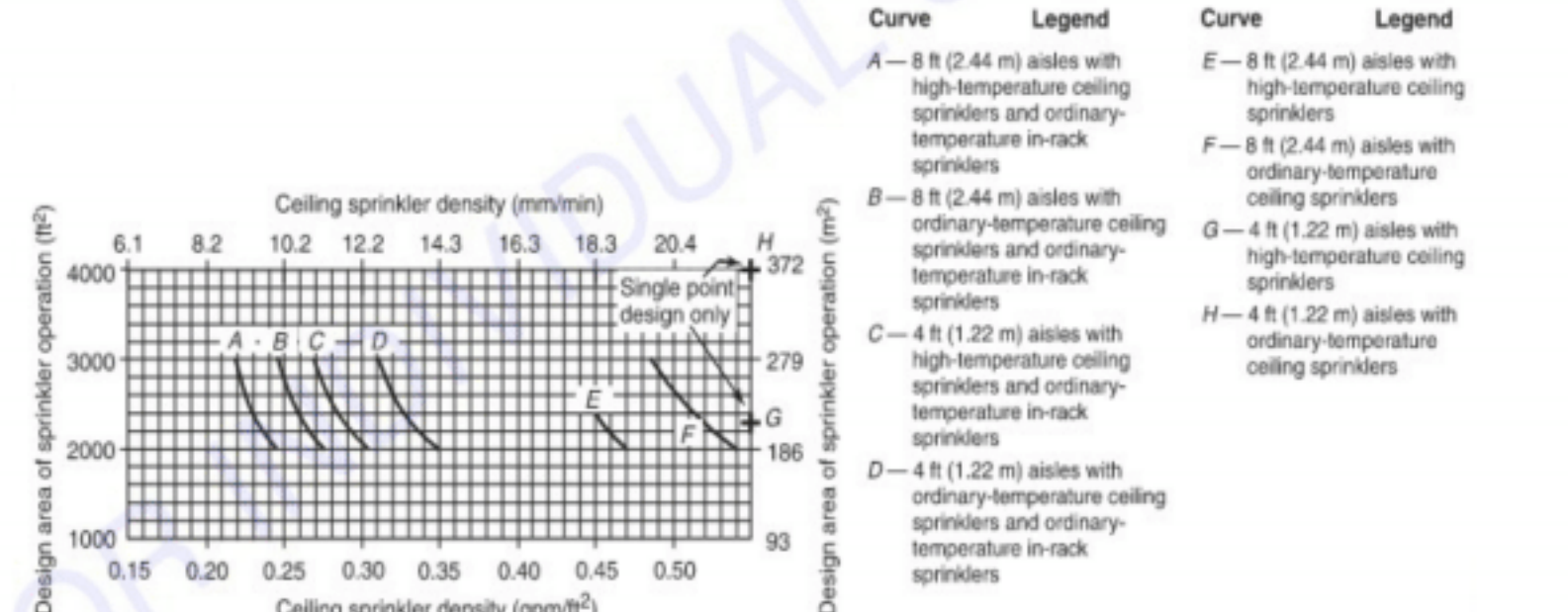


FIGURE 16.2.13.2(e) Single- or Double-Row Racks — 20 ft (6.1 m) High Rack Storage — Sprinkler System Design Curves — Class I and Class II Encapsulated Commodities — Conventional Pallets.

UNIT T COMMODITIES ARE CLASSIFIED AS CLASS 1, 2, & 3:
CLASS 1 ARE NONCOMBUSTIBLE ITEMS.
CLASS 2 & 3 ARE COMBUSTIBLE ITEMS.
STORAGE CONFIGURATIONS OF SINGLE ROW RACKS.
PLASTICS AND ANYTHING CATEGORIZED AS PLASTIC TO BE STORED 5 FEET OR LESS.
UNIT T WILL ALLOW 12 FOOT STORAGE OF CLASS 1 COMMODITIES WITH HIGH TEMPERATURE SPRINKLERS AT 8.0K. CLASS 2 & 3 COMMODITIES NEED TO BE STORED NO HIGHER THAN 12 FEET
TABLE 13.2.1 SHOWS THE DESIGN CURVE USED FOR 12 FOOT STORAGE OF CLASS 12.3
COMMODITIES AND THE STORAGE HEIGHTS ALLOWED FOR THEM.

Table 13.2.1 Discharge Criteria for Miscellaneous Storage Up to 12 ft (3.7 m) in Height

Commodity	Type of Storage	Storage Height		Maximum Ceiling Height		Design Curve Figure 13.2.1	Note	Inside Hose		Total Combined Inside and Outside Hose		Duration (minutes)	
		ft	m	ft	m			gpm	L/min	gpm	L/min		
Class I to Class IV													
Class I	Solid-piled, palletized, bin box, shelf, rack, and back-to-back shelf storage	≤12	≤5.7	—	—	OH1		0.56, 100	0.189, 379	250	946	90	
Class II		≤10	≤5.0	—	—	OH1		0.56, 100	0.189, 379	250	946	90	
Class III		≤10 to ≤12	≤5.7	—	—	OH2		0.56, 100	0.189, 379	250	946	90	
Class IV		≤10	≤5.0	—	—	OH2		0.56, 100	0.189, 379	250	946	90	
Class V	Palletized, bin box, shelf, and solid-piled	≤10 to ≤12	≤5.7	32	9.8	OH2		0.56, 100	0.189, 379	250	946	90	
	Rack and back-to-back shelf storage	≤10 to ≤12	≤5.7	32	9.8	EH1		0.56, 100	0.189, 379	500	1893	120	
Group A Plastic Storage													
Cartoned	Unexpanded and expanded	≤5	≤1.5	—	—	OH2		0.56, 100	0.189, 379	250	946	90	
		≤5 to ≤10	≤1.5 to ≤3.0	15	4.6	EH1		0.56, 100	0.189, 379	500	1893	120	
		≤5 to ≤10	≤1.5 to ≤3.0	20	6.1	EH2		0.56, 100	0.189, 379	500	1893	120	
		≤10 to ≤12	≤3.0 to ≤5.7	17	5.2	EH2		0.56, 100	0.189, 379	500	1893	120	
		Solid-piled, palletized, bin box, shelf, and back-to-back shelf storage	≤10 to ≤12	≤3.0 to ≤5.7	32	9.8	EH2		0.56, 100	0.189, 379	500	1893	120
		Rack	≤10 to ≤12	≤3.0 to ≤5.7	32	9.8	OH2	+ 1 level of at-rack	0.56, 100	0.189, 379	250	946	90

(continues)

Sprinkler Legend										
SYMBOL	MANUFACTURER	SIN	MODEL	QUANTITY	K-FACTOR	TYPE	SIZE	RESPONSE	FINISH	TEMPERATURE
	RELIABLE	RA124	J168	348	16.8	UPRIGHT	1/2"	QUICK	BRASS	165°F
	GENERIC			359	8	UPRIGHT	1/2"	QUICK	BRASS	165°F
				TOTAL = 707						

UNIT T HAS A COMBINATION OF CLASS 1 THROUGH CLASS 3 COMMODITIES STORED ON SINGLE ROW RACKS.

THIS AREA WAS ABLE TO ACCOMMODATE CLASS 1 COMMODITIES (NON COMBUSTIBLE) UP TO 12 FOOT STORAGE USING 8.0K SPRINKLERS. ALSO CLASS 3 COMMODITIES (COMBUSTIBLE) UP TO 12 FEET TALL.

CLASS 1 COMMODITIES UP TO 12 FOOT TALL HAS A DESIGN PARAMETER OF 20/1500 WITH 250 HOSE.

CLASS 3 COMMODITIES UP TO 12 FOOT TALL HAS A DESIGN PARAMETER OF 20/1500 WITH 250 HOSE.

HYDRAULIC INFORMATION	
Remote Area Corridor #1	
OCCUPANCY CLASSIFICATION	ORDINARY GROUP II
DENSITY (GPM/FT²)	0.20 FOR 1500.00FT² (ACTUAL 1562.51FT²)
TOTAL HOSE STREAMS	500.00
DRY CAPACITY	2079.02GAL
TOTAL HEADS FLOWING	24
K-FACTOR	8
TOTAL WATER REQUIRED	1148.97
TOTAL PRESSURE REQUIRED	35.920
BASE OF RISER (GPM)	648.97
BASE OF RISER (PSI)	31934
SAFETY MARGIN (PSI)	+15.699 (30.4%)

HYDRAULIC INFORMATION	
Remote Area Unit T Class 3 12'	
OCCUPANCY CLASSIFICATION	ORDINARY GROUP I
DENSITY (GPM/FT²)	0.20 FOR 1500.00FT² (ACTUAL 1366.53FT²)
TOTAL HOSE STREAMS	500.00
TOTAL HEADS FLOWING	15
K-FACTOR	8
TOTAL WATER REQUIRED	926.71
TOTAL PRESSURE REQUIRED	38.913
BASE OF RISER (GPM)	426.71
BASE OF RISER (PSI)	36.092
SAFETY MARGIN (PSI)	+13.481 (25.7%)

HYDRAULIC INFORMATION	
Remote Area Unit S Class 1 & 3	
OCCUPANCY CLASSIFICATION	SPEC. WAREHOUSE
DENSITY (GPM/FT²)	0.47 FOR 2300.00FT² (ACTUAL 2323.12FT²)
TOTAL HOSE STREAMS	500.00
TOTAL HEADS FLOWING	30
K-FACTOR	16.8
TOTAL WATER REQUIRED	2053.91
TOTAL PRESSURE REQUIRED	37.044
BASE OF RISER (GPM)	653.91
BASE OF RISER (PSI)	29.893
SAFETY MARGIN (PSI)	+9.954 (21.2%)

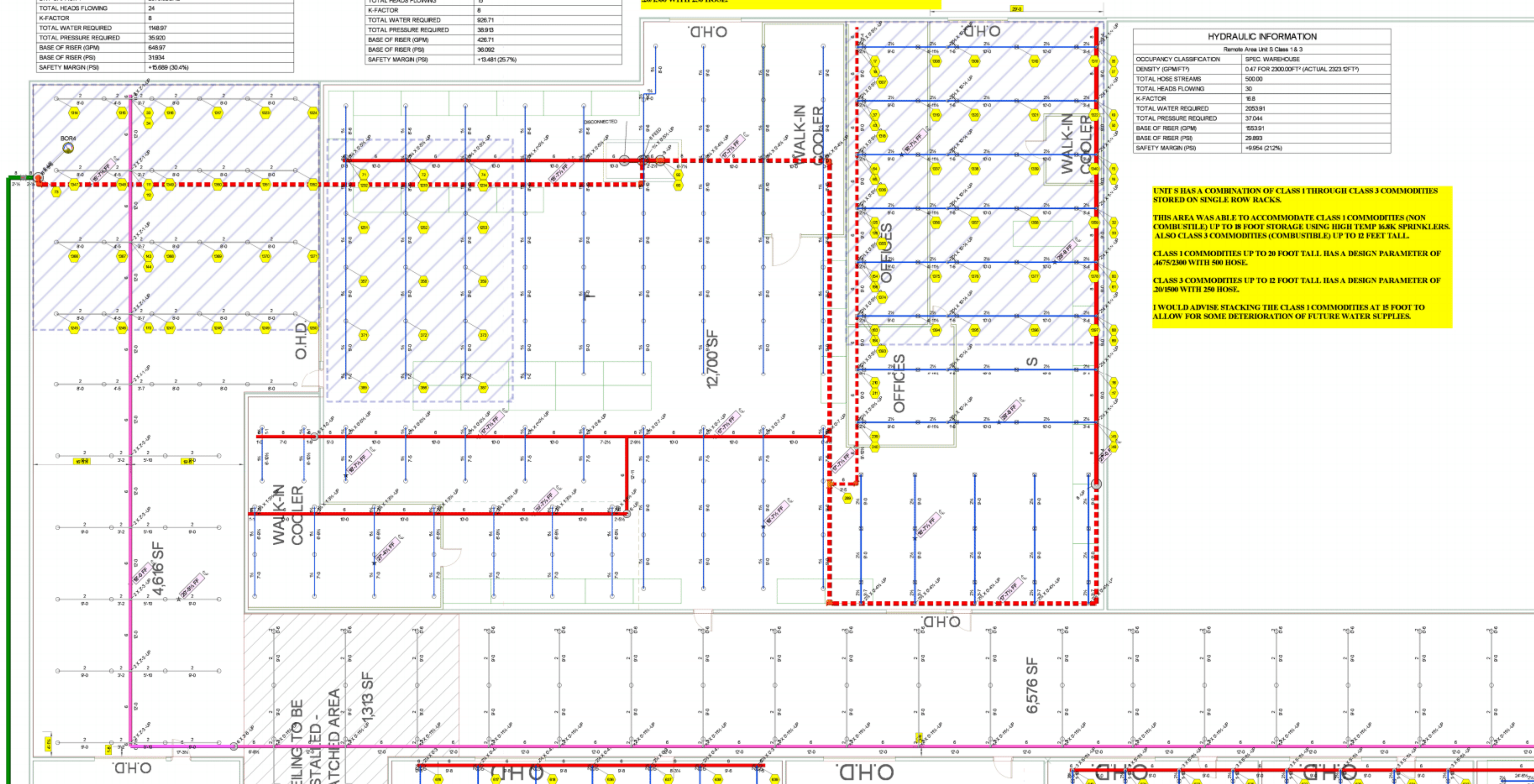
UNIT S HAS A COMBINATION OF CLASS 1 THROUGH CLASS 3 COMMODITIES STORED ON SINGLE ROW RACKS.

THIS AREA WAS ABLE TO ACCOMMODATE CLASS 1 COMMODITIES (NON COMBUSTIBLE) UP TO 18 FOOT STORAGE USING HIGH TEMP 16.8K SPRINKLERS. ALSO CLASS 3 COMMODITIES (COMBUSTIBLE) UP TO 12 FEET TALL.

CLASS 1 COMMODITIES UP TO 20 FOOT TALL HAS A DESIGN PARAMETER OF 4675/2300 WITH 500 HOSE.

CLASS 3 COMMODITIES UP TO 12 FOOT TALL HAS A DESIGN PARAMETER OF 20/1500 WITH 250 HOSE.

I WOULD ADVISE STACKING THE CLASS 1 COMMODITIES AT 15 FOOT TO ALLOW FOR SOME DETERIORATION OF FUTURE WATER SUPPLIES.



Armor
Fire Protection
Protecting Lives and Property

1196 5TH STREET
HENDERSON, KY 42420
PHONE: (270)830-7515
FAX: (270)830-7616

POWERED BY **API Group**

DRAWING REVISIONS	DATE	DESCRIPTION	BY	DATE	DESCRIPTION	BY
1	05-17-2021	DRAWING CREATED	WB			

PROJECT NUMBER: YV0296
DRAWING FILE NAME: _____

GARVIN
1315 READ ST.
EVANSVILLE, IN

DRAWN BY: WB
PLOT DATE: 06/17/21

WILLIAM BRUMELL
A-0295
Professional Engineer
Layout Technician

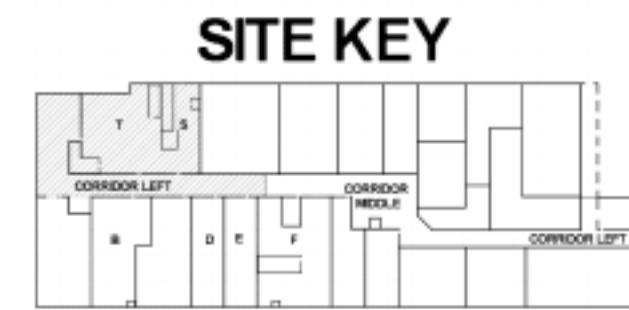
WILLIAM BRUMELL
A-0295
Professional Engineer
Layout Technician

SCALE: 1/8" = 1'-0"

SHEET DESCRIPTION
UNIT T, S, & LEFT CORRIDOR

FP-100

FIRE PROTECTION REMODEL PLAN
UNIT T, S, & LEFT CORRIDOR



Sprinkler Legend										
SYMBOL	MANUFACTURER	SIN	MODEL	QUANTITY	K-FACTOR	TYPE	SIZE	RESPONSE	FINISH	TEMPERATURE
	RELIABLE	RA124	J18	348	16.8	UPRIGHT	1/2"	QUICK	BRASS	165°F
	GENERIC			359	8	UPRIGHT	1/2"	QUICK	BRASS	165°F
				TOTAL = 707						

UNIT B, D, & E HAVE A COMBINATION OF COMMODITIES AND IN NO STORAGE ARRANGEMENT THAT WAS VISIBLE. SO GIVEN THIS I DESIGNED THE WORST CASE SCENARIO FOR RACKING AND PILED STORAGE OF GROUP A PLASTICS THAT THE WATER SUPPLY WOULD ALLOW.

THIS AREA WAS ABLE TO ACCOMMODATE CARTONED, ENCAPSULATED, AND NON ENCAPSULATED COMMODITIES STORED ON RACKING UP TO 10 FEET TALL. IT WAS NOT ABLE TO ALLOW EXPOSED COMMODITIES DUE TO THE LIMITED WATER SUPPLY.

IT COULD ALSO ACCOMMODATE PALLETIZED, SOLID PILE, BIN BOX, OR SHELF STORAGE OF GROUP A PLASTICS IN THE FOLLOWING CONFIGURATIONS. NON EXPANDED, STABLE AND UNSTABLE UNIT LOADS. EXPANDED, CARTONED, AND UNSTABLE LOADS. EXPANDED, CARTONED, STABLE LOADS. NON EXPANDED, STABLE, AND EXPOSED LOADS.

THIS SYSTEM SERVING UNIT B WILL NOT ALLOW PALLETIZED, SOLID PILE, BIN BOX, OR SHELF STORAGE IN THE FOLLOWING CONFIGURATIONS. EXPANDED, EXPOSED, UNSTABLE LOADS. EXPANDED, EXPOSED, UNSTABLE LOADS. NONEXPANDED, STABLE, CARTONED LOADS. IN RACK STORAGE THE COMMODITY CANNOT BE STORED OVER 10 FEET.

HYDRAULIC INFORMATION	
Remote Area Unit B	
OCCUPANCY CLASSIFICATION	SPEC. WAREHOUSE
DENSITY (GPM/FT²)	0.50 FOR 2500.00FT² (ACTUAL 2530.32FT²)
TOTAL HOSE STREAMS	500.00
TOTAL HEADS FLOWING	31
K-FACTOR	16.8
TOTAL WATER REQUIRED	213.65
TOTAL PRESSURE REQUIRED	34.847
BASE OF RISER (GPM)	163.65
BASE OF RISER (PSI)	28.399
SAFETY MARGIN (PSI)	+11.768 (25.2%)

UNIT B, D, & E HAVE A COMBINATION OF COMMODITIES AND IN NO STORAGE ARRANGEMENT THAT WAS VISIBLE. SO GIVEN THIS I DESIGNED THE WORST CASE SCENARIO FOR RACKING AND PILED STORAGE OF GROUP A PLASTICS THAT THE WATER SUPPLY WOULD ALLOW.

THIS AREA WAS ABLE TO ACCOMMODATE CARTONED, ENCAPSULATED, AND NON ENCAPSULATED COMMODITIES STORED ON RACKING UP TO 10 FEET TALL. IT WAS NOT ABLE TO ALLOW EXPOSED COMMODITIES DUE TO THE LIMITED WATER SUPPLY.

IT COULD ALSO ACCOMMODATE PALLETIZED, SOLID PILE, BIN BOX, OR SHELF STORAGE OF GROUP A PLASTICS IN THE FOLLOWING CONFIGURATIONS. NON EXPANDED, STABLE AND UNSTABLE UNIT LOADS. EXPANDED, CARTONED, AND UNSTABLE LOADS. EXPANDED, CARTONED, STABLE LOADS. NON EXPANDED, STABLE, AND EXPOSED LOADS.

THIS SYSTEM SERVING UNIT D & E WILL NOT ALLOW PALLETIZED, SOLID PILE, BIN BOX, OR SHELF STORAGE IN THE FOLLOWING CONFIGURATIONS. EXPANDED, EXPOSED, UNSTABLE LOADS. EXPANDED, EXPOSED, UNSTABLE LOADS. NONEXPANDED, STABLE, CARTONED LOADS. IN RACK STORAGE THE COMMODITY CANNOT BE STORED OVER 10 FEET.

HYDRAULIC INFORMATION	
Remote Area Unit D	
OCCUPANCY CLASSIFICATION	SPEC. WAREHOUSE
DENSITY (GPM/FT²)	0.50 FOR 2500.00FT² (ACTUAL 2532.87FT²)
TOTAL HOSE STREAMS	500.00
TOTAL HEADS FLOWING	32
K-FACTOR	16.8
TOTAL WATER REQUIRED	216.93
TOTAL PRESSURE REQUIRED	33.905
BASE OF RISER (GPM)	166.93
BASE OF RISER (PSI)	23.910
SAFETY MARGIN (PSI)	+12.150 (26.4%)

Armor
Fire Protection
Protecting Lives and Property

1196 5TH STREET
HENDERSON, KY 42420
PHONE: (270)830-7515
FAX: (270)830-7616

DRAWING REVISIONS		PROJECT NUMBER	
#	DATE	DESCRIPTION	BY
1	6-17-2021	DRAWING CREATED	WB
		DRAWING FILE NAME	
		FP-200	

GARVIN
1315 READ ST.
EVANSVILLE, IN

DRAWN BY: WB
PLOT DATE: 06/17/21

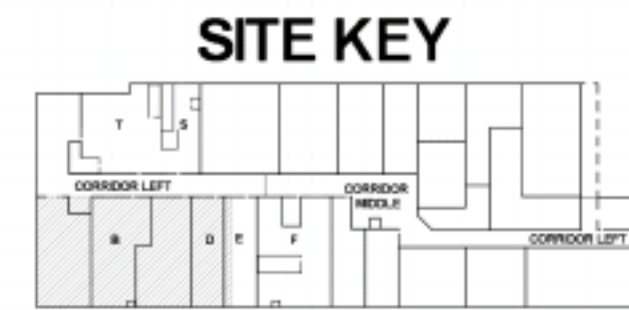
WILLIAM BRUMELL
A-0299
Professional Engineer
State of Kentucky

WILLIAM BRUMELL
#123456
Fire Protection Specialist
State of Kentucky

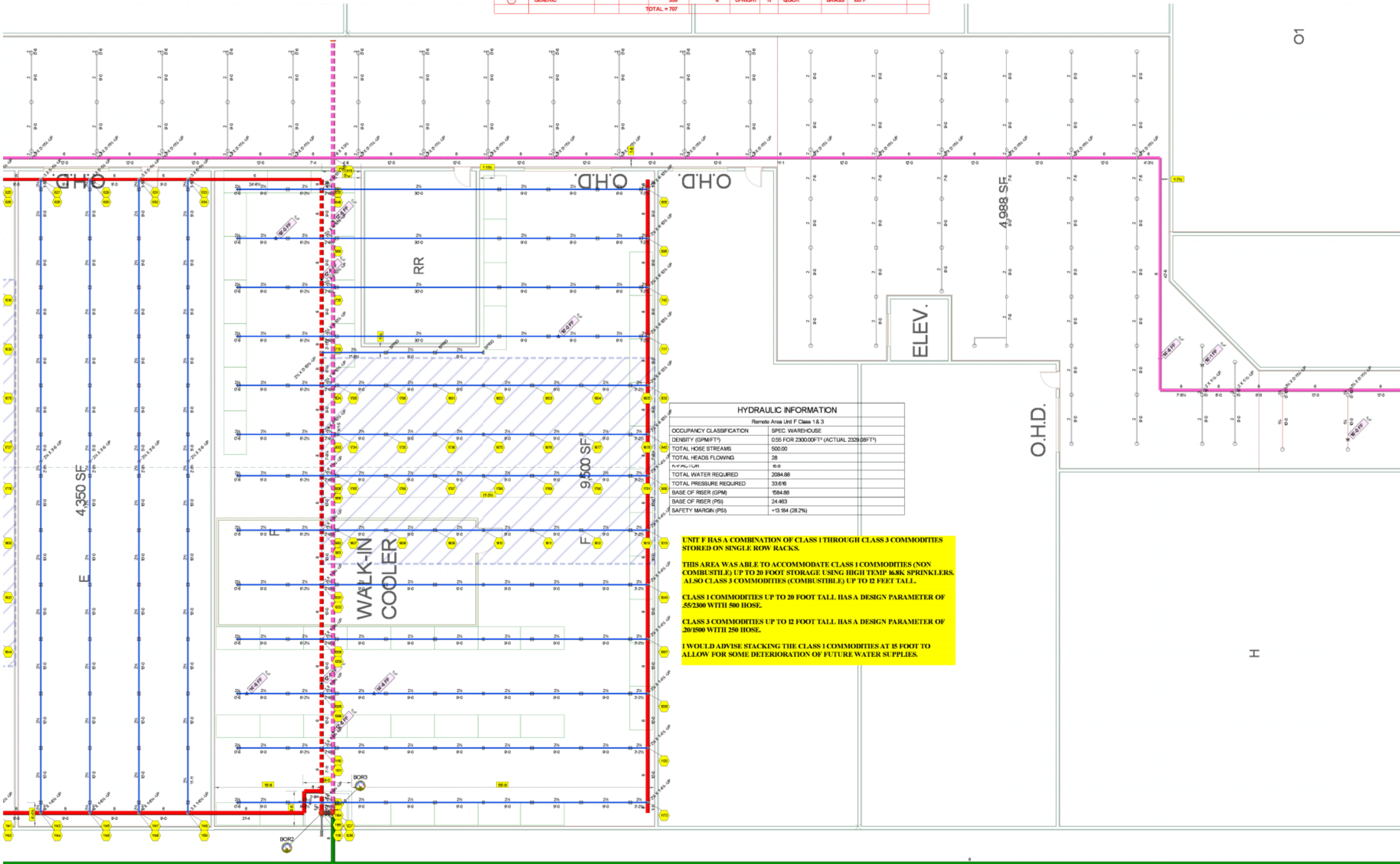
SHEET DESCRIPTION
UNIT B & D

FP-200

FIRE PROTECTION REMODEL PLAN **UNIT B & D**



Sprinkler Legend										
SYMBOL	MANUFACTURER	SIN	MODEL	QUANTITY	K-FACTOR	TYPE	SIZE	RESPONSE	FINISH	TEMPERATURE
	RELIABLE	RA1124	J168	348	16.8	UPRIGHT	1/2"	QUICK	BRASS	165°F
	GENERIC			358	8	UPRIGHT	1/2"	QUICK	BRASS	165°F
				TOTAL = 707						



HYDRAULIC INFORMATION	
Remote Area Unit F Class 1 & 3	
OCCUPANCY CLASSIFICATION	SPEC. WAREHOUSE
DENSITY (GPM/FT²)	0.55 FOR 2300.00FT² (ACTUAL 2309.08FT²)
TOTAL HOSE STREAMS	500.00
TOTAL HEADS FLOWING	28
WATER SUPPLY	10.0
TOTAL WATER REQUIRED	2084.88
TOTAL PRESSURE REQUIRED	33.615
BASE OF RISER (GPM)	1584.88
BASE OF RISER (PSI)	24.463
SAFETY MARGIN (PSI)	+13.154 (28.2%)

UNIT F HAS A COMBINATION OF CLASS 1 THROUGH CLASS 3 COMMODITIES STORED ON SINGLE ROW RACKS.

THIS AREA WAS ABLE TO ACCOMMODATE CLASS 1 COMMODITIES (NON COMBUSTIBLE) UP TO 20 FOOT STORAGE USING HIGH TEMP 168K SPRINKLERS. ALSO CLASS 3 COMMODITIES (COMBUSTIBLE) UP TO 12 FEET TALL.

CLASS 1 COMMODITIES UP TO 20 FOOT TALL HAS A DESIGN PARAMETER OF 55/2300 WITH 500 HOSE.

CLASS 3 COMMODITIES UP TO 12 FOOT TALL HAS A DESIGN PARAMETER OF 20/1500 WITH 250 HOSE.

I WOULD ADVISE STACKING THE CLASS 1 COMMODITIES AT 15 FOOT TO ALLOW FOR SOME DETERIORATION OF FUTURE WATER SUPPLIES.

Armor
Fire Protection
Protecting Lives and Property

1196 5TH STREET
HENDERSON, KY 42420
PHONE: (270)830-7515
FAX: (270)830-7616

#	DATE	DESCRIPTION	BY	WB
1	6-17-2021	DRAWING CREATED		

PROJECT NUMBER
YV0296

DRAWING FILE NAME
-

GARVIN
1315 READ ST.
EVANSVILLE, IN

DRAWN BY: WB
PLOT DATE: 06/17/21

COMMONWEALTH OF KENTUCKY
FIRE SUPPRESSION
ARMOR FIRE PROTECTION LLC
A-0295
Sprinkler Contractor

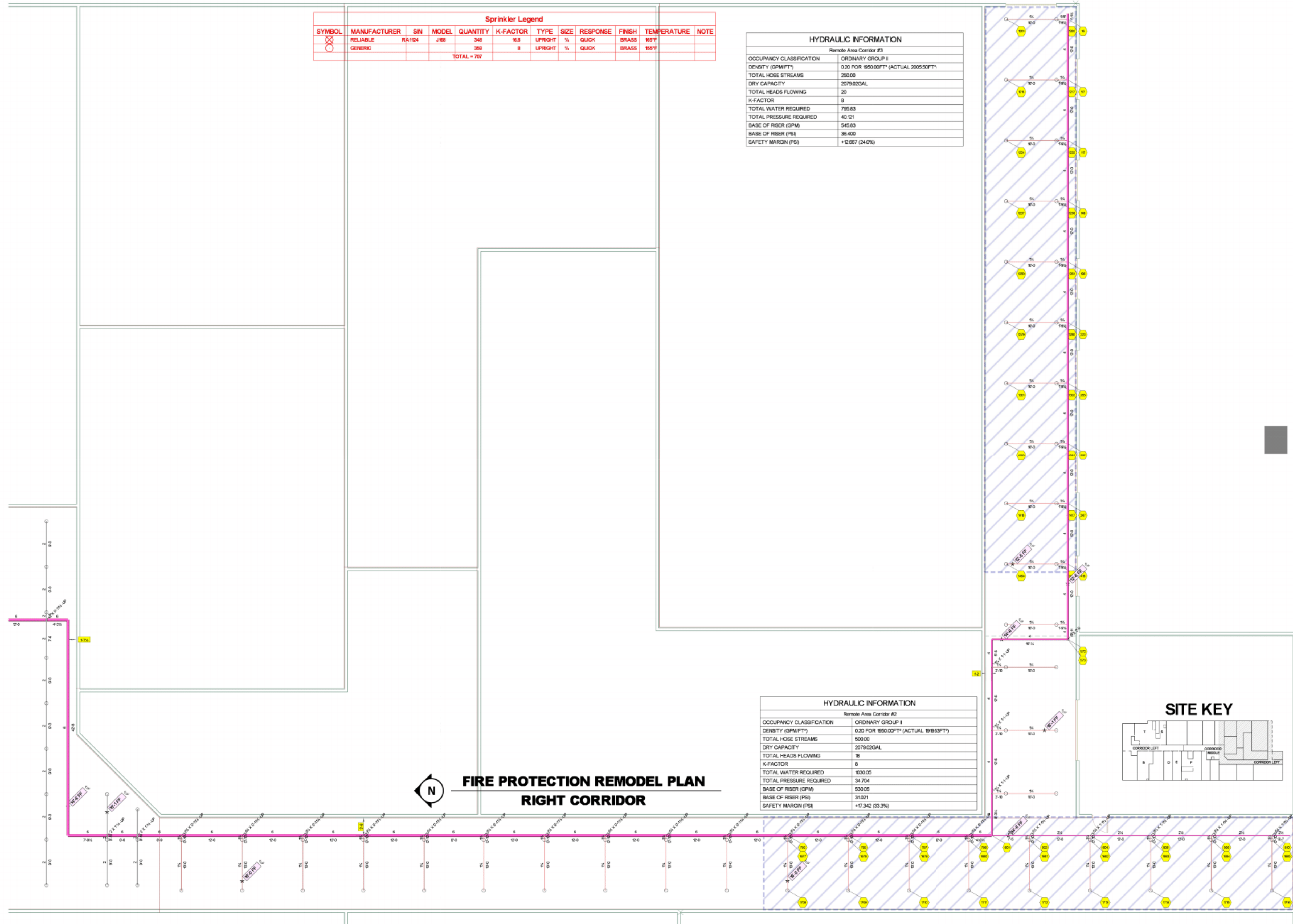
COMMONWEALTH OF KENTUCKY
FIRE SUPPRESSION
WILLIAM BRIDGEMAN
A-0601
Sprinkler Layout Technician

W.B. Sae
Nicot (C.E.T.) #123182

SCALE: 1/8" = 1'-0"

SHEET DESCRIPTION
UNIT E, F, MIDDLE CORRIDOR

FP-300



Sprinkler Legend										
SYMBOL	MANUFACTURER	SIN	MODEL	QUANTITY	K-FACTOR	TYPE	SIZE	RESPONSE	FINISH	TEMPERATURE
	RELIABLE	RA124	J168	348	16.8	UPRIGHT	1/2"	QUICK	BRASS	155°F
	GENERIC			359	8	UPRIGHT	1/2"	QUICK	BRASS	155°F
				TOTAL = 707						

HYDRAULIC INFORMATION	
Remote Area Corridor #3	
OCCUPANCY CLASSIFICATION	ORDINARY GROUP II
DENSITY (GPM/FT²)	0.20 FOR 1550.00FT² (ACTUAL 2005.50FT²)
TOTAL HOSE STREAMS	250.00
DRY CAPACITY	2079.02GAL
TOTAL HEADS FLOWING	20
K-FACTOR	8
TOTAL WATER REQUIRED	795.83
TOTAL PRESSURE REQUIRED	40.121
BASE OF RISER (GPM)	545.83
BASE OF RISER (PSI)	36.400
SAFETY MARGIN (PSI)	+12.667 (24.0%)

HYDRAULIC INFORMATION	
Remote Area Corridor #2	
OCCUPANCY CLASSIFICATION	ORDINARY GROUP II
DENSITY (GPM/FT²)	0.20 FOR 1550.00FT² (ACTUAL 1919.33FT²)
TOTAL HOSE STREAMS	500.00
DRY CAPACITY	2079.02GAL
TOTAL HEADS FLOWING	18
K-FACTOR	8
TOTAL WATER REQUIRED	1030.05
TOTAL PRESSURE REQUIRED	34.704
BASE OF RISER (GPM)	530.05
BASE OF RISER (PSI)	31.021
SAFETY MARGIN (PSI)	+17.342 (33.3%)



Protecting Lives and Property

1196 5TH STREET
HENDERSON, KY 42420
PHONE: (270)830-7515
FAX: (270)830-7616

DRAWING REVISIONS	BY	DATE	DESCRIPTION
1	WB	06-17-2021	DRAWING CREATED

PROJECT NUMBER
YV0296

DRAWING FILE NAME
-

GARVIN
1315 READ ST.
EVANSVILLE, IN

DRAWN BY: WB
PLOT DATE: 06/17/21

COMMONWEALTH OF KENTUCKY
FIRE SUPPRESSION
ARMOR FIRE PROTECTION LLC
A-0295
Sprinkler Contractor

COMMONWEALTH OF KENTUCKY
FIRE SUPPRESSION
WILLIAM BRIDGEMAN
A-0626
Sprinkler Layout Technician

WLB / Bae
Nicolet #123882

SCALE: 1/8" = 1'-0"

SHEET DESCRIPTION
RIGHT CORRIDOR

FP-400