

What is Child Support?

Child support helps pay for a child's basic needs including food, shelter, clothing, and medical care.

The amount of child support you are ordered to pay is based upon the Indiana Child Support Guidelines.

The calculation of support takes into consideration:

- Both parents' incomes;
- The number of overnights the child(ren) spend with each parent;
- Work-related child care;
- Health insurance expenses; and
- Whether either parent supports other children.

The court may also order one or both parents to carry health insurance for the child(ren).

Did You Know?

Child support has been shown to reduce the child poverty rate and improve child well-being.

Studies also show that child support has a positive effect on academic achievement.

—Office of Child Support Enforcement,
Child Support 101: Child Support Basics

Resources

Indiana Child Support Bureau

in.gov/dcs/child-support

Find local child support offices, links to child support guidelines and other resources.

Kidsline

800-840-8757

Monday-Friday | 7 a.m.–5 p.m. ET

Indiana Parenting Time HelpLine

844-836-0003

Monday-Friday | 11 a.m.–6 p.m. ET

pthelp@dcsl.in.gov

Indiana Legal Help

indianalegalhelp.org

Indiana Coalition Against Domestic Violence

icadvinc.org

800-332-7385

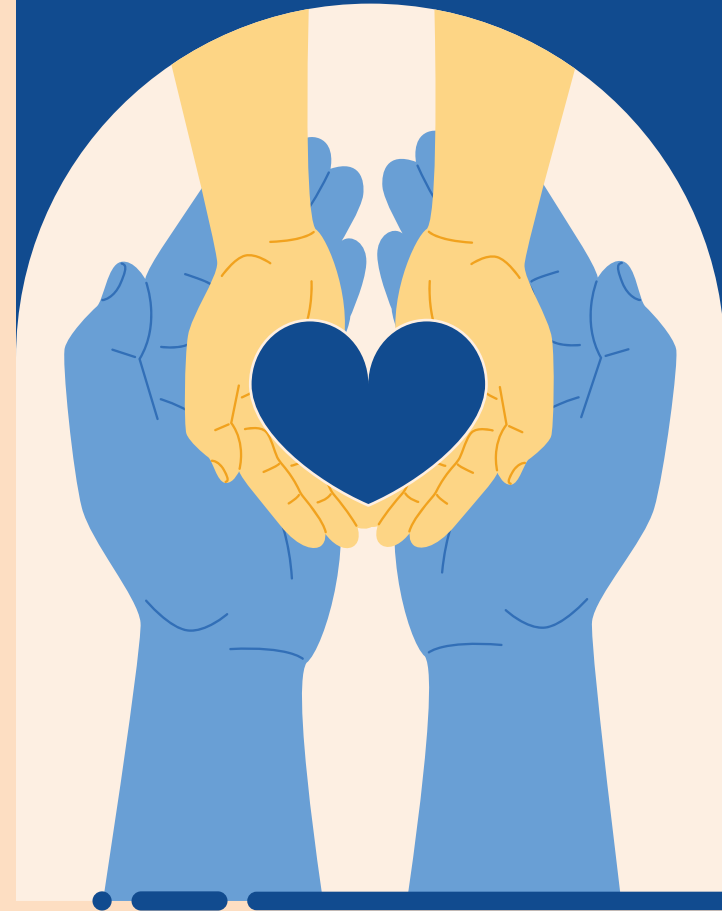
Indiana Child Abuse Hotline

800-800-5556

Toll-free 24 hours a day, seven days a week to report suspected child abuse or neglect.



Indiana Child Support Bureau in partnership with Indiana's Prosecutors and Clerks.



Indiana Title IV-D Child Support Program

Child Support Payments

We champion Indiana's future by protecting children and strengthening families with compassion and determination.

Four Easy Ways to Pay

1 *Income Withholding Order*

An income withholding order (IWO) is an order to your employer or anyone else who pays you income (even as an independent contractor) to deduct child support from your paycheck. This is the most reliable and convenient way for you to pay child support.

Contact your local child support office, the court, or your attorney, to have an IWO sent to your employer.

2 *Credit or Debit Card**

- childsupportbillpay.com/indiana
- expertpay.com
- 1-866-972-9427

3 *Cash*

- County Clerk's office
- MoneyGram outlets can be found by visiting MoneyGram.com/Locations.*
- PayNearMe outlets can be found by visiting PayNearMe.com/Indiana.*

4 *Check or Money Order*

Indiana State Central Collection Unit (INSCCU)

PO Box 6219

Indianapolis, IN 46206-6219

Include your ISETS case number and custodial party name. (Do not send cash.) You can call the Kidsline toll free at 800-840-8757 to get your case number.

**Additional fees may apply.*

Frequently Asked Questions

What is the difference between current child support and child support arrears (past due child support)?

Current child support is the amount of money that a person is supposed to pay on a regular basis. In Indiana, child support is typically ordered to be paid weekly or bi-weekly. Child support arrears are the amount of current support that was not paid when due.

My new employer hasn't started taking my child support out of my paycheck yet. Do I wait to pay until the income withholding starts?

No. It is always your responsibility to make sure your child support is paid on time. Payments should be made using one of the other Four Easy Ways to Pay while the income withholding order is in progress.

How can I find out if a child support payment was received?

Check the status of payments by either contacting the Kidsline at (800) 840-8757 or visiting our website at in.gov/dcs/child-support/make-a-payment/.

I was sent a letter telling me that I owe an Annual Support Fee. What is this?

The Annual Support Fee (ASFE), sometimes referred to as a docket fee, is a once-a-year administrative fee for processing child support payments. The fee is required by law in all cases with either a current child support order or balance due.

Can I stop making child support payments if the other parent does not let me see my child?

No. Child support and parenting time are two separate issues, and they are equally important. For information on how to get a Parenting Time order, or enforce one, contact the Indiana Parenting Time HelpLine. (See back panel for contact information.)

Why can't I pay support directly to the other parent?

Paying support the way the court orders creates a record of payments. Payments made directly, to the other parent or child, may be considered a gift. If the payment is considered a gift, it may not count as a child support payment.

For more information, visit
www.in.gov/dcs/child-support/

