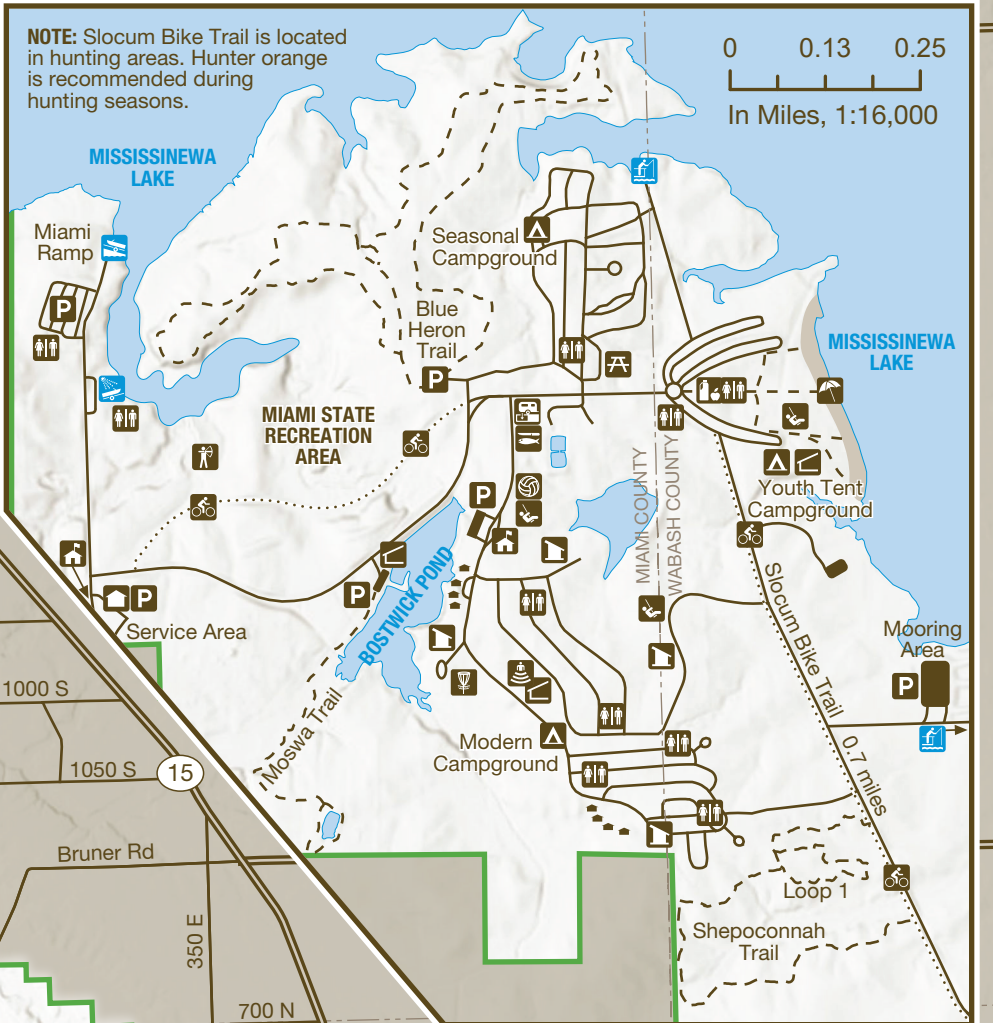
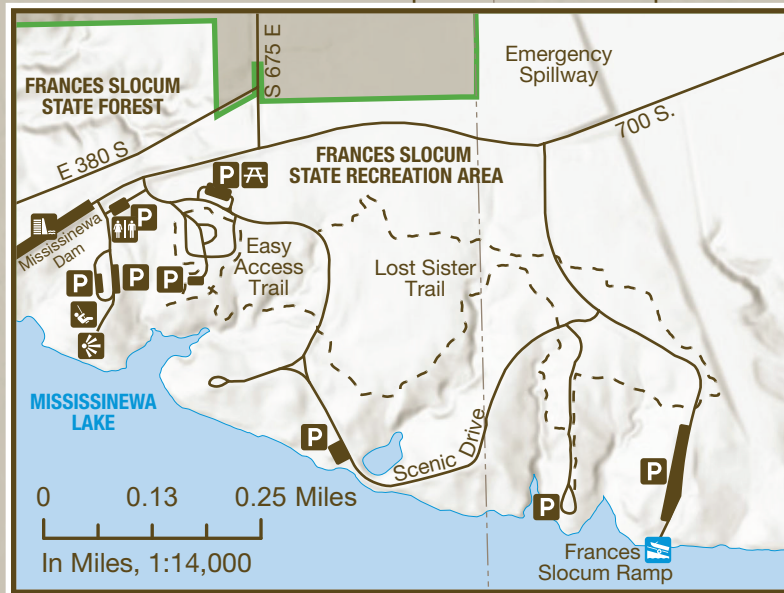
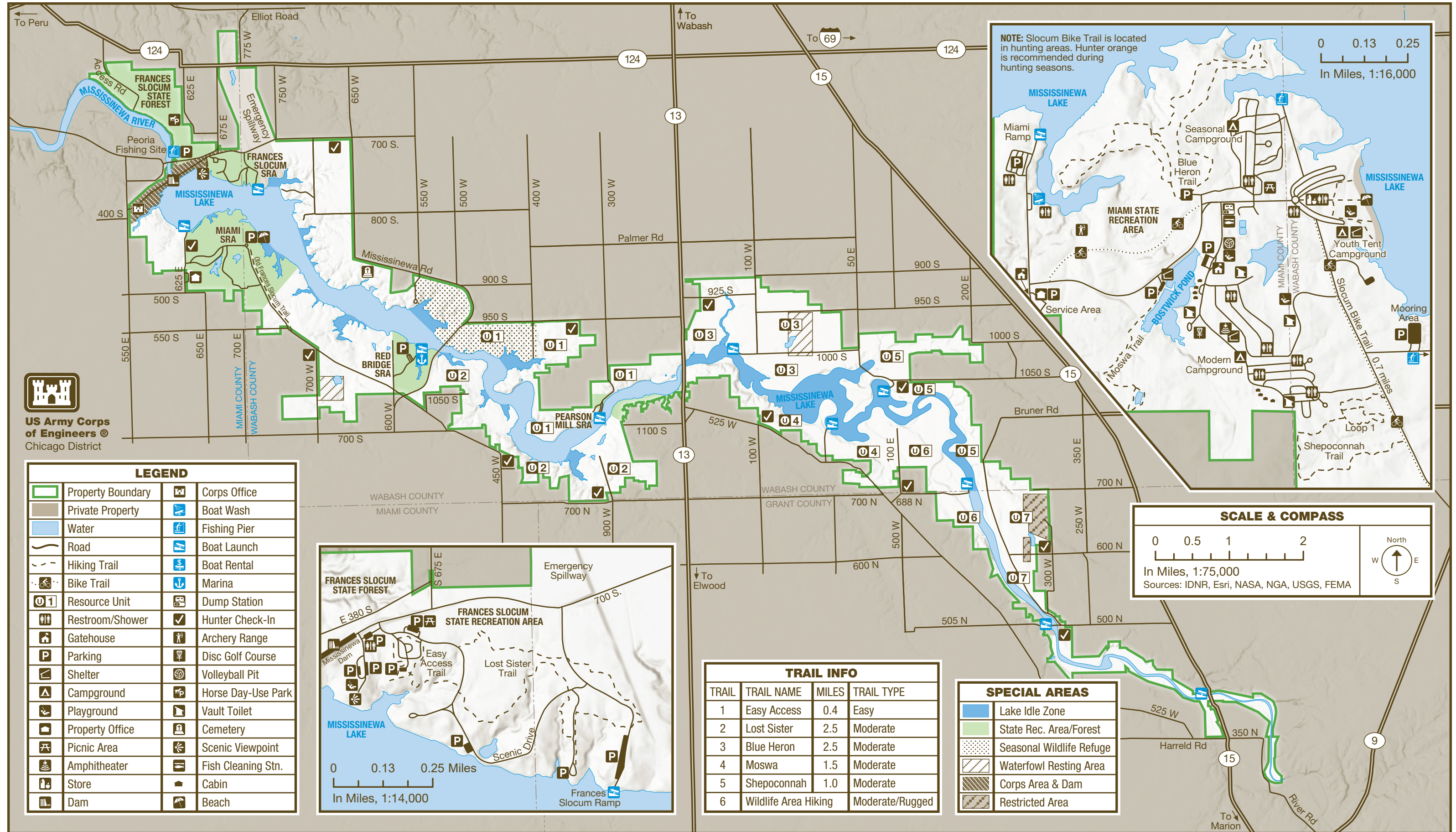


# MISSISSINEWA LAKE

4673 S. 625 E. | Peru, IN 46970 | 765-473-6528  
 15,072 Acres, 3,180 Acre Lake | Established 1968



**NOTE:** Slocum Bike Trail is located in hunting areas. Hunter orange is recommended during hunting seasons.



**OUR STORY**

This story includes thousands of years of human occupation along the Mississinewa River.

The underlying bedrock formed when a shallow ocean covered the region. Shell and coral debris accumulated, forming layers of limestone and dolomite.

The most recent ice age left behind a series of moraines, which dammed up glacial meltwater, creating Lake Maumee. The lake breached the dam in a torrent, leaving behind the path of today's Mississinewa River.

Since time immemorial the Myaamia (Miami) have hunted, gathered plants, planted crops, raised their families, and celebrated these lands.

One noted Myaamia woman was Frances Slocum. As a Quaker child, she was taken during a 1778 Pennsylvania attack by Delaware Indians. Sixty years later, a Myaamia woman named Mahkoonsihkwa, living on the river, revealed she was Frances Slocum.

By 1846, the Myaamia were forcibly removed, but Mahkoonsihkwa, her relatives, and others were allowed to remain. Myaamia families continue to live around Mississinewa Lake.

After the tribes' forced removal, settlers cut down the forests and planted crops in European-style farms. In 1846, Lorenzo D. Jacobs built a mill on the river. By 1872, the mill belonged to Nelson Conner, becoming Conner's Mill. Communities like Somerset grew, providing services to nearby farms.

In 1967, the Corps of Engineers completed a dam and reservoir to protect downstream towns from flooding. The state leases surrounding land for recreation and wildlife.

Today, managed habitats provide food, water, shelter, and space for wildlife. Food plots and constructed wetlands enhance wildlife diversity.

Whether hunting, camping, fishing, or hiking, Mississinewa Lake offers something for everyone.



**RULES & REGULATIONS**

- Please obey all property rules & regulations.

[on.IN.gov/INStateParksRules](http://on.IN.gov/INStateParksRules)



**ACTIVITIES & FACILITIES**

- Look for these icons on the map.

**BEACH:** Swimming is available Memorial Day through Labor Day. A modern beachhouse provides showers, changing area, restrooms and concessions. Shelterhouse, picnic tables, grills and volleyball courts are nearby.

**LAKE USE:** An annual lake-use permit is required for both motorized and non-motorized watercraft from the LaFontaine car top access to the dam.

**BOAT LAUNCH:** Each of the four state recreation areas has a concrete boat ramp. There are six car top access sites located in the resource management areas east of State Road 13.

**CAMPING:** Modern campgrounds with showers and restrooms. Full Hookup, Electric and Non-electric sites. Occupancy is limited to 14 consecutive nights. Playgrounds, horseshoe pit, volleyball pit, basketball courts and disc golf course available. A mooring area nearby. Reserve at [camp.IN.gov](http://camp.IN.gov).

**FISHING:** Fishing piers are available in Miami SRA during May and into October. State fishing license required.

**HIKING:** Marked trails are available all year.

**HUNTING:** All hunters are required by law to sign in and return a hunting permit card to a hunter sign-in station. Hunting is allowed in designated wildlife areas in season. No hunting is permitted in safety zones, seasonal refuges or restricted areas. Hunters are not required to sign in and out of the Corps hunting area.

**INTERPRETIVE NATURALIST SERVICE:** Summer programs available at the Miami modern campground. Program schedules available at [InterpretiveServices.IN.gov](http://InterpretiveServices.IN.gov) or (260) 468-2127.

**PICNIC AREAS:** Enjoy shady and scenic views of the lake with access to picnic tables, grills and water.

**SHELTERS:** There are two shelters in the Miami SRA and one shelter in the Frances Slocum SRA. Reserve at [camp.IN.gov](http://camp.IN.gov). The Corps of Engineers has two shelters, one at the Outlet Fishing Site and one at the Observation Mound Recreation Area. They can be used on a "first-come, first-served" basis, or reserved through the Corps of Engineers Office.



**HIKING TRAILS**

- For safety, please stay on marked trails.
- Bicycles prohibited on hiking trails.

TRAIL & DESCRIPTION	DISTANCE	DIFFICULTY
<b>Easy Access Trail</b>	0.4 mi.	Easy

Paved loop in the Frances Slocum picnic area. A brochure is available at the property office.

<b>Lost Sister Trail</b>	2.5 mi.	Moderate
--------------------------	---------	----------

Moderate, self-guided loop winds through mature woods with excellent wildflowers in spring. A brochure is available at the property office.

<b>Blue Heron Trail</b>	2.5 mi.	Moderate
-------------------------	---------	----------

This loop trail traverses moderate terrain and includes scenic views of the lake. A self-guided brochure is available at the property office.

<b>Moswa Trail</b>	1.5 mi.	Moderate
--------------------	---------	----------

Loop trail crosses meadows, follows Troyer's Creek and includes a spur through woods to a pond.

<b>Shepocannah Trail</b>	1.0 mi.	Moderate
--------------------------	---------	----------

Begins behind the modern campground and wanders through open meadows and young forest. Look for wildlife and summer wildflowers.

**Wildlife Area Hiking**

Parking lots available nearby and access lanes provide paths. Contact the property office for more information. Hunting is allowed in these areas. Hunter orange clothing is recommended.



**TRUE TALES**

- **LANDSCAPE FEATURE:** Over time, rushing river water washed away the soft limestone of the riverbank, creating pillar-like formations known as Cliffs of the Seven Pillars.
- **HISTORICAL FEATURE:** The Battle of Mississinewa occurred in 1812 after U.S. troops attacked Myaamia and Delaware villages along the river. The Myaamia retaliated, and the battle ended in a retreat by U.S. troops.
- **FLORA FEATURE:** Civilian Conservation Corps (CCC) crews planted thousands of trees at Mississinewa during the 1930s to restore the eroded landscape, and some of these still grow in the nearby Frances Slocum State Forest.

Memories made naturally.  
INDIANA STATE PARKS

**DISCOVER • CHALLENGE • EXPLORE**

**HOOSIER QUEST-Pin & Patch Program**

Each state park offers you the opportunity to complete tasks to earn a patch or property pin.

[on.IN.gov/hoosierquest](http://on.IN.gov/hoosierquest)

**BOOK YOUR STAY • RESERVE TODAY**

**GET OUT and GO CAMPING**

Call or go online to make your reservation for all types of

- Camping
- Family Cabins
- Shelters

Includes state parks, reservoirs and forests.

1-866-6campIN (1-866-622-6746)

[camp.IN.gov](http://camp.IN.gov)

**STAY IN at a STATE PARK INN**

Call or go online to make your reservation for a(n)

- State Park Inn
- Inns-managed Cabin

Seven State Parks include Inns: Brown County, Clifty Falls, Fort Harrison, McCormick's Creek, Spring Mill, Turkey Run and Pokagon.

1-877-lodges1 (1-877-563-4371)

[IndianalInns.com](http://IndianalInns.com)



For a full list of events, visit [interpretiveservices.IN.gov](http://interpretiveservices.IN.gov)



Please carry out all trash you produce to help keep the property clean and beautiful for all to enjoy!



**FOLLOW US**



OUTDOOR INDIANA Subscribe to Outdoor Indiana magazine today, Visit [OutdoorIndiana.org](http://OutdoorIndiana.org) or call 317-233-3046.

The programs, services, facilities, and activities of the Indiana Department of Natural Resources are available to everyone. DNR prohibits discrimination on the basis of race, color, national origin, age, sex, or disability. If you believe that you have been discriminated against in any program, activity, or facility as described above, or if you desire further information please write to: Department of Natural Resources, Executive Office, 402 W. Washington Street, W256, Indianapolis, IN 46204, (317) 232-4020.



**DNR PROPERTIES NEARBY**

- Find more DNR properties at [on.IN.gov/recfinder](http://on.IN.gov/recfinder).

**SALAMONIE LAKE**

hiking, boating, boat launch, boat rental, bridle trails, camping, interpretive center, picnicking, dump station, fishing, fishing pier

**J. EDWARD ROUSH FISH & WILDLIFE AREA**

Boating, boat ramp, fishing, hunting, camping, wildlife watching, shooting range



**IMPORTANT INFORMATION**

**DAM**

Type:	earth fill
Maximum height:	140 feet
Length:	8,000 feet
Drainage area above dam:	809 sq. miles

**OPERATING LEVELS**

	Elevation (Feet mean sea level)	Area (Acres)	Length (Miles)
Winter Pool	712	1,280	11
Summer Pool	737	3,180	20
Flood Pool	779	12,830	31

**PARTNERSHIPS**

The U.S. Corps of Engineers has developed a partnership in the management of the public land at Mississinewa Lake. Under a lease agreement, the Indiana DNR operates and maintains the recreational facilities and wildlife areas at the lake, except for the areas noted on the map.



**FRIENDS GROUP**

**Friends of Mississinewa Lake**

Join Friends of Mississinewa Lake to protect the natural and cultural heritage, and educate the public. For information, visit:

[on.IN.gov/INStateParksFriends](http://on.IN.gov/INStateParksFriends)



**MISSISSINEWA LAKE**



Mississinewa Lake  
4673 S. 625 E.  
Peru, IN 46970-9745

(765) 473-6528

[on.IN.gov/mississinewalake](http://on.IN.gov/mississinewalake)

[mississinewalake@dnr.IN.gov](mailto:mississinewalake@dnr.IN.gov)

[on.IN.gov/stateparks](http://on.IN.gov/stateparks)