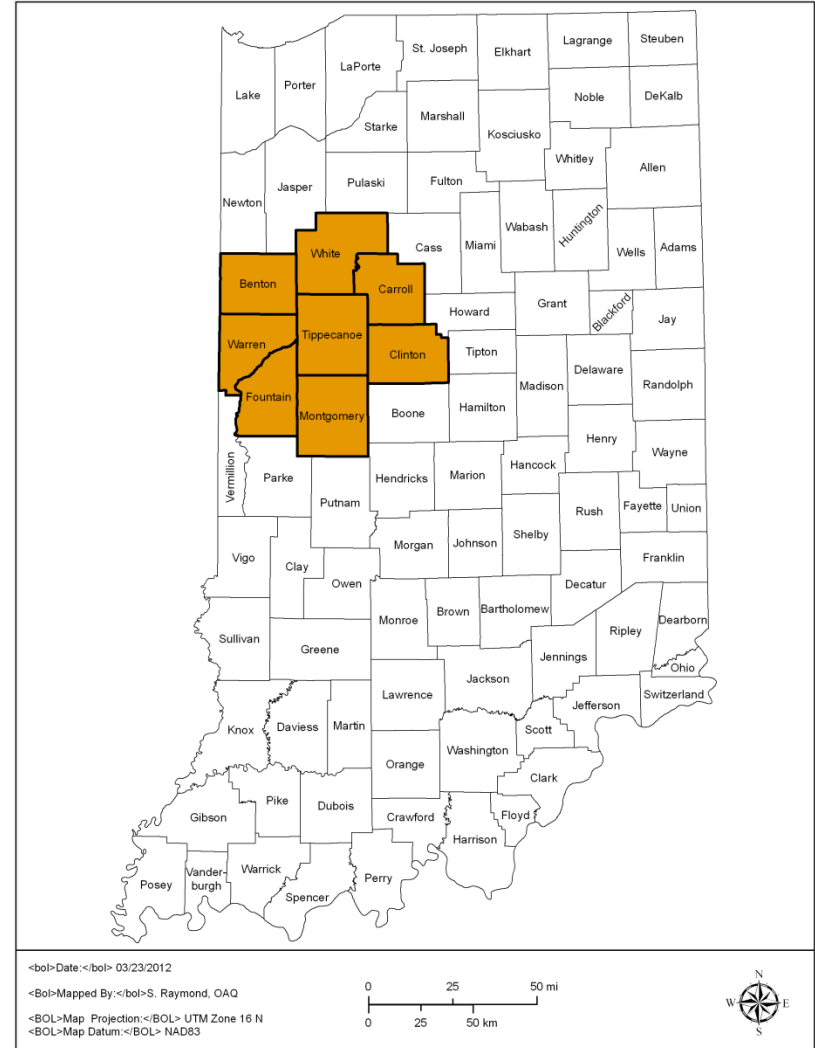




# Status of Indiana Air Quality

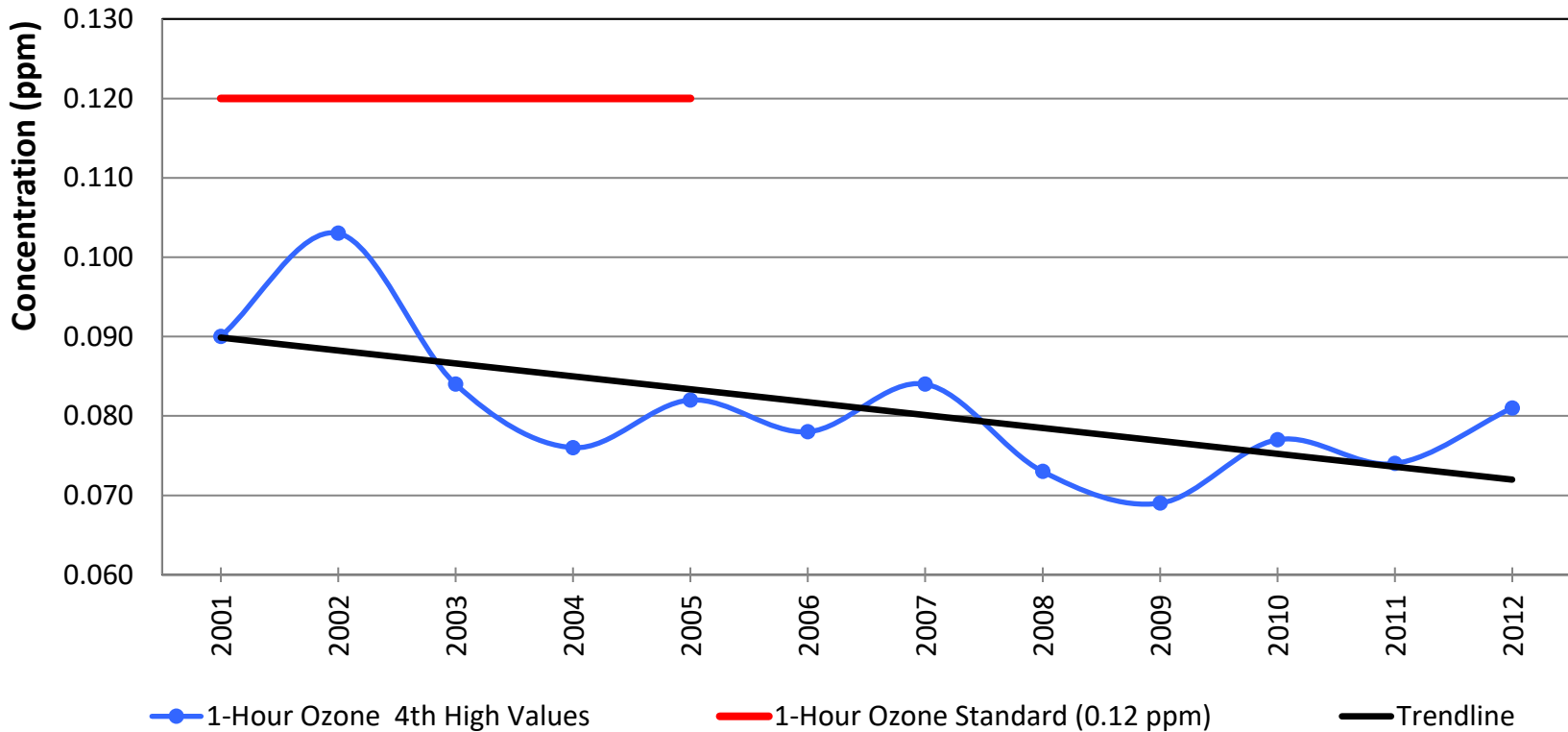
## Lower Northwest Indiana Region





# Ozone

## 1-Hour Ozone 4th High Values Lower Northwest Indiana

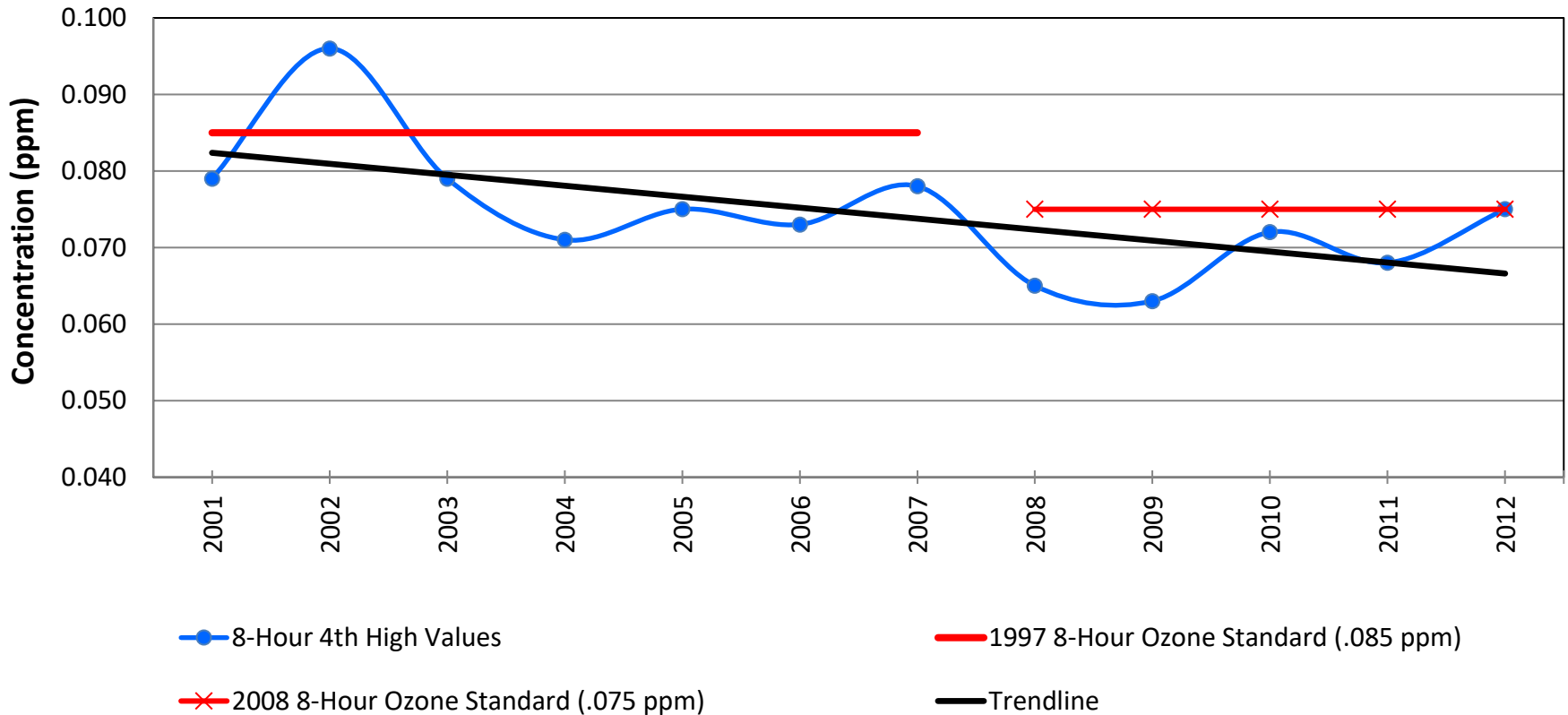


\* 1-Hour Ozone Standard Revoked in 2005.



# Ozone

## 8-Hour Ozone 4th High Values Lower Northwest Indiana

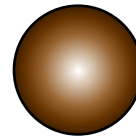
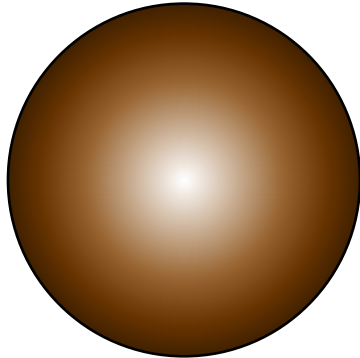


\* 8-Hour Ozone Standard Established in 1997.



# Changing Particulate Standards

| Name             | Total Suspended Particle (TSP) | PM <sub>10</sub> | PM <sub>2.5</sub>                   |
|------------------|--------------------------------|------------------|-------------------------------------|
| Dates            | 1970-1987                      | 1983-Present     | 1999-Present                        |
| Regulated Size   | 30 μm                          | 10 μm            | 2.5 μm                              |
| 24-Hour Standard | 260                            | 150              | 65 (1999-2005)<br>35 (2006-Present) |
| Annual Standard  | 75                             | 50               | 15                                  |

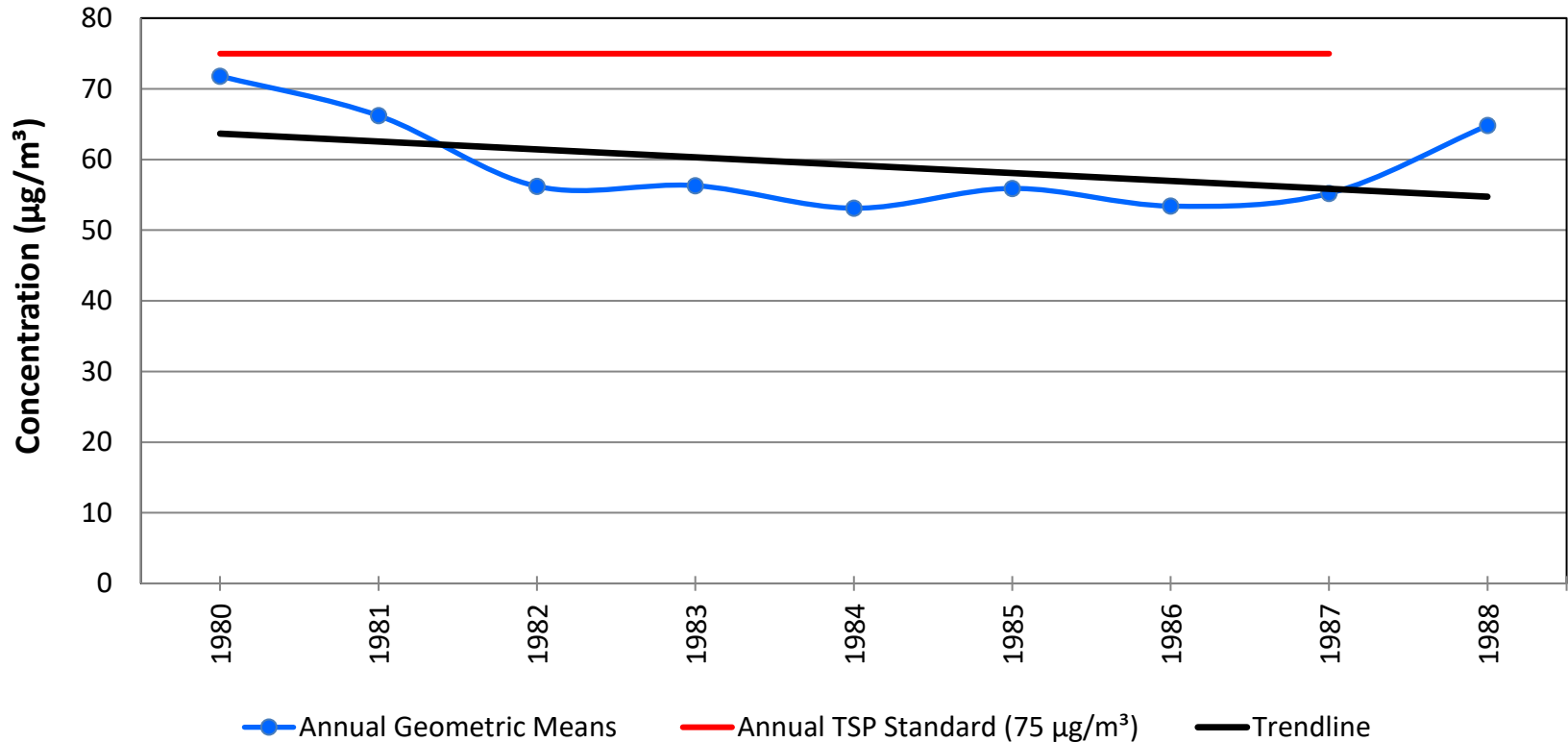


\*μm = micrograms



# Particulate Matter

## Annual Geometric Mean TSP Values Lower Northwest Indiana

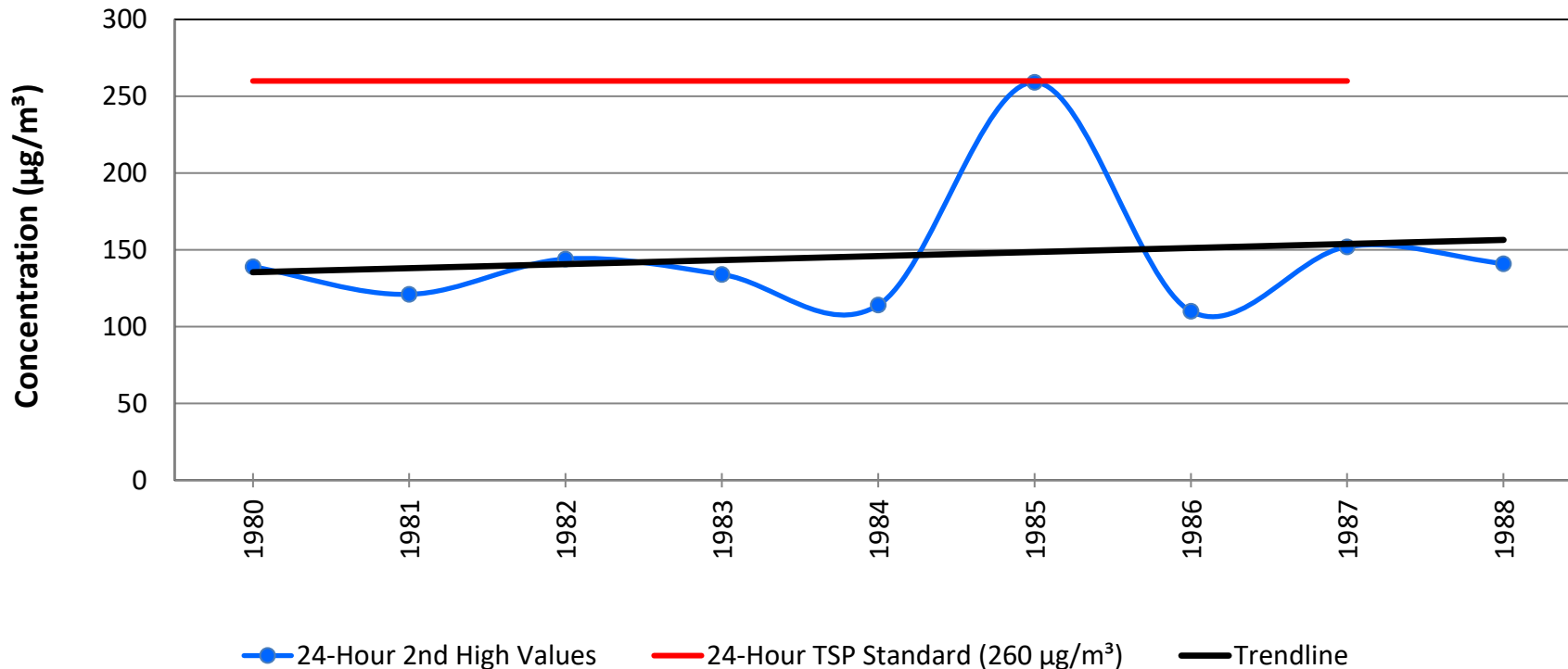


\*Annual TSP Standard Revoked in 1987.



# Particulate Matter

24-Hour TSP 2nd High Values  
Lower Northwest Indiana

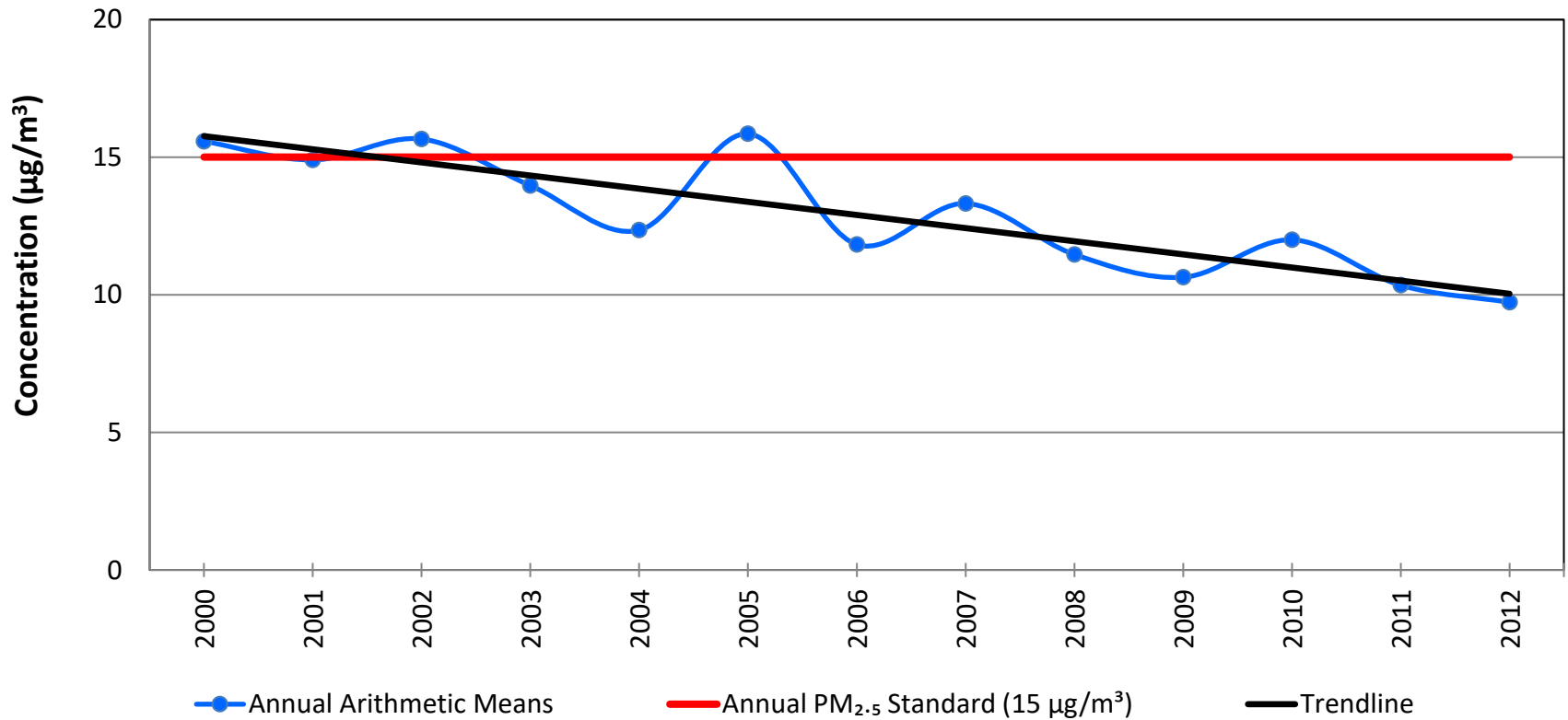


\*24-Hour TSP Standard Revoked in 1987.



# Particulate Matter

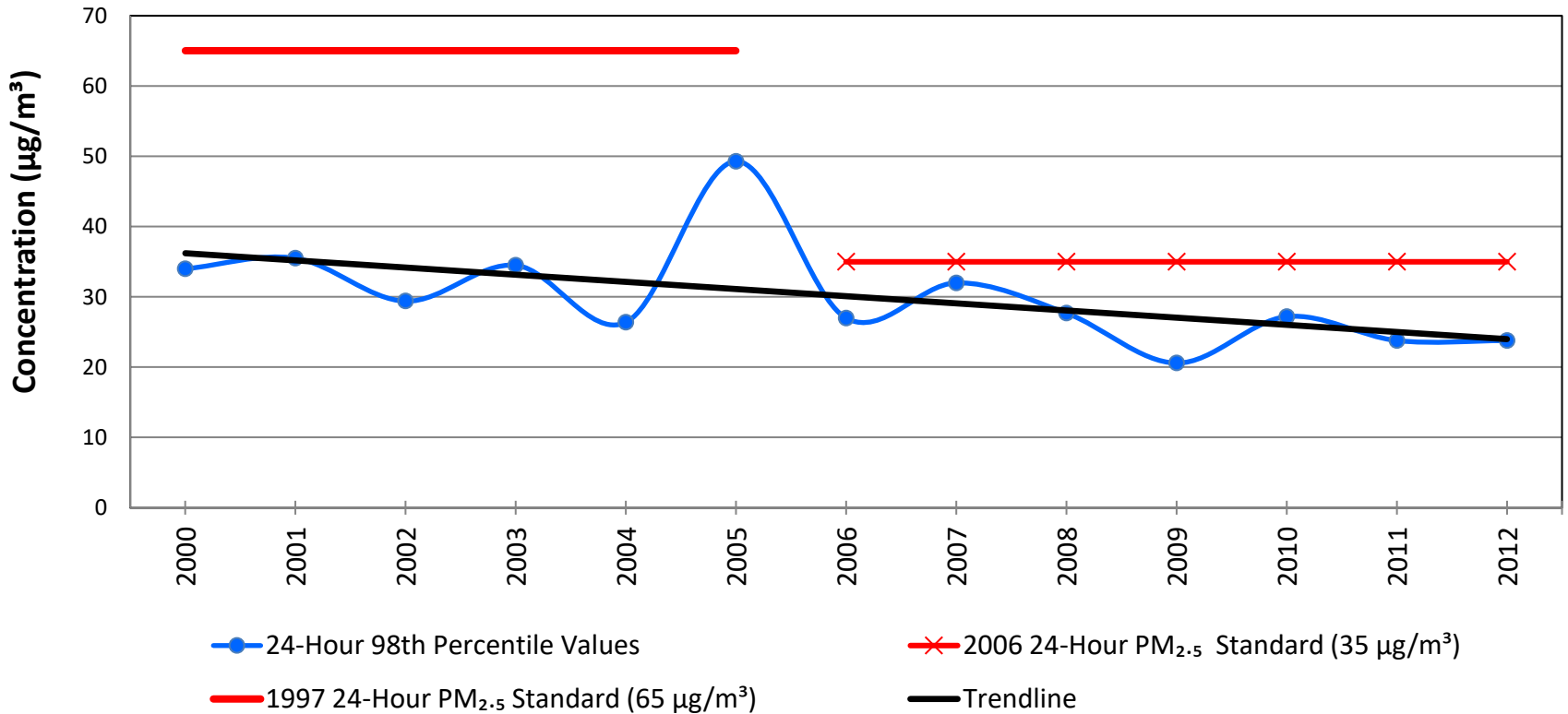
Annual Arithmetic Mean PM<sub>2.5</sub> Values  
Lower Northwest Indiana





# Particulate Matter

**24-Hour PM<sub>2.5</sub> 98th Percentile Values  
Lower Northwest Indiana**

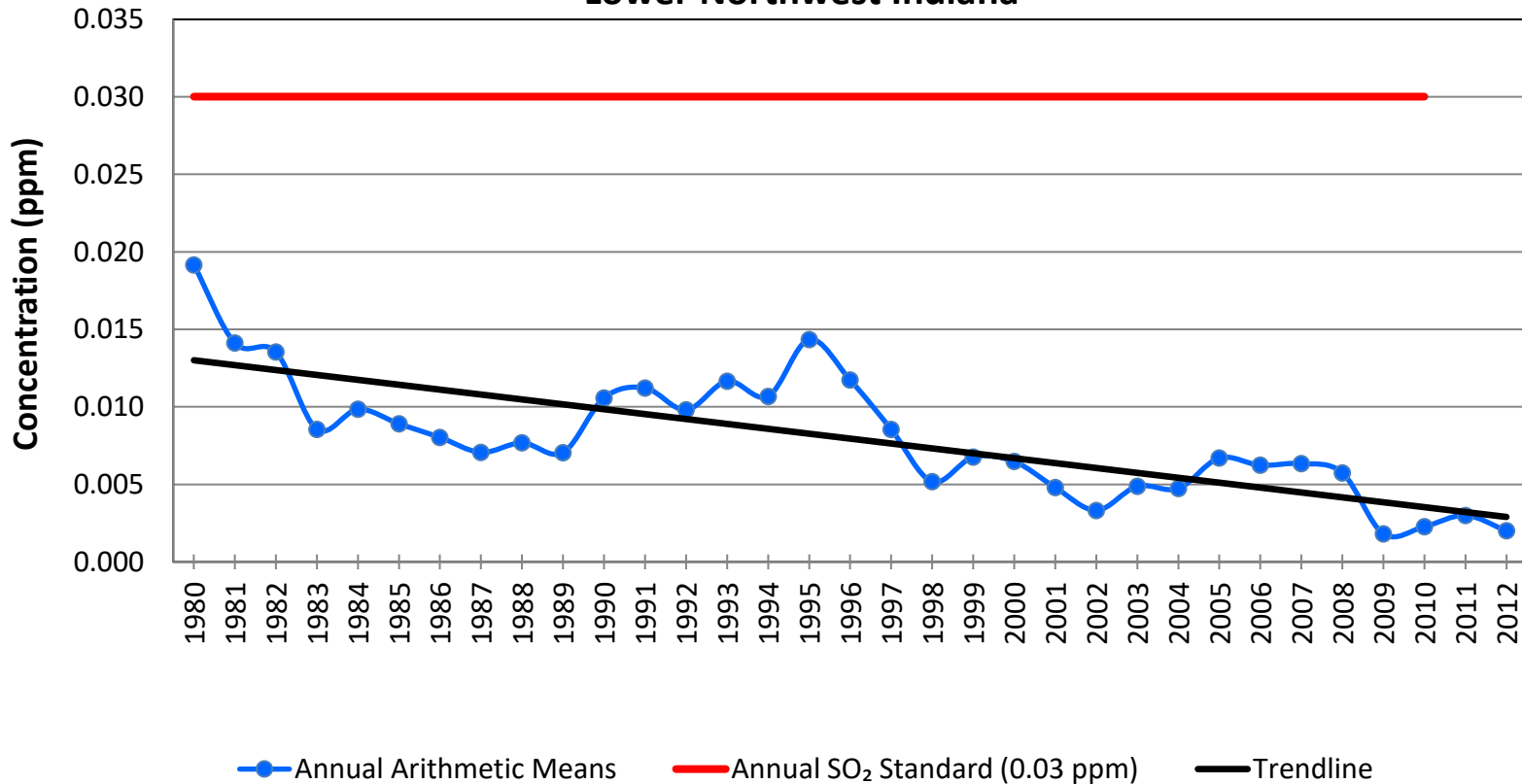






# Sulfur Dioxide

Annual Arithmetic Mean SO<sub>2</sub> Values  
Lower Northwest Indiana

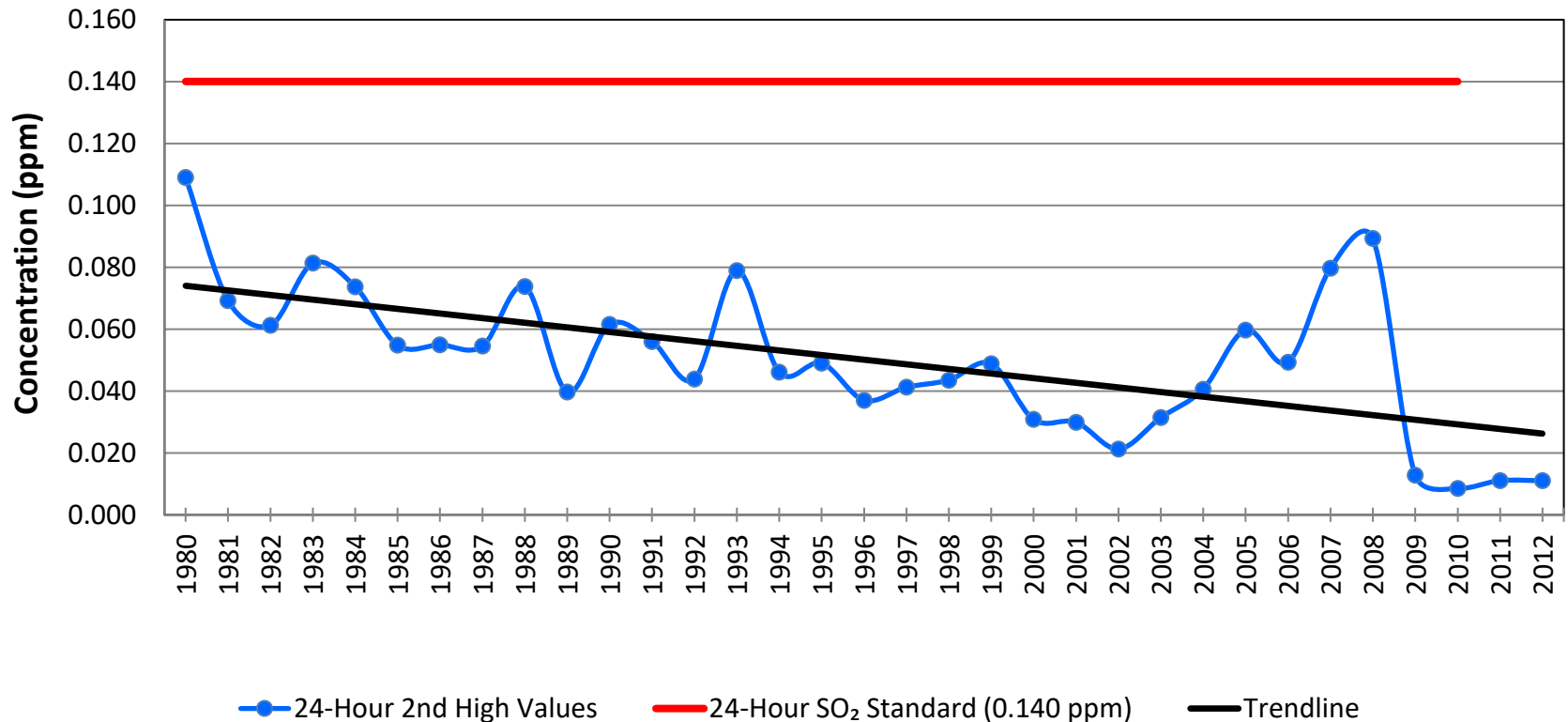


\*Annual SO<sub>2</sub> Standard Revoked in 2010.



# Sulfur Dioxide

24-Hour SO<sub>2</sub> 2nd High Values  
Lower Northwest Indiana

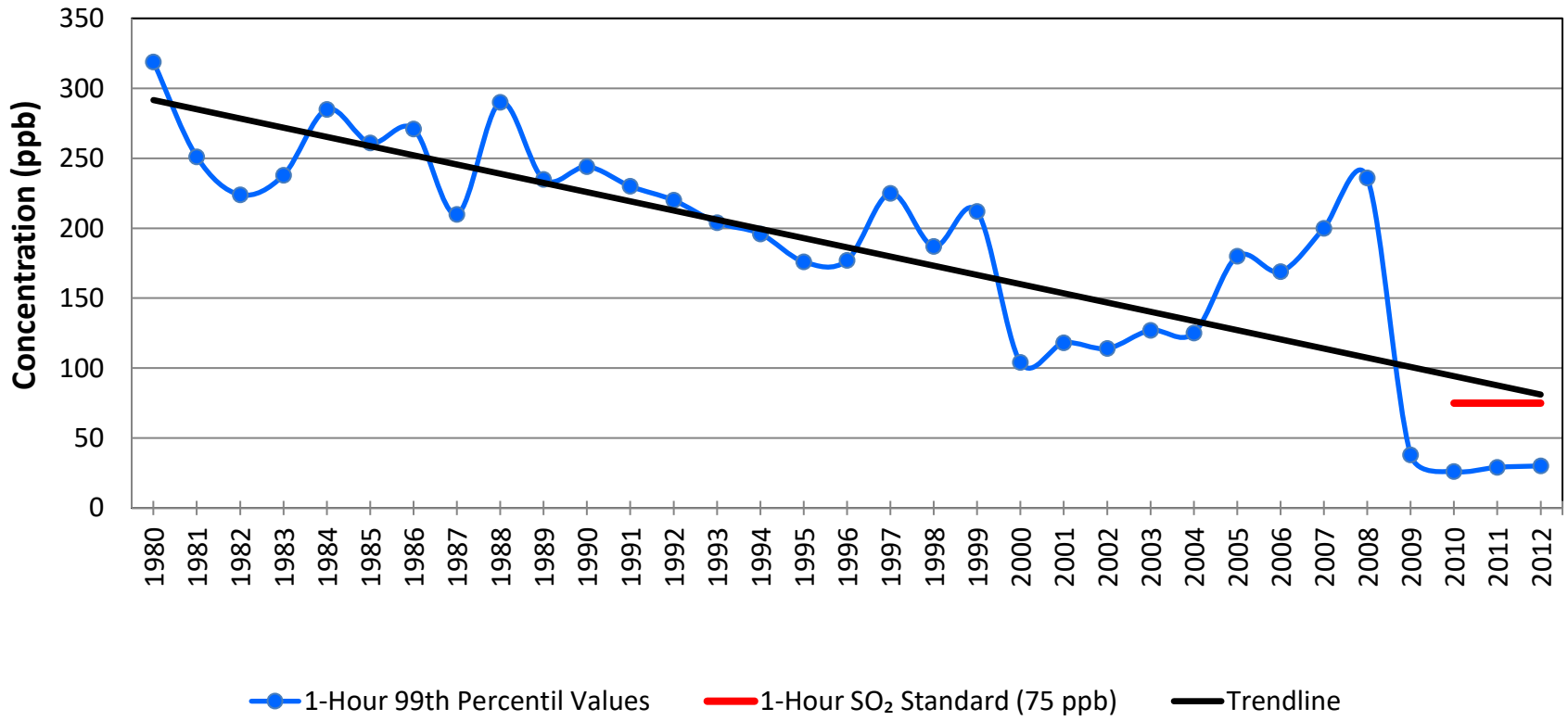


\*24-Hour SO<sub>2</sub> Standard Revoked in 2010.



# Sulfur Dioxide

Highest 1-Hour SO<sub>2</sub> 99th Percentile Values  
Lower Northwest Indiana



\*1-Hour SO<sub>2</sub> Standard Established in 2010.



# Air Quality and You

---

- To learn more about your air quality and what you can do to help, visit:

[Smogwatch.IN.gov](http://Smogwatch.IN.gov)

- To acquire additional information about air quality in Indiana and IDEM's role, visit:

[www.idem.IN.gov](http://www.idem.IN.gov)



# Contact Information for IDEM's Office of Air Quality

---

- To call please dial:

**(317) 233-0178**

- To write, please use this mailing address:

**IDEM, Office of Air Quality**

**100 North Senate Avenue**

**Indianapolis, IN 46204**