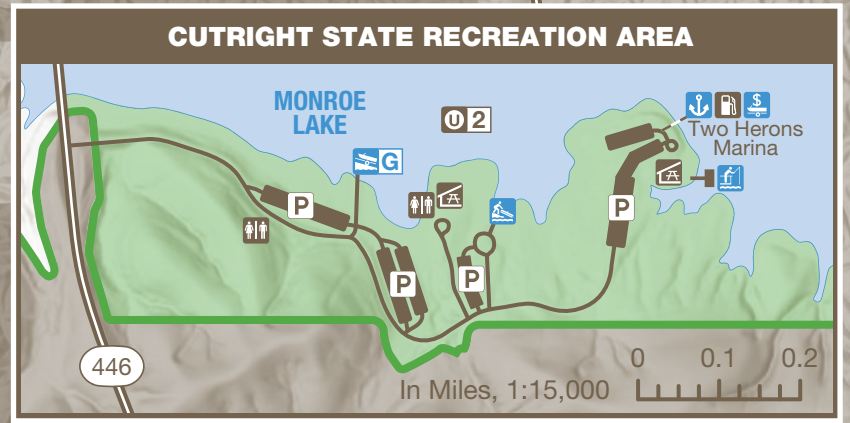
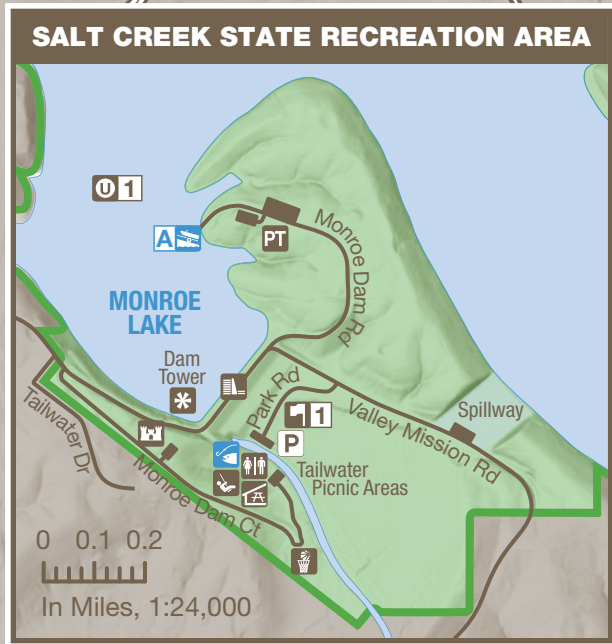
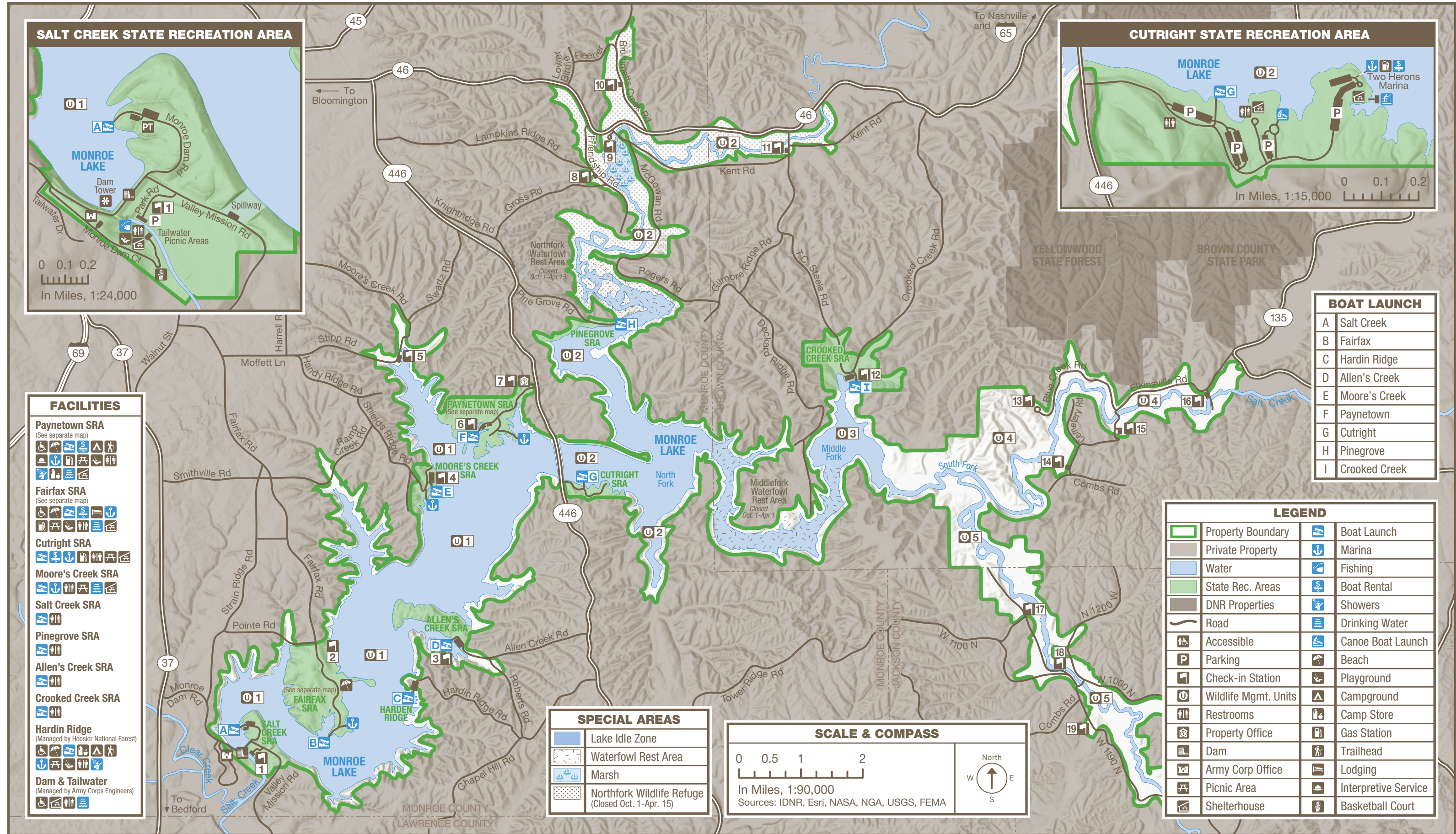


MONROE LAKE

4850 South State Road 446 | Bloomington, IN 47401 | 812-837-9546
23,952 Acres, 10,750 Acre Lake | Established 1966



FACILITIES	
Paynetown SRA (See separate map)	[Icons for Boat Launch, Marina, Fishing, Boat Rental, Showers, Drinking Water, Canoe Boat Launch, Beach, Playground, Campground, Camp Store, Gas Station, Trailhead, Lodging, Interpretive Service, Basketball Court]
Fairfax SRA (See separate map)	[Icons for Boat Launch, Marina, Fishing, Boat Rental, Showers, Drinking Water, Canoe Boat Launch, Beach, Playground, Campground, Camp Store, Gas Station, Trailhead, Lodging, Interpretive Service, Basketball Court]
Cutright SRA	[Icons for Boat Launch, Marina, Fishing, Boat Rental, Showers, Drinking Water, Canoe Boat Launch, Beach, Playground, Campground, Camp Store, Gas Station, Trailhead, Lodging, Interpretive Service, Basketball Court]
Moore's Creek SRA	[Icons for Boat Launch, Marina, Fishing, Boat Rental, Showers, Drinking Water, Canoe Boat Launch, Beach, Playground, Campground, Camp Store, Gas Station, Trailhead, Lodging, Interpretive Service, Basketball Court]
Salt Creek SRA	[Icons for Boat Launch, Marina, Fishing, Boat Rental, Showers, Drinking Water, Canoe Boat Launch, Beach, Playground, Campground, Camp Store, Gas Station, Trailhead, Lodging, Interpretive Service, Basketball Court]
Pinegrove SRA	[Icons for Boat Launch, Marina, Fishing, Boat Rental, Showers, Drinking Water, Canoe Boat Launch, Beach, Playground, Campground, Camp Store, Gas Station, Trailhead, Lodging, Interpretive Service, Basketball Court]
Allen's Creek SRA	[Icons for Boat Launch, Marina, Fishing, Boat Rental, Showers, Drinking Water, Canoe Boat Launch, Beach, Playground, Campground, Camp Store, Gas Station, Trailhead, Lodging, Interpretive Service, Basketball Court]
Crooked Creek SRA	[Icons for Boat Launch, Marina, Fishing, Boat Rental, Showers, Drinking Water, Canoe Boat Launch, Beach, Playground, Campground, Camp Store, Gas Station, Trailhead, Lodging, Interpretive Service, Basketball Court]
Hardin Ridge (Managed by Hoosier National Forest)	[Icons for Boat Launch, Marina, Fishing, Boat Rental, Showers, Drinking Water, Canoe Boat Launch, Beach, Playground, Campground, Camp Store, Gas Station, Trailhead, Lodging, Interpretive Service, Basketball Court]
Dam & Tailwater (Managed by Army Corps Engineers)	[Icons for Boat Launch, Marina, Fishing, Boat Rental, Showers, Drinking Water, Canoe Boat Launch, Beach, Playground, Campground, Camp Store, Gas Station, Trailhead, Lodging, Interpretive Service, Basketball Court]

BOAT LAUNCH	
A	Salt Creek
B	Fairfax
C	Hardin Ridge
D	Allen's Creek
E	Moore's Creek
F	Paynetown
G	Cutright
H	Pinegrove
I	Crooked Creek

LEGEND	
[Green Outline]	Property Boundary
[Brown Shaded]	Private Property
[Blue Shaded]	Water
[Light Green Shaded]	State Rec. Areas
[Dark Green Shaded]	DNR Properties
[Black Line]	Road
[Blue Icon]	Boat Launch
[Blue Icon]	Marina
[Blue Icon]	Fishing
[Blue Icon]	Boat Rental
[Blue Icon]	Showers
[Blue Icon]	Drinking Water
[Blue Icon]	Canoe Boat Launch
[Blue Icon]	Beach
[Blue Icon]	Playground
[Blue Icon]	Campground
[Blue Icon]	Camp Store
[Blue Icon]	Gas Station
[Blue Icon]	Trailhead
[Blue Icon]	Lodging
[Blue Icon]	Interpretive Service
[Blue Icon]	Basketball Court

SPECIAL AREAS	
[Blue Shaded]	Lake Idle Zone
[Light Green Shaded]	Waterfowl Rest Area
[Blue Shaded]	Marsh
[Dotted Shaded]	Northfork Wildlife Refuge (Closed Oct. 1-Apr. 15)





OUR STORY

The region's bedrock formed more than 350 million years ago, when layers of silt and sand were brought there by rivers and were cemented into impermeable siltstone and sandstone. Limestone, found in several property locations, represents a time when a warm, shallow ocean covered the region.

During the ice age, advancing glaciers stopped north of here. Some glacial meltwater contributed to eroding steep slopes; however, most of the erosion came from water that the bedrock kept from soaking into the ground.

Monroe Lake lies within the homeland of the Myaamia (Miami), who had temporary camps in the area. Other area tribes included Piankeshaw, Delaware, and Bodwéwadmí (Potawatomi.)

European settlers arrived. They were subsistence farmers, growing corn and sorghum, and owning hogs and chickens. Hunting and fishing supplemented their diet.

The rugged topography kept the region isolated.

Farmland in Salt Creek Valley was productive, but farming its surrounding steep slopes wasn't sustainable. Erosion removed the topsoil, and upland farms struggled. The Depression added hardship. During the 1930s, federal and State agencies acquired some of the depleted farmland.

In 1964, the U.S. Army Corps of Engineers (USACOE) constructed Monroe Lake for flood control and low flow augmentation. The lake is also a drinking water source for the city of Bloomington and a recreation destination.

The DNR leases approximately 24,000 acres of land for recreation and wildlife management. Forests, fields, and marshes are maintained for waterfowl, deer, and other wildlife.

Come here to boat, camp, hunt, fish, hike, or attend an interpretive program.



RULES & REGULATIONS

- Please obey all property rules & regulations.

on.IN.gov/INStateParksRules



ACTIVITIES & FACILITIES

- Look for these icons on the map.

BEACH: Swimming is available Memorial Day through Labor Day at the beaches in Paynetown and Fairfax recreation areas. Modern bathhouses at both locations provide showers, dressing facilities and restrooms. Swimming during unguarded times from sunrise to sunset is at your own risk. No swimming from sunset to sunrise.

BOAT LAUNCH: Available at nine locations. Lake permit required.

BOAT RENTAL: Several private operators with pontoons, fishing boats, jet skis, ski boats, canoe, kayaks, paddleboards and more.

CAMPING: Electricity, modern restrooms and showers, picnic table and grills available. Occupancy limited to 14 consecutive nights. Reserve at camp.IN.gov.

FISHING: Bass, bluegill, catfish, crappie, walleye and hybrid stripers are common. Ice fishing available when conditions present. State fishing license required.

HIKING: Easy to moderate marked trails are available for hiking all year. Vehicles, bicycles and horses are not permitted.

HUNTING: All hunters are required to register at check-in stations daily. Deer, grouse, turkey, squirrels, doves and rabbits are common. Excellent waterfowl hunting is available during the season. Hunting in Waterfowl Rest Areas by special permit only. Waterfowl hunting information available at Paynetown visitors center. Read and obey all signs.

INTERPRETIVE NATURALIST SERVICE: Explore the world of natural resources while enjoying interpretive and recreational programs. For program info, call 812-837-9967 or visit interpretiveservices.IN.gov.

MARINA: Seasonal mooring on docks or buoys available at Paynetown, Moore's Creek, Cutright and Fairfax SRAs. Fuel, concessions and rental boats available at Fairfax, Cutright and Paynetown. Pump-out stations available at Paynetown and Fairfax.

PICNIC AREAS: Tables, grills, toilet facilities, playfields and shelters available in varying areas. Reserve at camp.IN.gov.



HIKING TRAILS

- For safety, please stay on marked trails.
- Bicycles prohibited on hiking trails.

TRAIL & DESCRIPTION	SRA	DISTANCE	DIFFICULTY
Blue Bird Trail Forest and field.	Paynetown	1.25 mi.	Moderate

Tree Trek Trail Forest Ecosystem interpretive trail.	Paynetown	0.5 mi.	Easy
--	-----------	---------	------

Whitetail Trail Access trail for walk-in visitors.	Paynetown	1.0 mi.	Moderate
--	-----------	---------	----------

Turkey Trot Trail Hike-In/Boat-In.	Allens Creek	1.75 mi.	Moderate
--	--------------	----------	----------

Big Oak Trail Access trail for walk-in visitors.	Fairfax	1.0 mi.	Moderate
--	---------	---------	----------

Homestead Loop Wooded hike.	Fairfax	1.8 mi.	Moderate
---------------------------------------	---------	---------	----------

Quarry Extension Out-and-back.	Fairfax	0.4 mi.	Easy
--	---------	---------	------



DAM & LAKE INFORMATION

DAM	
Type:	earth fill
Maximum height:	93 feet
Length:	1,350 feet
Drainage area above dam:	441 sq. miles

OPERATING LEVELS			
	Elevation (Feet mean sea level)	Area (Acres)	Length (Miles)
Winter Pool	538	10,750	0
Summer Pool	556	10,750	0
Flood Pool	574	48,450	0

Memories made naturally.
INDIANA STATE PARKS

DISCOVER • CHALLENGE • EXPLORE

HOOSIER QUEST-Pin & Patch Program

Each state park offers you the opportunity to complete tasks to earn a patch or property pin.

on.IN.gov/hoosierquest

BOOK YOUR STAY • RESERVE TODAY

GET OUT and GO CAMPING

Call or go online to make your reservation for all types of

- Camping
- Family Cabins
- Shelters

Includes state parks, reservoirs and forests.

1-866-6campIN
(1-866-622-6746)

camp.IN.gov

STAY IN at a STATE PARK INN

Call or go online to make your reservation for a(n)

- State Park Inn
- Inns-managed Cabin

Seven State Parks include Inns: Brown County, Clifty Falls, Fort Harrison, McCormick's Creek, Spring Mill, Turkey Run and Pokagon.

1-877-lodges1
(1-877-563-4371)

IndianalInns.com

For a full list of events, visit interpretiveservices.IN.gov

CARRY IN CARRY OUT Please carry out all trash you produce to help keep the property clean and beautiful for all to enjoy!

FOLLOW US



OUTDOOR INDIANA Subscribe to Outdoor Indiana magazine today, Visit OutdoorIndiana.org or call 317-233-3046.

The programs, services, facilities, and activities of the Indiana Department of Natural Resources are available to everyone. DNR prohibits discrimination on the basis of race, color, national origin, age, sex, or disability. If you believe that you have been discriminated against in any program, activity, or facility as described above, or if you desire further information please write to: Department of Natural Resources, Executive Office, 402 W. Washington Street, W256, Indianapolis, IN 46204, (317) 232-4020.



DNR PROPERTIES NEARBY

- Find more DNR properties at on.IN.gov/recfinder.

YELLOWWOOD STATE FOREST

Mountain biking, horseback riding, hiking, wildlife watching, picnic area, playground, fishing, ice fishing, hunting, trapping, shelterhouse, boat launch, boat rentals, cabin rental, camping

BROWN COUNTY STATE PARK

Mountain biking, horseback riding, hiking, wildlife watching, interpretive services, nature center, playground, historic features, fishing, ice fishing, saddle barn, shelterhouses, swimming, cabins, camping, inn and restaurant



TRUE TALES

- **MOST INTERESTING FEATURE:** At normal pool level, Monroe Lake is about 10,750 acres. At full flood capacity, it grows to 48,450 acres.
- **CREATURE FEATURE:** In the late 1980s, a successful bald eagle reintroduction program began at Monroe Lake. Bald eagles had disappeared from Indiana by 1900. Today, bald eagles are seen at Monroe Lake and throughout Indiana.
- **LAND USE FEATURE:** Small fields of agricultural crops are maintained for wildlife use. Many of these fields are flooded in mid-October to create "floating buffets" where migrating waterfowl can feed more comfortably.



IMPORTANT INFORMATION

SRA GPS ADDRESSES: (Bloomington, 47401)

- PAYNETOWN** – 4850 S. State Rd. 446
- FAIRFAX** – 8955 S. Fairfax Rd.
- ALLENS CREEK** – 6391 E. Allens Creek Rd.
- CUTRIGHT** – 5505 S. State Rd. 446
- MOORE'S CREEK** – 7600 S. Shields Ridge Rd.
- SALT CREEK** – 1700 E. Monroe Dam Rd.,
- PINE GROVE** – 7699 E. Pine Grove Rd.
- CROOKED CREEK** – 6200 TC Steele Rd. Nashville, 47448



MONROE LAKE



Monroe Lake
Paynetown Visitors Center
4850 S. State Road 446
Bloomington, IN 47401

(812) 837-9546

on.IN.gov/monroelake

monroelake@dnr.IN.gov

on.IN.gov/stateparks