



Microcystins ELISA Summary Report

Office of Water Quality - Watershed Assessment and Planning Branch

Sample #	Location	Date Collected	Date Analyzed	Conc. (ppb)
AB29669	Deam Lake (Field Duplicate)	7/10/2017	7/12/2017	< 0.30
AB29670	Field Blank	7/10/2017	7/12/2017	< 0.30
AB29671	Fairfax SRA	7/10/2017	7/12/2017	< 0.30
AB29671LD	Fairfax (Lab Duplicate)	7/10/2017	7/12/2017	< 0.30
AB29672	Paynetown SRA	7/10/2017	7/12/2017	< 0.30
AB29673	Starve Hollow SRA	7/10/2017	7/12/2017	< 0.30
AB29674	Deam Lake SRA	7/10/2017	7/12/2017	< 0.30
AB29675	Hardy Lake SRA	7/10/2017	7/12/2017	0.43
AB29676	Whitewater Memorial SP	7/11/2017	7/12/2017	< 0.30
AB29677	Quakertown SRA	7/11/2017	7/12/2017	< 0.30
AB29678	Mounds SRA	7/11/2017	7/12/2017	0.64
AB29679	Raccoon Lake SRA	7/11/2017	7/12/2017	< 0.30
20170711LB	Lab Blank	7/11/2017	7/12/2017	< 0.30



Assay Calibration Report

Assay Information

Assay Name: Microcystins ADDA
Assay Mode: 4-Parameter Logistic
Normal: 0.1500 - 5.0000

Units: ng/mL
of decimals: 4
Assay Description:

Controls:

Normal Control

Standards:

Std1, Concentration = 0.0000, Minimum number to use: 2
Std2, Concentration = 0.1500, Minimum number to use: 2
Std3, Concentration = 0.4000, Minimum number to use: 2
Std4, Concentration = 1.0000, Minimum number to use: 2
Std5, Concentration = 2.0000, Minimum number to use: 2
Std6, Concentration = 5.0000, Minimum number to use: 2

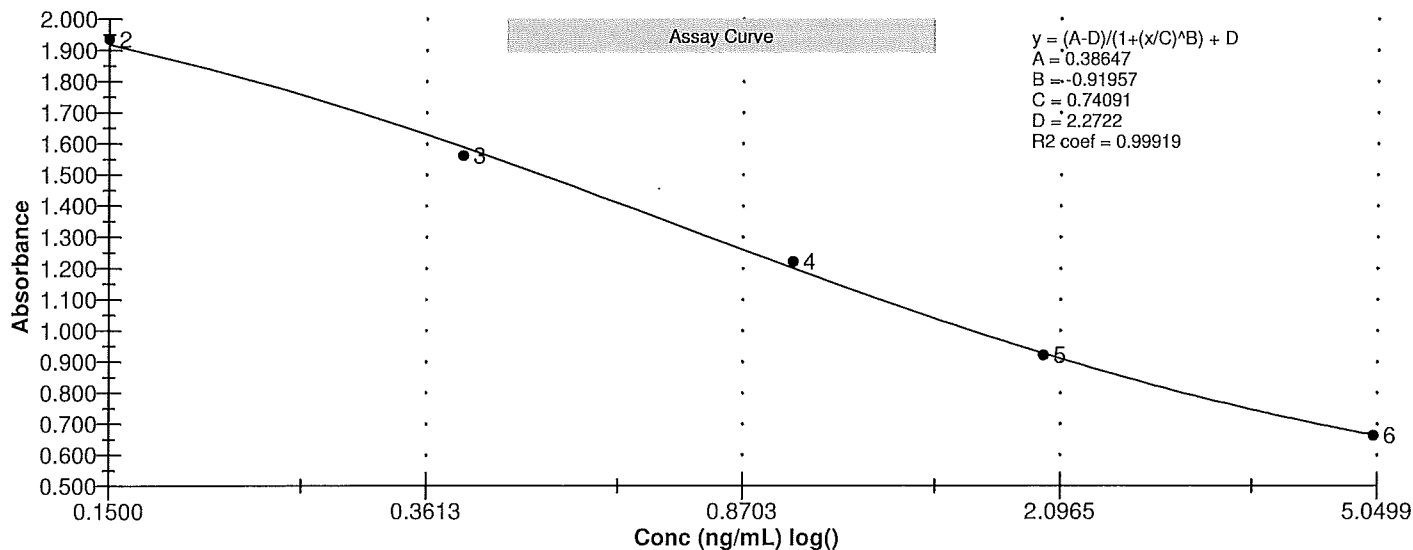
Curve valid interval: 7 days 0 hours

Axis Mode: Y = Abs, X = Log(Conc)

Assay Calibration and Statistics

Name	Absorbance	Concentration	Position
7/12/2017 2:25:53 PM			
Std1	2.269 Abs	0.0007 ng/mL	A01
Std2	1.937 Abs	0.1400 ng/mL	C01
Std2	1.934 Abs	0.1417 ng/mL	D01
Std3	1.583 Abs	0.4066 ng/mL	E01
Std3	1.541 Abs	0.4507 ng/mL	F01
Std4	1.189 Abs	1.0265 ng/mL	G01
Std4	1.253 Abs	0.8840 ng/mL	H01
Std5	0.914 Abs	2.0725 ng/mL	A02
Std5	0.928 Abs	1.9915 ng/mL	B02
Std6	0.640 Abs	> 5.0000 ng/mL	C02
Std6	0.685 Abs	4.5600 ng/mL	D02
7/12/2017 2:25:53 PM			
Normal Control	1.324 Abs	0.7500 ng/mL	F02
Normal Control	1.294 Abs	0.8040 ng/mL	E02

Name	Mean Abs	SD Abs	CV Abs	Mean Conc	SD Conc	CV Conc	Diff Conc
Std1	2.269			0.001			
Std2	1.936	0.002	0.11	0.141	0.001	0.85	-6.00
Std3	1.562	0.030	1.90	0.429	0.031	7.27	7.25
Std4	1.221	0.045	3.71	0.955	0.101	10.55	-4.50
Std5	0.921	0.010	1.07	2.032	0.057	2.82	1.60
Std6	0.663	0.032	4.80				-100.00
Normal Control	1.309	0.021	1.62	0.777	0.038	4.91	



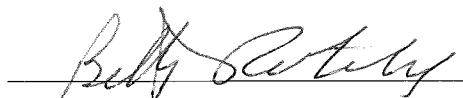


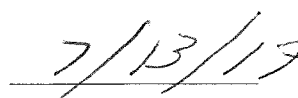
Test Report

Test Information

Name/ID	Assay	Absorbance	Concentration	Interpretation	Reference	Position
7/12/2017 2:25:53 PM						
Std1	Microcystins ADDA	2.269 Abs	< 0.0000 ng/mL		0.0000	A01
Std1	Microcystins ADDA	2.261 Abs	0.0019 ng/mL		0.0000	B01
Std2	Microcystins ADDA	1.937 Abs	0.1399 ng/mL		0.1500	C01
Std2	Microcystins ADDA	1.934 Abs	0.1415 ng/mL		0.1500	D01
Std3	Microcystins ADDA	1.583 Abs	0.4070 ng/mL		0.4000	E01
Std3	Microcystins ADDA	1.541 Abs	0.4511 ng/mL		0.4000	F01
Std4	Microcystins ADDA	1.189 Abs	1.0265 ng/mL		1.0000	G01
Std4	Microcystins ADDA	1.253 Abs	0.8840 ng/mL		1.0000	H01
Std5	Microcystins ADDA	0.914 Abs	2.0710 ng/mL		2.0000	A02
Std5	Microcystins ADDA	0.928 Abs	1.9900 ng/mL		2.0000	B02
Std6	Microcystins ADDA	0.640 Abs	> 5.0000 ng/mL		5.0000	C02
Std6	Microcystins ADDA	0.685 Abs	4.5600 ng/mL		5.0000	D02
Normal Control	Microcystins ADDA	1.294 Abs	0.8040 ng/mL			E02
Normal Control	Microcystins ADDA	1.324 Abs	0.7500 ng/mL			F02
AB29671	Microcystins ADDA	2.187 Abs	0.0269 ng/mL	LOW	0.1500 - 5.0000	G02
AB29671	Microcystins ADDA	2.251 Abs [2.2190] {2.0 C	0.0057 ng/mL [0.0158] {92.0 C	Low [Low]	0.1500 - 5.0000	H02
AB29672	Microcystins ADDA	2.189 Abs	0.0261 ng/mL	LOW	0.1500 - 5.0000	A03
AB29672	Microcystins ADDA	2.245 Abs [2.2170] {1.8 C	0.0075 ng/mL [0.0165] {78.3 C	Low [Low]	0.1500 - 5.0000	B03
AB29673	Microcystins ADDA	2.081 Abs	0.0690 ng/mL	LOW	0.1500 - 5.0000	C03
AB29673	Microcystins ADDA	1.962 Abs [2.0215] {4.2 C	0.1265 ng/mL [0.0964] {41.6 C	Low [Low]	0.1500 - 5.0000	D03
AB29674	Microcystins ADDA	2.068 Abs	0.0748 ng/mL	LOW	0.1500 - 5.0000	E03
AB29674	Microcystins ADDA	2.134 Abs [2.1010] {2.2 C	0.0469 ng/mL [0.0605] {32.4 C	Low [Low]	0.1500 - 5.0000	F03
AB29675	Microcystins ADDA	1.549 Abs	0.4421 ng/mL		0.1500 - 5.0000	G03
AB29675	Microcystins ADDA	1.571 Abs [1.5600] {1.0 C	0.4190 ng/mL [0.4305] {3.8 CV		0.1500 - 5.0000	H03
AB29669	Microcystins ADDA	2.110 Abs	0.0567 ng/mL	LOW	0.1500 - 5.0000	A04
AB29669	Microcystins ADDA	2.090 Abs [2.1000] {0.7 C	0.0652 ng/mL [0.0609] {9.9 CV	Low [Low]	0.1500 - 5.0000	B04
AB29670	Microcystins ADDA	2.206 Abs	0.0202 ng/mL	LOW	0.1500 - 5.0000	C04
AB29670	Microcystins ADDA	2.125 Abs [2.1655] {2.6 C	0.0505 ng/mL [0.0347] {60.6 C	Low [Low]	0.1500 - 5.0000	D04
AB29676	Microcystins ADDA	1.869 Abs	0.1797 ng/mL		0.1500 - 5.0000	E04
AB29676	Microcystins ADDA	1.850 Abs [1.8595] {0.7 C	0.1917 ng/mL [0.1857] {4.6 CV		0.1500 - 5.0000	F04
AB29677	Microcystins ADDA	1.995 Abs	0.1095 ng/mL	LOW	0.1500 - 5.0000	G04
AB29677	Microcystins ADDA	2.010 Abs [2.0025] {0.5 C	0.1020 ng/mL [0.1057] {5.0 CV	Low [Low]	0.1500 - 5.0000	H04
AB29678	Microcystins ADDA	1.342 Abs	0.7195 ng/mL		0.1500 - 5.0000	A05
AB29678	Microcystins ADDA	1.442 Abs [1.3920] {5.1 C	0.5705 ng/mL [0.6410] {16.3 C		0.1500 - 5.0000	B05
AB29679	Microcystins ADDA	1.869 Abs	0.1797 ng/mL		0.1500 - 5.0000	C05
AB29679	Microcystins ADDA	1.834 Abs [1.8515] {1.3 C	0.2020 ng/mL [0.1907] {8.3 CV		0.1500 - 5.0000	D05
AB29914	Microcystins ADDA	1.987 Abs	0.1135 ng/mL	LOW	0.1500 - 5.0000	E05
AB29914	Microcystins ADDA	2.191 Abs [2.0890] {6.9 C	0.0254 ng/mL [0.0656] {89.7 C	Low [Low]	0.1500 - 5.0000	F05
20170711LB	Microcystins ADDA	2.240 Abs	0.0090 ng/mL	LOW	0.1500 - 5.0000	G05
20170711LB	Microcystins ADDA	2.195 Abs [2.2175] {1.4 C	0.0240 ng/mL [0.0162] {64.3 C	Low [Low]	0.1500 - 5.0000	H05
AB29671LD	Microcystins ADDA	2.183 Abs	0.0282 ng/mL	LOW	0.1500 - 5.0000	A06
AB29671LD	Microcystins ADDA	2.251 Abs [2.2170] {2.2 C	0.0057 ng/mL [0.0165] {93.9 C	Low [Low]	0.1500 - 5.0000	B06

The data in this report is preliminary without a quality control report. This data is not warranted for accuracy or other purposes.


Laboratory Analyst Signature


Date