



Microcystins ELISA Summary Report

Office of Water Quality - Watershed Assessment and Planning Branch

Sample #	Location	Date Collected	Date Analyzed	Conc. (ppb)
AB25342	Fairfax SRA	5/31/2016	6/2/2016	< 0.15
AB25343	Paynetown SRA	5/31/2016	6/2/2016	< 0.15
AB25344	Hardy Lake SRA	5/31/2016	6/2/2016	0.23
AB25345	Raccoon Lake SRA	6/1/2016	6/2/2016	< 0.15
AB25346	Whitewater Memorial SP	6/1/2016	6/2/2016	< 0.15
AB25347	Quakertown SRA	6/1/2016	6/2/2016	0.57
AB25348	Mounds SRA	6/1/2016	6/2/2016	1.0
AB25349	Starve Hollow SRA	5/31/2016	6/2/2016	< 0.15
AB25350	Deam Lake SRA	5/31/2016	6/2/2016	< 0.15
AB25350LD	Deam Lake (Lab Duplicate)	5/31/2016	6/2/2016	< 0.15
AB25351	Field Blank	5/31/2016	6/2/2016	< 0.15
AB25352	Hardy Lake (Field Duplicate)	5/31/2016	6/2/2016	< 0.15
20160531LB	Lab Blank	5/31/2016	6/2/2016	< 0.15



Assay Calibration Report

Assay Information

Assay Name: Microcystins ADDA Units: ng/mL
Assay Mode: 4-Parameter Logistic # of decimals: 4
Normal: 0.1500 - 5.0000 Assay Description:

Controls:

Normal Control

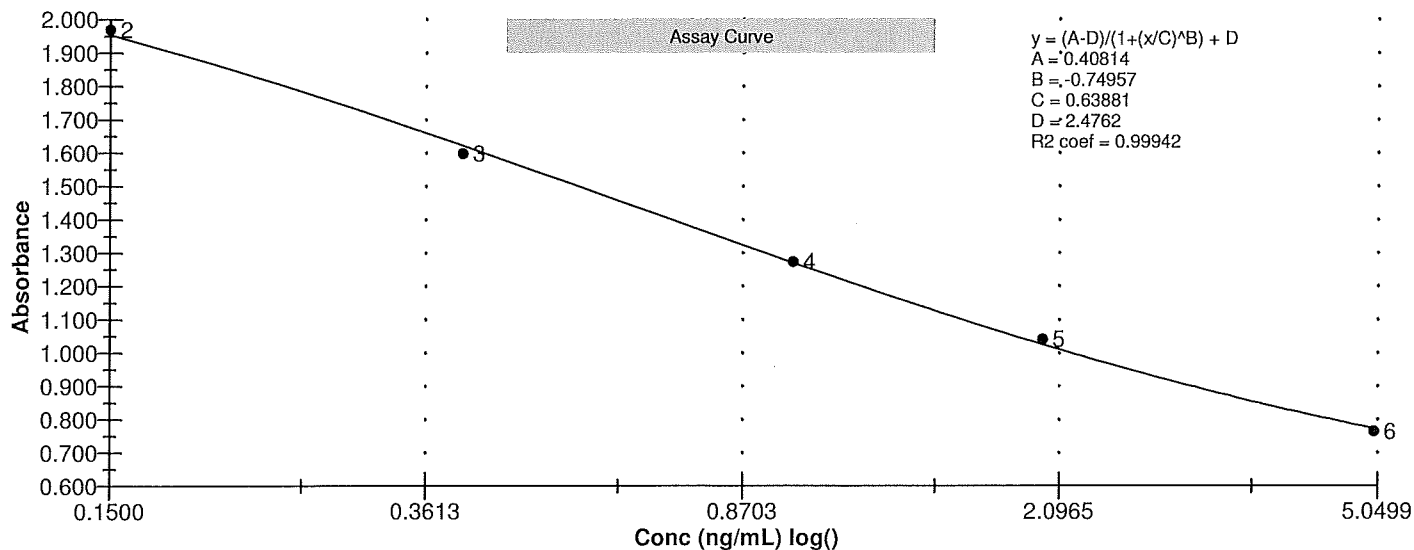
Standards:

Std1, Concentration = 0.0000, Minimum number to use: 2
Std2, Concentration = 0.1500, Minimum number to use: 2
Std3, Concentration = 0.4000, Minimum number to use: 2
Std4, Concentration = 1.0000, Minimum number to use: 2
Std5, Concentration = 2.0000, Minimum number to use: 2
Std6, Concentration = 5.0000, Minimum number to use: 2
Curve valid interval: 7 days 0 hours
Axis Mode: Y = Abs, X = Log(Conc)

Assay Calibration and Statistics

Name	Absorbance	Concentration	Position
6/2/2016 12:55:45 PM			
Std1	2.400 Abs	0.0082 ng/mL	A01
Std1	2.548 Abs	< 0.0000 ng/mL	B01
Std2	1.947 Abs	0.1538 ng/mL	C01
Std2	1.994 Abs	0.1305 ng/mL	D01
Std3	1.630 Abs	0.3913 ng/mL	E01
Std3	1.566 Abs	0.4635 ng/mL	F01
Std4	1.308 Abs	0.9050 ng/mL	G01
Std4	1.238 Abs	1.0895 ng/mL	H01
Std5	1.037 Abs	1.9280 ng/mL	A02
Std5	1.046 Abs	1.8760 ng/mL	B02
Std6	0.771 Abs	> 5.0000 ng/mL	C02
Std6	0.757 Abs	> 5.0000 ng/mL	D02
6/2/2016 12:55:45 PM			
Normal Control	1.281 Abs	0.9715 ng/mL	F02
Normal Control	1.362 Abs	0.7860 ng/mL	E02

Name	Mean Abs	SD Abs	CV Abs	Mean Conc	SD Conc	CV Conc	Diff Conc
Std1	2.474	0.105	4.23				
Std2	1.970	0.033	1.69	0.142	0.016	11.59	-5.33
Std3	1.598	0.045	2.83	0.427	0.051	11.95	6.75
Std4	1.273	0.049	3.89	0.997	0.130	13.08	-0.30
Std5	1.041	0.006	0.61	1.902	0.037	1.93	-4.90
Std6	0.764	0.010	1.30				-100.00
Normal Control	1.322	0.057	4.33	0.879	0.131	14.93	





Test Report

Test Information

Name/ID	Assay	Absorbance	Concentration	Interpretation	Reference	Position
6/2/2016 12:55:45 PM						
Std1	Microcystins ADDA	2.400 Abs	0.0082 ng/mL		0.0000	A01
Std1	Microcystins ADDA	2.548 Abs	< 0.0000 ng/mL		0.0000	B01
Std2	Microcystins ADDA	1.947 Abs	0.1538 ng/mL		0.1500	C01
Std2	Microcystins ADDA	1.994 Abs	0.1305 ng/mL		0.1500	D01
Std3	Microcystins ADDA	1.630 Abs	0.3913 ng/mL		0.4000	E01
Std3	Microcystins ADDA	1.566 Abs	0.4635 ng/mL		0.4000	F01
Std4	Microcystins ADDA	1.308 Abs	0.9050 ng/mL		1.0000	G01
Std4	Microcystins ADDA	1.238 Abs	1.0895 ng/mL		1.0000	H01
Std5	Microcystins ADDA	1.037 Abs	1.9280 ng/mL		2.0000	A02
Std5	Microcystins ADDA	1.046 Abs	1.8760 ng/mL		2.0000	B02
Std6	Microcystins ADDA	0.771 Abs	> 5.0000 ng/mL		5.0000	C02
Std6	Microcystins ADDA	0.757 Abs	> 5.0000 ng/mL		5.0000	D02
Normal Control	Microcystins ADDA	1.362 Abs	0.7860 ng/mL			E02
Normal Control	Microcystins ADDA	1.281 Abs	0.9715 ng/mL			F02
AB25342	Microcystins ADDA	2.183 Abs	0.0578 ng/mL	LOW	0.1500 - 5.0000	G02
AB25342	Microcystins ADDA	2.396 Abs [2.2895] {6.6 C	0.0088 ng/mL [0.0293] {104.0 C	Low [Low]	0.1500 - 5.0000	H02
AB25343	Microcystins ADDA	2.378 Abs	0.0117 ng/mL	LOW	0.1500 - 5.0000	A03
AB25343	Microcystins ADDA	2.262 Abs [2.3200] {3.5 C	0.0359 ng/mL [0.0226] {71.9 C	Low [Low]	0.1500 - 5.0000	B03
AB25344	Microcystins ADDA	1.752 Abs	0.2800 ng/mL		0.1500 - 5.0000	C03
AB25344	Microcystins ADDA	1.874 Abs [1.8130] {4.8 C	0.1950 ng/mL [0.2347] {25.3 C		0.1500 - 5.0000	D03
AB25345	Microcystins ADDA	2.193 Abs	0.0548 ng/mL	LOW	0.1500 - 5.0000	E03
AB25345	Microcystins ADDA	2.240 Abs [2.2165] {1.5 C	0.0415 ng/mL [0.0480] {19.5 C	Low [Low]	0.1500 - 5.0000	F03
AB25346	Microcystins ADDA	2.578 Abs	< 0.0000 ng/mL	Out(LR)	0.1500 - 5.0000	G03
AB25346	Microcystins ADDA	2.279 Abs [2.4285] {8.7 C	0.0318 ng/mL [0.0043]	Low [Low]	0.1500 - 5.0000	H03
AB25347	Microcystins ADDA	1.490 Abs	0.5645 ng/mL		0.1500 - 5.0000	A04
AB25347	Microcystins ADDA	1.479 Abs [1.4845] {0.5 C	0.5810 ng/mL [0.5725] {2.0 CV		0.1500 - 5.0000	B04
AB25348	Microcystins ADDA	1.246 Abs	1.0665 ng/mL		0.1500 - 5.0000	C04
AB25348	Microcystins ADDA	1.298 Abs [1.2720] {2.9 C	0.9290 ng/mL [0.9950] {9.7 CV		0.1500 - 5.0000	D04
AB25349	Microcystins ADDA	2.414 Abs	0.0062 ng/mL	LOW	0.1500 - 5.0000	E04
AB25349	Microcystins ADDA	2.167 Abs [2.2905] {7.6 C	0.0628 ng/mL [0.0291] {116.0 C	Low [Low]	0.1500 - 5.0000	F04
AB25350	Microcystins ADDA	2.209 Abs	0.0501 ng/mL	LOW	0.1500 - 5.0000	G04
AB25350	Microcystins ADDA	2.409 Abs [2.3090] {6.1 C	0.0069 ng/mL [0.0249] {107.2 C	Low [Low]	0.1500 - 5.0000	H04
AB25350LD	Microcystins ADDA	2.357 Abs	0.0154 ng/mL	LOW	0.1500 - 5.0000	A05
AB25350LD	Microcystins ADDA	2.320 Abs [2.3385] {1.1 C	0.0226 ng/mL [0.0189] {26.8 C	Low [Low]	0.1500 - 5.0000	B05
AB25351	Microcystins ADDA	2.292 Abs	0.0288 ng/mL	LOW	0.1500 - 5.0000	C05
AB25351	Microcystins ADDA	2.409 Abs [2.3505] {3.5 C	0.0069 ng/mL [0.0166] {86.8 C	Low [Low]	0.1500 - 5.0000	D05
AB25352	Microcystins ADDA	2.152 Abs	0.0677 ng/mL	LOW	0.1500 - 5.0000	E05
AB25352	Microcystins ADDA	2.183 Abs [2.1675] {1.0 C	0.0578 ng/mL [0.0627] {11.2 C	Low [Low]	0.1500 - 5.0000	F05
20160531LB	Microcystins ADDA	2.247 Abs	0.0397 ng/mL	LOW	0.1500 - 5.0000	G05
20160531LB	Microcystins ADDA	2.334 Abs [2.2905] {2.7 C	0.0198 ng/mL [0.0291] {47.3 C	Low [Low]	0.1500 - 5.0000	H05
AB25348 2x	Microcystins ADDA	1.890 Abs	0.1854 ng/mL		0.1500 - 5.0000	A06
AB25348 2x	Microcystins ADDA	1.863 Abs [1.8765] {1.0 C	0.2017 ng/mL [0.1935] {6.0 CV		0.1500 - 5.0000	B06

The data in this report is preliminary without a quality control report. This data is not warranted for accuracy or other purposes.

Laboratory Analyst Signature

Date