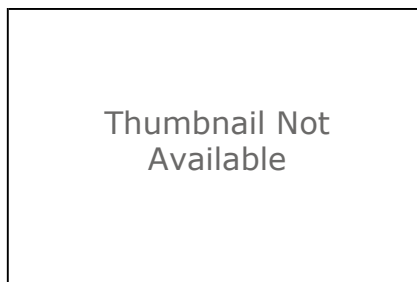


Potentiometric Surface Map of the Unconsolidated Aquifers of Benton County, Indiana

Shapefile



Tags

Unconsolidated potentiometric surface, Benton County, Indiana, USA

Summary

Display and/or analyses requiring spatial distribution of potentiometric surface elevations in Benton County.

Description

This file is a digital geospatial polyline coverage of the unconsolidated potentiometric surface elevations mapped for Benton County in Indiana.

Credits

There are no credits for this item.

Use limitations

Acknowledgement of the following agency in products derived from these data: Indiana Department of Natural Resources, Division of Water. This map was compiled by staff of the Indiana Department of Natural Resources, Division of Water using data believed to be reasonably accurate. However, a degree of error is inherent in all maps. This product is distributed "as-is" without warranties of any kind, either expressed or implied. The maps are intended for use only at the published scale. The information on these media is proprietary to the State of Indiana, Indiana Department of Natural Resources, Division of Water. Any copying, adaptation, or distribution of these data without the express written consent of IDNR-DOW is discouraged. It is not recommended that these data be used for purposes other than general estimate of static water level elevations. Site specific conditions may vary considerably from mapped estimates.

Extent

West	-87.508847	East	-87.093846
North	40.737230	South	40.474753

Scale Range

Maximum (zoomed in)	1:5,000
Minimum (zoomed out)	1:150,000,000

ArcGIS Metadata ►

Topics and Keywords ►

* CONTENT TYPE Downloadable Data

PLACE KEYWORDS Benton County, Indiana, USA

THEME KEYWORDS Unconsolidated potentiometric surface

[Hide Topics and Keywords ▲](#)

Citation ►

TITLE Potentiometric Surface Map of the Unconsolidated Aquifers of Benton County, Indiana

PUBLICATION DATE 2015-01-01

EDITION 1

PRESENTATION FORMATS digital map

FGDC GEOSPATIAL PRESENTATION FORMAT vector digital data

SERIES

NAME Unconsolidated Potentiometric Surface Map

ISSUE PSM 50-A

OTHER CITATION DETAILS

This map was compiled from multiple unpublished work maps based on USGS quadrangles at 1:24,000 scale: Ambia, Boswell, Chatterton, Darrow, Earl Park, Fowler, Mount Gilboa, Otterbein, Pine Village, Round Grove, Stockland, Tab, Templeton, Templeton NE and Wadena.

[Hide Citation ▲](#)

Citation Contacts ►

RESPONSIBLE PARTY

ORGANIZATION'S NAME Randal D. Maier, IDNR Division of Water, Resource Assessment Section

CONTACT'S ROLE originator

RESPONSIBLE PARTY

ORGANIZATION'S NAME Indiana Department of Natural Resources, Division of Water

CONTACT'S ROLE publisher

CONTACT INFORMATION ►

ADDRESS

DELIVERY POINT Indianapolis, Indiana, USA

[Hide Contact information ▲](#)

[Hide Citation Contacts ▲](#)

Resource Details ►

DATASET LANGUAGES English (UNITED STATES)

STATUS completed
 SPATIAL REPRESENTATION TYPE vector

* PROCESSING ENVIRONMENT Microsoft Windows 7 Version 6.1 (Build 7601) Service Pack 1; Esri ArcGIS 10.2.2.3552

ARCGIS ITEM PROPERTIES

* NAME UNC_PSM_BENTON_CO
 * SIZE 0.254
 * LOCATION file:///\\iotisip01pa.state.in.us\dnrgis\$!\Potentiometric\Benton\1_Web_Products\ZIP FILES\UNC_PSM_BENTON_CO.shp
 * ACCESS PROTOCOL Local Area Network

[Hide Resource Details ▲](#)

Extents ►

EXTENT
 DESCRIPTION
 publication date

TEMPORAL EXTENT
 DATE AND TIME 2014-03-01

EXTENT
 GEOGRAPHIC EXTENT
 BOUNDING RECTANGLE
 WEST LONGITUDE -87.508846
 EAST LONGITUDE -87.093846
 SOUTH LATITUDE 40.474753
 NORTH LATITUDE 40.73711

EXTENT
 GEOGRAPHIC EXTENT
 BOUNDING RECTANGLE
 EXTENT TYPE Extent used for searching
 * WEST LONGITUDE -87.508847
 * EAST LONGITUDE -87.093846
 * NORTH LATITUDE 40.737230
 * SOUTH LATITUDE 40.474753
 * EXTENT CONTAINS THE RESOURCE Yes

EXTENT IN THE ITEM'S COORDINATE SYSTEM
 * WEST LONGITUDE 457034.896100
 * EAST LONGITUDE 492045.243300
 * SOUTH LATITUDE 4480575.667900
 * NORTH LATITUDE 4509592.062100
 * EXTENT CONTAINS THE RESOURCE Yes

[Hide Extents ▲](#)

Resource Points of Contact ►

POINT OF CONTACT
 INDIVIDUAL'S NAME Randal D. Maier
 ORGANIZATION'S NAME Indiana Department of Natural Resources, Division of Water

CONTACT'S POSITION Resource Assessment Section
 CONTACT'S ROLE point of contact

CONTACT INFORMATION ►

PHONE

VOICE 317-232-4160

FAX 317-233-4579

ADDRESS

TYPE both

DELIVERY POINT 402 W. Washington Street W264

CITY Indianapolis

ADMINISTRATIVE AREA Indiana

POSTAL CODE 46204

COUNTRY US

E-MAIL ADDRESS rmaier@dnr.IN.gov

HOURS OF SERVICE

8:15am - 4:15pm M-F except Government Holidays

[Hide Contact information ▲](#)

[Hide Resource Points of Contact ▲](#)

Resource Maintenance ►

RESOURCE MAINTENANCE

UPDATE FREQUENCY not planned

[Hide Resource Maintenance ▲](#)

Resource Constraints ►

LEGAL CONSTRAINTS

LIMITATIONS OF USE

The Indiana Department of Natural Resources, Division of Water has compiled this data set using data believed to be reasonably accurate. However, the Division makes no representation as to the accuracy, completeness, or usefulness of the data or data set. A degree of error is inherent in all maps. This map is intended for use only at the published scale. Reference to any specific commercial product, process, or service does not constitute an endorsement, recommendation, or favoring by the Division. Copyright 2015, Indiana Department of Natural Resources, Division of Water All Rights Reserved Any copying, adaptation, or distribution of these data without the express written consent of the Indiana Department of Natural Resources, Division of Water is discouraged.

OTHER CONSTRAINTS

This file is available to anyone, but access may be contingent on written request, specific terms relevant to the agency or person making the request, and/or current freedom of information statutes in the State of Indiana.

CONSTRAINTS

LIMITATIONS OF USE

Acknowledgement of the following agency in products derived from these data: Indiana Department of Natural Resources, Division of Water. This map was compiled by staff of the Indiana Department of Natural Resources, Division of Water using data believed to be reasonably accurate. However, a degree of error is inherent in all maps. This product is

distributed "as-is" without warranties of any kind, either expressed or implied. The maps are intended for use only at the published scale. The information on these media is proprietary to the State of Indiana, Indiana Department of Natural Resources, Division of Water. Any copying, adaptation, or distribution of these data without the express written consent of IDNR-DOW is discouraged. It is not recommended that these data be used for purposes other than general estimate of static water level elevations. Site specific conditions may vary considerably from mapped estimates.

[Hide Resource Constraints ▲](#)

Spatial Reference ►

ARCGIS COORDINATE SYSTEM

```
* TYPE      Projected
* GEOGRAPHIC COORDINATE REFERENCE  GCS_North_American_1983
* PROJECTION  NAD_1983_UTM_Zone_16N
* COORDINATE REFERENCE DETAILS
  PROJECTED COORDINATE SYSTEM
    WELL-KNOWN IDENTIFIER  26916
    X ORIGIN  -5120900
    Y ORIGIN  -9998100
    XY SCALE  450445547.3910538
    Z ORIGIN  -100000
    Z SCALE  10000
    M ORIGIN  -100000
    M SCALE  10000
    XY TOLERANCE  0.001
    Z TOLERANCE  0.001
    M TOLERANCE  0.001
    HIGH PRECISION  true
    LATEST WELL-KNOWN IDENTIFIER  26916
    WELL-KNOWN TEXT  PROJCS["NAD_1983_UTM_Zone_16N",GEOGCS
["GCS_North_American_1983",DATUM["D_North_American_1983",SPHEROID
["GRS_1980",6378137.0,298.257222101]],PRIMEM["Greenwich",0.0],UNIT
["Degree",0.0174532925199433]],PROJECTION["Transverse_Mercator"],PARAMETER
["False_Easting",500000.0],PARAMETER["False_Northing",0.0],PARAMETER
["Central_Meridian",-87.0],PARAMETER["Scale_Factor",0.9996],PARAMETER
["Latitude_Of_Origin",0.0],UNIT["Meter",1.0],AUTHORITY["EPSG",26916]]
```

REFERENCE SYSTEM IDENTIFIER

```
* VALUE  26916
* CODESPACE  EPSG
* VERSION  8.2.6
```

[Hide Spatial Reference ▲](#)

Spatial Data Properties ►

VECTOR ►

```
* LEVEL OF TOPOLOGY FOR THIS DATASET  geometry only
```

GEOMETRIC OBJECTS

```
FEATURE CLASS NAME  UNC_PSM_BENTON_CO
* OBJECT TYPE  composite
* OBJECT COUNT  49
```

[Hide Vector ▲](#)

ARCGIS FEATURE CLASS PROPERTIES ►

FEATURE CLASS NAME UNC_PSM_BENTON_CO

- * FEATURE TYPE Simple
- * GEOMETRY TYPE Polyline
- * HAS TOPOLOGY FALSE
- * FEATURE COUNT 49
- * SPATIAL INDEX TRUE
- * LINEAR REFERENCING FALSE

[Hide ArcGIS Feature Class Properties ▲](#)

[Hide Spatial Data Properties ▲](#)

Data Quality ►

SCOPE OF QUALITY INFORMATION ►

RESOURCE LEVEL dataset

[Hide Scope of quality information ▲](#)

DATA QUALITY REPORT - COMPLETENESS OMISSION ►

MEASURE DESCRIPTION

In conducting the mapping, the author(s) evaluated hundreds of water well records, especially those having relatively complete information on well location, static water level, well depth, ground elevation, and lithology. There were areas in the county with sparse information because of lack of well records or incomplete records.

[Hide Data quality report - Completeness omission ▲](#)

DATA QUALITY REPORT - QUANTITATIVE ATTRIBUTE ACCURACY ►

MEASURE DESCRIPTION

The mapping was conducted after a thorough documentation of well locations and water well record details.

[Hide Data quality report - Quantitative attribute accuracy ▲](#)

DATA QUALITY REPORT - ABSOLUTE EXTERNAL POSITIONAL ACCURACY ►

DIMENSION horizontal

MEASURE DESCRIPTION

The locations of many wells were field checked and the locations posted on 7.5 minute topographic maps. Visual confirmation of wells was not always possible. Many locations were based only on the street address, driving directions, or other location information provided on the well record.

[Hide Data quality report - Absolute external positional accuracy ▲](#)

[Hide Data Quality ▲](#)

Lineage ►

PROCESS STEP ►

WHEN THE PROCESS OCCURRED 2014-12-01 00:00:00

DESCRIPTION

Data were selected by careful evaluation of water well records to determine if the wells were field located and if they contained complete and reasonable information.

SOURCE DATA ►

RELATIONSHIP TO THE PROCESS STEP used

SOURCE CITATION ►

ALTERNATE TITLES IDNR-DOW records for domestic and other supply wells submitted by water well drillers from 1959-2013

[Hide Source citation ▲](#)

[Hide Source data ▲](#)

[Hide Process step ▲](#)

PROCESS STEP ►

WHEN THE PROCESS OCCURRED 2015-01-01 00:00:00

DESCRIPTION

After selection of water well records was complete, specific well data and other maps and reports were considered in the mapping process. For example, ground elevation, static water level, well depth, aquifer top and bottom elevation and lithology were obtained from well records. Other maps and reports included regional potentiometric surface elevations, hydrogeologic settings, groundwater availability, bedrock topography, and surface topography.

SOURCE DATA ►

RELATIONSHIP TO THE PROCESS STEP used

SOURCE CITATION ►

ALTERNATE TITLES IDNR-DOW water well records for domestic and other supply wells submitted by water well drillers from 1959-2013

[Hide Source citation ▲](#)

[Hide Source data ▲](#)

[Hide Process step ▲](#)

PROCESS STEP ►

WHEN THE PROCESS OCCURRED 2015-01-02 00:00:00

DESCRIPTION

A polyline coverage was created and attributed by Randal D. Maier using the heads-up digitizing method. Projection was UTM, Zone 16, NAD83.

PROCESS CONTACT

INDIVIDUAL'S NAME Randal D. Maier

ORGANIZATION'S NAME Indiana Department of Natural Resources, Division of Water

CONTACT'S POSITION Resource Assessment Section

CONTACT'S ROLE processor

CONTACT INFORMATION ►

PHONE

VOICE 317-232-4160

FAX 317-233-4579

ADDRESS

TYPE both

DELIVERY POINT 402 West Washington Street, W264

CITY Indianapolis

ADMINISTRATIVE AREA Indiana

POSTAL CODE 46204

COUNTRY US

E-MAIL ADDRESS rmaier@dnr.IN.gov

HOURS OF SERVICE

8:15 am - 4:15 pm M-F except Government Holidays

*Hide Contact information ▲**Hide Process step ▲*

SOURCE DATA ►

DESCRIPTION

Water well records from the IDNR-DOW well record database; USGS topography maps; various consultant geotechnical reports

RESOLUTION OF THE SOURCE DATA

SCALE DENOMINATOR 0

SOURCE CITATION ►

TITLE Potentiometric Surface Map of Benton County, Indiana

ALTERNATE TITLES Potentiometric Surface Map of Benton County, Indiana

PUBLICATION DATE 2015-01-01

EDITION 1

FGDC GEOSPATIAL PRESENTATION FORMAT map, vector digital data

SERIES

NAME Unconsolidated Potentiometric Surface Map

ISSUE PSM 50-A

RESPONSIBLE PARTY

ORGANIZATION'S NAME Indiana Department of Natural Resources, Division of Water
CONTACT'S ROLE publisher

CONTACT INFORMATION ►

ADDRESS

DELIVERY POINT Indianapolis, IN

[Hide Contact information ▲](#)

RESPONSIBLE PARTY

ORGANIZATION'S NAME Randal D. Maier, IDNR Division of Water, Resource Assessment Section
CONTACT'S ROLE originator

[Hide Source citation ▲](#)

EXTENT OF THE SOURCE DATA

DESCRIPTION

publication date

TEMPORAL EXTENT

DATE AND TIME 2015-03-01 00:00:00

[Hide Source data ▲](#)

[Hide Lineage ▲](#)

Distribution ►

DISTRIBUTOR ►

CONTACT INFORMATION

INDIVIDUAL'S NAME Randal D. Maier
ORGANIZATION'S NAME Indiana Department of Natural Resources, Division of Water
CONTACT'S POSITION Resource Assessment Section
CONTACT'S ROLE distributor

CONTACT INFORMATION ►

PHONE

VOICE 317-232-4160

FAX 317-233-4579

ADDRESS

TYPE both

DELIVERY POINT 402 W. Washington Street W264

CITY Indianapolis

ADMINISTRATIVE AREA Indiana

POSTAL CODE 46204

COUNTRY US

E-MAIL ADDRESS rmaier@dnr.IN.gov

HOURS OF SERVICE

8:15am - 4:15pm M-F except Government Holidays

[Hide Contact information ▲](#)

AVAILABLE FORMAT

NAME VPF

FILE DECOMPRESSION TECHNIQUE no compression applied

ORDERING PROCESS

DATE OF AVAILABILITY 2015-03-01 00:00:00

TRANSFER OPTIONS

ONLINE SOURCE

LOCATION <http://www.in.gov/dnr/water/7256.htm>

TRANSFER OPTIONS

ONLINE SOURCE

DESCRIPTION Data and Map

[Hide Distributor ▲](#)

DISTRIBUTION FORMAT

* NAME Shapefile

TRANSFER OPTIONS

* TRANSFER SIZE 0.254

ONLINE SOURCE

LOCATION none

[Hide Distribution ▲](#)

Fields ►

DETAILS FOR OBJECT [UNC_PSM_BENTON_CO ►](#)

* TYPE Feature Class

* ROW COUNT 49

FIELD FID ►

* ALIAS FID

* DATA TYPE OID

* WIDTH 4

* PRECISION 0

* SCALE 0

FIELD DESCRIPTION

Internal feature number.

DESCRIPTION SOURCE

Esri

DESCRIPTION OF VALUES

Sequential unique whole numbers that are automatically generated.

[Hide Field FID ▲](#)

FIELD Swl_E ►

* ALIAS Swl_E
 * DATA TYPE SmallInteger
 * WIDTH 4
 * PRECISION 4
 * SCALE 0

FIELD DESCRIPTION

Contour value showing line of equal elevation of the potentiometric surface (10 foot contour interval).

Hide Field Swl_E ▲

FIELD Shape ►

* ALIAS Shape
 * DATA TYPE Geometry
 * WIDTH 0
 * PRECISION 0
 * SCALE 0

FIELD DESCRIPTION

Feature geometry.

DESCRIPTION SOURCE

ESRI

DESCRIPTION OF VALUES

Coordinates defining the features.

Hide Field Shape ▲

Hide Details for object UNC_PSM_BENTON_CO ▲

Hide Fields ▲

Metadata Details ►

METADATA LANGUAGE English (UNITED STATES)
 METADATA CHARACTER SET utf8 - 8 bit UCS Transfer Format

SCOPE OF THE DATA DESCRIBED BY THE METADATA dataset
 SCOPE NAME * dataset

* LAST UPDATE 2015-03-19

ARCGIS METADATA PROPERTIES

METADATA FORMAT ArcGIS 1.0
 STANDARD OR PROFILE USED TO EDIT METADATA FGDC

CREATED IN ARCGIS FOR THE ITEM 2015-02-27 11:13:41
 LAST MODIFIED IN ARCGIS FOR THE ITEM 2015-03-19 06:04:30

AUTOMATIC UPDATES

HAVE BEEN PERFORMED Yes
 LAST UPDATE 2015-03-19 06:40:35

[Hide Metadata Details ▲](#)

Metadata Contacts ►

METADATA CONTACT

INDIVIDUAL'S NAME Randal D. Maier

ORGANIZATION'S NAME Indiana Department of Natural Resources, Division of Water

CONTACT'S ROLE point of contact

CONTACT INFORMATION ►

PHONE

VOICE 317-232-4160

FAX 317-233-4579

ADDRESS

TYPE both

DELIVERY POINT 402 W. Washington Street W264

CITY Indianapolis

ADMINISTRATIVE AREA Indiana

POSTAL CODE 46204

COUNTRY US

E-MAIL ADDRESS rmaier@dnr.IN.gov

HOURS OF SERVICE

8:15am - 4:15pm M-F except Government Holidays

[Hide Contact information ▲](#)

[Hide Metadata Contacts ▲](#)

FGDC Metadata (read-only) ▼