

# Hovey Lake FWA Waterfowl Hunting 2025/26

## Areas assigned by daily drawing

**Daily Drawings:** 4:30 a.m. Central Time at Hovey Lake Office

**Hunting Hours:** ½ hour before sunrise until 1 p.m. Central Time.

: Evening hunts: 10 a.m. – sunset Central Time.

### **Schedule:**

- **Hunted Daily:** All Lake Units, Weyerbacher North Marsh, Otter Marsh 1 and 2, Big Cypress Marsh, and Wabash Lowlands North.
- **Hunted Every 3<sup>rd</sup> Day (Starting Nov. 29):** Rail Marsh.
- **Hunted Every 3<sup>rd</sup> Day (Starting Nov. 30):** Units east of lake. Fields 1-3, Pecan Slough, Willow Slough, and Cottonwood Slough Unit 1 and 2.
- **Hunted Every 3<sup>rd</sup> Day (Starting Dec. 1):** Weyerbacher West and Lowlands South Marsh.
- **Starting Thursday, Dec. 4, rotated units will be hunted on Thursdays and Saturdays as evening hunts.**
- See waterfowl draw schedule for more details.

The lake is divided into four units by buoys and signs. Unit 1, Unit 2, and Unit 3 allow 4 parties. Unit 4 allows 2 parties. No boats or blinds provided on the lake.

Rail Marsh allows 3 parties, Pecan Slough 2 parties, and Willow Slough 1 party. Cottonwood Slough allows 2 parties in each unit. Fields 1-3 allow 3 parties each.

During the month of December, Sundays and Fridays are reserved days. Applications for reserved hunts will be taken at [www.GoOutdoorsIN.com](http://www.GoOutdoorsIN.com). A \$1 tech fee will be charged per application.

An ADA-accessible blind is located in Weyerbacher West Marsh. Preference for this blind will be given to hunters with disabilities and will be allocated during the daily draw.

**Waterfowl hunting is permitted on the rest of the property, not included in the daily draw, on a self-serve basis. These areas are hunted all legal hours (½ before sunrise to sunset).**

**\*Schedule is subject to change due to weather and water conditions.**








### **Rules:**

- **Lake closes to all activities (i.e. boating/paddling/fishing) besides checked in waterfowl hunters beginning Oct. 18.**
- Shotgun shell limit is 25 per hunter.
- All hunters must have a permit card, which must be turned in when finished hunting.
- There is a maximum of 3 hunters in a party. Parties of 2 and 3 have preference over parties of 1.
- Hunters must park in designated lots. Driving in fields is not permitted.
- **Hunting in the Waterfowl Resting Area is strictly prohibited from either the lake or fields.**
- 10 mph speed limit on the lake.
- All other state limits and regulations apply.



# Hovey Lake FWA Waterfowl Draw Map

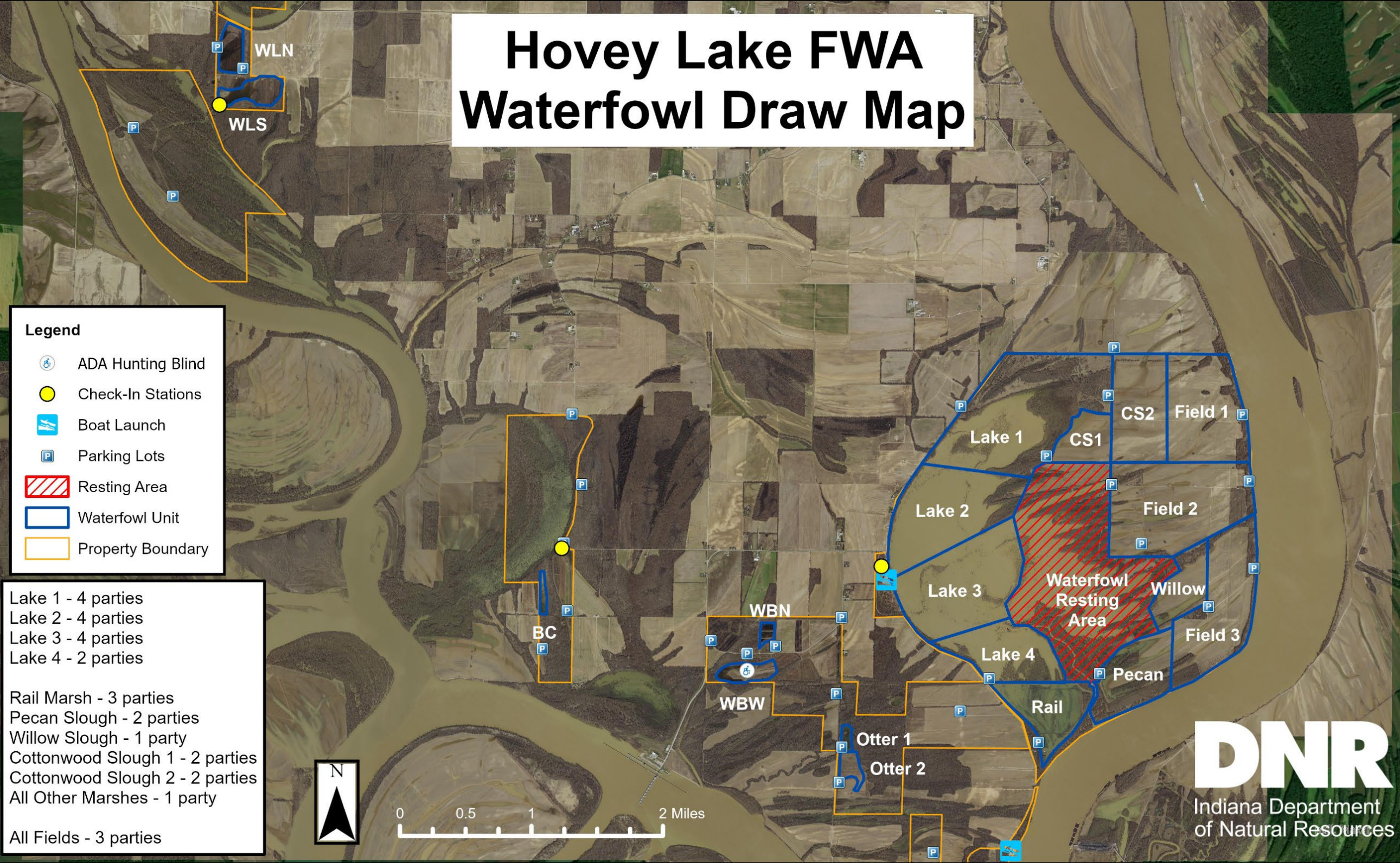
**Legend**

-  ADA Hunting Blind
-  Check-In Stations
-  Boat Launch
-  Parking Lots
-  Resting Area
-  Waterfowl Unit
-  Property Boundary

Lake 1 - 4 parties  
 Lake 2 - 4 parties  
 Lake 3 - 4 parties  
 Lake 4 - 2 parties

Rail Marsh - 3 parties  
 Pecan Slough - 2 parties  
 Willow Slough - 1 party  
 Cottonwood Slough 1 - 2 parties  
 Cottonwood Slough 2 - 2 parties  
 All Other Marshes - 1 party

All Fields - 3 parties



**DNR**  
 Indiana Department  
 of Natural Resources