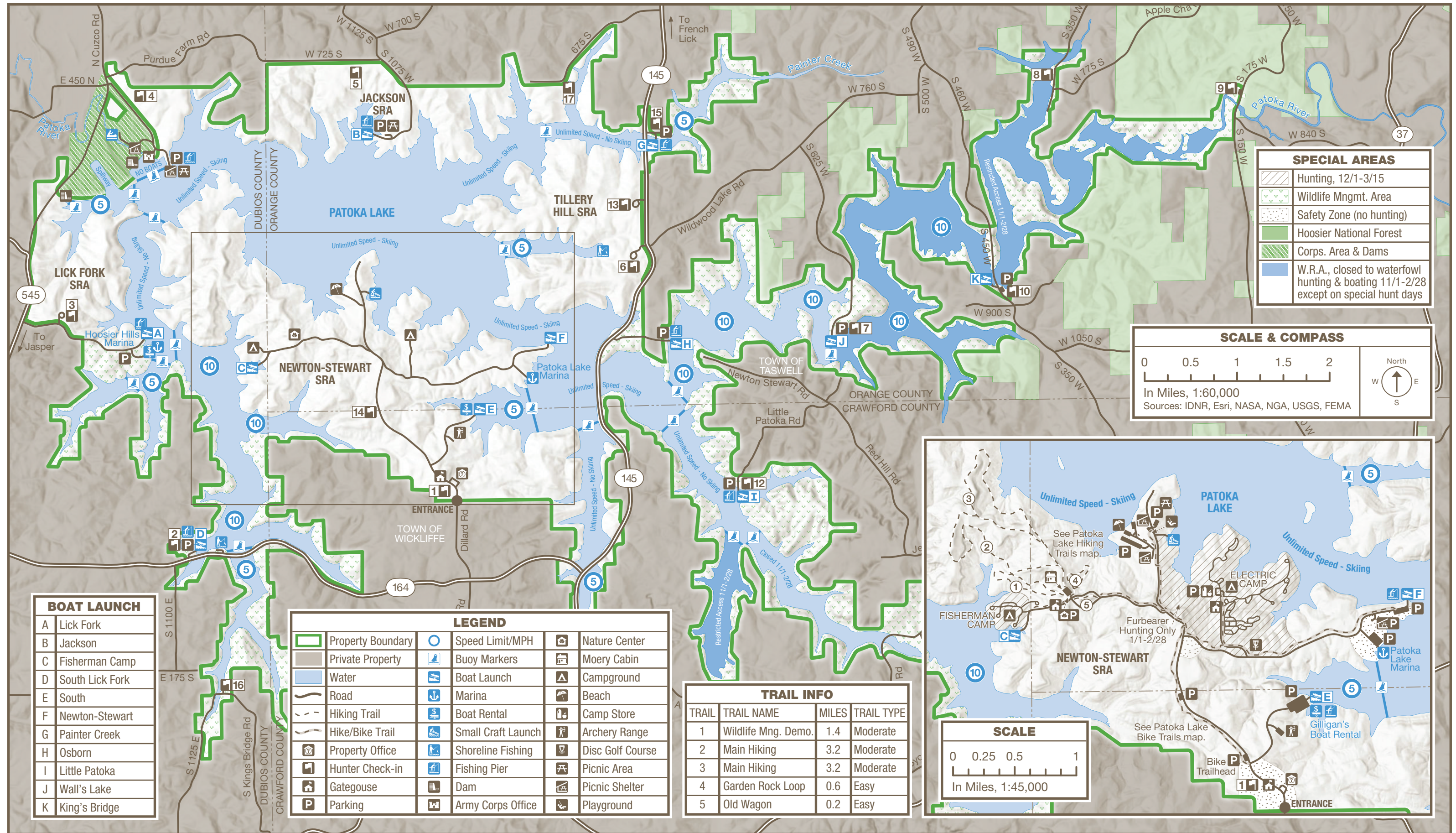


PATOKA LAKE

3084 N. Dillard Road | Birdseye, IN 47513 | 812-338-5589
26,000 Acres, 8,800-Acre Lake | Established 1980



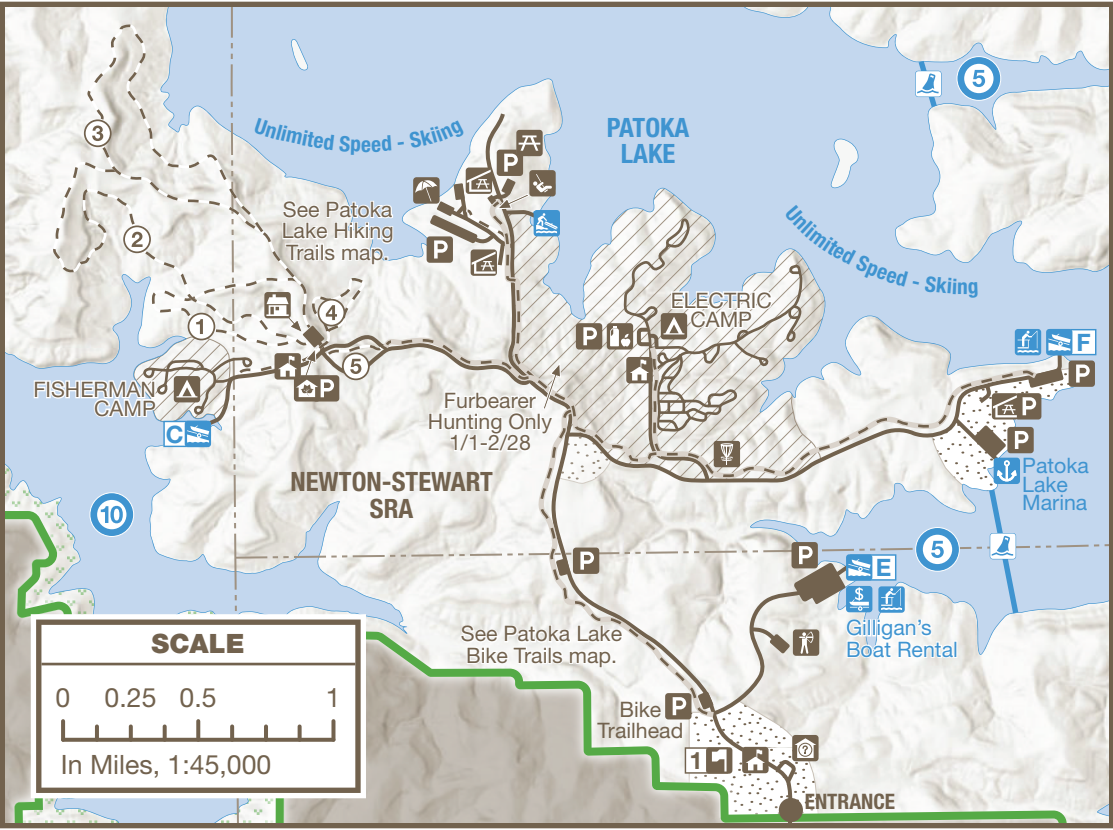
SPECIAL AREAS	
	Hunting, 12/1-3/15
	Wildlife Mngmt. Area
	Safety Zone (no hunting)
	Hoosier National Forest
	Corps. Area & Dams
	W.R.A., closed to waterfowl hunting & boating 11/1-2/28 except on special hunt days

SCALE & COMPASS	
0 0.5 1 1.5 2	North
In Miles, 1:60,000	W ↑ E
Sources: IDNR, Esri, NASA, NGA, USGS, FEMA	S

BOAT LAUNCH	
A	Lick Fork
B	Jackson
C	Fisherman Camp
D	South Lick Fork
E	South
F	Newton-Stewart
G	Painter Creek
H	Osborn
I	Little Patoka
J	Wall's Lake
K	King's Bridge

LEGEND					
	Property Boundary		Speed Limit/MPH		Nature Center
	Private Property		Buoy Markers		Moery Cabin
	Water		Boat Launch		Campground
	Road		Marina		Beach
	Hiking Trail		Boat Rental		Camp Store
	Hike/Bike Trail		Small Craft Launch		Archery Range
	Property Office		Shoreline Fishing		Disc Golf Course
	Hunter Check-in		Fishing Pier		Picnic Area
	Gatouguse		Dam		Picnic Shelter
	Parking		Army Corps Office		Playground

TRAIL INFO			
TRAIL	TRAIL NAME	MILES	TRAIL TYPE
1	Wildlife Mng. Demo.	1.4	Moderate
2	Main Hiking	3.2	Moderate
3	Main Hiking	3.2	Moderate
4	Garden Rock Loop	0.6	Easy
5	Old Wagon	0.2	Easy



SCALE	
0 0.25 0.5 1	North
In Miles, 1:45,000	W ↑ E



THE LAKE STORY

Patoka Lake's story began over 300 million years ago when a shallow, tropical sea covered the region. A huge river carrying sand deposited sand into the sea, forming a delta. The resulting sandstone bedrock later eroded to form today's steep, narrow valleys.

Rain runoff and multiple springs feed the Patoka River, which was used by Indigenous people and the plentiful wildlife. The land was abundant in chert, an ideal stone for tool making. Studies of Totem Rock and small, seasonal camps have concluded 4,000 years of human occupation.

European settlers began to arrive in this valley in the late 1700s. The dense forests along the river made it ideal for logging and sawmills. Oak, walnut, and other trees were cut into logs and bound together into rafts that floated down the river to mills in Jasper.

As farms grew, towns formed with general stores, churches, and schools. They formed the center of a dispersed farming community.

In the mid-1800s, the region experienced an influx of Germanic immigrants. Jacob Moery, a Swiss immigrant, brought his family to the region in 1865.

Flooding along the river was frequent and at times devastating, periodically affecting Jasper. By the 1940s, discussion began about how to protect the region. A 1965 decision to build the reservoir, which fulfilled with 1978's project completion.

Many residents along the river were relocated to make way for the reservoir.

Today, in addition to flood control, the reservoir provides recreational experiences and drinking water to 11 surrounding counties. The property also houses a collection of educational raptors, and its interpretive services offer exhibits, programs, and special events. Visit for a day on the lake or for a longer stay in the campgrounds.



RULES & REGULATIONS

- Please obey all property rules & regulations.

on.IN.gov/INStateParksRules



ACTIVITIES & FACILITIES

- Look for these icons on the map.

ARCHERY RANGE: Free. Open Sunrise-Sunset. Located in Newton-Stewart SRA.

BEACH: Swimming is available during open hours Memorial Day through Labor Day. A modern bathhouse provides showers, dressing facilities, restrooms, and concessions.

BOAT LAUNCH: Located around the lake with two major launches in Newton-Stewart SRA. Small craft launch located just east of beach.

CAMPING: Electric sites with asphalt pads, water, flush toilets, hot water, showers, a camp store, fish-cleaning station and trailer dump station. The fisherman campground is primarily for anglers and primitive campers. Pit toilets and water available. Youth Tent Area also available. Occupancy limited to 14 consecutive nights. Reserve at camp.IN.gov.

DISC GOLF COURSE: 18-hole course with concrete tees. 1.9 miles of hills and woods.

FISHING: Bass, bluegill, catfish, redear, crappie and walleye. State fishing license is required and available to purchase at the office.

HUNTING: Woodland game and waterfowl are available during open seasons. Deer and squirrel are abundant. All hunters are required to register at a hunter check-in station.

Bonus County Antlerless Permits: Contact property office for current quotas.

Safety Zones: Campground safety zones are open to furbearer hunting Jan. 1 until Feb. 28.

INTERPRETIVE NATURALIST SERVICE: Seasonal interpretive and recreational programs. For program info, call 812-685-2447 or visit interpretiveservices.IN.gov.

MARINA: Two marinas operated by concessionaires for the State to provide fuel, rentals and a full range of amenities.

PICNIC AREAS: tables, grills, toilet facilities and shelter. Accessible sites available.

SHELTERS: Reserve at camp.IN.gov.

NATURE CENTER: Located in the Newton-Stewart SRA. Open year-round for programs and special events. Includes nature and heritage displays, seating for presentations, a bird observation room, a backyard wildlife habitat garden and a raptor viewing area.



HIKING TRAILS

- For safety, please stay on marked trails.
- See Patoka Lake Hiking Trails map for more info.

TRAIL & DESCRIPTION	DISTANCE	DIFFICULTY
1. Wildlife Mng. Demonstration	1.4 mi.	Moderate

A loop trail beginning at the Nature Center. Illustrates habitat requirements of wildlife as well as wildlife management techniques used on the property. Demonstrations include food plots, protective cover planting, controlled burning and much more. A booklet keyed to numbered posts is available for this self-guided interpretive trail.

2. Main Hiking	3.2 mi.	Moderate
-----------------------	---------	----------

Begins at the Nature Center and is well-maintained, but has a limited number of signs along the way. Average hiking time is three to four hours. Enjoy walking to Totem Rock, a large rock shelter that was used by Native Americans and early settlers. "Short cuts" back to the Center are available for those familiar with maps and hiking. A "Birdwatching Spur" is on the far north end of the peninsula.

3. Main Hiking	3.2 mi.	Moderate
-----------------------	---------	----------

Begins north of the Nature Center parking lot, next to the Moery Cabin Site. The trail initially follows an old roadway lying on a ridgetop in a general western/northwestern direction before falling in elevation and sweeping back south/southeast following the edge of the 1,200-acre peninsula back to the parking area.

4. Garden Rock Loop	0.6 mi.	Easy
----------------------------	---------	------

A short, hilly loop trail begins just across from the Nature Center. See rock overhangs, ferns and pine trees. Can be hiked in 30 to 45 minutes.

5. Old Wagon	0.2 mi.	Easy
---------------------	---------	------

Commonly referred to as "The Narrows," this trail is a brief historic wagon road. The wagon trail, abandoned in the 1800s, shows signatures in the sandstone rocks that give forth its name. Some signatures date as far back as 1864.

Interpreter-Conducted Walks—Join us for scheduled walks and hikes that may last 30 minutes or three hours. These walks are an enjoyable way to see the Reservoir, learn about nature and history, and meet other people.

Memories made naturally.
INDIANA STATE PARKS

DISCOVER • CHALLENGE • EXPLORE

HOOSIER QUEST-Pin & Patch Program

Each state park offers you the opportunity to complete tasks to earn a patch or property pin.

on.IN.gov/hoosierquest

BOOK YOUR STAY • RESERVE TODAY

GET OUT and GO CAMPING

Call or go online to make your reservation for all types of

- Camping
- Family Cabins
- Shelters

Includes state parks, reservoirs and forests.

1-866-6campIN
(1-866-622-6746)

camp.IN.gov

STAY IN at a STATE PARK INN

Call or go online to make your reservation for a(n)

- State Park Inn
- Inns-managed Cabin

Seven State Parks include Inns: Brown County, Clifty Falls, Fort Harrison, McCormick's Creek, Spring Mill, Turkey Run and Pokagon.

1-877-lodges1
(1-877-563-4371)

IndianalInns.com



For a full list of events, visit interpretiveservices.IN.gov



Please carry out all trash you produce to help keep the property clean and beautiful for all to enjoy!

FOLLOW US



OUTDOOR INDIANA Subscribe to Outdoor Indiana magazine today, Visit OutdoorIndiana.org or call 317-233-3046.

The programs, services, facilities, and activities of the Indiana Department of Natural Resources are available to everyone. DNR prohibits discrimination on the basis of race, color, national origin, age, sex, or disability. If you believe that you have been discriminated against in any program, activity, or facility as described above, or if you desire further information please write to: Department of Natural Resources, Executive Office, 402 W. Washington Street, W256, Indianapolis, IN 46204, (317) 232-4020.



DNR PROPERTIES NEARBY

- Find more DNR properties at on.IN.gov/recfinder.

FERDINAND STATE FOREST

boating, boating ramps, boat rental, camping, fishing, hiking, hunting, group camp, mountain biking, play/sports area, picnic area, shelter house, swimming beach, trapping

BLUFFS OF BEAVER BEND

parking, hiking, wildlife watching, limited hunting



TRUE TALES

- **HABITAT FEATURE:** At 8,800 acres, Patoka Lake provides habitat for freshwater jellyfish, river otters, bald eagles, and osprey.
- **INTERESTING FEATURE:** The lake and surrounding property are owned by the U.S. Army Corps of Engineers. The DNR leases the land for wildlife management and recreation.
- **HISTORICAL FEATURE:** The Narrows road was also called "Pull Tight" because ox drivers had to pull their reins equally tight to keep their wagons from weaving and hitting the rock outcroppings.



IMPORTANT INFORMATION

DAM

Type:	earth fill
Maximum height:	145 feet
Length:	1,500 feet
Drainage area above dam:	168 sq. miles

OPERATING LEVELS

	Elevation (Feet mean sea level)	Area (Acres)	Length (Miles)
Winter Pool	532	0	0
Summer Pool	536	0	0
Flood Pool	548	0	0

DNR
Indiana Department
of Natural Resources

PATOKA LAKE



Patoka Lake
3084 North Dillard Rd
Birdseye, IN 47513

(812) 338-5589

on.IN.gov/patokalake

patokalake@dnr.IN.gov

on.IN.gov/stateparks