

HARMONIE STATE PARK

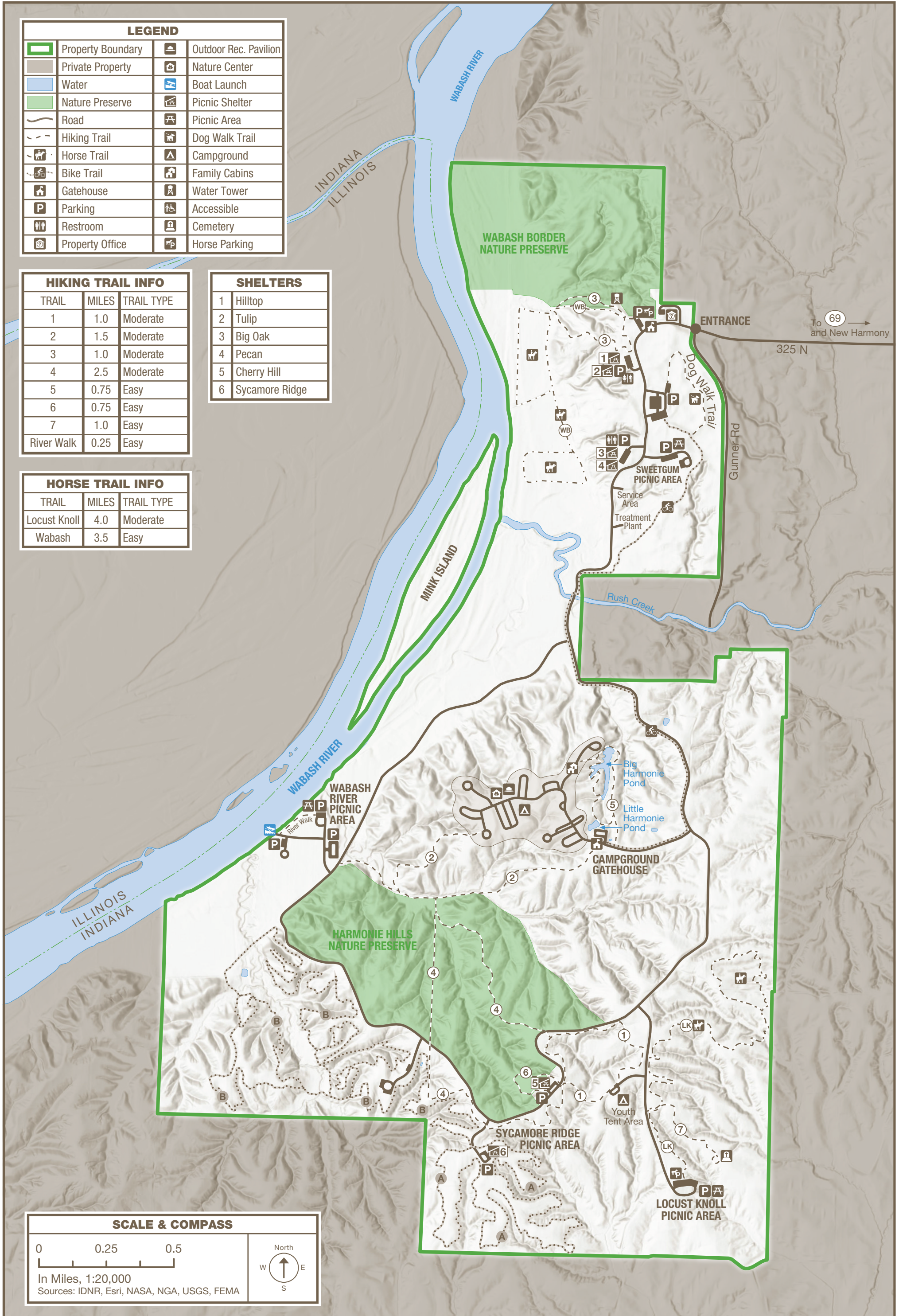
3451 Harmonie State Park Road | New Harmony, IN 47631 | 812-682-4821
3,465 Acres | Established 1966

LEGEND			
	Property Boundary		Outdoor Rec. Pavilion
	Private Property		Nature Center
	Water		Boat Launch
	Nature Preserve		Picnic Shelter
	Road		Picnic Area
	Hiking Trail		Dog Walk Trail
	Horse Trail		Campground
	Bike Trail		Family Cabins
	Gatehouse		Water Tower
	Parking		Accessible
	Restroom		Cemetery
	Property Office		Horse Parking

HIKING TRAIL INFO		
TRAIL	MILES	TRAIL TYPE
1	1.0	Moderate
2	1.5	Moderate
3	1.0	Moderate
4	2.5	Moderate
5	0.75	Easy
6	0.75	Easy
7	1.0	Easy
River Walk	0.25	Easy

SHELTERS	
1	Hilltop
2	Tulip
3	Big Oak
4	Pecan
5	Cherry Hill
6	Sycamore Ridge

HORSE TRAIL INFO		
TRAIL	MILES	TRAIL TYPE
Locust Knoll	4.0	Moderate
Wabash	3.5	Easy



SCALE & COMPASS		
0	0.25	0.5
In Miles, 1:20,000		
Sources: IDNR, Esri, NASA, NGA, USGS, FEMA		



THE PARK STORY

Harmonie State Park's lowland river location has influenced its plants and wildlife, as well as those who came looking for a better life.

An ancient swamp once covered the region. When its plants died, their remains were covered in oxygen-free sediments that prevented decomposition and eventually formed oil. This area of Indiana rests on an oil field called the Illinois Basin that extends into Illinois and Kentucky.

The Wabash River ends its 475-mile journey at the Ohio River, downstream from the park, becoming a larger, slower river with oxbows in its floodplain.

Many plants found at Harmonie State Park are at the northernmost extent of their range. They follow the Wabash River valley's more temperate climate. Pecan trees, Southern cane, mistletoe, and bald cypress can be found.

The Myaamia (Miami), Bodwéwadmí (Potawatomi), Wea, and Piankashaw once occupied the Harmonie State Park area. At one time a major village was located south of Vincennes near the town of New Harmony.

Two Utopian communities settled near the park in the early 1800s. The first, in 1814, were Europeans fleeing religious persecution and in 1824, a society based on education and hard work attracted geologists and naturalists for scientific study. This brought Thomas Say, the father of American entomology, to the area, who discovered the Say's Firefly, which became Indiana's State Insect in 2018.

Early resident Elmer Elsworth Elliott spent much of his life planting trees. After his death, his daughters donated 700 acres to form the park's nucleus. Established in 1966, the park now includes towering trees, wetlands and cool ravines.

Today, Harmonie State Park is ideal for a variety of outdoor activities. Come for camping, picnicking, hiking, or our interpretive programs.



RULES & REGULATIONS

- Please obey all property rules & regulations.

on.IN.gov/INStateParksRules



ACTIVITIES & FACILITIES

- Look for these icons on the map.

BIKE TRAILS: Approximately 3 miles of trail connect the campground and old swimming pool parking lot. One mile runs through woodland. The remaining 2 miles run adjacent to roadway.

MOUNTAIN BIKE TRAILS: Trailheads for 14 miles of mountain bike trails are located at Sycamore Ridge. Do not ride in soft or muddy conditions. Children under 12 should ride with an adult. Helmets are required.

CAMPING: 200 electric sites; 20 sites have 50-amp service; the remaining have 30-amp. Five modern comfort stations available; one is heated during winter months. Occupancy is limited to two weeks. Most sites will accommodate trailer or tents. ADA sites available. No individual water or sewer hookups at sites. Dump station located near entrance. Water available throughout campground. Youth tent camping available only where designated. Make reservations at camp.IN.gov.

FAMILY CABIN: 11 modern cabins, air conditioning and electric heat. Wood stove available, October to April. Outdoor charcoal grill. Occupancy limited to two weeks. No pets. Cabins are open all year. Minimum rental age is 21. Reserve with a credit card. Two ADA cabins available. Make reservations at camp.IN.gov.

FISHING: Available at Little Harmonie Pond. State license required.

HIKING: Eight miles of easy to moderate hiking trails. Vehicles are prohibited on hiking trails.

HORSE TRAIL: 7.5 miles of horse trails for day use ONLY.

INTERPRETIVE NATURALIST SERVICE: Available year-round, with limited hours in the off season. Hikes, programs, talks, crafts, evening activities, school, scout and other groups should be scheduled at least one month in advance. Program schedules are available at InterpretiveServices.IN.gov, gatehouse and park office.

PICNIC AREAS: Picnic tables, grills, and playground equipment. Modern and seasonal restrooms. Make reservations at camp.IN.gov.



HIKING TRAILS

- For safety, please stay on marked trails.
- Bicycles prohibited on hiking trails.

TRAIL & DESCRIPTION	DISTANCE	DIFFICULTY
Trail 1	1.0 mi.	Moderate

A relatively short trail leading from the youth tent campground into a ravine and gradually ascending into wooded areas and grassy plateaus. This trail returns to the youth tent area.

Trail 2	1.5 mi.	Moderate
----------------	---------	----------

Leads from the campground between wooded hills, descending to a small stream. Meanders on a country road next to a fast-flowing brook, with some steep hills in certain places. Returns to the campground entrance.

Trail 3	1.0 mi.	Moderate
----------------	---------	----------

Begins at the Poplar Grove picnic area and continues past the water tower. Overlooks a small stream. Ascends a steep hill and returns to the picnic area.

Trail 4	2.5 mi.	Moderate
----------------	---------	----------

A fairly long trail with steep hills, winds through natural forests descending into ravines across two streams. The trail joins three picnic areas, any of which may be used as a starting point. Follows a short section of Trail 1.

Trail 5	0.75 mi.	Moderate
----------------	----------	----------

Begins near the campground gatehouse, crosses the dam on a small wildlife pond and ends at the cabins. This is a good trail for observing pond life and white-tailed deer. Additional loop returns back to where you started.

Trail 6	0.75 mi.	Easy
----------------	----------	------

Begins and ends at Cherry Hill picnic area.

Trail 7	1.0 mi.	Easy
----------------	---------	------

A short walk to a pioneer cemetery where two wives of Henry Edmonds are buried.

River Walk	0.25 mi.	Easy
-------------------	----------	------

This walk follows the Wabash River from picnic area to boat ramp.



MOUNTAIN BIKING TRAILS

- For safety, please stay on marked trails.
- Also available for hiking.

TRAIL & DESCRIPTION	DISTANCE	DIFFICULTY
Trail 1	4 mi.	Beginner

A loop trail designed for riders of all skill levels. It can be ridden in either direction.

Trail 2	6 mi.	More Difficult
----------------	-------	----------------

A trail designed for an intermediate skill level. Under construction as more miles are added.



DNR PROPERTIES NEARBY

- Find more DNR properties at on.IN.gov/recfinder.

BLUE GRASS FISH & WILDLIFE AREA

wildlife watching, fishing, hunting, trapping, dog training area, boating, boat launch

HOVEY LAKE FISH & WILDLIFE AREA

fishing, boating, boat launch, hunting, trapping, dog training area, picnicking, wildlife watching



TRUE TALES

- **COMMUNITY DEVELOPMENT:** One of the Utopian communities founded here developed the state's first public schools to offer equal education for boys and girls, the states' first public library, and the first kindergarten in the United States.
- **INTERESTING VEGETATION:** In the mid-1800s, trees reaching 150-180 feet in height were common.
- **INDUSTRIAL FEATURE:** Since 1945, more than 50 oil wells have been drilled at what is now the park, and some are still active. A relationship is maintained with the companies of those wells.



FRIENDS GROUP

Friends of Harmonie State Park

Join Friends of Harmonie State Park to protect the natural and cultural heritage, and educate the public. For information, visit:

on.IN.gov/INStateParksFriends

Memories made naturally.
INDIANA STATE PARKS

DISCOVER • CHALLENGE • EXPLORE

HOOSIER QUEST-Pin & Patch Program

Each state park offers you the opportunity to complete tasks to earn a patch or property pin.

on.IN.gov/hoosierquest

BOOK YOUR STAY • RESERVE TODAY

GET OUT and GO CAMPING

Call or go online to make your reservation for all types of

- Camping
- Family Cabins
- Shelters

Includes state parks, reservoirs and forests.

1-866-6campIN
(1-866-622-6746)

camp.IN.gov

STAY IN at a STATE PARK INN

Call or go online to make your reservation for a(n)

- State Park Inn
- Inns-managed Cabin

Seven State Parks include Inns: Brown County, Clifty Falls, Fort Harrison, McCormick's Creek, Spring Mill, Turkey Run and Pokagon.

1-877-lodges1
(1-877-563-4371)

IndianalInns.com



For a full list of events, visit interpretiveservices.IN.gov



Please carry out all trash you produce to help keep the property clean and beautiful for all to enjoy!

FOLLOW US



OUTDOOR INDIANA Subscribe to Outdoor Indiana magazine today, Visit OutdoorIndiana.org or call 317-233-3046.

The programs, services, facilities, and activities of the Indiana Department of Natural Resources are available to everyone. DNR prohibits discrimination on the basis of race, color, national origin, age, sex, or disability. If you believe that you have been discriminated against in any program, activity, or facility as described above, or if you desire further information please write to: Department of Natural Resources, Executive Office, 402 W. Washington Street, W256, Indianapolis, IN 46204, (317) 232-4020.

DNR
Indiana Department
of Natural Resources

HARMONIE STATE PARK



Harmonie State Park
3451 Harmonie State Park Rd
New Harmony, IN 47631

812-682-4821

on.IN.gov/harmoniesp

harmoniesp@dnr.IN.gov

on.IN.gov/stateparks