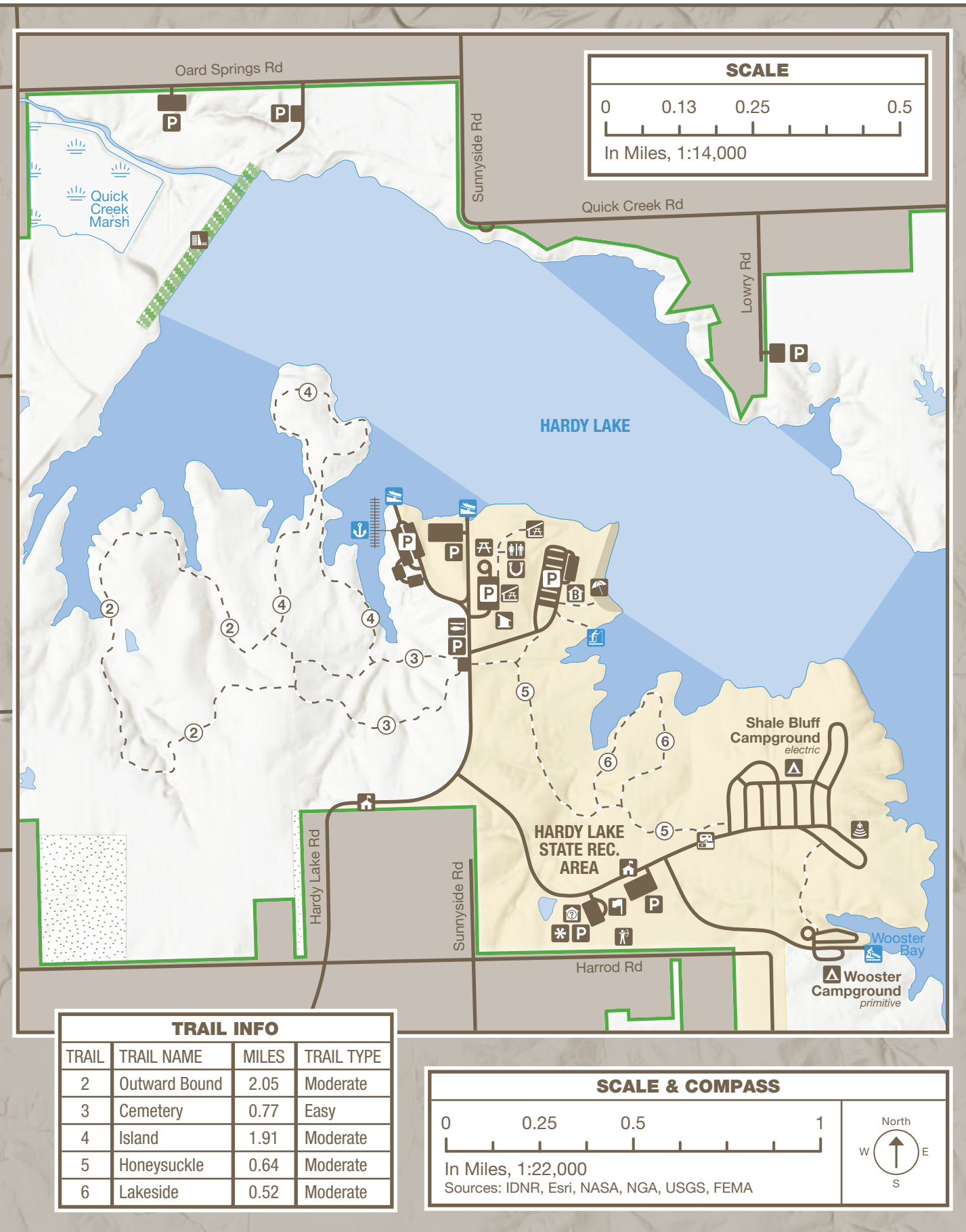
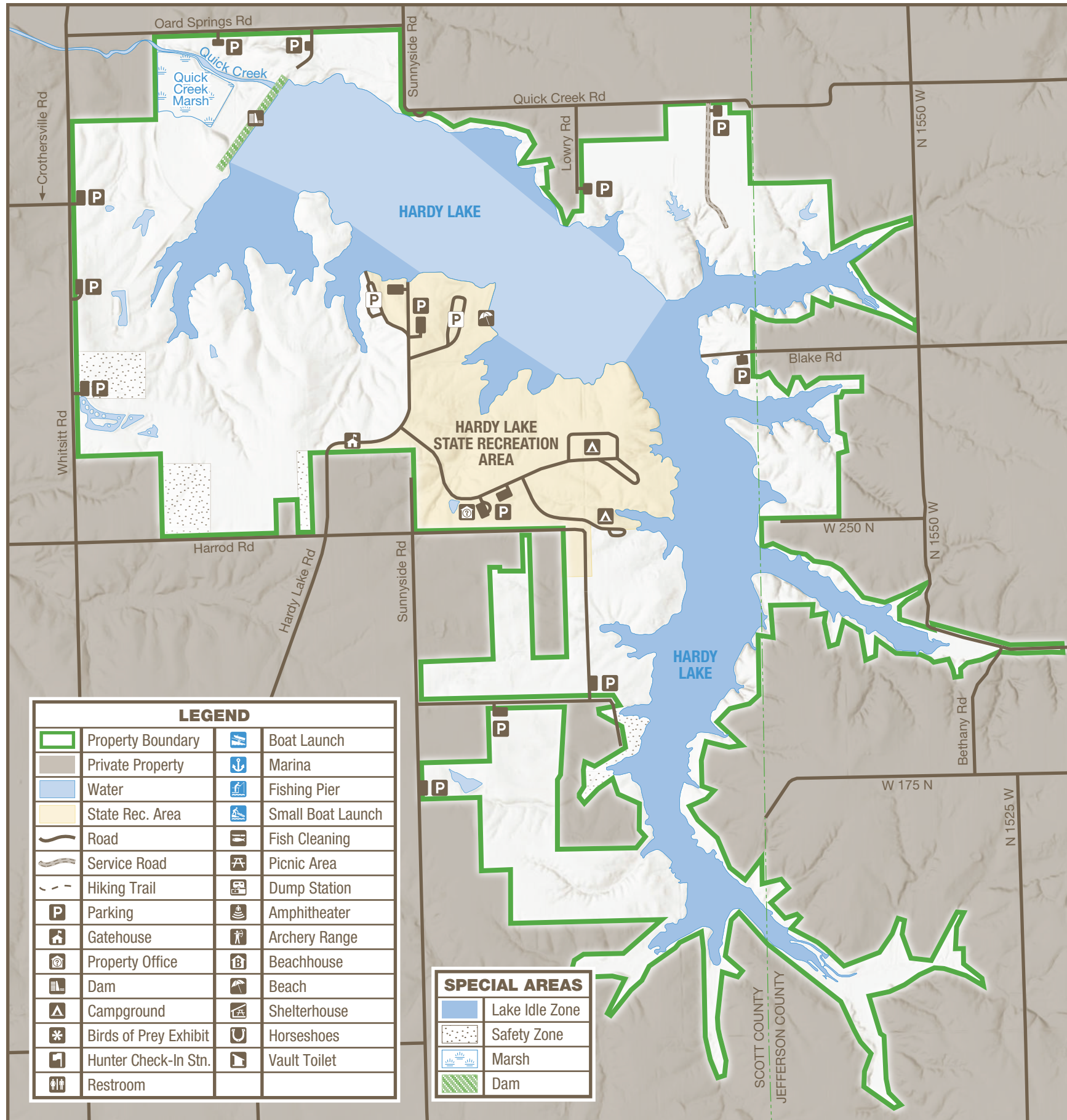


HARDY LAKE

WITH HARDY LAKE STATE RECREATION AREA

4171 E Harrod Road | Scottsburg, IN 47170 | 812-794-3800 | 2,449 Acres, 741 acre lake | Established 1973





THE LAKE STORY

Hardy Lake's rugged landscape created early challenges and continuing opportunities.

The rocky bluffs surrounding Hardy Lake formed when the region was covered by a shallow ocean. Marine animal remains were compacted to form solid limestone. The bedrock below Hardy Lake is shale and slate, forming when the land was covered by a lake or river delta.

Hardy Lake's early terrain was a blanket of oak/hickory forest. The Myaamia (Miami) homeland included this region, and for thousands of years the land provided for that tribe's needs. The Shawnee tribe also settled here.

The McClain family cemetery lies within the property boundaries. In 1820, Matthew McClain moved with his parents to Scott County. His father was a carpenter and farmer. Matthew married Emily Swincher in 1829, starting their own farm. Matthew became a preacher and founded the area's first school. He was one of many who fell to the milk sickness, barely surviving after months of illness.

In the mid-1960s, the search for a reliable water source began in the surrounding region. By 1970, dam construction on Quick's Creek created the 741-acre Quick's Creek Reservoir (later renamed Hardy Lake). The impervious shale and slate bedrock made it an ideal location. Recreational facilities were added, and management was assumed by the DNR.

The water supply and recreation mission of Hardy Lake doesn't include flood control, so the water level remains stable all year. Land management includes creating and maintaining wildlife habitat. The property plants more than 100 acres of wildlife food and manages several marshes and ponds.

Today, Hardy Lake has something for nearly everyone. The property offers hiking, swimming, fishing, hunting, camping, and interpretive programs.



RULES & REGULATIONS

- Please obey all property rules & regulations.

on.IN.gov/INStateParksRules



ACTIVITIES & FACILITIES

- Look for these icons on the map.

BEACH: Swimming is available at the unguarded beach during posted hours from Memorial Day through Labor Day. A modern beach house provides showers, dressing benches, and restrooms.

BOAT LAUNCH: Four launch ramps are available. Two major ramps are within the recreation area near Alpha marina.

CAMPING: Shale Bluff campground offers electric sites with asphalt-surfaced roads and gravel pads, electric hookups, water fountains, flush toilets, hot water and showers. A trailer dump station serves the campground. Occupancy is limited to 14 consecutive nights. Wooster campground primarily serves primitive campers. Water and one pit toilet are available in the immediate area. A launch ramp is located adjacent to the campground. Make reservations at camp.IN.gov.

FISHING: Bluegill, catfish, crappie, largemouth bass and tiger muskie are common. State fishing license required.

FISHING PIER: Located in Hardy Lake SRA just south of the swimming beach.

HUNTING: Hunting of all wildlife species is permitted within Indiana hunting regulations. Waterfowl, squirrels, turkeys and deer are the most abundant, however, quail, snipe, woodcock, rabbit, fox, and raccoons also are found on the property. All hunters are required to check in at the Hunter check-in station located at the park office before hunting.

INTERPRETIVE & RECREATIONAL PROGRAMS: Explore the world of natural resources while enjoying interpretive and recreational programs. Program schedules are at InterpretiveServices.IN.gov or (812) 794-3800.

MARINA: Located at the Alpha launch ramp. Seasonal mooring is available for boats in open dock slips. Modern restrooms available.

PICNIC AREAS: Most areas contain accessible picnic sites, picnic tables, grills, toilet facilities and shelters. Some areas have horseshoe pits.



HIKING TRAILS

- For safety, please stay on marked trails.
- Bicycles prohibited on hiking trails.

TRAIL & DESCRIPTION	DISTANCE	DIFFICULTY
2. Outward Bound	2.05 mi.	Moderate

This trail takes you into a typical stand of Indiana hardwood trees. You will see both an oak-hickory and a beech-maple climax forest. This trail will also allow you to view some of the beautiful backwaters of Hardy Lake.

3. Cemetery Trail	0.77 mi.	Easy
--------------------------	----------	------

This trail takes you through an oak-hickory climax forest. The McClain Cemetery is a major point of interest on this trail. This family cemetery has headstones dating to the 1700s.

4. Island Trail	1.91 mi.	Easy
------------------------	----------	------

This trail branches off of either the Cemetery Loop or the Outward Bound Loop. Points of interest include beaver cuttings along the shoreline, wildlife food plots, and several areas along the island that overlook the lake.

5. Honeysuckle Trail	0.64 mi.	Moderate
-----------------------------	----------	----------

This trail connects Shale Bluff campground with the beach. Passing through different stages of succession, you will be able to see a managed pine grove, cedar thickets and tulip poplar trees, as well as a mature forest.

6. Lakeside Trail	0.52 mi.	Easy
--------------------------	----------	------

Loop trail with a beautiful view of Hardy Lake. Several bird nesting structures are located along this trail. It's also a great trail to hike at night to see fireflies and foxfire, and hear an owl hooting.



FRIENDS GROUP

Friends of Hardy Lake

Join Friends of Hardy Lake to help support the Dwight Chamberlain Raptor Center, Hardy Lake and its Interpretive programs. For information, visit:

on.IN.gov/INStateParksFriends

Memories made naturally. INDIANA STATE PARKS

DISCOVER • CHALLENGE • EXPLORE

HOOSIER QUEST-Pin & Patch Program

Each state park offers you the opportunity to complete tasks to earn a patch or property pin.

on.IN.gov/hoosierquest

BOOK YOUR STAY • RESERVE TODAY

GET OUT and GO CAMPING

Call or go online to make your reservation for all types of

- Camping
- Family Cabins
- Shelters

Includes state parks, reservoirs and forests.

1-866-6campIN
(1-866-622-6746)

camp.IN.gov

STAY IN at a STATE PARK INN

Call or go online to make your reservation for a(n)

- State Park Inn
- Inns-managed Cabin

Seven State Parks include Inns: Brown County, Clifty Falls, Fort Harrison, McCormick's Creek, Spring Mill, Turkey Run and Pokagon.

1-877-lodges1
(1-877-563-4371)

IndianalInns.com



For a full list of events, visit interpretiveservices.IN.gov



Please carry out all trash you produce to help keep the property clean and beautiful for all to enjoy!



FOLLOW US



OUTDOOR INDIANA Subscribe to Outdoor Indiana magazine today, Visit OutdoorIndiana.org or call 317-233-3046.

The programs, services, facilities, and activities of the Indiana Department of Natural Resources are available to everyone. DNR prohibits discrimination on the basis of race, color, national origin, age, sex, or disability. If you believe that you have been discriminated against in any program, activity, or facility as described above, or if you desire further information please write to: Department of Natural Resources, Executive Office, 402 W. Washington Street, W256, Indianapolis, IN 46204, (317) 232-4020.



DNR PROPERTIES NEARBY

- Find more DNR properties at on.IN.gov/recfinder.

CROSLY FISH & WILDLIFE AREA

wildlife viewing, fishing, ice fishing, hunting, trapping, shooting and archery range, dog training area, boating

STARVE HOLLOW STATE RECREATION AREA

hike, bike, picnic area, playground, interpretive center, fishing, swimming, boating, boat/kayak rentals, camping, rent-a-camp cabins, campstore



IMPORTANT INFORMATION

DAM

Type:	earth fill
Maximum height:	52 feet
Length:	376 feet
Base width:	340 feet max.
Drainage area above dam:	12 sq. miles

OPERATING LEVELS

	Elevation (Feet mean sea level)	Area (Acres)
Normal Pool	600	741
Flood Pool	605	876



TRUE TALES

- **CREATURE FEATURE:** Hardy Lake is unique in the DNR for its Raptor Center. The center's goals are to care for birds of prey and to educate visitors.
- **HISTORICAL FEATURE:** The Family Fishing Hole was once part of the Lowry Farm. Lowell Lowry built the pond and stocked it with fish, making it a gathering spot for family and friends.
- **LANDSCAPE FEATURE:** Quick's Creek, which was dammed to create Hardy Lake, is a tributary of the Muscatatuck River.



HARDY LAKE



Hardy Lake
GPS: 5620 N. Hardy Lake Rd.
Mail: 4171 E. Harrod Rd.
Scottsburg, IN 47170-8438

(812) 794-3800

on.IN.gov/hardylake

hardylake@dnr.IN.gov

on.IN.gov/stateparks