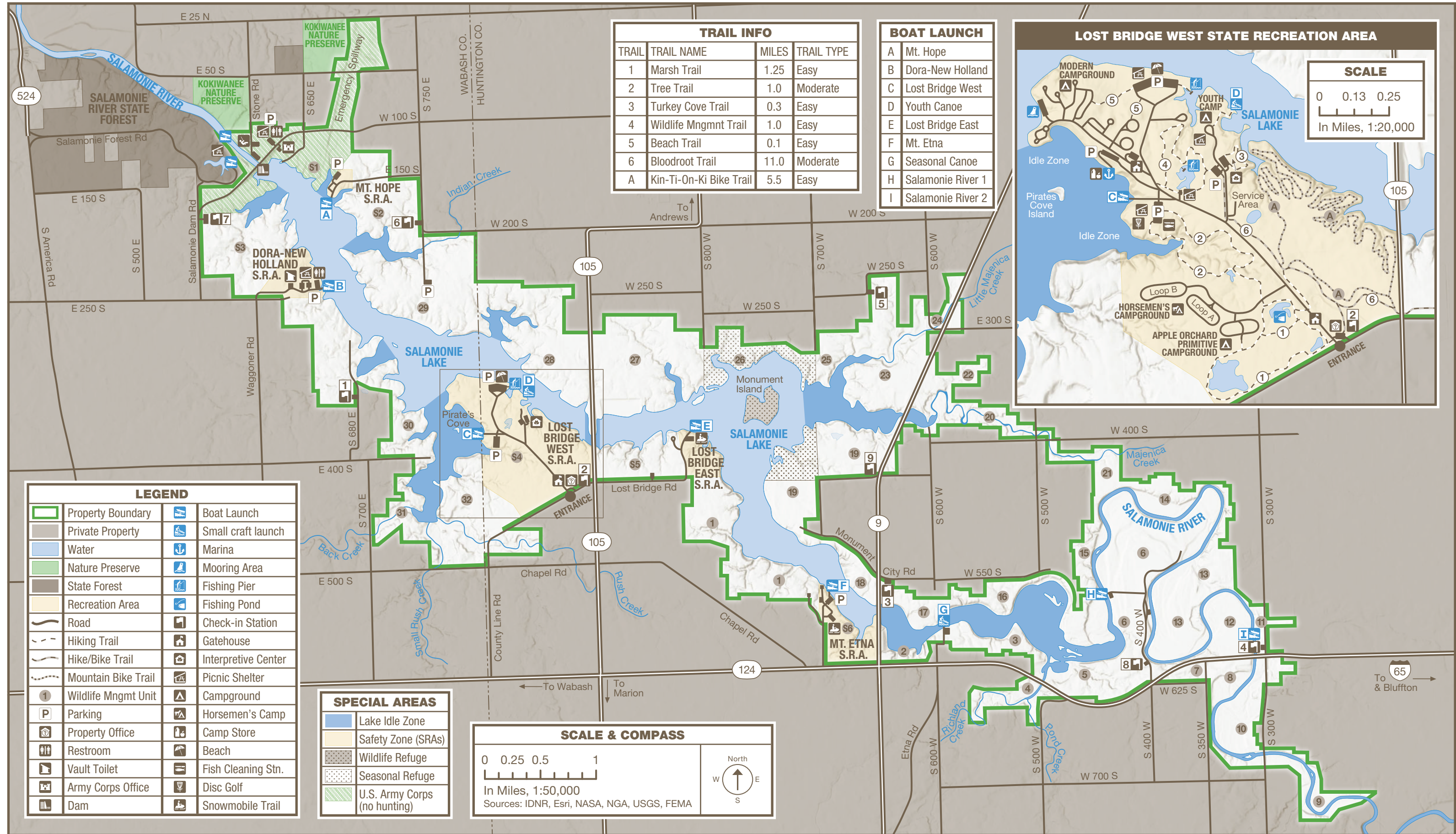


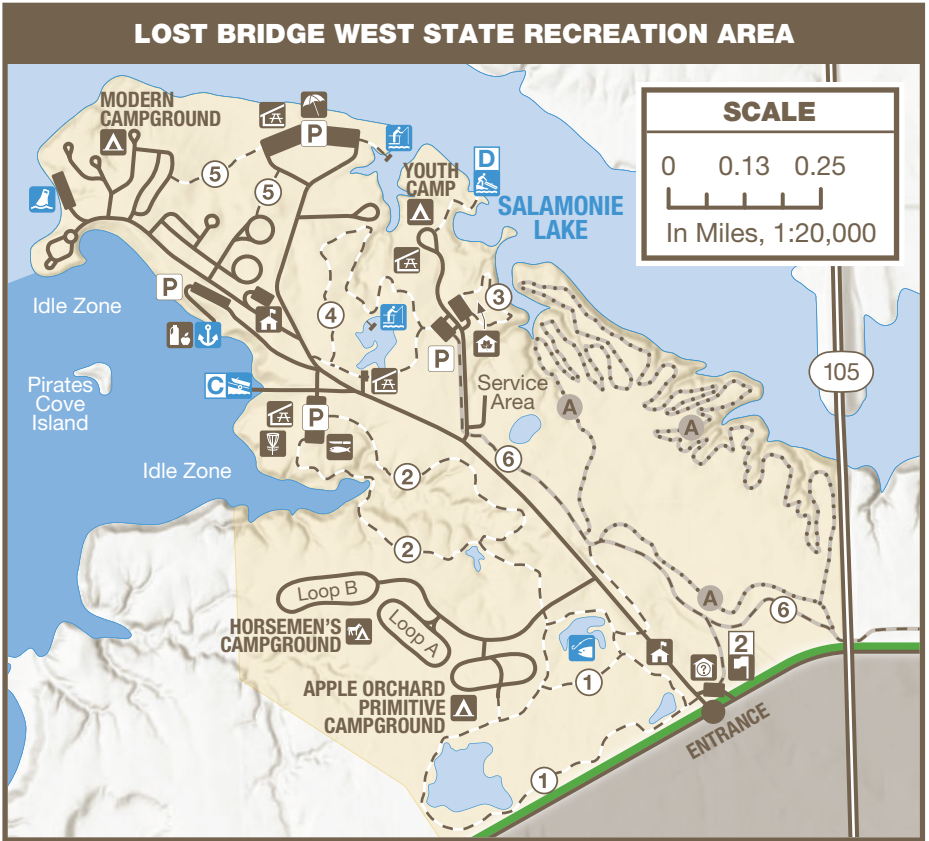
SALAMONIE LAKE

9214 Lost Bridge West | Andrews, IN 46702 | 260-468-2125
 12,554 Acres, 2,665 Acre Lake | Established 1967



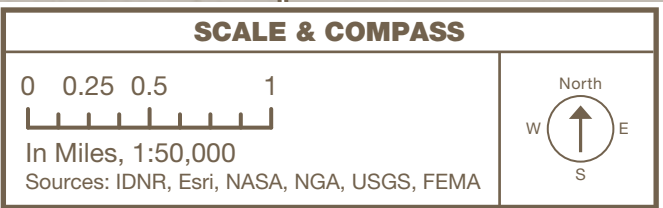
TRAIL INFO			
TRAIL	TRAIL NAME	MILES	TRAIL TYPE
1	Marsh Trail	1.25	Easy
2	Tree Trail	1.0	Moderate
3	Turkey Cove Trail	0.3	Easy
4	Wildlife Mngmnt Trail	1.0	Easy
5	Beach Trail	0.1	Easy
6	Bloodroot Trail	11.0	Moderate
A	Kin-Ti-On-Ki Bike Trail	5.5	Easy

BOAT LAUNCH	
A	Mt. Hope
B	Dora-New Holland
C	Lost Bridge West
D	Youth Canoe
E	Lost Bridge East
F	Mt. Etna
G	Seasonal Canoe
H	Salamonie River 1
I	Salamonie River 2



LEGEND			
	Property Boundary		Boat Launch
	Private Property		Small craft launch
	Water		Marina
	Nature Preserve		Mooring Area
	State Forest		Fishing Pier
	Recreation Area		Fishing Pond
	Road		Check-in Station
	Hiking Trail		Gatehouse
	Hike/Bike Trail		Interpretive Center
	Mountain Bike Trail		Picnic Shelter
	Wildlife Mngmnt Unit		Campground
	Parking		Horsemen's Camp
	Property Office		Camp Store
	Restroom		Beach
	Vault Toilet		Fish Cleaning Stn.
	Army Corps Office		Disc Golf
	Dam		Snowmobile Trail

SPECIAL AREAS	
	Lake Idle Zone
	Safety Zone (SRAs)
	Wildlife Refuge
	Seasonal Refuge
	U.S. Army Corps (no hunting)





OUR STORY

Managing Salamonie Lake requires an understanding of its lands and waters.

The underlying bedrock of Salamonie Lake formed when the region was covered by a shallow, warm ocean. Debris accumulated on the ocean floor, eventually forming layers of solid limestone and dolomite.

During the last ice age, glaciers left behind a series of moraines, hilly bands of rocks and gravel. The moraines dammed the glacial meltwater, creating a lake. The lake eventually breached the dam in a rushing torrent, leaving behind today's path of the Wabash and Salamonie rivers.

Dense forests once blanketed the region. For thousands of years, the Myaamia (Miami) hunted, gathered wild plants, planted crops, and raised their families here.

As European settlers entered the area, pressure led to the forced removal of the Myaamia. A few Myaamia families were allowed to remain, and communities continue in Indiana today.

Frederick Kindley settled here in 1841, building the first water-powered mill in the region. Freedom seekers escaping Southern slavery used the Kindley farm as stop on the Underground Railroad.

In 1958, the U.S. Army Corps of Engineers (USACE) built three dams in this area to reduce flooding. While the USACE manages Salamonie Lake, the surrounding land is leased to the DNR for recreation and wildlife management.

Today, habitats are managed by constructing wetlands, adding native plantings, removing invasive plants, and conducting prescribed fires to change some areas to grasslands while leaving others to grow into forests. The result is a greater diversity of plant and animal life.

Whether coming for swimming, hunting, fishing, hiking, snowmobiling, disc golf, horseback riding, or a visit to the interpretive center, Salamonie Lake offers something for everyone.



RULES & REGULATIONS

- Please obey all property rules & regulations.

on.IN.gov/INStateParksRules



ACTIVITIES & FACILITIES

- Look for these icons on the map.

ACTIVITIES: Basketball court, volleyball and horseshoe pits, disc golf, playgrounds, wildlife viewing areas, hiking and biking trails.

BEACH: Open Memorial Day through Labor Day. The only designated swimming area on property. Portable toilets and vending available nearby. No alcohol allowed. Beach closed when flooded.

BOAT LAUNCH: Concrete ramps available. All embayments are idle zones.

SMALL BOAT LAUNCH: Canoes, kayaks and other small craft. Located on the Salamonie River and at Lost Bridge West Youth Camp.

CAMPING: Includes electric, primitive and youth camping. Only in designated areas.

HORSE CAMPING: Primitive. Must have your own horse(s). Only in designated area.

CAMP STORE: Located next to the marina. Firewood, ice, and groceries are available.

FISHING: Bluegill, crappie, catfish, redear, walleye, and bass are common. State fishing license required. Ice fishing also available.

HIKING: Trails wind in and out of woods and clearings, follow pond perimeters and the reservoir boundary. Please observe and abide by all trail signs. Motorized wheelchair available. Inquire at property office.

HUNTING: Rabbit, raccoon, squirrel, deer, woodcock, waterfowl, dove, turkey, fox, rail, snipe and coyote are common. All hunters are required by law to carry and return a hunting permit card to a hunter check-in station.

INTERPRETIVE NATURALIST SERVICE: Interpretive center, raptor center, wildlife viewing windows and surrounding trails. Schedules are at InterpretiveServices.IN.gov or 260-468-2127.

MARINA: A private concession that provides boat rental, fuel, concessions, and overnight and seasonal mooring.

MOUNTAIN BIKING: A five and a half mile beginner level trail.

PICNIC SHELTERS: May include picnic tables, grills, restrooms. Reserve at camp.IN.gov.

SNOWMOBILING: 40 miles of trail available. Trails open Dec. 1 to Mar. 31, when posted as open. Snowmobile must be registered.



HIKING TRAILS

- For safety, please stay on marked trails.
- Wear hunter orange during hunting seasons.

TRAIL & DESCRIPTION	DISTANCE	DIFFICULTY
1. Marsh Trail	1.5 mi.	Easy

Loop trail that begins and ends in the Apple Orchard primitive campground and traverses a marshy area.

2. Tree Trail	1.25 mi.	Moderate
----------------------	----------	----------

Connects the Apple Orchard primitive campground to the boat launch parking lot.

3. Turkey Cove Trail	0.3 mi.	Easy
-----------------------------	---------	------

Begins and ends at the Interpretive Center parking lot. Encircles the Interpretive Center.

4. Wildlife Mngmnt Trail	1.0 mi.	Easy
---------------------------------	---------	------

Loop trail begins and ends at the Interpretive Center parking. Encircles the fishing pond.

5. Beach Trail	0.1 mi.	Easy
-----------------------	---------	------

Short walking trail from campground to beach.

6. Bloodroot Trail	11 mi.	Moderate
---------------------------	--------	----------

Available for both hiking and biking. The trail wanders through fields and woods over hills and valleys. It traces the bluffs overlooking the lake.



MOUNTAIN BIKING TRAILS

- For safety, please stay on marked trails.

TRAIL & DESCRIPTION	DISTANCE	DIFFICULTY
A. Kin-Ti-On-Ki Trail	5.0 mi.	Easy/Beginner

Located in Lost Bridge West State Rec. Area.



RECREATION TRAILS

- For safety, please stay on marked trails.

TRAIL & DESCRIPTION	DISTANCE	SIGNAGE
Snowmobile Trail	40 mi.	Orange

See separate trail map. Follow all posted signs.

Bridle Trail	10 mi.	Brown
---------------------	--------	-------

See separate trail map. Follow all posted signs. Must have horse tag.

Memories made naturally.
INDIANA STATE PARKS

DISCOVER • CHALLENGE • EXPLORE

HOOSIER QUEST-Pin & Patch Program

Each state park offers you the opportunity to complete tasks to earn a patch or property pin.

on.IN.gov/hoosierquest

BOOK YOUR STAY • RESERVE TODAY

GET OUT and GO CAMPING

Call or go online to make your reservation for all types of

- Camping
- Family Cabins
- Shelters

Includes state parks, reservoirs and forests.

1-866-6campIN (1-866-622-6746)

camp.IN.gov

STAY IN at a STATE PARK INN

Call or go online to make your reservation for a(n)

- State Park Inn
- Inns-managed Cabin

Seven State Parks include Inns: Brown County, Clifty Falls, Fort Harrison, McCormick's Creek, Spring Mill, Turkey Run and Pokagon.

1-877-lodges1 (1-877-563-4371)

IndianalInns.com



For a full list of events, visit interpretiveservices.IN.gov



Please carry out all trash you produce to help keep the property clean and beautiful for all to enjoy!



FOLLOW US

OUTDOOR INDIANA Subscribe to Outdoor Indiana magazine today, Visit OutdoorIndiana.org or call 317-233-3046.

The programs, services, facilities, and activities of the Indiana Department of Natural Resources are available to everyone. DNR prohibits discrimination on the basis of race, color, national origin, age, sex, or disability. If you believe that you have been discriminated against in any program, activity, or facility as described above, or if you desire further information please write to: Department of Natural Resources, Executive Office, 402 W. Washington Street, W256, Indianapolis, IN 46204, (317) 232-4020. © 11/2025 Indiana Department of Natural Resources



DNR PROPERTIES NEARBY

- Find more DNR properties at on.IN.gov/recfinder.

SALAMONIE RIVER STATE FOREST

Boating, bridle trails, camping, fishing, hiking, historic features, hunting, picnic area, play/sports area, shelterhouse, wildlife watching, trapping

J. EDWARD ROUSH FISH & WILDLIFE AREA

Boating, boat ramp, fishing, hunting, camping, wildlife watching, shooting range



TRUE TALES

- **RECREATION FEATURE:** Salamonie Lake offers more miles of trails for hiking, snowmobiling, horseback riding, and biking than any other northern Indiana property. Additionally, 30 wetlands contribute to excellent birdwatching.
- **LANDSCAPE FEATURE:** At one point, 90% of the land that makes up Salamonie Lake was farmland. Old fields, fencerows, scattered woodlots, and meandering streams provide interesting diversity for every visit.
- **PARTNERSHIP FEATURE:** As the second largest reservoir of the Upper Wabash Reservoirs, the U.S. Army Corps of Engineers regulates the water level and operates the dam for flood control. The DNR manages the multiple-use recreation and wildlife areas.



IMPORTANT INFORMATION

DAM			
Type:	earth fill		
Maximum height:	133 feet		
Length:	6,100 feet		
Drainage area above dam:	553 sq. miles		
OPERATING LEVELS			
	Elevation (Feet mean sea level)	Area (Acres)	Length (Miles)
Winter Pool	730	868	11
Summer Pool	755	2,665	17
Flood Pool	793	9,340	30



SALAMONIE LAKE



Salamonie Lake
9214 Lost Bridge West
Andrews, IN 46702

(260) 468-2125

on.IN.gov/salamonielake

salamonielake@dnr.IN.gov

on.IN.gov/stateparks