



Anatoxin-A ELISA Summary Report

Office of Water Quality - Watershed Assessment and Planning Branch

Sample #	Location	Date Collected	Date Analyzed	Conc. (ppb)
AB30320	Paynetown SRA	8/21/2017	8/23/2017	< 0.40
AB30321	Starve Hollow SRA	8/21/2017	8/23/2017	< 0.40
AB30322	Hardy Lake SRA	8/21/2017	8/23/2017	< 0.40
AB30323	Whitewater Memorial SP	8/22/2017	8/23/2017	< 0.40
AB30324	Quakertown SRA	8/22/2017	8/23/2017	< 0.40
AB30325	Mounds SRA	8/22/2017	8/23/2017	0.451
AB30326	Raccoon Lake SRA	8/22/2017	8/23/2017	< 0.40
AB30327	Quakertown (Field Duplicate)	8/22/2017	8/23/2017	< 0.40
AB30328	Field Blank	8/22/2017	8/23/2017	< 0.40
AB30320LD	Paynetown (Lab Duplicate)	8/21/2017	8/23/2017	< 0.40
20170823LB	Lab Blank	8/21/2017	8/23/2017	< 0.40



Assay Calibration Report

Assay Information

Assay Name: Anatoxin a ELISA (2 rep) Units: ng/mL
 Assay Mode: 4-Parameter Logistic # of decimals: 3
 Normal: 0.150 - 5.000 Assay Description: ISA

Controls:

Normal Control

Standards:

Std1, Concentration = 0.000, Minimum number to use: 2
 Std2, Concentration = 0.150, Minimum number to use: 2
 Std3, Concentration = 0.400, Minimum number to use: 2
 Std4, Concentration = 1.000, Minimum number to use: 2
 Std5, Concentration = 2.500, Minimum number to use: 2
 Std6, Concentration = 5.000, Minimum number to use: 2

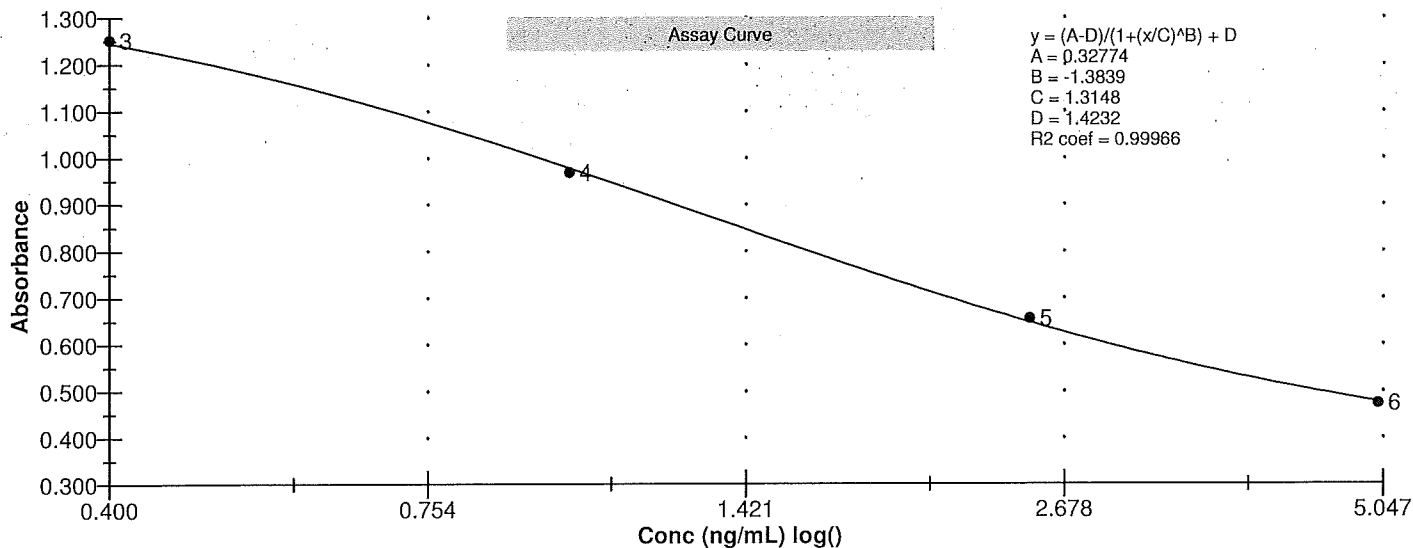
Curve valid interval: 7 days 0 hours

Axis Mode: Y = Abs, X = Log(Conc)

Assay Calibration and Statistics

Name	Absorbance	Concentration	Position
8/23/2017 1:47:23 PM			
Std1	1.421 Abs	0.015 ng/mL	B01
Std3	1.253 Abs	0.387 ng/mL	E01
Std4	0.940 Abs	1.108 ng/mL	G01
Std4	0.998 Abs	0.947 ng/mL	H01
Std5	0.650 Abs	2.475 ng/mL	A02
Std5	0.659 Abs	2.405 ng/mL	B02
Std6	0.468 Abs	> 5.000 ng/mL	C02
Std6	0.478 Abs	4.965 ng/mL	D02
8/23/2017 1:47:23 PM			
Normal Control	1.084 Abs	0.737 ng/mL	F02
Normal Control	0.984 Abs	0.984 ng/mL	E02

Name	Mean Abs	SD Abs	CV Abs	Mean Conc	SD Conc	CV Conc	Diff Conc
Std1	1.421			0.015			
Std3	1.253			0.387			-3.25
Std4	0.969	0.041	4.23	1.028	0.114	11.08	2.80
Std5	0.655	0.006	0.97	2.440	0.049	2.03	-2.40
Std6	0.473	0.007	1.49				-100.00
Normal Control	1.034	0.071	6.84	0.860	0.175	20.30	





Test Report

Test Information

Name/ID	Assay	Absorbance	Concentration	Interpretation	Reference	Position
8/23/2017 1:47:23 PM						
Std1	Anatoxin a ELISA (2 rep)	1.079 Abs	0.805 ng/mL		0.000	A01
Std1	Anatoxin a ELISA (2 rep)	1.421 Abs	< 0.000 ng/mL		0.000	B01
Std2	Anatoxin a ELISA (2 rep)	1.326 Abs	< 0.000 ng/mL		0.150	C01
Std2	Anatoxin a ELISA (2 rep)	1.308 Abs	< 0.000 ng/mL		0.150	D01
Std3	Anatoxin a ELISA (2 rep)	1.253 Abs	0.330 ng/mL		0.400	E01
Std3	Anatoxin a ELISA (2 rep)	1.286 Abs	0.169 ng/mL		0.400	F01
Std4	Anatoxin a ELISA (2 rep)	0.940 Abs	1.153 ng/mL		1.000	G01
Std4	Anatoxin a ELISA (2 rep)	0.998 Abs	1.003 ng/mL		1.000	H01
Std5	Anatoxin a ELISA (2 rep)	0.650 Abs	2.330 ng/mL		2.500	A02
Std5	Anatoxin a ELISA (2 rep)	0.659 Abs	2.270 ng/mL		2.500	B02
Std6	Anatoxin a ELISA (2 rep)	0.468 Abs	> 5.000 ng/mL		5.000	C02
Std6	Anatoxin a ELISA (2 rep)	0.478 Abs	> 5.000 ng/mL		5.000	D02
Normal Control	Anatoxin a ELISA (2 rep)	0.984 Abs	0.984 ng/mL			E02
Normal Control	Anatoxin a ELISA (2 rep)	1.084 Abs	0.737 ng/mL			F02
AB30320	Anatoxin a ELISA (2 rep)	1.409 Abs	0.064 ng/mL	LOW	0.150 - 5.000	G02
AB30320	Anatoxin a ELISA (2 rep)	1.534 Abs [1.4715] {6.0 CV}	< 0.000 ng/mL [< 0.000]	Out(LR) [Out(LR)]	0.150 - 5.000	H02
AB30321	Anatoxin a ELISA (2 rep)	1.272 Abs	0.385 ng/mL		0.150 - 5.000	A03
AB30321	Anatoxin a ELISA (2 rep)	1.316 Abs [1.2940] {2.4 CV}	0.290 ng/mL [0.338] {19.9 CV}		0.150 - 5.000	B03
AB30322	Anatoxin a ELISA (2 rep)	1.327 Abs	0.267 ng/mL		0.150 - 5.000	C03
AB30322	Anatoxin a ELISA (2 rep)	1.276 Abs [1.3015] {2.8 CV}	0.376 ng/mL [0.321] {24.0 CV}		0.150 - 5.000	D03
AB30323	Anatoxin a ELISA (2 rep)	1.435 Abs	< 0.000 ng/mL	Out(LR)	0.150 - 5.000	E03
AB30323	Anatoxin a ELISA (2 rep)	1.522 Abs [1.4785] {4.2 CV}	< 0.000 ng/mL [< 0.000]	Out(LR) [Out(LR)]	0.150 - 5.000	F03
AB30324	Anatoxin a ELISA (2 rep)	1.464 Abs	< 0.000 ng/mL	Out(LR)	0.150 - 5.000	G03
AB30324	Anatoxin a ELISA (2 rep)	1.335 Abs [1.3995] {6.5 CV}	0.249 ng/mL [0.091]	[Low]	0.150 - 5.000	H03
AB30325	Anatoxin a ELISA (2 rep)	1.240 Abs	0.453 ng/mL		0.150 - 5.000	A04
AB30325	Anatoxin a ELISA (2 rep)	1.242 Abs [1.2410] {0.1 CV}	0.449 ng/mL [0.451] {0.6 CV}		0.150 - 5.000	B04
AB30326	Anatoxin a ELISA (2 rep)	1.256 Abs	0.419 ng/mL		0.150 - 5.000	C04
AB30326	Anatoxin a ELISA (2 rep)	1.315 Abs [1.2855] {3.2 CV}	0.293 ng/mL [0.356] {25.0 CV}		0.150 - 5.000	D04
AB30327	Anatoxin a ELISA (2 rep)	1.114 Abs	0.737 ng/mL		0.150 - 5.000	E04
AB30327	Anatoxin a ELISA (2 rep)	1.424 Abs [1.2690] {17.3 CV}	< 0.000 ng/mL [0.392]	Out(LR)	0.150 - 5.000	F04
AB30328	Anatoxin a ELISA (2 rep)	1.284 Abs	0.359 ng/mL		0.150 - 5.000	G04
AB30328	Anatoxin a ELISA (2 rep)	1.557 Abs [1.4205] {13.6 CV}	< 0.000 ng/mL [0.020]	Out(LR) [Low]	0.150 - 5.000	H04
AB30329	Anatoxin a ELISA (2 rep)	1.365 Abs	0.180 ng/mL		0.150 - 5.000	A05
AB30329	Anatoxin a ELISA (2 rep)	1.349 Abs [1.3570] {0.8 CV}	0.218 ng/mL [0.199] {13.5 CV}		0.150 - 5.000	B05
AB30320LD	Anatoxin a ELISA (2 rep)	1.272 Abs	0.385 ng/mL		0.150 - 5.000	C05
AB30320LD	Anatoxin a ELISA (2 rep)	1.325 Abs [1.2985] {2.9 CV}	0.271 ng/mL [0.329] {24.6 CV}		0.150 - 5.000	D05
20170823LB	Anatoxin a ELISA (2 rep)	1.285 Abs	0.357 ng/mL		0.150 - 5.000	E05
20170823LB	Anatoxin a ELISA (2 rep)	1.409 Abs [1.3470] {6.5 CV}	0.064 ng/mL [0.222] {98.4 CV}	LOW	0.150 - 5.000	F05

The data in this report is preliminary without a quality control report. This data is not warranted for accuracy or other purposes.

David Jordan

Laboratory Analyst Signature

8/24/2017

Date