



## Anatoxin-A ELISA Summary Report

Office of Water Quality - Watershed Assessment and Planning Branch

Sample #	Location	Date Collected	Date Analyzed	Conc. (ppb)
AB29663	Deam Lake SRA	6/26/2017	6/28/2017	< 0.40
AB29664	Hardy Lake SRA	6/26/2017	6/28/2017	< 0.40
AB29664LD	Hardy Lake (Lab Duplicate)	6/26/2017	6/28/2017	< 0.40
AB29665	Mounds SRA	6/26/2017	6/28/2017	< 0.40
AB29666	Chain O'Lakes SP	6/27/2017	6/28/2017	< 0.40
AB29667	Potato Creek SP	6/27/2017	6/28/2017	< 0.40
AB29661	Deam Lake (Field Duplicate)	6/26/2017	6/28/2017	< 0.40
AB29662	Field Blank	6/26/2017	6/28/2017	< 0.40
20170621LB	Lab Blank	6/28/2017	6/28/2017	< 0.40



## Assay Calibration Report

### Assay Information

Assay Name: Anatoxin a ELISA (2 rep) Units: ng/mL  
Assay Mode: 4-Parameter Logistic # of decimals: 3  
Normal: 0.150 - 5.000 Assay Description: ELISA

### Controls:

Normal Control

### Standards:

Std1, Concentration = 0.000, Minimum number to use: 2

Std2, Concentration = 0.150, Minimum number to use: 2

Std3, Concentration = 0.400, Minimum number to use: 2

Std4, Concentration = 1.000, Minimum number to use: 2

Std5, Concentration = 2.500, Minimum number to use: 2

Std6, Concentration = 5.000, Minimum number to use: 2

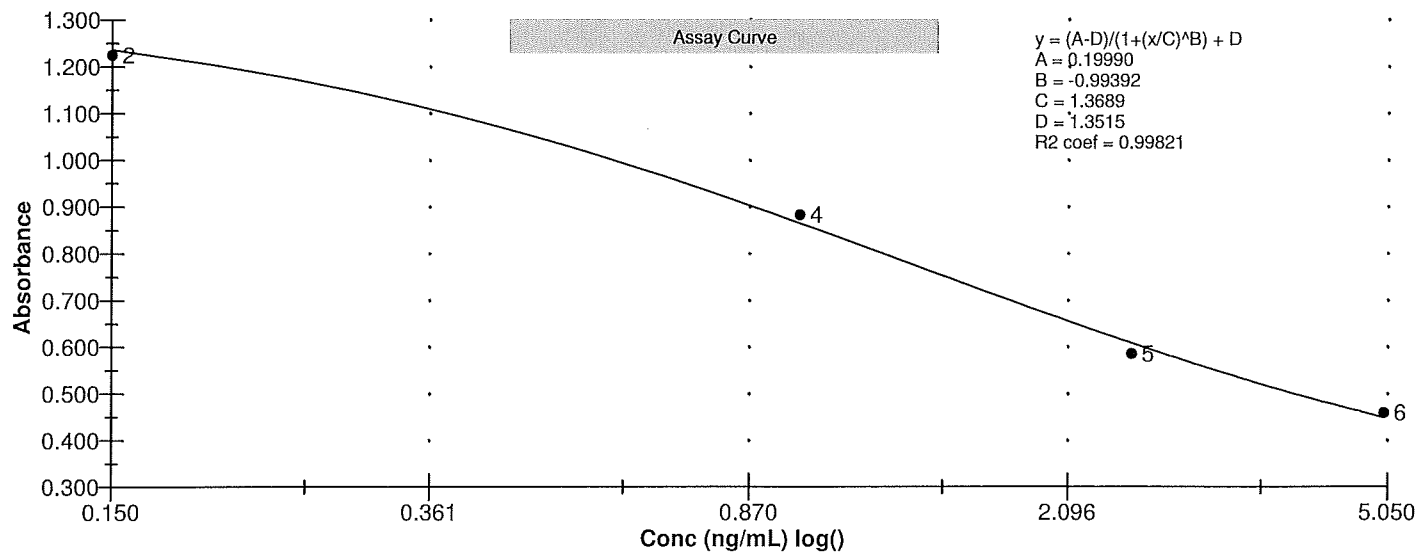
Curve valid interval: 7 days 0 hours

Axis Mode: Y = Abs, X = Log(Conc)

### Assay Calibration and Statistics

Name	Absorbance	Concentration	Position
6/28/2017 5:01:21 PM			
Std1	1.357 Abs	< 0.000 ng/mL	A01
Std2	1.225 Abs	0.167 ng/mL	C01
Std4	0.883 Abs	0.937 ng/mL	G01
Std5	0.549 Abs	3.164 ng/mL	A02
Std5	0.622 Abs	2.375 ng/mL	B02
Std6	0.459 Abs	4.750 ng/mL	C02
Std6	0.459 Abs	4.750 ng/mL	D02
6/28/2017 5:01:21 PM			
Normal Control	1.007 Abs	0.581 ng/mL	F02
Normal Control	0.923 Abs	0.808 ng/mL	E02

Name	Mean Abs	SD Abs	CV Abs	Mean Conc	SD Conc	CV Conc	Diff Conc
Std1	1.357						
Std2	1.225			0.167			11.33
Std4	0.883			0.937			-6.30
Std5	0.586	0.052	8.82	2.770	0.558	20.14	10.80
Std6	0.459	0.000	0.00	4.750	0.000	0.00	-5.00
Normal Control	0.965	0.059	6.16	0.694	0.161	23.11	





# Test Report

## Test Information

Name/ID	Assay	Absorbance	Concentration	Interpretation	Reference	Position
6/28/2017 5:01:21 PM						
Std1	Anatoxin a ELISA (2 rep)	1.357 Abs	< 0.000 ng/mL		0.000	A01
Std1	Anatoxin a ELISA (2 rep)	1.092 Abs	0.570 ng/mL		0.000	B01
Std2	Anatoxin a ELISA (2 rep)	1.225 Abs	0.163 ng/mL		0.150	C01
Std2	Anatoxin a ELISA (2 rep)	1.376 Abs	< 0.000 ng/mL		0.150	D01
Std3	Anatoxin a ELISA (2 rep)	0.877 Abs	1.195 ng/mL		0.400	E01
Std3	Anatoxin a ELISA (2 rep)	1.277 Abs	< 0.000 ng/mL		0.400	F01
Std4	Anatoxin a ELISA (2 rep)	0.883 Abs	1.175 ng/mL		1.000	G01
Std4	Anatoxin a ELISA (2 rep)	1.084 Abs	0.592 ng/mL		1.000	H01
Std5	Anatoxin a ELISA (2 rep)	0.549 Abs	3.120 ng/mL		2.500	A02
Std5	Anatoxin a ELISA (2 rep)	0.622 Abs	2.440 ng/mL		2.500	B02
Std6	Anatoxin a ELISA (2 rep)	0.459 Abs	4.665 ng/mL		5.000	C02
Std6	Anatoxin a ELISA (2 rep)	0.459 Abs	4.665 ng/mL		5.000	D02
Normal Control	Anatoxin a ELISA (2 rep)	0.923 Abs	0.808 ng/mL			E02
Normal Control	Anatoxin a ELISA (2 rep)	1.007 Abs	0.581 ng/mL			F02
AB29663	Anatoxin a ELISA (2 rep)	1.333 Abs	0.024 ng/mL	LOW	0.150 - 5.000	G02
AB29663	Anatoxin a ELISA (2 rep)	1.323 Abs [1.3280] {0.5 C	0.037 ng/mL [0.031] {30.1 CV}	Low [Low]	0.150 - 5.000	H02
AB29664	Anatoxin a ELISA (2 rep)	1.147 Abs	0.322 ng/mL		0.150 - 5.000	A03
AB29664	Anatoxin a ELISA (2 rep)	1.297 Abs [1.2220] {8.7 C	0.074 ng/mL [0.188] {88.6 CV}	LOW	0.150 - 5.000	B03
AB29664LD	Anatoxin a ELISA (2 rep)	1.434 Abs	< 0.000 ng/mL	Out(LR)	0.150 - 5.000	C03
AB29664LD	Anatoxin a ELISA (2 rep)	1.386 Abs [1.4100] {2.4 C	< 0.000 ng/mL [< 0.000]	Out(LR) [Out(LR)]	0.150 - 5.000	D03
AB29665	Anatoxin a ELISA (2 rep)	1.152 Abs	0.312 ng/mL		0.150 - 5.000	E03
AB29665	Anatoxin a ELISA (2 rep)	1.399 Abs [1.2755] {13.7	< 0.000 ng/mL [0.104]	Out(LR) [Low]	0.150 - 5.000	F03
AB29666	Anatoxin a ELISA (2 rep)	1.465 Abs	< 0.000 ng/mL	Out(LR)	0.150 - 5.000	G03
AB29666	Anatoxin a ELISA (2 rep)	1.299 Abs [1.3820] {8.5 C	0.070 ng/mL [< 0.000]	Low [Out(LR)]	0.150 - 5.000	H03
AB29667	Anatoxin a ELISA (2 rep)	1.250 Abs	0.144 ng/mL	LOW	0.150 - 5.000	A04
AB29667	Anatoxin a ELISA (2 rep)	1.169 Abs [1.2095] {4.7 C	0.280 ng/mL [0.209] {45.4 CV}		0.150 - 5.000	B04
AB29668	Anatoxin a ELISA (2 rep)	1.387 Abs	< 0.000 ng/mL	Out(LR)	0.150 - 5.000	C04
AB29668	Anatoxin a ELISA (2 rep)	1.341 Abs [1.3640] {2.4 C	0.013 ng/mL [< 0.000]	Low [Out(LR)]	0.150 - 5.000	D04
AB29661	Anatoxin a ELISA (2 rep)	1.427 Abs	< 0.000 ng/mL	Out(LR)	0.150 - 5.000	E04
AB29661	Anatoxin a ELISA (2 rep)	1.309 Abs [1.3680] {6.1 C	0.052 ng/mL [< 0.000]	Low [Out(LR)]	0.150 - 5.000	F04
AB29662	Anatoxin a ELISA (2 rep)	1.286 Abs	0.089 ng/mL	LOW	0.150 - 5.000	G04
AB29662	Anatoxin a ELISA (2 rep)	1.344 Abs [1.3150] {3.1 C	0.010 ng/mL [0.048] {112.9 CV}	Low [Low]	0.150 - 5.000	H04
20170628LB	Anatoxin a ELISA (2 rep)	1.348 Abs	0.004 ng/mL	LOW	0.150 - 5.000	A05
20170628LB	Anatoxin a ELISA (2 rep)	1.128 Abs [1.2380] {12.6	0.360 ng/mL [0.163] {138.3 CV}		0.150 - 5.000	B05

The data in this report is preliminary without a quality control report. This data is not warranted for accuracy or other purposes.

*David Jordan*

Laboratory Analyst Signature

*6/28/2017*

Date