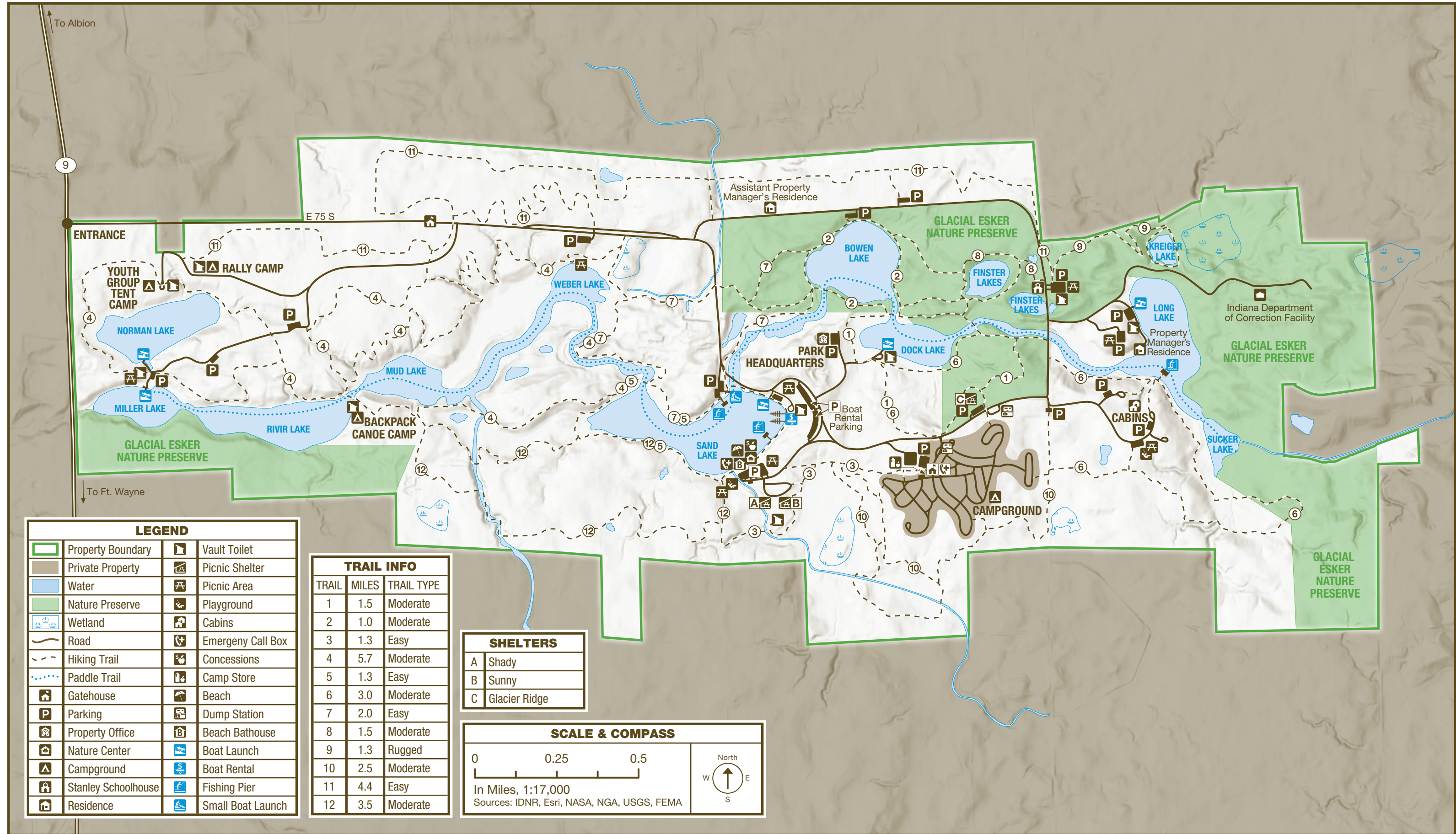


CHAIN O' LAKES STATE PARK

2355 E. 75 South | Albion, IN 46701 | 260-636-2654
2,718 Acres | Established 1960



LEGEND			
	Property Boundary		Vault Toilet
	Private Property		Picnic Shelter
	Water		Picnic Area
	Nature Preserve		Playground
	Wetland		Cabins
	Road		Emergency Call Box
	Hiking Trail		Concessions
	Paddle Trail		Camp Store
	Gatehouse		Beach
	Parking		Dump Station
	Property Office		Beach Bathhouse
	Nature Center		Boat Launch
	Campground		Boat Rental
	Stanley Schoolhouse		Fishing Pier
	Residence		Small Boat Launch

TRAIL INFO		
TRAIL	MILES	TRAIL TYPE
1	1.5	Moderate
2	1.0	Moderate
3	1.3	Easy
4	5.7	Moderate
5	1.3	Easy
6	3.0	Moderate
7	2.0	Easy
8	1.5	Moderate
9	1.3	Rugged
10	2.5	Moderate
11	4.4	Easy
12	3.5	Moderate

SHELTERS	
A	Shady
B	Sunny
C	Glacier Ridge

SCALE & COMPASS	
0	0.25 0.5
In Miles, 1:17,000	
Sources: IDNR, Esri, NASA, NGA, USGS, FEMA	



THE PARK STORY

Roughly 15,000 years ago, the Wisconsin ice sheet ceased its southward advance and began melting. Huge ice blocks broke free and were buried beneath rocks and gravel. As the ice blocks slowly melted, they formed deep, water-filled depressions that are the kettle lakes of Chain O'Lakes State Park.

This park is in the homeland of the Myaamia (Miami). The Bodwéwadmí (Potawatomi) and other tribes also shared the land, which provided abundant plants and wildlife for food, clothing, tools, and medicines.

A series of treaties ceded Indigenous land to the United States government and led to the forced removal of most Native people.

William Bowen and his wife Elizabeth arrived in this area in 1837. Unable to afford land, they occupied 40 acres near the native village on the north side of the lake and cleared the land for farming. As a result, the government allowed them to purchase the acreage in 1839 at a low price.

As other farm families settled, the need for schoolhouses arose. These one-room buildings were located to serve township children within 4 miles. The Stanley Schoolhouse and the Mulberry Schoolhouse were both on land that's now part of the state park.

With the support of Noble, Whitley and Allen counties, a county park board purchased 1,200 acres to which the state added 300 more. The park now comprises 2,718 acres.

Glacial Esker Nature Preserve offers examples of glacial features, upland forest, wetlands, ravines, and associated plant communities. Some areas are maintained as open field habitat. Wetlands along lake edges provide food, nesting, and resting areas for a variety of wildlife. Guests enjoy fishing, canoeing, swimming, attending interpretive programs, and hiking.

RULES & REGULATIONS

- Please obey all property rules & regulations.

on.IN.gov/INStateParksRules



ACTIVITIES & FACILITIES

- Look for these icons on the map.

BOATS & CANOES: Boats, canoes, kayaks and paddleboats are rented by the hour or day. Life jackets available. Only electric trolling motors are allowed.

CAMPING: Campground equipped with flush toilets, hot water and showers. Occupancy is limited to 14 consecutive nights. Most sites accommodate trailers. Electricity and dump stations available. Camping reservations available at camp.IN.gov.

FAMILY CABINS: Family cabins may be rented from April through October. Cabins are rented by the week from Saturday to Saturday during June, July and August. They may be rented by the night during April, May, September and October. Cabins are non-smoking, not rented to persons younger than 21 and pets are prohibited.

FISHING: Bass, bluegill and other small gamefish are common. State fishing license required, purchase at the park office.

GENERAL STORE: Located in the campground. Firewood, ice, groceries and souvenirs.

HIKING: More than 29 miles of easy to rugged hiking trails are available.

INTERPRETIVE NATURALIST SERVICE: Naturalist available year-round. Program schedules are available at InterpretiveServices.IN.gov and 260-636-2654.

PICNIC AREAS: Tables, toilet facilities, playground equipment and playfields.

REFRESHMENT STAND: Soft drinks, ice cream and snacks available at the beach refreshment stand. Operating hours posted.

SHELTERS: Reservations available at camp.IN.gov

STANLEY SCHOOLHOUSE: Built in 1915 and listed on the National Register of Historic Places. Visit and take a step back in time for free. Open weekends from May-October.

SWIMMING: Free. The bathhouse and beach are open the Saturday before Memorial Day and no later than Labor Day.

TELEPHONE: Located near the campground control station and the beach.

ADDITIONAL INFORMATION: Activities and facilities information available at the park office.



HIKING TRAILS

- For safety, please stay on marked trails.
- Bicycles prohibited on hiking trails.

TRAIL & DESCRIPTION	DISTANCE	DIFFICULTY
Trail 1 Begins north of campground, follows a ridge through the woods before dropping down in a valley, crosses two channels as it circles around the north side of Dock Lake, and returns to the campground.	1.5 mi.	Moderate
Trail 2 Begins at the parking lot on the north shore of Bowen Lake, drops down and follows the lakeshore through the woods and returns to the parking lot.	1 mi.	Moderate
Trail 3 Connects campground to the beach and nature center.	1.3 mi.	Easy
Trail 4 Passes four lakes, wooded areas, swamps and deep ravines.	5.7 mi.	Moderate
Trail 5 Follows shore around Sand Lake; flat and wooded.	1.3 mi.	Easy
Trail 6 Trail 6 can be accessed from the cabins, campground or Dock Lake boat ramp. Follows the southern shoreline of both Dock and Long lakes, and the channel between the two.	3 mi.	Moderate
Trail 7 Begins at Sand Lake fishing pier, follows the channel to Bowen Lake, turns west to connect with Weber Lake and returns along the channel to Sand Lake. It winds through lowlands, along two different channels, and through an upland forest.	2 mi.	Easy
Trail 8 A self-guided nature trail (brochure provided), begins at Stanley Schoolhouse, circles Finster Lake and crosses a glacial kame, and returns to the schoolhouse.	1.5 mi.	Moderate
Trail 9 Starts at the schoolhouse parking area, travels through the Henslow's sparrow restoration area open field, through a wetland, to the top of wooded glacial esker, and around Kreiger Lake.	1.3 mi.	Rugged

Memories made naturally.

INDIANA STATE PARKS

DISCOVER • CHALLENGE • EXPLORE

HOOSIER QUEST-Pin & Patch Program

Each state park offers you the opportunity to complete tasks to earn a patch or property pin.

on.IN.gov/hoosierquest

BOOK YOUR STAY • RESERVE TODAY

GET OUT and GO CAMPING

Call or go online to make your reservation for all types of

- Camping
- Family Cabins
- Shelters

Includes state parks, reservoirs and forests.

1-866-6campIN
(1-866-622-6746)

camp.IN.gov

STAY IN at a STATE PARK INN

Call or go online to make your reservation for a(n)

- State Park Inn
- Inns-managed Cabin

Seven State Parks include Inns: Brown County, Clifty Falls, Fort Harrison, McCormick's Creek, Spring Mill, Turkey Run and Pokagon.

1-877-lodges1
(1-877-563-4371)

IndianalInns.com

For a full list of events, visit interpretiveservices.IN.gov



Please carry out all trash you produce to help keep the property clean and beautiful for all to enjoy!

FOLLOW US



OUTDOOR INDIANA Subscribe to Outdoor Indiana magazine today, Visit OutdoorIndiana.org or call 317-233-3046.

The programs, services, facilities, and activities of the Indiana Department of Natural Resources are available to everyone. DNR prohibits discrimination on the basis of race, color, national origin, age, sex, or disability. If you believe that you have been discriminated against in any program, activity, or facility as described above, or if you desire further information please write to: Department of Natural Resources, Executive Office, 402 W. Washington Street, W256, Indianapolis, IN 46204, (317) 232-4020.

TRAIL & DESCRIPTION	DISTANCE	DIFFICULTY
Trail 10 This trail travels through open rolling hills, making it excellent for cross-country skiing in the winter.	2.5 mi.	Moderate
Trail 11 Connects the Stanley Schoolhouse and Youth Group Tent/Rally campgrounds. This turf-covered trail is great for cross-country running or skiing.	4.4 mi.	Easy
Trail 12 Begins and ends at the beach, travels through glacial topography, hardwood forest, and follows a ridgeline of a deep ravine with a stream.	3.5 mi.	Moderate



DNR PROPERTIES NEARBY

- Find more DNR properties at on.IN.gov/recfinder.

CROOKED LAKE NATURE PRESERVE

hiking, parking, wildlife watching, tree identifying

TRI-COUNTY FISH & WILDLIFE AREA

boating, boat ramps, dog training areas, fishing, hunting, target ranges, trapping, wildlife watching



TRAIL CHALLENGE

- Try one of our challenges and earn merchandise to purchase. Participate in the 9 Lake Challenge at Chain O'Lakes State Park. Visit the website and select your park of choice to learn more.

on.IN.gov/parks-challenges



TRUE TALES

- **STANLEY SCHOOLHOUSE:** The school season of a one-room schoolhouse tended to occur during winter after crops had been harvested but before spring planting. This was so children could help with farm work.
- **ENDANGERED SPECIES:** Henslow's sparrow is a state endangered species in Indiana. It nests in the maintained old field habitat at Chain O'Lakes.
- **INTERESTING FEATURE:** The deepest lake at Chain O'Lakes is Bowen Lake at 65 feet. Dock Lake is the shallowest at 22 feet deep. Several low, wet areas were once lakes that filled in over time.



CHAIN O'LAKES STATE PARK



Chain O'Lakes State Park
2355 E. 75 South
Albion, IN 46701

(260) 636-2654

on.IN.gov/chainolakessp

chainolakessp@dnr.IN.gov

on.IN.gov/stateparks