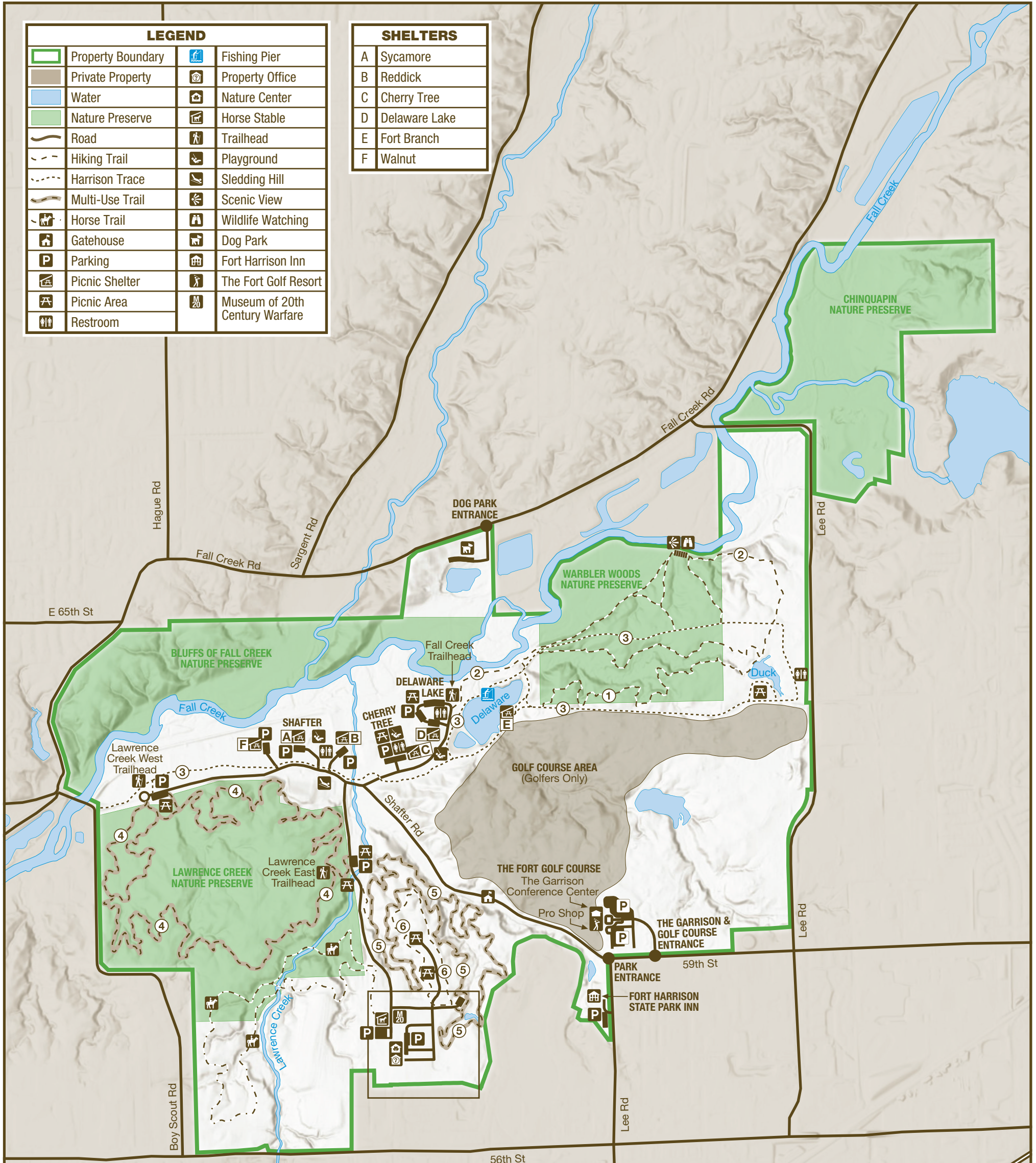


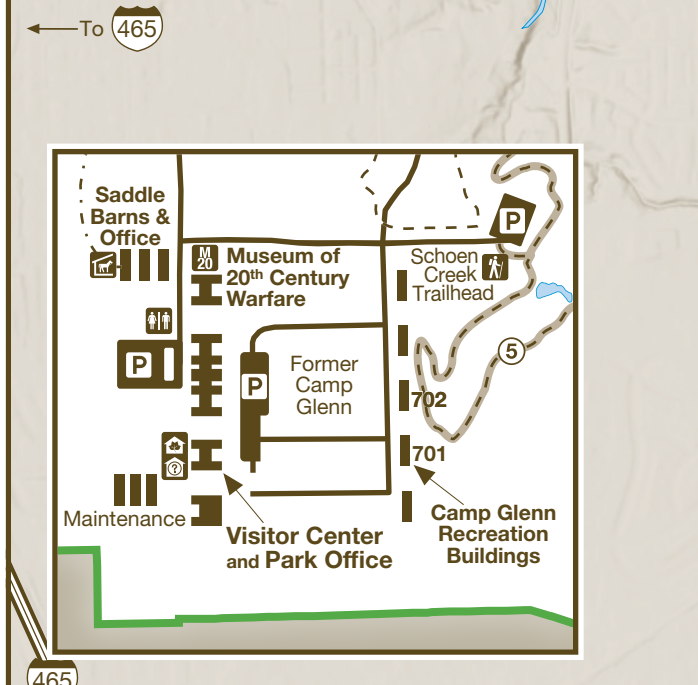
FORT HARRISON STATE PARK

6000 North Post Road | Indianapolis, IN 46216 | 317-591-0904
1,744 Acres | Established 1996

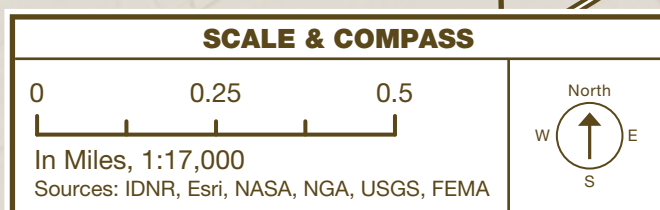


LEGEND	
	Property Boundary
	Private Property
	Water
	Nature Preserve
	Road
	Hiking Trail
	Harrison Trace
	Multi-Use Trail
	Horse Trail
	Gatehouse
	Parking
	Picnic Shelter
	Picnic Area
	Restroom
	Fishing Pier
	Property Office
	Nature Center
	Horse Stable
	Trailhead
	Playground
	Sledding Hill
	Scenic View
	Wildlife Watching
	Dog Park
	Fort Harrison Inn
	The Fort Golf Resort
	Museum of 20th Century Warfare

SHELTERS	
A	Sycamore
B	Reddick
C	Cherry Tree
D	Delaware Lake
E	Fort Branch
F	Walnut



TRAIL INFO			
TRAIL	TRAIL NAME	MILES	TRAIL TYPE
1	Camp Creek	2.0	Moderate
2	Fall Creek	1.3	Moderate
3	Harrison Trace	3.4	Easy
4	Lawrence Creek (multi)	4.3	Moderate
5	Schoen Creek (multi)	3.3	Moderate
6	Tree Line	1.0	Easy



NATURE PRESERVES

Chinquapin: 115 acres
Closed to the public. As a protected rookery, this area hosts a colony of Great Blue Heron in the spring and summer.

Warbler Woods: 135 acres
This deep shady and hardwood forest contains many of Indiana's native trees like Cherry, Walnut, Oak, Maple, and Beech.

Bluffs of Fall Creek: 135 acres
Closed to the public. Bordering the north bank of Fall Creek, a major drainage of Marion County, this preserve comprises a lush Riparian forest and many historic areas from the park's diverse past.

Lawrence Creek: 242 acres
As an upland hardwood forest, this area contains Oak, Hickory, Maple, and the best topography in the park.



THE PARK STORY

Landscape and history blend in northeast Indianapolis at Fort Harrison State Park.

The park's ice age topography was created more than 12,000 years ago as glaciers moved across central Indiana carrying rocks and soil from Canada. Later, their meltwater formed Fall Creek and cut ravines through the deposited glacial soil.

Humans appeared on this landscape at least 8,000 years ago. The rich forests, streams, and abundant wildlife provided food, tools, clothing, and shelter. Woodland tribes such as the Myaamia (Miami) lived here.

The rich soil attracted European settlers from Kentucky and Ohio. By the 1820s, farms began to appear in the region.

In 1904, the War Department announced the purchase of land for "military purposes," and it became Fort Benjamin Harrison. The fort represented early efforts to create a national army from a collection of state militias.

During the next several decades, the fort filled many military roles. In the 1930s, it was headquarters for Indiana's Civilian Conservation Corps. It also was the site of the Citizens' Military Training Camp, a 1930s program that provided military training to young men who would become commissioned officers. During World War II, it was a Prisoner of War (POW) camp.

In 1991, Fort Harrison was decommissioned, and in 1996 it opened as Fort Harrison State Park. The park contains the largest unfragmented woodland tract in central Indiana, an island in a sea of urban development. The park's wooded stream corridor provides a safe area for nesting and migratory species, and a dispersal route for young animals.

Come for a day of hiking, mountain biking, or picnicking; a visit to the park's historic districts; or a longer stay at Fort Harrison State Park Inn.



RULES & REGULATIONS

- Please obey all property rules & regulations.

on.IN.gov/INStateParksRules



ACTIVITIES & FACILITIES

- Look for these icons on the map.

BIKING: Allowed only on paved park roads, designated multi-use trails and the Harrison Trace Trail. Bicycles are prohibited on the golf course.

FISHING: State fishing license required. Check signs and bulletin boards for special regulations.

HORSE TRAIL RIDES: Guided rentals are available during the operating season from April through October. For more information regarding operating hours, lessons, hayrides and special-event rides, call (317) 541-1866 during the season.

MUSEUM OF 20th CENTURY WARFARE (M20CW): Operated by volunteers. Open to the public March through November. Includes displays, a library, special events, re-enactments and a unique model of the USS Indianapolis. Free with park admission.

PICNIC AREAS: Tables, grills, restrooms, playground equipment and playfields available. Make reservations at camp.IN.gov. No camping.

RECREATION BUILDINGS: Two recreation buildings, 701 and 702, located in Camp Glenn, are available for rent. Call (317) 591-0904 for more information.

VISITOR CENTER: Experience the natural and cultural history of the park through park and interpretive programs. Open all year. For more information see InterpretiveServices.IN.gov.

WINTER ACTIVITIES: Sledding hill is open until dusk. Cross-country skiing allowed on park trails. Woodland walks and winter birding are popular. Fireplace in Reddick Shelter.

DOG PARK: 11-acre area equipped with water stations, benches, and waste stations. The dog park provides a space for dog lovers to get outdoors and enjoy a section of the park saved just for them. Contact the office for membership details.



HIKING TRAILS

- For safety, please stay on marked trails.
- Bicycles prohibited on hiking trails.

TRAIL & DESCRIPTION	DISTANCE	DIFFICULTY
Fall Creek Trail	1.3 mi.	Moderate

1.1 miles from start to Duck Pond. Start this trail at the northeast corner of the Delaware Lake picnic area. The trail follows the lowlands along Fall Creek, then heads uphill as it nears Duck Pond. Overall distance can vary by taking one of the three cutoff trails that connect to the Harrison Trace. Excellent for birding, fishing access, and wildflower and tree identification.

Camp Creek Trail	2 mi.	Moderate
-------------------------	-------	----------

Trail begins off Harrison Trace near the eastern banks of Delaware Lake with the apex of the bend passing Duck Pond. This trail passes by an old army rubble pile and has many beautiful vistas from the bluffs of the quaint Camp Creek valley.

Tree Line Trail	1 mi.	Easy
------------------------	-------	------

This mowed trail follows the outer edge of Millenium Grove picnic area. Look for different species of trees and wildflowers along the route.



DNR PROPERTIES NEARBY

- Find more DNR properties at on.IN.gov/recfinder.

MOUNDS STATE PARK

camping, fishing, hiking trails, interpretive services & center, historic features, picnic area, youth/sports area, shelter house, swimming pool, youth tent areas

WILBUR WRIGHT FISH & WILDLIFE AREA

dog training areas, fishing, hunting, target ranges, trapping, wildlife watching



MULTI-USE TRAILS

- For safety, please stay on marked trails.
- Single-track, multi-use, hike and bike trails.

TRAIL & DESCRIPTION	DISTANCE	DIFFICULTY
Harrison Trace	3.4 mi.	Easy

This asphalt surface trail begins at the Delaware Lake picnic area. After passing Delaware Lake, the trail follows the rolling upland above Fall Creek. Although the trail is graded and paved, it is not flat. Much of the trail is tree-covered and wildflowers grow next to the walking surface all season long. This is the easiest route to get to Duck Pond.

Lawrence Creek Trail	4.3 mi.	Moderate
-----------------------------	---------	----------

New entrance. The trail winds through upland woods and ravines. This is an excellent choice for observing fall color. Northern sections of the trail tend to remain wet all summer, providing a wonderful wildflower show.

Schoen Creek Trail	3.3 mi.	Moderate
---------------------------	---------	----------

Begin at the Schoen Creek Trailhead east of the saddle barn. Follow the trail through wetlands, prairie grasses, woods and ravines.



TRUE TALES

- **HISTORIC FEATURE:** Fort Harrison State Park Inn is the former Post Hospital and was constructed in 1908.
- **MIGRATION SPECIES:** Fort Harrison is an important migration spot for a multitude of different warbler and forest-dependent bird species.
- **INTERESTING HISTORY:** During WWII, a Prisoner of War (POW) camp was located in what is now Fort Harrison State Park. It housed German and Italian soldiers captured during the war.

PLEASE STAY ON MARKED TRAILS.



Memories made naturally.
INDIANA STATE PARKS

DISCOVER • CHALLENGE • EXPLORE

HOOSIER QUEST-Pin & Patch Program

Each state park offers you the opportunity to complete tasks to earn a patch or property pin.

on.IN.gov/hoosierquest

BOOK YOUR STAY • RESERVE TODAY

GET OUT and GO CAMPING

Call or go online to make your reservation for all types of

- Camping
- Family Cabins
- Shelters

Includes state parks, reservoirs and forests.

1-866-6campIN
(1-866-622-6746)

camp.IN.gov

STAY IN at a STATE PARK INN

Call or go online to make your reservation for a(n)

- State Park Inn
- Inns-managed Cabin

Seven State Parks include Inns: Brown County, Clifty Falls, Fort Harrison, McCormick's Creek, Spring Mill, Turkey Run and Pokagon.

1-877-lodges1
(1-877-563-4371)

IndianalInns.com



For a full list of events, visit interpretiveservices.IN.gov



Please carry out all trash you produce to help keep the property clean and beautiful for all to enjoy!

FOLLOW US



OUTDOOR INDIANA Subscribe to Outdoor Indiana magazine today, Visit OutdoorIndiana.org or call 317-233-3046.

The programs, services, facilities, and activities of the Indiana Department of Natural Resources are available to everyone. DNR prohibits discrimination on the basis of race, color, national origin, age, sex, or disability. If you believe that you have been discriminated against in any program, activity, or facility as described above, or if you desire further information please write to: Department of Natural Resources, Executive Office, 402 W. Washington Street, W256, Indianapolis, IN 46204, (317) 232-4020.

© 06/2025 Indiana Department of Natural Resources

DNR
Indiana Department
of Natural Resources

FORT HARRISON STATE PARK



Fort Harrison State Park
5753 Glenn Road
Indianapolis, IN 46216

(317) 591-0904

on.IN.gov/fortharrisonsp

fortharrisonsp@dnr.IN.gov

on.IN.gov/stateparks