

SUMMIT LAKE STATE PARK

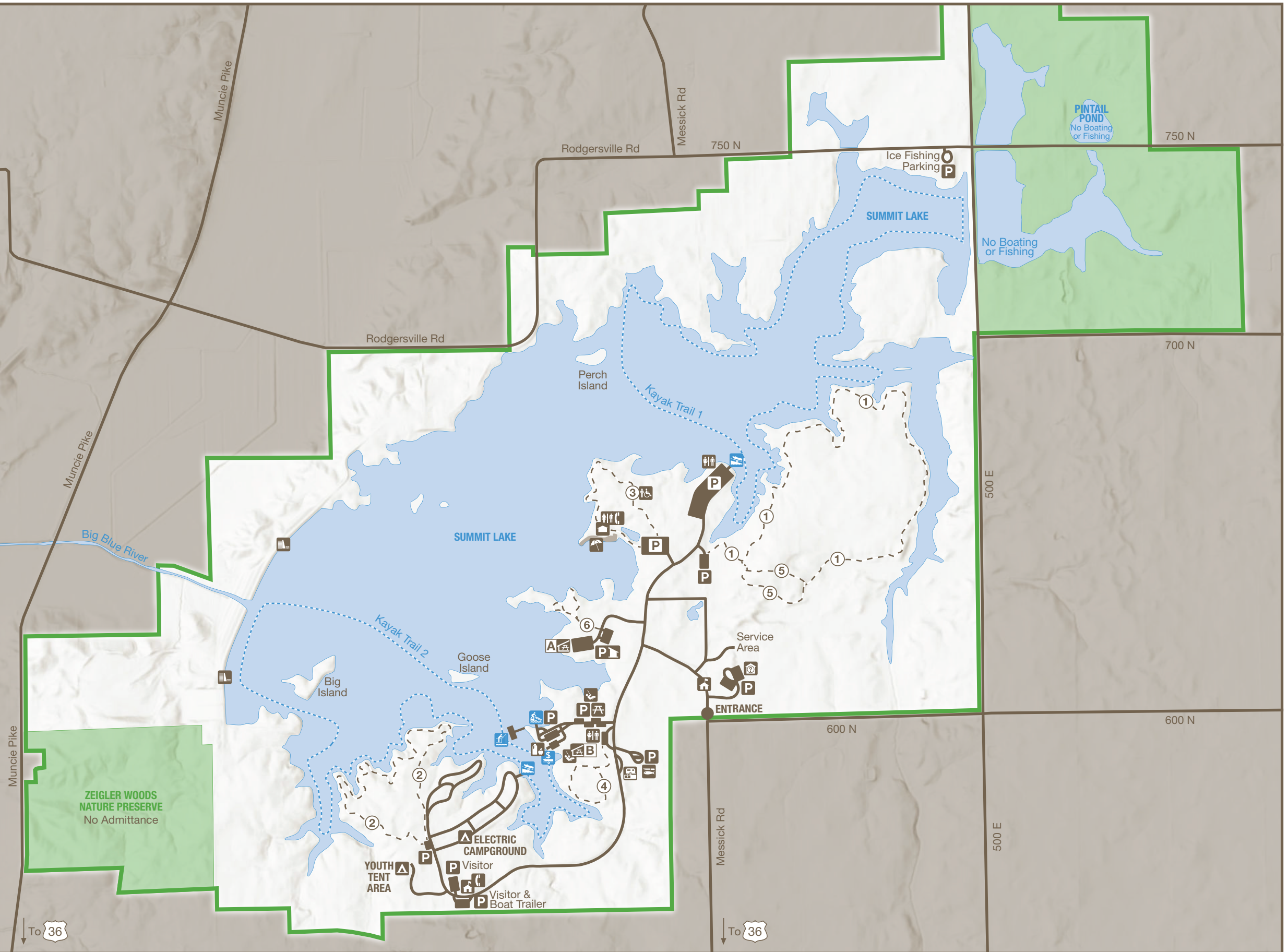
5993 N. Messick Road | New Castle, IN 47362 | 765-766-5873
2,680 Acres | Established 1988

LEGEND			
	Property Boundary		Dam
	Private Property		Playground
	Water		Nature Center
	Nature Preserve		Campstore
	Road		Picnic Area
	Hiking Trail		Telephone
	Kayak Trail		Beach House
	Trail Intersection		Beach
	Gatehouse		Fishing Cleaning Stn.
	Parking		Dump Station
	Picnic Shelter		Fishing Pier
	Campground		Boat Launch
	Restroom		Boat Rental
	Vault Toilet		Small Boat Launch
	Property Office		

TRAIL INFO			
TRAIL	TRAIL NAME	MILES	TRAIL TYPE
1	Prairie	1.75	Moderate
2	Campground	1.25	Moderate
3	Beach	0.9	Accessible
4	Self-guided	0.75	Moderate
5	Upland Forest	1.25	Moderate
6	Sunset	0.5	Easy

SHELTERS	
A	Sunset
B	Harvey

SCALE & COMPASS		
0	0.25	0.5
In Miles, 1:17,000		
Sources: IDNR, Esri, NASA, NGA, USGS, FEMA		





THE PARK STORY

Summit Lake's story is one of preserving and restoring healthy ecosystems.

Its ice age topography was created more than 12,000 years ago as glaciers carried rocks and soil from Canada across central Indiana. After receding, they left behind low hills of glacial debris and streams formed by rushing meltwater.

Forests with patches of prairie and wet prairie covered the landscape. Dry upland forests included a variety of oak stands interspersed with open, grassy areas. Low areas contained wet woods with silver maple, hackberry, and other moisture-loving trees. Black bears, wolves, and elk were abundant.

The region has attracted people for thousands of years. Prehistoric mounds and fortifications are found in Henry County. The Myaamia (Miami) and Lenape (Delaware) settled here. The Treaty of 1818 forced their removal and opened the area to European settlement. Forests were cleared, and farms began to dot the landscape, most growing corn. Bears, wolves, and elk were hunted and disappeared.

During the 1950s, Henry County residents began to talk about having a local recreational area. By 1966, the Big Blue River Conservancy District, whose plans also included controlling flooding from the Big Blue River, started to make that dream a reality.

Construction of the dam began in the mid-1970s. When its gates closed in 1980, Summit Lake began to fill. In 1988, the Big Blue River Recreation Area was sold to the State and became Summit Lake State Park.

Today, the 800-acre lake provides wildlife habitat and recreational opportunities for birdwatching, fishing, and boating. Wetland and prairie restoration enhances the park's native ecosystems.

Whether you visit to swim, hike, birdwatch, camp, or fish, Summit Lake has something for you.



RULES & REGULATIONS

- Please obey all property rules & regulations.

on.IN.gov/INStateParksRules



ACTIVITIES & FACILITIES

- Look for these icons on the map.

BOAT LAUNCH: Privately owned boats may be launched. Launch permit required. Electric trolling motors, powered by no more than two 12-volt batteries, allowed. Outboard motors are permitted to operate at idle speed only.

BOAT RENTAL: Rowboats, kayaks and canoes are available by the hour.

CAMPING: All sites are electric. Flush toilets, hot water and showers. Occupancy limited to 14 consecutive nights. Sites will accommodate trailers. Make reservations at Camp.IN.gov.

CONCESSIONS: Located at the beach.

FISHING: Fishing is allowed away from the beach area. State fishing license required. No fishing at the dam or on the beach when ropes are in place.

HIKING: Easy-to-moderate marked trails are available for hiking all year.

INTERPRETIVE NATURALIST SERVICE: A seasonal naturalist is available from mid-May through Labor Day. Naturalist programming offered includes the Hoosier Quest outdoor adventure program. Additionally, cultural arts activities are scheduled for many summer weekends. For program info, call (765) 766-5873 or visit interpretiveservices.IN.gov.

PICNIC AREAS: Tables, grills, restrooms and playground are available.

SHELTERHOUSE: Harvey and Sunset shelters are available. Make reservations at Camp.IN.gov.

SWIMMING: Swimming is permitted sunup to sundown, Memorial Day weekend to Labor Day. There is no charge for swimming. The beach house and beach open the Saturday before Memorial Day and operate no later than Labor Day.



TRAIL CHALLENGE

- Try one of our challenges and earn merchandise to purchase. Participate in the 2 Kayak Trail Challenge at Summit Lake State Park. Visit the website and select your park of choice to learn more.

on.IN.gov/parks-challenges



HIKING TRAILS

- For safety, please stay on marked trails.
- Bicycles prohibited on hiking trails.

TRAIL & DESCRIPTION	DISTANCE	DIFFICULTY
1. Prairie Trail	1.75 mi.	Moderate

Traverses open, rolling prairie with lake views. The prairie is comprised of Indiana Grass, cream wild indigo, shooting star, rattlesnake master and several other natural grasses and forbs.

2. Campground Trail	1.25 mi.	Moderate
----------------------------	----------	----------

Starts in the small oak-hickory woods, with a glacial depression that stays wet year-round. The trail then goes through some scrub growth on the edge of the fields, then into open fields across rolling terrain, with excellent views of the lake.

3. Beach Trail	0.9 mi.	Easy
-----------------------	---------	------

Accessible. Trail has a firm and stable surface with less than 2% cross-slopes, grades no greater than 5% and widths of 60 inches. Begins in a small wooded lot then is mostly open, with views of the lake across rolling topography.

4. Self-Guided Nature Trail	0.75 mi.	Moderate
------------------------------------	----------	----------

Begins in a prairie grass field punctuated with the bright colors of wildflowers in the summer. It winds through a meadow with young tulip trees, second-growth shrubs and a wetland with a boardwalk. The trail ends with a scenic view of the lake where waterfowl, swallows and other water-loving birds may be seen.

5. Mesic Upland Forest Trail	1.25 mi.	Moderate
-------------------------------------	----------	----------

Starts in the open but enters the largest wooded lot in the park, with a mix of oak-hickory, cherry, ash and beech-maple trees. The topography includes uplands and low glacial depressions. The trail coincides with trail 1-Prairie Trail with views of Indiana native wildflowers and grasses.

6. Sunset Trail	0.5 mi.	Easy
------------------------	---------	------

This partially shaded trail leads visitors through shrub swamp to beautiful views of the lake. Hikers may see the Tricolored Heron, Osprey, Eagles or White Pelicans.

Memories made naturally.
INDIANA STATE PARKS

DISCOVER • CHALLENGE • EXPLORE

HOOSIER QUEST-Pin & Patch Program

Each state park offers you the opportunity to complete tasks to earn a patch or property pin.

on.IN.gov/hoosierquest

BOOK YOUR STAY • RESERVE TODAY

GET OUT and GO CAMPING

Call or go online to make your reservation for all types of

- Camping
- Family Cabins
- Shelters

Includes state parks, reservoirs and forests.

1-866-6campIN
(1-866-622-6746)

camp.IN.gov

STAY IN at a STATE PARK INN

Call or go online to make your reservation for a(n)

- State Park Inn
- Inns-managed Cabin

Seven State Parks include Inns: Brown County, Clifty Falls, Fort Harrison, McCormick's Creek, Spring Mill, Turkey Run and Pokagon.

1-877-lodges1
(1-877-563-4371)

IndianalInns.com



For a full list of events, visit interpretiveservices.IN.gov



Please carry out all trash you produce to help keep the property clean and beautiful for all to enjoy!



FOLLOW US



OUTDOOR INDIANA Subscribe to Outdoor Indiana magazine today, Visit OutdoorIndiana.org or call 317-233-3046.

The programs, services, facilities, and activities of the Indiana Department of Natural Resources are available to everyone. DNR prohibits discrimination on the basis of race, color, national origin, age, sex, or disability. If you believe that you have been discriminated against in any program, activity, or facility as described above, or if you desire further information please write to: Department of Natural Resources, Executive Office, 402 W. Washington Street, W256, Indianapolis, IN 46204, (317) 232-4020.



KAYAK TRAILS

- See the Trail Challenge information.

TRAIL & DESCRIPTION	DISTANCE	DIFFICULTY
Kayak Trail 1	3.25 mi.	Moderate

From the north loop kayak launch, this self-guided scenic route starts by following a small cove where great blue herons wade. Other focal points may include lotus blossoms and white pelican and double-crested cormorant roosting areas.

Kayak Trail 2	3.25 mi.	Moderate
----------------------	----------	----------

From the south ramp kayak launch or boat rental, this self-guided route goes by inner coves where wading birds, migratory waterfowl, and black vultures roost, as well as an osprey nest.



DNR PROPERTIES NEARBY

- Find more DNR properties at on.IN.gov/recfinder.

WILBUR WRIGHT FISH & WILDLIFE AREA

dog training areas, fishing, hunting, target ranges, trapping, wildlife watching

MOUNDS STATE PARK

camping, fishing, hiking trails, interpretive services & center, historic features, picnic area, play/sports area, shelter house, swimming pool, youth tent areas



TRUE TALES

- **ARCHAEOLOGY FEATURE:** In 1888, a complete mastodon skeleton was discovered in a nearby bog. The skeleton was reconstructed and is on display at Earlham College in Richmond.
- **INTERESTING FEATURE:** The name Summit Lake comes from being located at the highest elevation in the surrounding area at almost 6,700 feet.
- **FOREST FEATURE:** The Zeigler Woods Nature Preserve contains a rare example of Indiana's pre-settlement upland forest community.

DNR
Indiana Department
of Natural Resources

SUMMIT LAKE STATE PARK



Summit Lake State Park
5993 N. Messick Rd.
New Castle, IN 47362

(765) 766-5873

on.IN.gov/summitlakesp

summitlakesp@dnr.IN.gov

on.IN.gov/stateparks