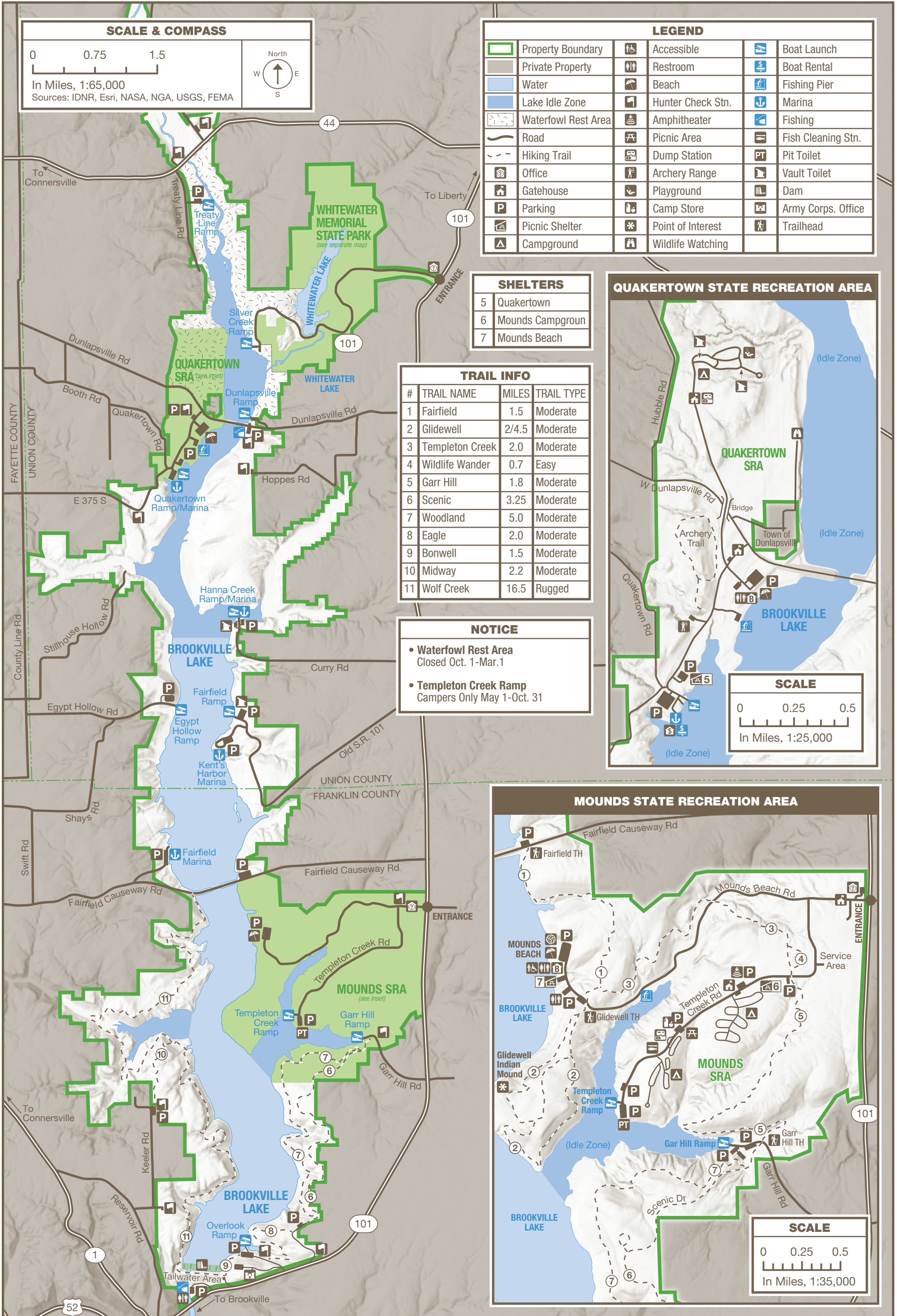


# BROOKVILLE LAKE

WITH QUAKERTOWN SRA & MOUNDS SRA

14108 State Road 101 | Brookville, IN 47012 | 765-647-2657 | 11,185 Acres & 5,260 Acre Lake | Established 1975





**OUR STORY**

Brookville Lake's landscape, natural history, and heritage are defined by the Whitewater River and its valley.

Tens of millions of years ago, the Brookville region was covered by a shallow, warm ocean teeming with shelled animals. More recently, the Wisconsin glacial stage halted its advance north of this area. The glacial ice melted, sending volumes of water across the landscape, carving the river's path.

The Brookville area was one of the first in Indiana settled by Europeans. Settlers entered from Ohio and Kentucky. Farms began to appear along the river as early as 1804. The towns of Brookville and Fairfield provided farmers with services such as a sawmill, gristmill, general store, tavern, and church.

The White River Valley was also the frequent scene of flooding. Its steep hills and many tributaries created conditions for rapidly rising water. Homes, bridges, roadways, and cropland were devastated. After a severe flood in 1937, discussion of a dam began.

In 1965, ground was broken for the Brookville Dam. Constructed by the U.S. Army Corps of Engineers, it created Brookville Lake to hold floodwaters, protecting the town of Brookville and downstream communities. The reservoir also serves as a water supply and provides water recreation.

Today, much of the agricultural land has been restored to wildlife habitat. Brookville Lake supports wetlands for more than 20 species of migratory waterfowl, sandhill cranes, and even white pelicans. The habitat management program includes wildlife food plots for white-tailed deer, wild turkey, and mourning doves. Beaches, boat ramps, campgrounds, hiking trails, coves for fishing, and wildlife to observe combine to make this 16-mile-long lake a great place to visit.



**RULES & REGULATIONS**

- Please obey all property rules & regulations.

[on.IN.gov/INStateParksRules](http://on.IN.gov/INStateParksRules)



**ACTIVITIES & FACILITIES**

- Look for these icons on the map.

**ARCHERY RANGE:** 3D archery range located in Quakertown SRA. Open to all ages. The course changes every week. Target sizes range from small (javelina) to large (elk) and everything in between.

**BEACH:** Swimming available at Mounds SRA, Quakertown SRA and Whitewater SP during open hours Memorial Day through Labor Day. Modern bathhouses available.

**BOAT LAUNCH:** 10 boat launches. Ramps range from one-lane for smaller fishing boats to large for almost any pleasure boat. All ramps have picnicking and toilet facilities.

**BOATING:** Unlimited horsepower, large areas of idle zone. Run-about and pontoon rentals available through private concessionaire.

**CAMPING:** Potable water and dump stations available. Non-electric, youth and non-electric horseman's camping at Whitewater SP. Full hookup sites (electric, water and sewage) at Mounds SRA. Occupancy limited to 14 consecutive nights. Reserve at [camp.IN.gov](http://camp.IN.gov).

**FISHING:** Walleye, muskellunge, striped bass, smallmouth bass, largemouth bass, bluegill, crappie, and catfish. State fishing license required.

**HIKING:** More than 50 miles of hiking trails ranging from easy to rugged.

**HUNTING:** Upland game and waterfowl available. Indiana hunting license required.

**MARINAS:**

- **Fairfield**-seasonal mooring with buoys and slips, on-water fuel and ice.
- **Hanna Creek**-76 slips for sailboats only.
- **Quakertown**-seasonal mooring with buoys and slips, on-water fuel, ship store, boat pump-out and boat rental.
- **Kent's Harbor**-seasonal mooring, on-water fuel, ship store, boat rental and restaurant.

**FAMILY CABINS:** Available year-round at Whitewater SP. Guests furnish linens. Renter must clean and leave ready for next occupants. Three cabins are accessible. Two cabins allow pets. All are non-smoking. Maximum six persons per cabin. Occupancy limited to 14 consecutive nights. Must be age 21 to rent. Make reservations at [camp.IN.gov](http://camp.IN.gov).

**PICNIC AREAS:** Tables and toilet facilities. Reserve at [camp.IN.gov](http://camp.IN.gov).



**HIKING TRAILS**

- For safety, please stay on marked trails.
- Bicycles prohibited on most hiking trails.

TRAIL & DESCRIPTION	DISTANCE	DIFFICULTY
<b>1-Fairfield</b> Extends from southwest end of Fairfield Causeway to Mounds Beach Road, traveling by lakeshore through old pine plantation and crop fields.	1.5 mi.	Moderate
<b>2-Glidewell</b> Has a long loop (4.5 miles) and short loop (2 miles) past a 2,000-year-old Native American mound.	2/4.5 mi.	Moderate
<b>3-Templeton Creek</b> Parallels Mounds Beach Road then crosses Templeton Creek and up to Wildlife Wander Trail.	2.0 mi.	Moderate
<b>4-Wildlife Wander</b> Self-guided short loop through mature woods. Brochures available by trail sign.	0.7 mi.	Easy
<b>5-Garr Hill</b> Goes through crop fields and woods to the Garr Hill Boat Ramp.	1.8 mi.	Moderate
<b>6-Scenic</b> Great for bicycle riding and rollerblading. Goes from Garr Hill to Scenic Vista.	3.25 mi.	Moderate
<b>7-Woodland</b> Wooded alternative parallel to paved Scenic Trail.	5.0 mi.	Moderate
<b>8-Eagle</b> Travels through beautiful mature woods to Bonwell Ramp road. To continue on Bonwell Trail, cross road and walk to far corner of parking lot.	2.0 mi.	Moderate
<b>9-Bonwell</b> Connects Bonwell to top of dam. To continue Adena Loop, cross the dam to Wolf Creek Trail.	1.5 mi.	Moderate
<b>10-Midway</b> Easy access to Wolf Creek Trail. Access trailhead at small parking lot at end of Keeler Road.	2.2 mi.	Moderate
<b>11-Wolf Creek</b> Primitive trail traversing hills and ravines on west side of Brookville Lake, crossing no public roads or buildings. Ends at Fairfield Causeway. Beautiful lake views in spring and fall. To pick up Fairfield Trail, continue back to east side.	16.5 mi.	Rugged

Memories made naturally.  
INDIANA STATE PARKS

**DISCOVER • CHALLENGE • EXPLORE**

**HOOSIER QUEST-Pin & Patch Program**

Each state park offers you the opportunity to complete tasks to earn a patch or property pin.

[on.IN.gov/hoosierquest](http://on.IN.gov/hoosierquest)

**BOOK YOUR STAY • RESERVE TODAY**

**GET OUT and GO CAMPING**

Call or go online to make your reservation for all types of

- Camping
- Family Cabins
- Shelters

Includes state parks, reservoirs and forests.

1-866-6campIN (1-866-622-6746)

[camp.IN.gov](http://camp.IN.gov)

**STAY IN at a STATE PARK INN**

Call or go online to make your reservation for a(n)

- State Park Inn
- Inns-managed Cabin

Seven State Parks include Inns: Brown County, Clifty Falls, Fort Harrison, McCormick's Creek, Spring Mill, Turkey Run and Pokagon.

1-877-lodges1 (1-877-563-4371)

[IndianalInns.com](http://IndianalInns.com)

For a full list of events, visit [interpretiveservices.IN.gov](http://interpretiveservices.IN.gov)



Please carry out all trash you produce to help keep the property clean and beautiful for all to enjoy!

**FOLLOW US**



OUTDOOR INDIANA Subscribe to Outdoor Indiana magazine today, Visit [OutdoorIndiana.org](http://OutdoorIndiana.org) or call 317-233-3046.

The programs, services, facilities, and activities of the Indiana Department of Natural Resources are available to everyone. DNR prohibits discrimination on the basis of race, color, national origin, age, sex, or disability. If you believe that you have been discriminated against in any program, activity, or facility as described above, or if you desire further information please write to: Department of Natural Resources, Executive Office, 402 W. Washington Street, W256, Indianapolis, IN 46204, (317) 232-4020.



**DNR PROPERTIES NEARBY**

- Find more DNR properties at [on.IN.gov/recfinder](http://on.IN.gov/recfinder).

**SHRADER-WEAVER NATURE PRESERVE**

hiking, parking, wildlife watching

**VERSAILLES STATE PARK & BRADT NATURAL AREA**

mnt. biking, bridle trails, hiking, parking, wildlife watching, interpretive services, nature center, playground, historic features, fishing, shelterhouses, swimming, boating, camping



**IMPORTANT INFORMATION**

**GPS ADDRESSES:**

**QUAKERTOWN SRA** – 3323 W. Dunlapsville Rd  
Liberty, IN 47353

**MOUNDS SRA** – 14108 State Road 101  
Brookville, IN 47012



**TRUE TALES**

- **INTERESTING EARTHWORKS:** The Glidewell Mound was a burial mound. Excavations in the 1800s revealed human skeletons and artifacts from the 2,000-year-old Adena culture.
- **INTERESTING PALEONTOLOGY:** Fossils found at Brookville Lake are the hard shells, exoskeletons, or colonial structures of animals who lived here tens of millions of years ago.
- **LAKE DEPTH:** Brookville Lake's maximum depth is 130 feet. Its average depth is 30 feet.



**BROOKVILLE LAKE**



Brookville Lake  
14108 State Road 101  
Brookville, IN 47012

(765) 647-2657

[on.IN.gov/brookvillelake](http://on.IN.gov/brookvillelake)

[brookvillelake@dnr.IN.gov](mailto:brookvillelake@dnr.IN.gov)

[on.IN.gov/stateparks](http://on.IN.gov/stateparks)