

CORNER 21-A TOWNSHIP 6 SOUTH RANGE 3 EAST 2 ND PRINCIPAL MERIDIA 21-A

LOCATION	DESCRIPTION OF		DISTANCE FROM CORNER	BEARING FROM CORNER	DATE CHECKED	CHECKED BY	FIELD BOOK	REMARKS
	MONUMENT	REFERENCE						
N.E. Corner Sec. 2	Stone #5 Re-Bar	S.E. Cor. S35-5-3	190.74	West	3-22-83	T.B.	#2 Pg. 19	Sign Place

Not book 2
Page 19

Called out Stone
Small space in
Book 2 [Page 20]
21Y with info on
T5R3 sec 35

Book 2 Page 20 - 21Y
States on End of Page
T6R3 Sec 2 -
Has a Stake
NE Corner

✓ This is the Stone Called
T6R3
This is for Sec 2

ZGEN NO. 385-2

21-A

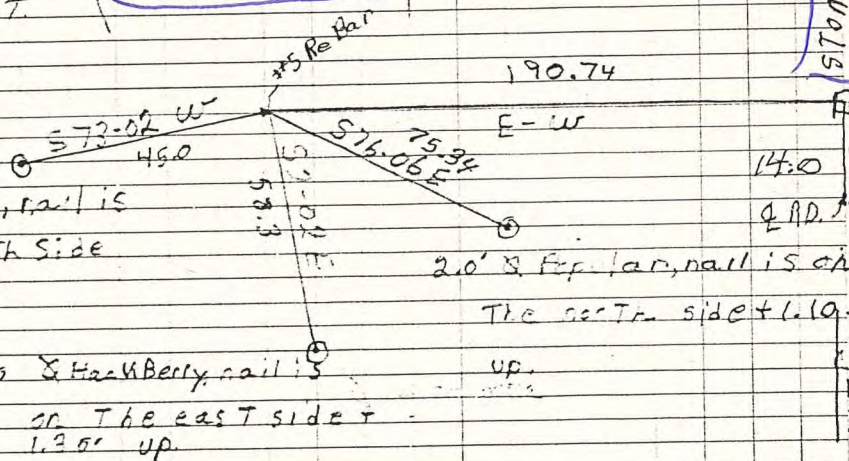
All trees have a blaze with a aluminum nail in middle. All trees have a witness sign & a blue ring around it.

sect. cor. 15
set with a #5
Rebar

Date 3-22-83
Party Chief T. Brown
Head Chain M. Mosses
Rear Chain F. Clements

S.E. cor. sect. 35
T55 R3E

Stone marked with
post # 5191
(N.T. cor. sect. 2, T45, R1E)



Page 19
Page 20