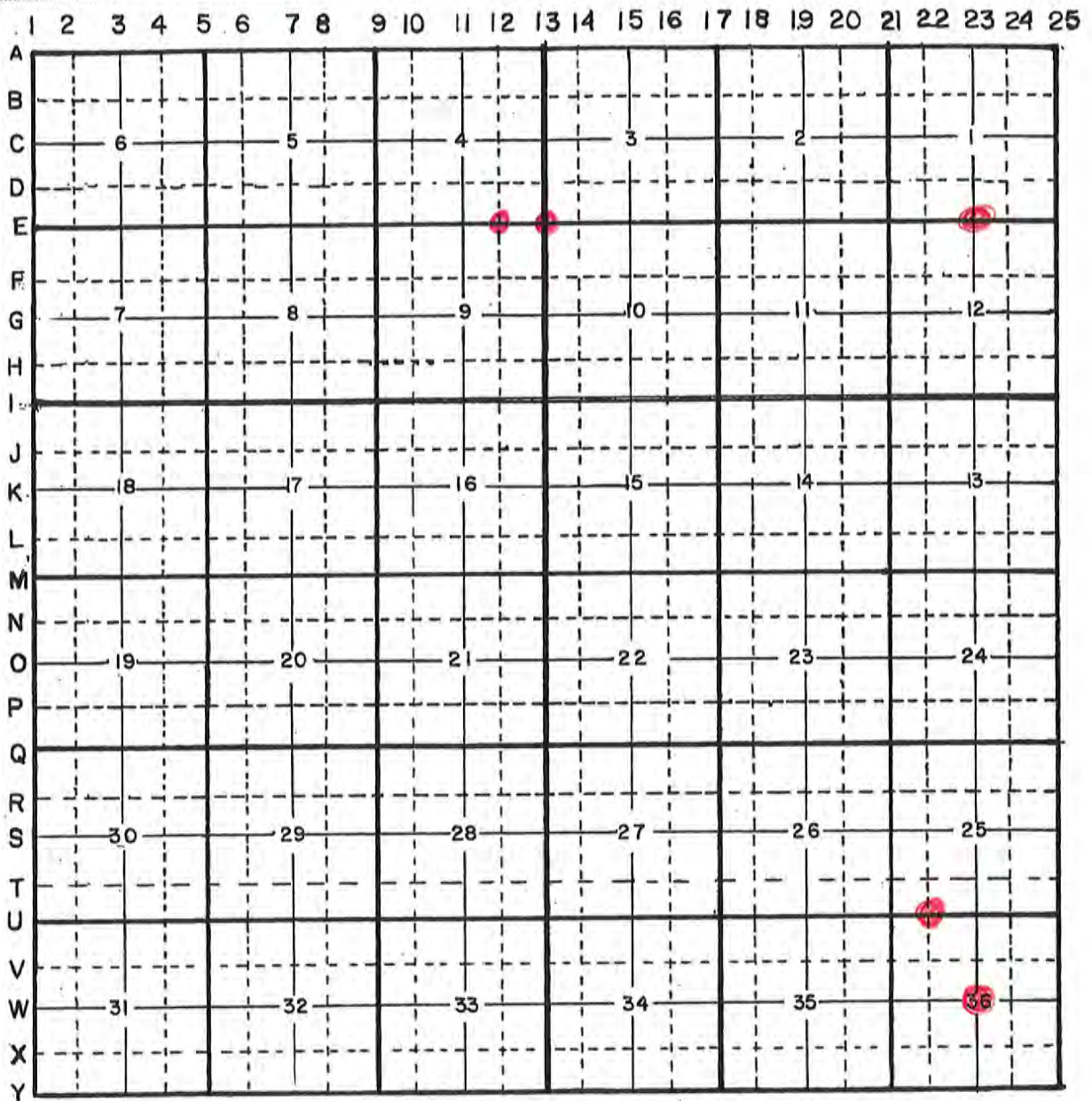


HARRISON COUNTY CORNER REFERENCE

TOWNSHIP 4 SOUTH RANGE 2 EAST



HARRISON COUNTY

CORNER

12-E

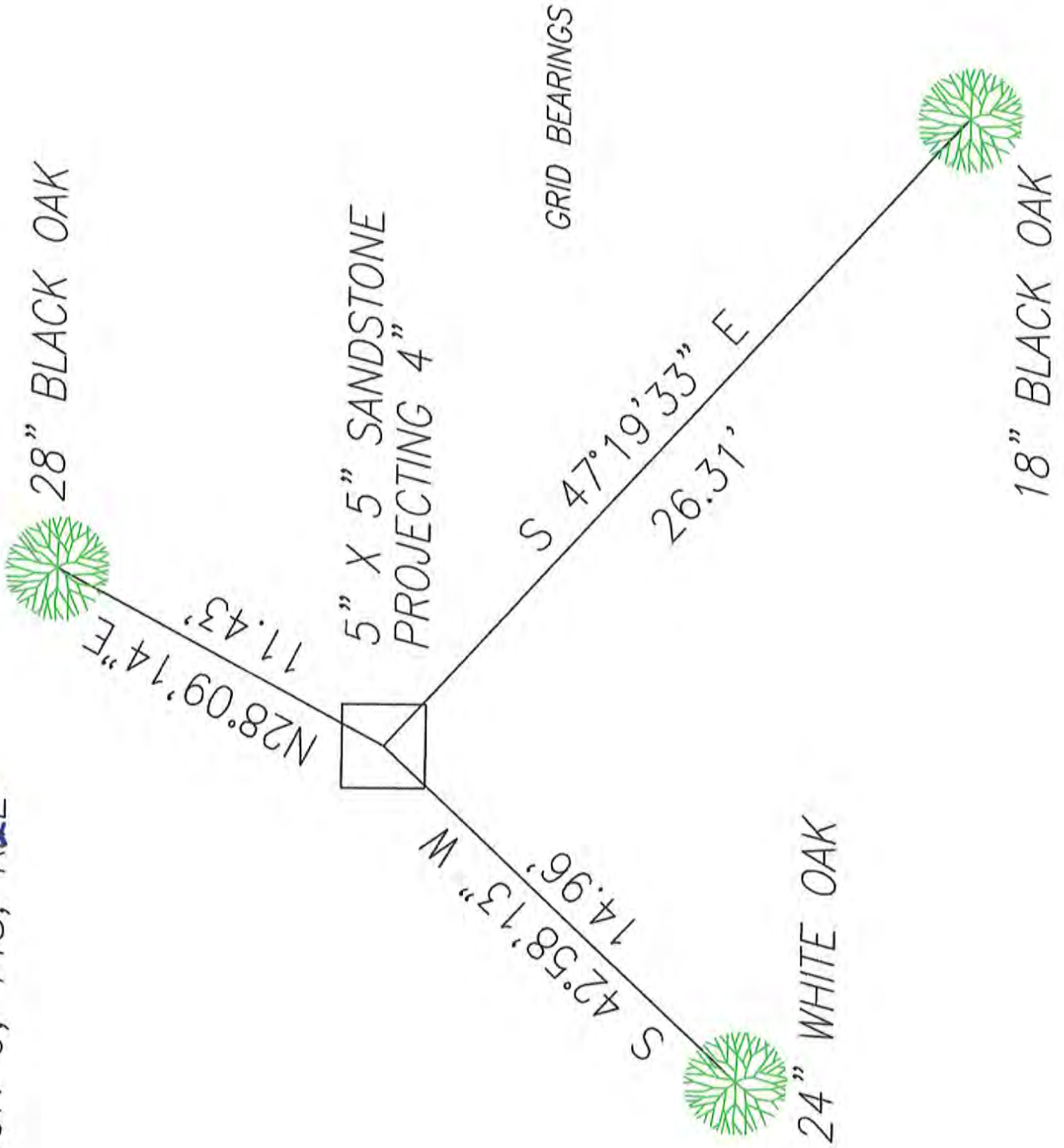
12-E

TOWNSHIP 4 RANGE 2 EAST 2ND PRINCIPAL MERIDIAN

LOCATION	DESCRIPTION OF		DISTANCE FROM CORNER	BEARING FROM CORNER	DATE CHECKED	CHECKED BY	FIELD BOOK	REMARKS
	MONUMENT	REFERENCE						
E1/16 Corner Sec. 9	Sandstone 5x5x4	24" W. Oak	14.96'	S42-58-13W	11/09	TOB	6/62	
		28" B. Oak	11.43'	N28-09-4E				
		18" B. Oak	26.31'	S47-19-33E				

12-E

NW CORNER OF NE QUARTER
SECTION 9, T4S, R1E



HARRISON

COUNTY

13-E

CORNER 13-E

TOWNSHIP 4

RANGE 2

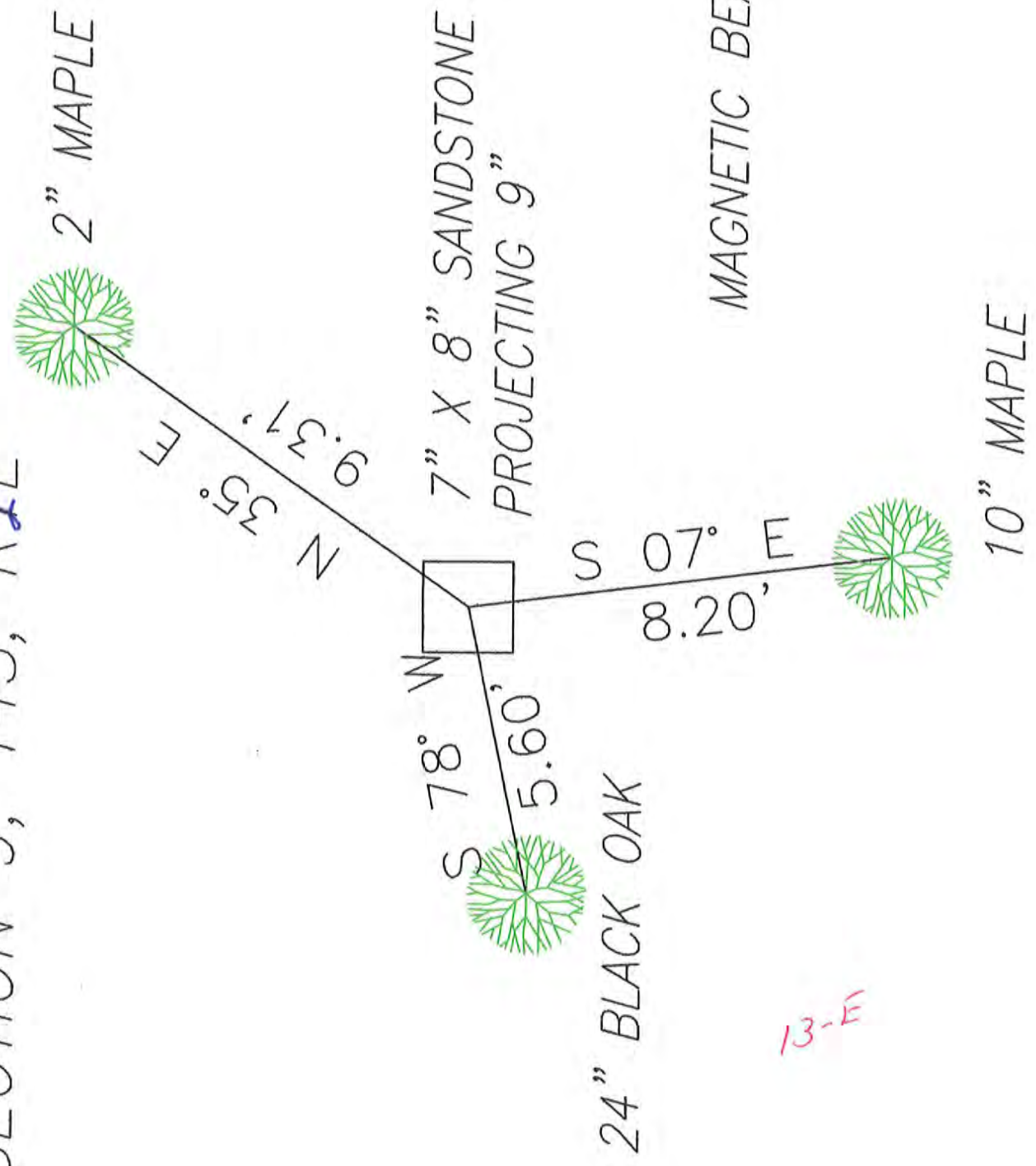
EAST 2ND

PRINCIPAL MERIDIAN

LOCATION	DESCRIPTION OF		DISTANCE FROM CORNER	BEARING FROM CORNER	DATE CHECKED	CHECKED BY	FIELD BOOK	REMARKS
	MONUMENT	REFERENCE						
NE Corner Sec. 9	7x8 Sandstone	10" Maple APPROX. 100' from horse & hiking trail	8.2'	S 7 E	11/09	TOB	6/61	
		2" Maple Approx. 300' So. of Camp- ing area	9.31'	N 35 E				
		24" B. Oak	5.6'	S 78 W				

13-E

NE CORNER
SECTION 9, T4S, R1E



13-E

HARRISON COUNTY

TOWNSHIP 4 SOUTH

RANGE 2 EAST 2 ND PRINCIPAL MERIDIAN

CORNER 22-U

22-U

LOCATION	DESCRIPTION OF REFERENCE		DISTANCE FROM CORNER	BEARING FROM CORNER	DATE CHECKED	CHECKED BY	FIELD BOOK	REMARKS
	MONUMENT							
N.E. Corner N.W. 1/4 N.W. 1/4, N.W. 1/4 Sec. 36.	Stone	16" Maple	73.53	East	3-26-85	T.B.	#3 Pg.13	Sign Placed
		14" Maple	20.75	S76-33E	3-26-85	T.B.		Sign Placed
		23" Maple	8.50	S40-0E	3-26-85	T.B.		Sign Placed

57

All Trees have a blaze with a aluminum nail in middle.
All Trees have a witness sign.

NORTH

STONE IS 0.6020 0.80
STONE IS MARKED WITH A METAL POST + SIGN

Party Chief T. Brown

Rear Chain M. Riley

Head Chain A. Clements

Stone

EAST 73.53

1.30 Ø maple, nail is on south side
1.60 up.

576-33E

20.75

1.20 Ø maple, nail is on north side
1.90 up.

510-00E

1.50

1.90 Ø maple, nail is on east side
1.80 up.

Date 3-26-85

NE Corner, NW 1/4, NW 1/4, NW 1/4

Sec T36, T4S, R2E

22-U

22-U

23-E

HARRISON

COUNTY

CORNER 23-E TOWNSHIP 4 SOUTH RANGE 2 EAST 2 ND PRINCIPAL MERIDIAN

LOCATION	DESCRIPTION OF		DISTANCE FROM CORNER	BEARING FROM CORNER	DATE CHECKED	CHECKED BY	FIELD BOOK	REMARKS
	MONUMENT	REFERENCE						
S.W. Corner S.E. 1/4 Section 1	Stone	15" White Oak	8.12	S29-36-0E	1-3-83	T.B.	#2 Pg.17	Sign Placed
		13" White Oak	24.05	S28-47-0W	1-3-83	T.B.		Sign Placed
		6" Ash	16.85	N71-02-0W	1-3-83	T.B.		Sign Placed

TRIZGEN NO. 3EE-3

23-E

NORTH

Stone is 0.4 x 0.4 x 0.4
out of ground. Stone
has X in top. Stone is
marked with a metal
post & sign on the west
side.

0.50' S FSK nail 1.40' up
for the South side

N 71-02-0W
16.85'

All trees have a blaze with
a alum. nail in middle. All
trees have a witness sign &
a red ring around tree
above sign.

S 28-47-0W
4.05'

S 29-36-0E
8.12'

1.10' white oak, nail 1.20' up
for the EAST side

1.30' white oak, nail
1.20' up, on the west side

Date 1-3-83

P.C. T. Brown

S. W. Corner, SE 1/4, sect 1

H.C. D. Neal

T 9 S, R 2 E

P.C. A. Clemmets

23-E

PAGE 12

HARRISON COUNTY

RANGE 12 EAST 2 ND PRINCIPAL MERIDIAN

23-W

TOWNSHIP 4 SOUTH

CORNER 23-W

LOCATION	DESCRIPTION OF MONUMENT		DISTANCE FROM CORNER	BEARING FROM CORNER	DATE CHECKED	CHECKED BY	FIELD BOOK	REMARKS
	MONUMENT	REFERENCE						
S.E. Corner, N.W. 1/4 Section 36	Stone	84" Sycamore	28.73	N9-34-10E	3-22-85	T.B.	#3 Pg.14	Sign Placed
		24" Oak	35.79	N33-21-0E	3-22-85	T.B.		Sign Placed
		Beech	23.51	South	3-22-85	T.B.		Sign Placed

All Trees have a blaze
with a aluminum nail in
middle.
All Trees have a witness
sign.

Party Chief T. Brown

Head Chain A. Clements

Rear Chain M. Riley

Date 3-22-85

S.E. corner, NW 1/4

Section 36, T4S, R2E

SOUTH
23.51

