

7-Q



8 1 8 8 7 9 9
Tx:4014226

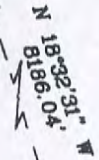
INST# 201206846

BARBARA BEST
HARRISON COUNTY RECORDER
12/20/2012 3:14 PM
PAGE 1 OF 4

FOR RECORDING INFORMATION

SECTION 20,
TOWNSHIP 3 SOUTH, RANGE 5 EAST,
FRANKLIN TOWNSHIP,
HARRISON COUNTY, INDIANA

INDOT
S28



SEC. 18

SEC. 17

N 89°27'03" W

7

N 89°27'03" W

SEC. 17

9

SEC. 18

SEC. 19

SEC. 20

2638.84'

N 89°27'03" W
5334.26'

2695.82'

SEC. 20

SEC. 21

SEC. 18

N 0°13'24" E
2648.55'

2661.10'

N 0°23'31" E

N 0°13'24" E
5320.33'

O

N 0°13'24" E
2670.78'

2668.33'

N 0°31'48" E

N 0°27'40" E
5329.42'

SEC. 19 | SEC. 20

Q

SEC. 30

SEC. 29

2645.06'

N 89°22'08" W

N 89°21'07" W
5312.20'

1334.55'

N 89°20'08" W

1332.59'

N 89°20'09" W

SEC. 20

SEC. 21

SEC. 29

SEC. 28

SURVEYOR'S CERTIFICATE

I, VICTOR H. McCAULEY, PROFESSIONAL LAND SURVEYOR, REGISTERED BY THE LAWS OF THE STATE OF INDIANA, HEREBY DECLARE THAT I HAVE RECOVERED, RESTORED AND PERPETUATED THE CORNERS SHOWN HEREON IN SECTION 20, TOWNSHIP 3, SOUTH, RANGE 5 EAST, FRANKLIN TOWNSHIP, HARRISON COUNTY, INDIANA IN ACCORDANCE WITH IAC TITLE 866, THE RULES FOR SURVEYS OF PUBLIC LANDS AND THE STATUTES OF THE STATE OF INDIANA, ALL TO THE BEST OF MY KNOWLEDGE AND BELIEF.

Victor H. McCauley

VICTOR H. McCAULEY, INDIANA LS# 50336

DATE OF SURVEY: NOV. 30, 2012



NORTH

LEGEND

- HISTORICAL STONE (SEE REPORT)
- EXISTING PIPE (SEE REPORT)
- ⊠ EXISTING STEEL PIN W/CAP (SEE REPORT)
- STEEL PIN W/3/4" ALUM. DISC STAMPED TO DEPICT CORNER POSITION (SEE REPORT)
- EXISTING STEEL PIN (SEE REPORT)
- ◆ INDOT 333 N: 1098881.16 E: 231897.40
- Ⓜ HARRISON COUNTY REFERENCE

Q-4

**PLAT OF SURVEY
2012 HARRISON COUNTY PERPETUATION PROJECT**

SITUATED IN SECTION 20, TOWNSHIP 3 SOUTH, RANGE 5 EAST, FRANKLIN TOWNSHIP, HARRISON, INDIANA.

CORNERS MONUMENTED AND PERPETUATED CONTINUED

M-9 SECTION CORNER TO SECTIONS 16, 17, 20 & 21, T-3-S, R-5-E

RECOVERED ROUNDED SANDSTONE WITH A "+" CUT ON TOP, FLUSH WITH THE GROUND. THE STONE HAS A YELLOW HCSS, 0.5' WEST. THE STONE IS IN LANESVILLE CEMETERY. THE MONUMENT WAS LEFT IN PLACE AS RECOVERED. THIS CORNER HAS A LONG LINAGE AND HAS BEEN USED BY LOCAL SURVEYORS AS THE SECTION CORNER. THE POSITION OF THE CORNER IS SUPPORTED BY MEASUREMENTS TO ADJACENT MONUMENTS IN ALL CARDINAL DIRECTIONS AND BY VERY OLD AND DISTINCT CULTURAL FEATURES IN THE VICINITY. CORNER ACCESSORIES ESTABLISHED:

- WEST CORNER MONUMENT BASE, SCHARES, N84°E, 20.65'
- NW CORNER MONUMENT BASE, YEAGER, N2°W, 9.92'
- NW CORNER MONUMENT BASE, D. W. GRESHAM, S1°W, 2.42'

O-5 QUARTER SECTION CORNER TO SECTIONS 19 & 20, T-3-S, R-5-E

RECOVERED #4 STEEL PIN WITH "T" POST ON THE WEST SIDE OF CRANDALL-LANESVILLE ROAD. THE MONUMENT IS 19'± WEST OF A CONCRETE PAVED SIDE DITCH. THE POSITION OF THE CORNER IS SUPPORTED BY MEASUREMENTS TO ADJACENT MONUMENTS IN SECTION 20 AND BY VERY OLD AND DISTINCT CULTURAL FEATURES IN THE VICINITY. SEE SURVEYS RECORDED AS INSTRUMENT #99010594 AND SURVEY BOOK 4, PAGE 94. NO CORNER ACCESSORIES ESTABLISHED THIS SURVEY.

O-9 QUARTER SECTION CORNER TO SECTIONS 20 & 21, T-3-S, R-5-E

RECOVERED LIMESTONE 0.35' BY 0.45', W/LS131 SPC ON NW SIDE AND A YELLOW HCSS, 0.5' EAST. THE MONUMENT WAS LEFT IN PLACE AS RECOVERED. THIS CORNER HAS A LONG LINAGE AND HAS BEEN USED BY LOCAL SURVEYORS AS THE QUARTER CORNER. THE POSITION OF THE CORNER IS SUPPORTED BY MEASUREMENTS TO ADJACENT MONUMENTS IN SECTION 20 AND BY VERY OLD AND DISTINCT CULTURAL FEATURES IN THE VICINITY. CORNER ACCESSORIES ESTABLISHED:

- CHERRY 31", S23°E, 7.65' TO A MAG NAIL 0.5' UP ON W SIDE W/OLD HCSS
- HACKBERRY 4", S82°W, 3.51' TO A MAG NAIL 0.5' UP IN S CROWN ROOT
- FENCE POST, WEST, 2.4' W/HCSS

O-5 SECTION CORNER TO SECTIONS 19, 20, 29 & 30, T-3-S, R-5-E

RECOVERED SANDSTONE, 0.4' BY 0.4' PROJECTING 0.3' WITH A 1" CTP ON THE NORTH SIDE AND A YELLOW HCSS 0.7' SOUTH,, IN AN OLD N-S FENCE LINE ON THE NORTH SIDE OF A WOODS ROAD TO THE EAST. THE MONUMENT WAS LEFT IN PLACE AS RECOVERED AND A CAIRN OF ROCKS WAS PLACED AROUND THE MONUMENT. THIS CORNER HAS A LONG LINAGE AND HAS BEEN USED BY LOCAL SURVEYORS AS THE SECTION CORNER. THE POSITION OF THE CORNER IS SUPPORTED BY MEASUREMENTS TO ADJACENT MONUMENTS IN SECTION 20 AND BY VERY OLD AND DISTINCT CULTURAL FEATURES IN THE VICINITY. SEE SURVEY OF RECORD IN INSTRUMENT #99010594. CORNER ACCESSORIES ESTABLISHED:

- WALNUT 18", N69°W, 68.2' TO BOTTOM NAIL OF AN OLD HCSS
- SUGAR 7", EAST, 5.84' TO A MAG NAIL 0.2' UP ON S SIDE
- FENCE POST, S8°E, 18.72'

O-7 QUARTER SECTION CORNER TO SECTIONS 20 & 29, T-3-S, R-5-E

RECOVERED LIMESTONE 0.5' BY 0.4' PROJECTING 0.4', WITH A #4 0.4' WEST AND AT FENCE "T". FENCE TO WEST-EAST AND NORTH. W/ YELLOW HCSS, 0.5' NORTH. THE MONUMENT WAS LEFT IN PLACE AS RECOVERED. THIS CORNER HAS A LONG LINAGE AND HAS BEEN USED BY LOCAL SURVEYORS AS THE SECTION CORNER. THE POSITION OF THE CORNER IS SUPPORTED BY MEASUREMENTS TO ADJACENT MONUMENTS IN SECTION 20 AND BY VERY OLD AND DISTINCT CULTURAL FEATURES IN THE VICINITY. SEE SURVEY RECORDED IN SURVEY BOOK 3, PAGE 239. CORNER ACCESSORIES ESTABLISHED:

- FENCE CORNER 8", N49°E, 0.7' TO A MAG NAIL 0.2' UP ON NE SIDE
- SUGAR 17", N4°W, 42.05'
- WILLOW 4", S29°W, 8.0'
- NE CORNER METAL CLAD BUILDING, S21°E, 54.5'

O-9 SECTION CORNER TO SECTIONS 20, 21, 28 & 29, T-3-S, R-5-E

RECOVERED LIMESTONE WITH YELLOW HCSS 0.3' WEST PER NORTH PER PRIOR RECOVERY. THE STONE IS 0.4' BY 0.1' PROJECTING 0.4'. THE MONUMENT WAS LEFT IN PLACE AS RECOVERED. THIS CORNER HAS A LONG LINAGE AND HAS BEEN USED BY LOCAL SURVEYORS AS THE QUARTER CORNER SINCE CIRCA 1960. THE MONUMENT IS AT A VERY OLD AND PROMINENT CULTURAL INTERSECTION. THE POSITION OF THE CORNER IS SUPPORTED BY MEASUREMENTS TO ADJACENT MONUMENTS IN ALL CARDINAL DIRECTIONS AND BY VERY OLD AND DISTINCT CULTURAL FEATURES IN THE VICINITY. SEE SURVEY RECORDED IN SURVEY BOOK 3, PAGE 239.

MONUMENTS IN ALL CARDINAL DIRECTIONS AND BY VERY OLD AND DISTINCT CULTURAL FEATURES IN THE VICINITY. CORNER ACCESSORIES ESTABLISHED:
WEST CORNER MONUMENT BASE, SCHARES, N84°E, 20.65'
NW CORNER MONUMENT BASE, YEAGER, N2°W, 9.92'
NW CORNER MONUMENT BASE, D. W. GRESHAM, S1°W, 2.42'

O-5 QUARTER SECTION CORNER TO SECTIONS 19 & 20, T-3-S, R-5-E

RECOVERED #4 STEEL PIN WITH "T" POST ON THE WEST SIDE OF CRANDALL-LANESVILLE ROAD. THE MONUMENT IS 19'± WEST OF A CONCRETE PAVED SIDE DITCH. THE POSITION OF THE CORNER IS SUPPORTED BY MEASUREMENTS TO ADJACENT MONUMENTS IN SECTION 20 AND BY VERY OLD AND DISTINCT CULTURAL FEATURES IN THE VICINITY. SEE SURVEYS RECORDED AS INSTRUMENT #99010594 AND SURVEY BOOK 4, PAGE 94. NO CORNER ACCESSORIES ESTABLISHED THIS SURVEY.

O-9 QUARTER SECTION CORNER TO SECTIONS 20 & 21, T-3-S, R-5-E

RECOVERED LIMESTONE 0.35' BY 0.45', W/LS131 SPC ON NW SIDE AND A YELLOW HCSS, 0.5' EAST. THE MONUMENT WAS LEFT IN PLACE AS RECOVERED. THIS CORNER HAS A LONG LINAGE AND HAS BEEN USED BY LOCAL SURVEYORS AS THE QUARTER CORNER. THE POSITION OF THE CORNER IS SUPPORTED BY MEASUREMENTS TO ADJACENT MONUMENTS IN SECTION 20 AND BY VERY OLD AND DISTINCT CULTURAL FEATURES IN THE VICINITY. CORNER ACCESSORIES ESTABLISHED:
CHERRY 31", S23°E, 7.65' TO A MAG NAIL 0.5' UP ON W SIDE W/OLD HCSS
HACKBERRY 4", S82°W, 3.51' TO A MAG NAIL 0.5' UP IN S CROWN ROOT
FENCE POST, WEST, 2.4' W/HCSS

O-5 SECTION CORNER TO SECTIONS 19, 20, 29 & 30, T-3-S, R-5-E

RECOVERED SANDSTONE, 0.4' BY 0.4' PROJECTING 0.3' WITH A 1" CTP ON THE NORTH SIDE AND A YELLOW HCSS 0.7' SOUTH,, IN AN OLD N-S FENCE LINE ON THE NORTH SIDE OF A WOODS ROAD TO THE EAST. THE MONUMENT WAS LEFT IN PLACE AS RECOVERED AND A CAIRN OF ROCKS WAS PLACED AROUND THE MONUMENT. THIS CORNER HAS A LONG LINAGE AND HAS BEEN USED BY LOCAL SURVEYORS AS THE SECTION CORNER. THE POSITION OF THE CORNER IS SUPPORTED BY MEASUREMENTS TO ADJACENT MONUMENTS IN SECTION 20 AND BY VERY OLD AND DISTINCT CULTURAL FEATURES IN THE VICINITY. SEE SURVEY OF RECORD IN INSTRUMENT #99010594. CORNER ACCESSORIES ESTABLISHED:
WALNUT 18", N69°W, 68.2' TO BOTTOM NAIL OF AN OLD HCSS
SUGAR 7", EAST, 5.84' TO A MAG NAIL 0.2' UP ON S SIDE
FENCE POST, S8°E, 18.72'

O-7 QUARTER SECTION CORNER TO SECTIONS 20 & 29, T-3-S, R-5-E

RECOVERED LIMESTONE 0.5' BY 0.4' PROJECTING 0.4', WITH A #4 0.4' WEST AND AT FENCE "T". FENCE TO WEST-EAST AND NORTH. W/ YELLOW HCSS, 0.5' NORTH. THE MONUMENT WAS LEFT IN PLACE AS RECOVERED. THIS CORNER HAS A LONG LINAGE AND HAS BEEN USED BY LOCAL SURVEYORS AS THE SECTION CORNER. THE POSITION OF THE CORNER IS SUPPORTED BY MEASUREMENTS TO ADJACENT MONUMENTS IN SECTION 20 AND BY VERY OLD AND DISTINCT CULTURAL FEATURES IN THE VICINITY. SEE SURVEY RECORDED IN SURVEY BOOK 3, PAGE 239. CORNER ACCESSORIES ESTABLISHED:
FENCE CORNER 8", N49°E, 0.7' TO A MAG NAIL 0.2' UP ON NE SIDE
SUGAR 17", N4°W, 42.05'
WILLOW 4", S29°W, 8.0'
NE CORNER METAL CLAD BUILDING, S21°E, 54.5'

O-9 SECTION CORNER TO SECTIONS 20, 21, 28 & 29, T-3-S, R-5-E

RECOVERED LIMESTONE WITH YELLOW HCSS 0.3' WEST PER NORTH PER PRIOR RECOVERY. THE STONE IS 0.4' BY 0.1' PROJECTING 0.4'. THE MONUMENT WAS LEFT IN PLACE AS RECOVERED. THIS CORNER HAS A LONG LINAGE AND HAS BEEN USED BY LOCAL SURVEYORS AS THE QUARTER CORNER SINCE CIRCA 1960. THE MONUMENT IS AT A VERY OLD AND PROMINENT CULTURAL INTERSECTION. THE POSITION OF THE CORNER IS SUPPORTED BY MEASUREMENTS TO ADJACENT MONUMENTS IN ALL CARDINAL DIRECTIONS AND BY VERY OLD AND DISTINCT CULTURAL FEATURES IN THE VICINITY. SEE SURVEY RECORDED IN SURVEY BOOK 3, PAGE 239. CORNER ACCESSORIES ESTABLISHED:
FENCE POST, N31°W, 1.5'
B. OAK 16", S12°W, 15.35'
W. OAK 16", N31°W, 21.1' TO A MAG NAIL 0.6' UP ON E SIDE
W. OAK 9", N27°E, 13.90' TO A MAG NAIL 0.3' UP ON SE SIDE W/OLD HCSS
AXLE & LS131 SPC, NORTH, 33.4'±

JOB # 20077-20

Q-M

**PLAT OF SURVEY
2012 HARRISON COUNTY PERPETUATION PROJECT**

SITUATED IN SECTION 20, TOWNSHIP 3 SOUTH, RANGE 5 EAST, FRANKLIN TOWNSHIP, HARRISON,
INDIANA.

CORNERS MONUMENTED AND PERPETUATED CONTINUED

M-9 SECTION CORNER TO SECTIONS 16, 17, 20 & 21, T-3-S, R-5-E

RECOVERED ROUNDED SANDSTONE WITH A "+" CUT ON TOP, FLUSH WITH THE GROUND. THE STONE HAS A YELLOW HCSS, 0.5' WEST. THE STONE IS IN LANESVILLE CEMETERY. THE MONUMENT WAS LEFT IN PLACE AS RECOVERED. THIS CORNER HAS A LONG LINAGE AND HAS BEEN USED BY LOCAL SURVEYORS AS THE SECTION CORNER. THE POSITION OF THE CORNER IS SUPPORTED BY MEASUREMENTS TO ADJACENT MONUMENTS IN ALL CARDINAL DIRECTIONS AND BY VERY OLD AND DISTINCT CULTURAL FEATURES IN THE VICINITY. CORNER ACCESSORIES ESTABLISHED:

WEST CORNER MONUMENT BASE, SCHARS, N84°E, 20.65'
NW CORNER MONUMENT BASE, YEAGER, N2°W, 9.92'
NW CORNER MONUMENT BASE, D. W. GRESHAM, S1°W, 2.42'

O-5 QUARTER SECTION CORNER TO SECTIONS 19 & 20, T-3-S, R-5-E

RECOVERED #4 STEEL PIN WITH "T" POST ON THE WEST SIDE OF CRANDALL-LANESVILLE ROAD. THE MONUMENT IS 19'± WEST OF A CONCRETE PAVED SIDE DITCH. THE POSITION OF THE CORNER IS SUPPORTED BY MEASUREMENTS TO ADJACENT MONUMENTS IN SECTION 20 AND BY VERY OLD AND DISTINCT CULTURAL FEATURES IN THE VICINITY. SEE SURVEYS RECORDED AS INSTRUMENT #99010594 AND SURVEY BOOK 4, PAGE 94. NO CORNER ACCESSORIES ESTABLISHED THIS SURVEY.

O-9 QUARTER SECTION CORNER TO SECTIONS 20 & 21, T-3-S, R-5-E

RECOVERED LIMESTONE 0.35' BY 0.45', W/LS131 SPC ON NW SIDE AND A YELLOW HCSS, 0.5' EAST. THE MONUMENT WAS LEFT IN PLACE AS RECOVERED. THIS CORNER HAS A LONG LINAGE AND HAS BEEN USED BY LOCAL SURVEYORS AS THE QUARTER CORNER. THE POSITION OF THE CORNER IS SUPPORTED BY MEASUREMENTS TO ADJACENT MONUMENTS IN SECTION 20 AND BY VERY OLD AND DISTINCT CULTURAL FEATURES IN THE VICINITY. CORNER ACCESSORIES ESTABLISHED:

CHERRY 31", S23°E, 7.65' TO A MAG NAIL 0.5' UP ON W SIDE W/OLD HCSS
HACKBERRY 4", S82°W, 3.51' TO A MAG NAIL 0.5' UP IN S CROWN ROOT
FENCE POST, WEST, 2.4' W/HCSS

Q-5 SECTION CORNER TO SECTIONS 19, 20, 29 & 30, T-3-S, R-5-E

RECOVERED SANDSTONE, 0.4' BY 0.4' PROJECTING 0.3' WITH A 1" CTP ON THE NORTH SIDE AND A YELLOW HCSS 0.7' SOUTH, IN AN OLD N-S FENCE LINE ON THE NORTH SIDE OF A WOODS ROAD TO THE EAST. THE MONUMENT WAS LEFT IN PLACE AS RECOVERED AND A CAIRN OF ROCKS WAS PLACED AROUND THE MONUMENT. THIS CORNER HAS A LONG LINAGE AND HAS BEEN USED BY LOCAL SURVEYORS AS THE SECTION CORNER. THE POSITION OF THE CORNER IS SUPPORTED BY MEASUREMENTS TO ADJACENT MONUMENTS IN SECTION 20 AND BY VERY OLD AND DISTINCT CULTURAL FEATURES IN THE VICINITY. SEE SURVEY OF RECORD IN INSTRUMENT #99010594. CORNER ACCESSORIES ESTABLISHED:

WALNUT 18", N69°W, 68.2' TO BOTTOM NAIL OF AN OLD HCSS
SUGAR 7", EAST, 5.84' TO A MAG NAIL 0.2' UP ON S SIDE
FENCE POST, S8°E, 18.72'

Q-7 QUARTER SECTION CORNER TO SECTIONS 20 & 29, T-3-S, R-5-E

RECOVERED LIMESTONE 0.5' BY 0.4' PROJECTING 0.4', WITH A #4 0.4' WEST AND AT FENCE "T". FENCE TO WEST-EAST AND NORTH. W/ YELLOW HCSS, 0.5' NORTH. THE MONUMENT WAS LEFT IN PLACE AS RECOVERED. THIS CORNER HAS A LONG LINAGE AND HAS BEEN USED BY LOCAL SURVEYORS AS THE SECTION CORNER. THE POSITION OF THE CORNER IS SUPPORTED BY MEASUREMENTS TO ADJACENT MONUMENTS IN SECTION 20 AND BY VERY OLD AND DISTINCT CULTURAL FEATURES IN THE VICINITY. SEE SURVEY RECORDED IN SURVEY BOOK 3, PAGE 239. CORNER ACCESSORIES ESTABLISHED:

FENCE CORNER 8", N49°E, 0.7' TO A MAG NAIL 0.2' UP ON NE SIDE
SUGAR 17", N4°W, 42.05'
WILLOW 4", S29°W, 8.0'
NE CORNER METAL CLAD BUILDING, S21°E, 54.5'

Q-9 SECTION CORNER TO SECTIONS 20, 21, 28 & 29, T-3-S, R-5-E

RECOVERED LIMESTONE WITH YELLOW HCSS 0.3' WEST PER NORTH PER PRIOR RECOVERY. THE STONE IS 0.4' BY 0.1' PROJECTING 0.4'. THE MONUMENT WAS LEFT IN PLACE AS RECOVERED. THIS CORNER HAS A LONG LINAGE AND HAS BEEN USED BY LOCAL SURVEYORS AS THE QUARTER CORNER SINCE CIRCA 1960. THE MONUMENT IS AT A VERY OLD AND PROMINENT CULTURAL INTERSECTION. THE POSITION OF THE CORNER IS SUPPORTED BY MEASUREMENTS TO ADJACENT MONUMENTS IN ALL CARDINAL DIRECTIONS AND BY VERY OLD AND DISTINCT CULTURAL FEATURES IN THE VICINITY. SEE SURVEY RECORDED IN SURVEY BOOK 3, PAGE 239.

VICINITY. CORNER ACCESSORIES ESTABLISHED:
WEST CORNER MONUMENT BASE, SCHARS, N84°E, 20.65'
NW CORNER MONUMENT BASE, YEAGER, N2°W, 9.92'
NW CORNER MONUMENT BASE, D. W. GRESHAM, S1°W, 2.42'

O-5 QUARTER SECTION CORNER TO SECTIONS 19 & 20, T-3-S, R-5-E

RECOVERED #4 STEEL PIN WITH "T" POST ON THE WEST SIDE OF CRANDALL-LANESVILLE ROAD. THE MONUMENT IS 19'± WEST OF A CONCRETE PAVED SIDE DITCH. THE POSITION OF THE CORNER IS SUPPORTED BY MEASUREMENTS TO ADJACENT MONUMENTS IN SECTION 20 AND BY VERY OLD AND DISTINCT CULTURAL FEATURES IN THE VICINITY. SEE SURVEYS RECORDED AS INSTRUMENT #99010594 AND SURVEY BOOK 4, PAGE 94. NO CORNER ACCESSORIES ESTABLISHED THIS SURVEY.

O-9 QUARTER SECTION CORNER TO SECTIONS 20 & 21, T-3-S, R-5-E

RECOVERED LIMESTONE 0.35' BY 0.45', W/LS131 SPC ON NW SIDE AND A YELLOW HCSS, 0.5' EAST. THE MONUMENT WAS LEFT IN PLACE AS RECOVERED. THIS CORNER HAS A LONG LINAGE AND HAS BEEN USED BY LOCAL SURVEYORS AS THE QUARTER CORNER. THE POSITION OF THE CORNER IS SUPPORTED BY MEASUREMENTS TO ADJACENT MONUMENTS IN SECTION 20 AND BY VERY OLD AND DISTINCT CULTURAL FEATURES IN THE VICINITY. CORNER ACCESSORIES ESTABLISHED:

CHERRY 31", S23°E, 7.65' TO A MAG NAIL 0.5' UP ON W SIDE W/OLD HCSS
HACKBERRY 4", S82°W, 3.51' TO A MAG NAIL 0.5' UP IN S CROWN ROOT
FENCE POST, WEST, 2.4' W/HCSS

O-5 SECTION CORNER TO SECTIONS 19, 20, 29 & 30, T-3-S, R-5-E

RECOVERED SANDSTONE, 0.4' BY 0.4' PROJECTING 0.3' WITH A 1" CTP ON THE NORTH SIDE AND A YELLOW HCSS 0.7' SOUTH,, IN AN OLD N-S FENCE LINE ON THE NORTH SIDE OF A WOODS ROAD TO THE EAST. THE MONUMENT WAS LEFT IN PLACE AS RECOVERED AND A CAIRN OF ROCKS WAS PLACED AROUND THE MONUMENT. THIS CORNER HAS A LONG LINAGE AND HAS BEEN USED BY LOCAL SURVEYORS AS THE SECTION CORNER. THE POSITION OF THE CORNER IS SUPPORTED BY MEASUREMENTS TO ADJACENT MONUMENTS IN SECTION 20 AND BY VERY OLD AND DISTINCT CULTURAL FEATURES IN THE VICINITY. SEE SURVEY OF RECORD IN INSTRUMENT #99010594. CORNER ACCESSORIES ESTABLISHED:

WALNUT 18", N69°W, 68.2' TO BOTTOM NAIL OF AN OLD HCSS
SUGAR 7", EAST, 5.84' TO A MAG NAIL 0.2' UP ON S SIDE
FENCE POST, S8°E, 18.72'

O-7 QUARTER SECTION CORNER TO SECTIONS 20 & 29, T-3-S, R-5-E

RECOVERED LIMESTONE 0.5' BY 0.4' PROJECTING 0.4', WITH A #4 0.4' WEST AND AT FENCE "T". FENCE TO WEST-EAST AND NORTH. W/ YELLOW HCSS, 0.5' NORTH. THE MONUMENT WAS LEFT IN PLACE AS RECOVERED. THIS CORNER HAS A LONG LINAGE AND HAS BEEN USED BY LOCAL SURVEYORS AS THE SECTION CORNER. THE POSITION OF THE CORNER IS SUPPORTED BY MEASUREMENTS TO ADJACENT MONUMENTS IN SECTION 20 AND BY VERY OLD AND DISTINCT CULTURAL FEATURES IN THE VICINITY. SEE SURVEY RECORDED IN SURVEY BOOK 3, PAGE 239. CORNER ACCESSORIES ESTABLISHED:

FENCE CORNER 8", N49°E, 0.7' TO A MAG NAIL 0.2' UP ON NE SIDE
SUGAR 17", N4°W, 42.05'
WILLOW 4", S29°W, 8.0'
NE CORNER METAL CLAD BUILDING, S21°E, 54.5'

O-9 SECTION CORNER TO SECTIONS 20, 21, 28 & 29, T-3-S, R-5-E

RECOVERED LIMESTONE WITH YELLOW HCSS 0.3' WEST PER NORTH PER PRIOR RECOVERY. THE STONE IS 0.4' BY 0.1' PROJECTING 0.4'. THE MONUMENT WAS LEFT IN PLACE AS RECOVERED. THIS CORNER HAS A LONG LINAGE AND HAS BEEN USED BY LOCAL SURVEYORS AS THE QUARTER CORNER SINCE CIRCA 1960. THE MONUMENT IS AT A VERY OLD AND PROMINENT CULTURAL INTERSECTION. THE POSITION OF THE CORNER IS SUPPORTED BY MEASUREMENTS TO ADJACENT MONUMENTS IN ALL CARDINAL DIRECTIONS AND BY VERY OLD AND DISTINCT CULTURAL FEATURES IN THE VICINITY. SEE SURVEY RECORDED IN SURVEY BOOK 3, PAGE 239. CORNER ACCESSORIES ESTABLISHED:

FENCE POST, N31°W, 1.5'
B. OAK 16", S12°W, 15.35'
W. OAK 16", N31°W, 21.1' TO A MAG NAIL 0.6' UP ON E SIDE
W. OAK 9", N27°E, 13.90' TO A MAG NAIL 0.3' UP ON SE SIDE W/OLD HCSS
AXLE & LS131 SPC, NORTH, 33.4'±

HARRISON

COUNTY

COPNER 7-U

TOWNSHIP 3

RANGE 5

EAST

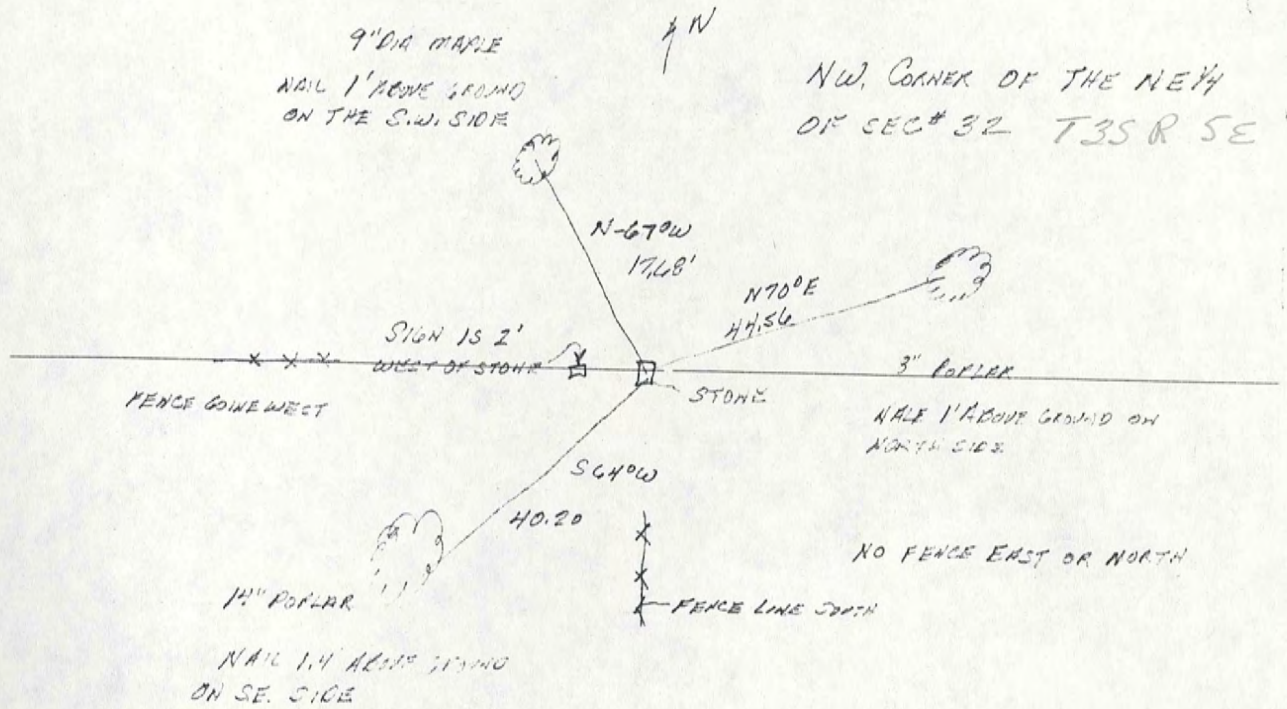
2ND

PRINCIPAL MERIDIAN

4-0

LOCATION	DESCRIPTION OF		DISTANCE FROM CORNER	BEARING FROM CORNER	DATE CHECKED	CHECKED BY	FIELD BOOK	REMARKS
	MONUMENT	REFERENCE						
N.W. Corner	Stone	8" Poplar	44.56	N70° E	1-14-91	M.B.	#4 Pg25	Sign Placed
N.E. 1/4 Sec. 32		14" Poplar	40.20	S64° W	1-14-91	M.B.		Sign Placed
		Fence going West	17.68	N67° W	1-14-91	M.B.		sign Placed

M-U



8-2

CORNER 8-0 TOWNSHIP 3 SOUTH RANGE 5 EAST 2 ND PRINCIPAL MERIDIA

LOCATION	DESCRIPTION OF		DISTANCE FROM CORNER	BEARING FROM CORNER	DATE CHECKED	CHECKED BY	FIELD BOOK	REMARKS
	MONUMENT	REFERENCE						
S.E. Corner S.W. 1/4 S.E. 1/4 Section 20	Stone	12" Beech	27.6	N18-54W	8-5-83	T.B.	#Pg.36	Sign Placed
		12" Maple	17.4	N76-23E	8-5-83	T.B.		Sign Placed
		24" Oak	10.7	S76-10W	8-5-83	T.B.		Sign Placed

Book 2 Page 36

8-Q

DIETZGEN NO 55510

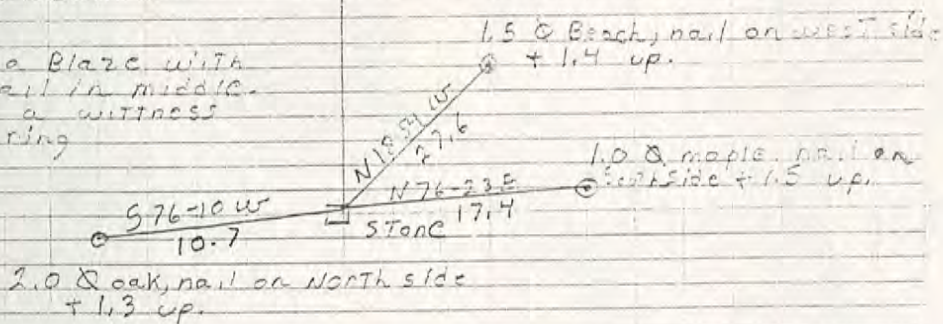
8-Q

Party Chief T. Brown

Head Chain B. Cain

Rear Chain D. Neal

All Trees have a Blaze with
a aluminum nail in middle.
All trees have a witness
sign & a red ring



SE Cor. S_{1/4}, SE_{1/4}

sect. 20 T35, R5 E

Date 8-5-83

Stone is .60 x .90 x .60 out of
ground. Stone has nail.
Stone is marked with fast &
sign on EAST side

Piece 36

9-I

HARRISON

COUNTY

CORNER 9-I TOWNSHIP 3 SOUTH RANGE 5 EAST 2 ND PRINCIPAL MERIDIAN

LOCATION	DESCRIPTION OF		DISTANCE FROM CORNER	BEARING FROM CORNER	DATE CHECKED	CHECKED BY	FIELD BOOK	REMARKS
	MONUMENT	REFERENCE						
N.E. Cor. Sec. 17	1" Pipe							
		12" Hickory	8.60	South	4-1-83	T.B.	#2 Pg. 25	Sign Placed
		4" Walnut	27.3	S13-52-40W	4-1-83	T.B.		Sign Placed
		Power Pole	40.45	S51-21-30W	4-1-83	T.B.		Sign Placed

Date 4-1-83

Party Chief T. Brown
Head Chain M. Masses
Rear Chain A. Clemmets

NORTH

9-I

All trees have a blaze with a aluminum nail in middle. Both trees + P. pole have a witness sign + a red ring around it.

1" pipe found 0.16 out of ground is marked with metal post + sign Post + sign on east side

2,00'

Double fence corner south

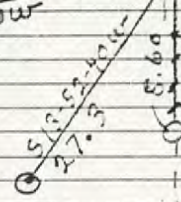
10' x Hickory, nailed the west side + 5.0' up.

Seat. 17 TBS, RSE
NE COR.

9I

1.0' x power pole 16 penny nail 40.45 on North side + 1.1' up.

551-2130W



40' x Walnut, nailed the west side + 2.9' up

9-M



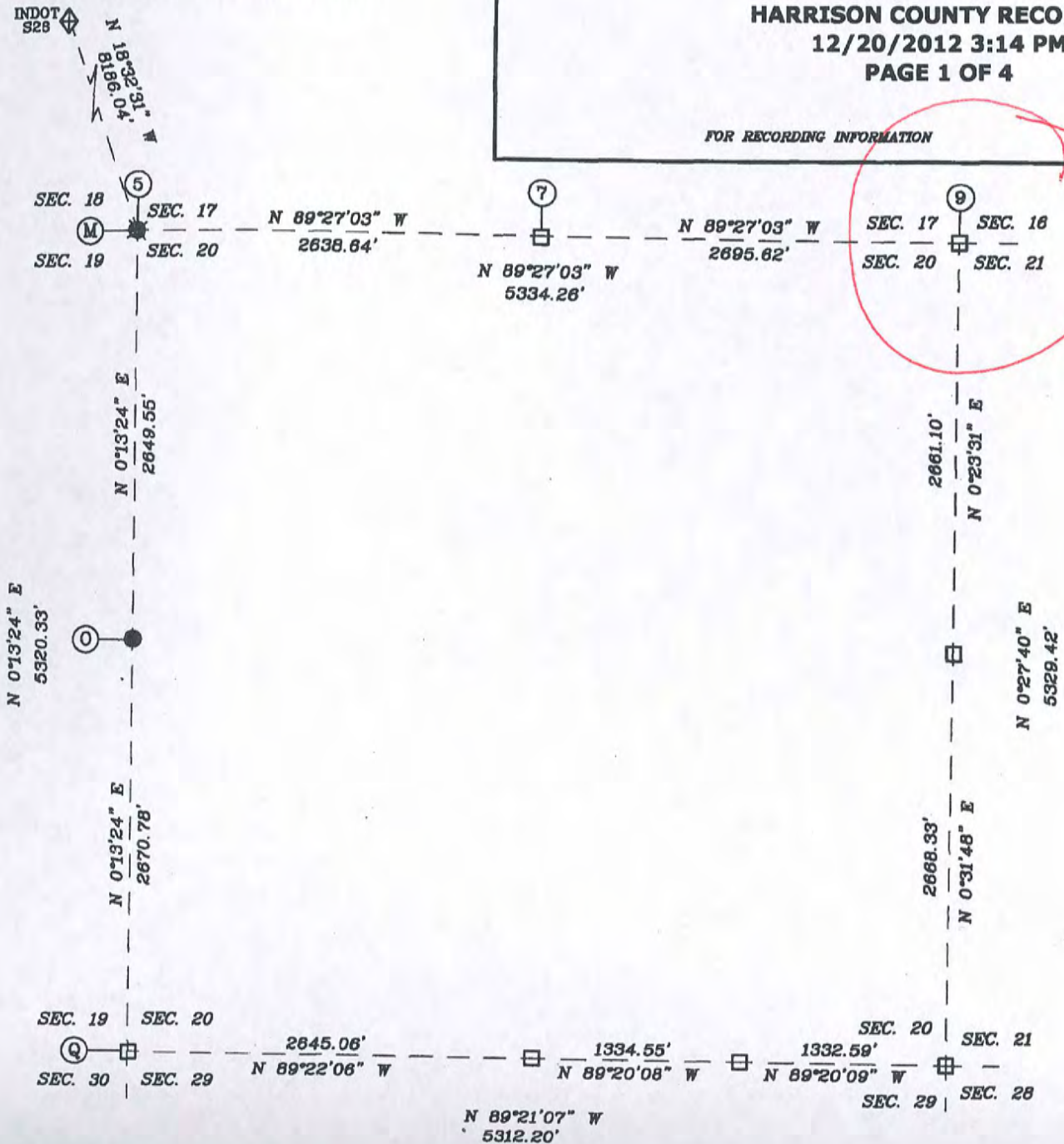
8 1 8 8 7 9 9
Tx:4014226

INST# 201206846

BARBARA BEST
HARRISON COUNTY RECORDER
12/20/2012 3:14 PM
PAGE 1 OF 4

SECTION 20,
TOWNSHIP 3 SOUTH, RANGE 5 EAST,
FRANKLIN TOWNSHIP,
HARRISON COUNTY, INDIANA

FOR RECORDING INFORMATION



SURVEYOR'S CERTIFICATE

I, VICTOR H. McCAULEY, PROFESSIONAL LAND SURVEYOR, REGISTERED BY THE LAWS OF THE STATE OF INDIANA, HEREBY DECLARE THAT I HAVE RECOVERED, RESTORED AND PERPETUATED THE CORNERS SHOWN HEREON IN SECTION 20, TOWNSHIP 3, SOUTH, RANGE 5 EAST, FRANKLIN TOWNSHIP, HARRISON COUNTY, INDIANA IN ACCORDANCE WITH IAC TITLE 865, THE RULES FOR SURVEYS OF PUBLIC LANDS AND THE STATUTES OF THE STATE OF INDIANA, ALL TO THE BEST OF MY KNOWLEDGE AND BELIEF.



LEGEND

- HISTORICAL STONE (SEE REPORT)
- EXISTING PIPE (SEE REPORT)
- ⊗ EXISTING STEEL PIN W/CAP (SEE REPORT)
- STEEL PIN W/3/8" ALUM DISC STAMPED TO DEPICT CORNER POSITION (SEE REPORT)
- EXISTING STEEL PIN (SEE REPORT)
- ◆ INDOT 528 N: 1098881.16 E: 231897.40

NORTH

VICTOR H. McCAULEY, INDIANA LS# S0336

DATE OF SURVEY: NOV. 30, 2012

LAST DATE OF FIELD WORK: NOV. 22, 2012

M-9

**PLAT OF SURVEY
2012 HARRISON COUNTY PERPETUATION PROJECT**

SITUATED IN SECTION 20, TOWNSHIP 3 SOUTH, RANGE 5 EAST, FRANKLIN TOWNSHIP, HARRISON, INDIANA.

REPORT OF SURVEY

THIS SURVEY WAS PERFORMED FOR HAROLD KLINSTIVER, HARRISON COUNTY SURVEYOR AS A PERPETUATION PROJECT FOR THE CORNERS IN SECTION 20, TOWNSHIP 3 SOUTH, RANGE 5 EAST, FRANKLIN TOWNSHIP, HARRISON, INDIANA. THIS SURVEY IS A CONTINUATION OF SEVERAL PRIOR SURVEYS, IN THE SAME VICINITY, BY THIS FIRM.

THE ORIGINAL GOVERNMENT SURVEYS WERE CONDUCTED BY AARON DAYTON, SURVEYOR IN NOVEMBER OF 1805. SUBSEQUENT SURVEYS WERE PERFORMED BY HARRISON COUNTY SURVEYORS AND PRIVATE SURVEYORS AS CITED BELOW. THE ORIGINAL AND SUBSEQUENT SURVEYOR NOTES ARE ON FILE IN THE HARRISON COUNTY SURVEYOR'S OFFICE.

PRIOR TO PERFORMING THIS SURVEY, I REVIEWED THE AVAILABLE ORIGINAL, SUBSEQUENT AND PRIVATE SURVEY NOTES. I RESEARCHED PERTINENT DEEDS AND ADJOINING DEEDS. I CONTACTED ADJOINING LAND OWNERS, CONSULTED WITH THE HARRISON COUNTY SURVEYOR AND OTHER LOCAL SURVEYORS FOR INFORMATION PERTAINING TO THE LOCATION OF CORNERS NEEDED TO PERFORM THIS SURVEY.

THE CORNERS RECOVERED, RESTORED AND PERPETUATED BY THIS SURVEY ARE MARKED IN THE LEGEND. THE BEARING BETWEEN MONUMENTS IS GRID NORTH AS DETERMINED BY GPS SURVEYS.

HORIZONTAL AND VERTICAL CONTROLS FOR THIS SURVEY ARE BASED ON STATIC AND RTK GPS METHODS AND COORDINATES WERE CONSTRAINED TO AN NGS OPUS SOLUTION POSITION, INDIANA STATE PLANE COORDINATE SYSTEM, EAST ZONE, 1983 (2012) DATUM, FOR AN ON-SITE GPS BASE STATION. THIS IS A RETRACEMENT "RURAL CLASS SURVEY" AS DEFINED BY 865 IAC 1-12 SECTION 20, PARAGRAPH 3 (e-3) AND THE FIELD WORK IS WITHIN THE "RELATIVE POSITIONAL ACCURACY" SPECIFICATIONS CITED THEREIN.

CONVENTIONAL TERRESTRIAL TRAVERSES WERE USED TO DETERMINE CORNER POSITIONS THAT WERE DEEMED UNSUITABLE FOR GPS OBSERVATIONS. THE POSITION OF MONUMENTS WAS VERIFIED WITH REDUNDANT MEASUREMENTS. ALL TRAVERSES WERE EITHER CLOSED TRAVERSES OR WERE CONTROLLED BY GPS SURVEY METHODS

THIS SURVEY IS BASED ON THE INDIANA STATE PLANE COORDINATE SYSTEM, EAST ZONE, 1983 (2012) DATUM, U.S. SURVEY FOOT. THE DISTANCES SHOWN ARE SEA LEVEL GRID DISTANCES, BASED ON A COMBINED SCALE FACTOR OF 0.99994016. TO CONVERT SURVEY DISTANCES TO HORIZONTAL GROUND LEVEL DISTANCES, DIVIDE THE SURVEY DISTANCES BY THE SCALE FACTOR

CORNERS MONUMENTED AND PERPETUATED

M-5 SECTION CORNER TO SECTIONS 17, 18, 19 & 20, T-3-S, R-5-E

RESTORED CORNER POSITION PER THE STANDARD INSTRUCTIONS, FROM CORNERS RECOVERED IN ALL CARDINAL DIRECTIONS. SET #5 BY 30" STEEL PIN WITH 3/4" ALUMINUM DISK STAMPED (0.4' DEEP) TO DEPICT THE CORNER POSITION. THE MONUMENT IS IN A CRUSHED STONE DRIVEWAY ON THE NORTH SIDE LAZY CREEK ROAD, ABOUT 2'± NORTH OF A 24" CMP, NEAR A VERY OLD AND PROMINENT CULTURAL INTERSECTION. THE POSITION OF THE CORNER IS SUPPORTED BY MEASUREMENTS TO ADJACENT MONUMENTS IN ALL CARDINAL DIRECTIONS AND BY VERY OLD AND DISTINCT CULTURAL FEATURES IN THE VICINITY. CORNER ACCESSORIES ESTABLISHED:

- B. OAK 30", S65°E, 38.7' TO A MAG NAIL 0.6' UP ON NE SIDE
- UTILITY POLE, N72°E, 30.80' TO A MAG NAIL 0.6' UP ON S SIDE
- UTILITY POLE, N86°W, 39.27' TO BOTTOM SIGN NAIL OF HCSS
- 38 CALIBER HOLE IN EAST END OF 24" CMP, S65°E, 15.13'

M-7 QUARTER CORNER TO SECTIONS 20 & 17, T-3-S, R-5-E

RECOVERED PINNACLE LIMESTONE WITH YELLOW HCSS, 1' NORTH PER PRIOR RECOVERY. THE STONE IS 0.5' BY 0.5' PROJECTING 1.8', WITH A SMALL "+" CUT ON TOP. THE MONUMENT WAS LEFT IN PLACE AS RECOVERED. THIS CORNER HAS A LONG LINAGE AND HAS BEEN USED BY LOCAL SURVEYORS AS THE QUARTER CORNER SINCE CIRCA 1960. THE MONUMENT IS AT A VERY OLD AND PROMINENT CULTURAL INTERSECTION. THE POSITION OF THE CORNER IS SUPPORTED BY MEASUREMENTS TO ADJACENT MONUMENTS

THE ORIGINAL GOVERNMENT SURVEYS WERE CONDUCTED BY AARON DAYTON, SURVEYOR IN NOVEMBER OF 1805. SUBSEQUENT SURVEYS WERE PERFORMED BY HARRISON COUNTY SURVEYORS AND PRIVATE SURVEYORS AS CITED BELOW. THE ORIGINAL AND SUBSEQUENT SURVEYOR NOTES ARE ON FILE IN THE HARRISON COUNTY SURVEYOR'S OFFICE.

PRIOR TO PERFORMING THIS SURVEY, I REVIEWED THE AVAILABLE ORIGINAL, SUBSEQUENT AND PRIVATE SURVEY NOTES. I RESEARCHED PERTINENT DEEDS AND ADJOINING DEEDS. I CONTACTED ADJOINING LAND OWNERS, CONSULTED WITH THE HARRISON COUNTY SURVEYOR AND OTHER LOCAL SURVEYORS FOR INFORMATION PERTAINING TO THE LOCATION OF CORNERS NEEDED TO PERFORM THIS SURVEY.

THE CORNERS RECOVERED, RESTORED AND PERPETUATED BY THIS SURVEY ARE MARKED IN THE LEGEND. THE BEARING BETWEEN MONUMENTS IS GRID NORTH AS DETERMINED BY GPS SURVEYS.

HORIZONTAL AND VERTICAL CONTROLS FOR THIS SURVEY ARE BASED ON STATIC AND RTK GPS METHODS AND COORDINATES WERE CONSTRAINED TO AN NGS OPUS SOLUTION POSITION, INDIANA STATE PLANE COORDINATE SYSTEM, EAST ZONE, 1983 (2012) DATUM, FOR AN ON-SITE GPS BASE STATION. THIS IS A RETRACEMENT "RURAL CLASS SURVEY" AS DEFINED BY 865 IAC 1-12 SECTION 20, PARAGRAPH 3 (e-3) AND THE FIELD WORK IS WITHIN THE "RELATIVE POSITIONAL ACCURACY" SPECIFICATIONS CITED THEREIN.

CONVENTIONAL TERRESTRIAL TRAVERSES WERE USED TO DETERMINE CORNER POSITIONS THAT WERE DEEMED UNSUITABLE FOR GPS OBSERVATIONS. THE POSITION OF MONUMENTS WAS VERIFIED WITH REDUNDANT MEASUREMENTS. ALL TRAVERSES WERE EITHER CLOSED TRAVERSES OR WERE CONTROLLED BY GPS SURVEY METHODS

THIS SURVEY IS BASED ON THE INDIANA STATE PLANE COORDINATE SYSTEM, EAST ZONE, 1983 (2012) DATUM, U.S. SURVEY FOOT. THE DISTANCES SHOWN ARE SEA LEVEL GRID DISTANCES, BASED ON A COMBINED SCALE FACTOR OF 0.99994016. TO CONVERT SURVEY DISTANCES TO HORIZONTAL GROUND LEVEL DISTANCES, DIVIDE THE SURVEY DISTANCES BY THE SCALE FACTOR

CORNERS MONUMENTED AND PERPETUATED

M-5 SECTION CORNER TO SECTIONS 17, 18, 19 & 20, T-3-S, R-5-E

RESTORED CORNER POSITION PER THE STANDARD INSTRUCTIONS, FROM CORNERS RECOVERED IN ALL CARDINAL DIRECTIONS. SET #5 BY 30" STEEL PIN WITH 3/4" ALUMINUM DISK STAMPED (0.4' DEEP) TO DEPICT THE CORNER POSITION. THE MONUMENT IS IN A CRUSHED STONE DRIVEWAY ON THE NORTH SIDE LAZY CREEK ROAD, ABOUT 2'± NORTH OF A 24" CMP, NEAR A VERY OLD AND PROMINENT CULTURAL INTERSECTION. THE POSITION OF THE CORNER IS SUPPORTED BY MEASUREMENTS TO ADJACENT MONUMENTS IN ALL CARDINAL DIRECTIONS AND BY VERY OLD AND DISTINCT CULTURAL FEATURES IN THE VICINITY. CORNER ACCESSORIES ESTABLISHED:

B. OAK 30", S65°E, 38.7' TO A MAG NAIL 0.6' UP ON NE SIDE
UTILITY POLE, N72°E, 30.80' TO A MAG NAIL 0.6' UP ON S SIDE
UTILITY POLE, N86°W, 39.27' TO BOTTOM SIGN NAIL OF HCSS
38 CALIBER HOLE IN EAST END OF 24" CMP, S65°E, 15.13'

M-7 QUARTER CORNER TO SECTIONS 20 & 17, T-3-S, R-5-E

RECOVERED PINNACLE LIMESTONE WITH YELLOW HCSS, 1' NORTH PER PRIOR RECOVERY. THE STONE IS 0.5' BY 0.5' PROJECTING 1.8', WITH A SMALL "+" CUT ON TOP. THE MONUMENT WAS LEFT IN PLACE AS RECOVERED. THIS CORNER HAS A LONG LINAGE AND HAS BEEN USED BY LOCAL SURVEYORS AS THE QUARTER CORNER SINCE CIRCA 1960. THE MONUMENT IS AT A VERY OLD AND PROMINENT CULTURAL INTERSECTION. THE POSITION OF THE CORNER IS SUPPORTED BY MEASUREMENTS TO ADJACENT MONUMENTS IN ALL CARDINAL DIRECTIONS AND BY VERY OLD AND DISTINCT CULTURAL FEATURES IN THE VICINITY. SEE HIGH RIDGE SUBDIVISION PLAT BOOK 3, PAGE 174. CORNER ACCESSORIES ESTABLISHED:

B. OAK 32", S47°W, 17.44' TO A MAG NAIL 0.6' UP IN N CROWN ROOT
HICKORY 8", N68°W, 9.67' TO A MAG NAIL 0.6' UP IN NE CROWN ROOT
SUGAR 8", S39°E, 40.6'

**PLAT OF SURVEY
2012 HARRISON COUNTY PERPETUATION PROJECT**

SITUATED IN SECTION 20, TOWNSHIP 3 SOUTH, RANGE 5 EAST, FRANKLIN TOWNSHIP, HARRISON, INDIANA.

CORNERS MONUMENTED AND PERPETUATED CONTINUED

M-9 SECTION CORNER TO SECTIONS 16, 17, 20 & 21, T-3-S, R-5-E

RECOVERED ROUNDED SANDSTONE WITH A "+" CUT ON TOP, FLUSH WITH THE GROUND. THE STONE HAS A YELLOW HCSS, 0.5' WEST. THE STONE IS IN LANESVILLE CEMETERY. THE MONUMENT WAS LEFT IN PLACE AS RECOVERED. THIS CORNER HAS A LONG LINAGE AND HAS BEEN USED BY LOCAL SURVEYORS AS THE SECTION CORNER. THE POSITION OF THE CORNER IS SUPPORTED BY MEASUREMENTS TO ADJACENT MONUMENTS IN ALL CARDINAL DIRECTIONS AND BY VERY OLD AND DISTINCT CULTURAL FEATURES IN THE VICINITY. CORNER ACCESSORIES ESTABLISHED:

WEST CORNER MONUMENT BASE, SCHARES, N84°E, 20.65'
NW CORNER MONUMENT BASE, YEAGER, N2°W, 9.92'
NW CORNER MONUMENT BASE, D. W. GRESHAM, S1°W, 2.42'

O-5 QUARTER SECTION CORNER TO SECTIONS 19 & 20, T-3-S, R-5-E

RECOVERED #4 STEEL PIN WITH "T" POST ON THE WEST SIDE OF CRANDALL-LANESVILLE ROAD. THE MONUMENT IS 19'± WEST OF A CONCRETE PAVED SIDE DITCH. THE POSITION OF THE CORNER IS SUPPORTED BY MEASUREMENTS TO ADJACENT MONUMENTS IN SECTION 20 AND BY VERY OLD AND DISTINCT CULTURAL FEATURES IN THE VICINITY. SEE SURVEYS RECORDED AS INSTRUMENT #99010594 AND SURVEY BOOK 4, PAGE 94. NO CORNER ACCESSORIES ESTABLISHED THIS SURVEY.

O-9 QUARTER SECTION CORNER TO SECTIONS 20 & 21, T-3-S, R-5-E

RECOVERED LIMESTONE 0.35' BY 0.45', W/LS131 SPC ON NW SIDE AND A YELLOW HCSS, 0.5' EAST. THE MONUMENT WAS LEFT IN PLACE AS RECOVERED. THIS CORNER HAS A LONG LINAGE AND HAS BEEN USED BY LOCAL SURVEYORS AS THE QUARTER CORNER. THE POSITION OF THE CORNER IS SUPPORTED BY MEASUREMENTS TO ADJACENT MONUMENTS IN SECTION 20 AND BY VERY OLD AND DISTINCT CULTURAL FEATURES IN THE VICINITY. CORNER ACCESSORIES ESTABLISHED:

CHERRY 31", S23°E, 7.65' TO A MAG NAIL 0.5' UP ON W SIDE W/OLD HCSS
HACKBERRY 4", S82°W, 3.51' TO A MAG NAIL 0.5' UP IN S CROWN ROOT
FENCE POST, WEST, 2.4' W/HCSS

O-5 SECTION CORNER TO SECTIONS 19, 20, 29 & 30, T-3-S, R-5-E

RECOVERED SANDSTONE, 0.4' BY 0.4' PROJECTING 0.3' WITH A 1" CTP ON THE NORTH SIDE AND A YELLOW HCSS 0.7' SOUTH,, IN AN OLD N-S FENCE LINE ON THE NORTH SIDE OF A WOODS ROAD TO THE EAST. THE MONUMENT WAS LEFT IN PLACE AS RECOVERED AND A CAIRN OF ROCKS WAS PLACED AROUND THE MONUMENT. THIS CORNER HAS A LONG LINAGE AND HAS BEEN USED BY LOCAL SURVEYORS AS THE SECTION CORNER. THE POSITION OF THE CORNER IS SUPPORTED BY MEASUREMENTS TO ADJACENT MONUMENTS IN SECTION 20 AND BY VERY OLD AND DISTINCT CULTURAL FEATURES IN THE VICINITY. SEE SURVEY OF RECORD IN INSTRUMENT #99010594. CORNER ACCESSORIES ESTABLISHED:

WALNUT 18", N69°W, 68.2' TO BOTTOM NAIL OF AN OLD HCSS
SUGAR 7", EAST, 5.84' TO A MAG NAIL 0.2' UP ON S SIDE
FENCE POST, S8°E, 18.72'

O-7 QUARTER SECTION CORNER TO SECTIONS 20 & 29, T-3-S, R-5-E

RECOVERED LIMESTONE 0.5' BY 0.4' PROJECTING 0.4', WITH A #4 0.4' WEST AND AT FENCE "T". FENCE TO WEST-EAST AND NORTH. W/ YELLOW HCSS, 0.5' NORTH. THE MONUMENT WAS LEFT IN PLACE AS RECOVERED. THIS CORNER HAS A LONG LINAGE AND HAS BEEN USED BY LOCAL SURVEYORS AS THE SECTION CORNER. THE POSITION OF THE CORNER IS SUPPORTED BY MEASUREMENTS TO ADJACENT MONUMENTS IN SECTION 20 AND BY VERY OLD AND DISTINCT CULTURAL FEATURES IN THE VICINITY. SEE SURVEY RECORDED IN SURVEY BOOK 3, PAGE 239. CORNER ACCESSORIES ESTABLISHED:

FENCE CORNER 8", N49°E, 0.7' TO A MAG NAIL 0.2' UP ON NE SIDE
SUGAR 17", N4°W, 42.05'
WILLOW 4", S29°W, 8.0'
NE CORNER METAL CLAD BUILDING, S21°E, 54.5'

O-9 SECTION CORNER TO SECTIONS 20, 21, 28 & 29, T-3-S, R-5-E

RECOVERED LIMESTONE WITH YELLOW HCSS 0.3' WEST PER NORTH PER PRIOR RECOVERY. THE STONE IS 0.4' BY 0.1' PROJECTING 0.4'. THE MONUMENT WAS LEFT IN PLACE AS RECOVERED. THIS CORNER HAS A LONG LINAGE AND HAS BEEN USED BY LOCAL SURVEYORS AS THE QUARTER CORNER SINCE CIRCA 1960. THE MONUMENT IS AT A VERY OLD AND PROMINENT CULTURAL INTERSECTION. THE POSITION OF THE CORNER IS SUPPORTED BY MEASUREMENTS TO ADJACENT MONUMENTS IN ALL CARDINAL DIRECTIONS AND BY VERY OLD AND DISTINCT CULTURAL FEATURES IN THE VICINITY. SEE SURVEY RECORDED IN SURVEY BOOK 3, PAGE 239.

VICINITY. CORNER ACCESSORIES ESTABLISHED:
WEST CORNER MONUMENT BASE, SCHARES, N84°E, 20.65'
NW CORNER MONUMENT BASE, YEAGER, N2°W, 9.92'
NW CORNER MONUMENT BASE, D. W. GRESHAM, S1°W, 2.42'

Q-5 QUARTER SECTION CORNER TO SECTIONS 19 & 20, T-3-S, R-5-E

RECOVERED #4 STEEL PIN WITH "T" POST ON THE WEST SIDE OF CRANDALL-LANESVILLE ROAD. THE MONUMENT IS 19'± WEST OF A CONCRETE PAVED SIDE DITCH. THE POSITION OF THE CORNER IS SUPPORTED BY MEASUREMENTS TO ADJACENT MONUMENTS IN SECTION 20 AND BY VERY OLD AND DISTINCT CULTURAL FEATURES IN THE VICINITY. SEE SURVEYS RECORDED AS INSTRUMENT #99010594 AND SURVEY BOOK 4, PAGE 94. NO CORNER ACCESSORIES ESTABLISHED THIS SURVEY.

Q-9 QUARTER SECTION CORNER TO SECTIONS 20 & 21, T-3-S, R-5-E

RECOVERED LIMESTONE 0.35' BY 0.45', W/LS131 SPC ON NW SIDE AND A YELLOW HCSS, 0.5' EAST. THE MONUMENT WAS LEFT IN PLACE AS RECOVERED. THIS CORNER HAS A LONG LINAGE AND HAS BEEN USED BY LOCAL SURVEYORS AS THE QUARTER CORNER. THE POSITION OF THE CORNER IS SUPPORTED BY MEASUREMENTS TO ADJACENT MONUMENTS IN SECTION 20 AND BY VERY OLD AND DISTINCT CULTURAL FEATURES IN THE VICINITY. CORNER ACCESSORIES ESTABLISHED:
CHERRY 31", S23°E, 7.65' TO A MAG NAIL 0.5' UP ON W SIDE W/OLD HCSS
HACKBERRY 4", S82°W, 3.51' TO A MAG NAIL 0.5' UP IN S CROWN ROOT
FENCE POST, WEST, 2.4' W/HCSS

Q-5 SECTION CORNER TO SECTIONS 19, 20, 29 & 30, T-3-S, R-5-E

RECOVERED SANDSTONE, 0.4' BY 0.4' PROJECTING 0.3' WITH A 1" CTP ON THE NORTH SIDE AND A YELLOW HCSS 0.7' SOUTH,, IN AN OLD N-S FENCE LINE ON THE NORTH SIDE OF A WOODS ROAD TO THE EAST. THE MONUMENT WAS LEFT IN PLACE AS RECOVERED AND A CAIRN OF ROCKS WAS PLACED AROUND THE MONUMENT. THIS CORNER HAS A LONG LINAGE AND HAS BEEN USED BY LOCAL SURVEYORS AS THE SECTION CORNER. THE POSITION OF THE CORNER IS SUPPORTED BY MEASUREMENTS TO ADJACENT MONUMENTS IN SECTION 20 AND BY VERY OLD AND DISTINCT CULTURAL FEATURES IN THE VICINITY. SEE SURVEY OF RECORD IN INSTRUMENT #99010594. CORNER ACCESSORIES ESTABLISHED:
WALNUT 18", N69°W, 68.2' TO BOTTOM NAIL OF AN OLD HCSS
SUGAR 7", EAST, 5.84' TO A MAG NAIL 0.2' UP ON S SIDE
FENCE POST, S8°E, 18.72'

Q-7 QUARTER SECTION CORNER TO SECTIONS 20 & 29, T-3-S, R-5-E

RECOVERED LIMESTONE 0.5' BY 0.4' PROJECTING 0.4', WITH A #4 0.4' WEST AND AT FENCE "T". FENCE TO WEST-EAST AND NORTH. W/ YELLOW HCSS, 0.5' NORTH. THE MONUMENT WAS LEFT IN PLACE AS RECOVERED. THIS CORNER HAS A LONG LINAGE AND HAS BEEN USED BY LOCAL SURVEYORS AS THE SECTION CORNER. THE POSITION OF THE CORNER IS SUPPORTED BY MEASUREMENTS TO ADJACENT MONUMENTS IN SECTION 20 AND BY VERY OLD AND DISTINCT CULTURAL FEATURES IN THE VICINITY. SEE SURVEY RECORDED IN SURVEY BOOK 3, PAGE 239. CORNER ACCESSORIES ESTABLISHED:
FENCE CORNER 8", N49°E, 0.7' TO A MAG NAIL 0.2' UP ON NE SIDE
SUGAR 17", N4°W, 42.05'
WILLOW 4", S29°W, 8.0'
NE CORNER METAL CLAD BUILDING, S21°E, 54.5'

Q-9 SECTION CORNER TO SECTIONS 20, 21, 28 & 29, T-3-S, R-5-E

RECOVERED LIMESTONE WITH YELLOW HCSS 0.3' WEST PER NORTH PER PRIOR RECOVERY. THE STONE IS 0.4' BY 0.1' PROJECTING 0.4'. THE MONUMENT WAS LEFT IN PLACE AS RECOVERED. THIS CORNER HAS A LONG LINAGE AND HAS BEEN USED BY LOCAL SURVEYORS AS THE QUARTER CORNER SINCE CIRCA 1960. THE MONUMENT IS AT A VERY OLD AND PROMINENT CULTURAL INTERSECTION. THE POSITION OF THE CORNER IS SUPPORTED BY MEASUREMENTS TO ADJACENT MONUMENTS IN ALL CARDINAL DIRECTIONS AND BY VERY OLD AND DISTINCT CULTURAL FEATURES IN THE VICINITY. SEE SURVEY RECORDED IN SURVEY BOOK 3, PAGE 239. CORNER ACCESSORIES ESTABLISHED:
FENCE POST, N31°W, 1.5'
B. OAK 16", S12°W, 15.35'
W. OAK 16", N31°W, 21.1' TO A MAG NAIL 0.6' UP ON E SIDE
W. OAK 9", N27°E, 13.90' TO A MAG NAIL 0.3' UP ON SE SIDE W/OLD HCSS
AXLE & LS131 SPC, NORTH, 33.4'±

JOB # 20077-20

HARRISON

COUNTY

CORNER 9-0

TOWNSHIP 3

RANGE 5

EAST

2ND

PRINCIPAL MERIDIAN

9-0

LOCATION	DESCRIPTION OF		DISTANCE FROM CORNER	BEARING FROM CORNER	DATE CHECKED	CHECKED BY	FIELD BOOK	REMARKS
	MONUMENT	REFERENCE						
N.E. CORNER S.E. 1/4 SECTION 20	STONE HAS FULL X IN TOP	FULL X IN TOP	2.6'	WEST	2-14-94	T.B.	#4 PG50	SIGN PLACED
		1.70' CHERRY	2.0'	WEST				SIGN PLACED
		0.50' CHERRY	46.4'	S88-46-0W				SIGN PLACED

2-7-94

0.60 Q oak, nail on east side + 1.5' up.

N25-22E 13.5

S.E. cor sect 21

T35 R5E

0.80 Q maple, nail on south side + 2.3' up.

0.60 Q oak, nail on south side + 2' up.

N77-18E 11.5

560-52 or 23.6

Stone is .40' x .15' x .50' out of ground. Stone is marked with a post + sign.

All trees have a witness sign, all trees have a bludge with a aluminum in middle

Party Chief T. Brown
Head Chain R. Mills
Rear Chain B. Moses.

13-9 Page 50

9-0

Party Chief T. Brown

Head Chain R. Mills

Rear Chain B. Moses

DATE 2-14-94

588-46-0 or 46.4'

Both Trees + Fence Cor. have a witness sign. Both Trees + Fence Cor. have a aluminum Reference nail

WEST 2.6' Stone has a Full

X in Top.

#4

STONE STONE is .50' x .40' x .10' underground. Stone is marked with post + sign

0.50 Q Cherry, nail on north side + 1.5' up.

S33-41-0E 7.6'

up.

1.70 Q Cherry, nail on west side + 2.0' up.

NE. COR. SEY4

SECT. 20 T35 R5E

Page 50
9-0

Both pages are page 50 13-9 + 9-0

9-0

DIETZGARD No. 385-3

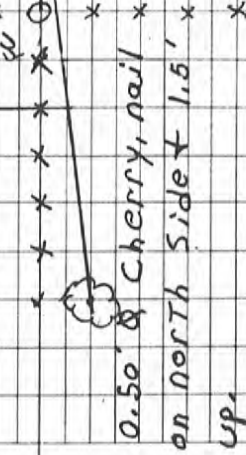
Party Chief T. Brown

Head Chain R. Mills

Rear Chain B. Moses

DATE 2-14-94

588-96-01ur 46.4'



0.50' & Cherry, nail

on north side + 1.5' up.

1.70' & Cherry, nail on west side + 2.0' up.

NE. COR. 5 E 74

SECT. 20 T 35 R 5 E

9.0

Both Traces + Fence Cor. have

a witness sign. Both Trees +

Fence Cor. have a aluminium

Reference nail

WEST 2.6' Stone has a full

#4 X in Top.

STONE is .50' x .40'

X .10' underground. Stone

is marked with post + sign

S 33-41-0 E 7.6'

Harrison Co. No. ✓ 9-0

T 3 S, R 5 E 2nd Prin. Mer. County Harrison State Indiana

Quarter Corner common to Sections 20 and 21

EXISTING SURVEYS	
No Original Government Survey Evidence Recovered	Picture
N/A	N/A
Subsequent Corner Restoration	Evidence of Subsequent Corner Restoration Found
Year surveyed _____ By _____ Where filed or recorded _____ Monument _____ <small>(Original, concrete post, iron rod, etc...)</small>	Year of search <u>2012</u> By <u>VHM</u> <u>Recovered limestone 0.35' by 0.45', with LS131 steel pin and cap on NW side and a yellow HCSS, 0.5' East</u>
Bearing Trees, Reference Objects Species _____ Diameter _____ Bearing _____ Distance _____	
<div style="border: 1px solid black; padding: 5px; width: fit-content; margin: 0 auto;"> </div>	<p style="text-align: center;">Perpetuation Record</p> <p>Monument and accessories established. Include brief description of area. <u>The monument was left in place as recovered. The corner has a long lineage and as been used by local surveyors as the Quarter Corner. The position of the corner is supported by measurements to adjacent monuments in Section 20 and by very old and distinct cultural features in the vicinity. Corner accessories established:</u></p> <p><u>Cherry 31", S 23° E, 7.65' to a mag nail 0.5' up on West side w/old Harrison County Surveyor's sign</u></p> <p><u>Hackberry 4", S 82° W, 3.51' to a mag nail 0.5' up in South crown root Fence Post, West 2.4' with Harrison County Surveyor's sign</u></p> <p>N: 1088407.88 { Corner E: 239816.38 {</p> <p style="text-align: right; font-family: cursive; font-size: 1.2em;">Haskins 2014</p>
Signature <u>V. H. M.</u> Date: <u>November 30, 2012</u>	

9-0



8 1 8 8 7 9 9
Tx:4014226

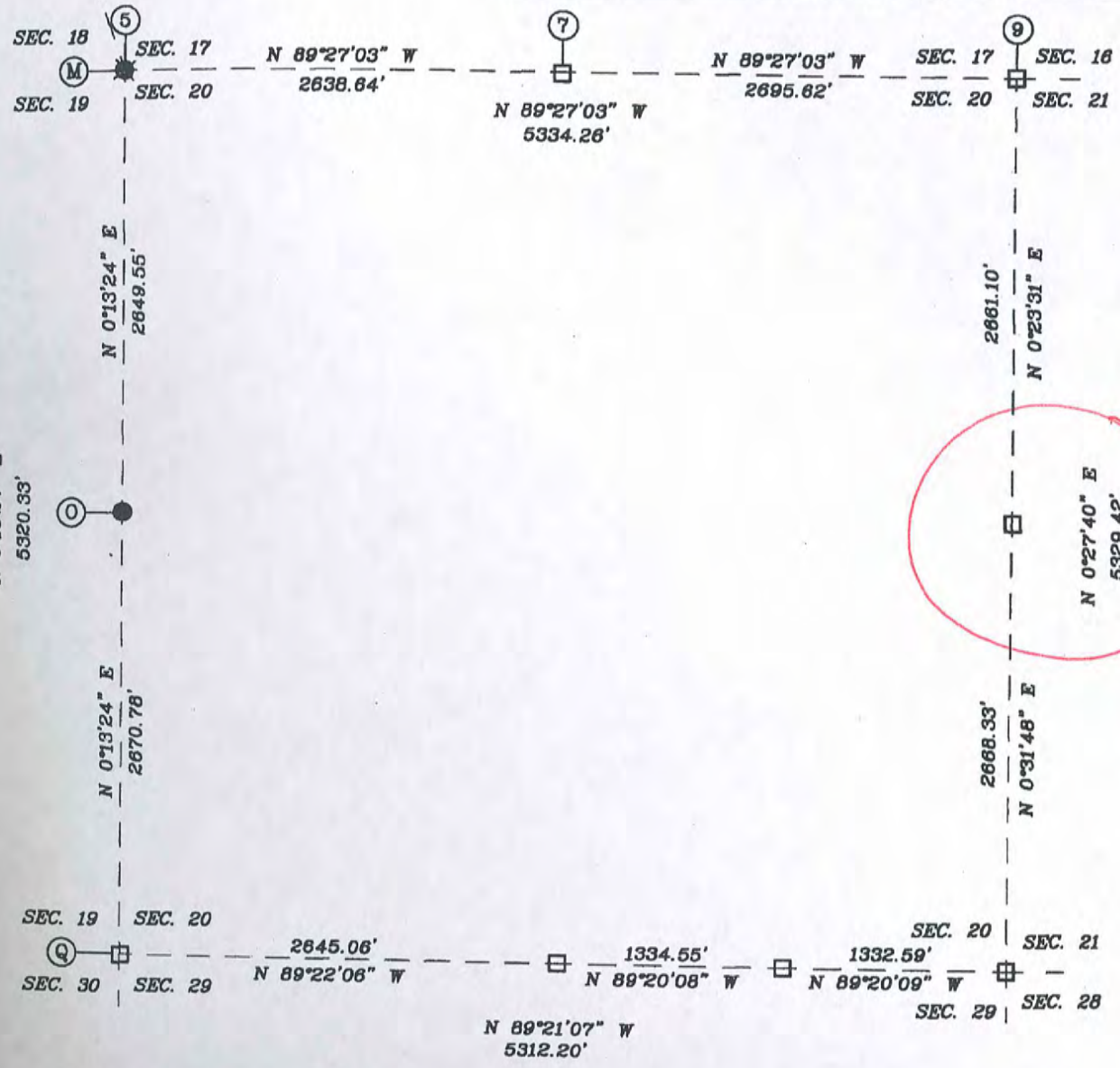
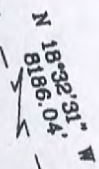
INST# 201206846

BARBARA BEST
HARRISON COUNTY RECORDER
12/20/2012 3:14 PM
PAGE 1 OF 4

FOR RECORDING INFORMATION

SECTION 20,
TOWNSHIP 3 SOUTH, RANGE 5 EAST,
FRANKLIN TOWNSHIP,
HARRISON COUNTY, INDIANA

INDOT
S23



SURVEYOR'S CERTIFICATE

I, VICTOR H. McCAULEY, PROFESSIONAL LAND SURVEYOR, REGISTERED BY THE LAWS OF THE STATE OF INDIANA, HEREBY DECLARE THAT I HAVE RECOVERED, RESTORED AND PERPETUATED THE CORNERS SHOWN HEREON IN SECTION 20, TOWNSHIP 3, SOUTH, RANGE 5 EAST, FRANKLIN TOWNSHIP, HARRISON COUNTY, INDIANA IN ACCORDANCE WITH IAC TITLE 865, THE RULES FOR SURVEYS OF PUBLIC LANDS AND THE STATUTES OF THE STATE OF INDIANA, ALL TO THE BEST OF MY KNOWLEDGE AND BELIEF.

Victor H. McCauley

VICTOR H. McCAULEY, INDIANA LS# S0336

DATE OF SURVEY: NOV. 30, 2012



LEGEND

- HISTORICAL STONE (SEE REPORT)
- EXISTING PIPE (SEE REPORT)
- ⊗ EXISTING STEEL PIN W/CAP (SEE REPORT)
- STEEL PIN W/3/8" ALUM. DISC STAMPED TO DEPICT CORNER POSITION (SEE REPORT)
- EXISTING STEEL PIN (SEE REPORT)
- ◆ INDOT 333 N: 1088881.16 E: 231897.40

NORTH

0-9

**PLAT OF SURVEY
2012 HARRISON COUNTY PERPETUATION PROJECT**

SITUATED IN SECTION 20, TOWNSHIP 3 SOUTH, RANGE 5 EAST, FRANKLIN TOWNSHIP, HARRISON, INDIANA.

REPORT OF SURVEY

THIS SURVEY WAS PERFORMED FOR HAROLD KLINSTIVER, HARRISON COUNTY SURVEYOR AS A PERPETUATION PROJECT FOR THE CORNERS IN SECTION 20, TOWNSHIP 3 SOUTH, RANGE 5 EAST, FRANKLIN TOWNSHIP, HARRISON, INDIANA. THIS SURVEY IS A CONTINUATION OF SEVERAL PRIOR SURVEYS, IN THE SAME VICINITY, BY THIS FIRM.

THE ORIGINAL GOVERNMENT SURVEYS WERE CONDUCTED BY AARON DAYTON, SURVEYOR IN NOVEMBER OF 1805. SUBSEQUENT SURVEYS WERE PERFORMED BY HARRISON COUNTY SURVEYORS AND PRIVATE SURVEYORS AS CITED BELOW. THE ORIGINAL AND SUBSEQUENT SURVEYOR NOTES ARE ON FILE IN THE HARRISON COUNTY SURVEYOR'S OFFICE.

PRIOR TO PERFORMING THIS SURVEY, I REVIEWED THE AVAILABLE ORIGINAL, SUBSEQUENT AND PRIVATE SURVEY NOTES. I RESEARCHED PERTINENT DEEDS AND ADJOINING DEEDS. I CONTACTED ADJOINING LAND OWNERS, CONSULTED WITH THE HARRISON COUNTY SURVEYOR AND OTHER LOCAL SURVEYORS FOR INFORMATION PERTAINING TO THE LOCATION OF CORNERS NEEDED TO PERFORM THIS SURVEY.

THE CORNERS RECOVERED, RESTORED AND PERPETUATED BY THIS SURVEY ARE MARKED IN THE LEGEND. THE BEARING BETWEEN MONUMENTS IS GRID NORTH AS DETERMINED BY GPS SURVEYS.

HORIZONTAL AND VERTICAL CONTROLS FOR THIS SURVEY ARE BASED ON STATIC AND RTK GPS METHODS AND COORDINATES WERE CONSTRAINED TO AN NGS OPUS SOLUTION POSITION, INDIANA STATE PLANE COORDINATE SYSTEM, EAST ZONE, 1983 (2012) DATUM, FOR AN ON-SITE GPS BASE STATION. THIS IS A RETRACEMENT "RURAL CLASS SURVEY" AS DEFINED BY 865 IAC 1-12 SECTION 20, PARAGRAPH 3 (e-3) AND THE FIELD WORK IS WITHIN THE "RELATIVE POSITIONAL ACCURACY" SPECIFICATIONS CITED THEREIN.

CONVENTIONAL TERRESTRIAL TRAVERSES WERE USED TO DETERMINE CORNER POSITIONS THAT WERE DEEMED UNSUITABLE FOR GPS OBSERVATIONS. THE POSITION OF MONUMENTS WAS VERIFIED WITH REDUNDANT MEASUREMENTS. ALL TRAVERSES WERE EITHER CLOSED TRAVERSES OR WERE CONTROLLED BY GPS SURVEY METHODS

THIS SURVEY IS BASED ON THE INDIANA STATE PLANE COORDINATE SYSTEM, EAST ZONE, 1983 (2012) DATUM, U.S. SURVEY FOOT. THE DISTANCES SHOWN ARE SEA LEVEL GRID DISTANCES, BASED ON A COMBINED SCALE FACTOR OF 0.99994016. TO CONVERT SURVEY DISTANCES TO HORIZONTAL GROUND LEVEL DISTANCES, DIVIDE THE SURVEY DISTANCES BY THE SCALE FACTOR

CORNERS MONUMENTED AND PERPETUATED

M-5 SECTION CORNER TO SECTIONS 17, 18, 19 & 20, T-3-S, R-5-E

RESTORED CORNER POSITION PER THE STANDARD INSTRUCTIONS, FROM CORNERS RECOVERED IN ALL CARDINAL DIRECTIONS. SET #5 BY 30" STEEL PIN WITH 3/4" ALUMINUM DISK STAMPED (0.4' DEEP) TO DEPICT THE CORNER POSITION. THE MONUMENT IS IN A CRUSHED STONE DRIVEWAY ON THE NORTH SIDE LAZY CREEK ROAD, ABOUT 2'± NORTH OF A 24" CMP, NEAR A VERY OLD AND PROMINENT CULTURAL INTERSECTION. THE POSITION OF THE CORNER IS SUPPORTED BY MEASUREMENTS TO ADJACENT MONUMENTS IN ALL CARDINAL DIRECTIONS AND BY VERY OLD AND DISTINCT CULTURAL FEATURES IN THE VICINITY. CORNER ACCESSORIES ESTABLISHED:

B. OAK 30", S65°E, 38.7' TO A MAG NAIL 0.6' UP ON NE SIDE
UTILITY POLE, N72°E, 30.80' TO A MAG NAIL 0.6' UP ON S SIDE
UTILITY POLE, N86°W, 39.27' TO BOTTOM SIGN NAIL OF HCSS
38 CALIBER HOLE IN EAST END OF 24" CMP, S65°E, 15.13'

M-7 QUARTER CORNER TO SECTIONS 20 & 17, T-3-S, R-5-E

RECOVERED PINNACLE LIMESTONE WITH YELLOW HCSS, 1' NORTH PER PRIOR RECOVERY. THE STONE IS 0.5' BY 0.5' PROJECTING 1.8', WITH A SMALL "+" CUT ON TOP. THE MONUMENT WAS LEFT IN PLACE AS RECOVERED. THIS CORNER HAS A LONG LINAGE AND HAS BEEN USED BY LOCAL SURVEYORS AS THE QUARTER CORNER SINCE CIRCA 1960. THE MONUMENT IS AT A VERY OLD AND PROMINENT CULTURAL INTERSECTION. THE POSITION OF THE CORNER IS SUPPORTED BY MEASUREMENTS TO ADJACENT MONUMENTS

THE ORIGINAL GOVERNMENT SURVEYS WERE CONDUCTED BY AARON DAYTON, SURVEYOR IN NOVEMBER OF 1805. SUBSEQUENT SURVEYS WERE PERFORMED BY HARRISON COUNTY SURVEYORS AND PRIVATE SURVEYORS AS CITED BELOW. THE ORIGINAL AND SUBSEQUENT SURVEYOR NOTES ARE ON FILE IN THE HARRISON COUNTY SURVEYOR'S OFFICE.

PRIOR TO PERFORMING THIS SURVEY, I REVIEWED THE AVAILABLE ORIGINAL, SUBSEQUENT AND PRIVATE SURVEY NOTES. I RESEARCHED PERTINENT DEEDS AND ADJOINING DEEDS. I CONTACTED ADJOINING LAND OWNERS, CONSULTED WITH THE HARRISON COUNTY SURVEYOR AND OTHER LOCAL SURVEYORS FOR INFORMATION PERTAINING TO THE LOCATION OF CORNERS NEEDED TO PERFORM THIS SURVEY.

THE CORNERS RECOVERED, RESTORED AND PERPETUATED BY THIS SURVEY ARE MARKED IN THE LEGEND. THE BEARING BETWEEN MONUMENTS IS GRID NORTH AS DETERMINED BY GPS SURVEYS.

HORIZONTAL AND VERTICAL CONTROLS FOR THIS SURVEY ARE BASED ON STATIC AND RTK GPS METHODS AND COORDINATES WERE CONSTRAINED TO AN NGS OPUS SOLUTION POSITION, INDIANA STATE PLANE COORDINATE SYSTEM, EAST ZONE, 1983 (2012) DATUM, FOR AN ON-SITE GPS BASE STATION. THIS IS A RETRACEMENT "RURAL CLASS SURVEY" AS DEFINED BY 865 IAC 1-12 SECTION 20, PARAGRAPH 3 (e-3) AND THE FIELD WORK IS WITHIN THE "RELATIVE POSITIONAL ACCURACY" SPECIFICATIONS CITED THEREIN.

CONVENTIONAL TERRESTRIAL TRAVERSES WERE USED TO DETERMINE CORNER POSITIONS THAT WERE DEEMED UNSUITABLE FOR GPS OBSERVATIONS. THE POSITION OF MONUMENTS WAS VERIFIED WITH REDUNDANT MEASUREMENTS. ALL TRAVERSES WERE EITHER CLOSED TRAVERSES OR WERE CONTROLLED BY GPS SURVEY METHODS

THIS SURVEY IS BASED ON THE INDIANA STATE PLANE COORDINATE SYSTEM, EAST ZONE, 1983 (2012) DATUM, U.S. SURVEY FOOT. THE DISTANCES SHOWN ARE SEA LEVEL GRID DISTANCES, BASED ON A COMBINED SCALE FACTOR OF 0.99994016. TO CONVERT SURVEY DISTANCES TO HORIZONTAL GROUND LEVEL DISTANCES, DIVIDE THE SURVEY DISTANCES BY THE SCALE FACTOR

CORNERS MONUMENTED AND PERPETUATED

M-5 SECTION CORNER TO SECTIONS 17, 18, 19 & 20, T-3-S, R-5-E

RESTORED CORNER POSITION PER THE STANDARD INSTRUCTIONS, FROM CORNERS RECOVERED IN ALL CARDINAL DIRECTIONS. SET #5 BY 30" STEEL PIN WITH 3/4" ALUMINUM DISK STAMPED (0.4' DEEP) TO DEPICT THE CORNER POSITION. THE MONUMENT IS IN A CRUSHED STONE DRIVEWAY ON THE NORTH SIDE LAZY CREEK ROAD, ABOUT 2'± NORTH OF A 24" CMP, NEAR A VERY OLD AND PROMINENT CULTURAL INTERSECTION. THE POSITION OF THE CORNER IS SUPPORTED BY MEASUREMENTS TO ADJACENT MONUMENTS IN ALL CARDINAL DIRECTIONS AND BY VERY OLD AND DISTINCT CULTURAL FEATURES IN THE VICINITY. CORNER ACCESSORIES ESTABLISHED:

B. OAK 30", S65°E, 38.7' TO A MAG NAIL 0.6' UP ON NE SIDE
UTILITY POLE, N72°E, 30.80' TO A MAG NAIL 0.6' UP ON S SIDE
UTILITY POLE, N86°W, 39.27' TO BOTTOM SIGN NAIL OF HCSS
38 CALIBER HOLE IN EAST END OF 24" CMP, S65°E, 15.13'

M-7 QUARTER CORNER TO SECTIONS 20 & 17, T-3-S, R-5-E

RECOVERED PINNACLE LIMESTONE WITH YELLOW HCSS, 1' NORTH PER PRIOR RECOVERY. THE STONE IS 0.5' BY 0.5' PROJECTING 1.8', WITH A SMALL "+" CUT ON TOP. THE MONUMENT WAS LEFT IN PLACE AS RECOVERED. THIS CORNER HAS A LONG LINAGE AND HAS BEEN USED BY LOCAL SURVEYORS AS THE QUARTER CORNER SINCE CIRCA 1960. THE MONUMENT IS AT A VERY OLD AND PROMINENT CULTURAL INTERSECTION. THE POSITION OF THE CORNER IS SUPPORTED BY MEASUREMENTS TO ADJACENT MONUMENTS IN ALL CARDINAL DIRECTIONS AND BY VERY OLD AND DISTINCT CULTURAL FEATURES IN THE VICINITY. SEE HIGH RIDGE SUBDIVISION PLAT BOOK 3, PAGE 174. CORNER ACCESSORIES ESTABLISHED:

B. OAK 32", S47°W, 17.44' TO A MAG NAIL 0.6' UP IN N CROWN ROOT
HICKORY 8", N68°W, 9.67' TO A MAG NAIL 0.6' UP IN NE CROWN ROOT
SUGAR 8", S39°E, 40.6'

0-9

**PLAT OF SURVEY
2012 HARRISON COUNTY PERPETUATION PROJECT**

SITUATED IN SECTION 20, TOWNSHIP 3 SOUTH, RANGE 5 EAST, FRANKLIN TOWNSHIP, HARRISON,
INDIANA.

CORNERS MONUMENTED AND PERPETUATED CONTINUED

M-9 SECTION CORNER TO SECTIONS 16, 17, 20 & 21, T-3-S, R-5-E

RECOVERED ROUNDED SANDSTONE WITH A "+" CUT ON TOP, FLUSH WITH THE GROUND. THE STONE HAS A YELLOW HCSS, 0.5' WEST. THE STONE IS IN LANESVILLE CEMETERY. THE MONUMENT WAS LEFT IN PLACE AS RECOVERED. THIS CORNER HAS A LONG LINAGE AND HAS BEEN USED BY LOCAL SURVEYORS AS THE SECTION CORNER. THE POSITION OF THE CORNER IS SUPPORTED BY MEASUREMENTS TO ADJACENT MONUMENTS IN ALL CARDINAL DIRECTIONS AND BY VERY OLD AND DISTINCT CULTURAL FEATURES IN THE VICINITY. CORNER ACCESSORIES ESTABLISHED:

WEST CORNER MONUMENT BASE, SCHARES, N84°E, 20.65'
NW CORNER MONUMENT BASE, YEAGER, N2°W, 9.92'
NW CORNER MONUMENT BASE, D. W. GRESHAM, S1°W, 2.42'

O-5 QUARTER SECTION CORNER TO SECTIONS 19 & 20, T-3-S, R-5-E

RECOVERED #4 STEEL PIN WITH "T" POST ON THE WEST SIDE OF CRANDALL-LANESVILLE ROAD. THE MONUMENT IS 19'± WEST OF A CONCRETE PAVED SIDE DITCH. THE POSITION OF THE CORNER IS SUPPORTED BY MEASUREMENTS TO ADJACENT MONUMENTS IN SECTION 20 AND BY VERY OLD AND DISTINCT CULTURAL FEATURES IN THE VICINITY. SEE SURVEYS RECORDED AS INSTRUMENT #99010594 AND SURVEY BOOK 4, PAGE 94. NO CORNER ACCESSORIES ESTABLISHED THIS SURVEY.

O-9 QUARTER SECTION CORNER TO SECTIONS 20 & 21, T-3-S, R-5-E

RECOVERED LIMESTONE 0.35' BY 0.45', W/LS131 SPC ON NW SIDE AND A YELLOW HCSS, 0.5' EAST. THE MONUMENT WAS LEFT IN PLACE AS RECOVERED. THIS CORNER HAS A LONG LINAGE AND HAS BEEN USED BY LOCAL SURVEYORS AS THE QUARTER CORNER. THE POSITION OF THE CORNER IS SUPPORTED BY MEASUREMENTS TO ADJACENT MONUMENTS IN SECTION 20 AND BY VERY OLD AND DISTINCT CULTURAL FEATURES IN THE VICINITY. CORNER ACCESSORIES ESTABLISHED:

CHERRY 31", S23°E, 7.65' TO A MAG NAIL 0.5' UP ON W SIDE W/OLD HCSS
HACKBERRY 4", S82°W, 3.51' TO A MAG NAIL 0.5' UP IN S CROWN ROOT
FENCE POST, WEST, 2.4' W/HCSS

O-5 SECTION CORNER TO SECTIONS 19, 20, 29 & 30, T-3-S, R-5-E

RECOVERED SANDSTONE, 0.4' BY 0.4' PROJECTING 0.3' WITH A 1" CTP ON THE NORTH SIDE AND A YELLOW HCSS 0.7' SOUTH,, IN AN OLD N-S FENCE LINE ON THE NORTH SIDE OF A WOODS ROAD TO THE EAST. THE MONUMENT WAS LEFT IN PLACE AS RECOVERED AND A CAIRN OF ROCKS WAS PLACED AROUND THE MONUMENT. THIS CORNER HAS A LONG LINAGE AND HAS BEEN USED BY LOCAL SURVEYORS AS THE SECTION CORNER. THE POSITION OF THE CORNER IS SUPPORTED BY MEASUREMENTS TO ADJACENT MONUMENTS IN SECTION 20 AND BY VERY OLD AND DISTINCT CULTURAL FEATURES IN THE VICINITY. SEE SURVEY OF RECORD IN INSTRUMENT #99010594. CORNER ACCESSORIES ESTABLISHED:

WALNUT 18", N69°W, 68.2' TO BOTTOM NAIL OF AN OLD HCSS
SUGAR 7", EAST, 5.84' TO A MAG NAIL 0.2' UP ON S SIDE
FENCE POST, S8°E, 18.72'

O-7 QUARTER SECTION CORNER TO SECTIONS 20 & 29, T-3-S, R-5-E

RECOVERED LIMESTONE 0.5' BY 0.4' PROJECTING 0.4', WITH A #4 0.4' WEST AND AT FENCE "T". FENCE TO WEST-EAST AND NORTH. W/ YELLOW HCSS, 0.5' NORTH. THE MONUMENT WAS LEFT IN PLACE AS RECOVERED. THIS CORNER HAS A LONG LINAGE AND HAS BEEN USED BY LOCAL SURVEYORS AS THE SECTION CORNER. THE POSITION OF THE CORNER IS SUPPORTED BY MEASUREMENTS TO ADJACENT MONUMENTS IN SECTION 20 AND BY VERY OLD AND DISTINCT CULTURAL FEATURES IN THE VICINITY. SEE SURVEY RECORDED IN SURVEY BOOK 3, PAGE 239. CORNER ACCESSORIES ESTABLISHED:

FENCE CORNER 8", N49°E, 0.7' TO A MAG NAIL 0.2' UP ON NE SIDE
SUGAR 17", N4°W, 42.05'
WILLOW 4", S29°W, 8.0'
NE CORNER METAL CLAD BUILDING, S21°E, 54.5'

O-9 SECTION CORNER TO SECTIONS 20, 21, 28 & 29, T-3-S, R-5-E

RECOVERED LIMESTONE WITH YELLOW HCSS 0.3' WEST PER NORTH PER PRIOR RECOVERY. THE STONE IS 0.4' BY 0.1' PROJECTING 0.4'. THE MONUMENT WAS LEFT IN PLACE AS RECOVERED. THIS CORNER HAS A LONG LINAGE AND HAS BEEN USED BY LOCAL SURVEYORS AS THE QUARTER CORNER SINCE CIRCA 1960. THE MONUMENT IS AT A VERY OLD AND PROMINENT CULTURAL INTERSECTION. THE POSITION OF THE CORNER IS SUPPORTED BY MEASUREMENTS TO ADJACENT MONUMENTS IN ALL CARDINAL DIRECTIONS AND BY VERY OLD AND DISTINCT CULTURAL FEATURES IN THE VICINITY. SEE SURVEY RECORDED IN SURVEY BOOK 3, PAGE 239.

VICINITY. CORNER ACCESSORIES ESTABLISHED:
WEST CORNER MONUMENT BASE, SCHARES, N84°E, 20.65'
NW CORNER MONUMENT BASE, YEAGER, N2°W, 9.92'
NW CORNER MONUMENT BASE, D. W. GRESHAM, S1°W, 2.42'

Q-5 QUARTER SECTION CORNER TO SECTIONS 19 & 20, T-3-S, R-5-E

RECOVERED #4 STEEL PIN WITH "T" POST ON THE WEST SIDE OF CRANDALL-LANESVILLE ROAD. THE MONUMENT IS 19'± WEST OF A CONCRETE PAVED SIDE DITCH. THE POSITION OF THE CORNER IS SUPPORTED BY MEASUREMENTS TO ADJACENT MONUMENTS IN SECTION 20 AND BY VERY OLD AND DISTINCT CULTURAL FEATURES IN THE VICINITY. SEE SURVEYS RECORDED AS INSTRUMENT #99010594 AND SURVEY BOOK 4, PAGE 94. NO CORNER ACCESSORIES ESTABLISHED THIS SURVEY.

Q-9 QUARTER SECTION CORNER TO SECTIONS 20 & 21, T-3-S, R-5-E

RECOVERED LIMESTONE 0.35' BY 0.45', W/LS131 SPC ON NW SIDE AND A YELLOW HCSS, 0.5' EAST. THE MONUMENT WAS LEFT IN PLACE AS RECOVERED. THIS CORNER HAS A LONG LINAGE AND HAS BEEN USED BY LOCAL SURVEYORS AS THE QUARTER CORNER. THE POSITION OF THE CORNER IS SUPPORTED BY MEASUREMENTS TO ADJACENT MONUMENTS IN SECTION 20 AND BY VERY OLD AND DISTINCT CULTURAL FEATURES IN THE VICINITY. CORNER ACCESSORIES ESTABLISHED:
CHERRY 31", S23°E, 7.65' TO A MAG NAIL 0.5' UP ON W SIDE W/OLD HCSS
HACKBERRY 4", S82°W, 3.51' TO A MAG NAIL 0.5' UP IN S CROWN ROOT
FENCE POST, WEST, 2.4' W/HCSS

Q-5 SECTION CORNER TO SECTIONS 19, 20, 29 & 30, T-3-S, R-5-E

RECOVERED SANDSTONE, 0.4' BY 0.4' PROJECTING 0.3' WITH A 1" CTP ON THE NORTH SIDE AND A YELLOW HCSS 0.7' SOUTH,, IN AN OLD N-S FENCE LINE ON THE NORTH SIDE OF A WOODS ROAD TO THE EAST. THE MONUMENT WAS LEFT IN PLACE AS RECOVERED AND A CAIRN OF ROCKS WAS PLACED AROUND THE MONUMENT. THIS CORNER HAS A LONG LINAGE AND HAS BEEN USED BY LOCAL SURVEYORS AS THE SECTION CORNER. THE POSITION OF THE CORNER IS SUPPORTED BY MEASUREMENTS TO ADJACENT MONUMENTS IN SECTION 20 AND BY VERY OLD AND DISTINCT CULTURAL FEATURES IN THE VICINITY. SEE SURVEY OF RECORD IN INSTRUMENT #99010594. CORNER ACCESSORIES ESTABLISHED:
WALNUT 18", N69°W, 68.2' TO BOTTOM NAIL OF AN OLD HCSS
SUGAR 7", EAST, 5.84' TO A MAG NAIL 0.2' UP ON S SIDE
FENCE POST, S8°E, 18.72'

Q-7 QUARTER SECTION CORNER TO SECTIONS 20 & 29, T-3-S, R-5-E

RECOVERED LIMESTONE 0.5' BY 0.4' PROJECTING 0.4', WITH A #4 0.4' WEST AND AT FENCE "T". FENCE TO WEST-EAST AND NORTH. W/ YELLOW HCSS, 0.5' NORTH. THE MONUMENT WAS LEFT IN PLACE AS RECOVERED. THIS CORNER HAS A LONG LINAGE AND HAS BEEN USED BY LOCAL SURVEYORS AS THE SECTION CORNER. THE POSITION OF THE CORNER IS SUPPORTED BY MEASUREMENTS TO ADJACENT MONUMENTS IN SECTION 20 AND BY VERY OLD AND DISTINCT CULTURAL FEATURES IN THE VICINITY. SEE SURVEY RECORDED IN SURVEY BOOK 3, PAGE 239. CORNER ACCESSORIES ESTABLISHED:
FENCE CORNER 8", N49°E, 0.7' TO A MAG NAIL 0.2' UP ON NE SIDE
SUGAR 17", N4°W, 42.05'
WILLOW 4", S29°W, 8.0'
NE CORNER METAL CLAD BUILDING, S21°E, 54.5'

Q-9 SECTION CORNER TO SECTIONS 20, 21, 28 & 29, T-3-S, R-5-E

RECOVERED LIMESTONE WITH YELLOW HCSS 0.3' WEST PER NORTH PER PRIOR RECOVERY. THE STONE IS 0.4' BY 0.1' PROJECTING 0.4'. THE MONUMENT WAS LEFT IN PLACE AS RECOVERED. THIS CORNER HAS A LONG LINAGE AND HAS BEEN USED BY LOCAL SURVEYORS AS THE QUARTER CORNER SINCE CIRCA 1960. THE MONUMENT IS AT A VERY OLD AND PROMINENT CULTURAL INTERSECTION. THE POSITION OF THE CORNER IS SUPPORTED BY MEASUREMENTS TO ADJACENT MONUMENTS IN ALL CARDINAL DIRECTIONS AND BY VERY OLD AND DISTINCT CULTURAL FEATURES IN THE VICINITY. SEE SURVEY RECORDED IN SURVEY BOOK 3, PAGE 239. CORNER ACCESSORIES ESTABLISHED:
FENCE POST, N31°W, 1.5'
B. OAK 16", S12°W, 15.35'
W. OAK 16", N31°W, 21.1' TO A MAG NAIL 0.6' UP ON E SIDE
W. OAK 9", N27°E, 13.90' TO A MAG NAIL 0.3' UP ON SE SIDE W/OLD HCSS
AXLE & LS131 SPC, NORTH, 33.4'±

JOB # 20077-20

SURVEYOR'S AFFIDAVIT

0-9

I, VICTOR H. McCAULEY, PROFESSIONAL LAND SURVEYOR, AND REGISTERED BY THE LAWS OF THE STATE OF INDIANA, HEREBY CERTIFY THAT I HAVE SURVEYED THE PERIMETER OF SECTION 20, TOWNSHIP 3 SOUTH, RANGE 5 EAST, FRANKLIN TOWNSHIP, HARRISON COUNTY, INDIANA, IN ACCORDANCE WITH IAC TITLE 865 AND THE RULES FOR SURVEYS OF PUBLIC LANDS AND THE STATUTES OF THE STATE OF INDIANA, ALL TO THE BEST OF MY KNOWLEDGE AND BELIEF.

THE PLAT MAP AND SURVEY NOTES ARE AN ACCURATE REPRESENTATION OF THE CORNERS RECOVERED AND RESTORED DURING THIS SURVEY. LAST DATE OF FIELD WORK WAS NOVEMBER 22, 2012.

Vict H. M
VICTOR H. McCAULEY, INDIANA/LS# 0336

Nov. 30, 2012
DATE

DECLARATION

I AFFIRM, UNDER THE PENALTIES FOR PERJURY, THAT I HAVE TAKEN RESPONSIBLE CARE TO REDACT, EACH SOCIAL SECURITY NUMBER IN THE DOCUMENT, UNLESS REQUIRED BY LAW.

DECLARANT

VICTOR H. McCAULEY

Vict H. M
SIGNATURE OF DECLARANT

PRINTED NAME OF DECLARANT


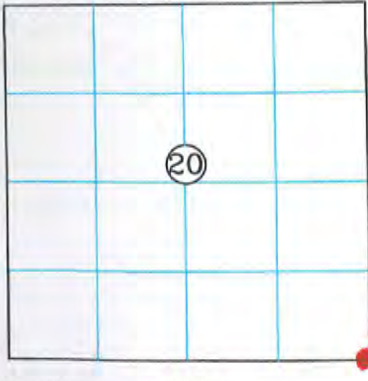
9-Q

Harrison Co. No.

T 3 S, R 5 E 2nd Prin. Mer. County Harrison State Indiana

Section Corner common to Sections 20, 21 28 and 29

EXISTING SURVEYS

No Original Government Survey Evidence Recovered	Picture
See survey recorded in Survey Book 3, Page 239 of the Harrison County, Indiana records.	
Subsequent Corner Restoration	Evidence of Subsequent Corner Restoration Found
Year surveyed _____ By _____ Where filed or recorded _____ Monument _____ (Original, concrete post, iron rod, etc...)	Year of search <u>2012</u> By <u>VHM</u> <u>Recovered limestone with yellow Harrison County Surveyor's sign 0.3' West. The stone is 0.4' by 0.1' projecting 0.4'.</u>
Bearing Trees, Reference Objects Species _____ Diameter _____ Bearing _____ Distance _____	
	Perpetuation Record Monument and accessories established. Include brief description of area. <u>The monument was left in place as recovered. The corner has a long lineage and as been used by local surveyors as the Quarter Corner since circa 1960. The monument is at a very old and prominent cultural intersection. The position of the corner is supported by measurements to adjacent monuments in all cardinal directions and by very old and distinct cultural features in the vicinity. Corner accessories established:</u> Fence Post, N 31° W, 1.5' Black Oak 16", S 12° W, 15.35' White Oak 16", N 31° W, 21.1' to a mag nail 0.6' up on East side White Oak 9" N 27° E, 13.90' to a mag nail 0.3' up on SE side with old Harrison County Surveyor's sign Axle & LS131 Steel Pin and Cap, North, 33.4'±
Signature <u>Vick H. M.</u> Date: <u>November 30, 2012</u>	N: 1085739.67 { Corner E: 239791.70 { <i>Harold K. Luster</i>

Q-9

**PLAT OF SURVEY
2012 HARRISON COUNTY PERPETUATION PROJECT**

SITUATED IN SECTION 20, TOWNSHIP 3 SOUTH, RANGE 5 EAST, FRANKLIN TOWNSHIP, HARRISON, INDIANA.

REPORT OF SURVEY

THIS SURVEY WAS PERFORMED FOR HAROLD KLINSTIVER, HARRISON COUNTY SURVEYOR AS A PERPETUATION PROJECT FOR THE CORNERS IN SECTION 20, TOWNSHIP 3 SOUTH, RANGE 5 EAST, FRANKLIN TOWNSHIP, HARRISON, INDIANA. THIS SURVEY IS A CONTINUATION OF SEVERAL PRIOR SURVEYS, IN THE SAME VICINITY, BY THIS FIRM.

THE ORIGINAL GOVERNMENT SURVEYS WERE CONDUCTED BY AARON DAYTON, SURVEYOR IN NOVEMBER OF 1805. SUBSEQUENT SURVEYS WERE PERFORMED BY HARRISON COUNTY SURVEYORS AND PRIVATE SURVEYORS AS CITED BELOW. THE ORIGINAL AND SUBSEQUENT SURVEYOR NOTES ARE ON FILE IN THE HARRISON COUNTY SURVEYOR'S OFFICE.

PRIOR TO PERFORMING THIS SURVEY, I REVIEWED THE AVAILABLE ORIGINAL, SUBSEQUENT AND PRIVATE SURVEY NOTES. I RESEARCHED PERTINENT DEEDS AND ADJOINING DEEDS. I CONTACTED ADJOINING LAND OWNERS, CONSULTED WITH THE HARRISON COUNTY SURVEYOR AND OTHER LOCAL SURVEYORS FOR INFORMATION PERTAINING TO THE LOCATION OF CORNERS NEEDED TO PERFORM THIS SURVEY.

THE CORNERS RECOVERED, RESTORED AND PERPETUATED BY THIS SURVEY ARE MARKED IN THE LEGEND. THE BEARING BETWEEN MONUMENTS IS GRID NORTH AS DETERMINED BY GPS SURVEYS.

HORIZONTAL AND VERTICAL CONTROLS FOR THIS SURVEY ARE BASED ON STATIC AND RTK GPS METHODS AND COORDINATES WERE CONSTRAINED TO AN NGS OPUS SOLUTION POSITION, INDIANA STATE PLANE COORDINATE SYSTEM, EAST ZONE, 1983 (2012) DATUM, FOR AN ON-SITE GPS BASE STATION. THIS IS A RETRACEMENT "RURAL CLASS SURVEY" AS DEFINED BY 865 IAC 1-12 SECTION 20, PARAGRAPH 3 (e-3) AND THE FIELD WORK IS WITHIN THE "RELATIVE POSITIONAL ACCURACY" SPECIFICATIONS CITED THEREIN.

CONVENTIONAL TERRESTRIAL TRAVERSES WERE USED TO DETERMINE CORNER POSITIONS THAT WERE DEEMED UNSUITABLE FOR GPS OBSERVATIONS. THE POSITION OF MONUMENTS WAS VERIFIED WITH REDUNDANT MEASUREMENTS. ALL TRAVERSES WERE EITHER CLOSED TRAVERSES OR WERE CONTROLLED BY GPS SURVEY METHODS

THIS SURVEY IS BASED ON THE INDIANA STATE PLANE COORDINATE SYSTEM, EAST ZONE, 1983 (2012) DATUM, U.S. SURVEY FOOT. THE DISTANCES SHOWN ARE SEA LEVEL GRID DISTANCES, BASED ON A COMBINED SCALE FACTOR OF 0.99994016. TO CONVERT SURVEY DISTANCES TO HORIZONTAL GROUND LEVEL DISTANCES, DIVIDE THE SURVEY DISTANCES BY THE SCALE FACTOR

CORNERS MONUMENTED AND PERPETUATED

M-5 SECTION CORNER TO SECTIONS 17, 18, 19 & 20, T-3-S, R-5-E

RESTORED CORNER POSITION PER THE STANDARD INSTRUCTIONS, FROM CORNERS RECOVERED IN ALL CARDINAL DIRECTIONS. SET #5 BY 30" STEEL PIN WITH 3/4" ALUMINUM DISK STAMPED (0.4' DEEP) TO DEPICT THE CORNER POSITION. THE MONUMENT IS IN A CRUSHED STONE DRIVEWAY ON THE NORTH SIDE LAZY CREEK ROAD, ABOUT 2'± NORTH OF A 24" CMP, NEAR A VERY OLD AND PROMINENT CULTURAL INTERSECTION. THE POSITION OF THE CORNER IS SUPPORTED BY MEASUREMENTS TO ADJACENT MONUMENTS IN ALL CARDINAL DIRECTIONS AND BY VERY OLD AND DISTINCT CULTURAL FEATURES IN THE VICINITY. CORNER ACCESSORIES ESTABLISHED:

B. OAK 30", S65°E, 38.7' TO A MAG NAIL 0.6' UP ON NE SIDE
UTILITY POLE, N72°E, 30.80' TO A MAG NAIL 0.6' UP ON S SIDE
UTILITY POLE, N86°W, 39.27' TO BOTTOM SIGN NAIL OF HCSS
38 CALIBER HOLE IN EAST END OF 24" CMP, S65°E, 15.13'

M-7 QUARTER CORNER TO SECTIONS 20 & 17, T-3-S, R-5-E

RECOVERED PINNACLE LIMESTONE WITH YELLOW HCSS, 1' NORTH PER PRIOR RECOVERY. THE STONE IS 0.5' BY 0.5' PROJECTING 1.8', WITH A SMALL "+" CUT ON TOP. THE MONUMENT WAS LEFT IN PLACE AS RECOVERED. THIS CORNER HAS A LONG LINAGE AND HAS BEEN USED BY LOCAL SURVEYORS AS THE QUARTER CORNER SINCE CIRCA 1960. THE MONUMENT IS AT A VERY OLD AND PROMINENT CULTURAL INTERSECTION. THE POSITION OF THE CORNER IS SUPPORTED BY MEASUREMENTS TO ADJACENT MONUMENTS

THE ORIGINAL GOVERNMENT SURVEYS WERE CONDUCTED BY AARON DAYTON, SURVEYOR IN NOVEMBER OF 1805. SUBSEQUENT SURVEYS WERE PERFORMED BY HARRISON COUNTY SURVEYORS AND PRIVATE SURVEYORS AS CITED BELOW. THE ORIGINAL AND SUBSEQUENT SURVEYOR NOTES ARE ON FILE IN THE HARRISON COUNTY SURVEYOR'S OFFICE.

PRIOR TO PERFORMING THIS SURVEY, I REVIEWED THE AVAILABLE ORIGINAL, SUBSEQUENT AND PRIVATE SURVEY NOTES. I RESEARCHED PERTINENT DEEDS AND ADJOINING DEEDS. I CONTACTED ADJOINING LAND OWNERS, CONSULTED WITH THE HARRISON COUNTY SURVEYOR AND OTHER LOCAL SURVEYORS FOR INFORMATION PERTAINING TO THE LOCATION OF CORNERS NEEDED TO PERFORM THIS SURVEY.

THE CORNERS RECOVERED, RESTORED AND PERPETUATED BY THIS SURVEY ARE MARKED IN THE LEGEND. THE BEARING BETWEEN MONUMENTS IS GRID NORTH AS DETERMINED BY GPS SURVEYS.

HORIZONTAL AND VERTICAL CONTROLS FOR THIS SURVEY ARE BASED ON STATIC AND RTK GPS METHODS AND COORDINATES WERE CONSTRAINED TO AN NGS OPUS SOLUTION POSITION, INDIANA STATE PLANE COORDINATE SYSTEM, EAST ZONE, 1983 (2012) DATUM, FOR AN ON-SITE GPS BASE STATION. THIS IS A RETRACEMENT "RURAL CLASS SURVEY" AS DEFINED BY 865 IAC 1-12 SECTION 20, PARAGRAPH 3 (e-3) AND THE FIELD WORK IS WITHIN THE "RELATIVE POSITIONAL ACCURACY" SPECIFICATIONS CITED THEREIN.

CONVENTIONAL TERRESTRIAL TRAVERSES WERE USED TO DETERMINE CORNER POSITIONS THAT WERE DEEMED UNSUITABLE FOR GPS OBSERVATIONS. THE POSITION OF MONUMENTS WAS VERIFIED WITH REDUNDANT MEASUREMENTS. ALL TRAVERSES WERE EITHER CLOSED TRAVERSES OR WERE CONTROLLED BY GPS SURVEY METHODS

THIS SURVEY IS BASED ON THE INDIANA STATE PLANE COORDINATE SYSTEM, EAST ZONE, 1983 (2012) DATUM, U.S. SURVEY FOOT. THE DISTANCES SHOWN ARE SEA LEVEL GRID DISTANCES, BASED ON A COMBINED SCALE FACTOR OF 0.99994016. TO CONVERT SURVEY DISTANCES TO HORIZONTAL GROUND LEVEL DISTANCES, DIVIDE THE SURVEY DISTANCES BY THE SCALE FACTOR

CORNERS MONUMENTED AND PERPETUATED

M-5 SECTION CORNER TO SECTIONS 17, 18, 19 & 20, T-3-S, R-5-E

RESTORED CORNER POSITION PER THE STANDARD INSTRUCTIONS, FROM CORNERS RECOVERED IN ALL CARDINAL DIRECTIONS. SET #5 BY 30" STEEL PIN WITH 3/4" ALUMINUM DISK STAMPED (0.4' DEEP) TO DEPICT THE CORNER POSITION. THE MONUMENT IS IN A CRUSHED STONE DRIVEWAY ON THE NORTH SIDE LAZY CREEK ROAD, ABOUT 2'± NORTH OF A 24" CMP, NEAR A VERY OLD AND PROMINENT CULTURAL INTERSECTION. THE POSITION OF THE CORNER IS SUPPORTED BY MEASUREMENTS TO ADJACENT MONUMENTS IN ALL CARDINAL DIRECTIONS AND BY VERY OLD AND DISTINCT CULTURAL FEATURES IN THE VICINITY. CORNER ACCESSORIES ESTABLISHED:

B. OAK 30", S65°E, 38.7' TO A MAG NAIL 0.6' UP ON NE SIDE
UTILITY POLE, N72°E, 30.80' TO A MAG NAIL 0.6' UP ON S SIDE
UTILITY POLE, N86°W, 39.27' TO BOTTOM SIGN NAIL OF HCSS
38 CALIBER HOLE IN EAST END OF 24" CMP, S65°E, 15.13'

M-7 QUARTER CORNER TO SECTIONS 20 & 17, T-3-S, R-5-E

RECOVERED PINNACLE LIMESTONE WITH YELLOW HCSS, 1' NORTH PER PRIOR RECOVERY. THE STONE IS 0.5' BY 0.5' PROJECTING 1.8', WITH A SMALL "+" CUT ON TOP. THE MONUMENT WAS LEFT IN PLACE AS RECOVERED. THIS CORNER HAS A LONG LINAGE AND HAS BEEN USED BY LOCAL SURVEYORS AS THE QUARTER CORNER SINCE CIRCA 1960. THE MONUMENT IS AT A VERY OLD AND PROMINENT CULTURAL INTERSECTION. THE POSITION OF THE CORNER IS SUPPORTED BY MEASUREMENTS TO ADJACENT MONUMENTS IN ALL CARDINAL DIRECTIONS AND BY VERY OLD AND DISTINCT CULTURAL FEATURES IN THE VICINITY. SEE HIGH RIDGE SUBDIVISION PLAT BOOK 3, PAGE 174. CORNER ACCESSORIES ESTABLISHED:

B. OAK 32", S47°W, 17.44' TO A MAG NAIL 0.6' UP IN N CROWN ROOT
HICKORY 8", N68°W, 9.67' TO A MAG NAIL 0.6' UP IN NE CROWN ROOT
SUGAR 8", S39°E, 40.6'

Q-9

**PLAT OF SURVEY
2012 HARRISON COUNTY PERPETUATION PROJECT**

SITUATED IN SECTION 20, TOWNSHIP 3 SOUTH, RANGE 5 EAST, FRANKLIN TOWNSHIP, HARRISON,
INDIANA.

CORNERS MONUMENTED AND PERPETUATED CONTINUED

M-9 SECTION CORNER TO SECTIONS 16, 17, 20 & 21, T-3-S, R-5-E

RECOVERED ROUNDED SANDSTONE WITH A "+" CUT ON TOP, FLUSH WITH THE GROUND. THE STONE HAS A YELLOW HCSS, 0.5' WEST. THE STONE IS IN LANESVILLE CEMETERY. THE MONUMENT WAS LEFT IN PLACE AS RECOVERED. THIS CORNER HAS A LONG LINAGE AND HAS BEEN USED BY LOCAL SURVEYORS AS THE SECTION CORNER. THE POSITION OF THE CORNER IS SUPPORTED BY MEASUREMENTS TO ADJACENT MONUMENTS IN ALL CARDINAL DIRECTIONS AND BY VERY OLD AND DISTINCT CULTURAL FEATURES IN THE VICINITY. CORNER ACCESSORIES ESTABLISHED:

WEST CORNER MONUMENT BASE, SCHARES, N84°E, 20.65'

NW CORNER MONUMENT BASE, YEAGER, N2°W, 9.92'

NW CORNER MONUMENT BASE, D. W. GRESHAM, S1°W, 2.42'

O-5 QUARTER SECTION CORNER TO SECTIONS 19 & 20, T-3-S, R-5-E

RECOVERED #4 STEEL PIN WITH "T" POST ON THE WEST SIDE OF CRANDALL-LANESVILLE ROAD. THE MONUMENT IS 19'± WEST OF A CONCRETE PAVED SIDE DITCH. THE POSITION OF THE CORNER IS SUPPORTED BY MEASUREMENTS TO ADJACENT MONUMENTS IN SECTION 20 AND BY VERY OLD AND DISTINCT CULTURAL FEATURES IN THE VICINITY. SEE SURVEYS RECORDED AS INSTRUMENT #99010594 AND SURVEY BOOK 4, PAGE 94. NO CORNER ACCESSORIES ESTABLISHED THIS SURVEY.

O-9 QUARTER SECTION CORNER TO SECTIONS 20 & 21, T-3-S, R-5-E

RECOVERED LIMESTONE 0.35' BY 0.45', W/LS131 SPC ON NW SIDE AND A YELLOW HCSS, 0.5' EAST. THE MONUMENT WAS LEFT IN PLACE AS RECOVERED. THIS CORNER HAS A LONG LINAGE AND HAS BEEN USED BY LOCAL SURVEYORS AS THE QUARTER CORNER. THE POSITION OF THE CORNER IS SUPPORTED BY MEASUREMENTS TO ADJACENT MONUMENTS IN SECTION 20 AND BY VERY OLD AND DISTINCT CULTURAL FEATURES IN THE VICINITY. CORNER ACCESSORIES ESTABLISHED:

CHERRY 31", S23°E, 7.65' TO A MAG NAIL 0.5' UP ON W SIDE W/OLD HCSS

HACKBERRY 4", S82°W, 3.51' TO A MAG NAIL 0.5' UP IN S CROWN ROOT

FENCE POST, WEST, 2.4' W/HCSS

O-5 SECTION CORNER TO SECTIONS 19, 20, 29 & 30, T-3-S, R-5-E

RECOVERED SANDSTONE, 0.4' BY 0.4' PROJECTING 0.3' WITH A 1" CTP ON THE NORTH SIDE AND A YELLOW HCSS 0.7' SOUTH,, IN AN OLD N-S FENCE LINE ON THE NORTH SIDE OF A WOODS ROAD TO THE EAST. THE MONUMENT WAS LEFT IN PLACE AS RECOVERED AND A CAIRN OF ROCKS WAS PLACED AROUND THE MONUMENT. THIS CORNER HAS A LONG LINAGE AND HAS BEEN USED BY LOCAL SURVEYORS AS THE SECTION CORNER. THE POSITION OF THE CORNER IS SUPPORTED BY MEASUREMENTS TO ADJACENT MONUMENTS IN SECTION 20 AND BY VERY OLD AND DISTINCT CULTURAL FEATURES IN THE VICINITY. SEE SURVEY OF RECORD IN INSTRUMENT #99010594. CORNER ACCESSORIES ESTABLISHED:

WALNUT 18", N69°W, 68.2' TO BOTTOM NAIL OF AN OLD HCSS

SUGAR 7", EAST, 5.84' TO A MAG NAIL 0.2' UP ON S SIDE

FENCE POST, S8°E, 18.72'

O-7 QUARTER SECTION CORNER TO SECTIONS 20 & 29, T-3-S, R-5-E

RECOVERED LIMESTONE 0.5' BY 0.4' PROJECTING 0.4', WITH A #4 0.4' WEST AND AT FENCE "T". FENCE TO WEST-EAST AND NORTH. W/ YELLOW HCSS, 0.5' NORTH. THE MONUMENT WAS LEFT IN PLACE AS RECOVERED. THIS CORNER HAS A LONG LINAGE AND HAS BEEN USED BY LOCAL SURVEYORS AS THE SECTION CORNER. THE POSITION OF THE CORNER IS SUPPORTED BY MEASUREMENTS TO ADJACENT MONUMENTS IN SECTION 20 AND BY VERY OLD AND DISTINCT CULTURAL FEATURES IN THE VICINITY. SEE SURVEY RECORDED IN SURVEY BOOK 3, PAGE 239. CORNER ACCESSORIES ESTABLISHED:

FENCE CORNER 8", N49°E, 0.7' TO A MAG NAIL 0.2' UP ON NE SIDE

SUGAR 17", N4°W, 42.05'

WILLOW 4", S29°W, 8.0'

NE CORNER METAL CLAD BUILDING, S21°E, 54.5'

O-9 SECTION CORNER TO SECTIONS 20, 21, 28 & 29, T-3-S, R-5-E

RECOVERED LIMESTONE WITH YELLOW HCSS 0.3' WEST PER NORTH PER PRIOR RECOVERY. THE STONE IS 0.4' BY 0.1' PROJECTING 0.4'. THE MONUMENT WAS LEFT IN PLACE AS RECOVERED. THIS CORNER HAS A LONG LINAGE AND HAS BEEN USED BY LOCAL SURVEYORS AS THE QUARTER CORNER SINCE CIRCA 1960. THE MONUMENT IS AT A VERY OLD AND PROMINENT CULTURAL INTERSECTION. THE POSITION OF THE CORNER IS SUPPORTED BY MEASUREMENTS TO ADJACENT MONUMENTS IN ALL CARDINAL DIRECTIONS AND BY VERY OLD AND DISTINCT CULTURAL FEATURES IN THE VICINITY. SEE SURVEY RECORDED IN SURVEY BOOK 3, PAGE 239. CORNER ACCESSORIES ESTABLISHED:

MONUMENTS IN THE VICINITY:
VICINITY. CORNER ACCESSORIES ESTABLISHED:
WEST CORNER MONUMENT BASE, SCHARES, N84°E, 20.65'
NW CORNER MONUMENT BASE, YEAGER, N2°W, 9.92'
NW CORNER MONUMENT BASE, D. W. GRESHAM, S1°W, 2.42'

O-5 QUARTER SECTION CORNER TO SECTIONS 19 & 20, T-3-S, R-5-E

RECOVERED #4 STEEL PIN WITH "T" POST ON THE WEST SIDE OF CRANDALL-LANESVILLE ROAD. THE MONUMENT IS 19'± WEST OF A CONCRETE PAVED SIDE DITCH. THE POSITION OF THE CORNER IS SUPPORTED BY MEASUREMENTS TO ADJACENT MONUMENTS IN SECTION 20 AND BY VERY OLD AND DISTINCT CULTURAL FEATURES IN THE VICINITY. SEE SURVEYS RECORDED AS INSTRUMENT #99010594 AND SURVEY BOOK 4, PAGE 94. NO CORNER ACCESSORIES ESTABLISHED THIS SURVEY.

O-9 QUARTER SECTION CORNER TO SECTIONS 20 & 21, T-3-S, R-5-E

RECOVERED LIMESTONE 0.35' BY 0.45', W/LS131 SPC ON NW SIDE AND A YELLOW HCSS, 0.5' EAST. THE MONUMENT WAS LEFT IN PLACE AS RECOVERED. THIS CORNER HAS A LONG LINAGE AND HAS BEEN USED BY LOCAL SURVEYORS AS THE QUARTER CORNER. THE POSITION OF THE CORNER IS SUPPORTED BY MEASUREMENTS TO ADJACENT MONUMENTS IN SECTION 20 AND BY VERY OLD AND DISTINCT CULTURAL FEATURES IN THE VICINITY. CORNER ACCESSORIES ESTABLISHED:
CHERRY 31", S23°E, 7.65' TO A MAG NAIL 0.5' UP ON W SIDE W/OLD HCSS
HACKBERRY 4", S82°W, 3.51' TO A MAG NAIL 0.5' UP IN S CROWN ROOT
FENCE POST, WEST, 2.4' W/HCSS

O-5 SECTION CORNER TO SECTIONS 19, 20, 29 & 30, T-3-S, R-5-E

RECOVERED SANDSTONE, 0.4' BY 0.4' PROJECTING 0.3' WITH A 1" CTP ON THE NORTH SIDE AND A YELLOW HCSS 0.7' SOUTH,, IN AN OLD N-S FENCE LINE ON THE NORTH SIDE OF A WOODS ROAD TO THE EAST. THE MONUMENT WAS LEFT IN PLACE AS RECOVERED AND A CAIRN OF ROCKS WAS PLACED AROUND THE MONUMENT. THIS CORNER HAS A LONG LINAGE AND HAS BEEN USED BY LOCAL SURVEYORS AS THE SECTION CORNER. THE POSITION OF THE CORNER IS SUPPORTED BY MEASUREMENTS TO ADJACENT MONUMENTS IN SECTION 20 AND BY VERY OLD AND DISTINCT CULTURAL FEATURES IN THE VICINITY. SEE SURVEY OF RECORD IN INSTRUMENT #99010594. CORNER ACCESSORIES ESTABLISHED:
WALNUT 18", N69°W, 68.2' TO BOTTOM NAIL OF AN OLD HCSS
SUGAR 7", EAST, 5.84' TO A MAG NAIL 0.2' UP ON S SIDE
FENCE POST, S8°E, 18.72'

O-7 QUARTER SECTION CORNER TO SECTIONS 20 & 29, T-3-S, R-5-E

RECOVERED LIMESTONE 0.5' BY 0.4' PROJECTING 0.4', WITH A #4 0.4' WEST AND AT FENCE "T". FENCE TO WEST-EAST AND NORTH. W/ YELLOW HCSS, 0.5' NORTH. THE MONUMENT WAS LEFT IN PLACE AS RECOVERED. THIS CORNER HAS A LONG LINAGE AND HAS BEEN USED BY LOCAL SURVEYORS AS THE SECTION CORNER. THE POSITION OF THE CORNER IS SUPPORTED BY MEASUREMENTS TO ADJACENT MONUMENTS IN SECTION 20 AND BY VERY OLD AND DISTINCT CULTURAL FEATURES IN THE VICINITY. SEE SURVEY RECORDED IN SURVEY BOOK 3, PAGE 239. CORNER ACCESSORIES ESTABLISHED:
FENCE CORNER 8", N49°E, 0.7' TO A MAG NAIL 0.2' UP ON NE SIDE
SUGAR 17", N4°W, 42.05'
WILLOW 4", S29°W, 8.0'
NE CORNER METAL CLAD BUILDING, S21°E, 54.5'

O-9 SECTION CORNER TO SECTIONS 20, 21, 28 & 29, T-3-S, R-5-E

RECOVERED LIMESTONE WITH YELLOW HCSS 0.3' WEST PER NORTH PER PRIOR RECOVERY. THE STONE IS 0.4' BY 0.1' PROJECTING 0.4'. THE MONUMENT WAS LEFT IN PLACE AS RECOVERED. THIS CORNER HAS A LONG LINAGE AND HAS BEEN USED BY LOCAL SURVEYORS AS THE QUARTER CORNER SINCE CIRCA 1960. THE MONUMENT IS AT A VERY OLD AND PROMINENT CULTURAL INTERSECTION. THE POSITION OF THE CORNER IS SUPPORTED BY MEASUREMENTS TO ADJACENT MONUMENTS IN ALL CARDINAL DIRECTIONS AND BY VERY OLD AND DISTINCT CULTURAL FEATURES IN THE VICINITY. SEE SURVEY RECORDED IN SURVEY BOOK 3, PAGE 239. CORNER ACCESSORIES ESTABLISHED:
FENCE POST, N31°W, 1.5'
B. OAK 16", S12°W, 15.35'
W. OAK 16", N31°W, 21.1' TO A MAG NAIL 0.6' UP ON E SIDE
W. OAK 9", N27°E, 13.90' TO A MAG NAIL 0.3' UP ON SE SIDE W/OLD HCSS
AXLE & LS131 SPC, NORTH, 33.4'±

JOB # 20077-20

Q-9

SURVEYOR'S AFFIDAVIT

I, VICTOR H. McCAULEY, PROFESSIONAL LAND SURVEYOR, AND REGISTERED BY THE LAWS OF THE STATE OF INDIANA, HEREBY CERTIFY THAT I HAVE SURVEYED THE PERIMETER OF SECTION 20, TOWNSHIP 3 SOUTH, RANGE 5 EAST, FRANKLIN TOWNSHIP, HARRISON COUNTY, INDIANA, IN ACCORDANCE WITH IAC TITLE 865 AND THE RULES FOR SURVEYS OF PUBLIC LANDS AND THE STATUTES OF THE STATE OF INDIANA, ALL TO THE BEST OF MY KNOWLEDGE AND BELIEF.

THE PLAT MAP AND SURVEY NOTES ARE AN ACCURATE REPRESENTATION OF THE CORNERS RECOVERED AND RESTORED DURING THIS SURVEY. LAST DATE OF FIELD WORK WAS NOVEMBER 22, 2012.

Vict H. M
VICTOR H. McCAULEY, INDIANA LS# 0336 Nov. 30, 2012
DATE

DECLARATION

I AFFIRM, UNDER THE PENALTIES FOR PERJURY, THAT I HAVE TAKEN RESPONSIBLE CARE TO REDACT, EACH SOCIAL SECURITY NUMBER IN THE DOCUMENT, UNLESS REQUIRED BY LAW.

DECLARANT

VICTOR H. McCAULEY

Vict H. M
SIGNATURE OF DECLARANT

PRINTED NAME OF DECLARANT

9-Q



8 1 8 8 7 9 9
Tx:4014226

INST# 201206846

BARBARA BEST
HARRISON COUNTY RECORDER

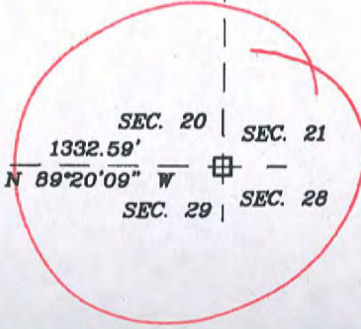
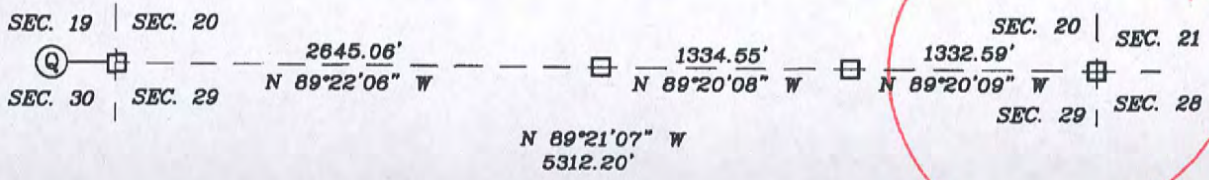
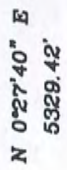
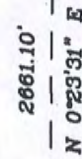
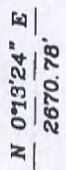
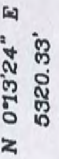
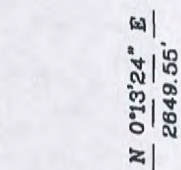
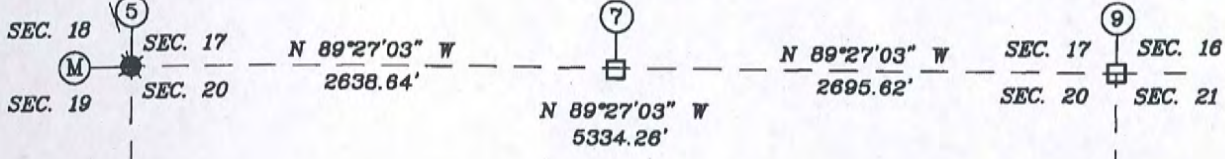
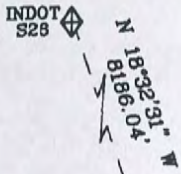
12/20/2012 3:14 PM

PAGE 1 OF 4

FOR RECORDING INFORMATION

SECTION 20,
TOWNSHIP 3 SOUTH, RANGE 5 EAST,
FRANKLIN TOWNSHIP,
HARRISON COUNTY, INDIANA

INDOT
S28



SURVEYOR'S CERTIFICATE

I, VICTOR H. McCAULEY, PROFESSIONAL LAND SURVEYOR, REGISTERED BY THE LAWS OF THE STATE OF INDIANA, HEREBY DECLARE THAT I HAVE RECOVERED, RESTORED AND PERPETUATED THE CORNERS SHOWN HEREON IN SECTION 20, TOWNSHIP 3, SOUTH, RANGE 5 EAST, FRANKLIN TOWNSHIP, HARRISON COUNTY, INDIANA IN ACCORDANCE WITH IAC TITLE 865, THE RULES FOR SURVEYS OF PUBLIC LANDS AND THE STATUTES OF THE STATE OF INDIANA, ALL TO THE BEST OF MY KNOWLEDGE AND BELIEF.



NORTH

LEGEND

- HISTORICAL STONE (SEE REPORT)
- EXISTING PIPE (SEE REPORT)
- EXISTING STEEL PIN W/CAP (SEE REPORT)
- STEEL PIN W/3/4\" ALUM. DISC STAMPED TO DEPICT CORNER POSITION (SEE REPORT)
- EXISTING STEEL PIN (SEE REPORT)
- INDOT 333 N: 1098861.16 E: 231897.40
- HARRISON COUNTY REFERENCE INDEX NUMBER

VICTOR H. McCAULEY, INDIANA LS# S0336

DATE OF SURVEY: NOV. 30, 2012

9-10

HARRISON

COUNTY

CORNER 9-II

TOWNSHIP 3

RANGE 5 EAST

2ND

PRINCIPAL MERIDIAN

LOCATION	DESCRIPTION OF		DISTANCE FROM CORNER	BEARING FROM CORNER	DATE CHECKED	CHECKED BY	FIELD BOOK	REMARKS
	MONUMENT	REFERENCE						
N.W. Corner Sec. 33	#4 Rebar with cap	1'4" Ash	11.90	S52 E	1-14-91	M.B.	#4 Pg.22	Sign Placed
		10' Maple	17.20	S72W	1-14-91	M.B.		Sign Placed
		18" Oak	22.76	N30 W	1-14-91	M.B.		Sign Placed

9-U

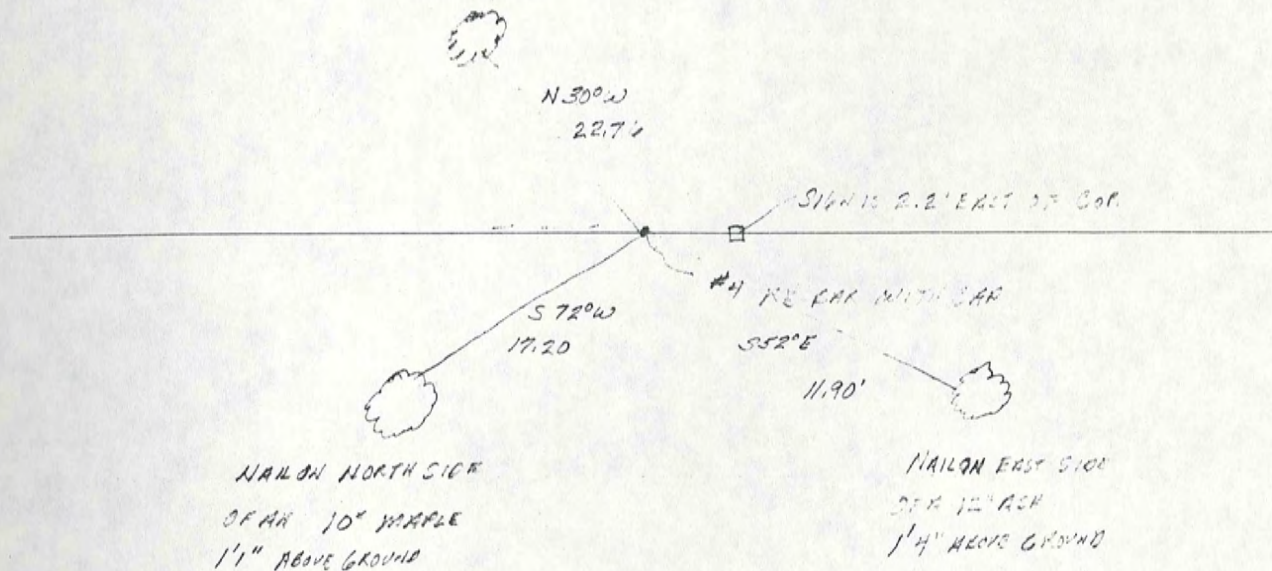
X NAIL POINT
 → GROUND SPRING
 ~ ROOT OF TREE

NAIL ON EAST SIDE
 OF A 10" OAK
 1 1/4" ABOVE GROUND



1-14-91

NW CORNER SECTION 33 T32R2E



LOCATION	DESCRIPTION OF MONUMENT		DISTANCE FROM CORNER	BEARING FROM CORNER	DATE CHECKED	CHECKED BY	FIELD BOOK	REMARKS
	MONUMENT	REFERENCE						
N.W. Corner S.E. 1/4 Section 21	Stone	7" Dogwood	10.22	N62-13-0E	11-2-83	T.B.	#2 Pg.38	Sign Place
		18" Elm	25.9	S41-55W	11-2-83	T.B.		Sign Placed
		24" Beech	29.50	N33-38W	11-2-83	T.B.		Sign Placed

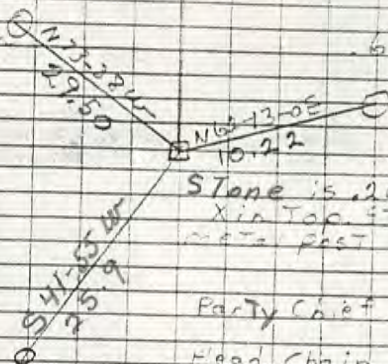
Date 11-2-83
 NUR 202, 5574
 Sect. 21, T35, R5E

All Trees have a blaze with
 a all-weather nail in middle.
 All Trees have a witness
 sign.

11-0

2.0' x Birch nail on
 north side + 2.6' up.

60' x Dogwood nail on South
 side + 1.50' up.



Stone is 20x40x50' out of ground
 X in Top. Stone is marked with
 nails east + sign on east side.

Party Chief T. Brown

Head Chain C. Clements

Rear Chain B. Fatz

1.5' x Elm nail on
 west side + 1.5' up.

11-0

Page 38

12-U

HARRISON

COUNTY

PRINCIPAL MERIDIAN

TOWNSHIP 3 SOUTH

RANGE 5 EAST

2 ND

CORNER 12-U

LOCATION	DESCRIPTION OF		DISTANCE FROM CORNER	BEARING FROM CORNER	DATE CHECKED	CHECKED BY	FIELD BOOK	REMARKS
	MONUMENT	REFERENCE						
N.W. Corner N.E. 1/4 N.E. 1/4 Section 33	Stone	8" Hickory	13.75	N79-54E	2-20-84	T.B.	#2Pg.42	Sign Placed
		6" Sassafras	9.35	S15-03W	2-20-84	T.B.		Sign Placed
		6" Hickory	2.8	S87-27W	2-20-84	T.B.		Sign Placed

All Trees have a blaze with
a aluminum nail in middle.
All Trees have a witness
sign & a red ring painted
around it.

NORTH

Party Chief T. Brown
Head Chain E. Clements
Rear Chain M. Mosses

12-U

.50' Hickory, nail on South
Side + 1.6 up.

.70' Hickory, nail on South
Side + 1.45' up.

S 27° 21' W 2.8
N 71° 24' E 13.25

.50' Sassafras, nail
on East Side + 1.30 up.

Stone is .30 x .50 x 1.0' out of ground.
Stone comes to a point. Stone is
marked with a metal post & sign on
South Side

NW, Cor

Date 2-20-24

NE 1/4, NE 1/4, T 35, R 5 E

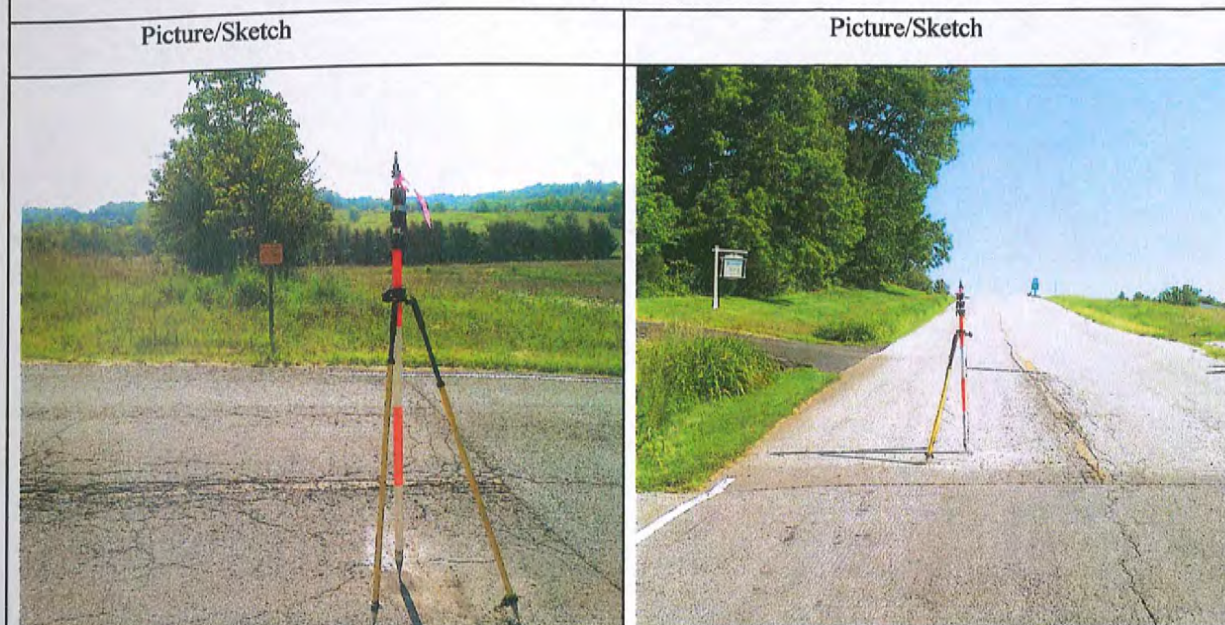
Sect. #33

Harrison County Surveyor's Reference Index Number: I-13

T 3 S R 5 E 2nd Mer., County Harrison State Indiana

Section Corner common to Sections 9, 10, 15 and 16

EXISTING SURVEYS

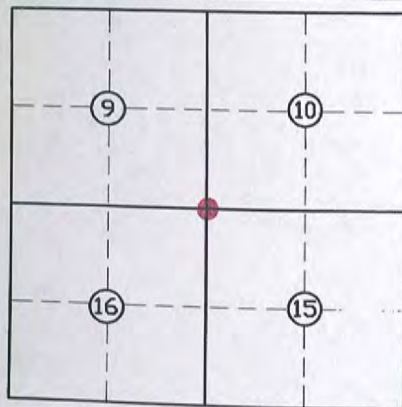


No Original Government Survey Evidence Recovered

Evidence of Subsequent Corner Restoration Found

See survey recorded in Instrument Number 200717115 of the Floyd County, Indiana records. Also, see Floyd County Surveyor's files.

Year of search 2016 By VHM
Recovered 1" mag nail set over railroad spike, 0.3' deep in Old Salem Road. Located 7' East of West edge of pavement, 30'± South of paved drive to West, prominent East-West culture line.



Perpetuation Record

Monument and accessories established. Include brief description of area. Monument left as recovered. Corner accessories established:

Gum stump, 26", N 74° W, 17.2'

Steel pin w/cap (Firm #0049), East 20.1' set a rectangular Harrison County Surveyor's sign at pin.

Telephone pedestal with a triangle Harrison County Surveyor's sign, West, 16.2'.

CMP 12", South end, S 16' W, 35.15'.

Resource Grade

N: 1096280.8

E: 245223.5

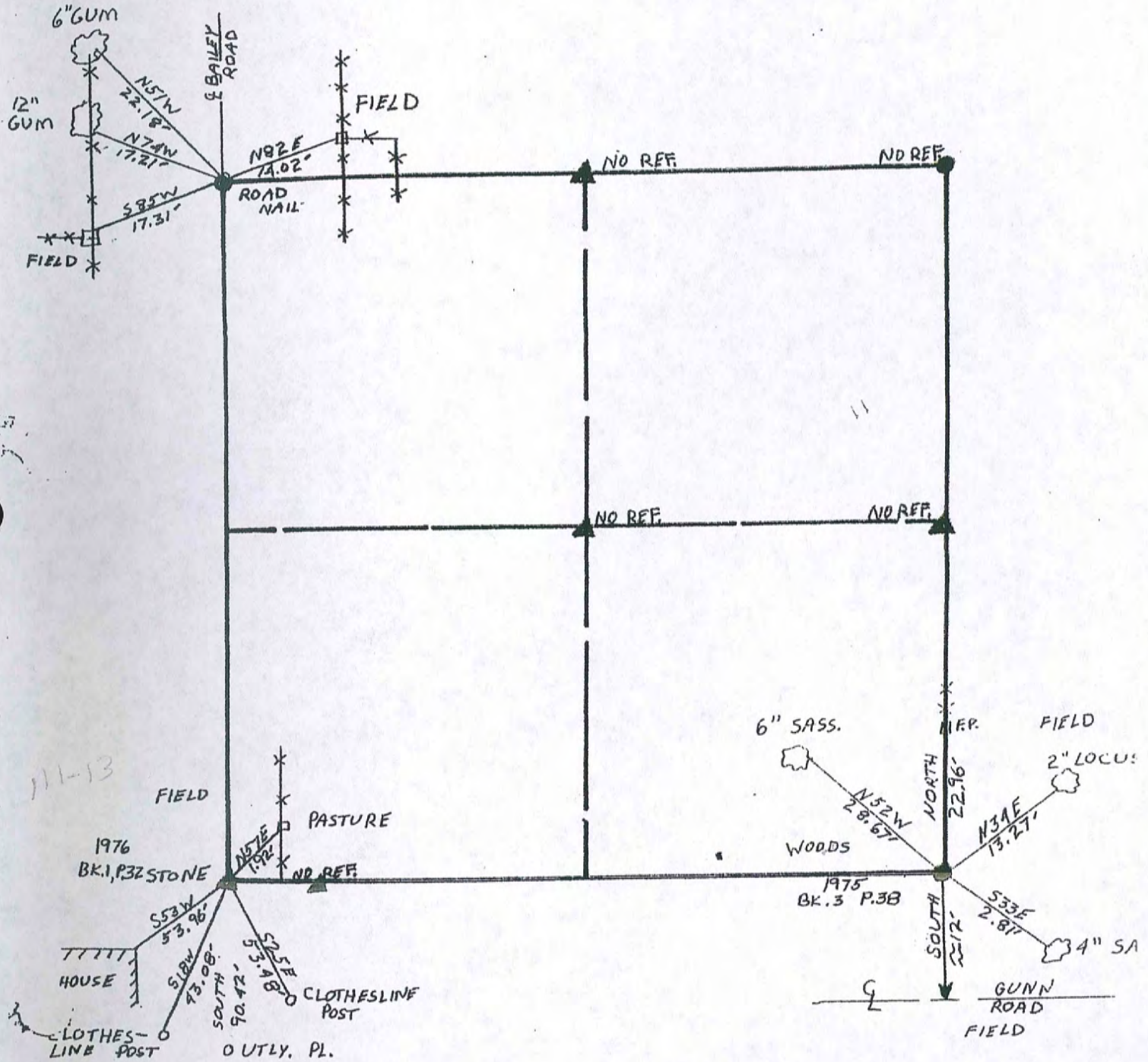
Signature Vicki W

Date: 06/23/2016

Heath R. Kline June 27 2016

15-3-5 I-13

15-3-5



Howard K. Hunter June 27 2016

LAND CORNER RECORD
(RECTANGULAR SURVEYS)

13-M

Harrison County Surveyor's Reference Index Number: M-13

T 3 S R 5 E 2nd Mer., County Harrison State Indiana

Section Corner common to Sections 15, 16, 21 and 22

EXISTING SURVEYS

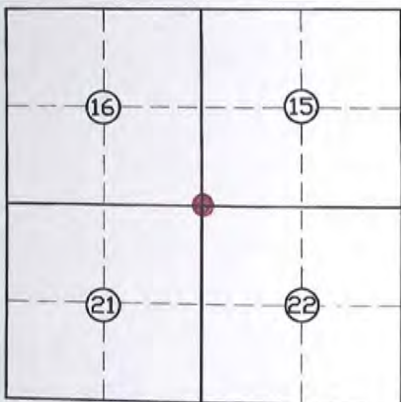


No Original Government Survey Evidence Recovered

Evidence of Subsequent Corner Restoration Found

See surveys in Harrison County Surveyor's office.

Year of search 2016 By VHM
Recovered limestone, 0.7' deep, on Northeast side of
crushed stone drive, per 1976 Floyd County Corner
Reference notes.



Perpetuation Record

Monument and accessories established. Include brief description of area. Set mag hub on South side of stone, stone is 0.3' N-S and 0.7' East-West. Corner accessories established:
Northeast corner of Garage-House, S 53° W, 59.4'.
4' x 4' post with triangle Harrison County Surveyor's sign, N 57° E, 1.92', MN + 0.2' on West side.
Utility Pole, South, 90.42' MN + 0.2' on West side.

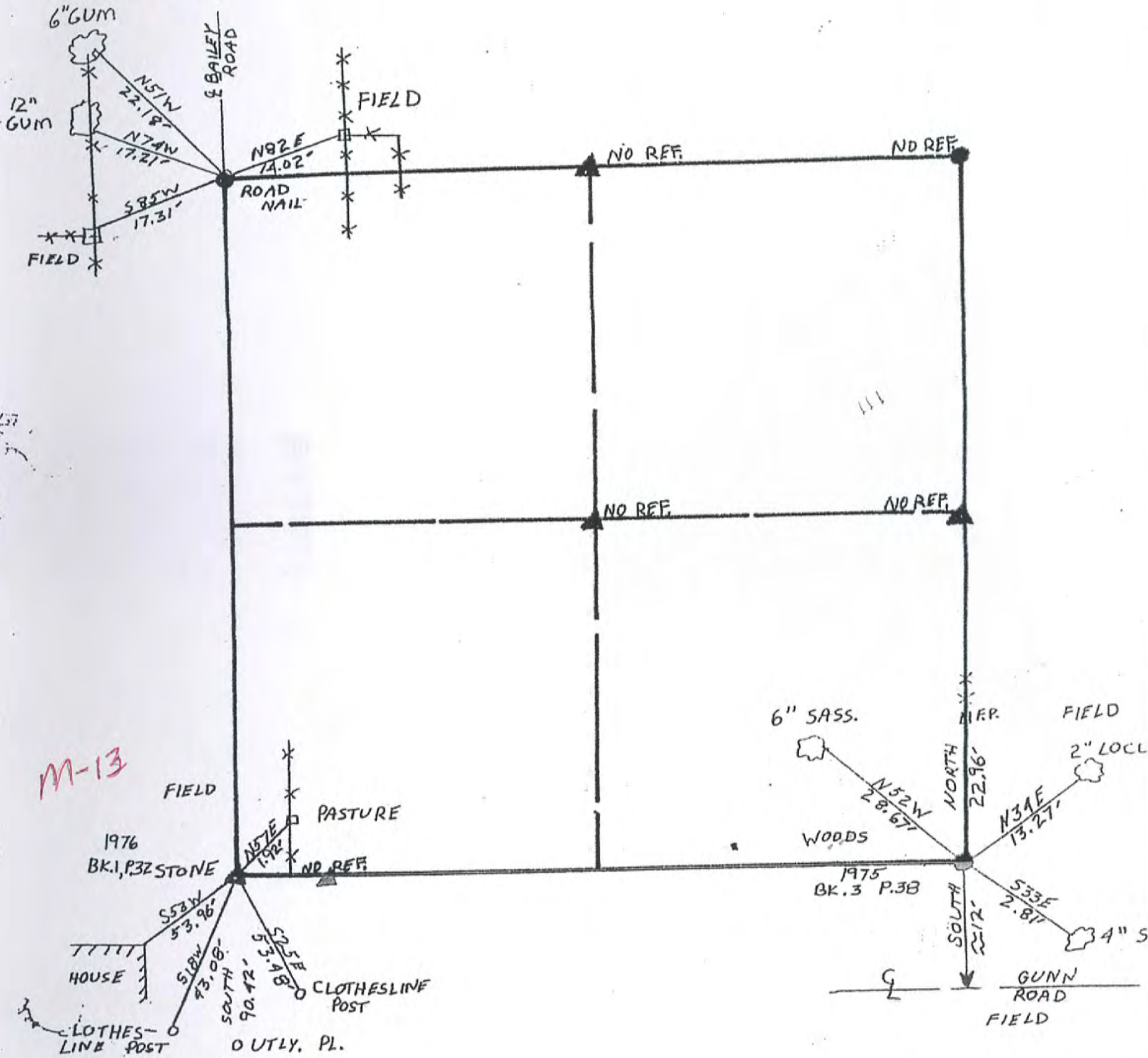
Resource Grade
 N: 1090918.5
 E: 245197.2

Signature Vit M
 Date: 06/23/2016

Harold K. Kline June 27 2016

15-3-5 I-13

15-3-5



M-13

Harold W. Crumrine
June 27 2016

HARRISON

NTY

13-Q

CORNER 13-0 TOWNSHIP 3 RANGE 5 EAST 2ND PRINCIPAL MERIDIAN

LOCATION	DESCRIPTION OF		DISTANCE FROM CORNER	BEARING FROM CORNER	DATE CHECKED	CHECKED BY	FIELD BOOK	REMARKS
	MONUMENT	REFERENCE						
NE. Cor. Sec. 28,	Stone	6" Maple	19.62	SE. 31-35-49	4-11-89	G.S.	#3 Pg53	Sign Placed
		8" Maple	28.68	SW69-21-53	4-11-89	G.S.		Sign Placed
		8" Maple	29.87	NE2-46-20	4-11-89	G.S.		Sign Placed

HARRISON

COUNTY

CORNER 13-0

TOWNSHIP 3

RANGE 5

EAST

2ND

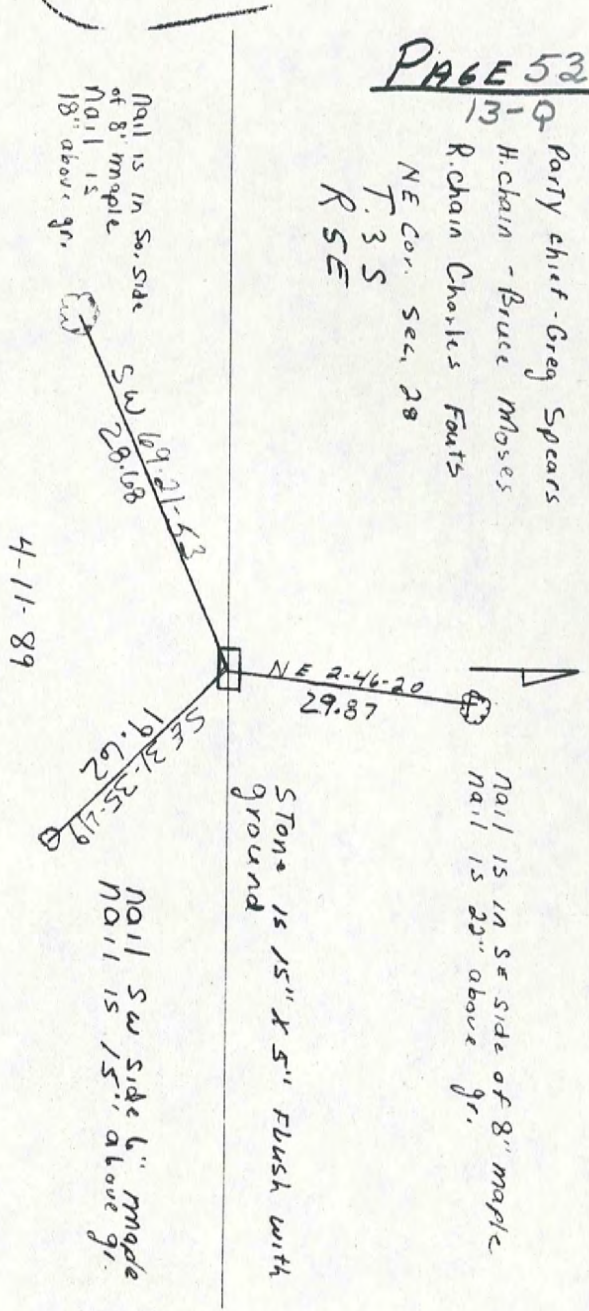
PRINCIPAL MERIDIAN

13-Q

LOCATION	DESCRIPTION OF		DISTANCE FROM CORNER	BEARING FROM CORNER	DATE CHECKED	CHECKED BY	FIELD BOOK	REMARKS
	MONUMENT	REFERENCE						
S.E. CORNER SECTION 21	STONE IS 40'x15'x50' OUT OF GROUND			STONE IS MARKED WITH POST& SIGN				
	0.60 Ø OAK		1.5' UP	EAST	2-7-94	T.B.	#4 Pg50	SIGN PLACED
	0.60' Ø oak		11.5	N77-18E				SIGN PLACED
	0.80' Ø MAPLE		23.6	S60-52W				SIGN PLACED

PAGE 52
13-Q

Party chert - Greg Spears
H. Chain - Bruce Moses
R. Chain Charles Fouts
NE Cor. Sec. 28
T. 3 S
R. 5 E



Nail is in So. side
of 8" maple
Nail is
18" above gr.

Nail is in SE side of 8" maple
Nail is 20" above gr.

Stone is 15" x 5" flush with
ground

Nail SW side 6" maple
Nail is 15" above gr.

4-11-89

13-Q

13-0

139

DIETZEN NA 085.3

2-7-94

N25-22E 13.5

S.E. cor sect 21
T 35 R 5 E

0.80' maple, nail
on south side +

2.3' up
560-524 23.6

0.60' oak, nail on
west side + 1.5' up.

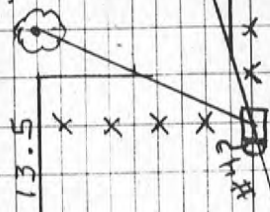
0.60' oak, nail
on south side +
2' up.

N77-18E 11.5

Stone is .40' x .15' x .50' out
of ground. Stone is marked
with a post + sign.

All trees have a witness
sign. All trees have a blaze
with a aluminum in middle

Party Chief T. Brown
Head Chain R. Mills
Rear Chain B. Moser.



13-0

DATE 2-7-94

N25-22E 13.5

0.60" oak, nail on east side + 1.5' up.

S.E. cor sects 21
T35 R5E

0.60" oak, nail on south side + 2' up.

0.80" maple, nail on south side + 2.3' up.

N77-18E 11.5

S60-52W 23.6

Stone is .40' x .15' x .50' out of ground. Stone is marked with a post + signs

All trees have a witness sign. All trees have a blage with a alluminium in middle

Party Chief T. Brown
Head Chain R. Mills
Rear Chain B. Moses

13-9 Page 50

DATE 2-14-94
Party Chief T. Brown
Head Chain R. Mills
Rear Chain B. Moses

Both Trees + Fence Cor. have a witness sign. Both Trees + Fence Cor. have a alluminium Reference nail

DATE 2-14-94

west 2.6' Stone has a full

S88-46-0W 46.4'

#4

X in Top.

STONE STONE is .50' x .40' x .10' underground. Stone is marked with post + sign

0.50" Cherry, nail on north side + 1.5' up.

S33-41-0E 7.6'

N.E. COR. SE 74
SECT. 20 T35 R5E

1.70" Cherry, nail on west side + 2.0' up.

Page 50
4-0

Both pages are 50

139 + 9-0