

HARRISON COUNTY

TOWNSHIP 3 SOUTH

RANGE 4 EAST 2 ND PRINCIPAL MERIDI

CORNER 1-M

TOWNSHIP 3 SOUTH

RANGE 4 EAST

2 ND PRINCIPAL MERIDI

LOCATION	DESCRIPTION OF		DISTANCE FROM CORNER	BEARING FROM CORNER	DATE CHECKED	CHECKED BY	FIELD BOOK	REMARKS
	MONUMENT	REFERENCE						
N.W. Corner of Section 19	Stone	72" Ash	9.85	S36-15E	4-11-85	T.B.	#3 Pg.11	Sign Placed
		48" Ash	10.00	S42-30W	4-11-85	T.B.		Sign Placed

All Trees have a blaze
with a aluminum nail in
middle. All Trees have
a witness sign.

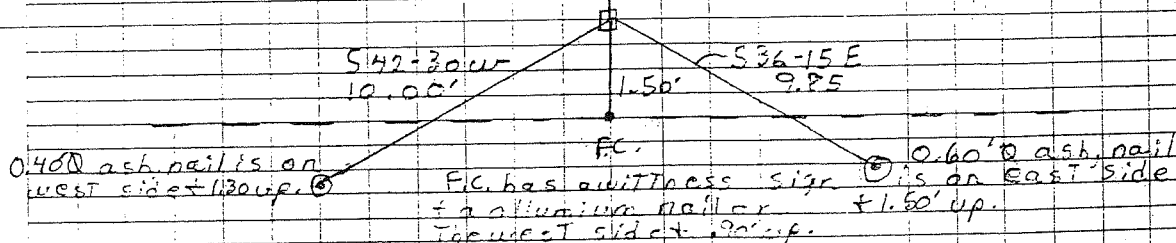
NORTH Party Chief T. Brown
Head Chain A. Clements
Foot Chain M. Riley

DATE 4-11-85

Z-M

N.W. Corner of Sect
#19 T35, R4E.

Stone is 50x20x.70 out of
ground. Stone is marked
with a metal party sign.



CORNER RECORD

HARRISON COUNTY

CORNER 1-Y TOWNSHIP 3 SOUTH RANGE 4 EAST 2 ND PRINCIPAL MERIDIAN

LOCATION	DESCRIPTION OF		DISTANCE FROM CORNER	BEARING FROM CORNER	DATE CHECKED	CHECKED BY	FIELD BOOK	REMARKS
	MONUMENT	REFERENCE						
S.W. Corner Section 31	Stone	12" Cherry Tree	22.78	S 63-15 W.	3-30-81	M.B.	#186.7	Sign Placed
		24" Hickory	52.00	S 29-25 W	3-30-81	M.B.		Sign Placed
		S.W. Corner of Equipment Shed	62.21	N. 70-55 E	3-30-81	M.B.		

1-y

1-y

DIETZGEN NO. 395-3

AN (MAG)

3-30-81

S-N COR. SEC#31

T35 R7E

PARTY CHIEF M. BROWN
HEAD CHAIN G. SPEARS
KEAR CHAIN M. MOSES

STONE IS OF LIMESTONE APPROX 8" SQ. AT TOP.
STANDING APPROX 10" HIGH WITH A 1" DIA
PIN ON WEST SIDE. PIN IS APPROX 12" HIGH.

EQUIP. SHED

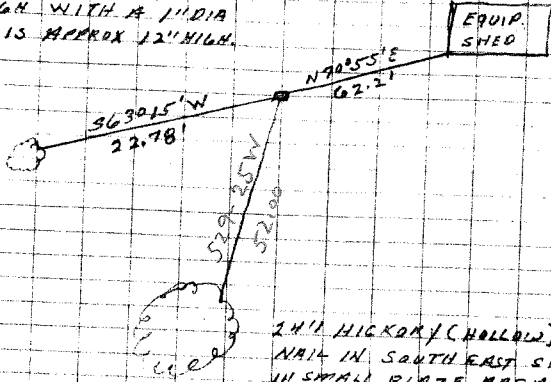
SOUTH WEST CORNER
EQUIPMENT SHED

12" CHERRY TREE
BLAZE 4 1/2' ABOVE
GROUND WITH WITNESS
SIGN NAILED IN BLAZE

DIST. NAIL IN EAST
SIDE OF TREE IN
SMALL BLAZED AREA
2 1/2' ABOVE GROUND

2 1/2" HICKORY (HOLLOW)
NAIL IN SOUTH EAST SIDE
IN SMALL BLAZE AREA
1 1/2' ABOVE GROUND

WITNESS SIGN PLACED IN
BLAZE ON NORTH SIDE OF
TREE 5' ABOVE GROUND



HARRISON COUNTY RANGE 4 EAST 2 ND PRINCIPAL MERIDIAN
 TOWNSHIP 3 SOUTH CORNER 3-U
 3-U

LOCATION	DESCRIPTION OF MONUMENT		DISTANCE FROM CORNER	BEARING FROM CORNER	DATE CHECKED	CHECKED BY	FIELD BOOK	REMARKS
	MONUMENT	REFERENCE						
S.W. Corner S.E. 1/4 Section 30	Stone	24" Maple	49.00	S86-42W	9-6-83	T.B.	#2 Pg. 34	Sign Placed
		14" Maple	38.58	S83-47W	9-6-83	T.B.		Sign Placed
		15" Oak	49.56	S45-16W	9-6-83	T.B.		Sign Placed

Stone is 10' x .50 flush with ground. Stone comes to a point. Stone is laying down on side. Stone is marked with a metal post & sign on the south side.

NORTH

FLOYD STREET

All trees have a blaze with a aluminum nail in middle. All trees have a witness sign on red ring painted round it.

Stone

16.2 11.5 11.5 11.5 11.5 9
 49.00 2.0 12.0 maple nail is on north side + 2.3 up.

Party Chief T. Brown

Head Chain A. Clements

Bear Chain B. Foltz

Date 9-6-83

S.W. Cor SE 1/4

Sect 30, T 35, R 4E

12 12 maple nail is on north side + 1.55 up.
 13 13 Oak nail is on west side + 1.70 up.

5-1
5-1

DIETZGUND 385-3

Party Chief T. Brown
 Head Chain C. Mathes
 Rear Chain S. Hughes

S.E. Cor. S1/2
 SW 1/4, SE Cor.
 Sect. 7, T35, R4E

2.00' dia MAPLE
 43.7H

Stone
 353-28-20

ELM 2.00' dia. (double tree)
 68.75

Popular .50' dia
 75.31

Stone is .50' underground, Stone is 1.00' East + 1.00' North of old
 fence cor., Stone is .50' x .75', Stone is marked with metal
 Post + sign. The maple + Popular trees have blaze marks
 at bottom. The elm tree has the blaze mark 2.40' from ground
 blaze marks have aluminum nails in middle.

5-5

DIETZEN NO. 385-3

4-13-81

S. E. cor. NE 1/4, NE 1/4, A.E. Con

sect 18, T35, R4E

Party Chief T. Brown. 1.30 dia Hickory

Head Chain C. Mathes

Rear Chain S. Hughes

16.10

353-17-10

Stone

1.30 dia Beech

4.41

85-48-10

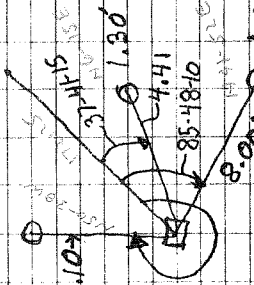
8.00

1.00 dia Sassafras

Stone has a metal post with sign

Stone is sitting .90' out of ground, Stone is 20x8.5

all trees have blaze marks at bottom, blaze marks have all um nails in middle of blaze, Trees also have witness signs



HARRISON

5-0

COPNER 5-0

TOWNSHIP 3

RANGE 4

EAST

2ND

PRINCIPAL MERIDIAN

LOCATION	DESCRIPTION OF		DISTANCE FROM CORNER	BEARING FROM CORNER	DATE CHECKED	CHECKED BY	FIELD BOOK	REMARKS
	MONUMENT	REFERENCE						
S.W. Corner Section 20,	Stone with 5" rebar	20" Maple	East Side		6-29-87	T.B.	#3 Pg. 42	Sign Placed
		11" Cherry	37.50'	N72-40-0E	6-29-87	T.B.		Sign Placed
		6" Double Hickory	East Side	27.48	6-29-87	T.B.		Sign Placed

5-0

↑ N Date 6-29-87

All trees have a blaze with a aluminum nail in middle. All trees have a witness sign.

Stone is 50X.50X1.00' out of ground. Stone is marked with a #5 rebar & metal post & signs

North 26.92

1.70' maple, nail is on East Side 1.20' up.

N72-40-0E 37.50' 0.90' cherry nail is on South Side 1.70' up.

EAST 0.50' double hickory nail 27.48' is on North Side 1.90' up.

Party Chief T. Brown

Head Chain G. Clements

Rear Chain E. Elliott

SUR con sect 20

T35, R4E

HARRISON

COUNTY

5-0

CORNER 5-U TOWNSHIP 3 SOUTH RANGE 4 EAST 2 ND PRINCIPAL MERIDIAN

LOCATION	DESCRIPTION OF		DISTANCE FROM CORNER	BEARING FROM CORNER	DATE CHECKED	CHECKED BY	FIELD BOOK	REMARKS
	MONUMENT	REFERENCE						
S.W. Cor. Sec. 29	Axle	Brace Pole	33.50	N69-17E	4-14-83	T.B.	#2 Pg27	Sign Placed
		Power Pole	48.60	S61-44E	4-14-83	T.B.		Sign Placed
		Pole	45.70	S26-33E	4-14-83	T.B.		Sign Placed

HARRISON

COUNTY

CORNER 7-K

TOWNSHIP 3

RANGE 4

EAST

2ND

PRINCIPAL MERIDIAN

M-1-K

LOCATION	DESCRIPTION OF		DISTANCE FROM CORNER	BEARING FROM CORNER	DATE CHECKED	CHECKED BY	FIELD BOOK	REMARKS
	MONUMENT	REFERENCE						
NE COR. SW 1/4 SECT. 17	STONE IS OUT OF GROUND			#4 REBAR METAL POST & SIGN				
	1.5' Maple		44.13	N66-20-0E	6-5-93	T.B.	#4Pg39	SIGN PLACED
	3' Ash		8.0	S46-52-0W				SIGN PLACED
	3.50 Sycamore		39.65	N28-55-0W				SIGN PLACED

M-K

DIETZGEN No. 385-3

Date 6-5-93

N28-55-0W 37.65

Party Chip T. Brown

Head Chain V. G. Black

Bear Chain R. Miller

2.50' of sycamore
to nail on west side
of 1.8 up from ground

1.5' maple
to nail on south
side of 2.10
up from
ground

N 66-20-0E 44.13

~~W~~ fence con.

S 46-52-0W 8.0

Stems in 1.0' x 1.0' x 2.0
cut off ground. Stone in
marked with a #4 nail & a
metal post & sign.

3' x 2' oak nail on
with side of 2.2 cup
from ground.

NE COR. SW 1/4

All Town have a witness
sign.

Section 17 T 35, R 4E

M-K

HARRISON

COUNTY

CORNER 87-M

TOWNSHIP 3

RANGE 4

EAST 2ND

PRINCIPAL MERIDIAN

47-M

LOCATION	DESCRIPTION OF		DISTANCE FROM CORNER	BEARING FROM CORNER	DATE CHECKED	CHECKED BY	FIELD BOOK	REMARKS
	MONUMENT	REFERENCE						
SE. COR. SW 1/4 SECT. 17	# 4 rebar	fence	10.0	rebar is marked with metal post & sign				
relocated corner		R/w # I-64 fence	20' .50	fence Co. Road	6-5-93	T.B.	#4 Pg38	Sign placed Sign Placed

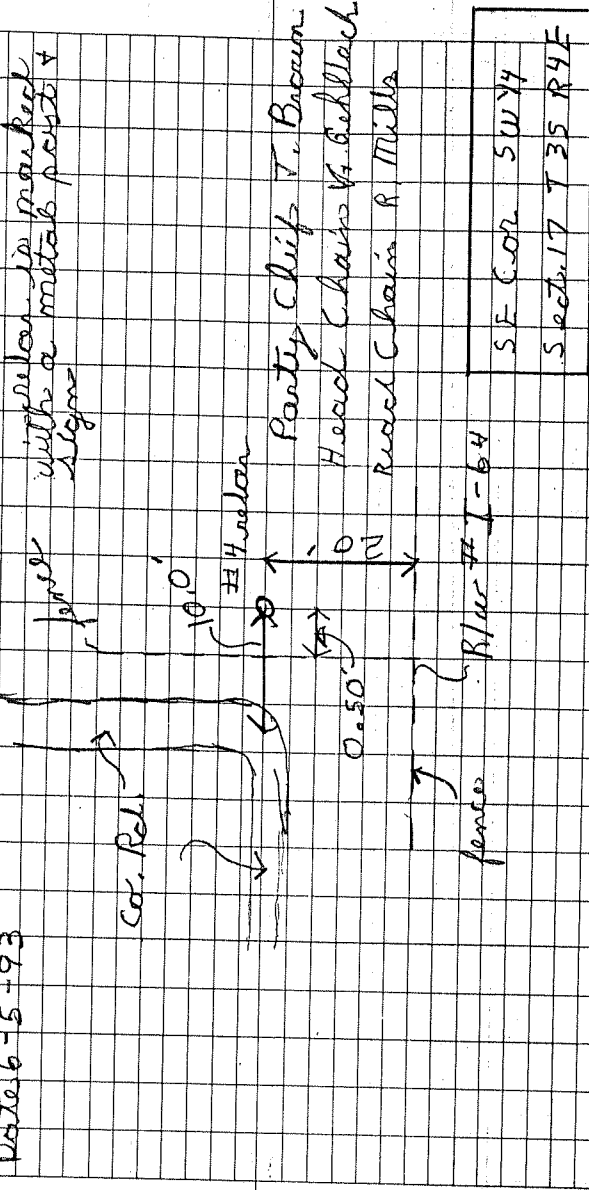
7-M

7-M

DIETZGEN 385-3

Relative corner

Date 6-5-93



S.E. COR	S.W. 1/4
SECT. 17	T. 35 R. 4E

9-E

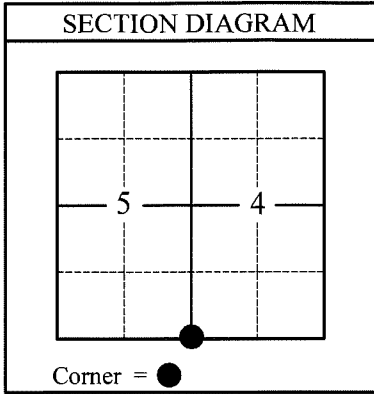
HARRISON COUNTY CORNER PERPETUATION RECORD

Section 4, Township 3 South, Range 3 East

Corner Name: Southwest Corner Index: E-9

Monument Type: 5/8" Rebar W/McCauley Cap Above/Below Grade: 0.10' Above Grade

Coordinate: Northing 1103453.14 Easting 175135.87 Datum: NAD83 IN EAST, US Survey Feet



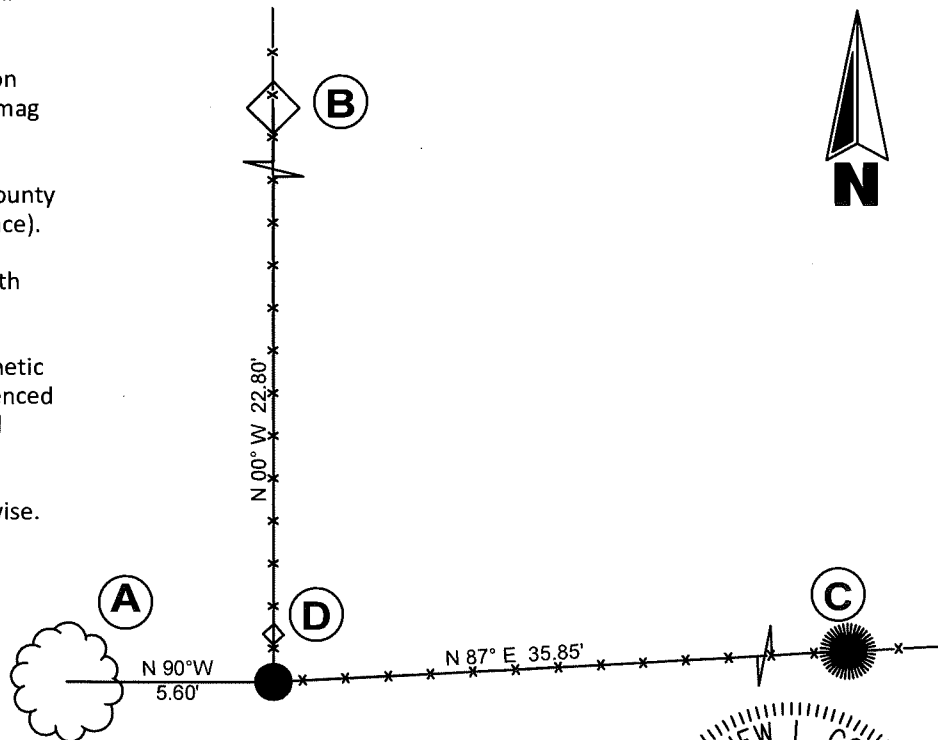
PERPETUATION RECORD:
 Southwest Corner of Section 4, Township 3 South, Range 3 East. A 5/8" rebar with a Victor H. McCauley cap was found flush. This monument is shown on a Victor H. McCauley survey dated 9/4/2020 as set during his survey dated 11/19/2003.

VICINITY REFERENCE:
 The monument falls at a fence intersection +/-20' east of an area cleared of brush and trees for a food plot. The area to the northeast is brushy with heavy undergrowth. A stone cairn has been constructed around monument.

CORNER REFERENCE

- A.) 16" Twin Bur Oak with a mag nail (north face).
- B.) 8" Cedar fence post with Harrison County Surveyor Witness Sign and mag nail (south face).
- C.) 7" Cedar Tree with a Harrison County Witness Sign and mag nail (south face).
- D.) Orange Carsonite Post 0.30' north

NOTE: The bearings to the Corner References were made with a magnetic compass to the center of the referenced object. The distances are horizontal measurements to a mag nail placed perpendicular to the line of measurement, unless noted otherwise.



Bledsoe Riggert Cooper James
BRCJ
 LAND SURVEYING • CIVIL ENGINEERING • GIS
 1800 West Main Street, Paoli, Indiana 47454
 Phone: 812-723-2900 Email: mcooper@brjcivil.com
 BRCJ Project No. 3-1550

Surveyor: *Matthew L. Cooper*
 Matthew L. Cooper
 Indiana Professional Survey No. PS20200079
 Date: June 22, 2022
 County Surveyor: Harold Klinstiver



HARRISON COUNTY CORNER PERPETUATION RECORD

Section 4, Township 3 South, Range 3 East

Corner Name: Southwest Corner Index: E-9

Monument Type: 5/8" Rebar W/McCauley Cap Above/Below Grade: 0.10' Above Grade

Coordinate: Northing 1103453.14 Easting 175135.87 Datum: NAD83 IN EAST, US Survey Feet

CORNER REFERENCE IMAGES



MONUMENT



Photo looking NORTH

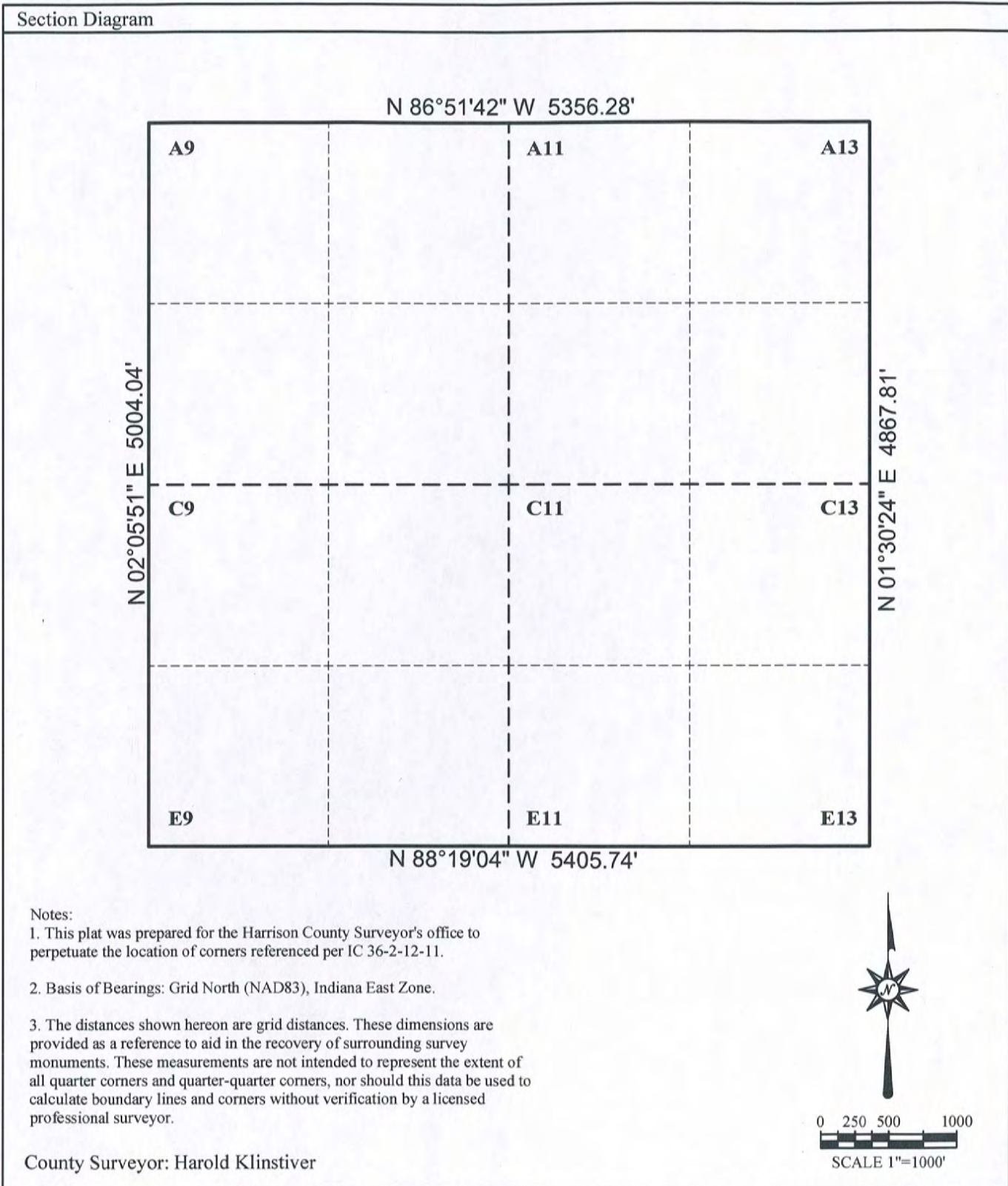


Photo looking SOUTH

9-E

HARRISON COUNTY CORNER PERPETUATION RECORD SECTION DIAGRAM

Section 4 Township 3 South Range 3 East





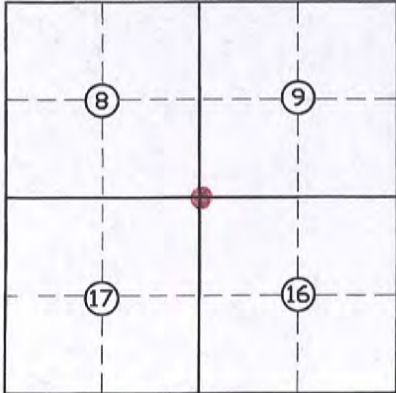
LAND CORNER RECORD
(RECTANGULAR SURVEYS)

9-I

Harrison County Surveyor's Reference Index Number: I-9

T 3 S R 4 E 2nd Mer., County Harrison State Indiana

Section Corner common to Sections 8, 9, 16 and 17

EXISTING SURVEYS	
Picture/Sketch	Picture/Sketch
	
No Original Government Survey Evidence Recovered	Evidence of Subsequent Corner Restoration Found
See surveys recorded in Legal Survey Book 3, Page 15 and Survey Book 4, Page 704.	Year of search <u>2016</u> By <u>VHM</u> <u>Recovered mag nail and road nail, 0.3' deep, in 4-way intersection of Tee Road and Zoar Church Road.</u>
	<p style="text-align: center;">Perpetuation Record</p> Monument and accessories established. Include brief description of area. <u>Replaced with #5 x 0.4' steel pin, 0.5' deep with mag hub set in concrete plug over monument. Corner accessories established:</u> <u>Utility Pole with transformer, S 43° E, 24.35', MN + 1.0' on Northeast side</u> <u>Stop sign with a triangle Harrison County Surveyor's sign, N 14° W, 34.1'.</u> <u>Flush Hydrant, N 67° E, 68.31'.</u>
Signature <u>Vit M.</u> Date: <u>06/23/2016</u>	<u>Herald R. Linsch June 27 2016</u>

HARRISON

TY

9-M

COPNER M-9

TOWNSHIP 3 S

RANGE 4 E

EAST 2ND

PRINCIPAL MERIDIAN

LOCATION	DESCRIPTION OF		DISTANCE FROM CORNER	BEARING FROM CORNER	DATE CHECKED	CHECKED BY	FIELD BOOK	REMARKS
	MONUMENT	REFERENCE						
Common Corner 16-17-20-21	RR Spike	16' Sugar	53.0'	S 1 W	2006	TOB GDB	5/48	
		13" Walnut	45.5'	N 43 E				
		17' Poplar	56.0'	N33 W				

9-M
5/48

**HARRISON COUNTY SURVEYOR
CORNER MONUMENT RECOVERY & REFERENCE RECORD**

TWNSHIP: 3S RANGE: 4E SECTION: _____ CORNER REF. LD.: M-9
DATE: 5/1/06

MONUMENT INFORMATION

LOCATION: COMMON CORNER 16-17-20-21

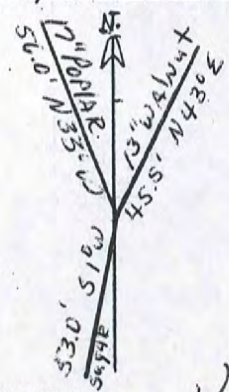
DESCRIPTION: R.R. SPIKE

ADDITIONAL DISTINGUISHING CHARACTERISTICS: _____

SIGN PLACED: () YES DATE: / /

WITNESS MARKERS

TYPE	SIGN	BLAZE	ADDITION	DESCRIPTION
1.16" Sugar	()	()	53.0'	S100°
2.13" Walnut	()	()	45.5'	N43°E
3.17" Poplar	()	()	36.0'	N33°W



	1	2	3	4	5	6	7	8	9	10	11	12	13	14	15	16	17	18	19	20	21	22	23	24
A																								
B																								
C																								
D																								
E																								
F																								
G																								
H																								
I																								
J																								
K																								
L																								
M																								
N																								
O																								
P																								
Q																								
R																								
S																								
T																								
U																								
V																								
W																								
X																								
Y																								
Z																								

RECOVERED BY: JM

DATE: 5/1/06
DATE: / /
DATE: / /

REFERENCED BY: TDB
GDB

DATE: / /
DATE: / /
DATE: / /

RECORDED IN PERPETUATION RECORDS BOOK:
BY: _____

DATE: / /

LAND CORNER RECORD
(RECTANGULAR SURVEYS)

Harrison County Surveyor's Reference Index Number: 9-U

T 3 S R 4 E 2nd Mer., County Harrison State Indiana

Section Corner common to Sections 29 and 28

EXISTING SURVEYS	
Picture/Sketch	Picture/Sketch
No Original Government Survey Evidence Recovered	Evidence of Subsequent Corner Restoration Found Year of search <u>2018</u> By <u>WPM</u> <hr/> <hr/>
<div style="border: 1px solid black; width: 150px; height: 100px; margin: 0 auto; display: flex; align-items: center; justify-content: center;"> SE Corner Section 29 </div>	<p style="text-align: center;">Existing Section Corner Notes References for: SE Corner Section 29</p> <p>Monument and accessories established. Include brief description of area. <u>Mag nail found in inner section of Grange Hall Rd and August Yokum Lane</u></p> <p><u>Ref #1= sign in north side of 8 in wood post 1.5 ft up from ground</u> <u>S 41 W, 43.9 ft</u></p> <p><u>Ref #2= sign in east side of 8 in wood post 1.5 ft up from ground</u> <u>S 67 W, 52.3 ft</u></p> <p><u>Ref #3= sign in south side of pwp 2.5 ft up from ground</u> <u>N 52 W, 91.5 ft</u></p>
Signature <u>William M. Best</u> Date: <u>10/5/18</u>	ISPCS-EZ-U.S. Survey Feet N: 1080758.79 E: 206982.18

HARRISON COUNTY CORNER PERPETUATION RECORD

Section 4, Township 3 South, Range 3 East

Corner Name: Southeast Corner Index: E-13

Monument Type: 2" mag nail Above/Below Grade: Flush

Coordinate: Northing 1103294.46 Easting 180539.28 Datum: NAD83 IN EAST, US Survey Feet

SECTION DIAGRAM



Corner = ●

PERPETUATION RECORD:

Southeast Corner of Section 4, Township 3 South, Range 3 East. A mag nail was found flush. A railroad spike was set on a Victor H. McCauley survey dated 6/28/1997 this monument is also believed to be shown on a survey by T.W. Smith dated 6/10/2005. The railroad spike was not recovered.

VICINITY REFERENCE:

The monument fall in the center of Clover Valley Road +/- 15' north of an east and west running corrugated metal pipe. A 2 story brick house is northwest of the monument +/- 250'.

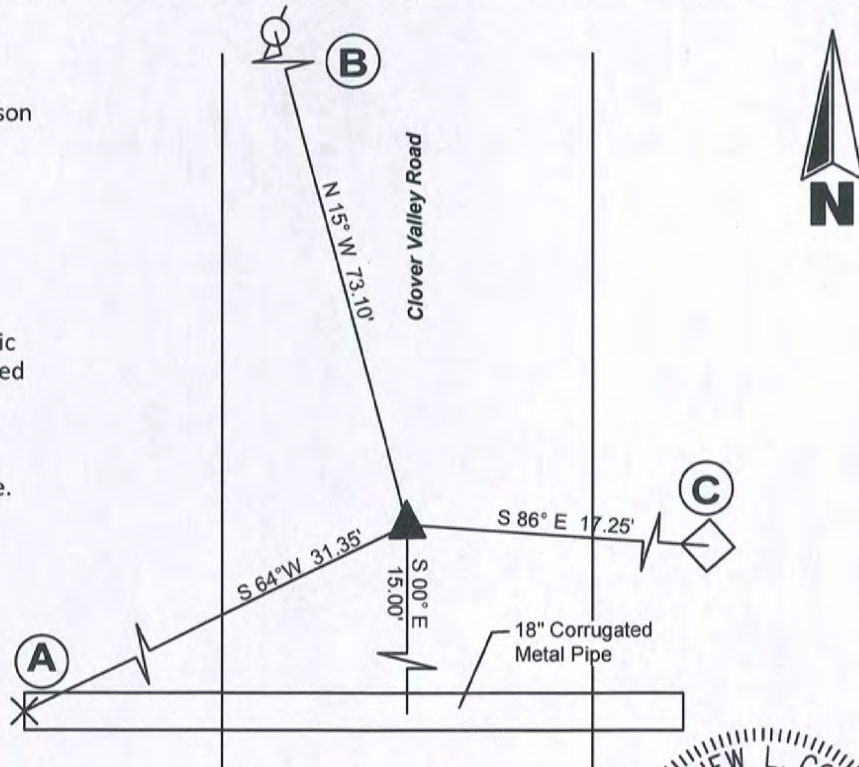
CORNER REFERENCE

A.) West opening of a 18" corrugated metal pipe running east and west.

B.) Utility Pole #D2-9P-51 with a Harrison County Witness sign and a mag nail (southeast face).

C.) U-post with a Harrison County Witness sign.

NOTE: The bearings to the Corner References were made with a magnetic compass to the center of the referenced object. The distances are horizontal measurements to a mag nail placed perpendicular to the line of measurement, unless noted otherwise.



Bledsoe Riggert Cooper James
BRCJ
 LAND SURVEYING • CIVIL ENGINEERING • GIS
 1800 West Main Street, Paoli, Indiana 47454
 Phone: 812-723-2900 Email: mcooper@brccivil.com
 BRCJ Project No. 3-1550

Surveyor:

Matthew L. Cooper

Matthew L. Cooper
 Indiana Professional Survey No. PS20200079
 Date: June 22, 2022

County Surveyor: Harold Klinstiver



HARRISON COUNTY CORNER PERPETUATION RECORD

Section 4, Township 3 South, Range 3 East

Corner Name: Southeast Corner Index: E-13

Monument Type: 2" mag nail Above/Below Grade: Flush

Coordinate: Northing 1103294.46 Easting 180539.28 Datum: NAD83 IN EAST, US Survey Feet

CORNER REFERENCE IMAGES



MONUMENTS

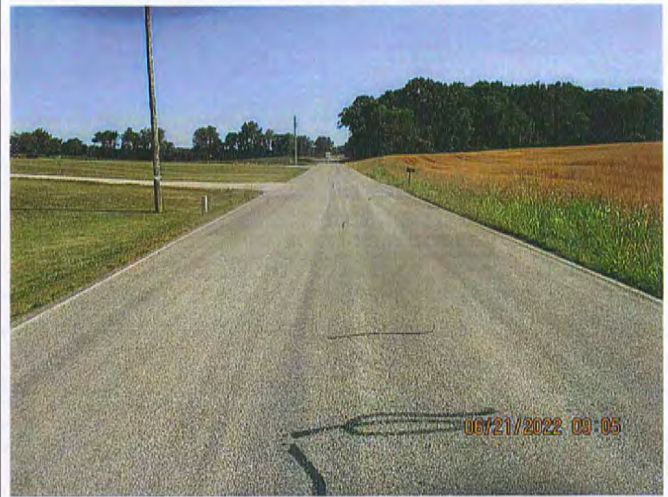


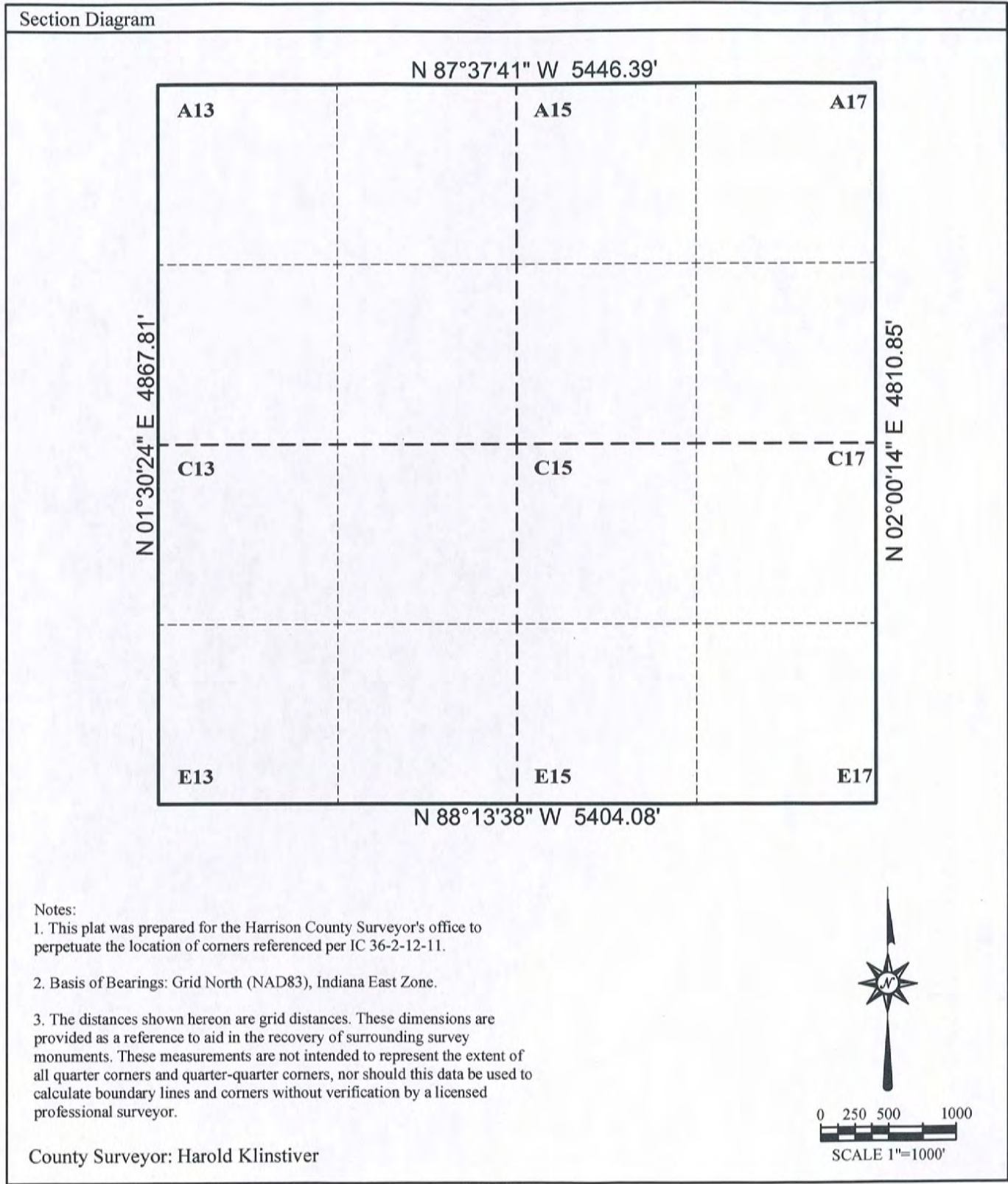
Photo looking NORTH



Photo looking SOUTH

HARRISON COUNTY CORNER PERPETUATION RECORD SECTION DIAGRAM

Section 3 Township 3 South Range 3 East



Notes:

1. This plat was prepared for the Harrison County Surveyor's office to perpetuate the location of corners referenced per IC 36-2-12-11.
2. Basis of Bearings: Grid North (NAD83), Indiana East Zone.
3. The distances shown hereon are grid distances. These dimensions are provided as a reference to aid in the recovery of surrounding survey monuments. These measurements are not intended to represent the extent of all quarter corners and quarter-quarter corners, nor should this data be used to calculate boundary lines and corners without verification by a licensed professional surveyor.

County Surveyor: Harold Klinstiver





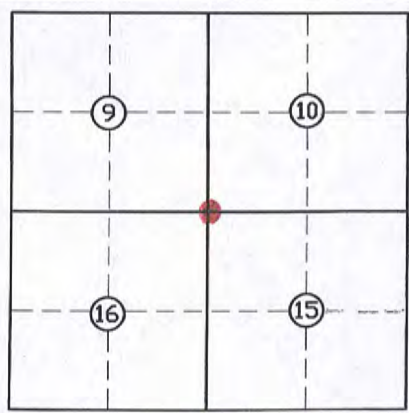
LAND CORNER RECORD
(RECTANGULAR SURVEYS)

13-I

Harrison County Surveyor's Reference Index Number: I-13

T 3 S R 4 E 2nd Mer., County Harrison State Indiana

Section Corner common to Sections 9, 10, 15 and 16

EXISTING SURVEYS	
Picture/Sketch	Picture/Sketch
	
No Original Government Survey Evidence Recovered	Evidence of Subsequent Corner Restoration Found
See surveys recorded in Legal Survey Book 3, Page 15 and Survey Book 4, Page 704.	Year of search <u>2016</u> By <u>VHM</u> Recovered <u>mag nail, 0.2' deep in Zoar Church Road 2.7' South of North edge of pavement.</u>
	<p>Perpetuation Record</p> <p>Monument and accessories established. Include brief description of area. <u>Set #5 x 0.8' steel pin, 0.6' deep with mag hub set in concrete over plug. Corner accessories established:</u></p> <p><u>Steel pin w/cap, North, 24.2'± with carsonite post,</u></p> <p><u>Utility Pole, N 69° E, 37.38' to bottom nail of triangle Harrison County Surveyor's sign,</u></p> <p><u>Cedar, 13" S 46° E, 39.33', MN + 0.7' on Northeast side.</u></p> <p><u>Utility Pole, S 58° W, 40.60' to bottom nail of a triangle Harrison County Surveyor's sign,</u></p> <p>Resource Grade N: 1096664.0 E: 212469.2</p>
Signature <u>Vik M</u>	
Date: <u>06/23/2016</u>	<u>Harold K. Kline June 27 2016</u>

HARRISON

TY

13-M

CORNER M-13 TOWNSHIP 3 S RANGE 4 E EAST 2ND PRINCIPAL MERIDIAN

LOCATION	DESCRIPTION OF		DISTANCE FROM CORNER	BEARING FROM CORNER	DATE CHECKED	CHECKED BY	FIELD BOOK	REMARKS
	MONUMENT	REFERENCE						
Common Corner 15-16-21-22	#6 Rebar w/cap	SW Corner of foundation	43.2'	N9E	2006	TOB GDB	5/49	
		Centerline Big Indian	23.2'	South				
		Util. Pole	16.3'	S 36 W				
		Util. Pole	25.7'	N 69 W				

13-M 5/19/49

HARRISON COUNTY SURVEYOR
CORNER MONUMENT RECOVERY & REFERENCE RECORD

TWNSHP: 35 RANGE: 4E SECTION: _____ CORNER REF. LD.: M-13
DATE: 5/1/06

MONUMENT INFORMATION

LOCATION: Common Corner 16-15-21-22

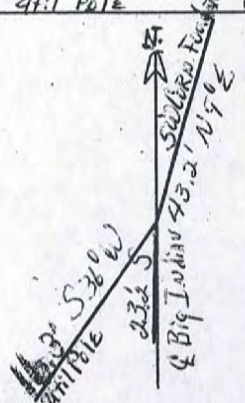
DESCRIPTION: #6 REBAR w/ CAP + CARSONITE POST

ADDITIONAL DISTINGUISHING CHARACTERISTICS: _____

SIGN PLACED: () YES DATE: 1/1/

WITNESS MARKERS

TYPE	SIGN	BLAZE	ADDITION DESCRIPTION
1. SW CORN of Foundation	()	()	43.2' N 90° E
2. Big Indian	()	()	23.2' S
3. 4ft Pole	()	()	16.3' S 36° W



	2	4	6	8	10	12	14	16	18	20	22	24
A	3	5	7	9	11	13	15	17	19	21	23	25
B	6	5	4	3	2	1						
C												
D												
E												
F												
G												
H												
I												
J												
K												
L												
M												
N												
O												
P												
Q												
R												
S												
T												
U												
V												
W												
X												
Y												
Z												

RECOVERED BY: JM DATE: 5/1/06
DATE: / /
DATE: / /

REFERENCED BY: TOB DATE: / / 06
GDB DATE: / /
DATE: / /

RECORDED IN PERPETUATION RECORDS BOOK:
BY: _____ DATE: / /

HARRISON COUNTY

15-S

CORNER 15-S TOWNSHIP 3 SOUTH RANGE 4 EAST 2 ND PRINCIPAL MERIDIAN

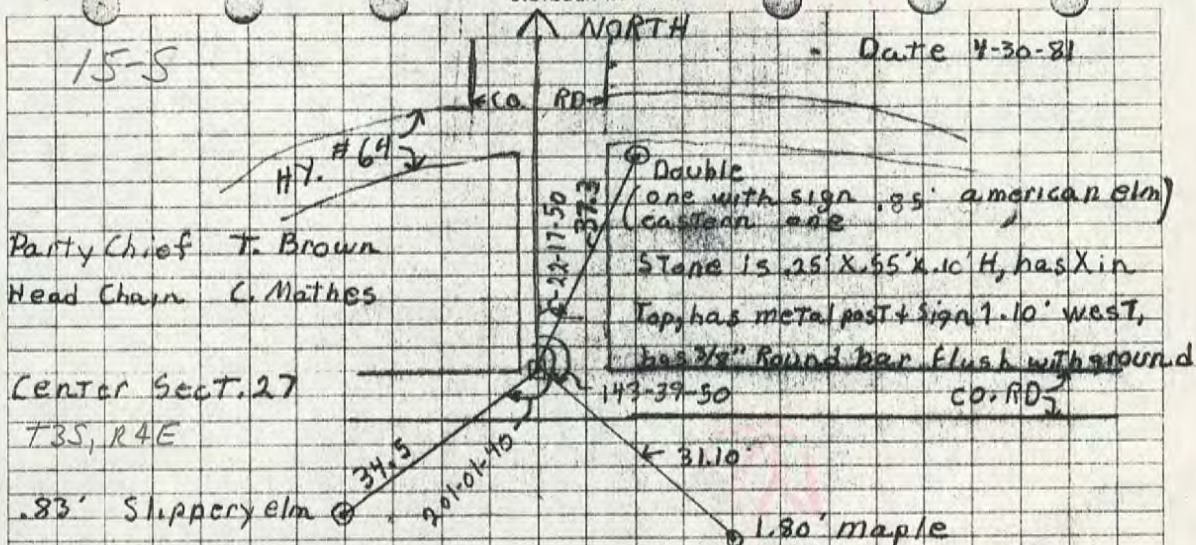
LOCATION	DESCRIPTION OF MONUMENT		DISTANCE FROM CORNER	BEARING FROM CORNER	DATE CHECKED	CHECKED BY	FIELD BOOK	REMARKS
	MONUMENT	REFERENCE						
Ctr. Section 27	Stone	10" Elm	34.50	S 21-2W	4-30-81	T.B.	#1 Pg. 21	West Edge of Gravel Drive Sign Placed
		22" Maple	31.10	S 36.40E	4-30-81	T.B.		
		DBL. Elm Ref. East One	37.30	N 22-18E	4-30-81	T.B.		

15-S

DIETZGEN NO. 386-3

15-S

Date 7-30-81



Party Chief T. Brown
Head Chain C. Mathes

Center Sect. 27
T3S, R4E

All Trees have blazes at bottom of tree, blazes have allum. nail in middle.
All Trees have witness signs, firs have a Red ring painted 6.00' off ground

1M-A

HARRISON

COUNTY

COPNER 17-A

TOWNSHIP 3

RANGE 4

EAST

2ND

PRINCIPAL MERIDIAN

LOCATION	DESCRIPTION OF		DISTANCE FROM CORNER	BEARING FROM CORNER	DATE CHECKED	CHECKED BY	FIELD BOOK	REMARKS
	MONUMENT	REFERENCE						
N.E. CORNER SECTION 3	#4 REBAR POST & SIGN	3.0' TRIPPLE MAPLE	46.1	N25-07-0W	9-09-94	T.B.	#4 PG. 49	SIGN PLACED
		1.10' MAPLE	12.70	S87-37-0W				SIGN PLACED
		2.4' MAPLE	36.0'	N87-0-0W				SIGN PLACED

14-A

DIETZEN 385.3

All Trees have a blaze with a aluminum in middle. All Trees have a witness sign

3.0' Triple maple, nail on South side 1.60 off ground

N 25-07-0W 46.1
2.4' maple, nail on South side + 2.90' off ground

DATE 9-09-94

#4 Redar + Post

#4
58.08
N 87-0-0W 36.0'

1.16' maple, nail on North side + 1.90' off ground

S 87-37-0W 12.70

#4 Redar is marked with a metal Post + Sign

ME Cor. Sect, 3
T3S R4E

Party Chief T. Brown
Head Chain R. Mills
Rear Chain D. Fowler

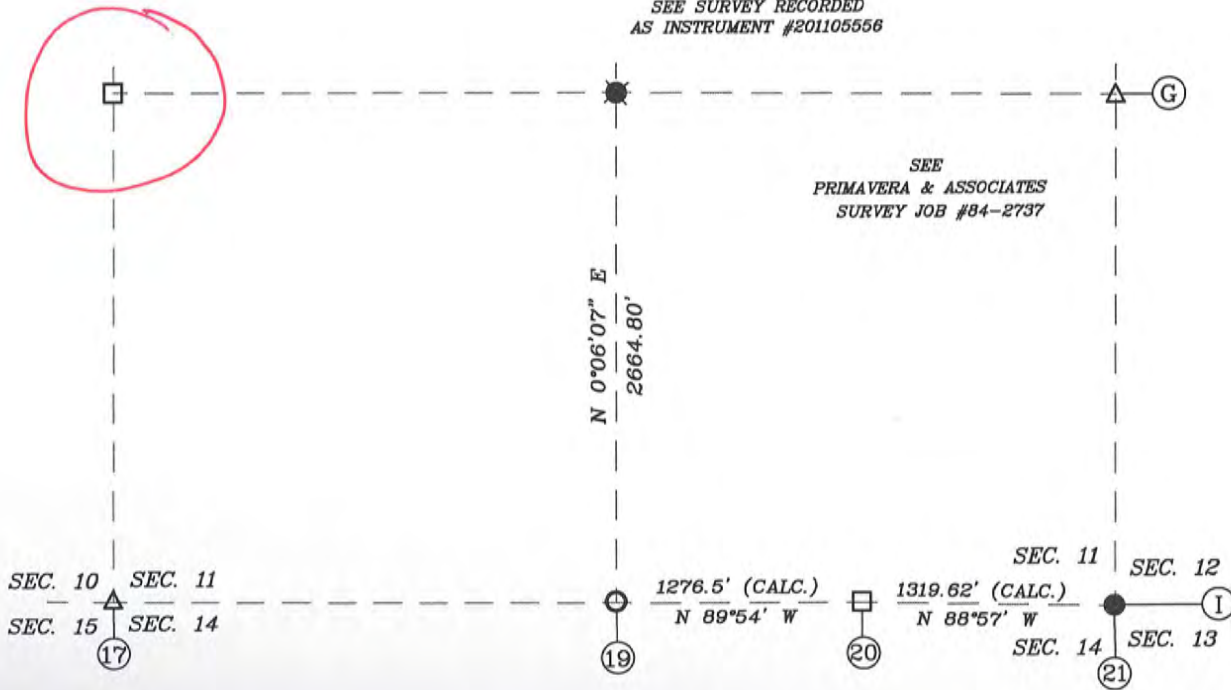
17-G

SECTION 11,
TOWNSHIP 3 SOUTH, RANGE 4 EAST,
FRANKLIN TOWNSHIP,
HARRISON COUNTY, INDIANA

FOR RECORDING INFORMATION

SEE SURVEY RECORDED
AS INSTRUMENT #201105556

SEE
PRIMAVERA & ASSOCIATES
SURVEY JOB #84-2737



SURVEYOR'S CERTIFICATE

I, VICTOR H. MCCAULEY, PROFESSIONAL LAND SURVEYOR, REGISTERED BY THE LAWS OF THE STATE OF INDIANA, HEREBY DECLARE THAT I HAVE RECOVERED, RESTORED AND PERPETUATED THE CORNERS SHOWN HEREON IN SECTION 11, TOWNSHIP 3 SOUTH, RANGE 4 EAST, FRANKLIN TOWNSHIP, HARRISON COUNTY, INDIANA IN ACCORDANCE WITH IAC TITLE 865, THE RULES FOR SURVEYS OF PUBLIC LANDS AND THE STATUTES OF THE STATE OF INDIANA, ALL TO THE BEST OF MY KNOWLEDGE AND BELIEF.

LEGEND

- HISTORICAL STONE (SEE LAND CORNER RECORD)
- EXISTING PIPE (SEE LAND CORNER RECORD)
- STEEL PIN W/3/4" ALUM. DISC STAMPED TO DEPICT CORNER POSITION (SEE LAND CORNER RECORD)
- EXISTING STEEL PIN (SEE LAND CORNER RECORD)
- △ EXISTING MAG READING
- Ⓝ HARRISON COUNTY REFERENCE INDEX NUMBER



VICTOR H. MCCAULEY, INDIANA LS# S0336

DATE OF SURVEY: DEC. 14, 2012

LAST DATE OF FIELD WORK: DEC. 13, 2012

NORTH

SURVEYOR'S REPORT-THERE ARE NO CHANGES FROM THE MATTERS RECORDED IN INSTRUMENT NUMBER 201105556 OF THE HARRISON COUNTY, INDIANA RECORDS.

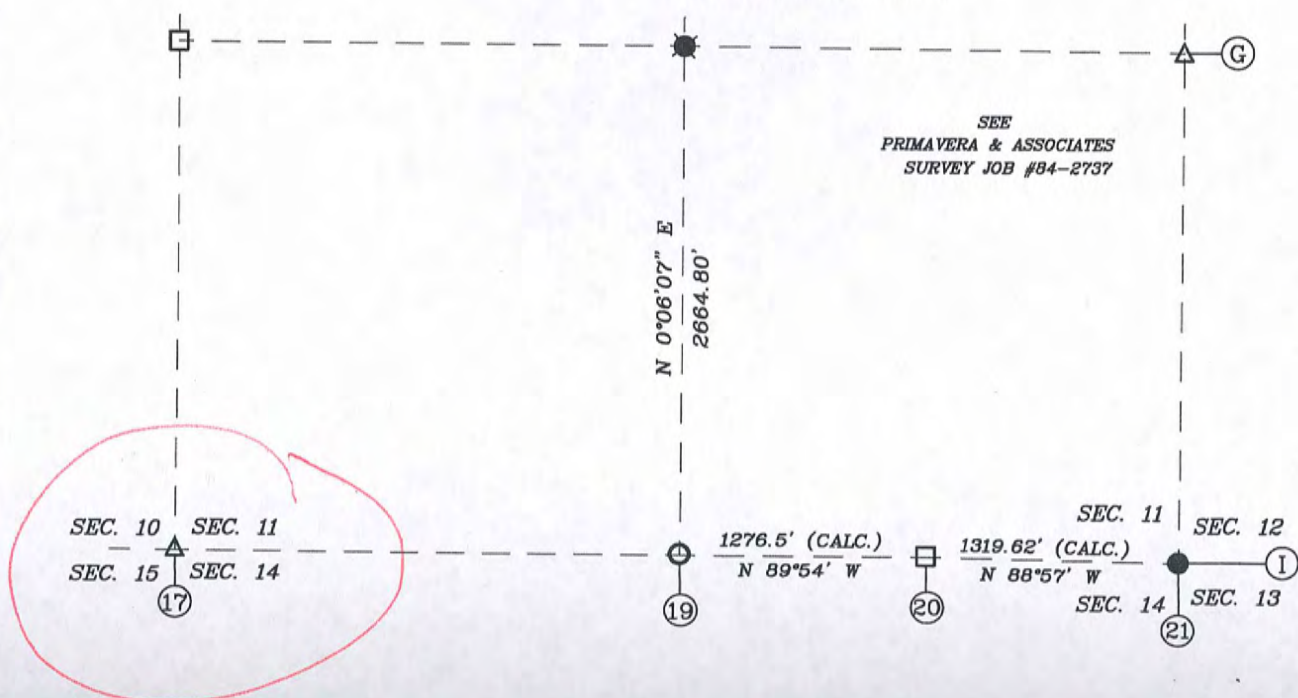
17-I

SECTION 11,
TOWNSHIP 3 SOUTH, RANGE 4 EAST,
FRANKLIN TOWNSHIP,
HARRISON COUNTY, INDIANA

FOR RECORDING INFORMATION

SEE SURVEY RECORDED
AS INSTRUMENT #201105556

SEE
PRIMAVERA & ASSOCIATES
SURVEY JOB #84-2737

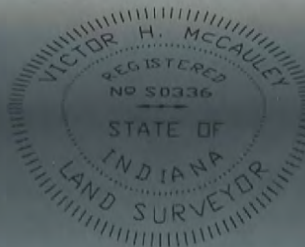


SURVEYOR'S CERTIFICATE

I, VICTOR H. MCCAULEY, PROFESSIONAL LAND SURVEYOR, REGISTERED BY THE LAWS OF THE STATE OF INDIANA, HEREBY DECLARE THAT I HAVE RECOVERED, RESTORED AND PERPETUATED THE CORNERS SHOWN HEREON IN SECTION 11, TOWNSHIP 3 SOUTH, RANGE 4 EAST, FRANKLIN TOWNSHIP, HARRISON COUNTY, INDIANA IN ACCORDANCE WITH IAC TITLE 866, THE RULES FOR SURVEYS OF PUBLIC LANDS AND THE STATUTES OF THE STATE OF INDIANA, ALL TO THE BEST OF MY KNOWLEDGE AND BELIEF.

LEGEND

- HISTORICAL STONE (SEE LAND CORNER RECORD)
- EXISTING PIPE (SEE LAND CORNER RECORD)
- STEEL PIN W/3/16" ALUM. DISC STAMPED TO DEPICT CORNER POSITION (SEE LAND CORNER RECORD)
- EXISTING STEEL PIN (SEE LAND CORNER RECORD)
- △ EXISTING MAG READING
- Ⓝ HARRISON COUNTY REFERENCE INDEX NUMBER



NORTH

Victor H. McCauley
VICTOR H. MCCAULEY, INDIANA LSA# S0336
DATE OF SURVEY: DEC. 14, 2012
LAST DATE OF FIELD WORK: DEC. 13, 2012

SURVEYOR'S REPORT—THERE ARE NO CHANGES FROM THE MATTERS RECORDED IN INSTRUMENT NUMBER 201105556 OF THE HARRISON COUNTY, INDIANA RECORDS.

DECLARATION

THIS SURVEY IS BASED ON THE INDIANA STATE PLANE

HARRISON

COUNTY

PRINCIPAL MERIDIAN

2ND

EAST

4

RANGE

TOWNSHIP 3

CORNER 17-L

17-L

LOCATION	DESCRIPTION OF		DISTANCE FROM CORNER	BEARING FROM CORNER	DATE CHECKED	CHECKED BY	FIELD BOOK	REMARKS
	MONUMENT	REFERENCE						
SW COR. NW $\frac{1}{4}$, NE $\frac{1}{4}$, SW $\frac{1}{4}$, SECT. 14	Stone is out of ground.		Has X in top marded	with a metal post & sign				
	1'.10' Maple		9.62	S30-11-0N	2-7-92	T.B.	#4 Pg37	Sign Placed
	1.0' Maple		16.15	S51-55-0N				Sign Placed
	3.4 Oak		4.70	N58-10-0N				Sign Placed

17-L

17-L

DIETZEN NO. 385-3

All Trees have a blaze with
 a aluminum nail in middle.
 All Trees have a witness
 sign.

3.4 Ø Oak, nail on west
 side 1.40 up. (S)

N 58-10-0 W 4.70' (S)

S 51-55-0 W 16.15 (S)

1.0' Ø maple, nail (S)
 on North side 1.10 up.

Party Chief T. Brown
 Head Chain B. Moses
 Rear Chain A. Clements

STONE is 0.30 x 0.15 x
 0.70 out of ground. Has
 X in top. STONE is marked
 with a metal post & sign.

Date 2-7-92

STONE
 S 30-11-0 E 9.62

1.10' Ø maple, nail on
 west side 0.90 up.

S.W. Corner NW 1/4, NE 1/4, SW 1/4
 SECT. 14, T 35, R 4E

HARRISON

COUNTY

CORNER 17-M

TOWNSHIP 3

RANGE 4

EAST

2ND

PRINCIPAL MERIDIAN

14-M

LOCATION	DESCRIPTION OF		DISTANCE FROM CORNER	BEARING FROM CORNER	DATE CHECKED	CHECKED BY	FIELD BOOK	REMARKS
	MONUMENT	REFERENCE						
NW Corner Sec. 23	Spike	NW Corner Bowman Cem.	42.2'	N 41 W	12-07	TOB	5/117	
		SW Cor. Cem.	39.88'	N 54 W				
		NE Cor. Cem.	37.9'	N 22 W				
		PWP	43.8	S 22 W				
		PWP	45.5'	S 21 E				

M-17

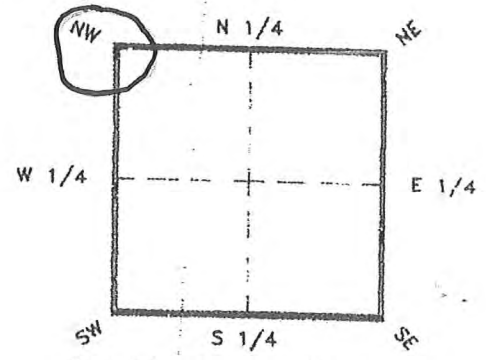
M-M

DOC. #

CERTIFIED CORNER RECORD

CORNER DESCRIPTION:

N.W. corner of Section 23
 Twp 3 S, Rge 4 E
Harrison, Franklin Twp
Harrison County(s)



MONUMENTATION DESCRIPTION:

Describe original monument and accessories, or subsequent restoration. Give sources of information. (If no attempt was made to search for the original monument and accessories, this information is not necessary.)

Spike in center line of road at intersection of Big Indian Rd and Pfrimmer Chapel Rd.

Description of corner evidence found:

State method(s) to determine corner location (lost corners only):

HORIZONTAL POSITION INFORMATION (If determined):

Latitude _____ Longitude _____

Y(Northing) _____ X(Easting) _____ Zone _____

Convergence _____ Scale factor _____

Coordinate determination (circle one): Field traverse GPS

Horizontal datum (circle one): NAD27 NAD83(1986) NAD83(1990) other (explain)

Control point(s) used for survey:

Comments:

Spike was detected at apparent location of North West Corner of Section 23. Measurements were taken from North East corner of North West Quarter and South West corner of North West Quarter.

COUNTY

HARRISON

CORNER 17-0 TOWNSHIP 3 RANGE 4 EAST 2ND PRINCIPAL MERIDIAN

14-0

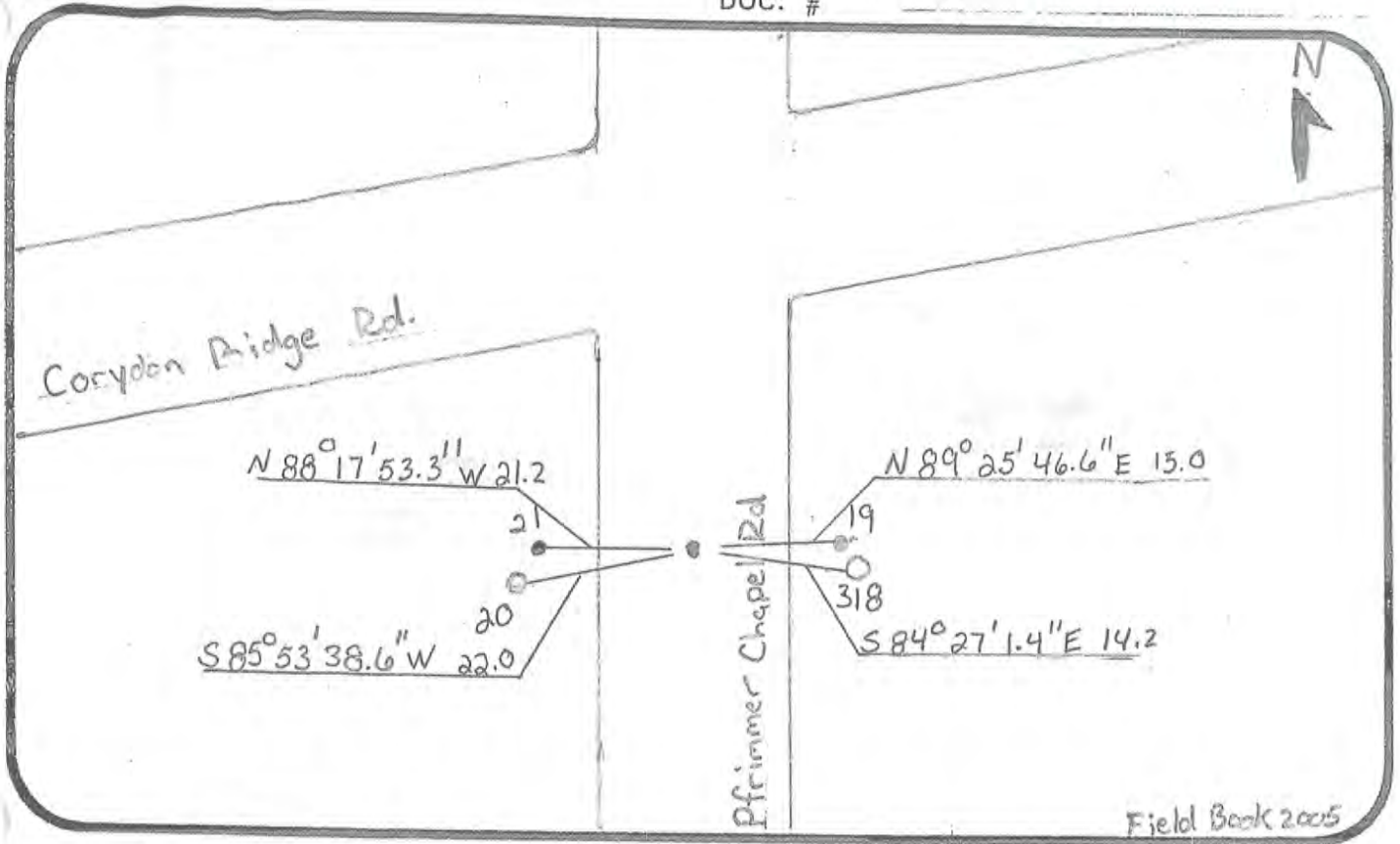
LOCATION	DESCRIPTION OF		DISTANCE FROM CORNER	BEARING FROM CORNER	DATE CHECKED	CHECKED BY	FIELD BOOK	REMARKS
	MONUMENT	REFERENCE						
W 1/4 Corner Sec. 23	Iron Pin	PWP	14.2'	S 84 E	12/07	TOB	5/116	Sign Placed
		5/8 Rebar w/cap	15'	N 89 E				
		PWP	22'	S 85 W				
		1/2 rebar	21.2'	N 88 W				

PLEASE COMPLETE IN BLACK INK OR TYPE

14-0

SKETCH:

DOC. #



All bearings and distances must be from the corner to the witness. Indicate whether corner was found, set, or replaced and show north arrow.

REFERENCE MEASUREMENTS (at least three vicinity references must be given below even if they appear on the above sketch):

Point	Description	Bearing	Distance
318.	PWP SE of SW corner of NW 1/4 sec 23	$S 84^{\circ} 27' 1.4'' E$	14.2
19.	5/8 rebar w/Booster Cap	$N 89^{\circ} 25' 46.6'' E$	15.0
20.	PWP SW of SW corner of NW 1/4 sec 23	$S 85^{\circ} 53' 38.6'' W$	22.0
21.	1/2 rebar	$N 88^{\circ} 17' 53.3'' W$	21.2

SURVEYORS CERTIFICATE: I certify the monument and accessories indicated above were field located on 12/14/2007

[Handwritten Signature]

SIGNATURE PLS. NO.
DATE 12/14/2007

Loftus and Associates
FIRM OR AGENCY

2201 North Luther Rd.
ADDRESS

Georgetown IN 47122
CITY STATE



Completeness checked by: _____
 Accepted and filed: _____ Date _____

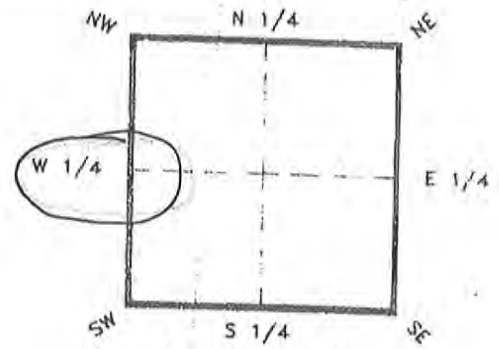
M-0

DOC. #

CERTIFIED CORNER RECORD

CORNER DESCRIPTION:

W 1/4 corner of Section 23
 Twp 3S, Rge 4E
 Harrison, Franklin Twp
 Harrison County(s)



Depict corner with ●

MONUMENTATION DESCRIPTION:

Describe original monument and accessories, or subsequent restoration. Give sources of information. (If no attempt was made to search for the original monument and accessories, this information is not necessary.)

Iron pin found in center of Pfrimmer Chapel Rd at apparent 1/4 section line.

Description of corner evidence found:

State method(s) to determine corner location (lost corners only):

HORIZONTAL POSITION INFORMATION (If determined):

Latitude _____ Longitude _____

Y(Northing) _____ X(Easting) _____ Zone _____

Convergence _____ Scale factor _____

Coordinate determination (circle one): Field traverse GPS

Horizontal datum (circle one): NAD27 NAD83(1986) NAD83(1990) other (explain)

Control point(s) used for survey:

Comments:
 Rebar found at East and west side of Road as indicated by sketch.

HARRISON

COUNTY

PRINCIPAL MERIDIAN

2ND

RANGE 4 EAST

TOWNSHIP 3

CORNER 17-Y

17-Y

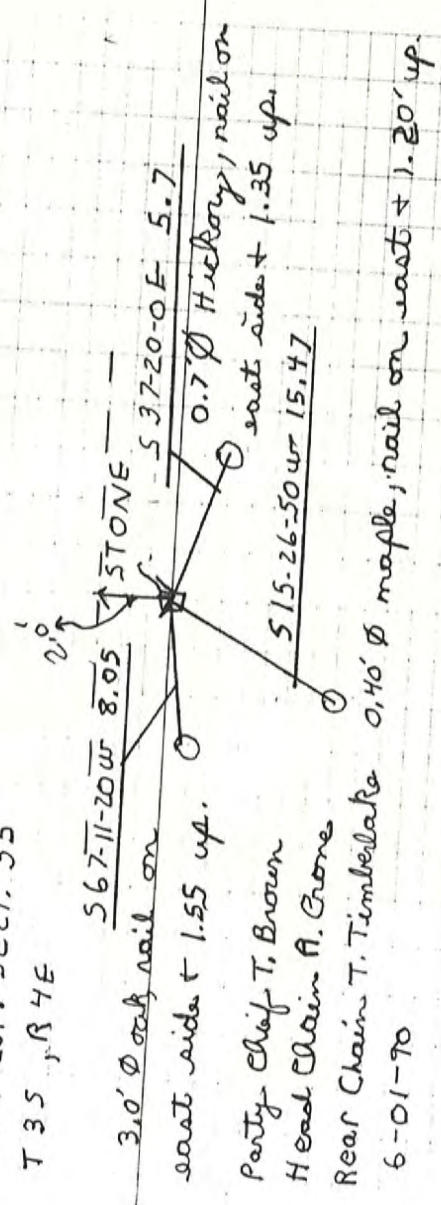
LOCATION	DESCRIPTION OF		DISTANCE FROM CORNER	BEARING FROM CORNER	DATE CHECKED	CHECKED BY	FIELD BOOK	REMARKS
	MONUMENT	REFERENCE						
S.W. Cor. Sect 35	Stone Marked by Metal Post Sign	7" Hickory	5.7	S37-20-0E	6-1-90	T.B.	#4 Pg. 14	Sign Placed
		Maple	15.47	S15-26-50W	6-1-90	T.B.		Sign Placed
		Oak	8.05	S67-11-20W	6-1-90	T.B.		Sign Placed

17-Y

17-Y

Stone is .50 x .50 x 1.00' out of ground, Stone is marked by a metal post + sign
all trees have a witness sign + a blaze with a aluminum in middle

S.W. Cor. Sect. 35
T 35 R 4 E



Party: Chief T. Brown
Head Chain A. Crane
Rear Chain T. Timberlake
6-01-70

LAND CORNER RECORD
(RECTANGULAR SURVEYS)

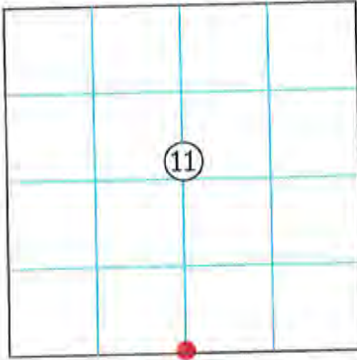
19-I

Harrison Co. No. I-19

T 3 S, R 4 E 2nd Prin. Mer. County Harrison State Indiana

Quarter Corner common to Sections 11 and 14

EXISTING SURVEYS	
No Original Government Survey Evidence Recovered	Picture
See survey of record in Instrument Number 201105556 of the Harrison County, Indiana records.	N/A
Subsequent Corner Restoration	Evidence of Subsequent Corner Restoration Found
Year surveyed _____ By _____ Where filed or recorded _____ Monument _____ <small>(Original, concrete post, iron rod, etc...)</small>	Year of search <u>2012</u> By <u>VHM</u> <u>Recovered 1½" crimped top pipe, 0.3' deep, with carsonite post 0.3' North..</u>
Bearing Trees, Reference Objects Species _____ Diameter _____ Bearing _____ Distance _____	



Signature Vick H. M...
Date: December 14, 2012

Perpetuation Record
Monument and accessories established. Include brief description of area. The monument is in a mowed yard 110'± North of Raccoon Creek. The monument was left in place as recovered. This corner has a long lineage and has been used by local surveyors as the Quarter corner. The position of the corner is supported by measurements to adjacent monuments in all cardinal directions and by very old and distinct cultural features in the vicinity. Corner accessories established:
White Fence Post, East, 87.2'
I-Beam, N.E. Corner Bridge, S 6° W, 105.8'
Flowering Fruit 12", S 43° W, 14.9'
Water Meter, N 85° W, 13.2'

N: 1096554.89 { Corner
E: 220313.56 {

Harold J. Hanst 2012

19-M

CORNER RECORD
HARRISON COUNTY

PAGE _____

CORNER / 19-M TOWNSHIP ³ SOUTH RANGE ⁴ EAST 2 ND PRINCIPAL MERIDIAN

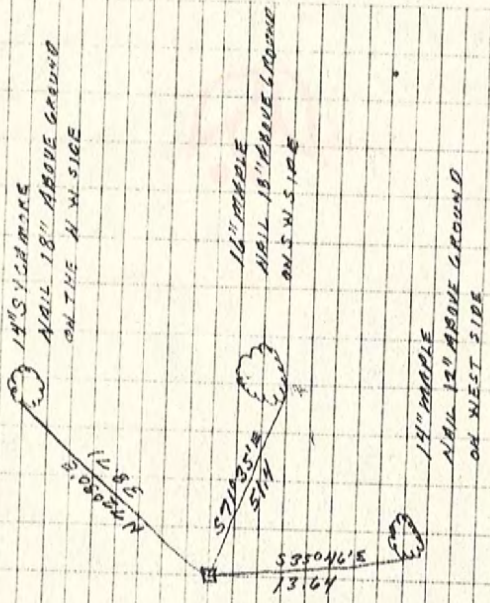
LOCATION	DESCRIPTION OF		DISTANCE FROM CORNER	BEARING FROM CORNER	DATE CHECKED	CHECKED BY	FIELD BOOK	REMARKS
	MONUMENT	REFERENCE						
NW Corner of NE 1/4 of Section 23	Stone	14" Sycamore	38.71	N 72-30E	6-25-81	M.B.	#116.25	Sign Placed
		16" Maple	51.4	S 71-35E	6-25-81	M.B.		Sign Placed
		14" Maple	13.64	S 35-46E	6-25-81	M.B.		Sign Placed

19-M

19-M

6-20-31
P.O. MAX KASOW
115 GEEB SPARKS
P.O. MARK AMOLD

N.Y. COR. OF N.E. 1/4 OF
SECTION 23 T.33 R.4E



GREEN LIMESTONE
SMALL POINT 2" ABOVE
GROUND FENCE RUNNING
E-W & N

DIETZEN NO. 385-3

HARRISON

COUNTY

COPNER 19-0

TOWNSHIP 3

RANGE

4

EAST

2ND

PRINCIPAL MERIDIAN

19-0

LOCATION	DESCRIPTION OF MONUMENT		DISTANCE FROM CORNER	BEARING FROM CORNER	DATE CHECKED	CHECKED BY	FIELD BOOK	REMARKS
	MONUMENT	REFERENCE						
N.E. CORNER S.W. 1/4 SEC. 23	STONE	IS OUT OF GROUND HAS X ON TOP MARKED WITH #4						
		0.90 Ø MAPLE	2.7'	N32-26-0E	5-15-95	T.B.	#4 Pg68	SIGN PLACED
		0.93 Ø HUCKBERRY	1.3'	SOUTH 7.50				SIGN PLACED
		1.0 Ø SYCAMORE	7.8	WEST				SIGN PLACED

19-0

190

Stone is 0.35 sq. + 0.60' out of ground. Stone has X in top. Stone is marked with a #4 rebar

1.0' sycamore, nail on south side + 0.90' up.

All trees have a blaze with a allium in middle. All trees have a witness sign.

0.90' maple, nail on east side + 0.80' up.

WEST 7.8'

STONE
N32-26-0E 2.7'

SOUTH 7.50'

Party Chief T. Brown
Head Chain M. Woodard
Rear Chain K. Stokes

0.93' hackberry, nail on west side + 1.3' up.

Date 5-15-95

NE. Cor. SW 1/4 Sect 23
T 35 R 4E

19-R

HARRISON

COUNTY

RANGE 4 EAST 2 ND PRINCIPAL MERIDIAN

TOWNSHIP 3 SOUTH

CORNER 19-R

LOCATION	DESCRIPTION OF MONUMENT		DISTANCE FROM CORNER	BEARING FROM CORNER	DATE CHECKED	CHECKED BY	FIELD BOOK	REMARKS
	MONUMENT	REFERENCE						
S.E. Corner of N.E. 1/4 of N.W. 1/4 Section 26	Stone	14" Beech	39.04	N12-07-20W	8-17-82	T.B.	#2 Pg.10	Sign Placed
		24" Beech	16.78	N61-02-10W	8-17-82	T.B.		Sign Placed
		17" Hickory	22.56	S65-44-10W	8-17-82	T.B.		Sign Placed

COUNTY

HARRISON

20-H

RANGE 4 EAST 2 ND PRINCIPAL MERIDIAN

TOWNSHIP 3 SOUTH

20-H

CORNER

LOCATION	DESCRIPTION OF		DISTANCE FROM CORNER	BEARING FROM CORNER	DATE CHECKED	CHECKED BY	FIELD BOOK	REMARKS
	MONUMENT	REFERENCE						
S.W. COR, N.W. $\frac{1}{4}$ N.W. $\frac{1}{4}$ N.E. $\frac{1}{4}$ S.E. $\frac{1}{4}$ Section 11	Stone	13" Hickory	20.0	West 2.2		T.B.	#2 Pg. 57	Sign Placed
		19" Hickory	2.6	West 1.1		T.B.		Sign Placed
		11" Maple	26.60	S70-09-40W		T.B.		Sign Placed

DIETZEN NO 386-2

30-H 90°

All trees have a blaze with a aluminum or galad. All trees have a witness sign

Party Chief T. Brown
Head Chain A. Clements
Rear Chain B. Cain

↑ N 01.75

① 1.1 maple, nail on west side + 2.2 up

120.2

Stone is 50x.50x.50 out of ground. Stone is marked with a metal post & sign

90° maple, nail on South side 1.6 up

12.6

5 26.60
0-09-hour

① 1.6 hickory, nail on west side + 1.5 up

S.W. Corner of H.W. 14, N.E. 14, S.E. 14 Section 11-T35-R4E

LAND CORNER RECORD
(RECTANGULAR SURVEYS)

20-1

Harrison Co. No. 1-20

T 3 S, R 4 E 2nd Prin. Mer. County Harrison State Indiana

East 1/16th Corner common to Sections 11 and 14

EXISTING SURVEYS	
<p>No Original Government Survey Evidence Recovered</p>	<p>Picture</p>
<p>N/A</p>	
<p>Subsequent Corner Restoration</p>	<p>Evidence of Subsequent Corner Restoration Found</p>
<p>Year surveyed _____ By _____ Where filed or recorded _____ Monument _____ <small>(Original, concrete post, iron rod, etc...)</small></p> <p style="text-align: center;">Bearing Trees, Reference Objects</p> <p>Species _____ Diameter _____ Bearing _____ Distance _____</p>	<p>Year of search <u>2012</u> By <u>VHM</u> Recovered <u>pinnacle limestone at fence "T" with yellow Harrison County Surveyor's sign, 0.7' S.W. and recovered Sugar tree from prior recovery.</u></p>
	<p style="text-align: center;">Perpetuation Record</p> <p>Monument and accessories established. Include brief description of area. <u>The monument was left in place as recovered. Corner accessories established:</u></p> <p><u>Fence Corner Post 8", N 6° W, 1.65' to a mag nail 0.6' up on West side</u> <u>Sugar 6", S 13° W, 8.40' to a mag nail 0.2' up on East side</u> <u>Sugar 14", S 77° E, 25.1' to a mag nail 0.6' up on South side</u></p> <p>N: 1096553 { Resource Grade Coordinates E: 221590 {</p>
<p>Signature <u>Vick H. M.</u></p> <p>Date: <u>December 14, 2012</u></p>	<p style="text-align: right;"><i>Handwritten signature</i> 2012</p>

COUNTY

HARRISON

RANGE 4 EAST 2 ND PRINCIPAL MERIDIAN

TOWNSHIP 3 SOUTH

CORNER 20-I

20-I

LOCATION	DESCRIPTION OF		DISTANCE FROM CORNER	BEARING FROM CORNER	DATE CHECKED	CHECKED BY	FIELD BOOK	REMARKS
	MONUMENT	REFERENCE						
S.W. Corner S.E. 1/4, S.E. Section 11	Stone	6" Maple	30.90	N24-20-10E		T.B.	#2 Pg.58	Sign Placed
20 I 7324 - Sec 11 Original Book 2 Page 58		7" Maple	25.20	S80-39-50E		T.B.		Sign Placed
SW corner, SE 1/4, SE 1/4 Sec 11		11" Cherry	39.71	West 2.15		T.B.		Sign Placed

20-7

DIETZEN NO. 385.3

All trees have a blaze with
a aluminum nail in middle.
All trees have a witness sign.

90° cherry nail on South
side + 1.70 up.

.50 & maple nail on west
side + 1.70 up.

West
39.71

Stone 2.5-20

.55 & maple nail on
South side + 1.70 up.

SW COR, SE 1/4, SE 1/4
Sec. 11 T35, R1E

Stone is .50 x .30 x 1.00
out of ground. Has X
in top. "Faint" stone is
marked with a metal
post + sign

Party Chief T. Brown
Lead Chain A. Clements
Lead Chain B. Cain

20-K
 20-K
 HARRISON COUNTY
 TOWNSHIP 3 SOUTH
 RANGE 4 EAST
 2 ND PRINCIPAL MERIDIAN
 CORNER 20-K

LOCATION	DESCRIPTION OF		DISTANCE FROM CORNER	BEARING FROM CORNER	DATE CHECKED	CHECKED BY	FIELD BOOK	REMARKS
	MONUMENT	REFERENCE						
S.W. Cor. S.E. 1/4 N.E. 1/4 Sec. 14	Stone	16" Oak	21.28	North	4-3-85	T.B.	#3 Pg. 10 Sign Placed	
		19" Beech	24.82	S13-51E	4-3-85	T.B.	Sign Placed	
		84" Maple	29.73	N26-03W	4-3-85	T.B.	Sign Placed	

Party Chief T. Brown

↑ NORTH

Head Chain A. Clements

Rear Chain M. Riley

1.3" oak, nail is on west side
+ 2.0 up..70" maple, nail is on EAST
Side + 2.2 up.NORTH
21.28N 96-03 W
29.73

20-K

All Trees have a
blaze with a aluminum
nail in middle. All
Trees have a red ring
painted around them.Stone is .50x.40x.70 out
of ground. Stone is
marked with a metal post
+ sign.

24.82

S 13-51 E

Date 4-3-85

S.W. Corner, SE 1/4, NE 1/4

1.6" Beech, nail is on west
Side + 2.3 up.

Sec 14 T 35. R 4 E.

CORNER RECORD

PAGE _____

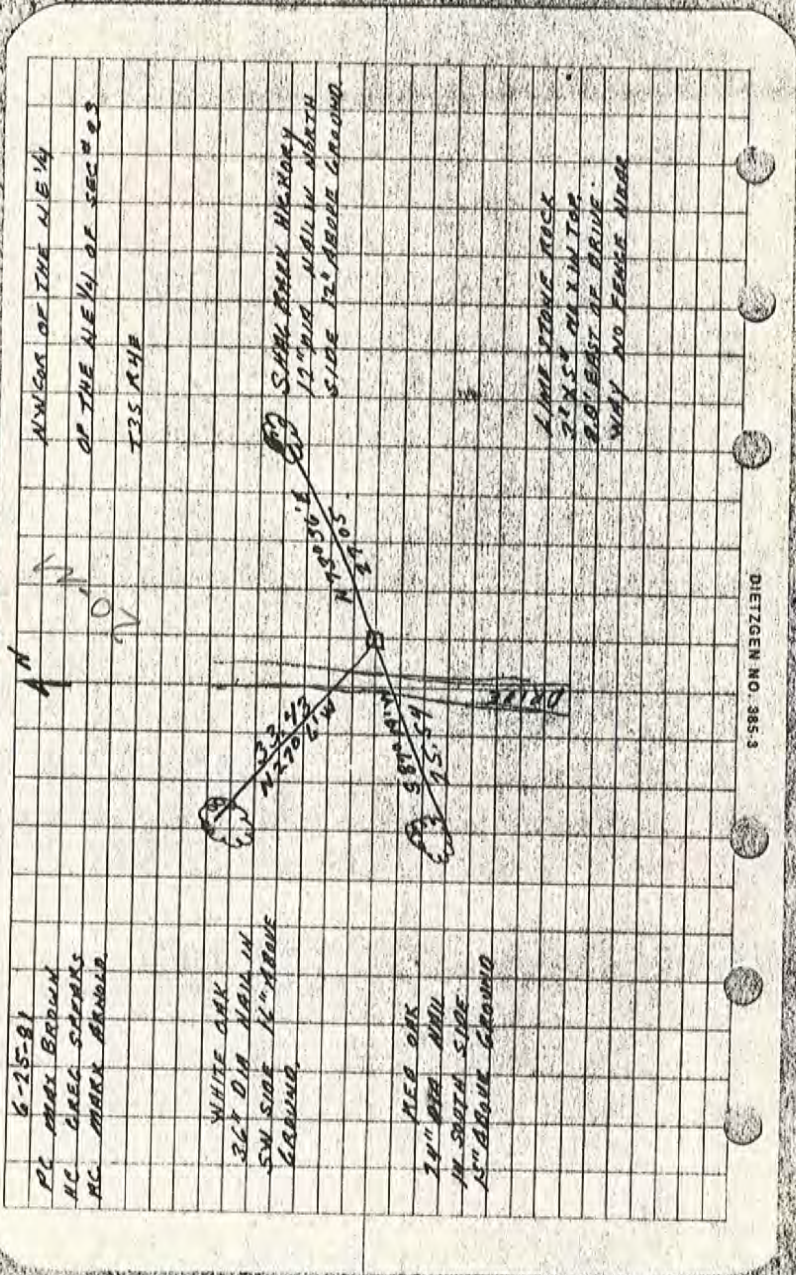
20-M

HARRISON COUNTY

CORNER 120-M TOWNSHIP 3 SOUTH RANGE 4 EAST 2 ND PRINCIPAL MERIDIAN

LOCATION	DESCRIPTION OF		DISTANCE FROM CORNER	BEARING FROM CORNER	DATE CHECKED	CHECKED BY	FIELD BOOK	REMARKS
	MONUMENT	REFERENCE						
N.W. Corner of N.E. 1/4 of NE 1/4 OF Section 23	Stone	12" Shag Bark Hickory	27.05	N 73-36E	6-25-81	M.B.	#1P6.26	Sign Placed
		24" Red Oak	25.54	S87-19N	6-25-81	M.B.		Sign Placed
		36" White Oak	33.43	N27-6W	6-25-81	M.B.		Sign Placed

20-M



DIETZEN NO. 385.3



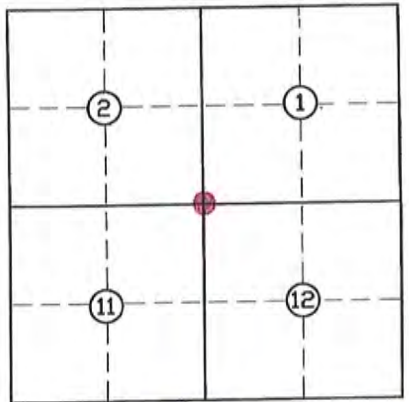
LAND CORNER RECORD
(RECTANGULAR SURVEYS)

21-E

Harrison County Surveyor's Reference Index Number: E-21

T 3 S R 4 E 2nd Mer., County Harrison State Indiana

Section Corner common to Sections 1, 2, 11 and 12

EXISTING SURVEYS	
Picture/Sketch	Picture/Sketch
	
No Original Government Survey Evidence Recovered	Evidence of Subsequent Corner Restoration Found
The position of this corner is further supported by very old and distinct cultural features in the vicinity and measurements to adjacent verifiable monuments. See surveys in the Harrison County Surveyor's office.	Year of search <u>2016</u> By <u>VHM</u> Recovered <u>mag nail in centerline of Angle Run Road at prominent line East, 20'± West of overhead power line.</u>
	<p style="text-align: center;">Perpetuation Record</p> <p>Monument and accessories established. Include brief description of area. <u>Monument left as recovered. Corner accessories established:</u> <u>Utility Pole with triangle Harrison County Surveyor's sign, N 11° E, 89.02' to bottom sign nail.</u> <u>Water Valve, S 31° W, 32.65'.</u> <u>South end 12" CMP, S 73° E, 10.4'.</u> <u>Rectangular Harrison County Surveyor's sign, S 70° E, 14.0'.</u></p> <p>Resource Grade N: 1101847.5 E: 222935.6</p>
Signature <u>VHM</u>	
Date: <u>06/23/2016</u>	<u>Hawley K. Kline June 27 2016</u>

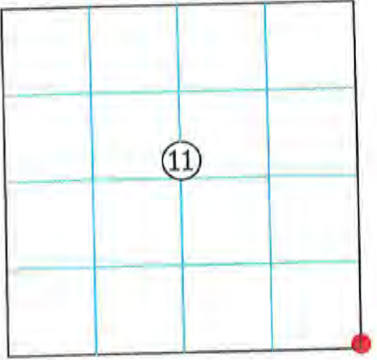
LAND CORNER RECORD
(RECTANGULAR SURVEYS)

21-I

Harrison Co. No. I-21

T 3 S, R 4 E 2nd Prin. Mer. County Harrison State Indiana

Section Corner common to Sections 11, 12, 13 and 14

EXISTING SURVEYS	
No Original Government Survey Evidence Recovered	Picture
N/A	N/A
Subsequent Corner Restoration	Evidence of Subsequent Corner Restoration Found
Year surveyed _____ By _____ Where filed or recorded _____ Monument _____ <small>(Original, concrete post, iron rod, etc...)</small> Bearing Trees, Reference Objects Species _____ Diameter _____ Bearing _____ Distance _____	Year of search <u>2012</u> By <u>VHM</u> <u>Recovered #4 pin, 0.4' deep at S.E. corner of field on East edge of woods road to the South.</u>
<div style="border: 1px solid black; padding: 5px; width: fit-content; margin: 0 auto;">  </div>	<p style="text-align: center;">Perpetuation Record</p> <p>Monument and accessories established. Include brief description of area. <u>The monument was left in place as recovered. Corner accessories established:</u></p> <p><u>Fence Corner, S 88° W, 24.05' to bottom nail of Harrison County Surveyor's sign</u></p> <p><u>Cedar 7", N 65° E, 15.6' to a mag nail 2' up on South side</u></p> <p><u>Poplar 23", S 28° W, 30.1' to a mag nail 0.6' up on East crown root</u></p> <p><u>Carsonite Post, South, 0.5'</u></p> N: 1096528 { Resource Grade Coordinates E: 222909 {
Signature <u>Vick H. Miller</u> Date: <u>December 14, 2012</u>	<u>Hansel K. Lester 2012</u>

HARRISON COUNTY

RANGE 4 EAST 2 ND PRINCIPAL MERIDIAN

TOWNSHIP 3 SOUTH

CORNER 21-K

21-K

LOCATION	DESCRIPTION OF		DISTANCE FROM CORNER	BEARING FROM CORNER	DATE CHECKED	CHECKED BY	FIELD BOOK	REMARKS
	MONUMENT	REFERENCE						
S.E. Corner N.E. 1/4 Section 14	Stone	11" Oak	6.97	S23-30E	4-3-85	T.B.	#3 Pg.12	Sign Placed
		17" Beech	44.32	S20-05W	4-3-85	T.B.		Sign Placed
		12 " Maple	9.69	N73-56W	4-3-85	T.B.		Sign Placed

NORTH ↑

All trees have a blaze with a aluminum in middle. All trees have a red ring painted around it.

120 Q maple, nail is on west side & 2.35 up.

21-K

DATE 4-3-25

9.69

N 73-56 W

Stone is .40 x .40 x .40 out of ground & comes to a point. Stone is marked with a metal post & sign.

S.E. Corner
N.E. 1/4 Sec. 14
T. 35. R. 4E

44.32

S 20-05 W

90' Q oak, nail is on west side & 1.50 up.

S 23-30 E
6.97

140 Q Beech, nail is on west side & 1.9 up.

Party Chief T. Brown
Head Chain A. Clements
Rear Chain M. Riley

21-M

HARRISON COUNTY

CORNER 21-M TOWNSHIP 3 SOUTH RANGE 4 EAST 2 ND PRINCIPAL MERIDIAN

LOCATION	DESCRIPTION OF		DISTANCE FROM CORNER	BEARING FROM CORNER	DATE CHECKED	CHECKED BY	FIELD BOOK	REMARKS
	MONUMENT	REFERENCE						
N.E. Corner Section 23 NE Corner NE 1/4 Sec 23 T 3 R 4 21M (orig)	Stone	Utility Pole	16.13	N 27-40E	6-18-81	M.B.	#1 Pg. 34	Sign Placed
		8" Sugar Maple	22.97	N 49-45W	6-18-81	M.B.		Sign Placed
		10" Sugar Maple	30.88	S 42-30E	6-18-81	M.B.		Sign Placed
		Metal Blvd.	7.09	S 37-5W	6-18-81	M.B.		Sign Placed

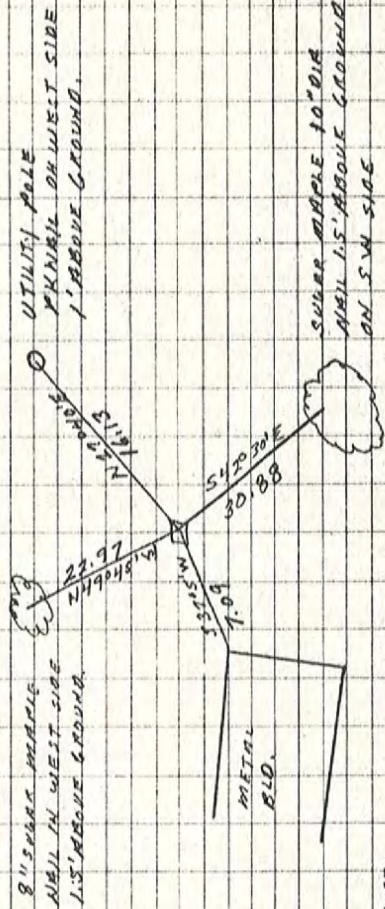
21-N

21-M

6-18-81

Y.C. MAX BROWN
H.C. GREG SPEARS
R.C. MAX ARNOLD

N.E. COR. A/E 1/4
SECS 23 T 35 R 4E



8" SUGAR MAPLE
ABOVE IN WEST SIDE
1.5' ABOVE GROUND.

UTILITY POLE
PINNAC OR WEST SIDE
1' ABOVE GROUND.

LIME STONE
7 1/2" LONG 5" WIDE
2" UNDER GROUND.
ROUNDER TOP.

METAL
P.L.D.

SUGAR MAPLE 10" DIA
ABOVE 1.5' ABOVE GROUND
ON S.W. SIDE

CORNER RECORD
HARRISON COUNTY

PAGE _____

21-0

CORNER 1/21-0 TOWNSHIP 3 SOUTH RANGE 4 EAST 2 ND PRINCIPAL MERIDIAN

LOCATION	DESCRIPTION OF		DISTANCE FROM CORNER	BEARING FROM CORNER	DATE CHECKED	CHECKED BY	FIELD BOOK	REMARKS
	MONUMENT	REFERENCE						
S.E. Corner of N.E. $\frac{1}{4}$ Section 23	Stone	24" Oak	55.70	S 32-20E	6-18-81	M.B.	#1 PG. 23	Sign Placed
		Utility Pole	27.67 9.8'	S 55-30W	6-18-81	M.B.		Sign Placed
		18" Shag Bark Hickory	14.85	N. 52.20E	6-18-81	M.B.		Sign Placed

TDB
7-29-09

21-0

6-18-81
P.C. MAX BROWN
H.C. GREG SPEARS
P.C. MARK ANNARD

S.E. COR. OF THE N.E. 1/4
SEC # 23 T 35 R 4 E

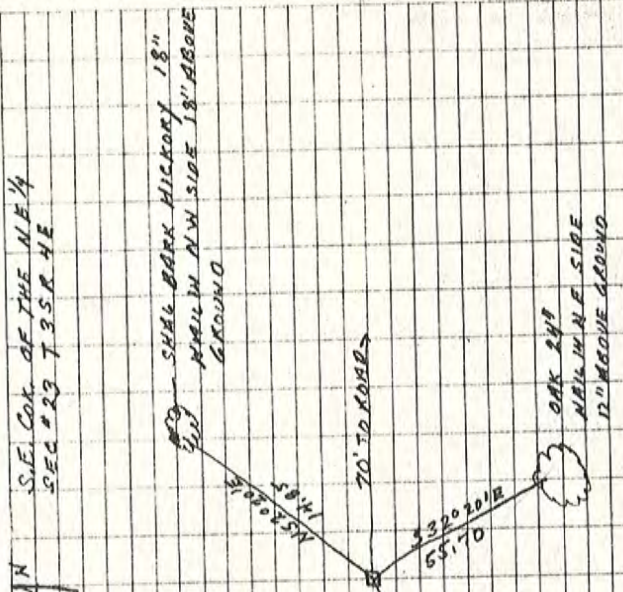
SHAL BARK HICKORY 18"
MAIN IN N.W. SIDE 18" ABOVE
GROUND

TO TO KNAB

UTILITY POLE
PK MAIN IN N.W. SIDE
12" ABOVE GROUND

LIMESTONE ROCK
3" ABOVE GROUND
7" X 2 1/2" NO. X IN TOP
O.S. FROM A 12" DIA FENCE
POST FENCE PONS N/A

OAK 2 1/2"
MAIN IN N.E. SIDE
12" ABOVE GROUND



DIETZEN NO. 3853

CORNER RECORD

HARRISON COUNTY

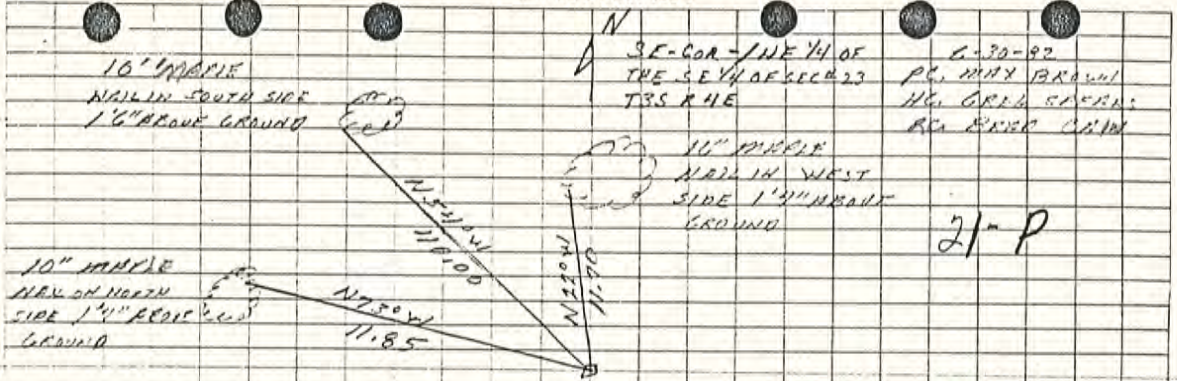
21-P

TOWNSHIP 3 SOUTH RANGE 4 EAST 2 ND PRINCIPAL MERIDIAN

CORNER 21-P

LOCATION	DESCRIPTION OF MONUMENT		DISTANCE FROM CORNER	BEARING FROM CORNER	DATE CHECKED	CHECKED BY	FIELD BOOK	REMARKS
	MONUMENT	REFERENCE						
S.E. Cor. N.E. 1/4 Of The S.E. 1/4 Of Sec. 23	Stone	16" Maple	11.70	N22°W	6-30-82	M.B.	#2 Pg. 7	Sign Placed
		10" Maple	11.85	N73°W	6-30-82	M.B.		Sign Placed
		10" Maple	40.00	N54°W	6-30-82	M.B.		Sign Placed

DIETZGEN NO. 385-3



10" NAIL
NAIL IN SOUTH SIDE
1/4" ABOVE GROUND

SE-COR - 1/4 NE 1/4 OF
THE SE 1/4 OF SEC 23
T35 R4E

G-30-92
PL. WMY BROWN
HG. GRAY STONE
RE. BIRD CAMP

10" NAIL
NAIL IN WEST
SIDE 1/4" ABOVE
GROUND

10" NAIL
NAIL ON NORTH
SIDE 1/4" ABOVE
GROUND

21-P

21-P

STONE IS A LIMESTONE ROCK
5" X 3 1/2" X 1 1/2" ABOVE GROUND
NO. 1 IN TOP FENCE POST ON
SOUTH - NO FENCE NORTH - SOUTH -
EAST

PAGE 7


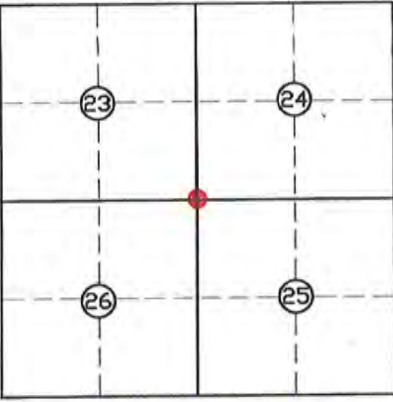
LAND CORNER RECORD
(RECTANGULAR SURVEYS)

21-Q

Harrison County Surveyor's Reference Index Number: Q-21

T 3 S R 4 E 2nd Mer., County Harrison State Indiana

Section Corner common to Sections 23, 24, 25 and 26

EXISTING SURVEYS	
<p>No Original Government Survey Evidence Recovered</p> <p>See surveys recorded as Instrument Numbers 200700656 and 200704853.</p>	<p>Picture/Sketch</p> 
Subsequent Corner Restoration	Evidence of Subsequent Corner Restoration Found
<p>Year surveyed _____ By _____</p> <p>Where filed or recorded _____</p> <p>Monument _____ <small>(Original, concrete post, iron rod, etc...)</small></p> <p style="text-align: center;">Bearing Trees, Reference Objects</p> <p>Species _____</p> <p>Diameter _____</p> <p>Bearing _____</p> <p>Distance _____</p>	<p>Year of search <u>2015</u> By <u>VHM</u></p> <p>Recovered existing mag nail at "T" intersection of Breckenridge Road and Baker Hill Road, 268 feet North of centerline of small bridge.</p>
	<p style="text-align: center;">Perpetuation Record</p> <p>Monument and accessories established. Include brief description of area. <u>Replaced existing mag nail with #5 x 12" steel pin, 0.6' deep in center of Breckenridge Lane with mag hub in concrete plug over monuments. Corner accessories established:</u></p> <p><u>Hemlock 7", N 59° E, 24.72'.</u></p> <p><u>Railroad spike, East, 12.55'.</u></p> <p><u>#5 steel pin, S 52° E, 16.59'.</u></p> <p><u>Sycamore 33", S 36° W, 31.77', MN + 1.0' on East side with Harrison County Surveyor's sign.</u></p> <p><u>17" Walnut fence corner, S 89° W, 22.0'.</u></p> <p><u>Utility Pole, N 25° W, 37.24', MN + 1.0' with Harrison County Surveyor's sign.</u></p>
<p>Signature <u>Vick H. M.</u></p> <p>Date: <u>Nov. 27, 2015</u></p>	<p>N: 1085890.2</p> <p>E: 222879.3</p> <p><u>Nov. 30 2015 - Harold K. Linstrom</u></p>

HARRISON

UNTY

25-G

CORNER 25-G

TOWNSHIP 3

RANGE 4

EAST

2ND

PRINCIPAL MERIDIAN

LOCATION	DESCRIPTION OF		DISTANCE FROM CORNER	BEARING FROM CORNER	DATE CHECKED	CHECKED BY	FIELD BOOK	REMARKS
	MONUMENT	REFERENCE						
N.E. Corner s.e. 1/4 Sec. 12	P.K. on Asphalt Hwy.	7" Hackberry	14.64	182° 0' 00"	4-25-90	R.M.	#4 Pg13	Sign Placed
		14" Hackberry	45.41	183° 27' 00"	4-25-90	R.M.		Sign Placed
		Asphalt Hgy.	39.72	60° 44' 00"	4-25-90	R.M.		Sign Placed

25-G

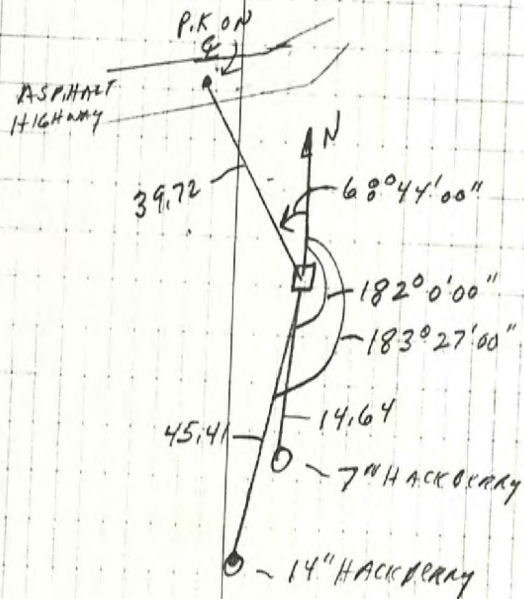
NE CRN, SE QTR, SECT 12, T35, R4E 4N
WRO 4-25-90

INST MAN RON MANN

CHAINMAN J. TOOLE

CHAINMAN L. SHELLEY

DIETZGEN NO. 385-3



LAND CORNER RECORD
(RECTANGULAR SURVEYS)

Harrison County Surveyor's Reference Index Number: 25-M

T 3 S R 4 E 2nd Mer., County Harrison State Indiana

Section Corner common to Sections 13 and 18

EXISTING SURVEYS	
Picture/Sketch	Picture/Sketch
No Original Government Survey Evidence Recovered	Evidence of Subsequent Corner Restoration Found
	Year of search <u>2018</u> By <u>WPM</u> <hr/> <hr/>
<div style="border: 1px solid black; width: 150px; height: 100px; margin: 0 auto; text-align: center; padding: 5px;"> SE Corner Section 13 </div>	<p style="text-align: center;">Existing Section Corner Notes References for: SE Corner Section 13</p> <p>Monument and accessories established. Include brief description of area. <u>Existing stone found 0.3x0.5 & 0.6 up (1.1 ft W of existing post)</u></p> <p><u>Ref #1= sign in north side of 6x8 in post 32 in up from ground</u> S 5 E, 53.2 ft</p> <p><u>Ref #2= sign in north side 14 walnut tree 36 in up from ground</u> S 50 E, 63.2 ft</p> <hr/>
Signature <u>William McCort</u> Date: <u>10/5/18</u>	ISPCS-EZ-U.S.Survey Feet N: 1091138.76 E: 228312.98

HARRISON

COUNTY

25-P

CORNER

25-P

TOWNSHIP

3

RANGE

4

EAST

2ND

PRINCIPAL MERIDIAN

LOCATION	DESCRIPTION OF		DISTANCE FROM CORNER	BEARING FROM CORNER	DATE CHECKED	CHECKED BY	FIELD BOOK	REMARKS
	MONUMENT	REFERENCE						
N.E. CORNER S.E. 1/4 S.E. 1/4 SECTION 24	STONE IS 0.40' X 0.20'		0.60'	OUT OF GROUND	STONE IS MARKED		WITH METAL POST & SIGN	
	0.80' MAPLE		30.65	S9-57-0W	3-10-95	T.B.	#4 Pg. 66	SIGN PLACED
	1.80' Hickory		32.2'	S41-18-0W				SIGN PLACED
	1.40 Maple		25.65	S74-52-0W				SIGN PLACED

25-P

25P

↑ NW

Party Chief T. Brown
Head Chain M. Chandler
Rear Chain S. Ray

All Trees have a blaze
with a aluminum nail in
middle. All Trees have
a witness sign.

S74-52-0w 25.65

1.40' Q maple, nail on
south side +
1.10' up.

S41-18-0w 32.2'

1.80' Hickory
nail on
North side +
1.6' up.

ME Cor. SE 1/4 - SE 1/4 Sect. 24
T35, R4E

STAKE IS 0.40' x 0.20' x

0.60' out of ground
stone is marked with
a metal post + sign

S9-57-0w 30.65

0.80' Q maple, nail on west
side + 0.90' up.

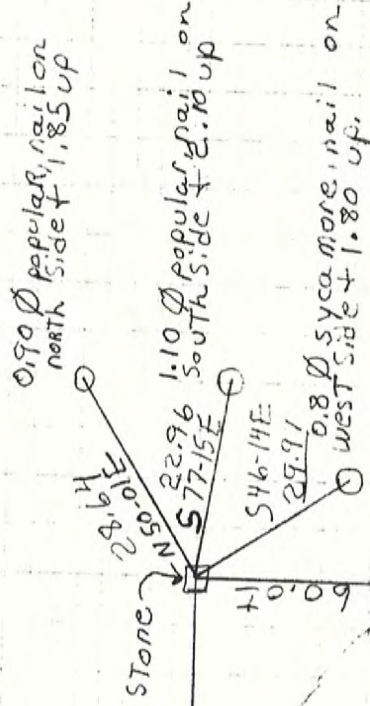
Page 66

25-Q

Party Chief T. Brown
Head Chain R. Crone
Rear Chain A. Clements

All Trees have a witness sign.

Stone is 40x80x
60 out of ground
& is marked with
a metal post & sign



S. E. Corner SE 4
Section 24, T 35, R 4E

PAGE
25-Q

HARRISON

CITY

25-Q

CORNER 25-Q

TOWNSHIP 3

RANGE 4

EAST

2ND

PRINCIPAL MERIDIAN

LOCATION	DESCRIPTION OF		DISTANCE FROM CORNER	BEARING FROM CORNER	DATE CHECKED	CHECKED BY	FIELD BOOK	REMARKS
	MONUMENT	REFERENCE						
S.E. Cor. SE 1/4 Section 24	Stone	.90' Popular	28.64	N50-01E		T.B.	#3 Pg52	Sign Placed
		1.10 Popular	22.96	S77-15E		T.B.		Sign Placed
		.8' Sycamore	29.97	S46-14E		T.B.		Sign Placed

Original Book 3 Page 52

Coils for 254

T 3 R 4

Sec 24

SE Corner SE 1/4