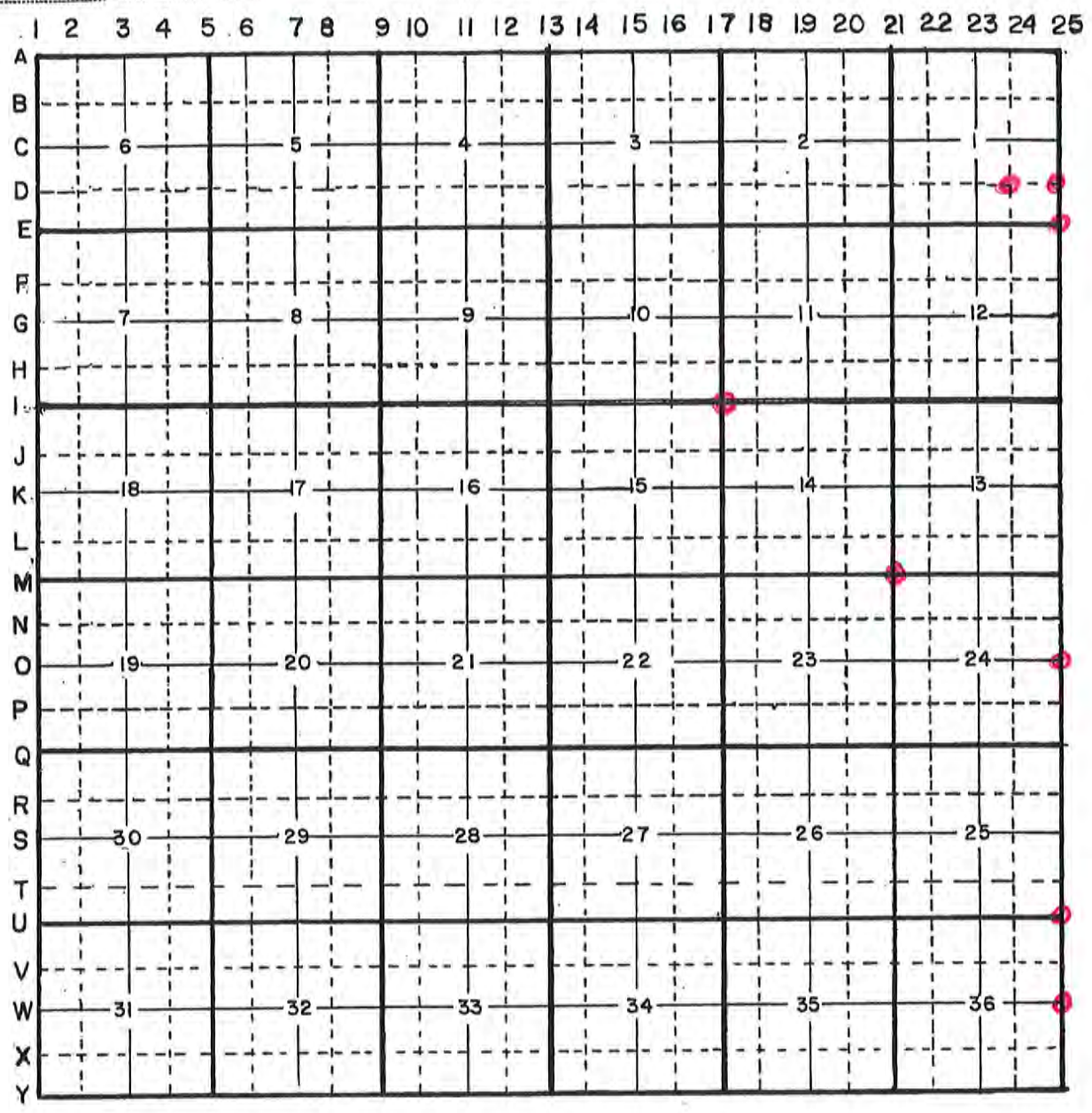


HARRISON COUNTY CORNER REFERENCE

TOWNSHIP 2 SOUTH RANGE 2 EAST



HARRISON

DUNTY

17-I

COPNER 17-I

TOWNSHIP 2

RANGE 2

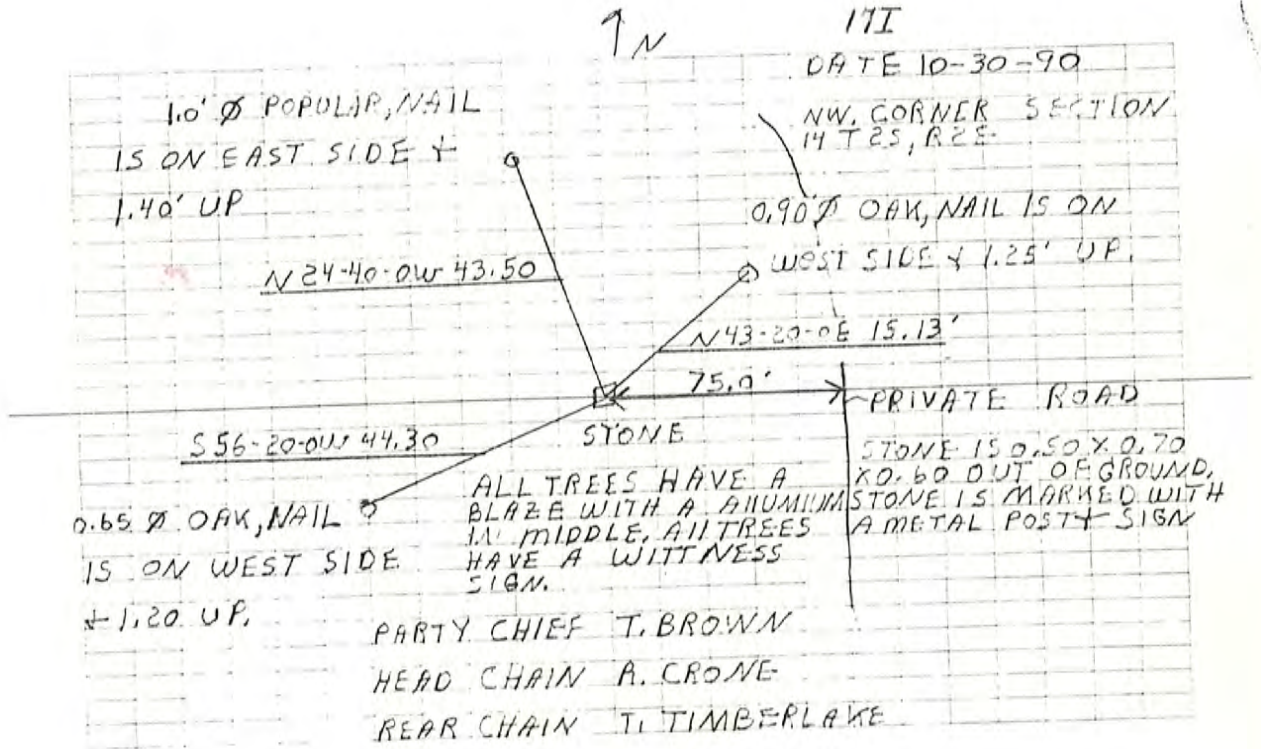
EAST

2ND

PRINCIPAL MERIDIAN

LOCATION	DESCRIPTION OF		DISTANCE FROM CORNER	BEARING FROM CORNER	DATE CHECKED	CHECKED BY	FIELD BOOK	REMARKS
	MONUMENT	REFERENCE						
N.W. Corner Sec. 14	Stone	0.90' Oak	15.13	N43-20-0E	10-30-90	T.B.	#4Pg20	Sign Placed
	Private Road	0.60' Oak	44.30	S56-20-0W	10-30-90	T.B.		Sign Placed
		1.0' Poplar	43.50	N24-40W	10-30-90	T.B.		Sign Placed

1M-I



1.0' Ø POPULAR, NAIL
IS ON EAST SIDE †
1.40' UP

$N 24-40-0W$ 43.50

171
DATE 10-30-90

NW CORNER SECTION
14 T2S, R2E

0.90' Ø OAK, NAIL IS ON
WEST SIDE † 1.25' UP

$N 43-20-0E$ 15.13'

75.0'

PRIVATE ROAD

$S 56-20-0W$ 44.30

STONE

0.65' Ø OAK, NAIL
IS ON WEST SIDE
† 1.20' UP

ALL TREES HAVE A
BLAZE WITH A ALUMINUM
IN MIDDLE, ALL TREES
HAVE A WITNESS
SIGN.

STONE IS 0.50 X 0.70
X 0.60 OUT OF GROUND.
STONE IS MARKED WITH
A METAL POST † SIGN

PARTY CHIEF T. BROWN

HEAD CHAIN A. CRONE

REAR CHAIN T. TIMBERLAKE

21-M

CORNER 21-M TOWNSHIP 2 SOUTH RANGE 2 EAST 2 ND PRINCIPAL MERIDIAN

LOCATION	DESCRIPTION OF		DISTANCE FROM CORNER	BEARING FROM CORNER	DATE CHECKED	CHECKED BY	FIELD BOOK	REMARKS
	MONUMENT	REFERENCE						
N.E. Corner Section 23	Stone	7" Cherry	6.95	N58-20W	7-16-82	T.B.	#2 Pg.9	Sign Placed
		14" Walnut	26.82	S1-23E	7-16-82	T.B.		Sign Placed
		36" Ash	25.13	S88-11W	7-16-82	T.B.		Sign Placed

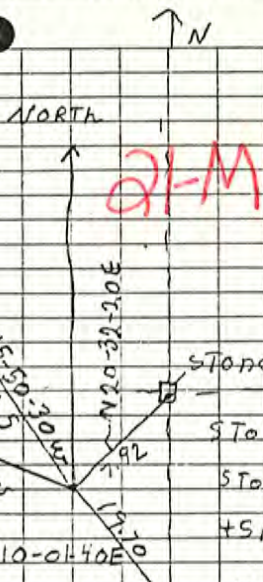
Date 7-16-82
 P.C. T. Brown
 H.C. D. Neal
 P.C. P. Primavera

60' \odot Cherry nail 2.2' up,
 nail on south side

3' \odot Ash
 nail 2.5' up on
 EAST side

NE. 1/4 Sect 23
 T25, R 9E

21-M



ALL trees have a blaze with
 a aluminum nail in middle. ALL trees
 have a witness sign + a blue
 ring.

STONE
 Stone is .50x.50x.70 out of ground
 Stone is marked with a metal post
 + sign.

1.20' \odot walnut nail 2.5' up + on west
 side

HARRISON COUNTY

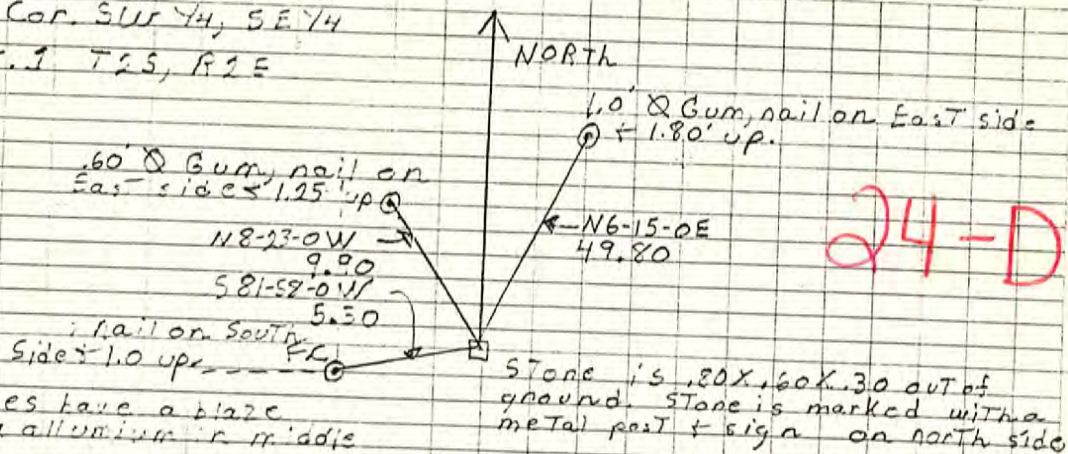
TOWNSHIP 2 SOUTH

RANGE 2 EAST 2 ND PRINCIPAL MERIDIA

24-D
CORNER 24-D

LOCATION	DESCRIPTION OF MONUMENT		DISTANCE FROM CORNER	BEARING FROM CORNER	DATE CHECKED	CHECKED BY	FIELD BOOK	REMARKS
	MONUMENT	REFERENCE						
N.E. Corner S.W. 1/4 S.E. 1/4 Section 1	Stone	12" Gum	49.80	N6-15-0E	5-84	T.B.	#2 Pg. 45	Sign Placed
			5.50	S81-58-0W	5-84	T.B.		Sign Placed
			9.90	N8-23-0W	5-84	T.B.		Sign Placed

NE. Cor. SW 1/4, SE 1/4
 Sect. 1 T25, R1E



All trees have a blaze
 with a aluminum in middle

All trees & post have a
 witness sign

Stone is 20x16x30 out of
 ground. Stone is marked with a
 metal post & sign on north side

Party Chief T. Brown

Head Chain A. Clements

Rear Chain M. Messes

24-D

PAGE 46

HARRISON COUNTY

CORNER

25-D

25-D

CORNER

TOWNSHIP 2 SOUTH

RANGE 2 EAST

2 ND PRINCIPAL MERIDIA

LOCATION	DESCRIPTION OF MONUMENT		DISTANCE FROM CORNER	BEARING FROM CORNER	DATE CHECKED	CHECKED BY	FIELD BOOK	REMARKS
	MONUMENT	REFERENCE						
N.E. Corner, S.E. 1/4 S.E. 1/4 Section 1	#5 ReBar	13" Oak	28.40	N60-11-0E	5-84	T.B.	#2 Pg. 44	Sign Placed
		8.4" Cedar	15.45	S35-47-0W	5-84	T.B.		Sign Placed
		12" Oak	21.05	N59-20-0W	5-84	T.B.		Sign Placed

NE. Cor., SE 1/4, SE 1/4,

Sect 1, T 25, R 2 E

25-D

← Old Co. Food Bed

North

25-D

1.20 Oak, nail on
East side + 1.10 up.N 59-20-0 W
21.05S 35-47-0 W
15.450.70 Cedar, nail on
South side + 1.25 up.1.10 Oak, nail on south side
+ 1.50 up.Lane
N 60-11-0 E
28.40

#5 ReBar

All Trees have a blaze with
a aluminum nail in middle.All Trees have a witness
sign.#5 Rebar is marked
with metal post + sign
on north side

Party Chief T. Brown

Head Chain A. Clements

Rear Chain M. Moses

PAGE 44

HARRISON COUNTY

TOWNSHIP 2 SOUTH

RANGE 2 EAST

25-E

CORNER 25-E TOWNSHIP 2 SOUTH RANGE 2 EAST 2 ND PRINCIPAL MERIDIA

LOCATION	DESCRIPTION OF MONUMENT		DISTANCE FROM CORNER	BEARING FROM CORNER	DATE CHECKED	CHECKED BY	FIELD BOOK	REMARKS
	MONUMENT	REFERENCE						
S.E. Corner Section 1	Stone	Tripple Black Oak	69.75	N7-26-0W	5-84	T.B.	#2 Pg. 45	Sign Placed
		Post	27.40	S20-47-0W	5-84	T.B.		Sign Placed
		Power Pole	44.30	N48-19-0W	5-84	T.B.		Sign Placed

The Tree has a blaze with a aluminum nail in middle.

The Tree, post, & power pole have a witness sign

nail on EAST side P.P. + 1.20' up.

N42-19-0.W
44.30

S 20-47-0.W
27.40

nail on EAST side + 1.00' up. F.C.

S.E. COR. Sect. 1

T2S, R2E

↑ North

Tripple Black oak, Tree in middle

2.00, nail on EAST side + 2.5 up.

N7-26-0.W
69.75

R.R. CO. Road

LANE To Church

25-E

Party Chief T. Brown

Head Chain A. Clements

Rear Chain M. Mosses

25-E

Page 45

25-0

HARRISON COUNTY

RANGE 2 EAST 2 ND PRINCIPAL MERIDIAN

TOWNSHIP 2 SOUTH

CORNER 25-0

LOCATION	DESCRIPTION OF		DISTANCE FROM CORNER	BEARING FROM CORNER	DATE CHECKED	CHECKED BY	FIELD BOOK	REMARKS
	MONUMENT	REFERENCE						
N.E. Corner S.E. 1/4 Section 24	Stone	Post	1.50	West	7-16-85	T.B.	#3 Pg.22	Sign Placed
		Post		West	7-16-85	T.B.		Sign Placed

57

NE. Cor. SE 1/4, T 25, R 2 E

Sec 24

DATE 7-16-85

both post have a
witness sign & a
aluminum nail as
reference.

Party Chief T. Brown

Head Chain A. Clements

Rear Chain P. Primavera

7.10

Post nail is on west side 1.20 up.

Stone is .40 x .40 x .40 out of ground

Stone is marked with a metal post & sign

1.50

Post nail is on west side 1.30' up.

Page 22
35-0

25-U

HARRISON COUNTY

COFNER U-25 TOWNSHIP 2S RANGE 2E EAST 2ND PRINCIPAL MERIDIAN

LOCATION	DESCRIPTION OF		DISTANCE FROM CORNER	BEARING FROM CORNER	DATE CHECKED	CHECKED BY	FIELD BOOK	REMARKS
	MONUMENT	REFERENCE						
NE Corner Section 36	#4 Rebar	26" W. Oak	18'	S	8-4-08	TOB	6/5	
		8" Sugar w/sign	20.5'	N 34 E				

TWNSHP: 2 RANGE: 2 SECTION: 36

25-U

CORNER REF. LD.: 4-25

DATE: 8/4/08

MONUMENT INFORMATION

LOCATION: NE CORNER SEC 36

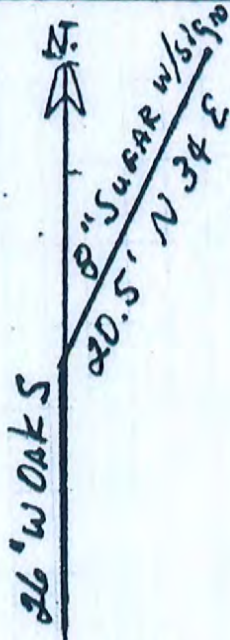
DESCRIPTION: #4 REBAR

ADDITIONAL DISTINGUISHING CHARACTERISTICS:

SIGN PLACED: () YES DATE: / /

WITNESS MARKERS

TYPE	SIGN	BLAZE	ADDITION DESCRIPTION
1. <u>26" W. OAK</u>	()	()	<u>18' S</u>
2. <u>8" SUGAR</u>	(X)	()	<u>20.5' N 34E</u>
3.	()	()	



	2	3	4	5	6	7	8	9	10	11	12	13	14	15	16	17	18	19	20	21	22	23	24	25
A	6	5	4	3	2	1																		
B																								
C	7	8	9	10	11	12																		
D																								
E	18	17	16	15	14	13																		
F																								
G	19	20	21	22	23	24																		
H																								
I	30	29	28	27	26	25																		
J																								
K	31	32	33	34	35	36																		
L																								
M																								
N																								
O																								
P																								
Q																								
R																								
S																								
T																								
U																								
V																								
W																								
X																								
Y																								
Z																								

RECOVERED BY: J. M.

DATE: / / 2000
DATE: / /
DATE: / /

REFERENCED BY: T. D. B

DATE: 8/4/08
DATE: / /
DATE: / /

RECORDED IN PERPETUATION RECORDS BOOK:
Thomas D. Bube

DATE: 8/18/08

TY

HARRISON

25-W

CORNER W-25 TOWNSHIP 2 S RANGE 2 E EAST 2ND PRINCIPAL MERIDIAN

LOCATION	DESCRIPTION OF		DISTANCE FROM CORNER	BEARING FROM CORNER	DATE CHECKED	CHECKED BY	FIELD BOOK	REMARKS
	MONUMENT	REFERENCE						
E 1/4 Corner Section 36	Stone	4" Beech	9.5'	N 31 E	8-4-08	TOB	2/2	Updated
		12" Sugar	3.4'	N 58 W				
		15" Elm	16.6'	N 7 W				
		14" Sugar w/sign	25.5'	S 67 W				
		5/8 Pipe	27.05'	N				

25-W

CORNER 25-W TOWNSHIP 2 SOUTH

RANGE 2 EAST 2 ND PRINCIPAL MERIDIAN

LOCATION	DESCRIPTION OF MONUMENT		DISTANCE FROM CORNER	BEARING FROM CORNER	DATE CHECKED	CHECKED BY	FIELD BOOK	REMARKS
	MONUMENT	REFERENCE						
N.E. Corner of S.E. 1/4 Sec. 36	Stone	6" Maple	24.25	S24-21-20E	4-23-82	T.B.	#2 Pg.2	Sign Placed
		11" Maple	24.97	S68-55-0W	4-23-82	T.B.		Sign Placed
		12" Locust	16.52	N0-12-0W	4-23-82	T.B.		Sign Placed

HARRISON

TY

CORNER W-25

TOWNSHIP 2 S

RANGE 2 E

EAST 2ND

PRINCIPAL MERIDIAN

LOCATION	DESCRIPTION OF		DISTANCE FROM CORNER	BEARING FROM CORNER	DATE CHECKED	CHECKED BY	FIELD BOOK	REMARKS
	MONUMENT	REFERENCE						
E 1/4 Corner Section 36	Stone	4" Beech	9.5'	N 31 E	8-4-08	TOB	2/2	Updated
		12" Sugar	3.4'	N 58 W				
		15" Elm	16.6'	N 7 W				
		14" Sugar w/sign	25.5'	S 67 W				
		5/8 Pipe	27.05'	N				

Date 4-23-82

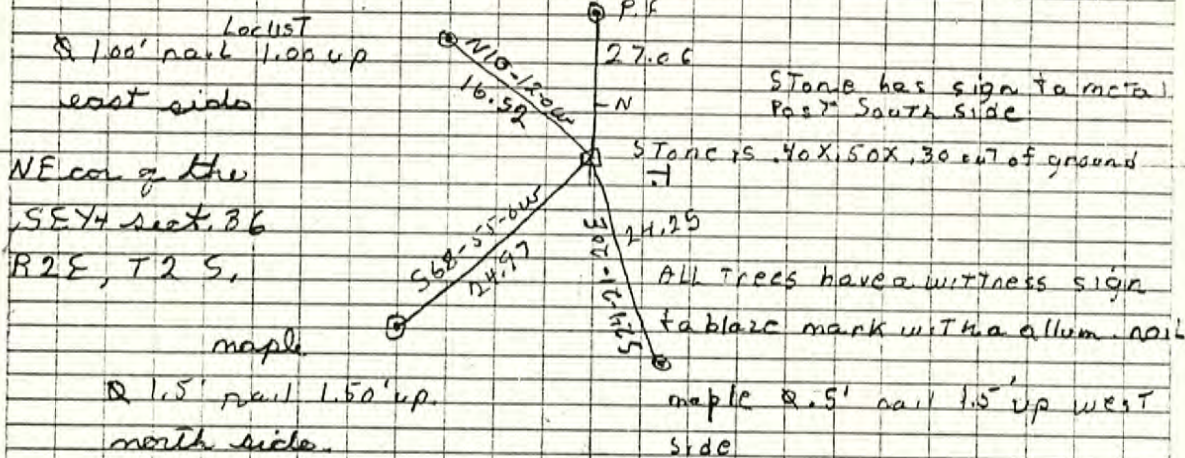
9N

Party Chief T. Brown

Head Chain M. ARNOLD

Range Chain D. Neil

25-W

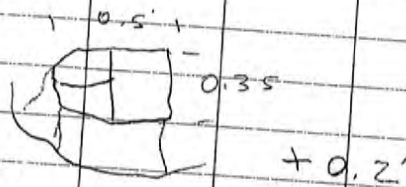


25-W

25-W

EY4 CORNER
Sec. 36, T25 R2E W-25

EX. L-STONE w/ yellow HCS
SIGN & STEEL POST 0.5' S, +
3/4" PIPE 0.3' N + 0.6' E Steel
" T" Post 0.4' N



WITNESSES

Beech	SUGAR	ELM	SUGAR	PIPE
4"	12"	15" w/s	14" w/s	5 3/8" + 0.35
N31E	N58W	N7W	S67W	N
9.5'	3.4'	16.6'	25.5'	27.05'