

Floyd County Board of Commissioners
Ordinance Installation of Traffic Control Device

Whereas, the Floyd County Board of Commissioners met on March 1, 2016 on this matter pursuant to IC 9-21-3-2;

Whereas, the Board of Commissioners received control of Charlestown Road also known as State Road 311 from the State of Indiana;

Whereas, the Board of Commissioners commissioned a traffic warrant study which indicated a need for a traffic control signal at the intersection of Sunset Drive and Charlestown Road as indicated in Exhibit A;

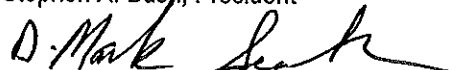
NOW, THEREFORE,

BE IT ORDAINED that Floyd County Board of Commissioners hereby approve the installation of a traffic control signal at the intersection of Sunset Drive and Charlestown Road.

SO ORDAINED this 1st day of March, 2016.

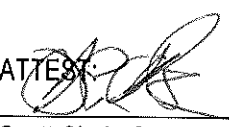
BOARD OF COMMISSIONERS
COUNTY OF FLOYD


Stephen A. Bush, President


D. Mark Seabrook, Commissioner

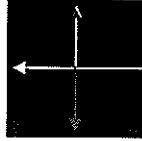

Charles Freiburger, Commissioner

ATTEST


Scott Clark, County Auditor

Traffic

Traffic



Engineering, Inc.

TRAFFIC ANALYSIS

Traffic Signal Warrant Analysis for

Charlestown Road at Sunset Drive

February 12, 2014

Prepared by

Chet M. Skwarcan, PE

Traffic Engineering, Inc.

866-255-5959

Executive Summary

Based on analysis herein, a traffic signal is recommended to be installed as part of the intersection realignment project at Charlestown Road and Sunset Drive. A traffic signal at this location is adequately spaced from the existing signal at Charlestown Crossing and provides enhanced access to area destinations while reducing side street demand at the Charlestown Crossing signal. Additionally, a traffic signal at this location provides signalized pedestrian access and crosswalks to facilitate the projected increase in pedestrian traffic associated with the planned 38-acre park and multi-use trail along Charlestown Road.

Certification

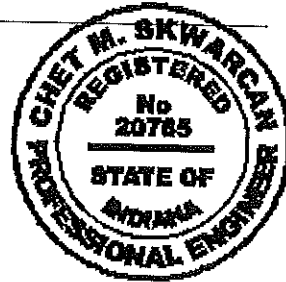
I certify this Traffic Analysis has been prepared by me or under my immediate supervision and that I have experience and training in the field of traffic and transportation engineering.



Chet M. Skwarczan, P.E.
Indiana Registration 20785
Traffic Engineering, Inc.
PO Box 555
Danville, Indiana 465122
cms@trafficengineering.com

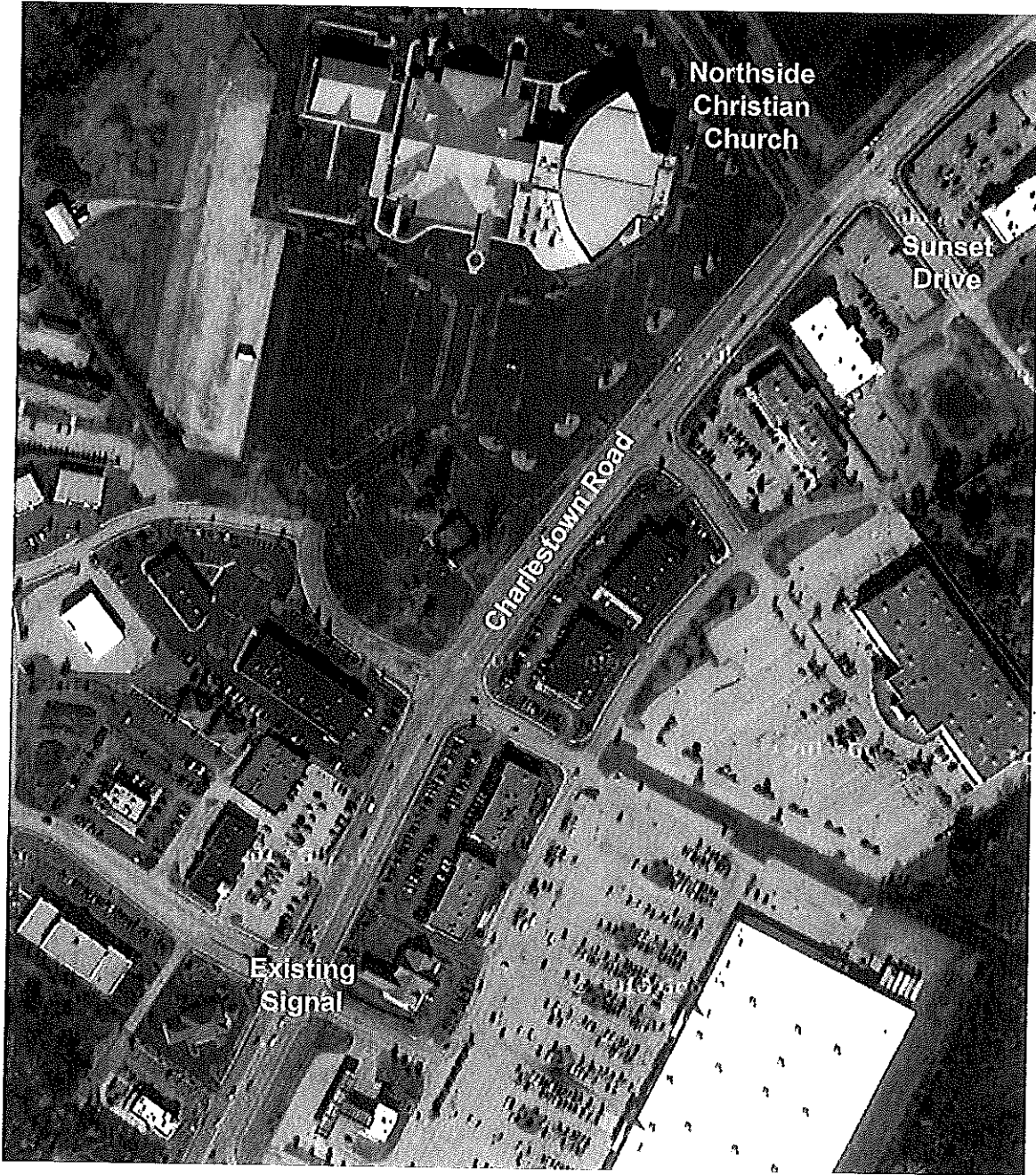
February 12, 2014

Date



Introduction

The purpose of this analysis is to evaluate the need for a traffic signal along Charlestown Road at the intersection of Sunset Drive. This intersection is presently offset with the primary driveway for Northside Christian Church; however, plans are underway to reconfigure the intersection and remove the offset. The nearest traffic signal is approximately 1800 feet south as depicted below:



Existing Traffic

Traffic signal warrants are typically based on hourly traffic volumes exiting from the side street approach on a typical weekday. Traffic data for this location was based on existing peak hour traffic volumes¹ as well as historical data² to determine the hourly distribution for the side street approach. Although there is also significant Sunday traffic associated with the church, the traffic experienced on a typical weekday is controlled by volumes on Sunset Drive exiting onto Charlestown Road. The table below summarizes estimated hourly volumes for a typical weekday:

	Sunset Drive <i>Exiting Traffic Only</i>
6:00 AM	2
7:00 AM	7
8:00 AM	10
9:00 AM	16
10:00 AM	34
11:00 AM	50
12:00 PM	66
1:00 PM	69
2:00 PM	71
3:00 PM	70
4:00 PM	71
5:00 PM	74
6:00 PM	60
7:00 PM	58
8:00 PM	62
9:00 PM	58
10:00 PM	22

¹ KIPDA, 10/15/13

² Institute of Transportation Engineers, Trip Generation Manual, 9th Edition