

**PRIOR TO 2009**

- COUNTY SURVEYOR RECORDS INDICATE A MONUMENT WAS FOUND
- COUNTY SURVEYOR RECORDS INDICATE NO EXCAVATION WAS PERFORMED, A MONUMENT WAS SET ON OR BELOW THE SURFACE

**RMA 2009 PROJECT**

- A MONUMENT WAS FOUND ON OR BELOW THE SURFACE (NO STONE WAS FOUND AFTER EXCAVATING)
- NO MONUMENT OR STONE WAS FOUND ON OR BELOW THE SURFACE, CORNER MONUMENT TO BE SET
- MONUMENT SET
- MONUMENT FOUND AT EXCAVATION

**NOT TO SCALE**

**CASS COUNTY,  
INDIANA  
SECTION  
CORNER  
PERPETUATION  
PROJECT**

**CLAY TOWNSHIP  
TWP 27N, R-2-E**

[www.masurveying.com](http://www.masurveying.com)



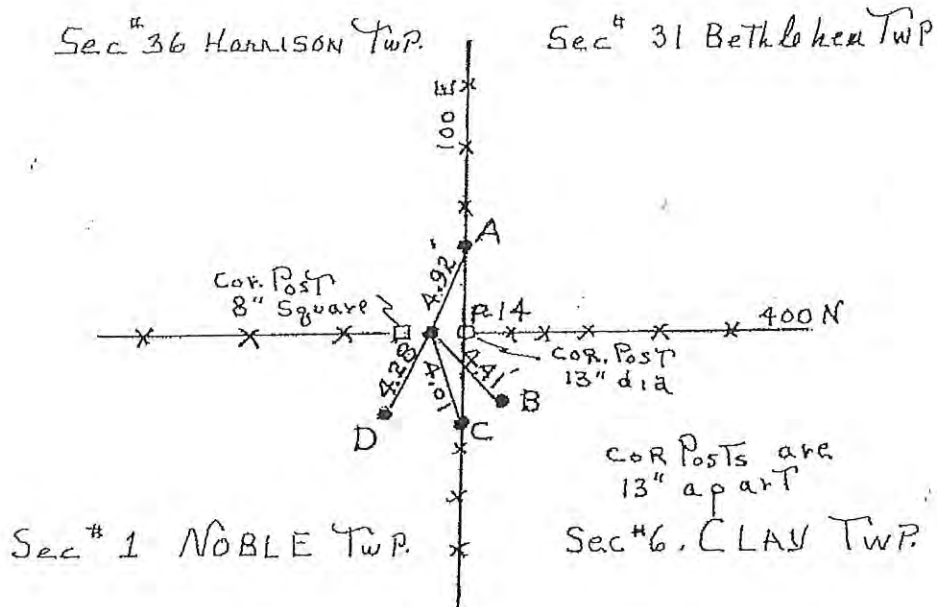
**RANDALL MILLER & ASSOCIATES** INC.

*Surveyors • Engineers • Consultants*

<p>145 E. Third Street Marion, IN 46952 Ph: (765) 662-1284 Fax: (765) 668-7412 <a href="mailto:marlon@masurveying.com">marlon@masurveying.com</a></p>	<p>108 E. Washington St., Ste 40 Muncie, IN 47305 Ph: (765) 289-1917 Fax: (765) 289-1931 <a href="mailto:stuccio@masurveying.com">stuccio@masurveying.com</a></p>	<p>60 W. Market Street, Ste. J Webash, IN 46992 Ph: (260) 593-4467 Fax: (260) 593-0462 <a href="mailto:wabaah@masurveying.com">wabaah@masurveying.com</a></p>
---	---	---

SE CORNER SEC. #36; T28N R1E HARRISON TWP.

CASS COUNTY IND.



FOUND A TWO MAN STONE WITH A + MARK AT GROUND SURFACE, LYING BETWEEN TWO CORNER POSTS AS SHOWN ABOVE. REMOVED AND REPLACED WITH A MAG REF PIN, SET AT SURFACE. ALSO SET FOUR MAG REF PINS AS SHOWN ABOVE:  
RADI AS FOLLOWS:

P-14-A=4.92'

P-14-B=4.41'

P-14-C=4.01'

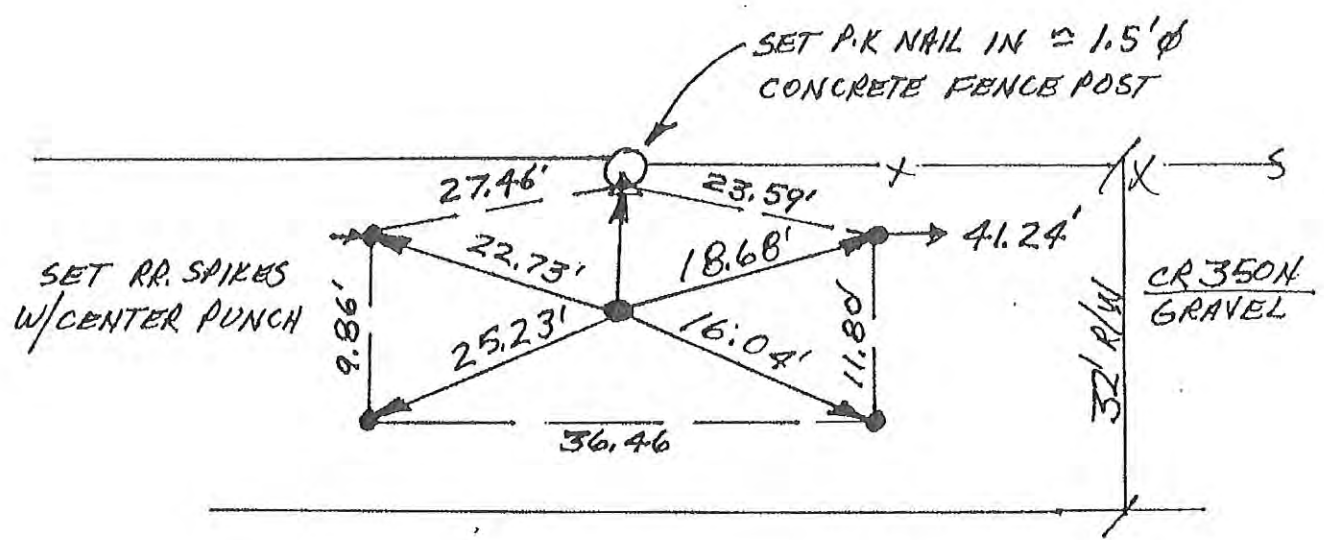
P-14-D=4.28'

5-30-80

Corner A-1 2009 Project

N  
↑  
SCALE

1. THURS. 18 JAN '90 DLA RLS 0537, F. PANICI  $\phi$ ;  
NO METAL SOUNDING, SET REFS; WILL DIG;
2. WED. 24 JAN '90 DUG 8'X10'X3' HOLE, NO POST,  
NO PIT, NO STONES. WILL SET RR. S. W/C.P. @  
R/W SPLIT + POST/FIELD DIVISION.
3. FRI. 2 FEB '90 SET RR. SPIKE W/CENTER PUNCH @  
R/W SPLIT @  $\approx \phi$ . 4' DEEP.

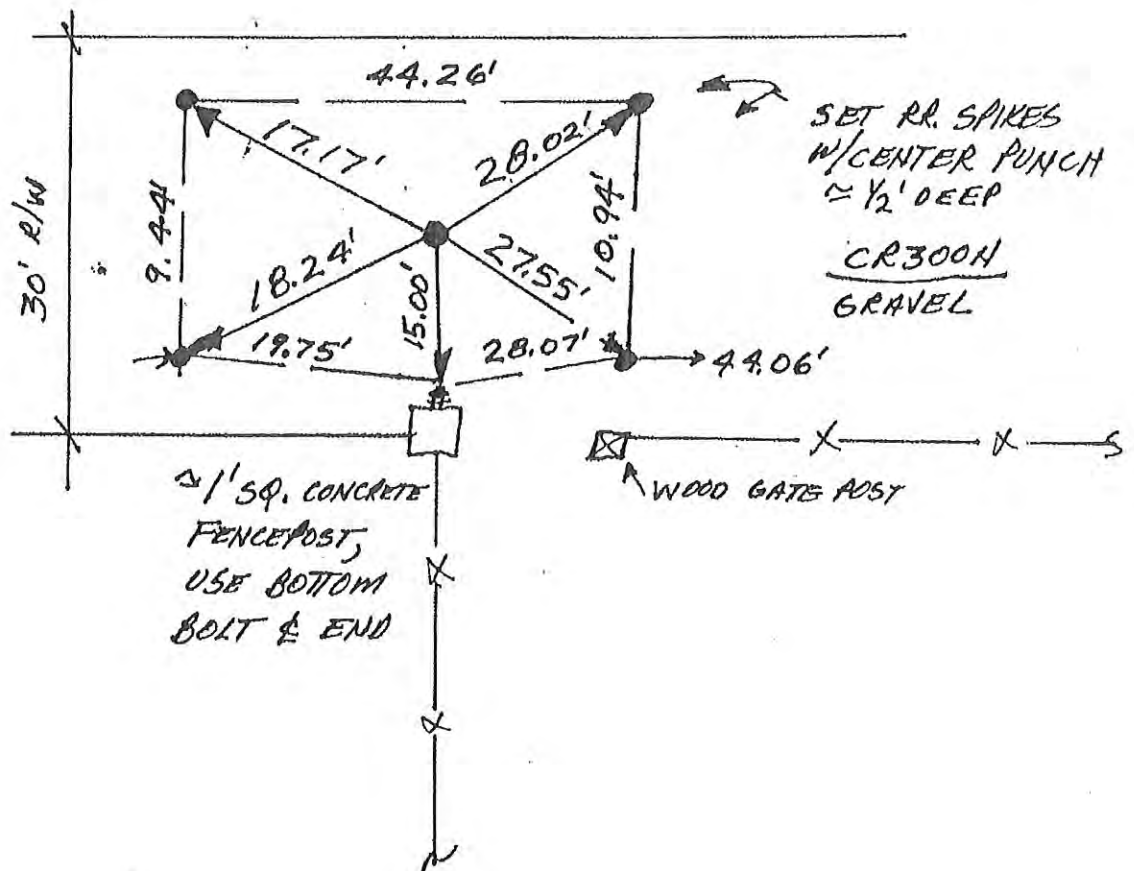


EAST 1/4 COR. SEC. 1  
Corner A-3 2009 Project

P-3

N  
 ↑  
0 SCALE

1. THURS. 18 JAN '90 OLA RLS 0537, F. PANIC I Φ;  
 NO METAL SOUNDING, SET REFS; WILL DIG
2. WED 24 JAN '90 DUB 8' X 6' X 3'-4' DEEP HOLE; NO  
 POST, NO PIT, NO STONE. WILL SET RR. S. W/C.P.  
 @ FENCE + R/W SPLIT.
3. FRI. 2 FEB '90 SET RR. SPIKE W/CENTER PUNCH  
 @ R/W SPLIT. SPIKE ≈ Φ.5' DEEP.



SE. COR. SEC. 1

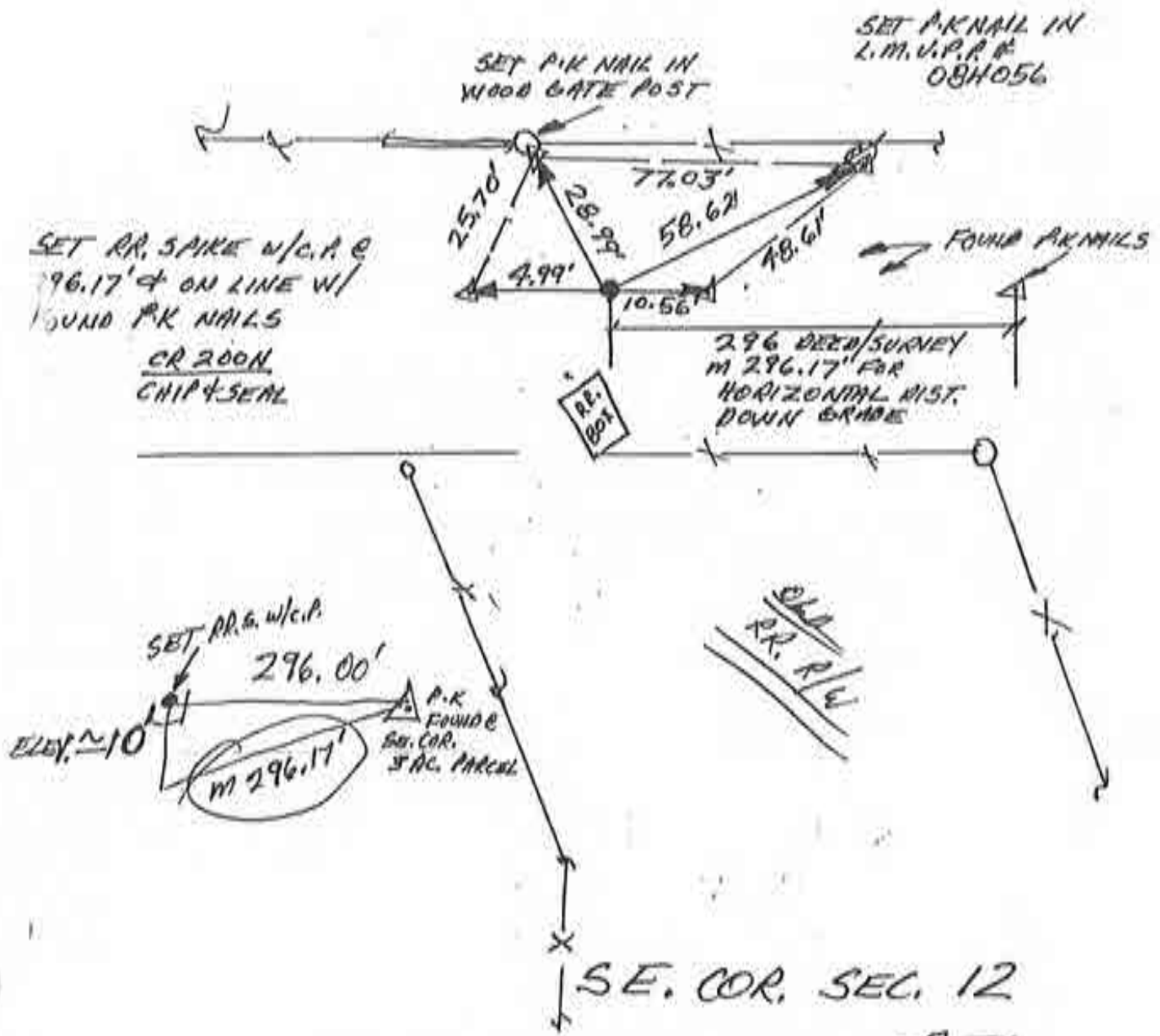
Corner A-5 2009 Project

~~P-4~~



SCALE

1. SUN 4 FEB'90 DLA RLS 0537, F. PANICI  $\phi$ ;  
 SET RR. SPIKE W/CENTER PUNCH @ PLOTROW'S  
~~MAP~~ 30 MAY 1985 SURVEY (MISC. BK. 104,  
 P. 3) RECORD 296' DISTANCE FROM P.K. NAIL  
 FOUND @ SE, COR. OF 3 ACRE PARCEL.  
 HAVE BEEN @ THIS SITE 5 TIMES. NEWPORT  
 HAS NO LOCATION TO REPORT.



Corner A-9 2009 Project ~~P 6~~

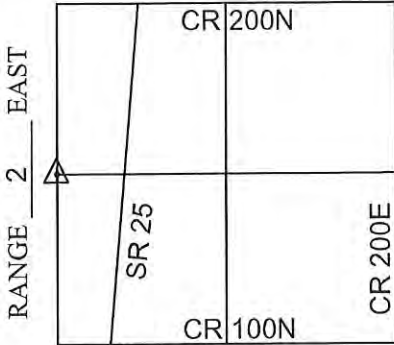


# CORNERSTONE RECORD BOOK

## SITE MAP

SECTION 18

TOWNSHIP 27 NORTH



OFFICE OF THE CASS COUNTY SURVEYOR, LOGANSPORT, INDIANA

CORNER DESCRIPTION: WEST 1/4 CORNER SEC. 18, TWP-27-N, RNG-2-E

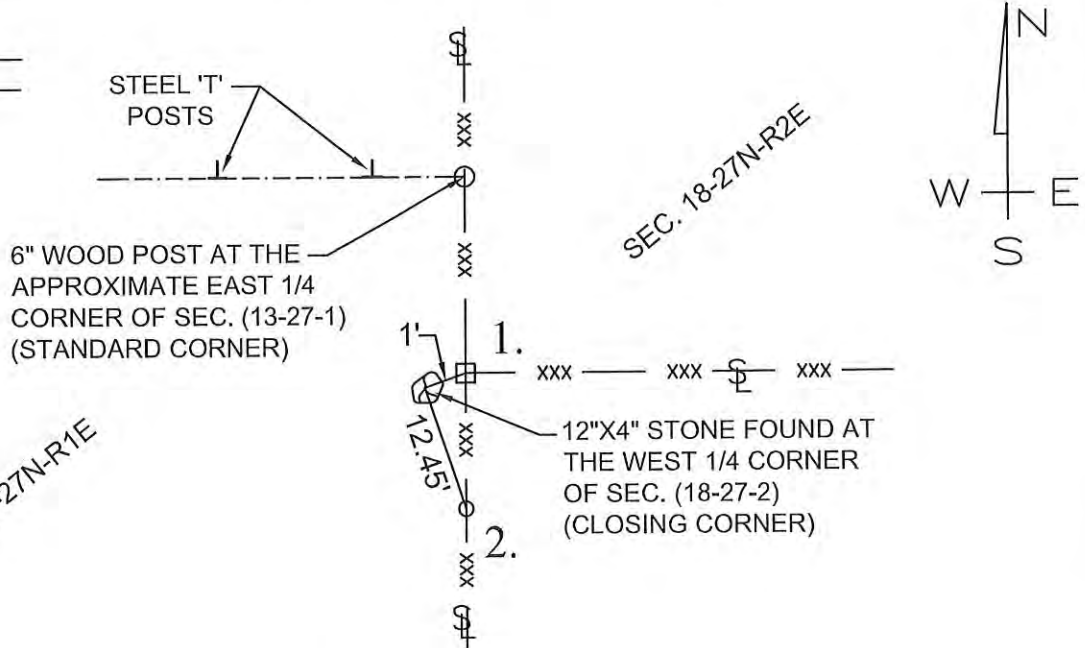
DATE RECOVERED: December 7, 2011

CORNER RECOVERED BY: RANDALL MILLER

**SURVEYOR'S REPORT:**

THE CASS COUNTY RECORDS PROVIDED NO PRIOR EXCAVATION HISTORY FOR THIS CLOSING CORNER. ON DECEMBER 7, 2011, A 12" X 4" STONE WAS FOUND APPROXIMATELY 20" BELOW GRADE WITH DEFINED POINT ON TOP LOCATING THE CORNER LOCATION AND WITH NO CONGRESSIONAL PLS MARKINGS. NEW REFERENCE MONUMENTATION WAS ESTABLISHED. THIS MONUMENT IS A CLOSING CORNER AND PER THE BUREAU OF LAND MANAGEMENT INSTRUCTIONS NEEDS TO BE AMENDED BY THE CONTRACTION OR EXTENSION OF THE MONUMENT'S LOCATION TO THE RANGE LINE. THE AMENDED CORNER IS TO BE SET. A 6" DIAMETER WOOD CORNER POST WAS FOUND AT THE APPROXIMATE EAST QUARTER CORNER OF SECTION 13, TOWNSHIP 27 NORTH, RANGE 1 EAST. THE AREA SURROUNDING THE POST WAS THOROUGHLY SEARCHED AND PROBED. NO STONE WAS FOUND.

Witnessed by: Willie Elliott



MONUMENT SET: 12" X 4" STONE FOUND WITH NO APPARENT ORIGINAL MARKINGS

REFERENCES: 1. 8"X8" WOOD CORNER POST

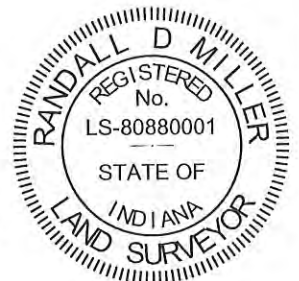
2. 5/8" DIAMETER IRON REBAR SET FLUSH WITH GRADE IN FENCE LINE

3. \_\_\_\_\_

**CERTIFICATION:**

I, THE UNDERSIGNED, RANDALL MILLER, A LAND SURVEYOR REGISTERED IN THE STATE OF INDIANA UNDER I.C. 25-31, DO HEREBY CERTIFY THAT I HAVE RECOVERED THE CORNER HEREON SHOWN AND DESCRIBED.

*Randall Miller*  
 RANDALL D. MILLER  
 R.L.S. #880001



# CORNERSTONE RECORD BOOK

## SITE MAP

SECTION 18

TOWNSHIP 27 NORTH



Witnessed by: Willie Ellison

OFFICE OF THE CASS COUNTY SURVEYOR, LOGANSPORT, INDIANA

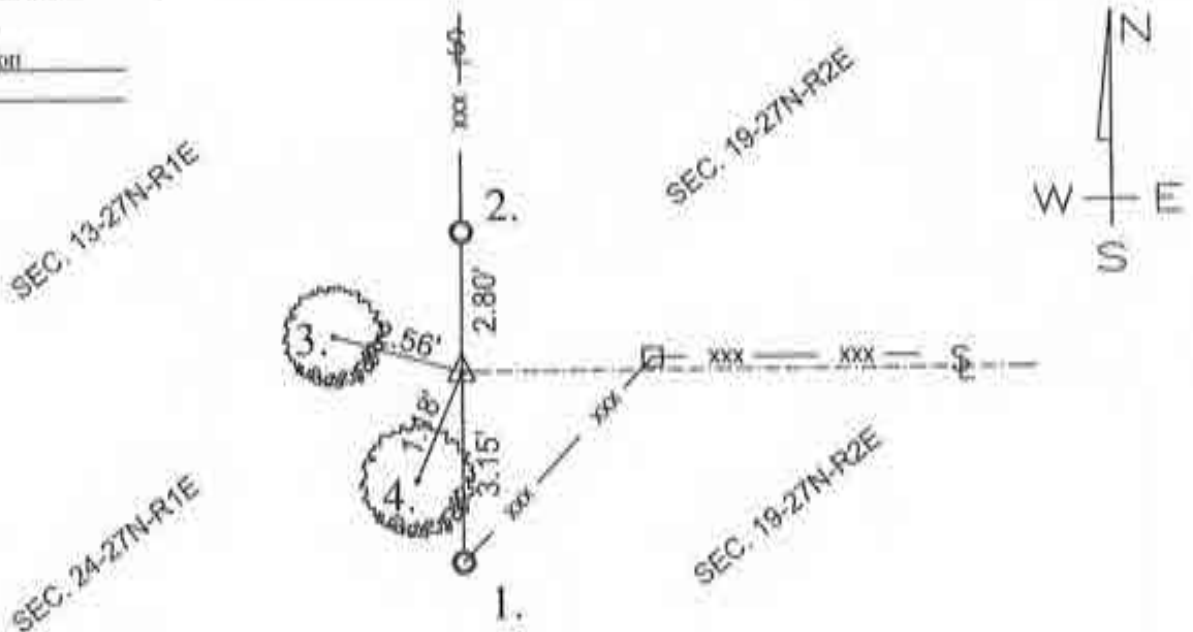
CORNER DESCRIPTION: SW CORNER SEC. 18, TWP-27-N, RNG-2-E

DATE RECOVERED: December 8, 2011

CORNER RECOVERED BY: RANDALL MILLER

### SURVEYOR'S REPORT:

THE CASS COUNTY RECORDS PROVIDED NO PRIOR EXCAVATION HISTORY FOR THIS CORNER. ON DECEMBER 8, 2011, A 1" DIAMETER IRON PIPE WAS FOUND APPROXIMATELY 3" ABOVE GRADE AND AT THE APPROXIMATE INTERSECTION OF FENCE LINES SITUATE NORTH, SOUTH AND EAST FROM ITS LOCATION. THE AREA SURROUNDING THE PIPE WAS THOROUGHLY SEARCHED AND PROBED. NO STONE OR EVIDENCE WAS FOUND. NEW REFERENCE MONUMENTATION WAS ESTABLISHED, AS SHOWN. THIS MONUMENT IS BEING HELD AS THE BEST AVAILABLE EVIDENCE OF THE CORNER AND MEETS THE REQUIREMENTS FOR A COMMON CORNER LOCATION. THIS CORNER IS A CLOSING CORNER AND PER THE BUREAU OF LAND MANAGEMENT INSTRUCTIONS NEEDS TO BE AMENDED BY THE CONTRACTION OR EXTENSION OF THE MONUMENT'S LOCATION TO THE RANGE LINE. THE AMENDED CORNER SHOULD BE SET IN THE FUTURE.



MONUMENT SET: 1" DIAMETER IRON PIPE FOUND 3" ABOVE GRADE

REFERENCES: 1. NORTH FACE OF 3" DIAMETER STEEL CORNER POST

2. SOUTH FACE OF 3" DIAMETER STEEL CORNER POST

3. MAG NAIL SET IN SE FACE OF 6" DIAMETER TREE

4. MAG NAIL SET IN NE FACE OF 8" DIAMETER TREE

### CERTIFICATION:

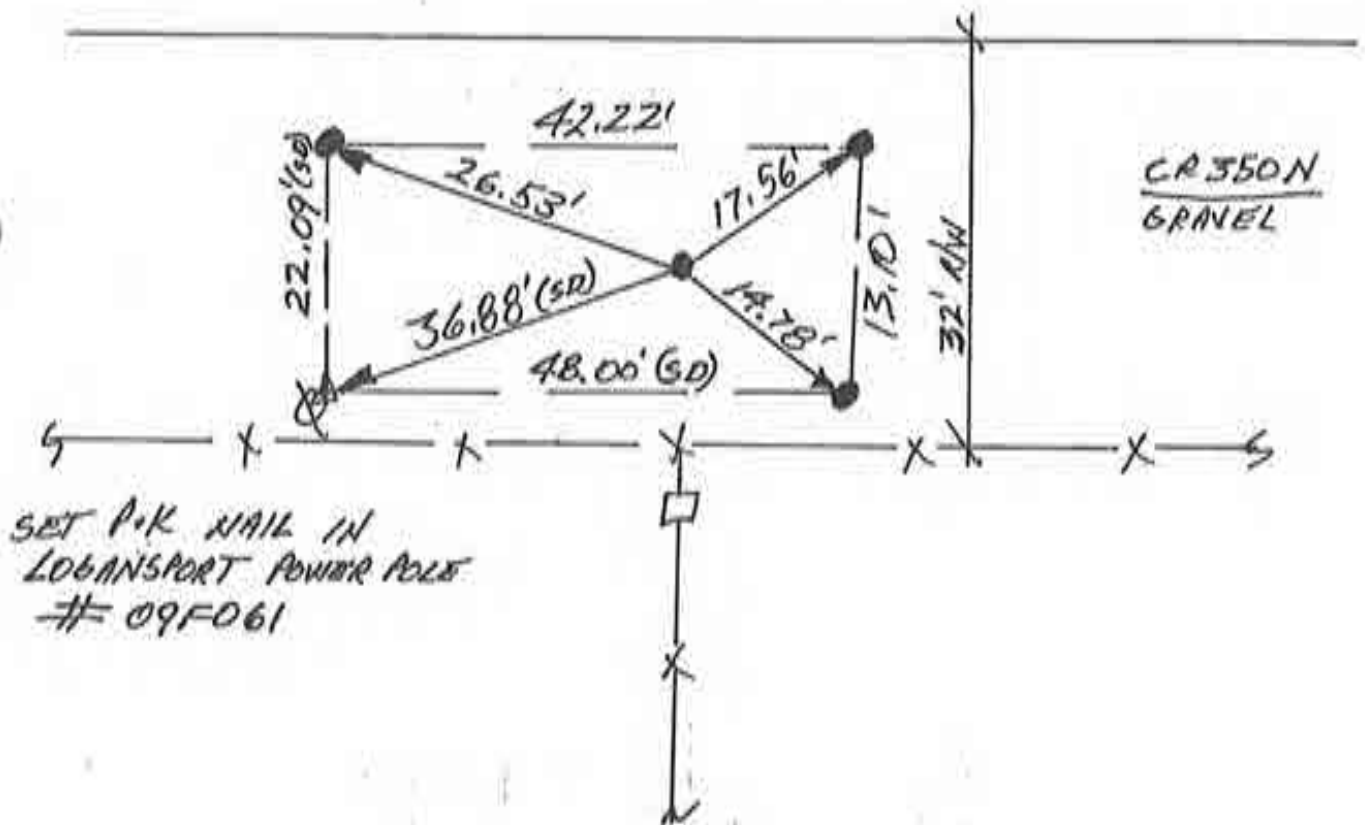
I, THE UNDERSIGNED, RANDALL MILLER, A LAND SURVEYOR REGISTERED IN THE STATE OF INDIANA UNDER I.C. 25-31, DO HEREBY CERTIFY THAT I HAVE RECOVERED THE CORNER HEREON SHOWN AND DESCRIBED.

*Randall Miller*  
 RANDALL D. MILLER  
 R.L.S. #880001



N  
↑  
NO SCALE

1. THURS. 15 MARCH '90 DLA RLS 0537, F. PANICIA,  
NO METAL BOUNDING; SET RR. SPIKE W/ CENTER  
PUNCH & R/W SPLIT; SET RR.S. W/C.A. REFS.



Corner C-3 2009 Project  
"CENTER" SEC 6

- See RF-0001-CA -

~~11~~ 11



# Section Corner Verification

0001

SECTION 6, TOWNSHIP 27N, RANGE 2E

(Description of Corner Location) "Center"

TOWNSHIP Clay, CASS COUNTY, INDIANA

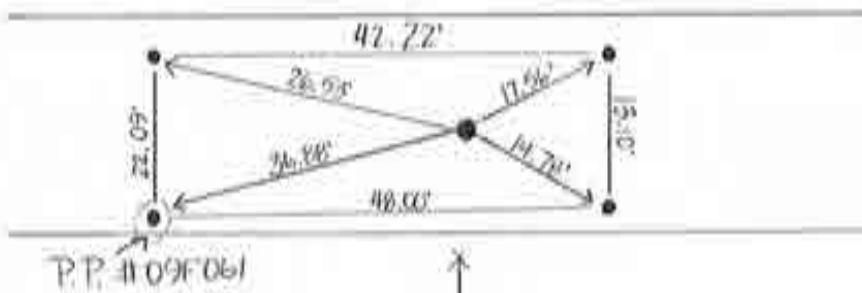
TYPE OF MONUMENT: Railroad Spike - Dimple

DEPTH: 5"

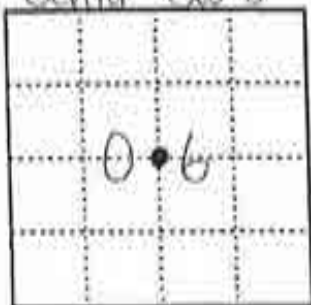
BY: L. Billman, M. Pickering

DATE: May 14, 1999

CR 350 N  
Gravel Rd.

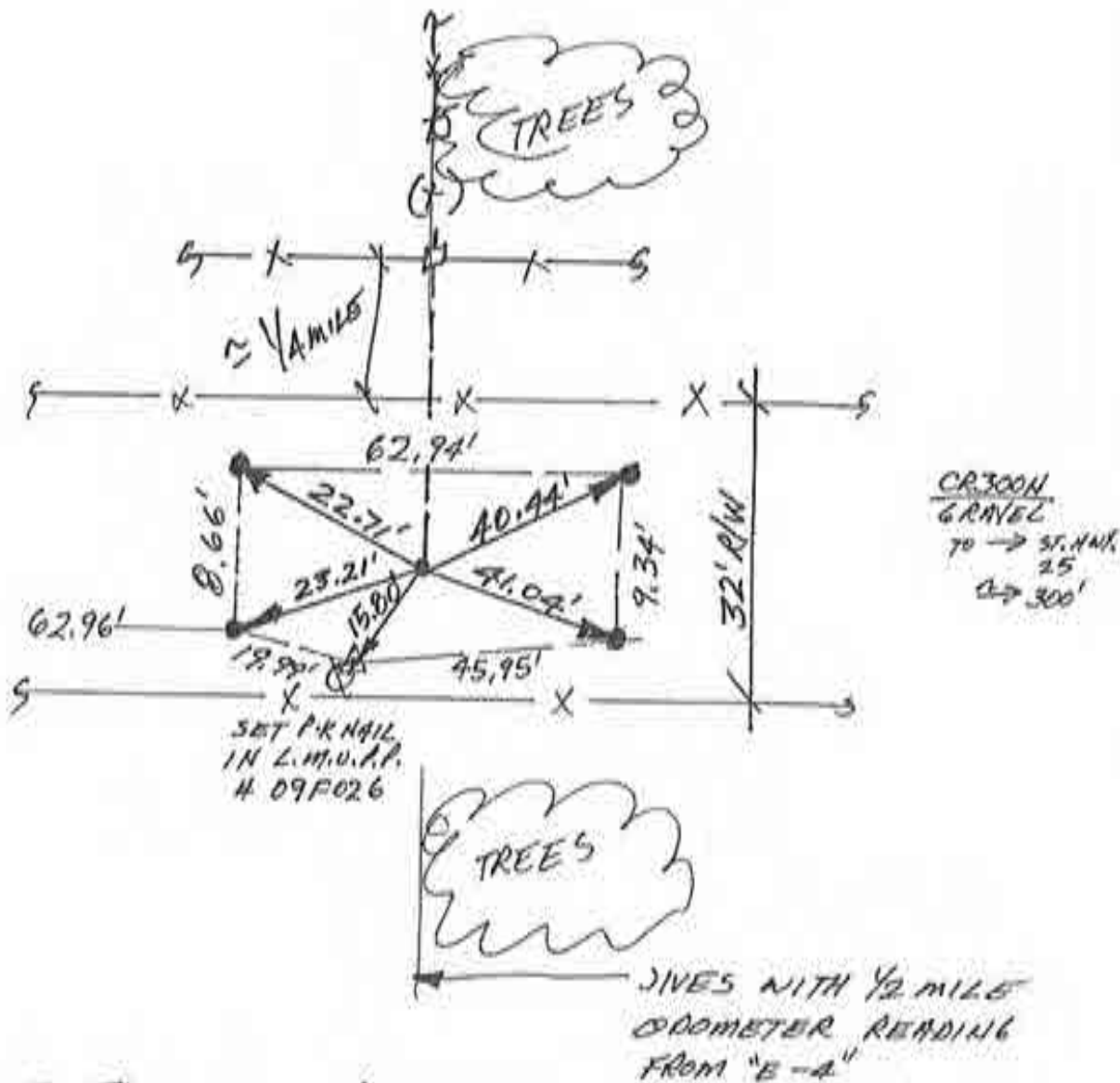


Center Sec 6



N  
↑  
NO SCALE

1. TUE'S 27 MARCH '90 DLA RLS 0537, F. PANICID;  
NO METAL SOUNDING @ BISTANT FIELD DIVISIONS;  
SET REFS, WILL DIG
2. SUN 8 APRIL '90 DUB 16' X 4.5' X 4' DEEP HOLE;  
NO POST, NO PIT, NO STONE.



3. THURS. 26 APRIL '90 - WENT TO WOODS TO THE  
NORTH & ALIGNED & PROJECTED SOUTH TO  
R/W SPLIT. NOTE: OUR DIG DID NOT ENCOMPASS  
THIS LOCATION, BUT DIG WOULD HAVE TO HAVE  
BEEN ≈ 10' TO GET DOWN ENOUGH. SET RR. G. W/C.P.

Corner C-5 2009 Project SOUTH 1/4 COR. SEC. 6

- See RF-0002-CA -

~~D4~~

# Section Corner Verification

0002

SECTION 6, TOWNSHIP 21N, RANGE 2E

(Description of Corner Location) South 1/4 Corner

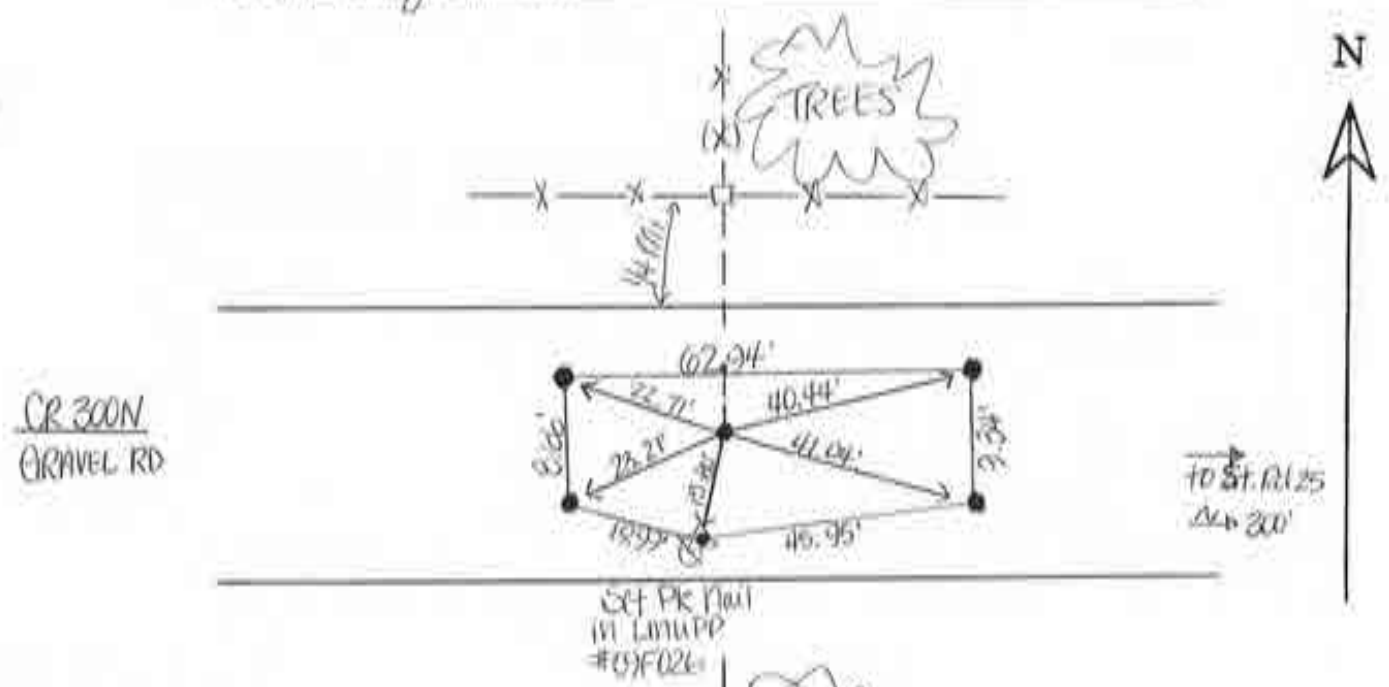
TOWNSHIP Clay, CASS COUNTY, INDIANA

TYPE OF MONUMENT: Railroad Spike

DEPTH: 6"

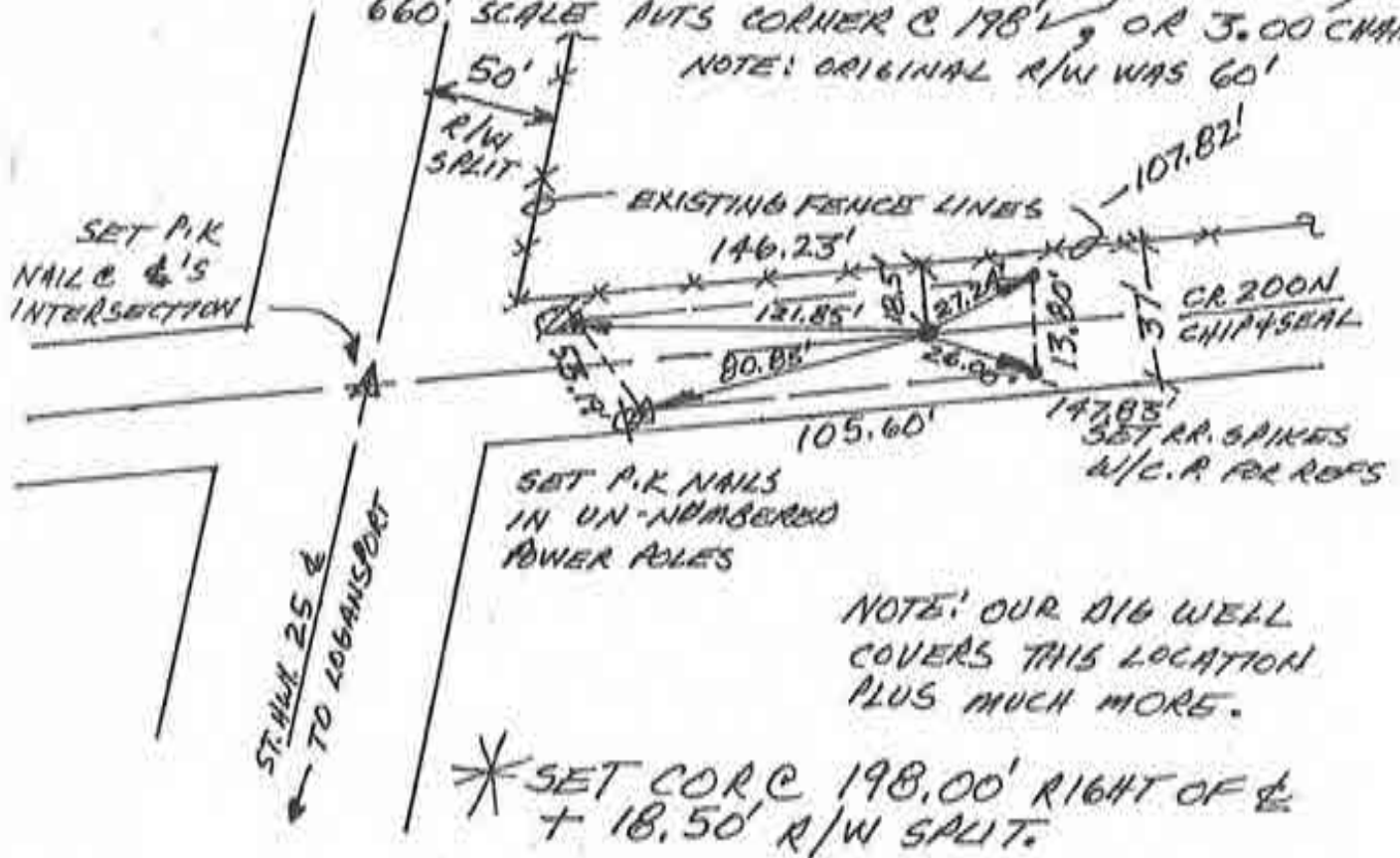
BY: L. Billman, J. Cripe, M. Pickering

DATE: May 20, 1979



N  
NO SCALE

1. TUES. 27 MARCH '90 DIA RLS 0537, F. PANICI & NO METAL SOUNDING @ 2 AREA. NEW BUILDING SITE BY YANTIS (OLD SNYDER FARM) WAS SURVEYED NOV '89 BY NEWPORT - NO RECORD IN SURVEYOR'S PLAT BOOK - WILL CHECK WITH NEWPORT
2. SUN 8 APRIL '90 DUG 12' X 5' X 3.5' DEEP HOLE @ ST. HWY 25'S PLANS 3 CHAINS EAST OF THEIR  $\frac{1}{2}$ . FOUND NO PIT, NO POST, NO STONE.
3. THURS. 26 APRIL '90 - NEWPORT'S SURVEY DOES NOT PLACE CORNER. SET RR. SPIKE W/CENTER PUNCH PER ST. HWY. 25 PLANS (FED. AID PROJ. NO. 152, FISCAL YEAR 1928, SHEET NO. 5094B, STA. 168+17 + 198.00' RIGHT OF HWY.  $\frac{1}{2}$ ). PLANS CITE "1/2 SEC. COR 300 CHAINS RT OF  $\frac{1}{2}$ ", WHICH WOULD BE 19,800'. AIR PHOTO BEY-3DD-119, 5-25-63, 660' SCALE PUTS CORNER @ 198', OR 3.00 CHAINS. +  
NOTE: ORIGINAL R/W WAS 60'



NORTH 1/4 COR. SEC. 18

Corner C-9 2009 Project

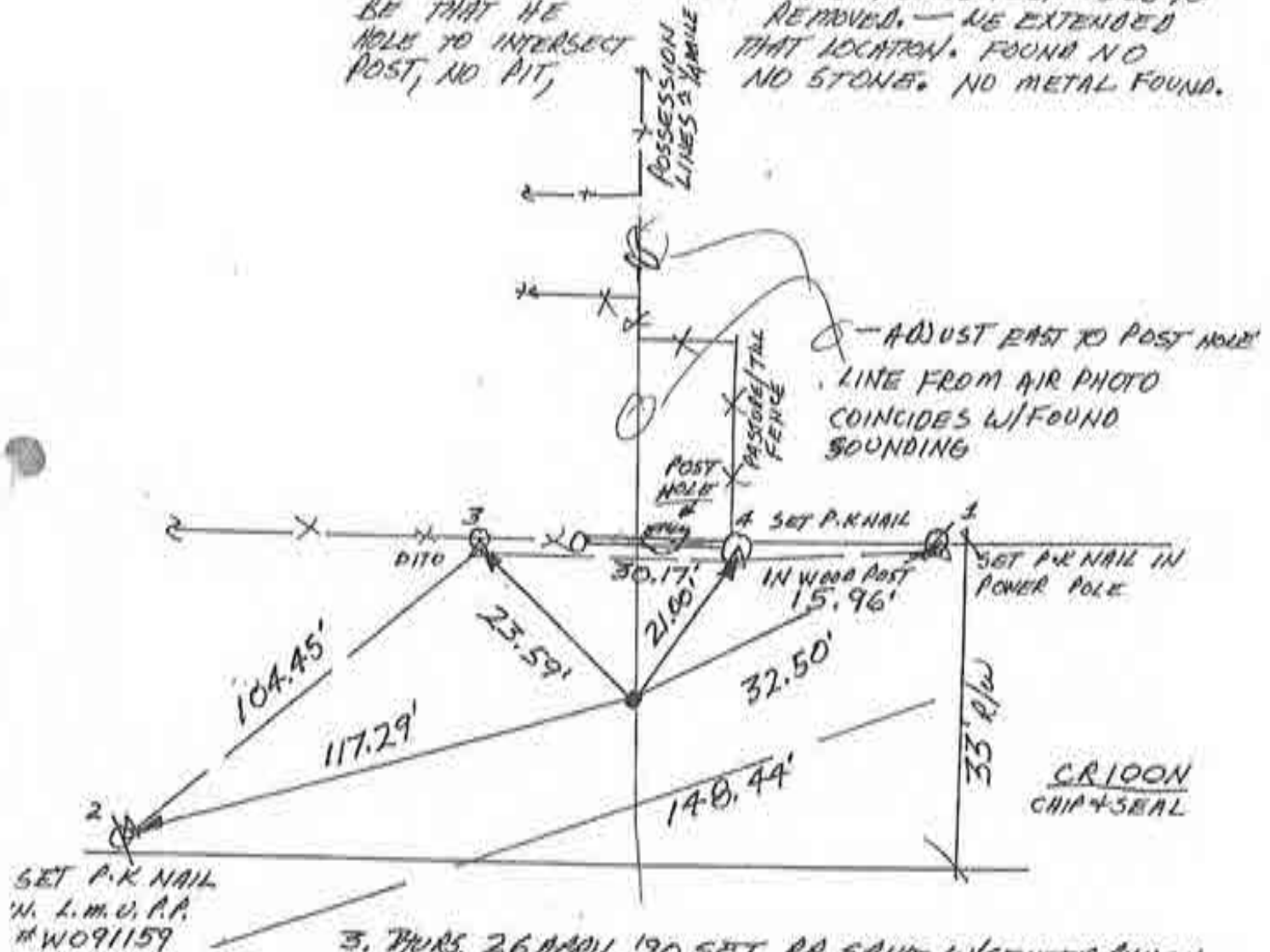




SCALE

1. MON 2 APR '90 DLA RLS 0537 F. PANICI & J. FOUND POSSIBLE METAL SOUNDING @ R/W SPLIT & FIELD DIVISION. DUB @ 3' & FOUND NO DEVICE. SOUNDING STILL OCCURS. SET REFS, WILL DIG. SOUNDING REFS  $\rightarrow$  1 = 46.72'; 2 = 102.14'; 3 = 16.44'; 4 = 32.87'.

2. SUN. 8 APRIL '90 DUB 20' X 20' HOLE, EXTENDED FOR PETE WAGNER, ADJACENT RESIDENT WHO @ SHOWED US HOLE WHERE SECTION LINE FENCE POST USED TO BE THAT HE REMOVED. - HE EXTENDED HOLE TO INTERSECT POST, NO PIT, NO STONE. NO METAL FOUND.



3. THURS. 26 APRIL '90 SET RR. SPIKE W/CENTER PUNCH @ POST HOLE + NORTH FENCE FIELD DIVISION

SOUTH 1/4 COR. SEC. 18

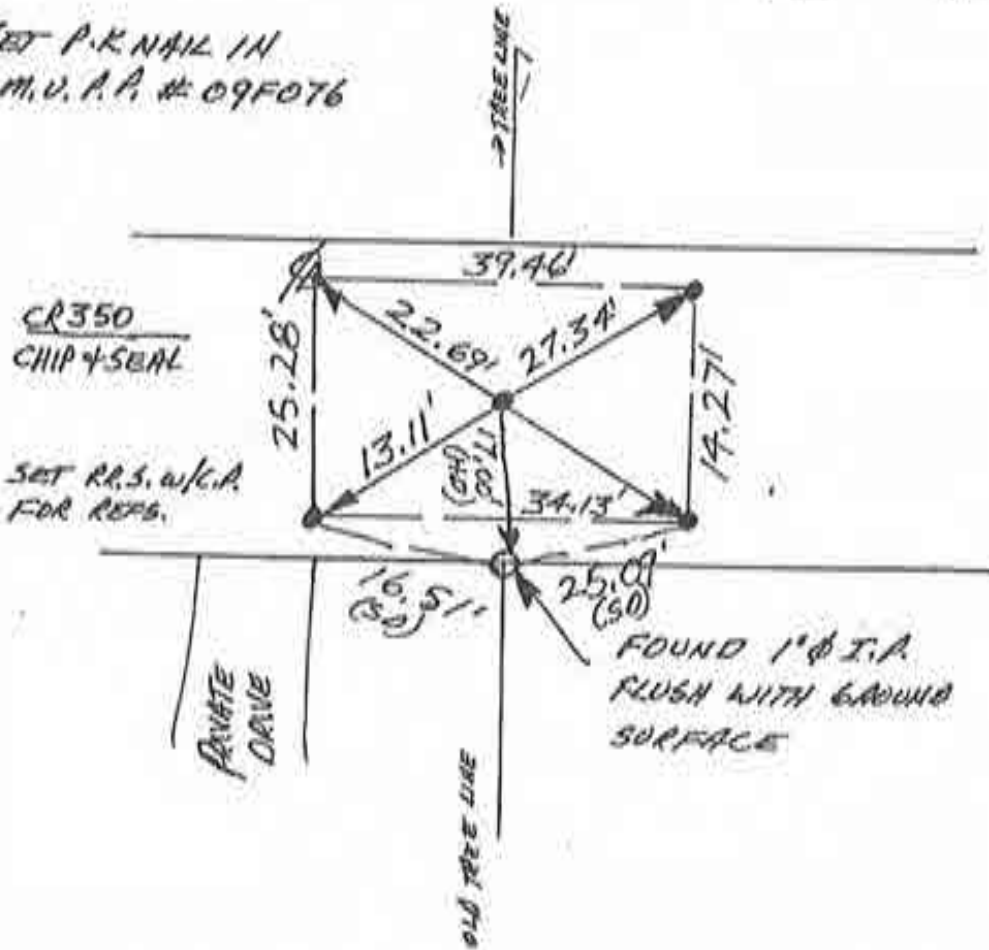




N  
 NO SCALE

1. THURS. 15 MARCH '90 OLD ALS 0537, F. PANICI  $\phi$ ; NO METAL SOUNDING, WILL NOT DIG DUE TO EXCESSIVE ROAD CUT ( $\approx 5'$ ). PLOTNOW HAS MANY SURVEYS IN ALL DIRECTIONS, WILL REPRODUCE CORNER FROM HIS SURVEYS FROM SE. COR. NW-1/4 S. 5.
2. FRI. 16 MARCH '90 SET RR. SPIRE W/CENTER PUNCH & POSITION REPRODUCED FROM PLOTNOW'S SURVEYS

SET P.R. NAIL IN  
 L.M.V. A.P. # 09F076



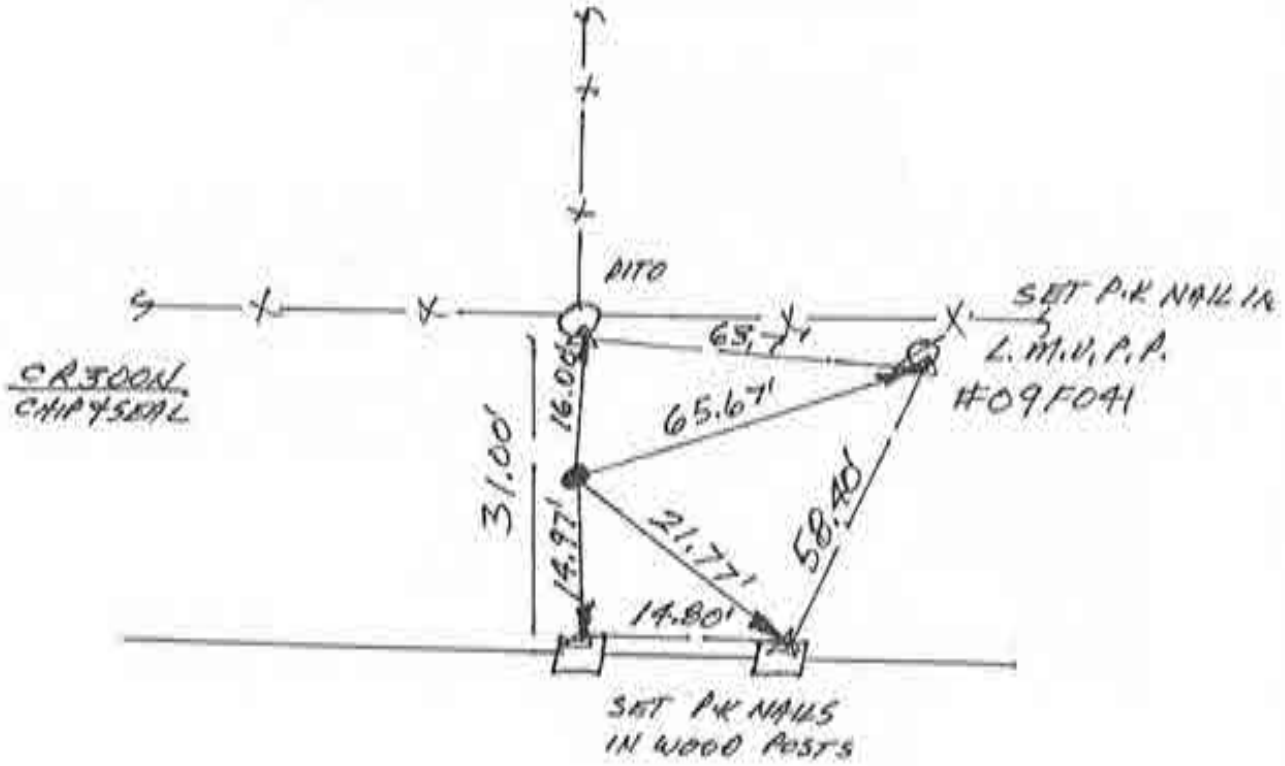
(2. CONT'D) FOUND IN RECORDER'S MISC. BK. 85, P. 510; M.B. 69, P. 163, AND MY SURVEY OF "PENMAN'S HOME" & M.B. 120, P. 602.

WEST 1/4 COR. SEC. 5

Corner E-3 2009 Project ~~E-3~~

N  
NO SCALE

1. TUES 27 MARCH 70 DLB RLS 0537, F. PANICI &  
 FOUND RR. SPIKE @ R/W SPIT @ FIELD DIVISION.  
 GROUND IS SWAMPY WITH STAGNATE WATER IN DITCH  
 TO NORTH. DIGGING HERE WOULD DRAW WATER  
 INTO PIT. ∴ TOOK FOUND SPIKE AS BEST EVIDENCE  
 CENTER PUNCHED SPIKE & SET REFS.



Corner E-5 2009 Project

NW. COR. SEC. 8

- See RF-0003-CA -

~~XXXXXXXXXX~~

# Section Corner Verification

0003

SECTION 8, TOWNSHIP 27, RANGE 2E

(Description of Corner Location) NW Cor.

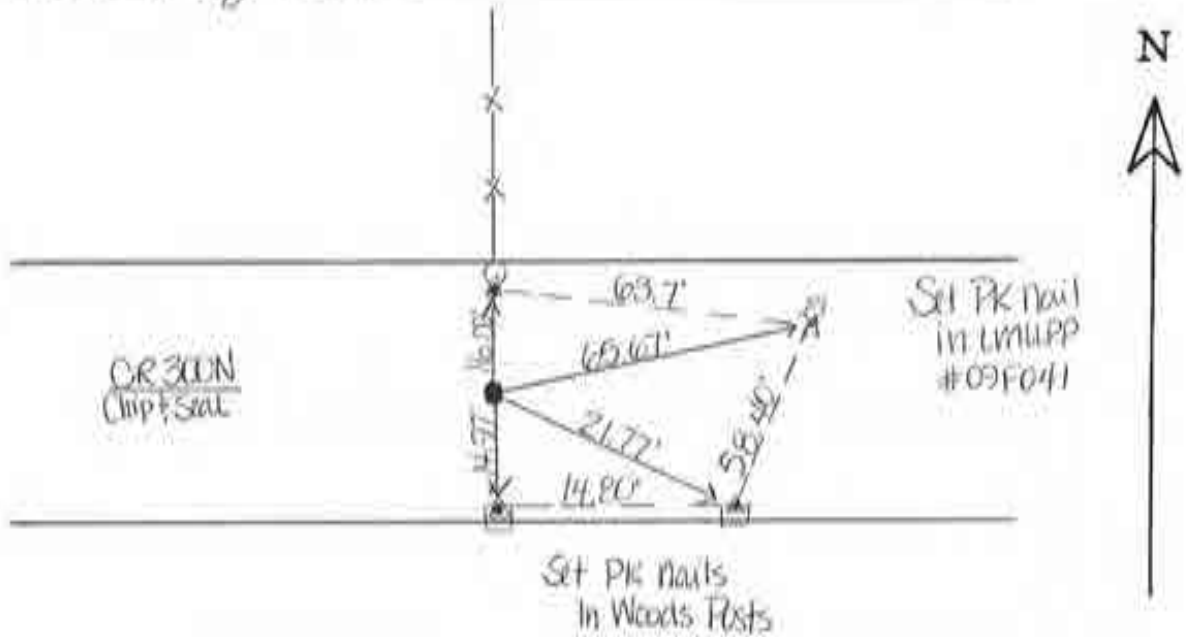
TOWNSHIP Clay, CASS COUNTY, INDIANA

TYPE OF MONUMENT: Railroad Spike

DEPTH: \_\_\_\_\_

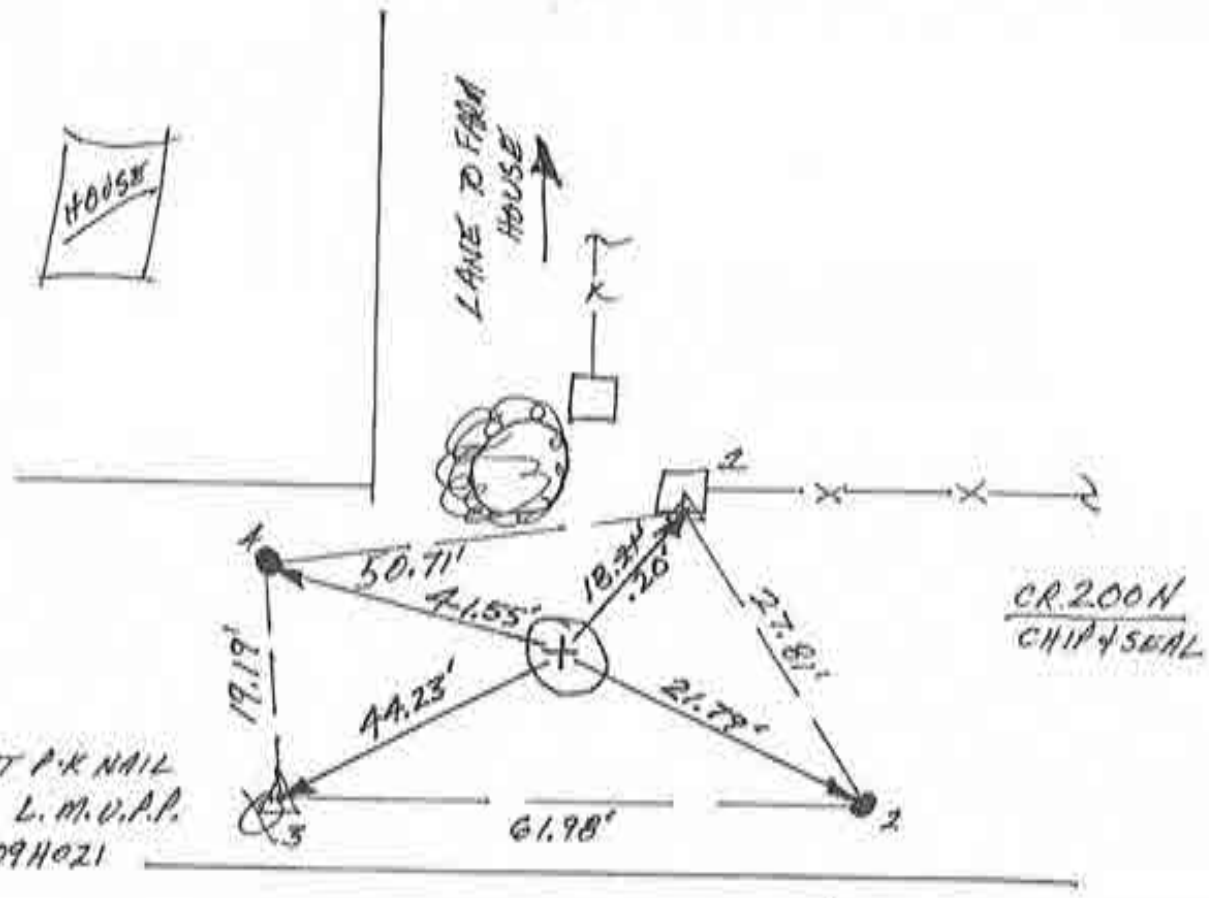
BY: L. Billman, J. Cripe, M. Pickering

DATE: May 20, 1999



N  
NO SCALE

1. TUES. 27 MARCH '90 OLA RLS 0537, F. PANICI  $\phi$ ;  
 FOUND RR. SPIKE @  $\approx$  R/W SAUT + FIELD DIVISION.  
 SET REFS.; WILL DIG. F. RR.S. REFS  $\approx$  1 = 18.06' ;  
 2 = 21.31' ; 3 = 44.67' ; 4 = 42.05'



2. SUN 8 APRIL '90 FOUND 1.5' X 4' X 1' TRIANGULAR  
 STONE LYING ON ITS SIDE WITH "+" CHISELED IN  
 CENTER OF MASS. REF'D. "+"  
 3. MON 23 APRIL '90 SET RR. SPIKE W/CENTER PUNCH  
 @ "+" REFS.

Corner E-9 2009 Project  
 SE. COR. SEC. 7

- See RF-0005-CA -

# Section Corner Verification

0005

SECTION 7, TOWNSHIP 27N, RANGE 2E

(Description of Corner Location) SE Corner

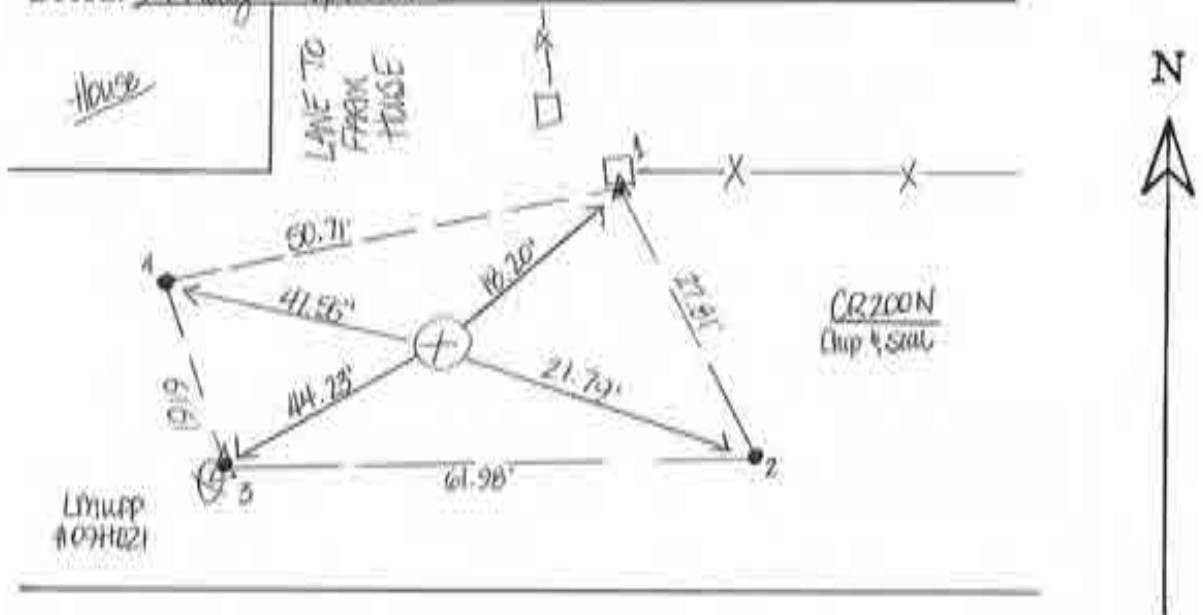
TOWNSHIP Clay, CASS COUNTY, INDIANA

TYPE OF MONUMENT: Railroad spike (flush pt)

DEPTH: \_\_\_\_\_

BY: L. Billman, J. Cripe, M. Pickering

DATE: May 27, 1999



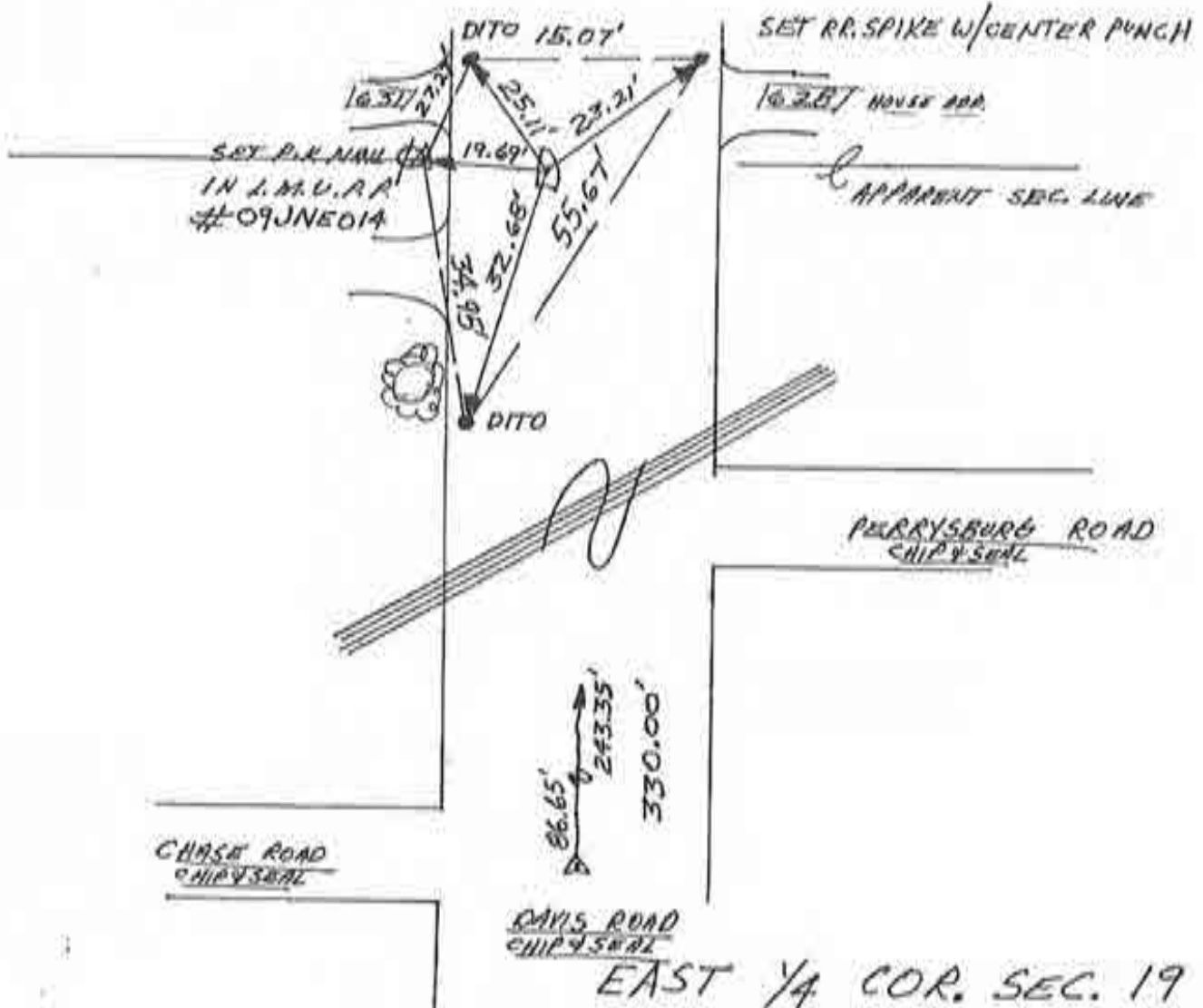






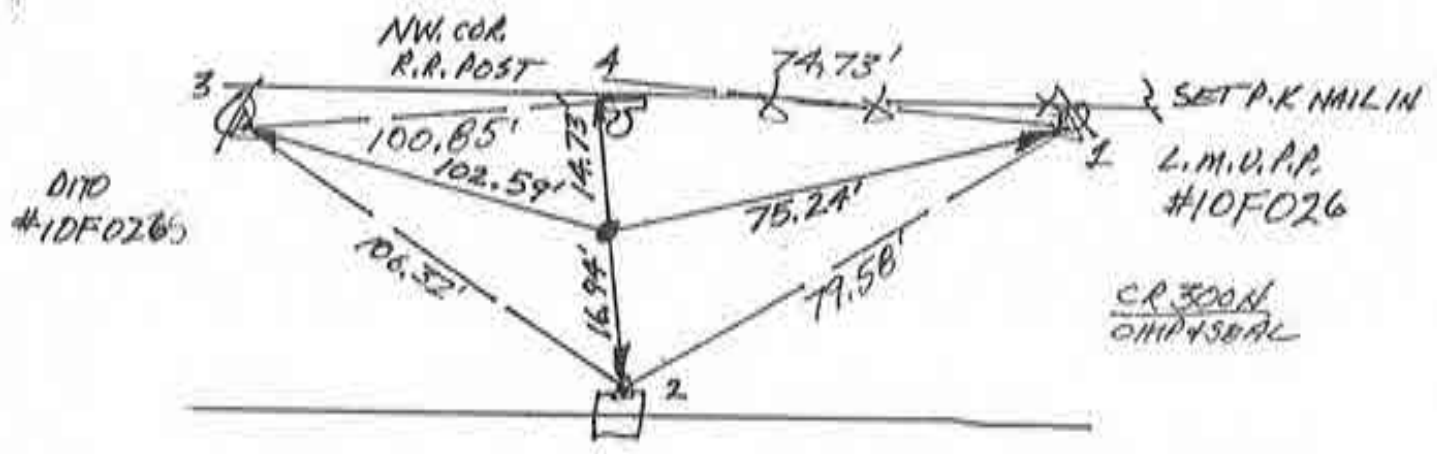
SCALE

1. MON 2 APR 190 DLA RLS 0537, F. PANICI  $\phi$ ; RETRACED  $\phi$ 'S 86.65' APPROX. OF CHASE RD. TO PERRYSBURG RD. AS SHOWN ON MURPHY'S 24 AUG 1965 SURVEY + 243.35' TO CORNER & FOUND NO METAL SOUNDING. (86.65' + 243.35' = 330'  $\approx$  FRACTIONAL DISTANCE). 1,507' CALL IS FOUND AGAIN AS 1,508.50' SOUTH OF CORNER BY NEWPORT 23 JUNE '81 MISC. 117, PAGE 670. 330' IS USED BY PLOTHOW  $\phi$  1 MAR '74 M.  $\phi$  15, P. 651; 9 OCT '72 M. 116, P. 262; 3 DEC '74 M. 77, P. 419. **FOUND** P.K. NAIL  $\phi$  & INTERSECT CHASE & DAVIS, MEASURED 350' NORTH & FELL LESS THAN  $\phi$ .5' FROM APPROXIMATELY. NO METAL SOUNDING. SET REFS, WILL DIG
2. SUN 8 APRIL FOUND 1' X 1' X  $\phi$ .E' TRIANGULAR STONE WITH POINT UP W/NO MARKINGS; REF'D. POINT. STONE IS  $\approx$  .5' DEEP - JUST UNDER BOTTOM (SECOND LAYER DOWN) ASPHALT SURFACE. STONE IS VERY NEAR 330' MARK.
3. THURS 26 APRIL 190 SET RR. SPIKE W/CENTER PUNCH @ STONE'S REFS.



N  
↑  
1/10 SCALE

1. THURS. 16 MARCH '90 DLA RL5 0537; F. PANIC 9.  
FOUND RR. SPIKE IN LINE W/ FENCES @  
R/W SPLIT. SET REFS. WILL DIG. W  
F.S. 1 = 75.71'; 2 = 15.85'; 3 = 102.43'; 4 = 15.86'  
(39')
2. SAT 7 APRIL '90 FOUND 1.5' φ, FLAT STONE @ 8'  
DEPT WITH VERY DISTINCT "+" IN TOP, MIDDLE W/ "H1"  
CHISELED IN SW. COR. 1 = 75.24'; 2 = 16.94';  
3. = 102.59'; 4 = 14.73'.



3. WED 25 APRIL '90 SET RR SPIKE W/ CENTER  
PUNCH @ STONE'S "+" REF'S.

Corner G-5 2009 Project

SOUTH 1/4 COR. SEC. 5

- See RF-0004-CA -





# Section Corner Verification

0004

SECTION 5, TOWNSHIP 27N, RANGE 2E

(Description of Corner Location) South 1/4 Cor.

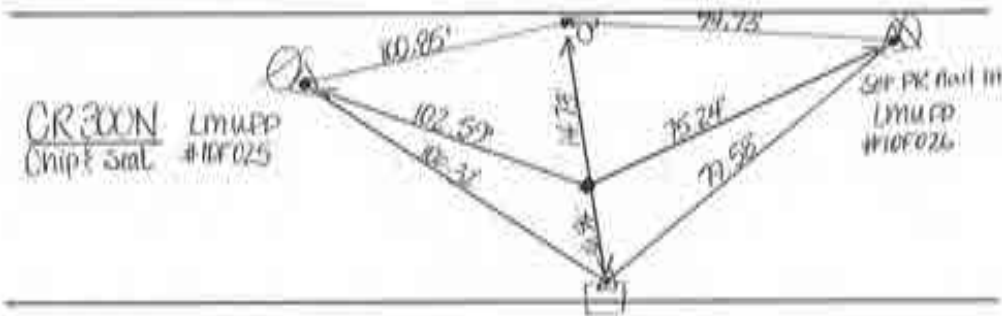
TOWNSHIP Clay, CASS COUNTY, INDIANA

TYPE OF MONUMENT: Railroad spike

DEPTH: \_\_\_\_\_

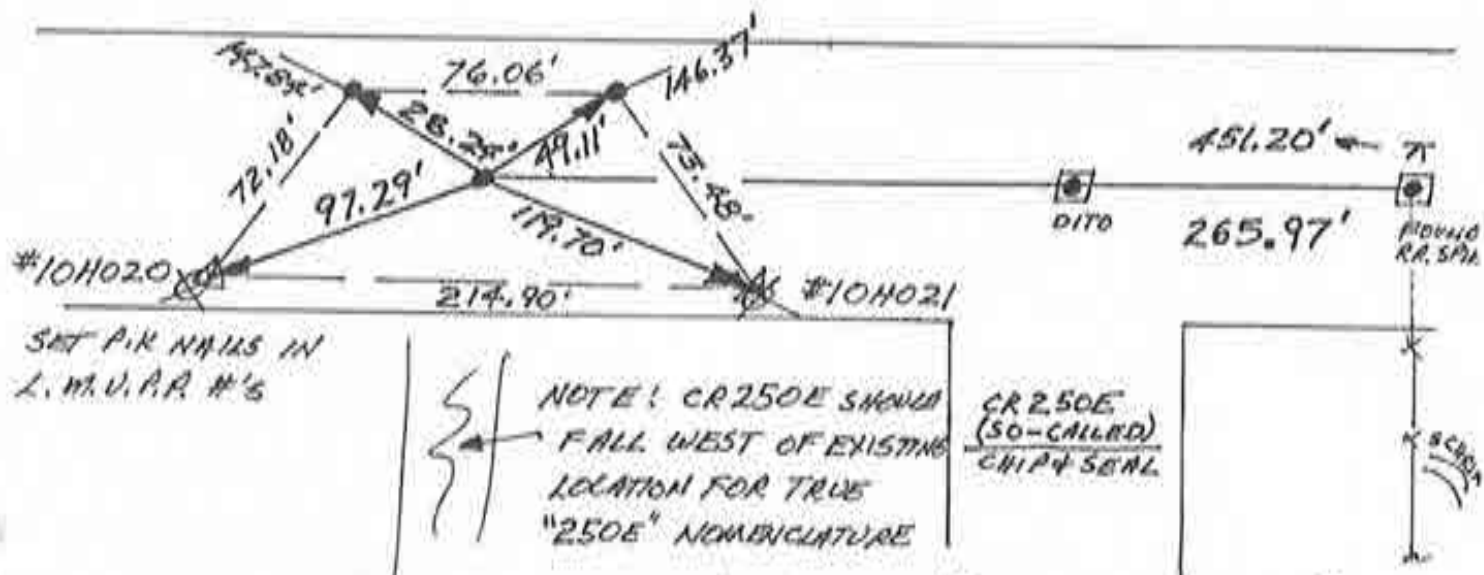
BY: L. Billman, J. Cripe, M. Pickering

DATE: May 20, 1979



N  
 NO SCALE

1. TUES 27 MARCH '90 OLA RLS 0537, F. PANICI ♂;  
 NO METAL SOUNDING @ AIR PHOTO POSITION; FOUND  
 RR SPIKE @ CA "250"E & CR200N INTERSECTION.  
 HOWEVER MURPHY'S FLAT MAP & AIR PHOTO  
 SHOW CA "250"E EAST OF POSITION. WILL  
 REVIEW ADJACENT DEEDS.
2. WED 4 APRIL '90 FOUND RR SPIKE SOUNDING @ NW COR.  
 OF BARBARA J. SCHIRM PROPERTY SURVEY BY NEWPORT  
 @ 25 FEB 1983; + MISC. 98, p. 150 & M. 240, p. 24;  
 MEASURED SURVEY'S 451.2' WEST TO SUBJECT POSITION  
 & FOUND NO METAL SOUNDING. WILL DIG.
3. SUN 8 APRIL '90 DUG 8' X 5' X 4' JAZZED HOLE -  
 NO POST, NO PIT, NO STONE. WILL BUILD  
 CORNER FROM SCHIRM SURVEY.
4. WED. 25 APRIL '90 SET RR SPIKE W/CENTER PUNCH @  
 451.20' WEST OF SCHIRM'S NW COR. & ON LINE WITH  
 SPIKE FOUND @ INTERSECTION



Corner G-9 2009 Project SOUTH 1/4 COR. SEC. 8

- See RF. 0006. CA -



# Section Corner Verification

0006

SECTION 8, TOWNSHIP 27N, RANGE 2E

(Description of Corner Location) South 1/4 Corner

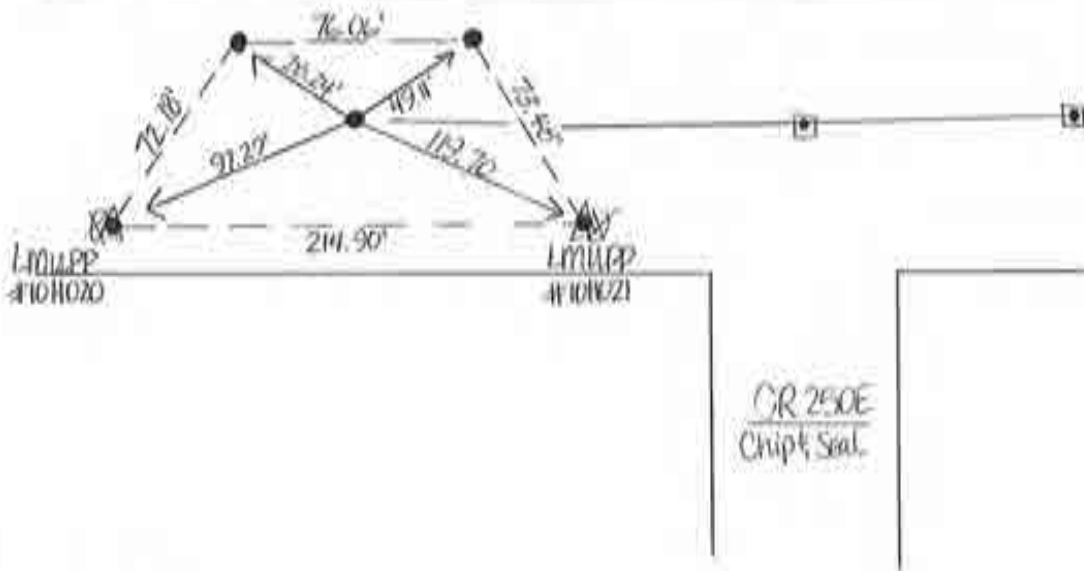
TOWNSHIP Clay, CASS COUNTY, INDIANA

TYPE OF MONUMENT: Railroad Spike

DEPTH: \_\_\_\_\_

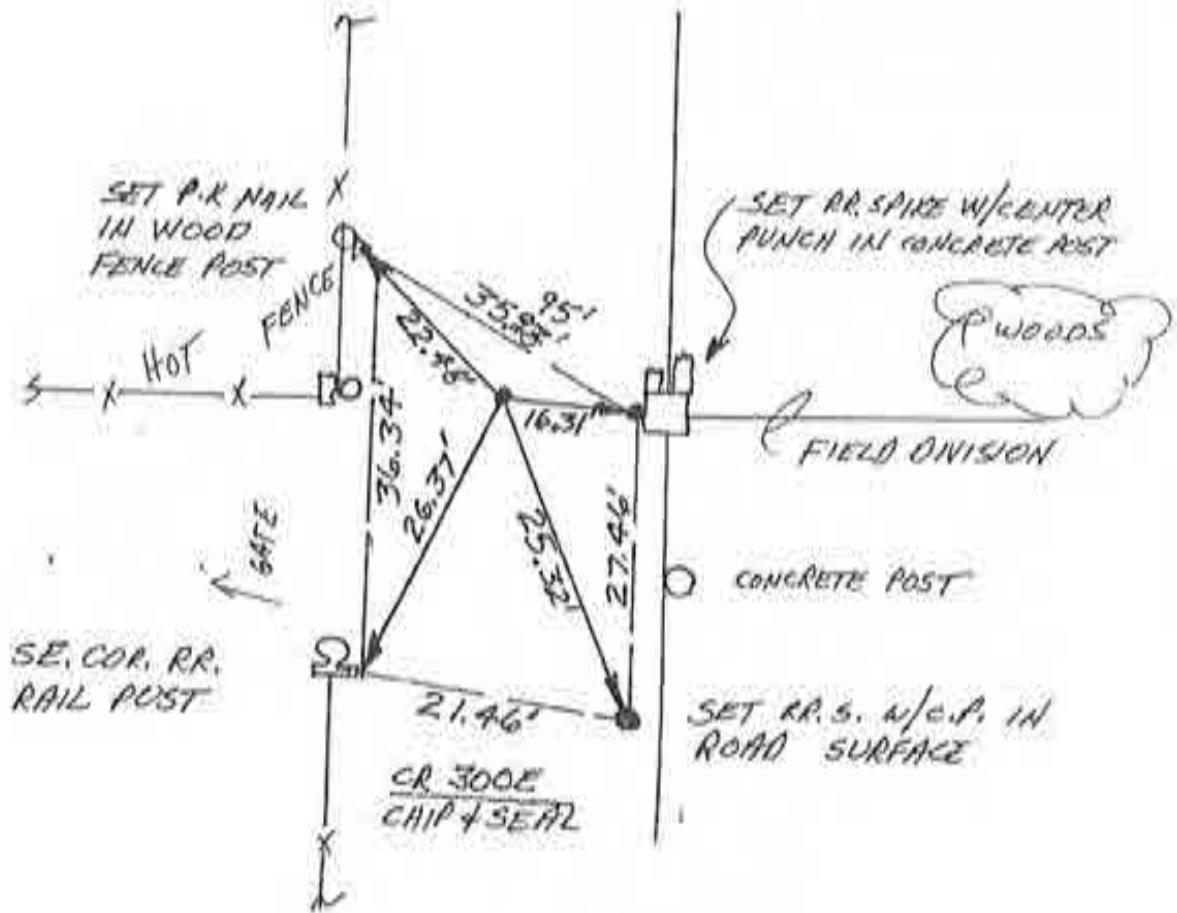
BY: L. Billman, J. Cripe, M. Pickering

DATE: May 27, 1999



N  
↑  
NO SCALE

1. WEDS 28 MARCH '90 OLA RLS 0537, F. PANICI  $\phi$ ; FOUND P.K NAIL @ R/W SPLIT; SET REFS, WILL DIG. F.P.K.N. REFS. 1 = 16.31'; 2 = 25.32'; 3 = 26.37'; 4 = ~~22.48'~~ 22.48'
2. SAT 7 APRIL '90 FOUND LARGE STONE 2'x2'x1.5' WITH POINT UP - NO MARKS @ 1.5' DEEP. 1 = 16.79'; 2. = 25.69'; 3. = 26.26'; 4 = 21.91'
3. WED 25 APRIL '90 SET RR. SPIKE W/CENTER PUNCH @ FOUND P.K NAIL REFS BECAUSE STONE HAD NO SPECIFIC MARKING AND NAIL WOULD HIT STONE.



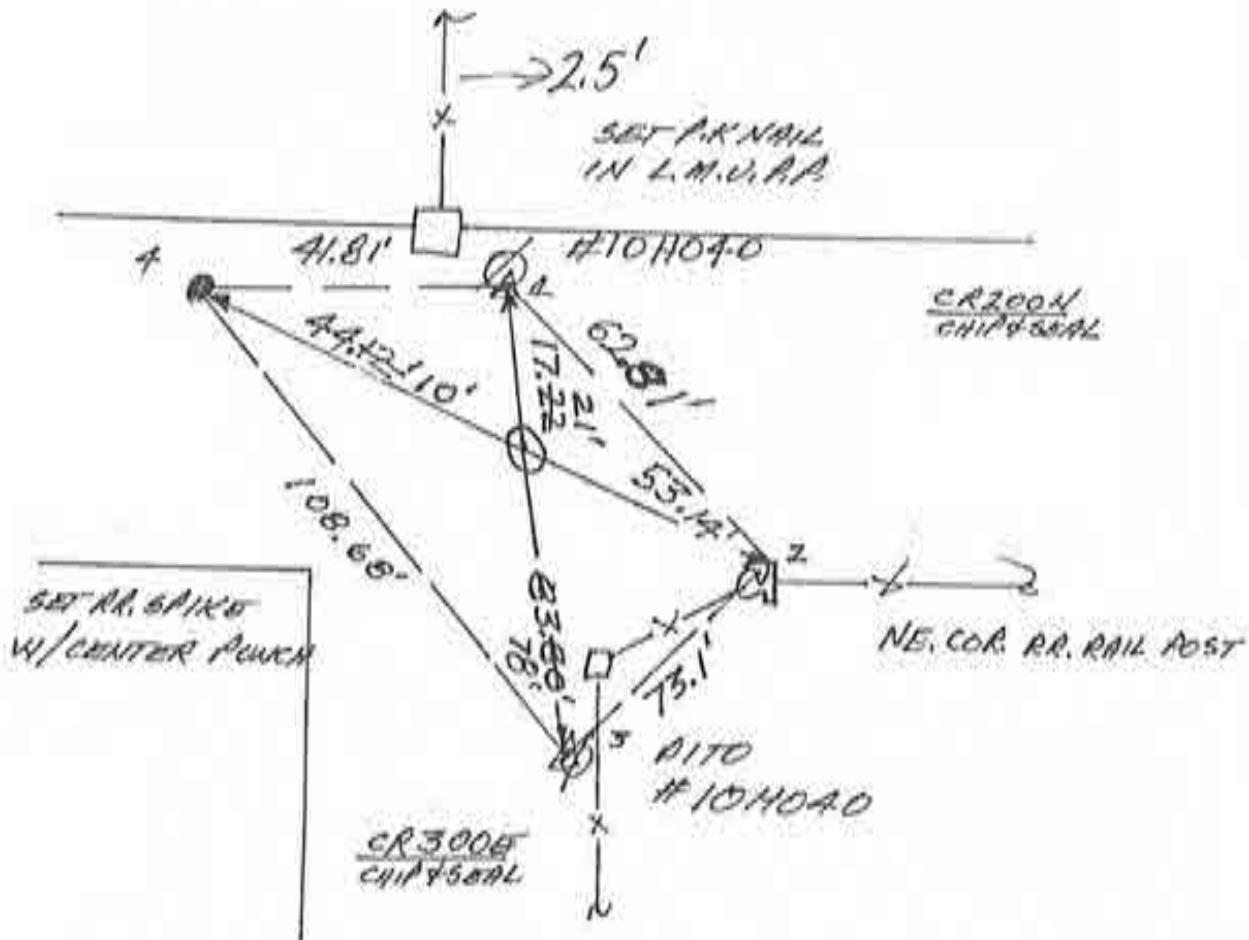
NW. COR. SEC. 4  
 Corner I-1 2009 Project  
 - See RF-0008-CA -



N  
↑  
NO SCALE

1. TUES 27 MARCH '90 DLA RLS 0537, F. PANICI  $\phi$ .  
FOUND RR. SPIKE @ C/R/W SPLITS, SET REFS, WILL  
DIG; F. RR.S. REFS  $\Rightarrow$  1. = 16.92' ; 2. = ~~84.58'~~ ;  
3. = 84.58' ; 4. = 41.09' ; 56.09'

2. SUN. 8 APRIL '90 FOUND  $\approx 1.5'$   $\phi$  OBLATE  
SPHEROID WITH NO MARKINGS SETTING ON AN  
 $\approx 2'$   $\phi$  BASE OF CRUMBLING RED QUARTZ. REF'D.  
TOP  $\&$  MASS OF TOP STONE.



3. MON 23 APRIL '90 SET RR. SPIKE W/CENTER PUNCH  
@ STONE REFS. STONE  $\approx 2.5'$  EAST OF FENCE.

### Corner I-9 2009 Project

SE, COR. SEC. 8

- See RF. 0007-CA -

# Section Corner Verification

0007

SECTION 8, TOWNSHIP 27N, RANGE 2E

(Description of Corner Location) SE Corner

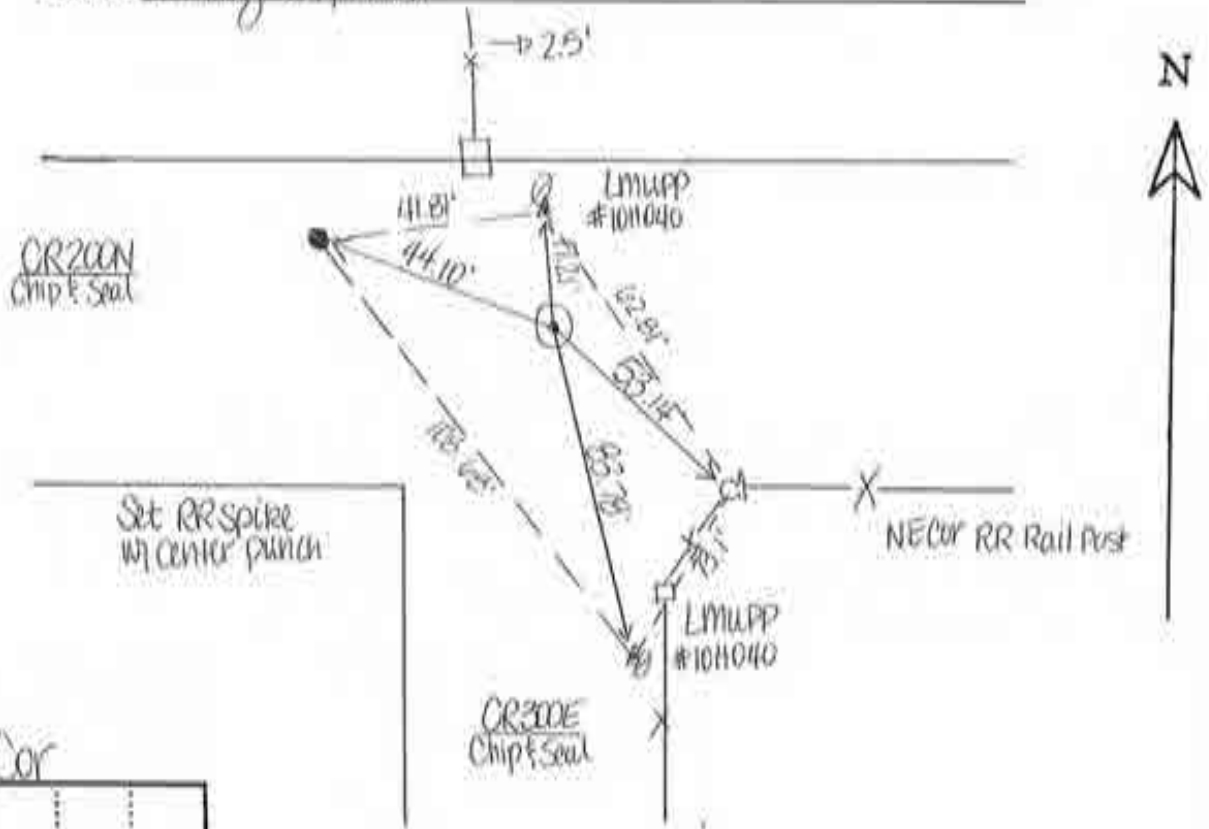
TOWNSHIP Clay, CASS COUNTY, INDIANA

TYPE OF MONUMENT: Railroad spike (small note)

DEPTH: \_\_\_\_\_

BY: L. Billman, J. Cripe, M. Pickering

DATE: May 27, 1999





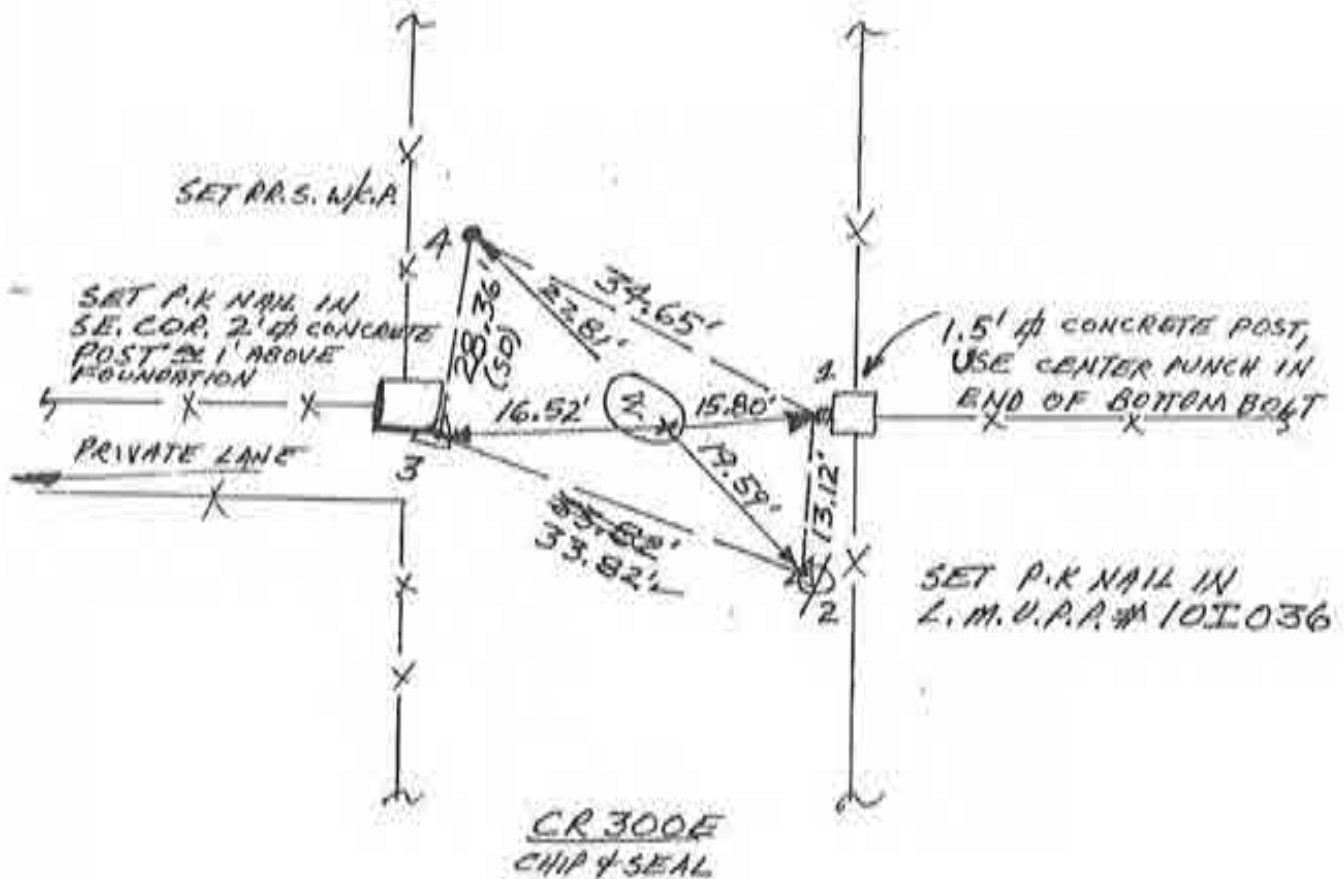


N  
↑  
NO SCALE

1. TUES. 3 APRIL '90 D.L.A. RLS 0537, F. PANICI  $\phi$ ;  
FOUND RR. SPIKE @ R/W SPLIT + FIELD DIVISION;  
CENTER PUNCHED SPIKE, SET REFS.; WILL DIG.  
FOUND SPIKE'S REFS  $\rightarrow$  1. = 15.94' ; 2 = 19.88' ;  
3. = 16.41' ; 4 = 27.53' .  
(SD)

2. SAT 7 APRIL '90 FOUND MASSIVE STONE ( $\approx$  3' LONG X  
1.5'-2' THICK CONICAL SHAPED) WITH 1' OVAL SECTION  
1.5' BELOW PAVEMENT WITH "W" & "X" ON TOP  
SECTION; REF'D. "X".

3. WEDS 25 APRIL '90 SET RR. SPIKE W/CENTER  
PUNCH @ STONE REFS.



NE. COR. SEC. 20

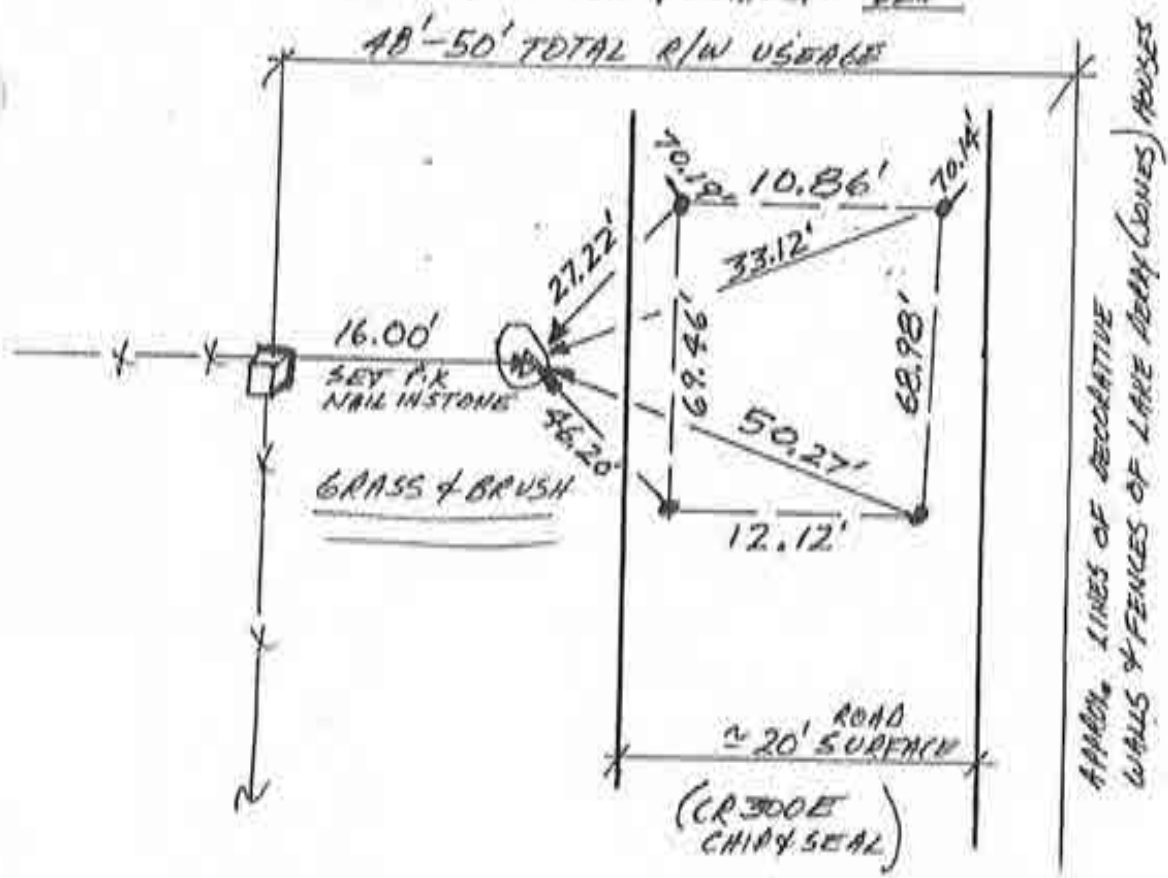




N  
↑  
1" SCALE

1. TUES 3 APRIL '90 DLARLS 0537 F. PANICQ; FOUND NO METAL SOUNDING, SET REFS.
2. MON 30 APRIL '90 HAVE VISITED THIS SITE SEVERAL TIMES - HAVE STUDIED LAKE PERRY ESTATES (APRIL 1970 ADDITION I @ P.B. #6, P. 10. THE PLANS CITE THE R/W FOR CR 300E @  $\approx 36'$ ; AND INDICATE THAT THE R/W FOR THE ADDITION WAS TO BE MOVED AS IF THE ENTIRE THOROUGHFARE WOULD LIE ON THE EAST SIDE OF THE SECTION LINE & THEREFORE PUTTING ALL IMPROVEMENTS WITHIN THE ADDITION'S SECTION. THE PLANS DO NOT CITE NOR LOCATE THE SECTION CORNER NOR LINE. A LARGE STONE 2.5' x 2' x  $\approx 1'$  THICK LYING EXPOSED ON TOP OF THE GROUND WEST OF THE PAVEMENT & 16' EAST OF THE OLD CR 300E R/W FENCE.

THIS STONE IS OF THE SAME SIZE & CONDITION OF MANY STONES FOUND ELSEWHERE IN THE COUNTY @ THE 32' R/W SPILT. SET P.R. NAIL IN STONE @ 16.0' FROM FENCE POST & IN LINE WITH FIELD DIVISION.  
 \*WARNING! USE WITH CAUTION. THIS STONE MAKES SENSE IN SOME SCENARIOS. BUT DOES NOT PRECISELY FIT THE LAKE PERRY PLANS. \*ALL

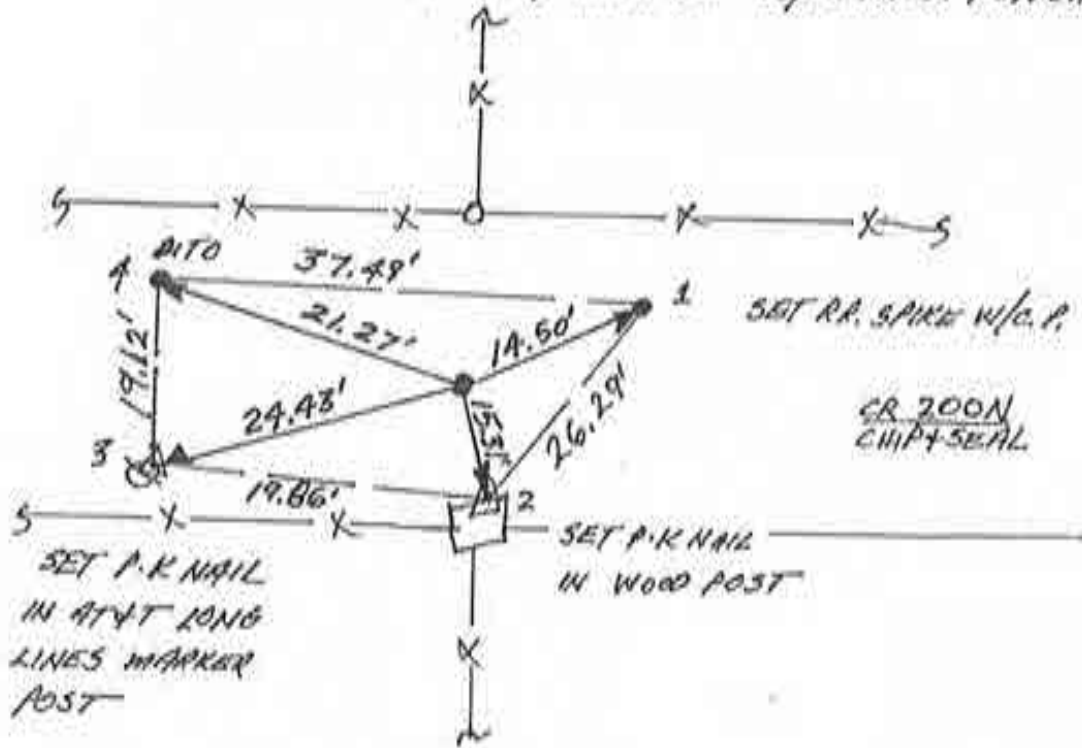


EAST 1/4 COR. SEC. 2.0  
 Corner I-15 2009 Project

N  
↑  
NO SCALE

1. WEDS 28 MARCH '90 OIA 1150537, F. PAULICI &  
FOUND P.K. NAIL @ R/W SPLIT, SET REFS,  
WILL DIG. F.P.K.N. REFS → 1 = 14.50' ; 2 = 15.31' ;  
3 = 24.43' ; 4 = 21.27' .

2. SUN. 8 APRIL '90 DUG 10' X 4' X 3.5' HOLE; NO POST  
NO PIT, NO MONUMENT/STONE; WILL REPLACE  
FOUND P.K. NAIL W/ RR. SPIKE W/CENTER PUNCH



3. MON 23 APRIL '90 SET RR. S. W/C.P. & F.P.K. NAIL

Corner K-9 2009 Project

SOUTH 1/4 COR. SEC. 9

- See RF-0011-CA

- ~~115~~

# Section Corner Verification

0011

SECTION 9, TOWNSHIP 27N, RANGE 2E

(Description of Corner Location) South 1/4 Corner

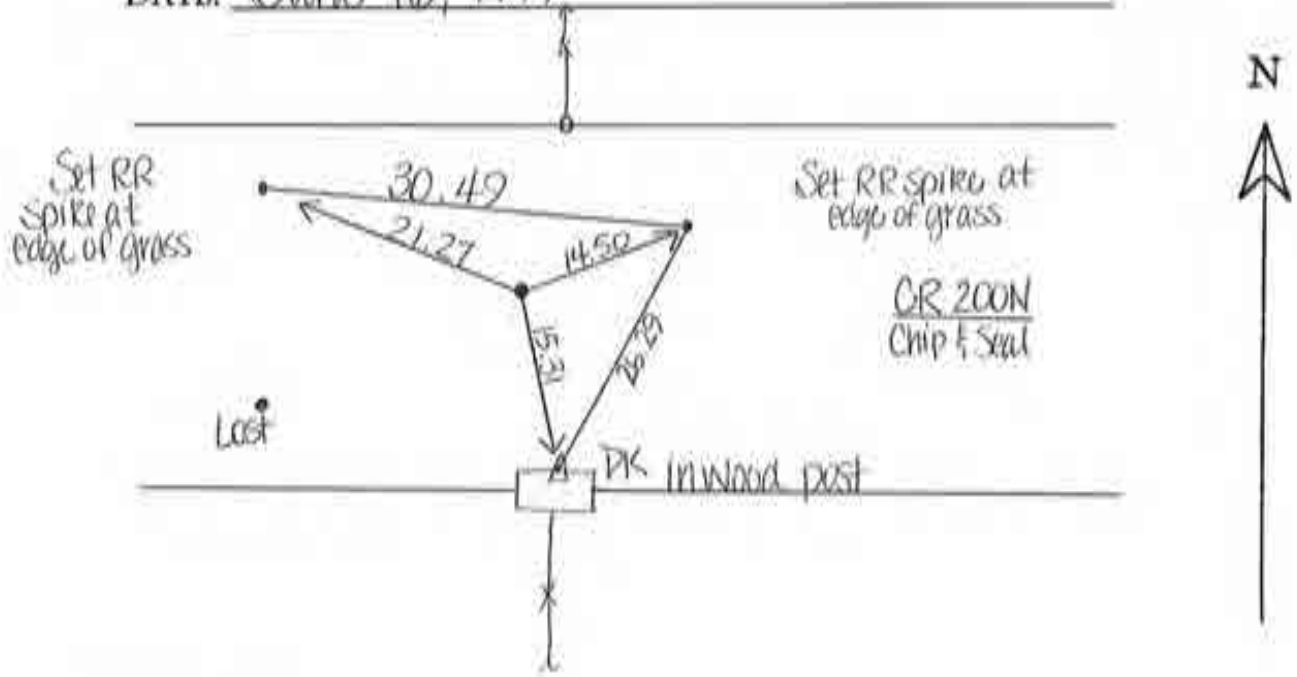
TOWNSHIP Clay, CASS COUNTY, INDIANA

TYPE OF MONUMENT: Railroad Spike

DEPTH: \_\_\_\_\_

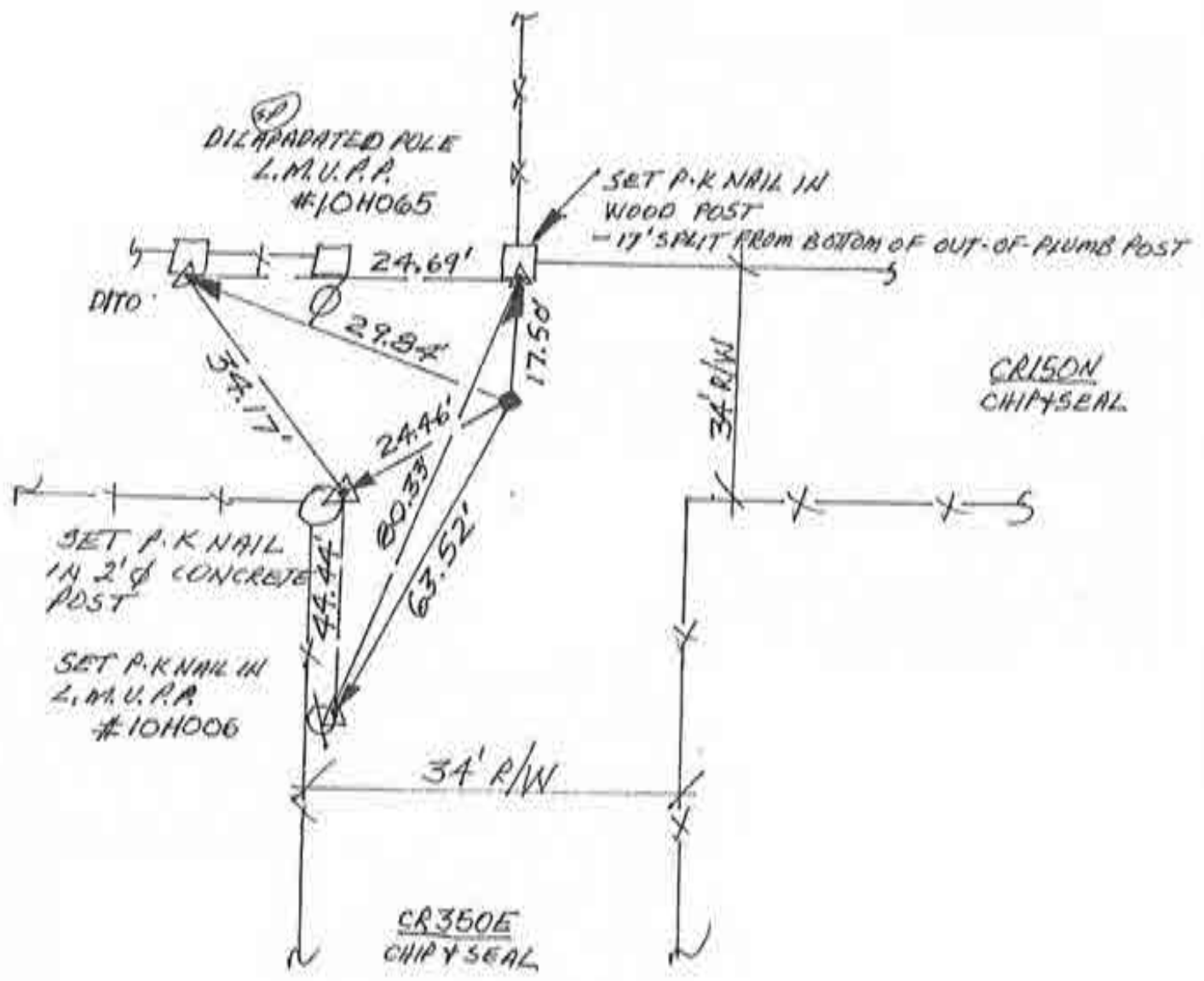
BY: L. Billman, J. Cripe, M. Pickering

DATE: June 16, 1999



N  
↑  
NO SCALE

1. THURS. 5 APRIL '90 DIA RIS 0537, F. PANICI Ø;  
FOUND NO METAL SOUNDING; SET REPS; SET  
RR. SPIKE W/CENTER PUNCH & R/W SPLIT.



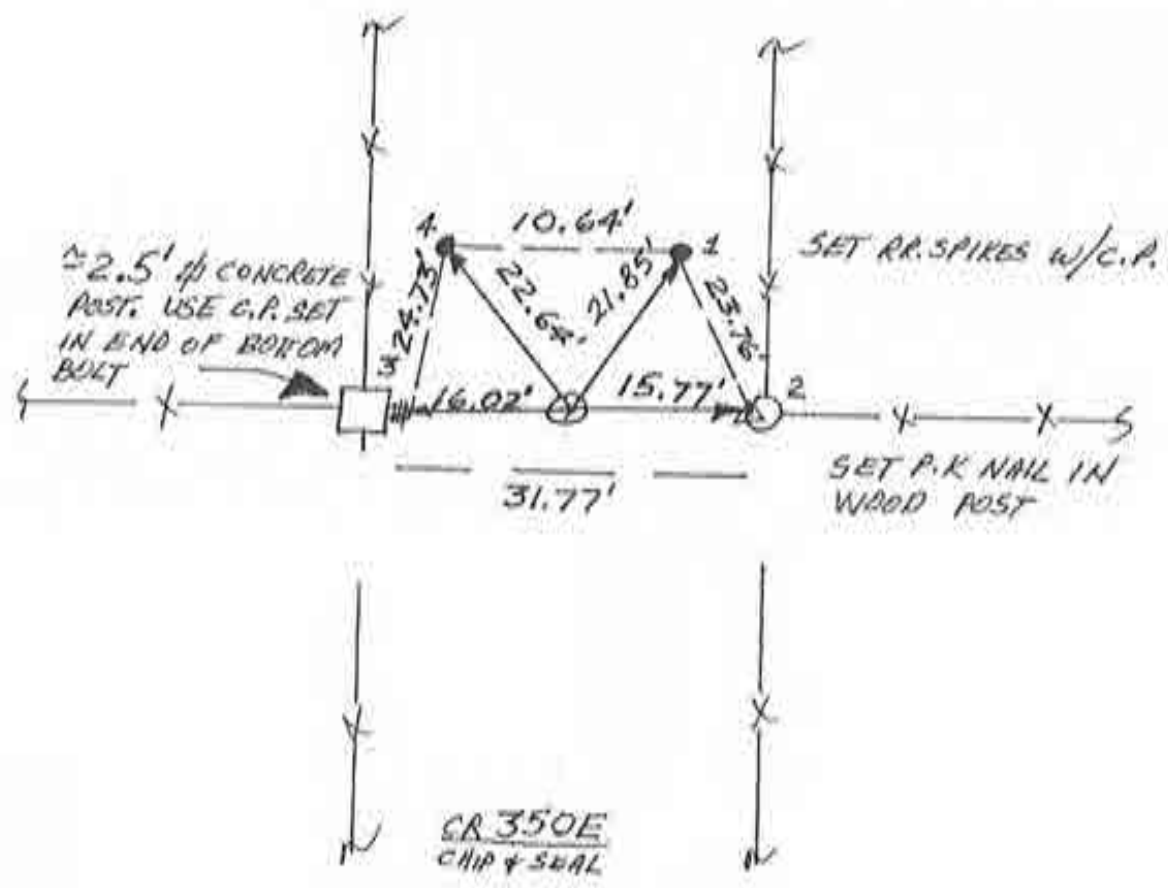
CENTER SECTION 16





N  
↑  
NO SCALE

1. THURS. 5 APRIL '90 DLA ALS 0537, F. PANICIA; FOUND RR. SPIKE EXPOSED @ R/W SPLIT @ FIELD DIVISION; CENTER PUNCHED SPIKE, SET REFS; WILL DIG. 1 = 22.57'; 2 = 16.52'; 3 = 15.28'; 4 = 23.01' ⇒ FOUND SPIKE REFS.
2. SAT. 7 APRIL '90 FOUND FOOTBALL SHAPED & SIZED STON. WITNESSING OVER 2' LONG CONICAL STONE WITH FLAT TOP & NO MARKINGS. REF'D. @ TOP MASS OF BOTTOM STONE. WITNESS STONE NOT REACHED IN LIEU OF METAL STAKE & REF'S.
3. WEDS. 25 APRIL '90 SET RR. SPIKE @ STON'S REF. (W. CENTER PUNCH)



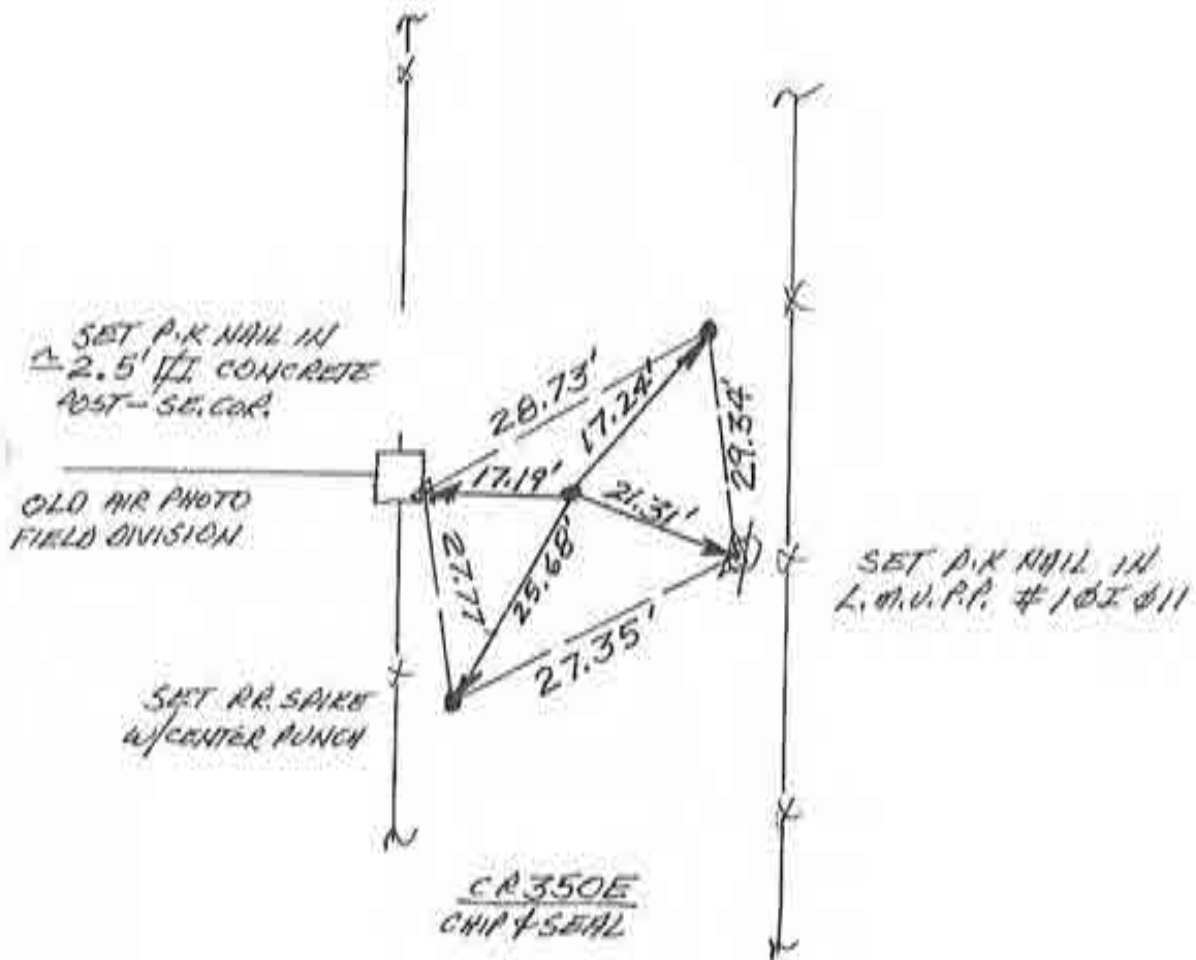
SOUTH 1/4 COR. SEC. 16





N  
↑  
NO SCALE

1. THURS. 5 APRIL '90 DIA RLS 0537 F. PANICI  $\phi$ ; FOUND STRONG (RR. SPIKE LIKE) METAL SOUNDING @ OLD FIELD DIVISION + 1963 AIR PHOTO; DUG  $\approx \phi 4'$  HOLE BUT SPIKE IS STILL NOT IN SIGHT, WILL DIG W/ BACKHOE.
2. 26 APRIL '90 THURS. MISSED THIS LOCATION WITH BACKHOE; DUG ANOTHER  $\approx \phi 3'$  BY HAND - STILL NO SIGHTING; BUT SOUNDING REMAINS. SET RR. SPIKE W/CENTER PUNCH OVER SOUNDING



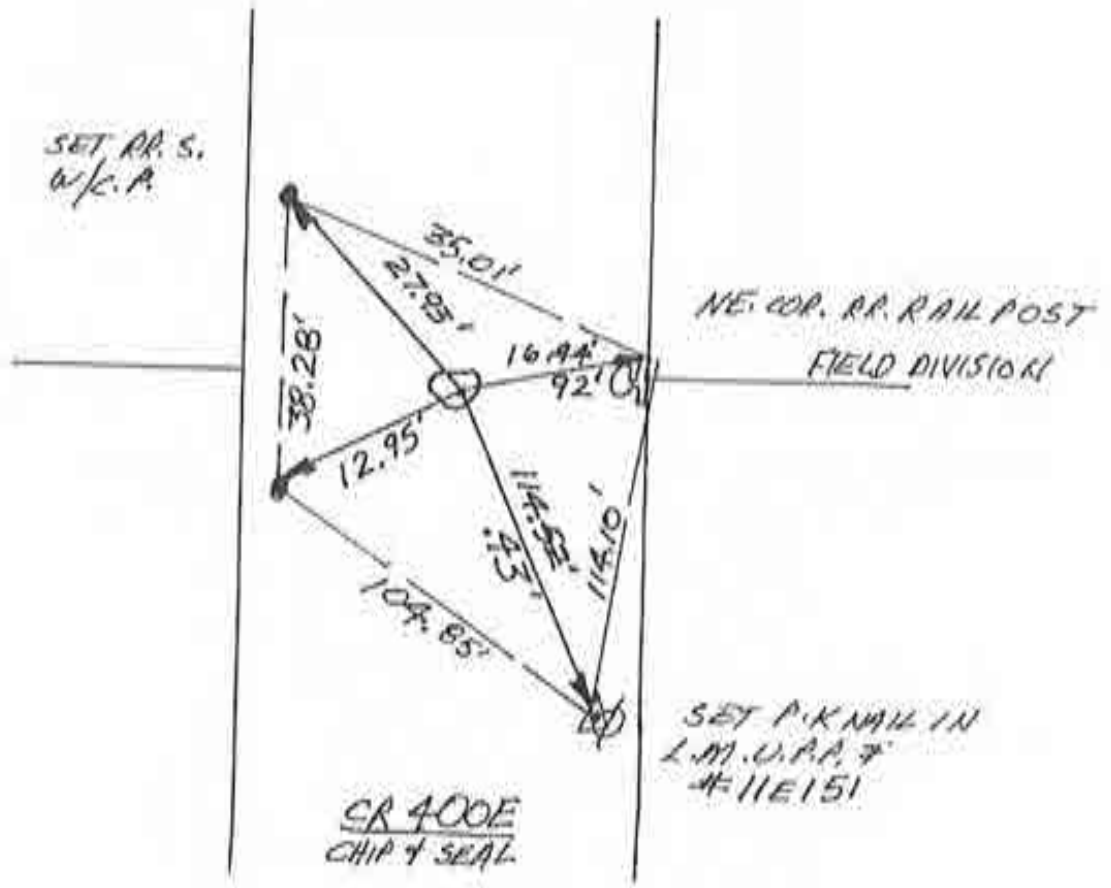
CENTER SEC. 21



N

SCALE

1. WEDS. 28 MARCH '90 OLA RLS 0537, F. PANICI @;  
NO METAL SOUNDING; SET REFS, WILL DIG.
2. SAT. 7 APRIL '90 FOUND  $\approx 1.5"$  BALL SHAPED STONE  
 $\approx 2'$  DEEP W/NO MARKINGS. USED POINT-LIKE  
PROJECTION ON TOP
3. WED 25 APRIL '90 SET RR. SPIKE W/CENTER  
PUNCH @ STONE'S REFS.



NE. COR. SEC. 4  
 Corner M-1 2009 Project  
 - See RF. 0009-CA -



# Section Corner Verification

0009

SECTION 4, TOWNSHIP 27N, RANGE 2E

(Description of Corner Location) NE Corner

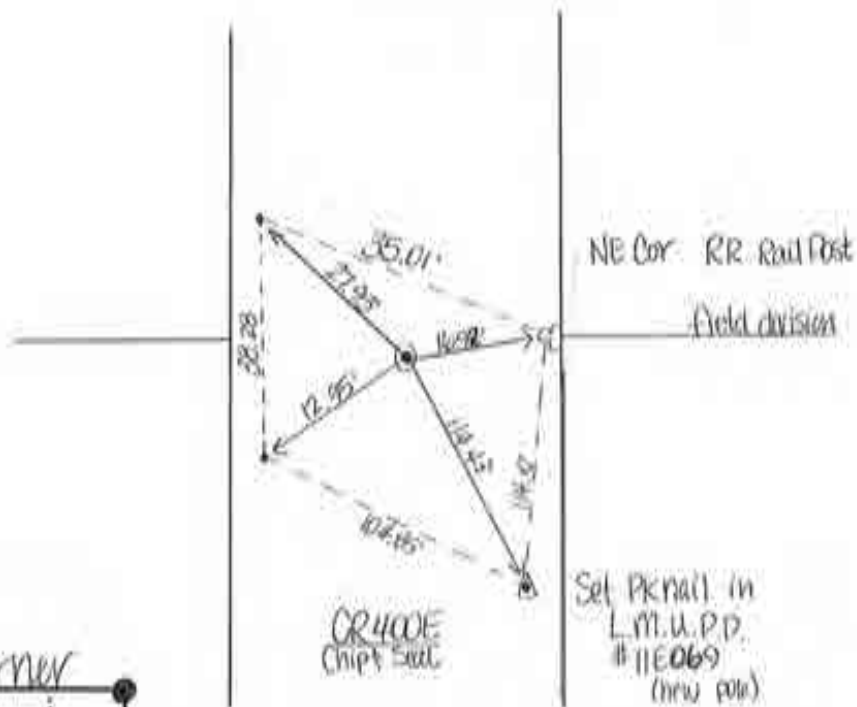
TOWNSHIP Clay, CASS COUNTY, INDIANA

TYPE OF MONUMENT: RR Spike

DEPTH: \_\_\_\_\_

BY: L. Billman, J. Cripe, M. Pickering

DATE: June 10, 1979

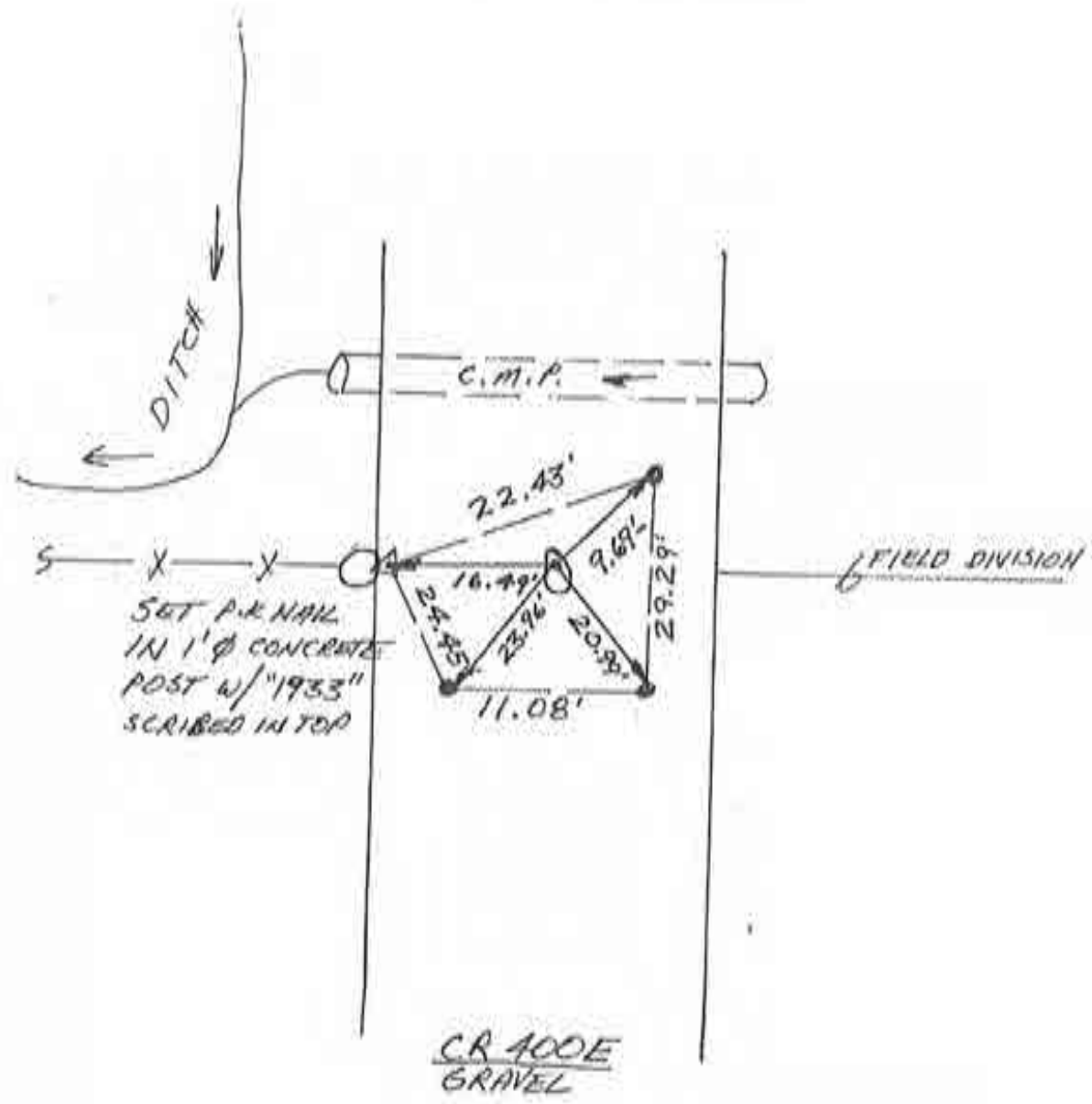


\*found all references\*

M-1

N  
↑  
0 SCALE

1. WEDS. 28 MARCH '90 OLA ALS 0537, F. PANICI  $\phi$ ; NO METAL SOUNDING; SET REFS; WILL DIG;
2. SAT 7 APRIL '90 FOUND 2' LONG X 2" WIDE POINTED STONE W/ NO MARKINGS. USE POINT.  $\approx$  3' DEEP
3. WED 25 APRIL '90 SET RR. SPIKE W/ CENTER PUNCH @ STONE'S REFS.



EAST 1/4 COR. SEC. 4  
Corner M-3 2009 Project

- See RF-0010-CA -

# Section Corner Verification

0010

SECTION 4, TOWNSHIP 27N, RANGE 2E

(Description of Corner Location) E 1/4 Corner

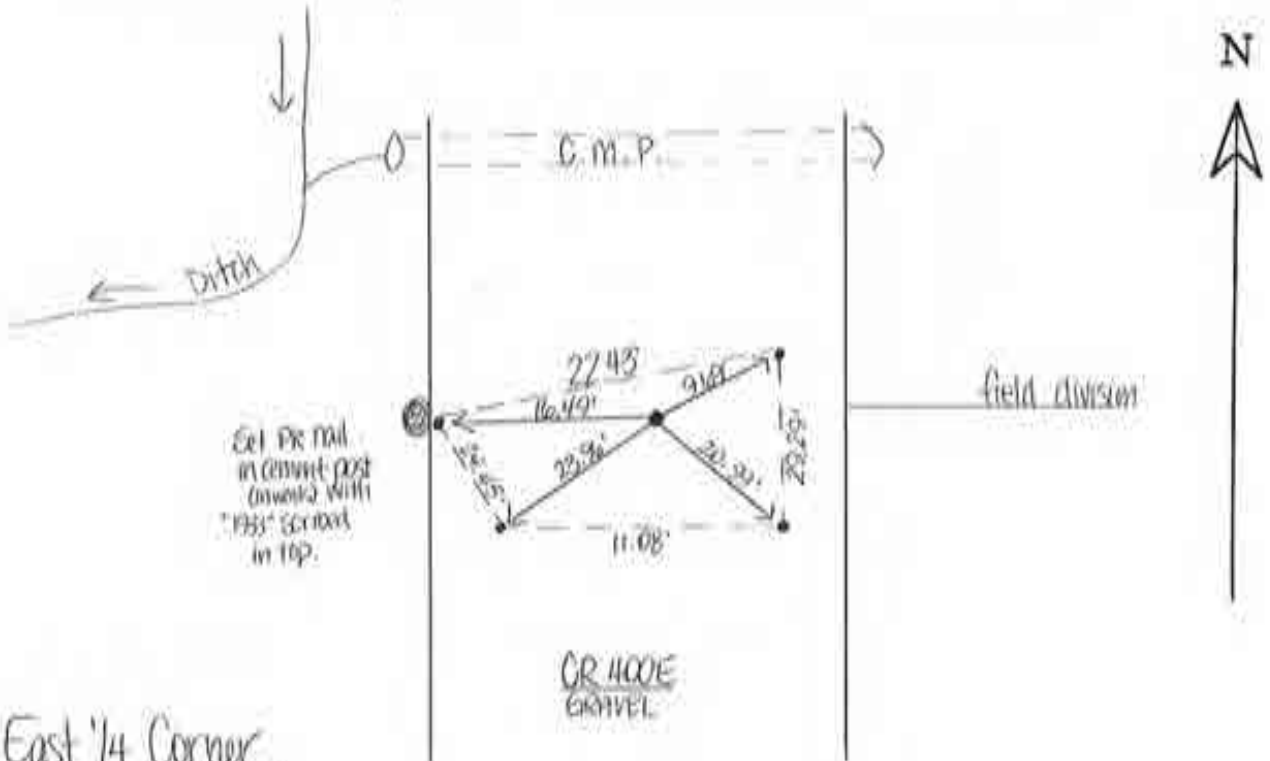
TOWNSHIP Clay, CASS COUNTY, INDIANA

TYPE OF MONUMENT: Rail Road Spike

DEPTH: 6"

BY: L. Billman, J. Cripe, M. Dickering

DATE: June 10, 1999



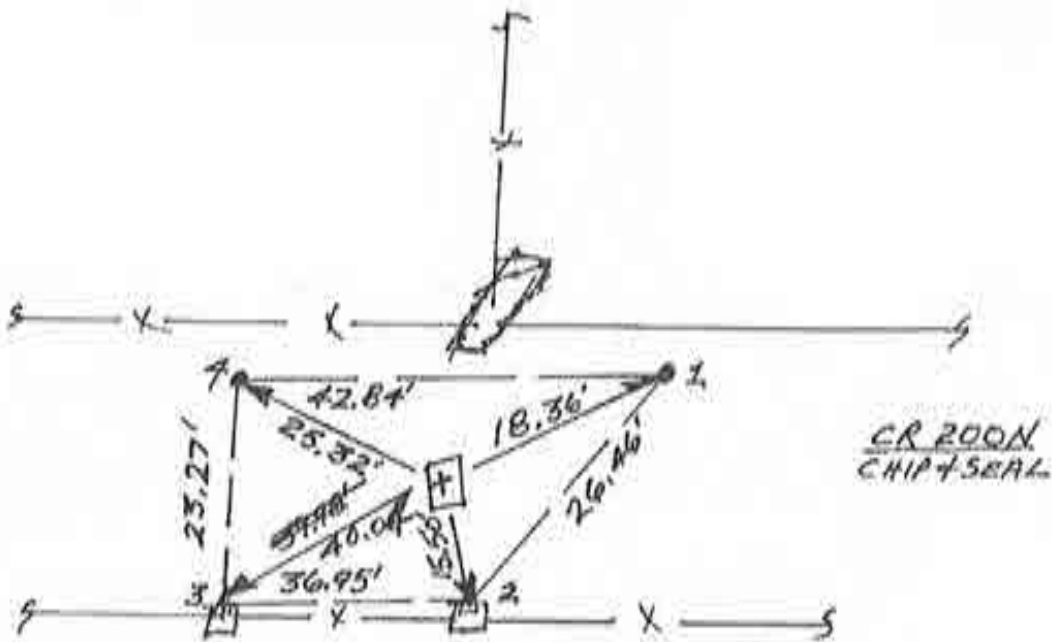




N  
↑  
NO SCALE

1. WEDS. 28 MARCH '90 DLA RLS 0587, F. MANICI @;  
FOUND P.K NAIL @ R/W SPLIT + FIELD DIVISION.  
F.P.K.N. REFS. 1 = 18.24' ; 2 = 16.72' ; 3 = 40.41' ;  
4 = 25.02'.

2. SUN. 8 APRIL FOUND  $\approx 1' \times 0.5' \times 1.5'$  LONG RECTANGULAR  
STONE WITH "+" CHISELED IN TOP STONE IS 1' DEEP.  
1.22' TO FOUND P.K NAIL.



3. MON 23 APRIL '90 SET RR. SPIKE W/ CENTER PUNCH  
@ STONE'S REFS.

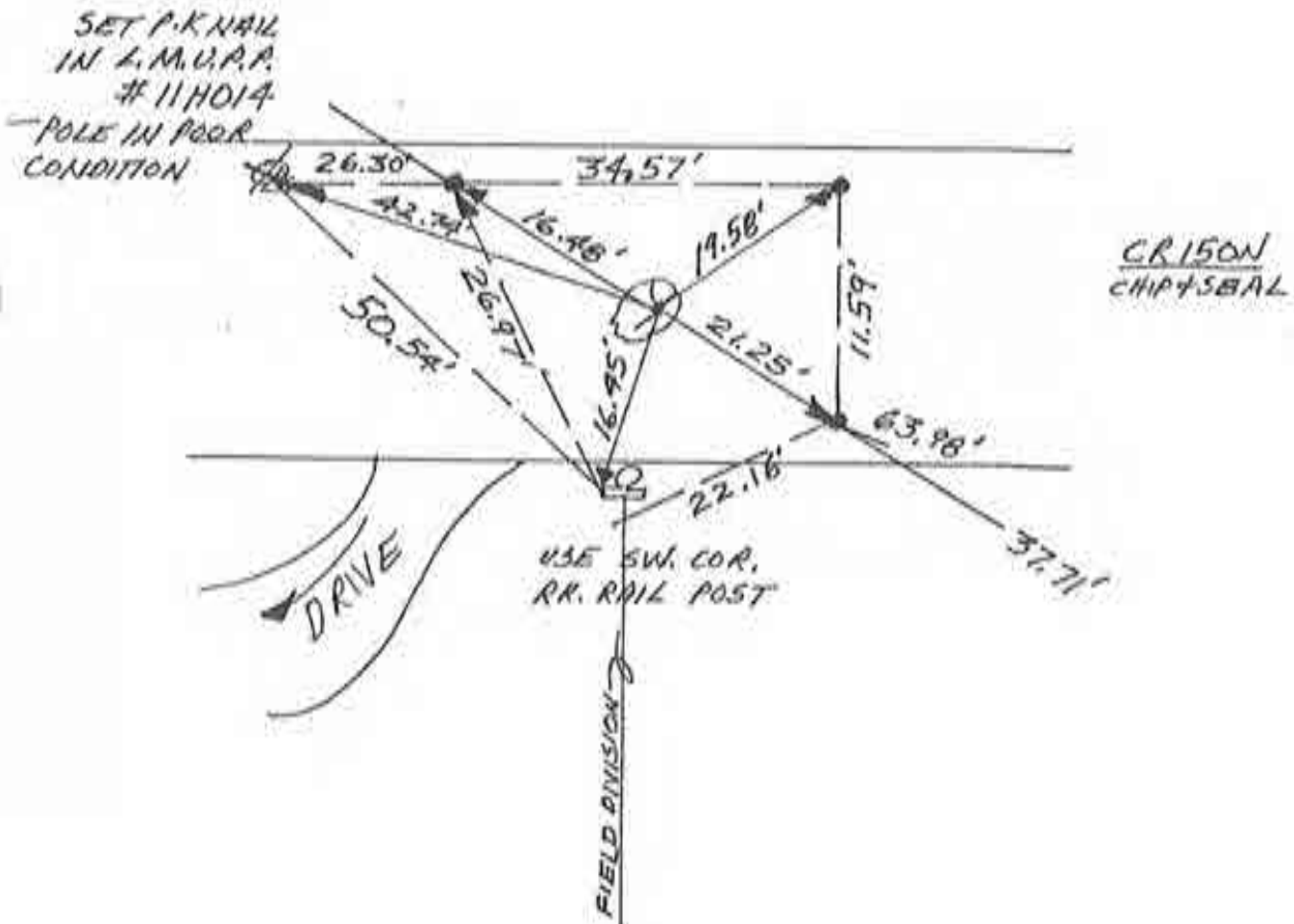
SE. COR. SEC. 9

Corner M-9 2009 Project



N  
NO SCALE

1. TUES. 3 APRIL '90 OLA RLS 0537, F. PANICLO;  
NO MONUMENT SOUNDING, SET REFS; WILL DIG.
2. SAT 7 APRIL '90 FOUND  $\approx 2'$   $\phi$  BALL SHAPED STONE  
WITH " $\frac{1}{4}$ " ON EAST FACE (CHISELED IN); REP'D.  
TOP POINT; STONE  $\approx 1'$  DEEP.
3. WEDS 25 APRIL '90 SET RR SPIKE N/CENTER  
PUNCH @ STONE'S REFS.



EAST  $\frac{1}{4}$  COR. SEC. 16



N  
NO SCALE

1. WEDS. 28 MARCH '90 DIA RLS 0537 F. PANIC!  
THIS POSITION APPEARS TO FALL IN THE SPRING  
CREEK CHURCH CEMETERY. NEWPORTS PERTINENT  
SURVEYS AVOID CITE. POSITION REQUIRES  
EXTENSIVE HORIZONTAL TRAVERSE AROUND  
SECTION 3 AT LEAST. & ∴ BEYOND THIS  
PROJECT'S SCOPE. ✓

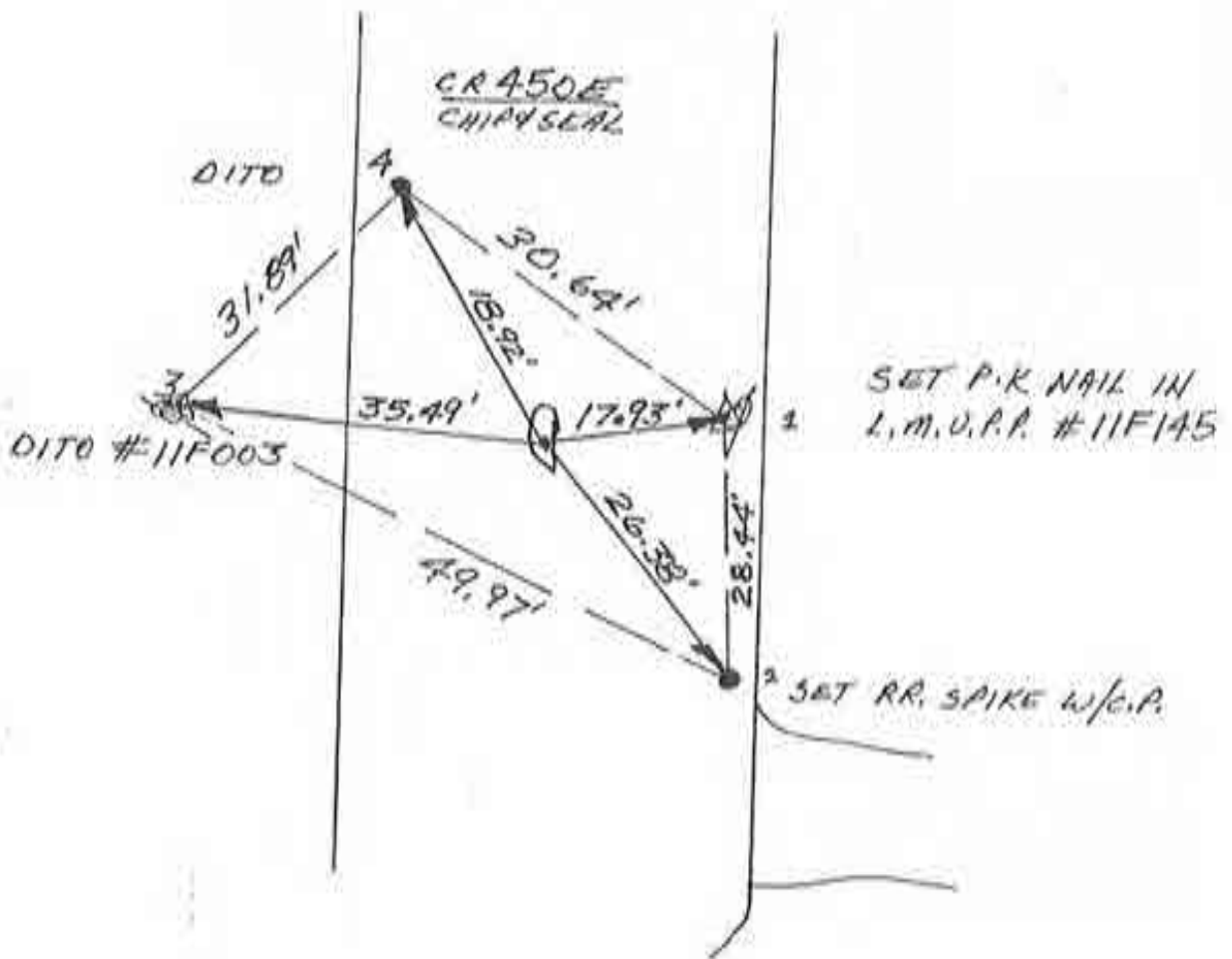
CENTER of SEC. 3





N  
NO SCALE

1. WEDS. 28 MARCH '90 DIA RLS 0537, F. PANICI  $\phi$ .  
 FOUND RR. SPIKE @ R/W SPLIT + FIELD DIVISION.  
 PUNCHED SPIKE & SET REFS.; WILL DIG. F.S. REFS-  
 1 = 18.13' ; 2 = 26.54' ; 3 = 35.29' ; 4 = 18.74'.
2. SAT 7 APRIL '90 FOUND  $\approx$  2' X 1.5' ANGULAR STONE  
 W/NO MARKINGS & POINT W/C @  $\approx$  2.5' DEEP.  
 REF'D. POINT. POINT IS NON-DESCRIPT, WILL USE  
 FOUND SPIKE SINCE SPIKE WILL REPRESENT STONE  
 JUST AS WELL.
3. MON 23 APRIL '90 SET RR.S. W/C.P. @ FOUND SPIKE'S  
 REFS



NORTH 1/4 COR. SEC. 10

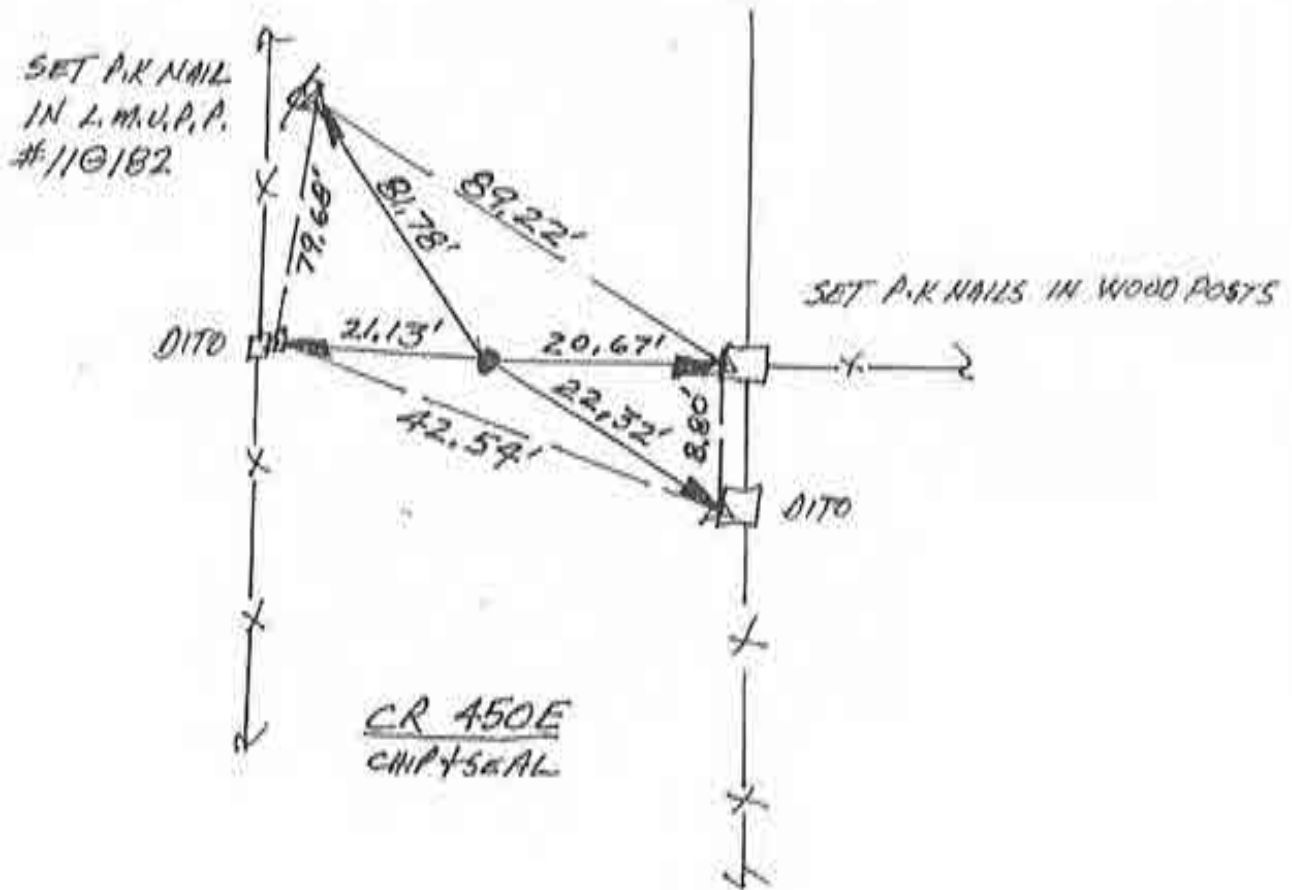
Corner O-5 2009 Project





N  
 ↑  
NO SCALE

1. WEBS. 28 MARCH '90 DLA RLS 0537, F. PANICI  $\phi$ ; FOUND SMALL METALLIC SOUNDING (LIKE P.K. NAIL) @ R/W SPILT + FIELD DIVISION. DUG 3 1/2' & FOUND THAT "NAIL" SOUND WAS DEEPER. SET RR. SPIKE W/CENTER PUNCH OVER SOUNDING. SET REFS.



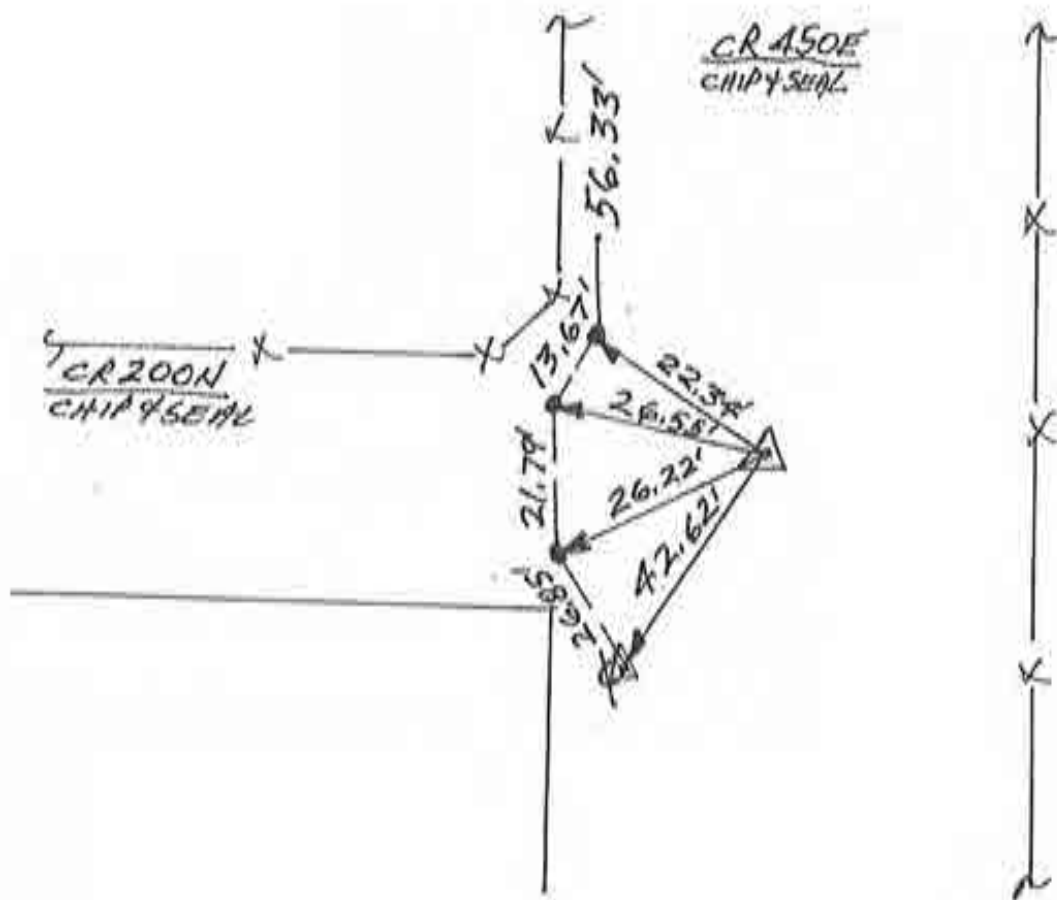
CENTER OF SEC. 10

Corner O-7 2009 Project



N  
↑  
NO SCALE

1. WEBS, 28 MARCH '90 DLA RLS 0537, F. PANICU; FOUND P.K NAIL @ R/W SPLITS; SET REFS.; DIG WILL NOT BE MADE DUE TO EXCESSIVE (OVER 6') CUT REQUIRED TO REACH DESIRED DEPTH. ROAD HAS BEEN BACK-FILLED. ∴ USE FOUND P.K NAIL.



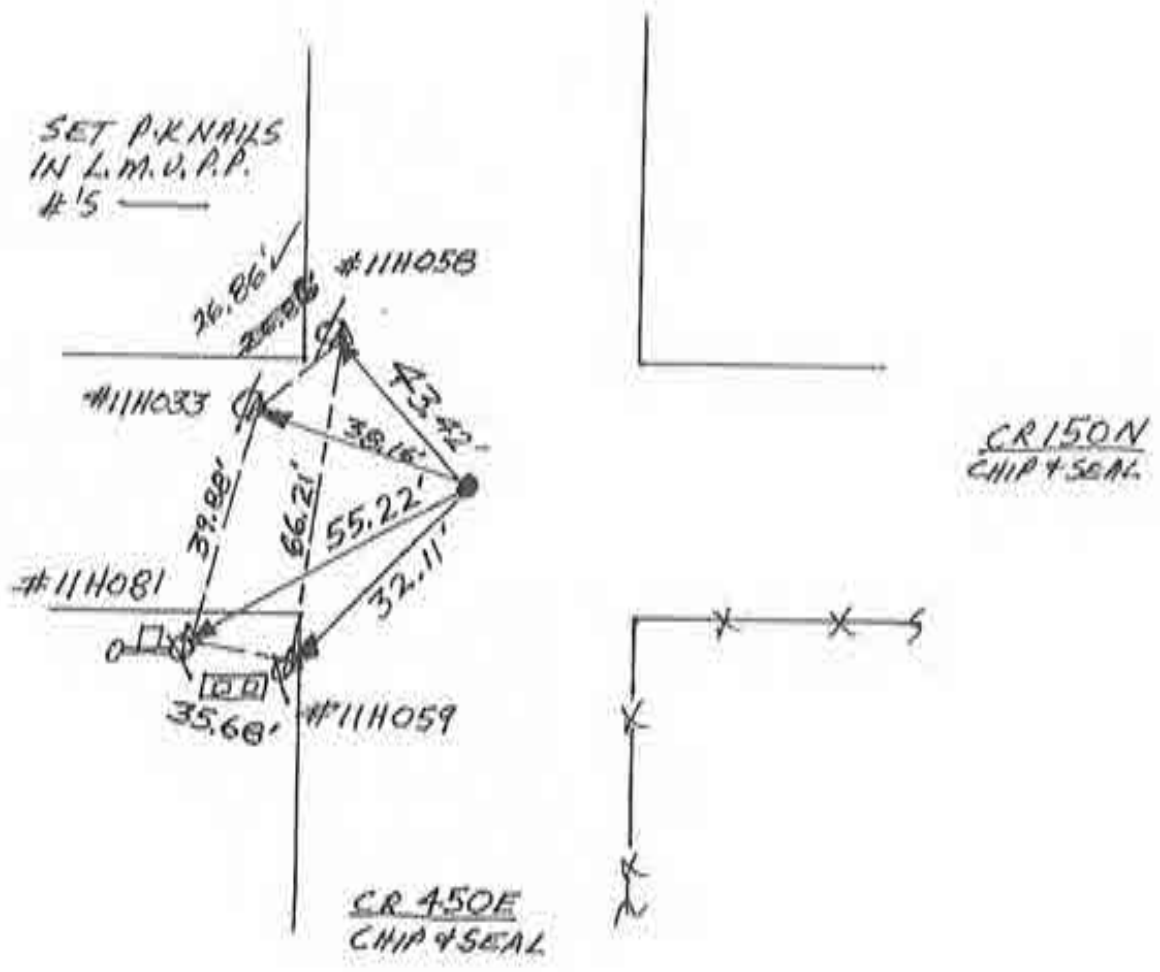
Corner O-9 2009 Project  
SOUTH 1/4 COR. SEC. 10

- See RF-0012-CA -



N  
↑  
SCALE

1. TUES 3 APRIL '90 DLA RLS 0537, F. PANICI  $\phi$ ;  
FOUND RR. SPIKE - SET CENTER PUNCH; SET REFS.  
USE FOUND SPIKE, NO TIFIN IN CENTER.



CENTER SEC. 15

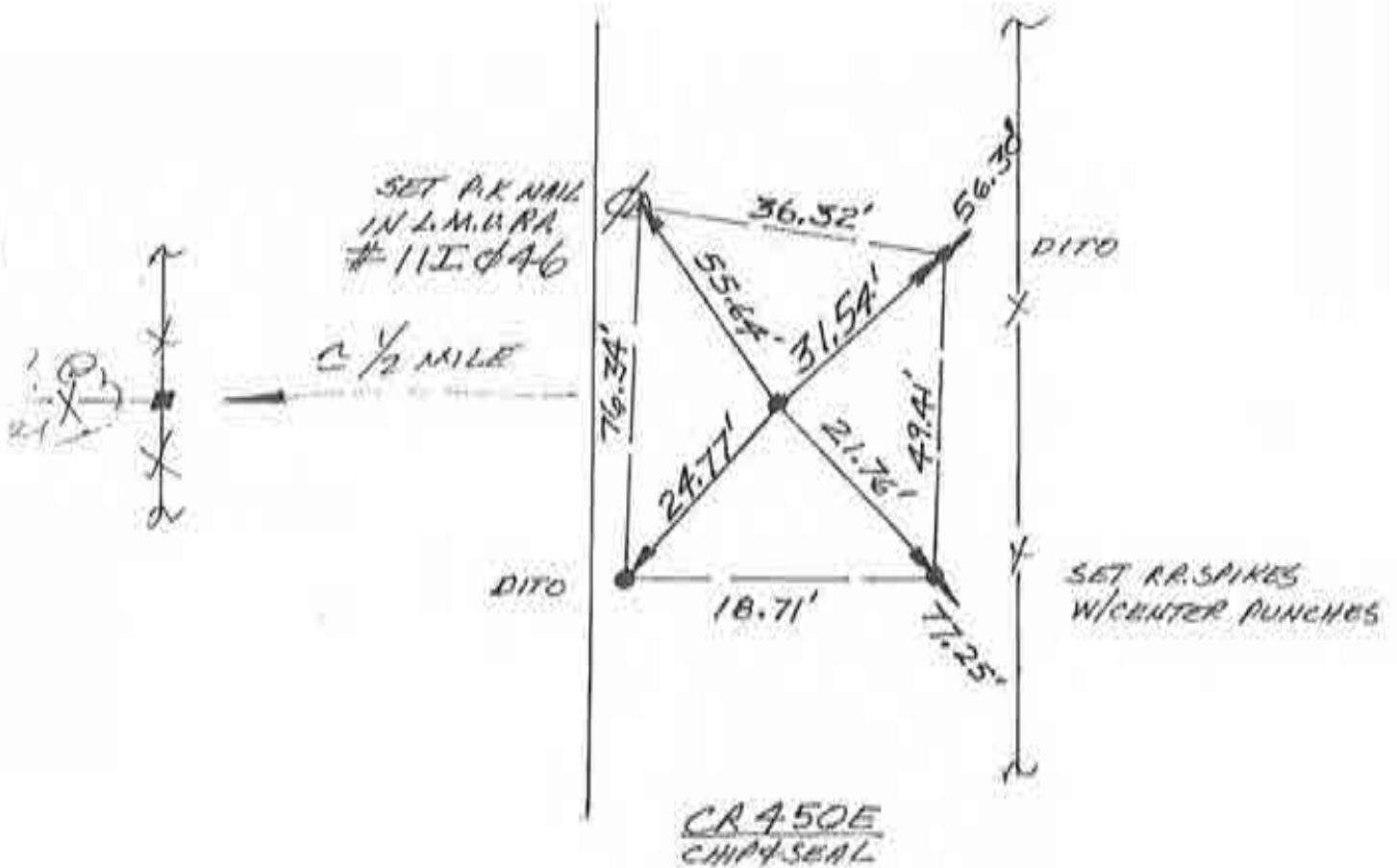


N  
↑  
NO SCALE

1. THURS. 5 APRIL '90 DLA RLS 0537, F. PANICI &  
FOUND RR. SPIKE @ R/W SPLIT + OLD FIELD DIVISION  
(P). SET REFS.; WILL DIG. FOUND SPIKE REFS →  
1. = 31.54' ; 2. = 21.76' ; 3 = 24.77' ; 4 = 55.64'.

2. SAT 7 APRIL '90 DUG 6'X3'X4' DEEP HOLE; NO POST  
NO PIT, NO STONE; WILL REPLACE FOUND SPIKE.

3. WEDS. 25 APRIL '90 SET RR. SPIKE W/CENTER PUNCH  
@ FOUND SPIKE'S REFS.



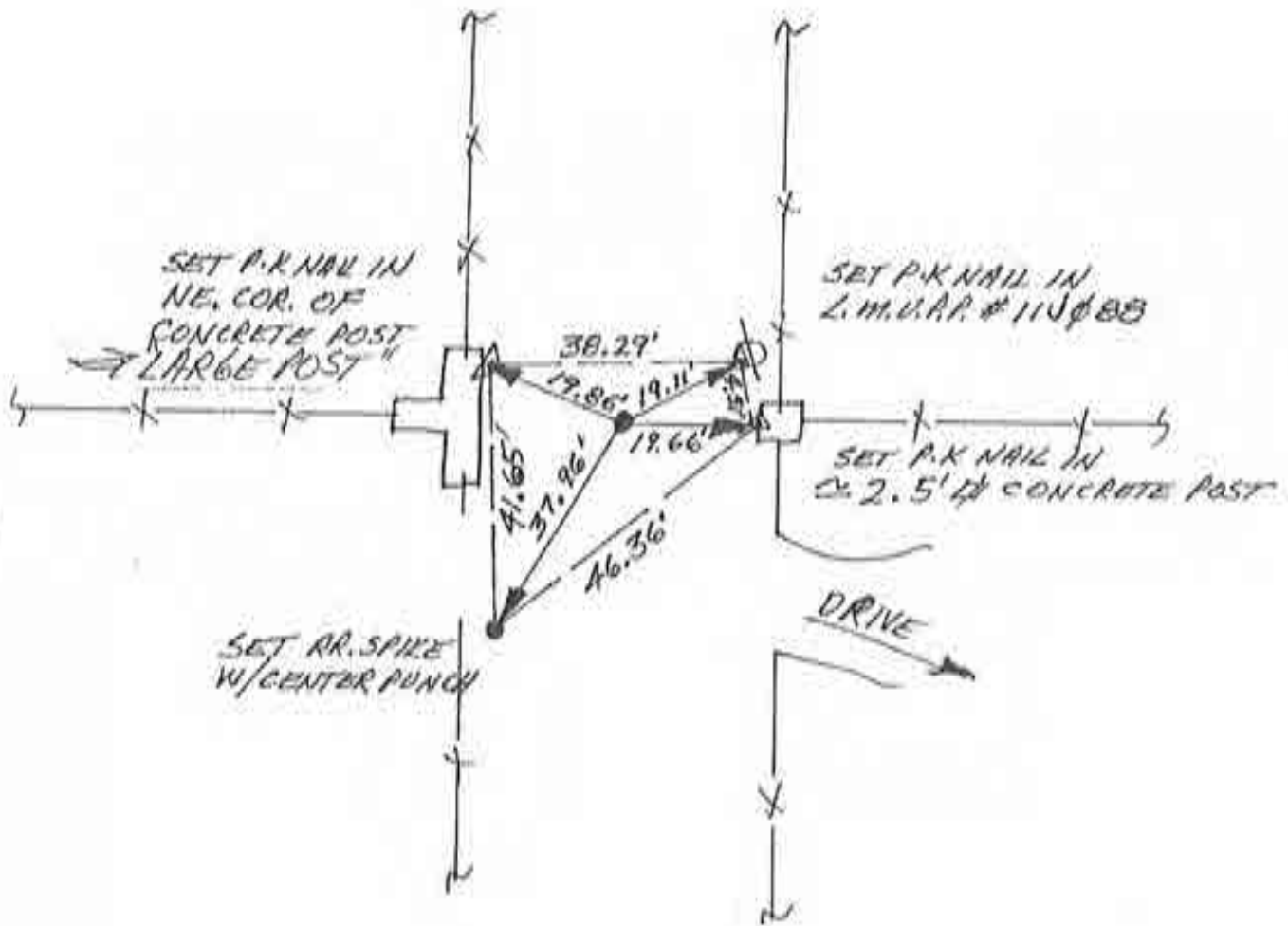
SOUTH 1/4 COR. SEC. 15





N  
NO SCALE

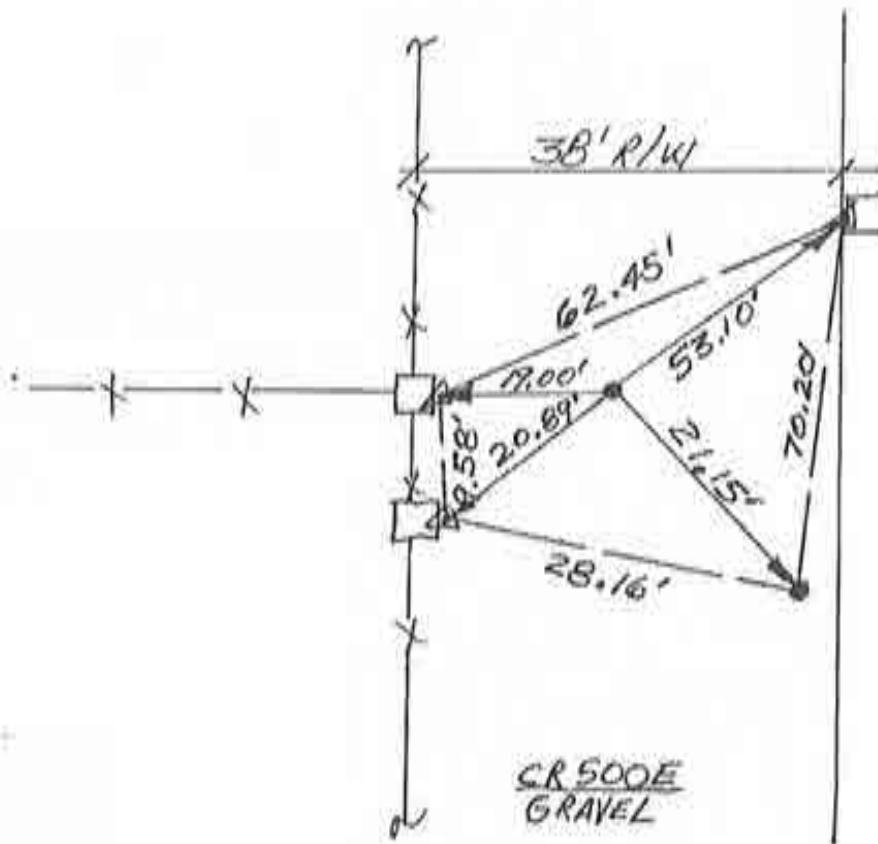
1. THURS. 5 APRIL '90 OLA RLS 0537, F. PANICI  $\phi$ ;  
FOUND RR. SPIKE @ R/W SPLIT + FIELD DIVISION.  
CENTER PUNCHED SPIKE & SET REFS. NO 016  
WILL BE MADE - TIFIN  $\checkmark$ ; TOOK SPIKE AS  
BEST EVIDENCE.



CENTER SEC. 22

N  
 NO SCALE

1. FRI. 5 APRIL '90 DIA RLS 0537, F. PANICI  $\phi$ ; NO METAL SOUNDING; SET REFS., WILL DIE.
2. SAT. 7 APRIL '90 DUG 12'X6'X3.5' DEEP HOLE, NO POST, NO PIT, NO STONE; WILL SPLIT R/W.
3. MON 23 APRIL '90 SET RR. SPIKE w/CENTER PUNCH @ 19' R/W SPLIT + FIELD DIVISION



NE. COR. SEC. 10

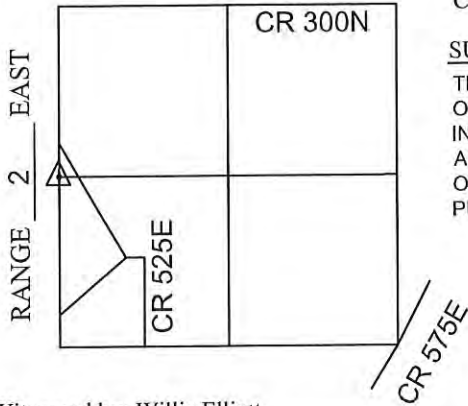


# CORNERSTONE RECORD BOOK

## SITE MAP

SECTION 11

TOWNSHIP 27 NORTH



Witnessed by: Willie Elliott  
Mike Grooms

OFFICE OF THE CASS COUNTY SURVEYOR, LOGANSPORT, INDIANA

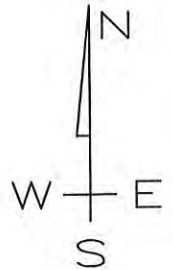
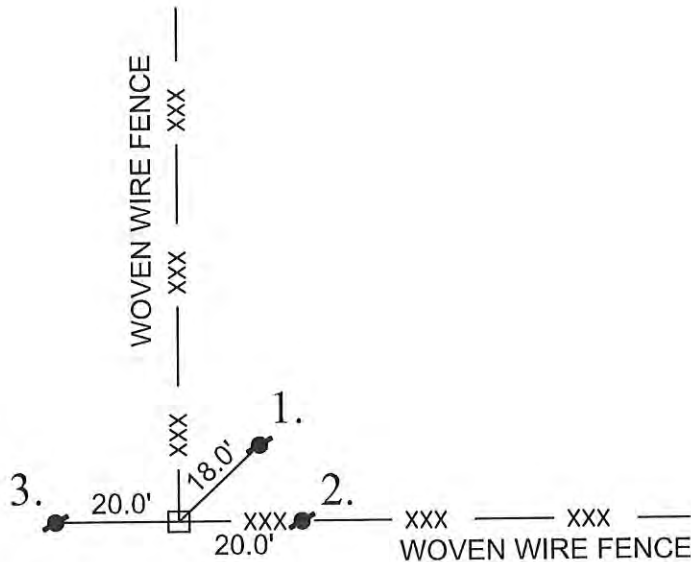
CORNER DESCRIPTION: WEST 1/4 CORNER OF SEC. 11 TWP-27N, RNG-2E

DATE RECOVERED: February 2, 2016

CORNER RECOVERED BY: RANDALL MILLER

SURVEYOR'S REPORT:

THE CASS COUNTY RECORDS PROVIDED NO PRIOR EXCAVATION HISTORY FOR THIS CORNER. ON FEBRUARY 2, 2016, A 8 INCH SQUARE CONCRETE CORNER POST WAS FOUND AT THE INTERSECTION OF FENCE LINES SITUATE NORTH, EAST, AND SOUTH FROM ITS LOCATION. THE AREA AROUND THE POST WAS THOROUGHLY SEARCHED AND PROBED, AND NO STONE OR ANY OTHER EVIDENCE WAS FOUND. 5/8 INCH DIAMETER STEEL REBARS WERE SET FOR THE PURPOSE OF REFERENCING THE CORNER, AS SHOWN.



MONUMENT SET: 8 INCH SQUARE CONCRETE CORNER POST FOUND AT THE INTERSECTION OF FENCE LINES

REFERENCES: 1. 5/8 INCH DIAMETER STEEL REBAR SET FLUSH WITH GROUND

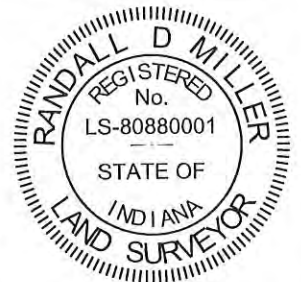
2. 5/8 INCH DIAMETER STEEL REBAR SET FLUSH WITH GROUND

3. 5/8 INCH DIAMETER STEEL REBAR SET FLUSH WITH GROUND

CERTIFICATION:

I, THE UNDERSIGNED, RANDALL MILLER, A LAND SURVEYOR REGISTERED IN THE STATE OF INDIANA UNDER I.C. 25-31, DO HEREBY CERTIFY THAT I HAVE RECOVERED THE CORNER HEREON SHOWN AND DESCRIBED.

*Randall Miller*  
RANDALL D. MILLER  
R.L.S. #880001

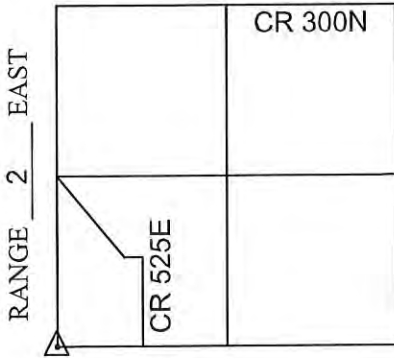


# CORNERSTONE RECORD BOOK

## SITE MAP

SECTION 11

TOWNSHIP 27 NORTH



OFFICE OF THE CASS COUNTY SURVEYOR, LOGANSPORT, INDIANA

CORNER DESCRIPTION: SW CORNER OF SEC. 11 TWP-27N, RNG-2E

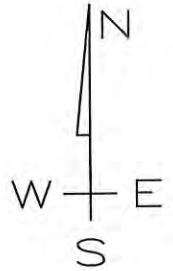
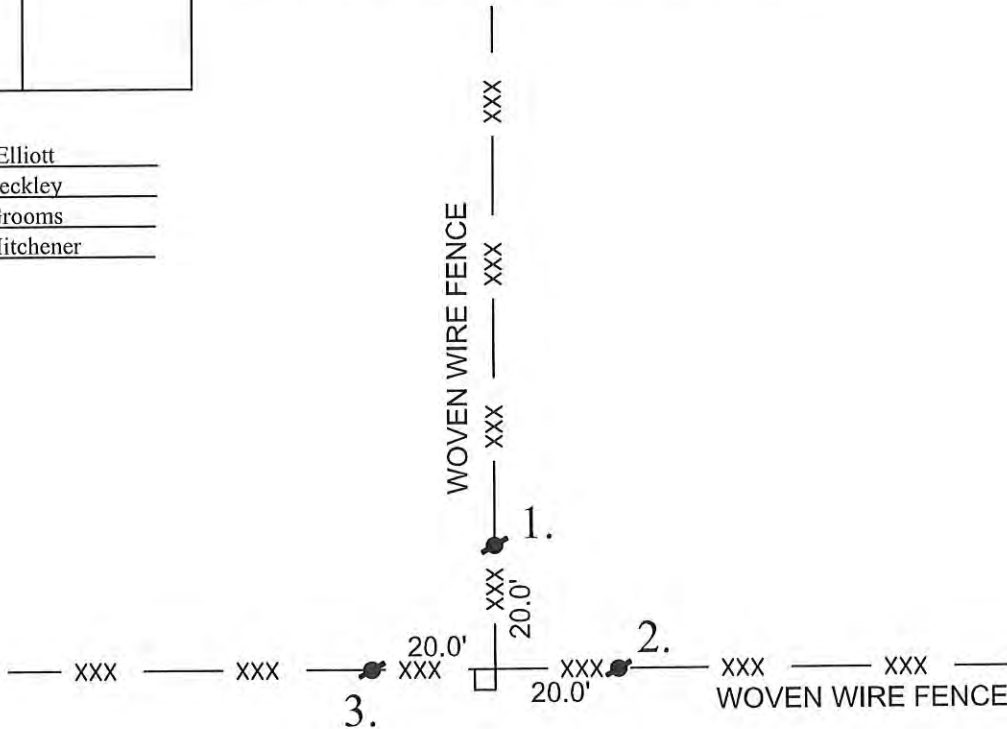
DATE RECOVERED: February 2, 2016

CORNER RECOVERED BY: RANDALL MILLER

**SURVEYOR'S REPORT:**

THE CASS COUNTY RECORDS PROVIDED NO PRIOR EXCAVATION HISTORY FOR THIS CORNER. ON FEBRUARY 2, 2016, A 8 INCH SQUARE CONCRETE CORNER POST WAS FOUND AT THE INTERSECTION OF FENCE LINES SITUATE NORTH, EAST, AND WEST FROM ITS LOCATION. THE AREA AROUND THE POST WAS THOROUGHLY SEARCHED AND PROBED, AND NO STONE OR ANY OTHER EVIDENCE WAS FOUND. 5/8 INCH DIAMETER STEEL REBARS WERE SET FOR THE PURPOSE OF REFERENCING THE CORNER, AS SHOWN.

Witnessed by: Willie Elliott  
Kyle Beckley  
Mike Grooms  
Tino Mitchener



MONUMENT SET: 8 INCH SQUARE CONCRETE CORNER POST FOUND AT THE INT. OF FENCE LINES

- REFERENCES: 1. 5/8 INCH DIAMETER STEEL REBAR SET FLUSH WITH GROUND  
 2. 5/8 INCH DIAMETER STEEL REBAR SET FLUSH WITH GROUND  
 3. 5/8 INCH DIAMETER STEEL REBAR SET FLUSH WITH GROUND

**CERTIFICATION:**

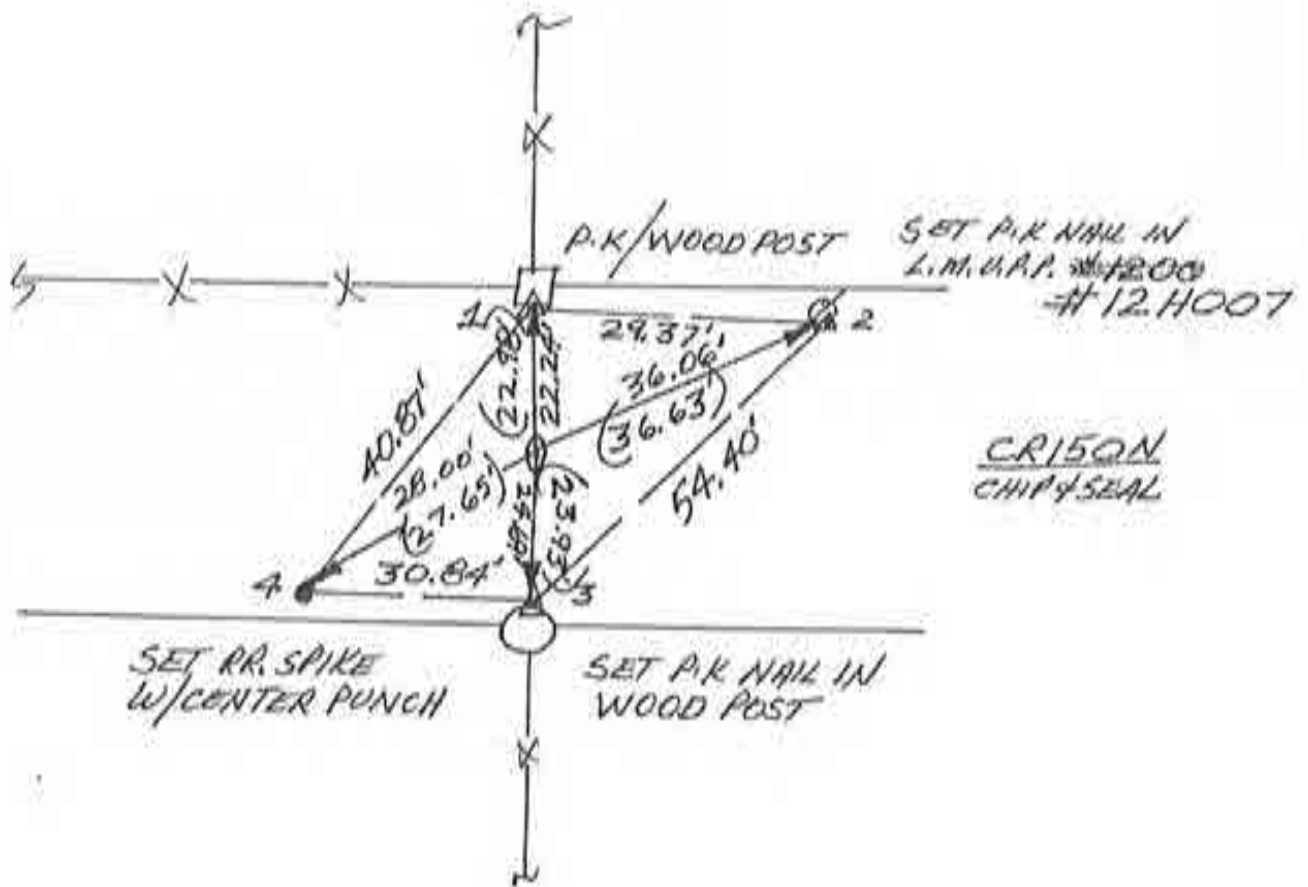
I, THE UNDERSIGNED, RANDALL MILLER, A LAND SURVEYOR REGISTERED IN THE STATE OF INDIANA UNDER I.C. 25-31, DO HEREBY CERTIFY THAT I HAVE RECOVERED THE CORNER HEREON SHOWN AND DESCRIBED.

*Randall Miller*  
 RANDALL D. MILLER  
 R.L.S. #880001



N  
↑  
NO SCALE

1. FRI. 5 APRIL '90 DLA RLS 0537, F. PANICI  $\phi$ .  
FOUND RR SPIKE @ R/W SPIT + FIELD DIVISION.  
CENTER PUNCHED FOUND SPIKE, SET REFS., WILL  
DIB. FOUND SPIKE'S REFS.  $\rightarrow$  1. = 22.24'; 2. = 36.06';  
3. = 24.69'; 4. = 28.00'.
2. SAT 7 APRIL '90 FOUND TOP POINT OF LARGE  
ANGULAR STONE @ 1' BELOW PAVEMENT. NO MARKINGS,  
REF'D. TOP POINT.
3. WEDS 25 APRIL '90 SET RR SPIKE WITH CENTER PUNCH  
AT FOUND SPIKE'S REFS ABOVE. STONE'S REFS IN  
PARENTHESES (X). & FOUND SPIKE REPRESENTS  
UN-REMARKABLE STONE WELL ENOUGH.



WEST 1/4 COR. SEC. 14



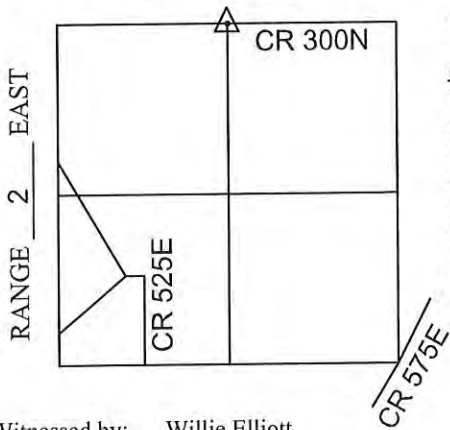


# CORNERSTONE RECORD BOOK

## SITE MAP

SECTION 11

TOWNSHIP 27 NORTH



Witnessed by: Willie Elliott

OFFICE OF THE CASS COUNTY SURVEYOR, LOGANSPORT, INDIANA

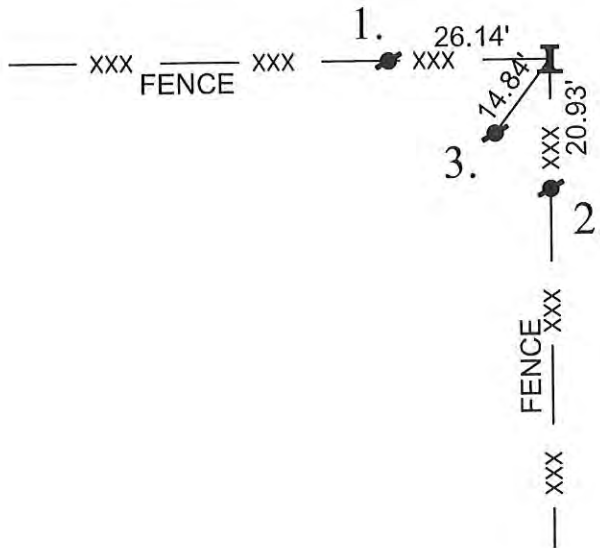
CORNER DESCRIPTION: N 1/4 CORNER OF SECTION 11 TWP-27N, RNG-2E

DATE RECOVERED: February 29, 2016

CORNER RECOVERED BY: RANDALL MILLER

SURVEYOR'S REPORT:

THE CASS COUNTY RECORDS PROVIDED NO PRIOR EXCAVATION HISTORY FOR THIS CORNER. ON FEBRUARY 29, 2016, A RAILROAD IRON POST WAS FOUND AT THE INTERSECTION OF FENCE LINES SITUATE WEST, AND SOUTH FROM ITS LOCATION. THE AREA AROUND THE POST WAS PROBED AND THOROUGHLY SEARCHED AND NO STONE OR ANY OTHER EVIDENCE WAS FOUND. AN ORIGINAL SURVEY COMPLETED BY RMA, INC., DATED AUGUST 13, 2015 (JOB NO. 15-0157) ON A 10.09 ACRE TRACT OF LAND SITUATE IN SOUTHWEST QUARTER OF THE SOUTHWEST QUARTER OF SECTION 11, TOWNSHIP 27 NORTH, RANGE 2 EAST, REFERENCED THE POST AS BEING THE BEST AVAILABLE EVIDENCE FOR THE LOCATION OF THE CORNER, AND MET THE REQUIREMENTS FOR A COMMON REPORT CORNER LOCATION.



MONUMENT SET: RAILROAD IRON POST FOUND AT THE INTERSECTION OF FENCE LINES

REFERENCES: 1. 5/8" Ø STEEL REBAR SET FLUSH WITH GROUND IN FENCE LINE

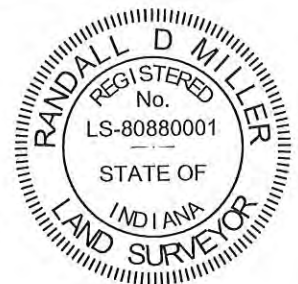
2. 5/8" Ø STEEL REBAR SET FLUSH WITH GROUND IN FENCE LINE

3. 5/8" Ø STEEL REBAR SET FLUSH WITH GROUND

CERTIFICATION:

I, THE UNDERSIGNED, RANDALL MILLER, A LAND SURVEYOR REGISTERED IN THE STATE OF INDIANA UNDER I.C. 25-31, DO HEREBY CERTIFY THAT I HAVE RECOVERED THE CORNER HEREON SHOWN AND DESCRIBED.

*Randall Miller*  
 RANDALL D. MILLER  
 R.L.S. #880001

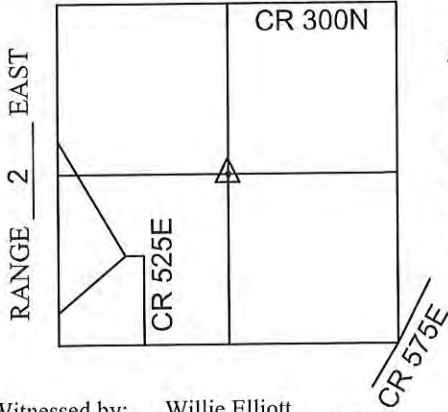


# CORNERSTONE RECORD BOOK

## SITE MAP

SECTION 11

TOWNSHIP 27 NORTH



Witnessed by: Willie Elliott

OFFICE OF THE CASS COUNTY SURVEYOR, LOGANSPORT, INDIANA

CORNER DESCRIPTION: CENTER OF SECTION 11 TWP-27N, RNG-2E

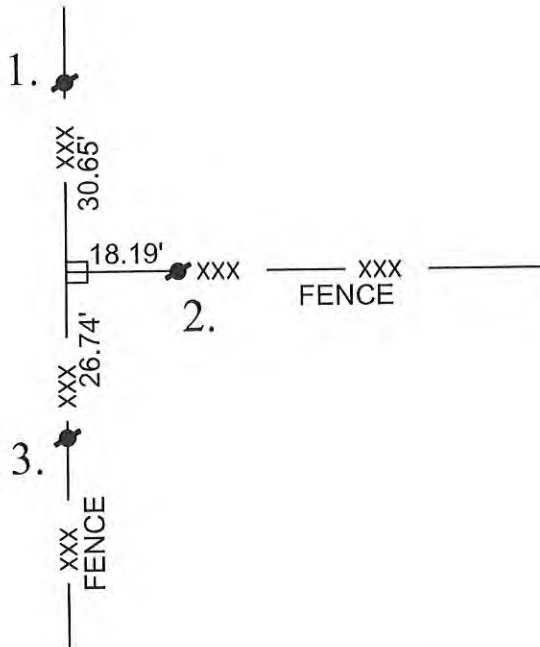
DATE RECOVERED: February 29, 2016

CORNER RECOVERED BY: RANDALL MILLER

SURVEYOR'S REPORT:

THE CASS COUNTY RECORDS PROVIDED NO PRIOR EXCAVATION HISTORY FOR THIS CORNER. ON FEBRUARY 29, 2016, AN 8 INCH SQUARE WOOD CORNER POST WAS FOUND AT THE INTERSECTION OF FENCE LINES SITUATE NORTH, SOUTH, AND EAST FROM ITS LOCATION. THE AREA AROUND THE POST WAS PROBED AND THOROUGHLY SEARCHED AND NO STONE OR ANY OTHER EVIDENCE WAS FOUND. AN ORIGINAL SURVEY COMPLETED BY RMA, INC., DATED AUGUST 13, 2015 (JOB NO. 15-0157) ON A 10.09 ACRE TRACT OF LAND SITUATE IN SOUTHWEST QUARTER OF THE SOUTHWEST QUARTER OF SECTION 11, TOWNSHIP 27 NORTH, RANGE 2 EAST, REFERENCED THE POST AS BEING THE BEST AVAILABLE EVIDENCE FOR THE LOCATION OF THE CORNER, AND MET THE REQUIREMENTS FOR A COMMON REPORT CORNER LOCATION.

WOODED



MONUMENT SET: 8" SQUARE WOOD CORNER POST FOUND AT THE INTERSECTION OF FENCE LINES

REFERENCES: 1. 5/8" Ø STEEL REBAR SET FLUSH WITH GROUND IN FENCE LINE

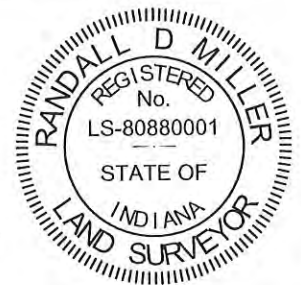
2. 5/8" Ø STEEL REBAR SET FLUSH WITH GROUND IN FENCE LINE

3. 5/8" Ø STEEL REBAR SET FLUSH WITH GROUND IN FENCE LINE

CERTIFICATION:

I, THE UNDERSIGNED, RANDALL MILLER, A LAND SURVEYOR REGISTERED IN THE STATE OF INDIANA UNDER I.C. 25-31, DO HEREBY CERTIFY THAT I HAVE RECOVERED THE CORNER HEREON SHOWN AND DESCRIBED.

*Randall Miller*  
 RANDALL D. MILLER  
 R.L.S. #880001

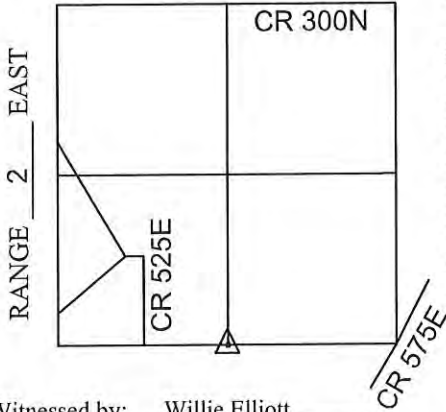


# CORNERSTONE RECORD BOOK

## SITE MAP

SECTION 11

TOWNSHIP 27 NORTH



Witnessed by: Willie Elliott

OFFICE OF THE CASS COUNTY SURVEYOR, LOGANSPORT, INDIANA

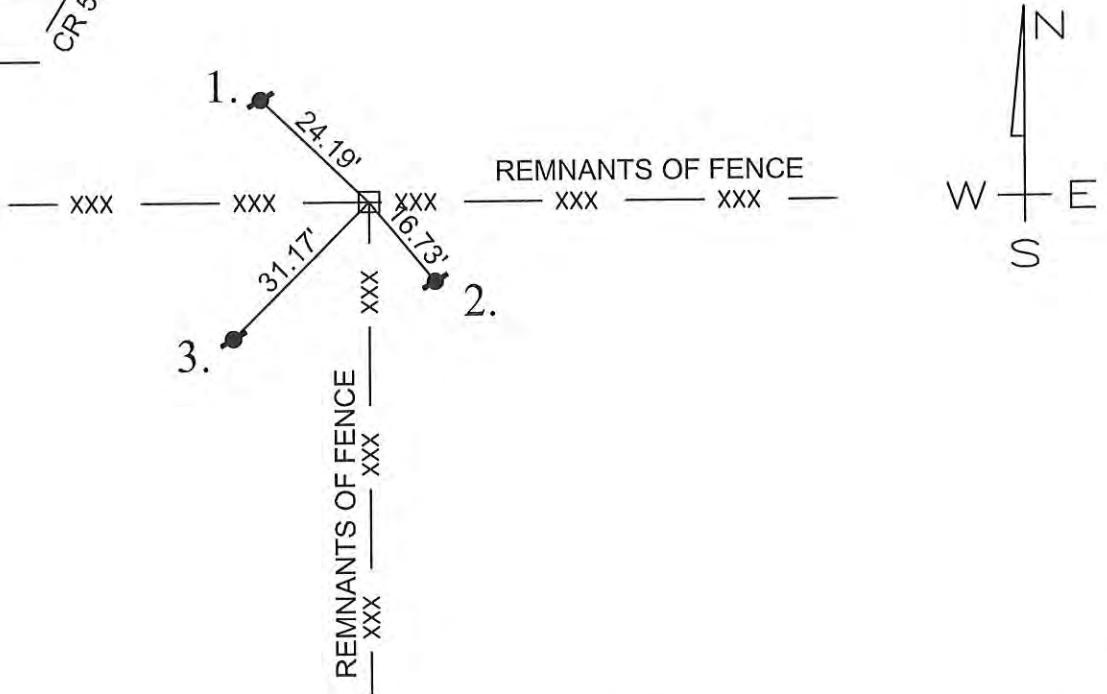
CORNER DESCRIPTION: SOUTH 1/4 CORNER OF SEC. 11 TWP-27N, RNG-2E

DATE RECOVERED: February 29, 2016

CORNER RECOVERED BY: RANDALL MILLER

SURVEYOR'S REPORT:

THE CASS COUNTY RECORDS PROVIDED NO PRIOR EXCAVATION HISTORY FOR THIS CORNER. ON FEBRUARY 29, 2016, THE BASE OF AN OLD WOODEN CORNER POST WAS FOUND AT THE INTERSECTION OF REMNANT FENCE LINES SITUATE EAST, WEST, AND SOUTH FROM ITS LOCATION. THE AREA SURROUNDING THE POST WAS THOROUGHLY SEARCHED AND PROBED AND NO STONE OR ANY OTHER EVIDENCE WAS FOUND. AN ORIGINAL SURVEY COMPLETED BY RMA, INC., DATED AUGUST 13, 2015 (JOB NO. 15-0157) ON A 10.09 ACRE TRACT OF LAND SITUATE IN SOUTHWEST QUARTER OF THE SOUTHWEST QUARTER OF SECTION 11, TOWNSHIP 27 NORTH, RANGE 2 EAST, REFERENCED THE POST AS BEING THE BEST AVAILABLE EVIDENCE FOR THE LOCATION OF THE CORNER, AND MET THE REQUIREMENTS FOR A COMMON REPORT CORNER LOCATION.



MONUMENT SET: 5/8" Ø STEEL REBAR SET IN BASE OF 8"X8" OLD WOOD POST BASE

REFERENCES: 1. 5/8" Ø STEEL REBAR SET FLUSH WITH GROUND

2. 5/8" Ø STEEL REBAR SET FLUSH WITH GROUND

3. 5/8" Ø STEEL REBAR SET FLUSH WITH GROUND

CERTIFICATION:

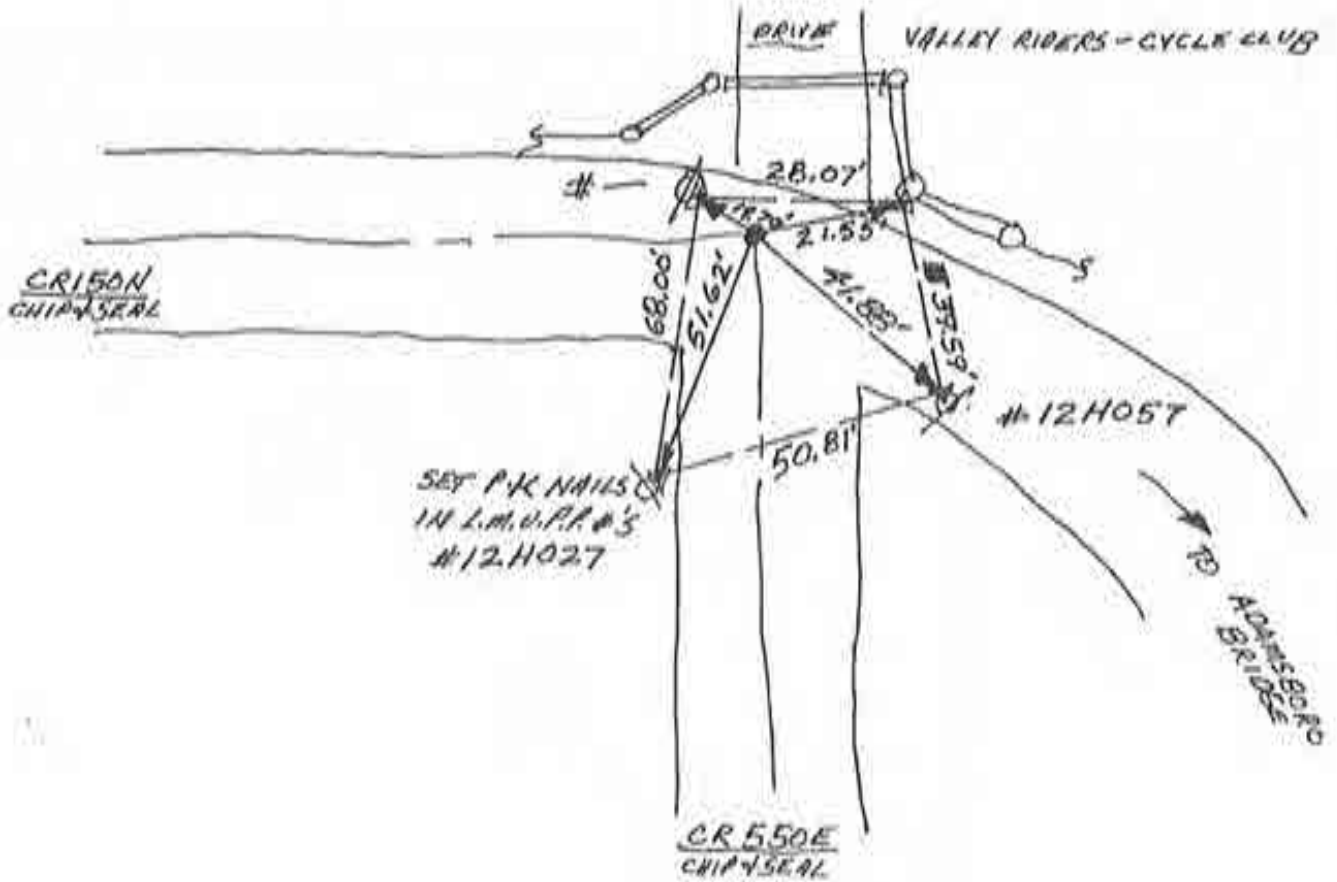
I, THE UNDERSIGNED, RANDALL MILLER, A LAND SURVEYOR REGISTERED IN THE STATE OF INDIANA UNDER I.C. 25-31, DO HEREBY CERTIFY THAT I HAVE RECOVERED THE CORNER HEREON SHOWN AND DESCRIBED.

*Randall Miller*  
 RANDALL D. MILLER  
 R.L.S. #880001



N  
NO SCALE

1. FRI. 5 APRIL 190 DLA RLS 0537 F. PANICI P.  
FOUND RR. SPIKE @ ROADS' E-S' INTERSECTION



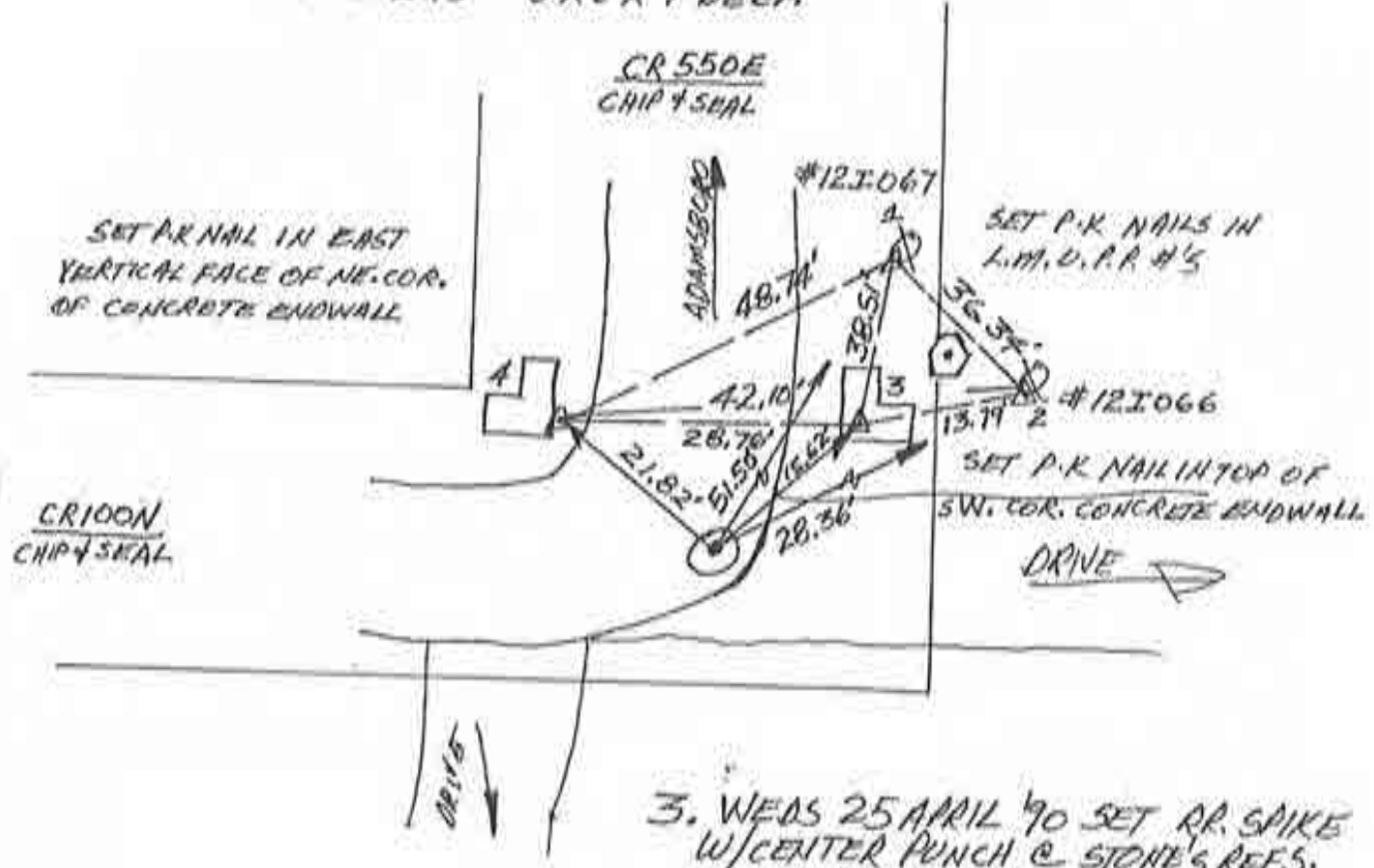
CENTER SEC. 14



N  
SCALE

1. FRI. 5 APRIL '90 OLA RLS 0537, F. PANICI  $\phi$ .  
 FOUND RR SPIKE @ R/W SPLITS + FIELD DIVISIONS;  
 CENTER PUNCHED SPIKE, SET REFS.; WILL DIG.  
 FOUND SPIKE'S REFS  $\# 1 = 50.61'$ ;  $\# 2 = 25.87'$ ;  
 $\# 3 = 13.65'$ ;  $\# 4 = 24.14'$ .

2. SAT 7 APRIL FOUND 2 SMALL FOOTBALL SIZED  
 WITNESS STONES OVER 2.5' LONG X 1.5' THICK  
 CONICAL STONE W/NO MARKINGS; POINT IS 2' BELOW  
 PAVEMENT - REF'D POINTS WITNESSED STONES NOT  
 REPLACED IN LIEU OF METAL STAKE + REFS.  
 HOLE WAS  $\approx 8' \times 6' \times 4'$  DEEP.



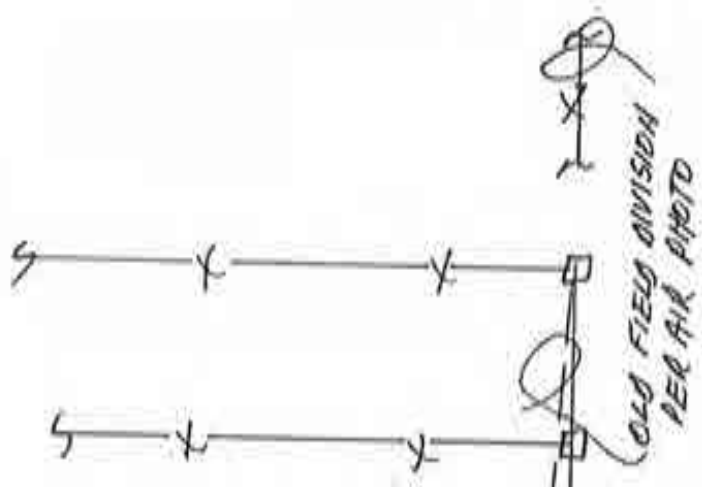
3. WEDS 25 APRIL '90 SET RR SPIKE  
 W/CENTER PUNCH @ STONE'S REFS.

SOUTH 1/4 COR. SEC. 14



N  
 ↑  
 1/2" SCALE

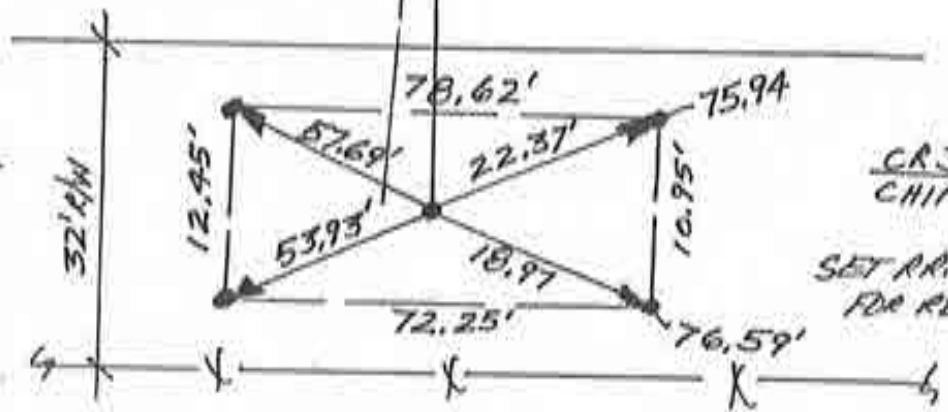
1. FRI. 5 APRIL '90 DIA RLS 0537 F. PANICI Ø; NO METAL SOUNDING FOUND; SET REFS, WILL DIG.
2. SAT 7 APRIL '90 FOUND NO METAL, NO POST, NO PIT, NO MONUMENT @ R/W SPLIT WHERE FARTHEST NORTH POST ALIGNS WITH TREES; DUB 8' X 3.5' X 3' DEEP — DUB SECOND HOLE EAST OF FIRST WHERE BOTH NORTH POSTS ALIGN; DUB 16' X 3' X 4' DEEP HOLE; NO MONUMENT FOUND.
3. 25 APRIL '90 WEDS. SET RR. SPIKE W/CENTER PUNCH @ R/W SPLIT + BEST ESTIMATE OF FIELD DIVISION.



**WARNING**

THIS POSITION IS SUSPECT, USE WITH CAUTION. THIS LOCATION NEEDS SECTION ANALYSIS.

16' BETWEEN EDGES OF DUBS



CR 300N  
 CHIP & SEAL

SET RR. SPIKES W/C.A. FOR REFS.

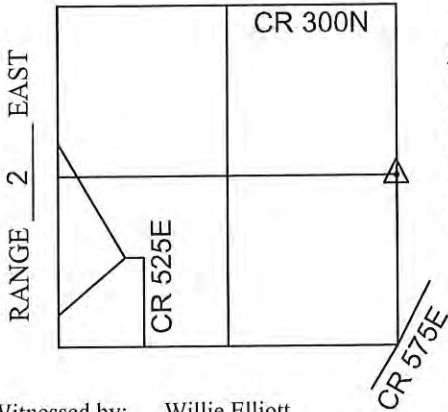
SE. COR. SEC. 2.

# CORNERSTONE RECORD BOOK

## SITE MAP

SECTION 11

TOWNSHIP 27 NORTH



Witnessed by: Willie Elliott

OFFICE OF THE CASS COUNTY SURVEYOR, LOGANSPORT, INDIANA

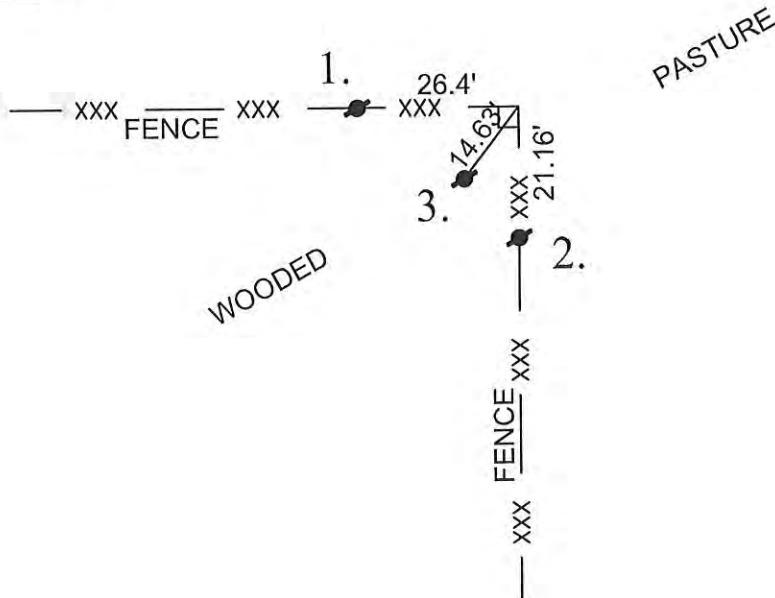
CORNER DESCRIPTION: EAST 1/4 CORNER OF SEC. 11 TWP-27N, RNG-2E

DATE RECOVERED: February 29, 2016

CORNER RECOVERED BY: RANDALL MILLER

**SURVEYOR'S REPORT:**

THE CASS COUNTY RECORDS PROVIDED NO PRIOR EXCAVATION HISTORY FOR THIS CORNER. ON FEBRUARY 29, 2016, AN 8 INCH SQUARE WOOD CORNER POST WAS FOUND AT THE INTERSECTION OF FENCE LINES SITUATE WEST AND SOUTH FROM ITS LOCATION. THE AREA AROUND THE POST WAS PROBED AND THOROUGHLY SEARCHED AND NO STONE OR ANY OTHER EVIDENCE WAS FOUND. AN ORIGINAL SURVEY COMPLETED BY RMA, INC., DATED AUGUST 13, 2015 (JOB NO. 15-0157) ON A 10.09 ACRE TRACT OF LAND SITUATE IN SOUTHWEST QUARTER OF THE SOUTHWEST QUARTER OF SECTION 11, TOWNSHIP 27 NORTH, RANGE 2 EAST, REFERENCED THE POST AS BEING THE BEST AVAILABLE EVIDENCE FOR THE LOCATION OF THE CORNER, AND MET THE REQUIREMENTS FOR A COMMON REPORT CORNER LOCATION.



MONUMENT SET: 8" SQUARE WOOD CORNER POST FOUND AT THE INTERSECTION OF FENCE LINES

REFERENCES: 1. 5/8" Ø STEEL REBAR SET FLUSH WITH GROUND IN FENCE LINE

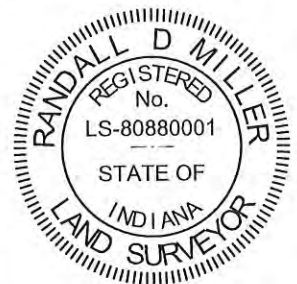
2. 5/8" Ø STEEL REBAR SET FLUSH WITH GROUND IN FENCE LINE

3. 5/8" Ø STEEL REBAR SET FLUSH WITH GROUND

**CERTIFICATION:**

I, THE UNDERSIGNED, RANDALL MILLER, A LAND SURVEYOR REGISTERED IN THE STATE OF INDIANA UNDER I.C. 25-31, DO HEREBY CERTIFY THAT I HAVE RECOVERED THE CORNER HEREON SHOWN AND DESCRIBED.

*Randall Miller*  
 RANDALL D. MILLER  
 R.L.S. #880001

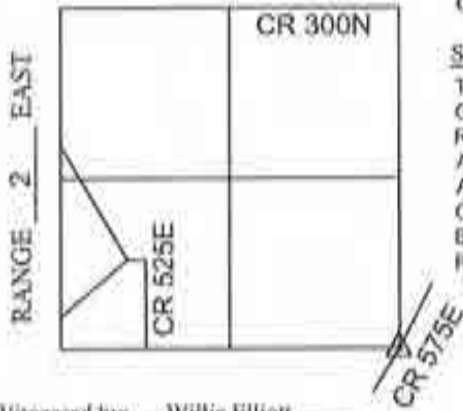


# CORNERSTONE RECORD BOOK

## SITE MAP

SECTION 11

TOWNSHIP 27 NORTH



Witnessed by: Willie Elliott

OFFICE OF THE CASS COUNTY SURVEYOR, LOGANSPORT, INDIANA

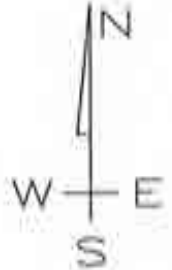
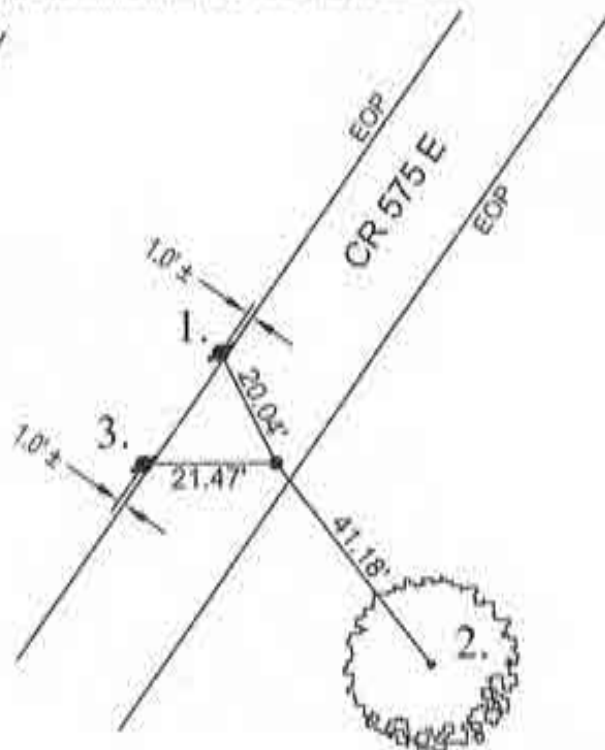
CORNER DESCRIPTION: SE CORNER OF SEC. 11 TWP-27N, RNG-2E

DATE RECOVERED: February 29, 2016

CORNER RECOVERED BY: RANDALL MILLER

### SURVEYOR'S REPORT:

THE CASS COUNTY RECORDS PROVIDED NO PRIOR EXCAVATION HISTORY FOR THIS CORNER. ON FEBRUARY 29, 2016, A PK NAIL WAS FOUND FLUSH WITH THE ASPHALT SURFACE IN COUNTY ROAD 575 EAST. THERE WERE NO OTHER MONUMENTS OR EVIDENCE FOUND IN THE VICINITY. AN ORIGINAL SURVEY COMPLETED BY RMA, INC., DATED AUGUST 13, 2015 (JOB NO. 15-0157) ON A 10.00 ACRE TRACT OF LAND SITUATE IN SOUTHWEST QUARTER OF THE SOUTHWEST QUARTER OF SECTION 11, TOWNSHIP 27 NORTH, RANGE 2 EAST, REFERENCED THE NAIL AS BEING THE BEST AVAILABLE EVIDENCE FOR THE LOCATION OF THE CORNER, AND MET THE REQUIREMENTS FOR A COMMON REPORT CORNER LOCATION.



MONUMENT SET: PK NAIL FOUND ON THE SURFACE OF THE ASPHALT

REFERENCES: 1. 5/8 INCH DIAMETER STEEL REBAR SET FLUSH WITH GROUND 1' WEST OF ASPHALT EDGE

2. MAG NAIL SET IN NW FACE OF 18" TREE

3. 5/8 INCH DIAMETER STEEL REBAR SET FLUSH WITH GROUND 1' WEST OF ASPHALT EDGE

### CERTIFICATION:

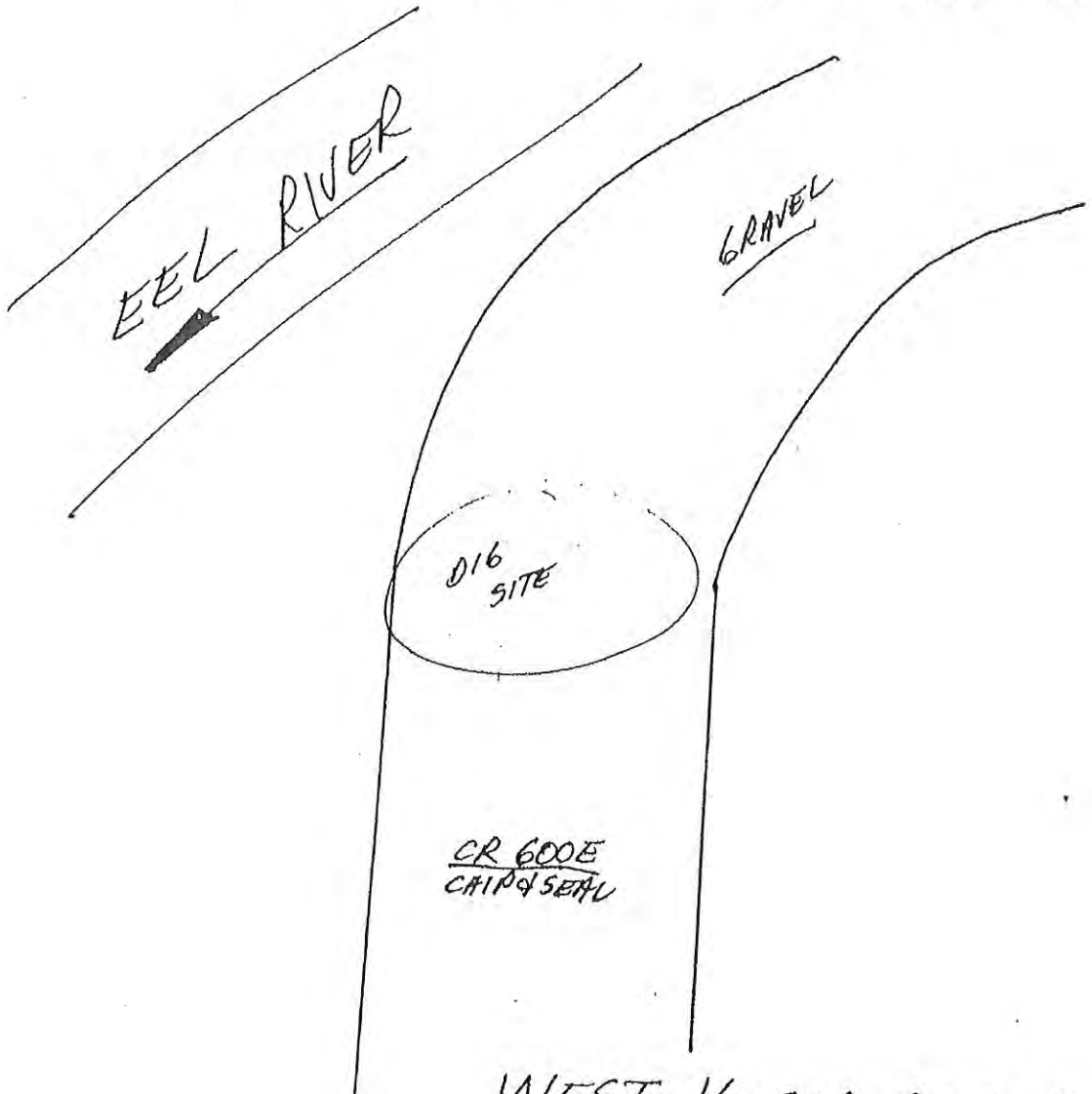
I, THE UNDERSIGNED, RANDALL MILLER, A LAND SURVEYOR REGISTERED IN THE STATE OF INDIANA UNDER I.C. 25-31, DO HEREBY CERTIFY THAT I HAVE RECOVERED THE CORNER HEREON SHOWN AND DESCRIBED.

*Randall Miller*  
RANDALL D. MILLER  
R.L.S. #880001



N  
↑  
NO SCALE

1. SAT 22 SEPT '90 OLA RLS 0537  $\phi$  F. ANNICI  $\phi$ .  
DUG 6'x3'x4 DEEP HOLE @ E R/W SPLIT + WHEELED  
2,640' NORTH OF SW. COR. SEC. 13. FOUND NO POST,  
NO PIT NO STONE. ON TWO PRIOR VISITS FOUND  
NO METAL, NOR ANY FIELD DIVISION. SMALL ADJACENT  
PARCELS,  $\frac{1}{4}$  RIVER ADD TO CONFUSION.
2. MON 2 OCT '90 W/ P. MAIER  $\phi$ . AFTER CONSIDERATION,  
HAVE DEFERRED SETTING POSITION TO PRIVATE SURVEYS  
OF THE FUTURE. POSITION BEYOND SCOPE OF PROJECT.



WEST  $\frac{1}{4}$  COR. SEC. 13  
(T27N-R2E)

~~AA-7~~