

The background of the slide features a large, faint, circular seal of the State of Indiana. The seal contains the text "THE STATE OF INDIANA" at the top and "1816" at the bottom. In the center of the seal is a figure holding a bow and arrow, with a star above its head.

# Indiana Pre-Admissions

**Your Path to College**

Michelle Ashcraft, Associate Commissioner for K-12 Strategy

Greg Harrell, Director of Legislation and Program Implementation

Indiana Commission for Higher Education

Cohort: Class of 2024 Indiana High School Graduates

# AGENDA

- ▶ What is *Indiana Pre-Admissions: Your Path to College*?
- ▶ Key Points and Terminology
- ▶ Why is the Commission implementing a pre-admissions initiative?
- ▶ How will the Commission implement the pre-admissions initiative?
- ▶ What is the timeline for implementation?
- ▶ How can Indiana high schools participate in the pre-admissions initiative?
- ▶ What changes may occur for the class of 2025?



# WHAT IS INDIANA PRE-ADMISSIONS?

*Indiana Pre-Admissions: Your Path to College* is a **statewide pre-admissions initiative** of the Indiana Commission for Higher Education, in partnership with Indiana's higher education institutions, which **kicks off with the high school senior class of 2024**.

This important initiative is a **tool to promote the value of higher education** by informing Hoosier high school seniors about their **choices for postsecondary education and training in Indiana** and the various **resources** to help them **afford these options**.



# KEY POINTS & TERMINOLOGY

- ▶ Use the term ***pre-admissions*** not *direct admissions*.
  - ▶ This avoids confusion with existing campus direct admissions programs.
  - ▶ The *pre* in *pre-admissions* implies that there are next steps.
- ▶ Participating institutions have agreed to honor pre-admissions decisions, assuming students maintain eligibility criteria, meet any additional caveats (as applicable), and take the next steps to apply and enroll.
- ▶ The Commission defines *college* broadly. We want students and families to know about all their options.





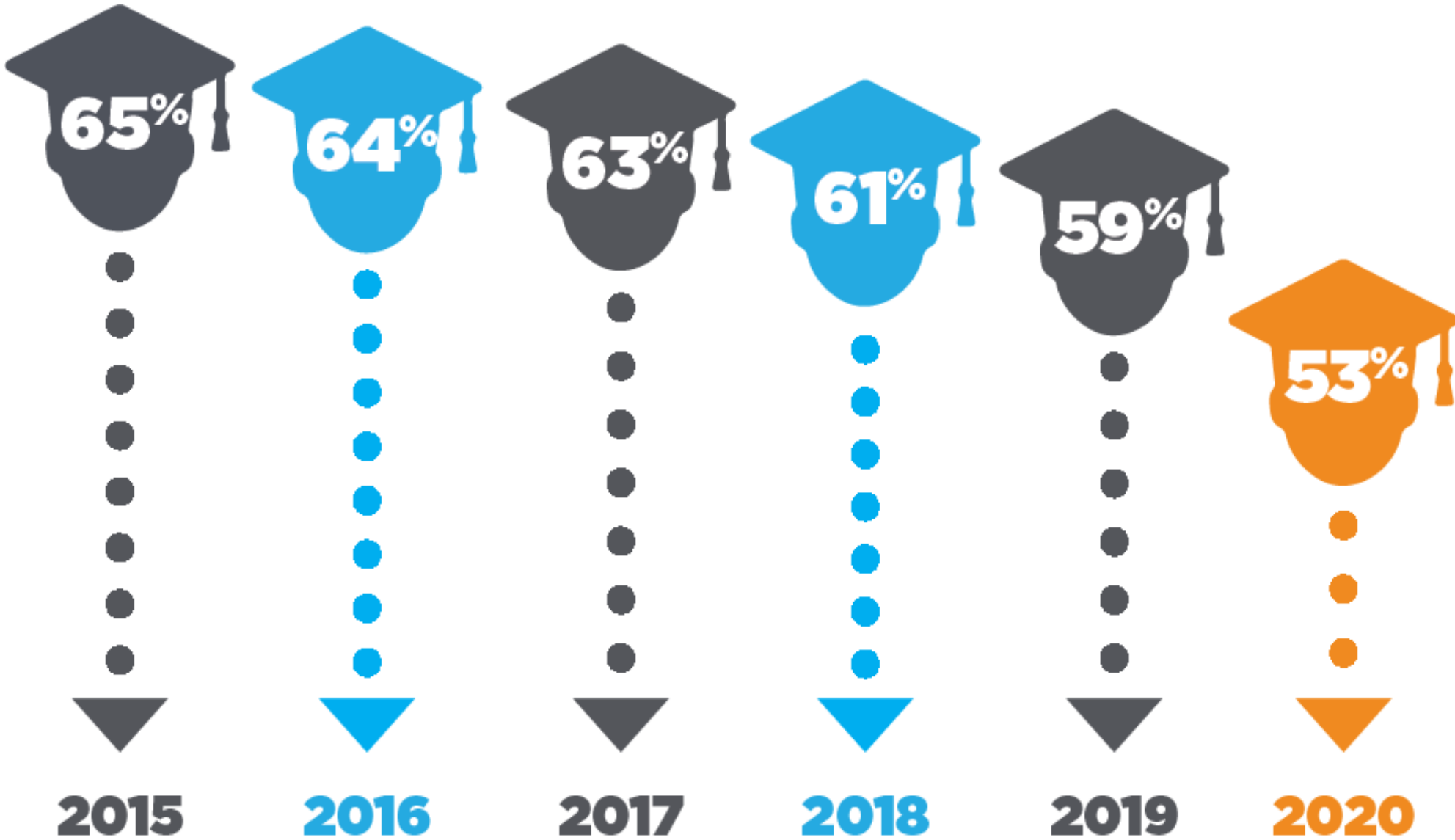
# NEARLY 80% OF INSTITUTIONS OPT IN FOR CLASS OF 2024

- ▶ Anderson University
- ▶ Ball State University
- ▶ Bethel University
- ▶ Calumet College of St. Joseph
- ▶ Franklin College
- ▶ Goshen College
- ▶ Grace College
- ▶ Hanover College
- ▶ Holy Cross College
- ▶ Huntington University
- ▶ Indiana State University
- ▶ Indiana Tech
- ▶ Indiana University – Columbus
- ▶ Indiana University – East
- ▶ Indiana University – Fort Wayne
- ▶ Indiana University – Kokomo
- ▶ Indiana University – Northwest
- ▶ Indiana University – South Bend
- ▶ Indiana University – Southeast
- ▶ Indiana University Purdue University Indianapolis
- ▶ Indiana Wesleyan University
- ▶ Ivy Tech Community College
- ▶ Manchester University
- ▶ Marian University – Ancilla
- ▶ Marian University – Indianapolis
- ▶ Marian University – St. Joseph College
- ▶ Martin University
- ▶ Oakland City University
- ▶ Purdue University – Fort Wayne
- ▶ Purdue University – Northwest
- ▶ Saint Mary-of-the-Woods College
- ▶ Trine University
- ▶ University of Evansville
- ▶ University of Indianapolis
- ▶ University of Saint Francis
- ▶ University of Southern Indiana
- ▶ Valparaiso University
- ▶ Vincennes University

# COLLEGE-GOING AND GRADUATE RETENTION

## High Schoolers Going Straight to College

The rate of high school students enrolling in college continues to drop.



## Indiana Graduate Retention

 **14<sup>th</sup>**  
 in attracting  
 people to come  
 to Indiana for college

**40<sup>th</sup>**  
 in  
 retaining  
 college graduates 

# WHY IMPLEMENT A PRE-ADMISSIONS INITIATIVE?

- ▶ **Idaho** and **Minnesota** have seen increases in their college-going rates as a result of their models.
- ▶ The **Indiana Commission for Higher Education** can partner with postsecondary institutions to implement a statewide approach and prevent individual institutions from having to pay third-party providers to implement institutional approaches.
- ▶ The program helps address two of the major concerns about college: (1) students and families not knowing all their **choices** for postsecondary education, and (2) concerns about **affordability**.
- ▶ *Indiana Pre-Admissions: Your Path to College* will create a better **marketplace** for students so they can see their **opportunities right here in Indiana**.
- ▶ The program will encourage **early applications** and **FAFSA filing** allowing students to maximize their choices and financial aid opportunities.



# HOW WILL PRE-ADMISSIONS BE IMPLEMENTED?

- ▶ Participating institutions will identify **GPA and/or SAT cut scores** by **May 26**.
- ▶ High schools will **indicate participation via a survey form** by **May 26**.
- ▶ Participating high schools will **upload partial Graduation Details** (preliminary GPAs) for students in the class of 2024 to ScholarTrack by **June 15**.
  - ▶ All high schools already must upload preliminary GPAs and diploma types for 21<sup>st</sup> Century Scholars.
- ▶ The Commission will receive an **SAT file** to upload to ScholarTrack from IDOE.
- ▶ The Commission will **use ScholarTrack to match rising seniors** (class of 2024) **to institutions** based on cut score criteria in late summer 2023.



# HOW WILL PRE-ADMISSIONS BE IMPLEMENTED?

- ▶ Rising seniors (class of 2024) will receive a **letter in August** which explains the pre-admissions initiative and details that the official pre-admissions letter will arrive in September.
- ▶ Students will receive their **pre-admissions letter** following Labor Day in September. Parents/guardians will receive a copy of the letter.
- ▶ The front side of the letter will indicate to which institutions the student has been pre-admitted.
- ▶ The back side of the letter will communicate about FAFSA and state financial aid.
- ▶ The letter will direct students to a **landing page** on the Learn More Indiana website to (a) apply to institutions via the Common App or institutional websites and (b) prepare to file the 2024-25 FAFSA.

# HOW WILL PRE-ADMISSIONS BE IMPLEMENTED?

- ▶ Following distribution of the letters ...
  - ▶ **Institutions** will receive a list of pre-admitted students.
  - ▶ **School Users** and **School Admins** in ScholarTrack will receive a list of students with all pre-admissions decisions to empower school staff to help students/families make decisions about their options.
  - ▶ The **Commission's Outreach Coordinators** will also receive a list of students with all pre-admissions decisions to further support school staff, students, and families.
- ▶ The Commission will promote early application through **College Application Week** and priority deadlines.
- ▶ The Commission will promote **early FAFSA filing** in partnership with INvestED and other partners, and help schools implement **the FAFSA requirement**, a result of recently passed legislation.

“THIS IS MAJOR ...”



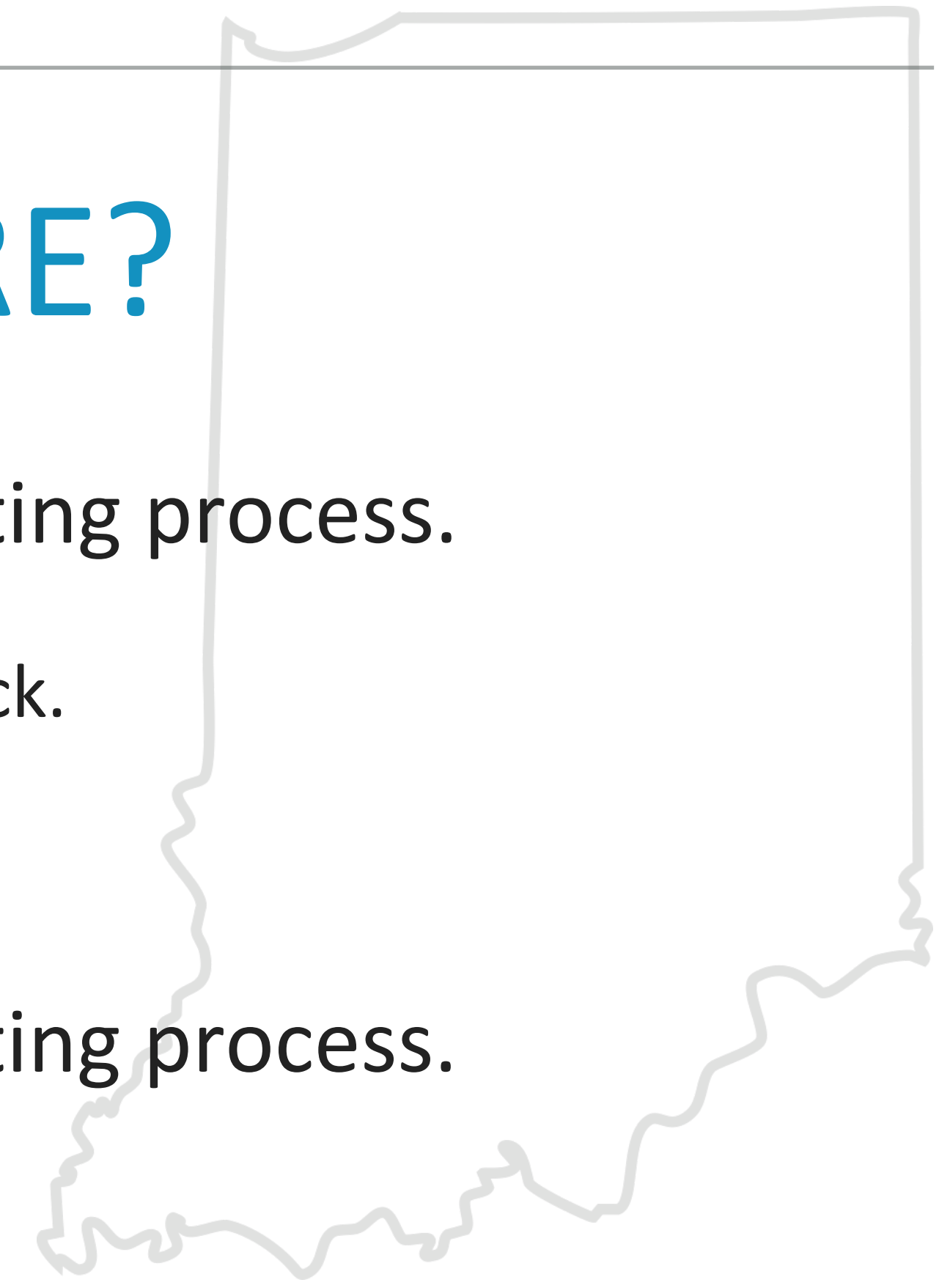
# WHY IMPLEMENT A PRE-ADMISSIONS INITIATIVE?

- ▶ **Indiana** is unique.
- ▶ We can guarantee that **every senior** at every participating high school **will get a letter**.
- ▶ We can guarantee that **every senior** at every participating high school **will get a letter that has more than one institution**, as we have several participating institutions with open admissions.
- ▶ The **landing page** will **streamline** the process for students, families, school partners, and community organizations to find **college application links** and **information about the FAFSA**.



# WILL CHANGES OCCUR IN THE FUTURE?


- ▶ Our goal is to have **GPA information** through a centralized reporting process.
  - ▶ This would prevent high schools from having to upload GPAs to ScholarTrack.
  - ▶ This would allow us to pre-admit all seniors from all high schools.
- ▶ Our goal is to have **e-mail addresses** through a centralized reporting process.
  - ▶ This would allow us to e-mail pre-admission letters in August.
  - ▶ We anticipate we would still follow up with mailed letters in September.
- ▶ We anticipate communications beginning in 9<sup>th</sup> grade to help students and families prepare for pre-admission letter delivery senior year.



# DREAMS FOR THE FUTURE

- ▶ state membership with Common App
- ▶ supporting alternate admission cycles through pre-admissions (spring and summer)
- ▶ using pre-admissions to enroll cohorts affected by COVID-19
- ▶ using pre-admissions to enroll cohorts one year post HS graduation (especially Scholars)
- ▶ supporting transfer through pre-admissions
- ▶ supporting re-enroll campaigns through pre-admissions



The background of the slide features a large, faint, circular seal of the State of Indiana. The seal contains the text "THE STATE OF INDIANA" at the top and "1816" at the bottom. In the center of the seal is a landscape with a rising sun, a plow, and a sheaf of wheat, with a figure standing in the foreground.

**MICHELLE ASHCRAFT, ASSOCIATE COMMISSIONER FOR K-12 STRATEGY**  
**GREG HARRELL, DIRECTOR OF LEGISLATION & PROGRAM IMPLEMENTATION**  
**MCKALAIH MITCHELL, DIRECTOR OF K-12 PROGRAM IMPLEMENTATION**  
**HILARY DEARDORFF, DIRECTOR OF K-12 OUTREACH**  
**ASHLEY UTNAGE, GOVERNOR'S SUMMER INTERN – COLLEGE ENROLLMENT**

Indiana Commission for Higher Education

[PreAdmissions@che.in.gov](mailto:PreAdmissions@che.in.gov)



**INDIANA COMMISSION *for***  
**HIGHER EDUCATION**